



UNITED NATIONS

Geospatial Information Section

Office for Information and Communications Technology

Geospatial & partnerships for the goals



How to measure and monitor the sustainable development goals without geography, place, and location ?

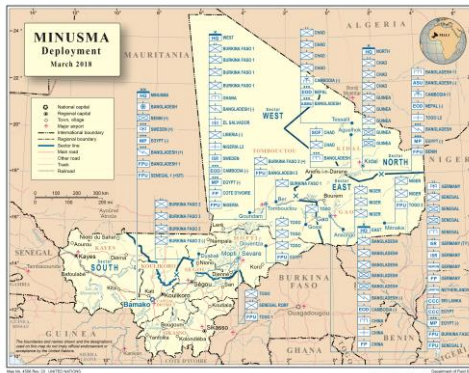
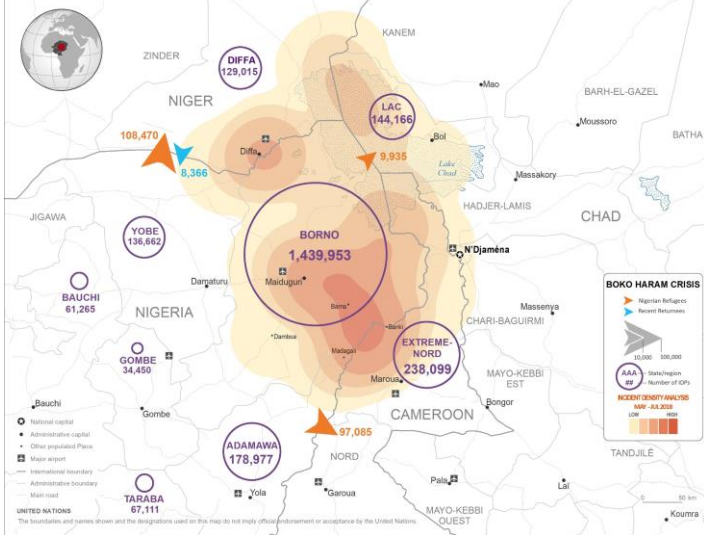
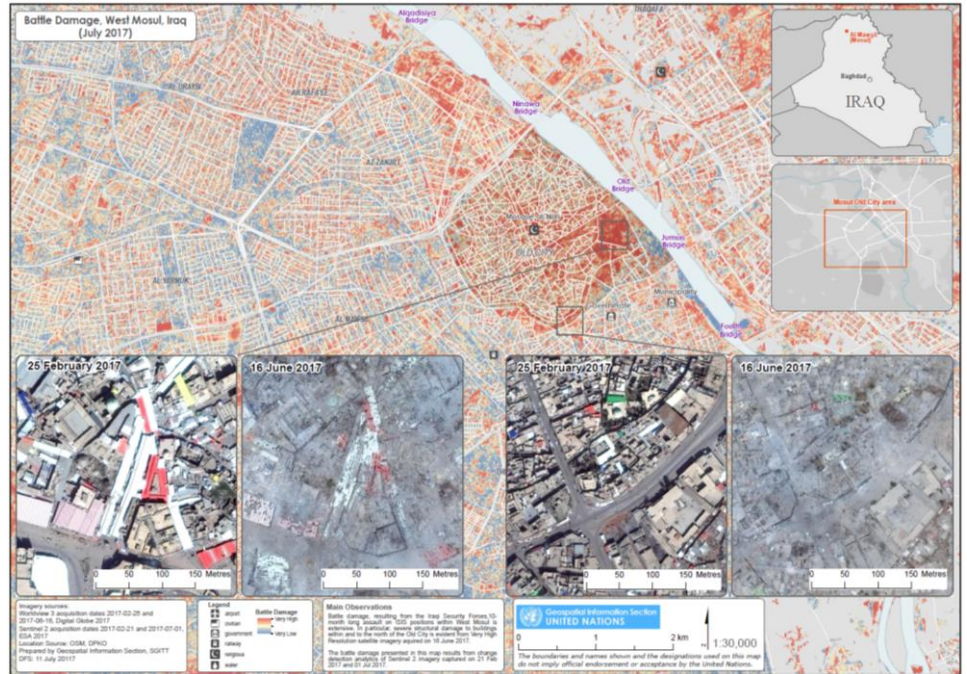


16 PEACE, JUSTICE
AND STRONG
INSTITUTIONS





Providing geospatial information, imagery analysis and cartographic products to the **United Nations operations** and to the **Security Council and its Sanction Committees**

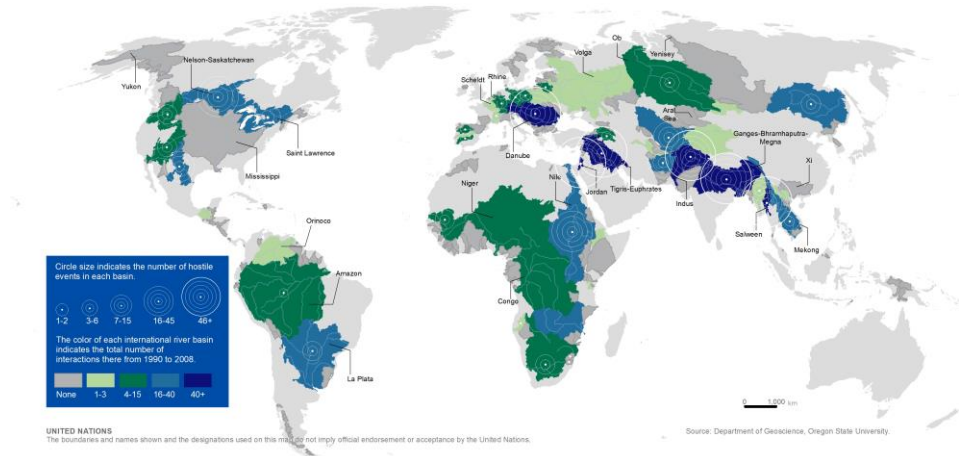
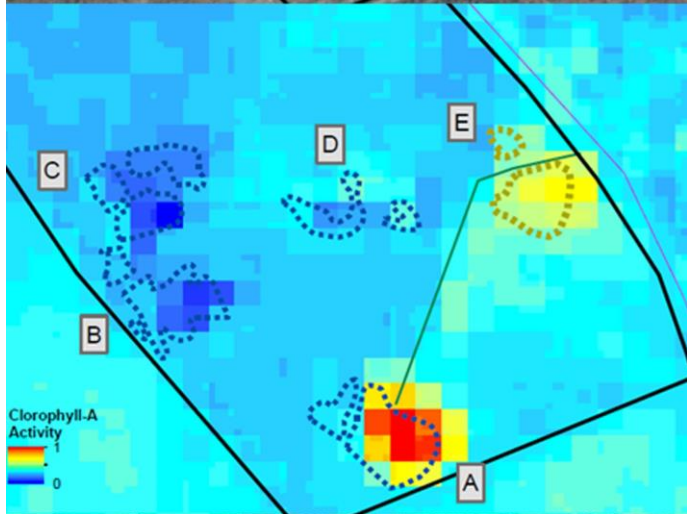
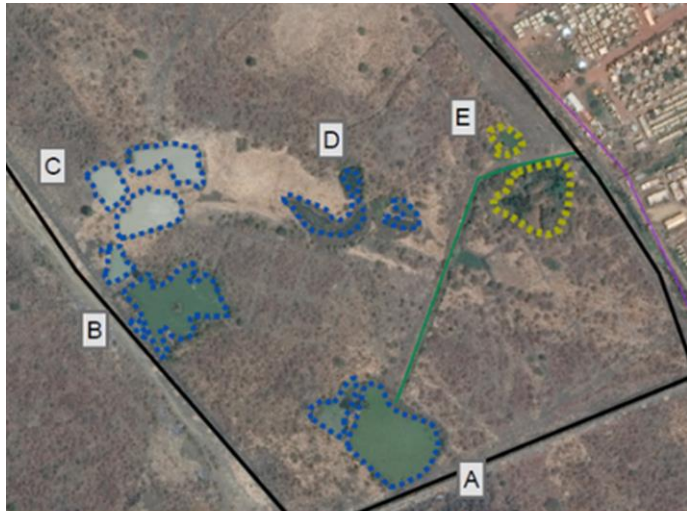


6 CLEAN WATER AND SANITATION





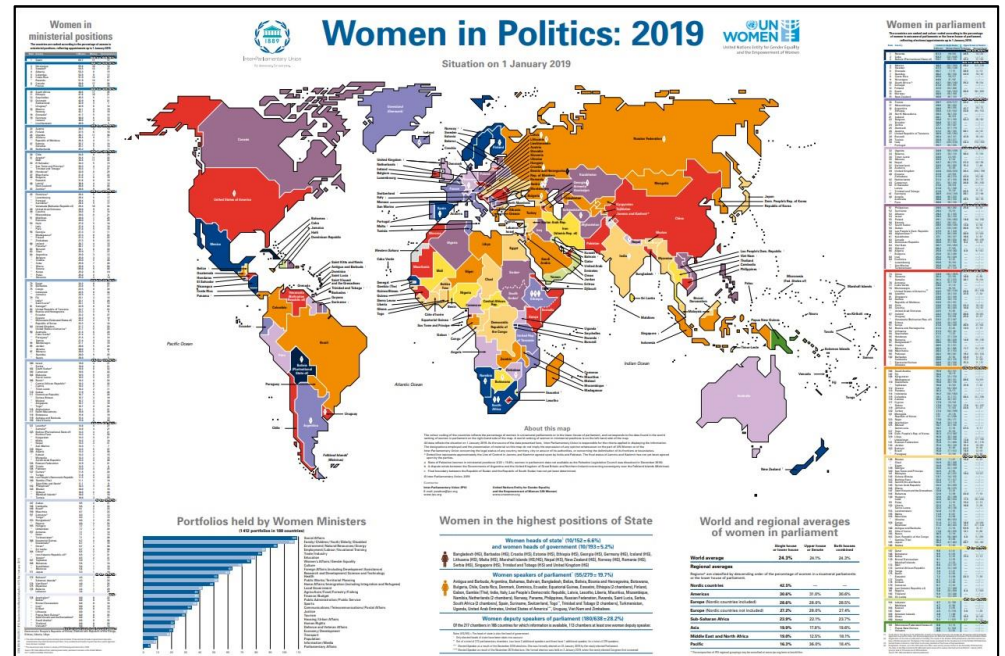
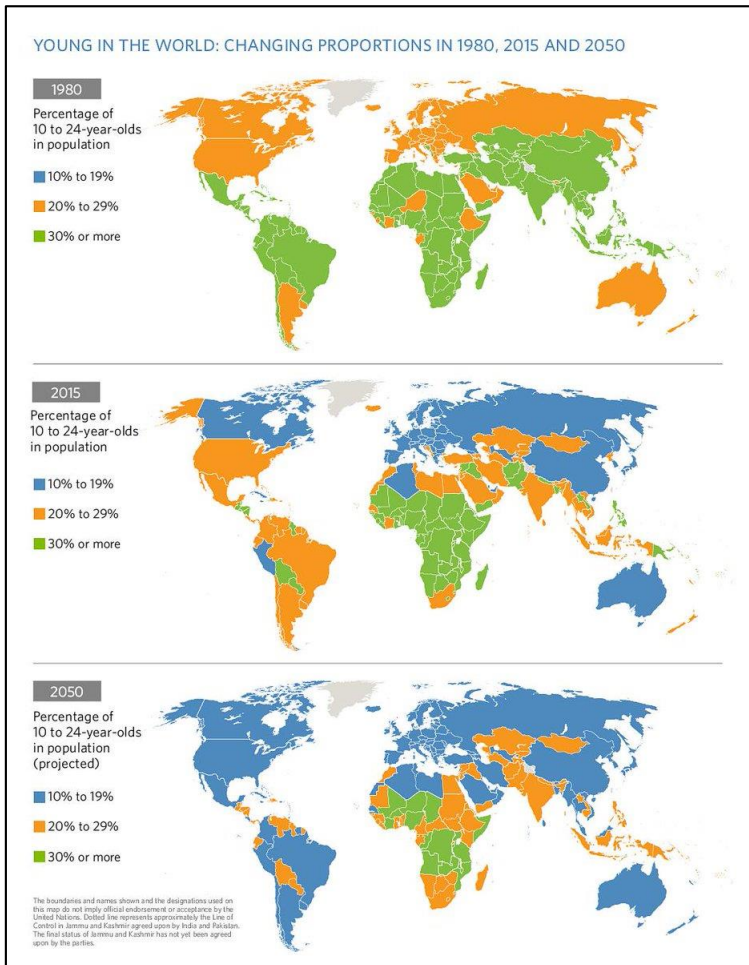
Support the engineering operations of the organization to access water for **communities and operations** with geospatial technology (SAR) and GPR







Providing geospatial data and advice on cartography for mapping the world to **80 branches of the United Nations system** on behalf of the UN Publication Board



17 PARTNERSHIPS
FOR THE GOALS



MAPPING FOR A SUSTAINABLE WORLD





Raise awareness on the use and practice of geospatial information and cartography to map the sustainable development goals

4.1 Thematic Map Types

Thematic maps depict the variation of one (or sometimes several) geographic phenomenon across the landscape, mapping spatial and attribute information together. Meeting the UN Sustainable Development Goals requires thematic mapping, as the SDG indicators serve as thematic proxies for understanding and addressing our planet's most pressing problems. Thematic maps enable geographic imagination and spatial thinking, and often represent abstract or statistical concepts that cannot be observed directly.

Thematic maps primarily depict information that is enumerated within polygonal units, which includes many of the SDG indicators. Choropleth maps shade enumeration units by their attribute values. Proportional symbol maps scale point symbols placed at the centroids of enumeration units by their attribute values. Dot density maps adjust the density of randomly placed dots within enumeration units by their attribute values. Finally, isoline maps interpolate attribute values from the centroids of enumeration units, producing a new set of geographic linework representing the

thus different thematic maps of the same SDG indicator may lead to different conclusions even though the maps depict the same attribute data. Visual metaphors are particularly pertinent when mapping enumerated data, as information about who the phenomenon exists within space (discrete versus continuous) and varies across space (abruptly vs. smoothly) is lost during the tallying process. Thus, different thematic map types evoke one of four distinct visual metaphors about the mapped phenomenon.

Choropleth maps evoke a metaphor of continuous and abrupt phenomena, and thus congruently match governmental activities and policies that are fixed to political units. Proportional symbol evoke a discrete and abrupt metaphor, and congruently match economic sites of production and distribution, like mines, factories, offices, and stores. Dot density maps evoke a discrete and smooth metaphor, and thus congruently match human and social phenomena in their depiction of individual bodies. Finally, isoline maps evoke a continuous and smooth metaphor, and thus congruently match environ-

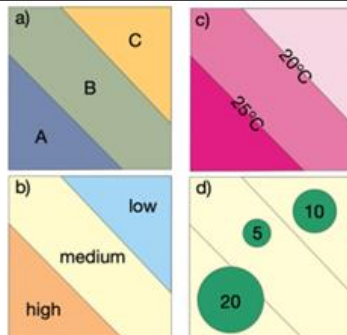
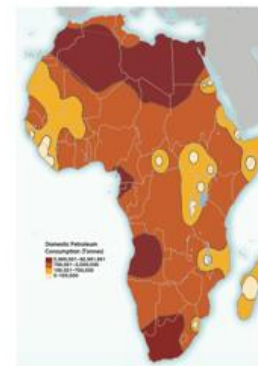
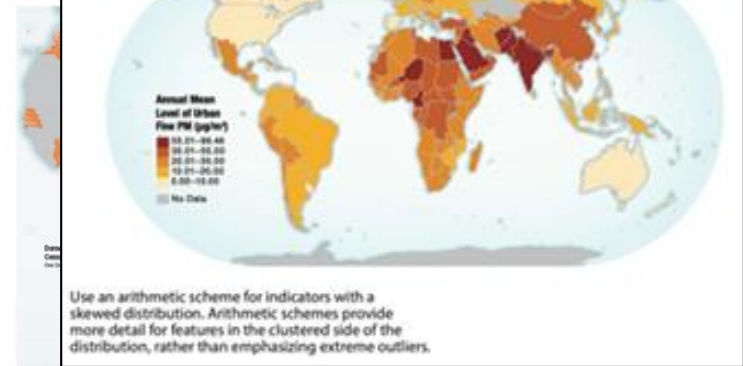
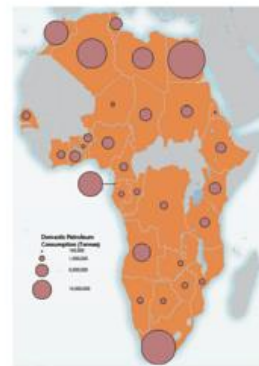


Figure 2.4-1 Measurement levels: a) nominal, b) order, c) interval, d) ratio

Ratio data is quantitative and the values are counted or calculated from a meaningful zero value. An example is the number of inhabitants for each country (Figure 2.4-1 a). Most enumerated attributes are reported at ratio level, with the fixed zero indicating the baseline count of zero.

Interval data also is quantitative, but their absolute zero is arbitrary and thus limits estimation of relative magnitudes. An example is temperature in Celsius: zero represents the point at which water freezes and not the total absence of heat (i.e.,



University of Twente
The Netherlands

10 REDUCED INEQUALITIES

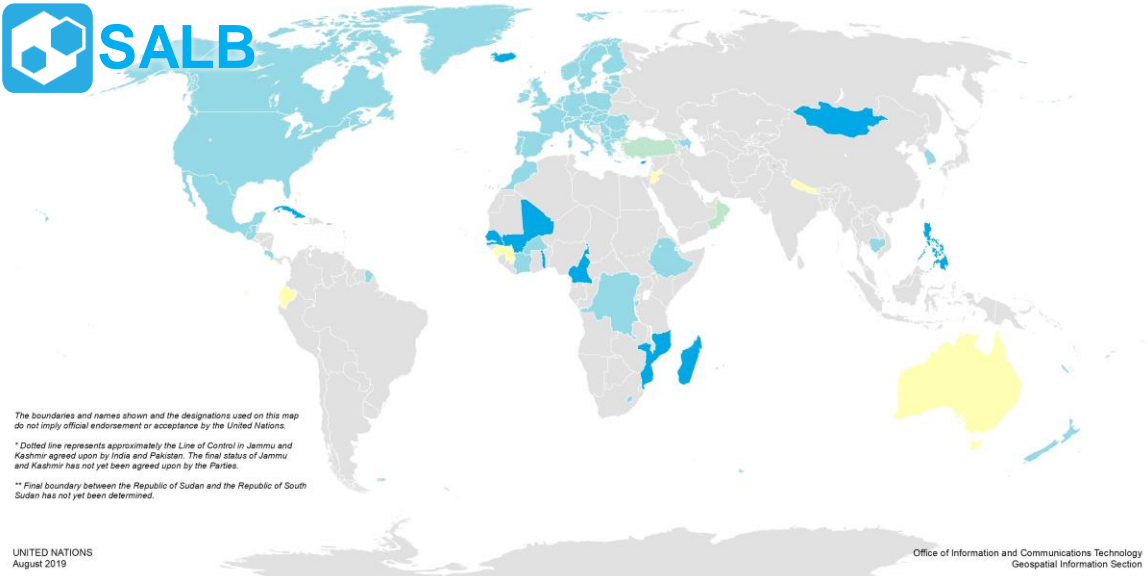
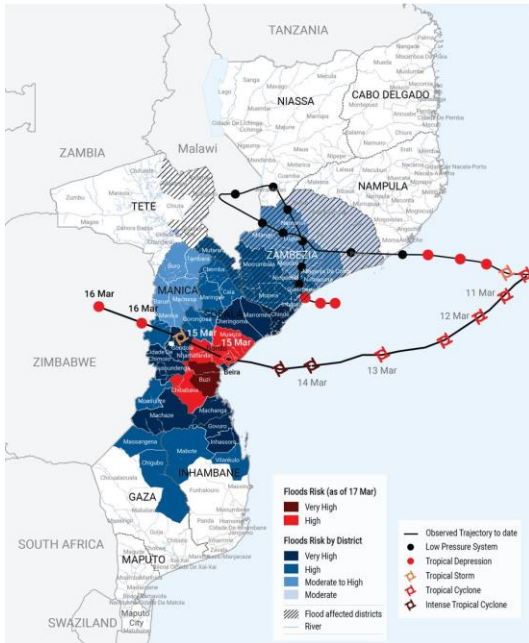


**Cyclone Idai
Mozambique**

OCHA Saviano Abreu



Providing publicly geospatial data on administrative boundaries (SALB) to promote disaggregated data to link between statistics and geographic location and for comprehensive risk/hazard assessment



The boundaries and names shown and the designations used on this map do not imply official endorsement or acceptance by the United Nations.

* Dotted line represents approximately the Line of Control in Jammu and Kashmir agreed upon by India and Pakistan. The final status of Jammu and Kashmir has not yet been agreed upon by the Parties.

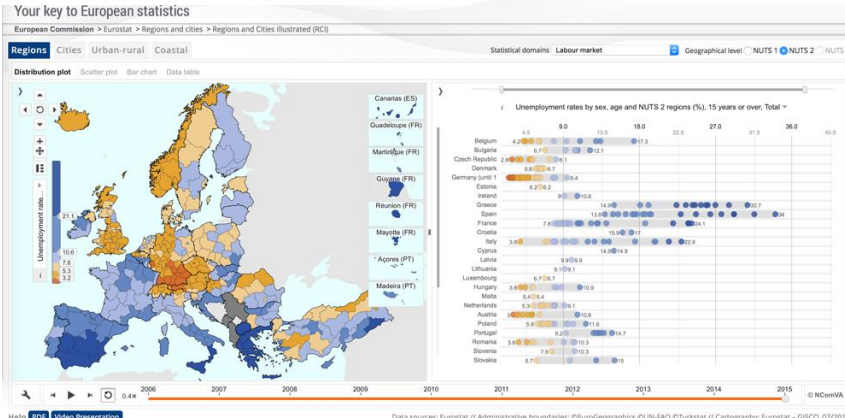
** Final boundary between the Republic of Sudan and the Republic of South Sudan has not yet been determined.

UNITED NATIONS
August 2019

Office of Information and Communications Technology
Geospatial Information Section

The boundaries and names shown and the designations used on this map do not imply official endorsement or acceptance by the United Nations.
Creator date: 17 Mar 2019. Sources: Pacific Disaster Center, INGO, Facebook, icharisma@geu.org, Twitter: @unocha_ice, www.unocha.org/ice, www.refworld.org

Legal notice | RSS | Cookies | Links | Contact | English



Economic Commission for Africa
Economic Commission for Latin America & the Caribbean





UNITED NATIONS

Geospatial Information Section

Office of Information and Communications Technology

Kyoung-Soo Eom

Chief of Section

eom@un.org

