

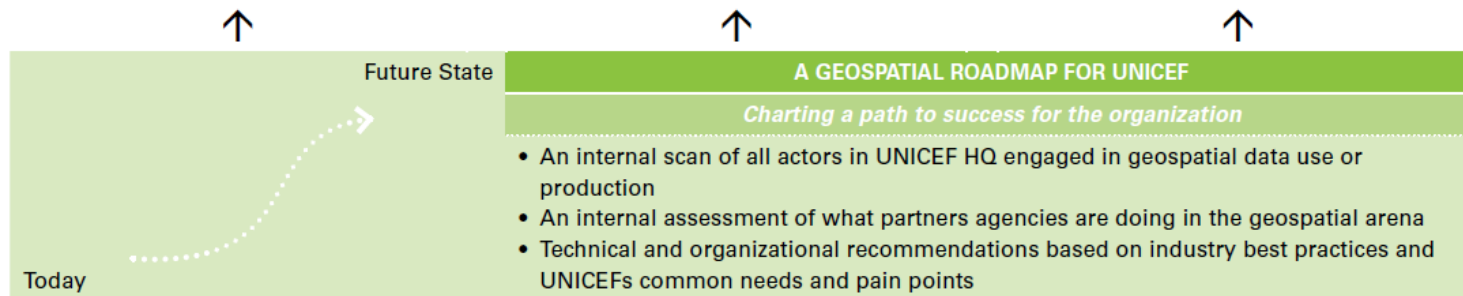
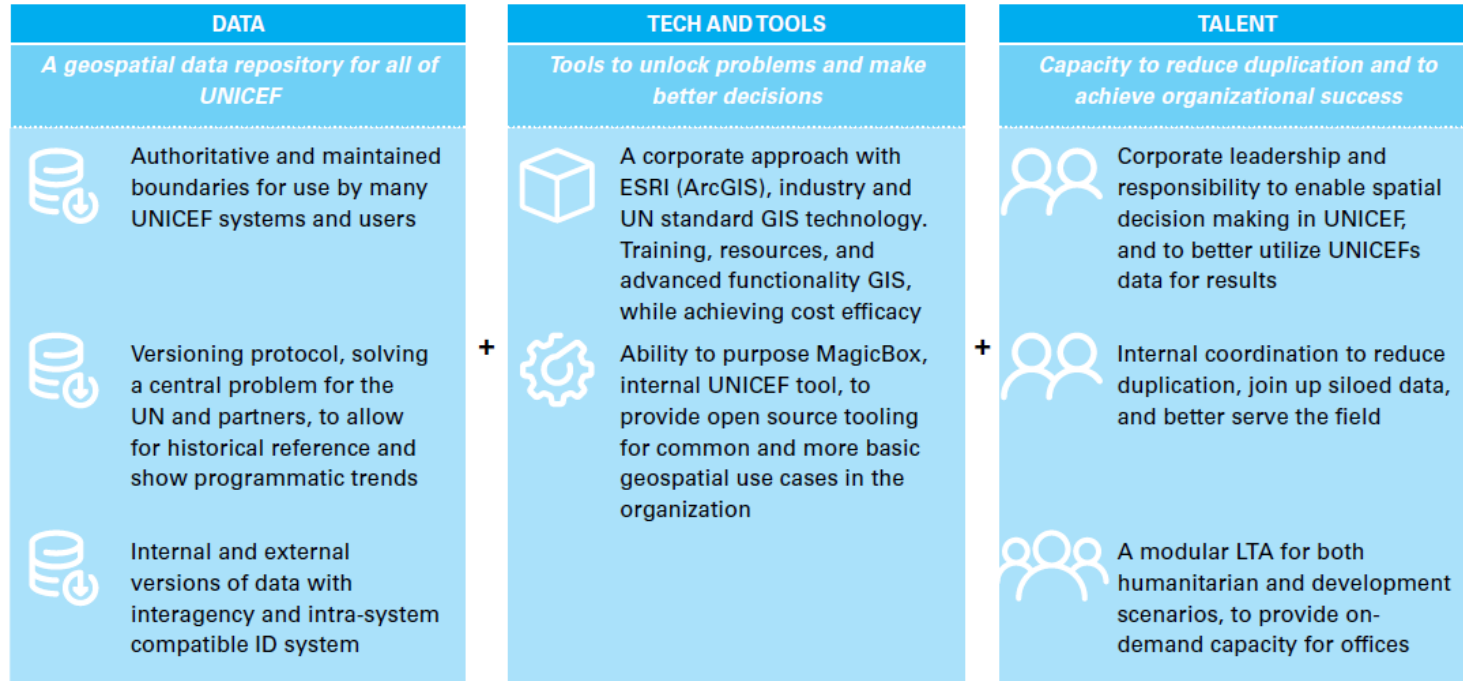


# Making geospatial a team sport

unicef 

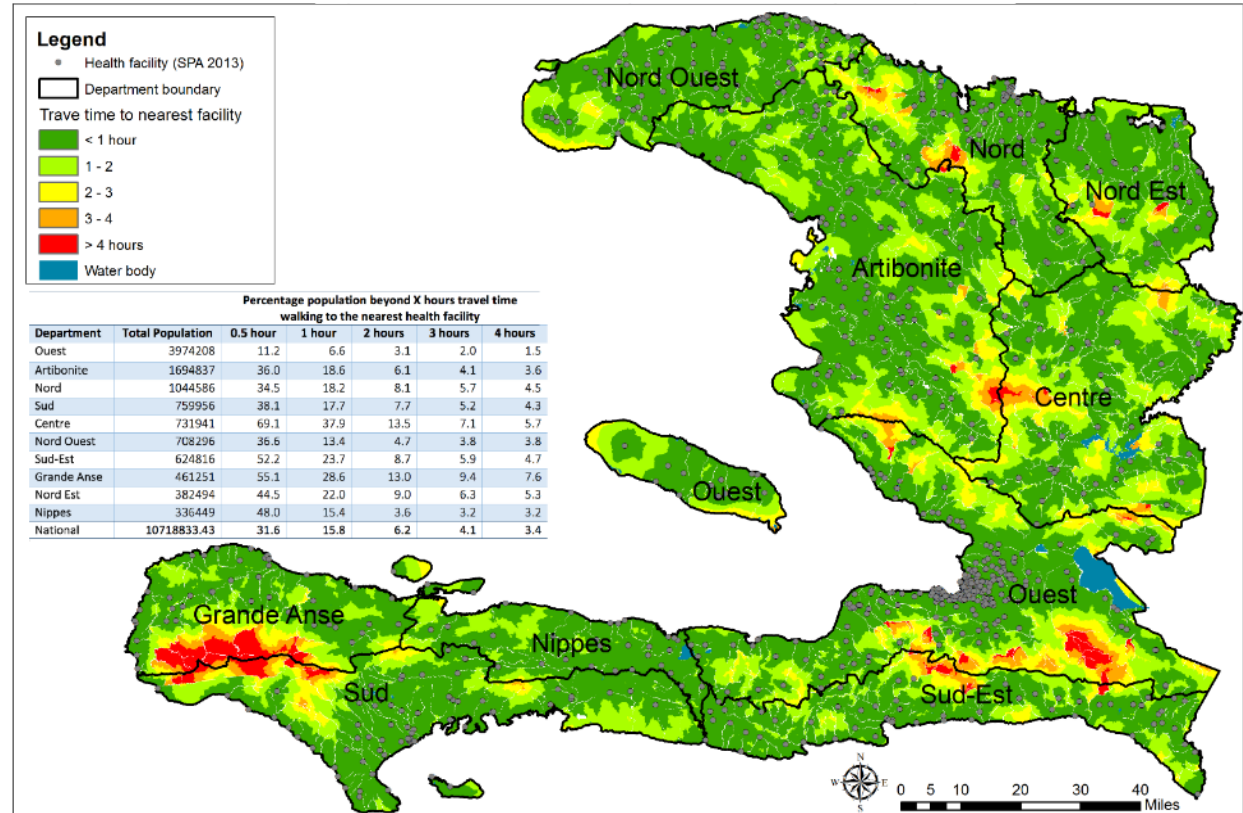
for every child

# Geo building blocks



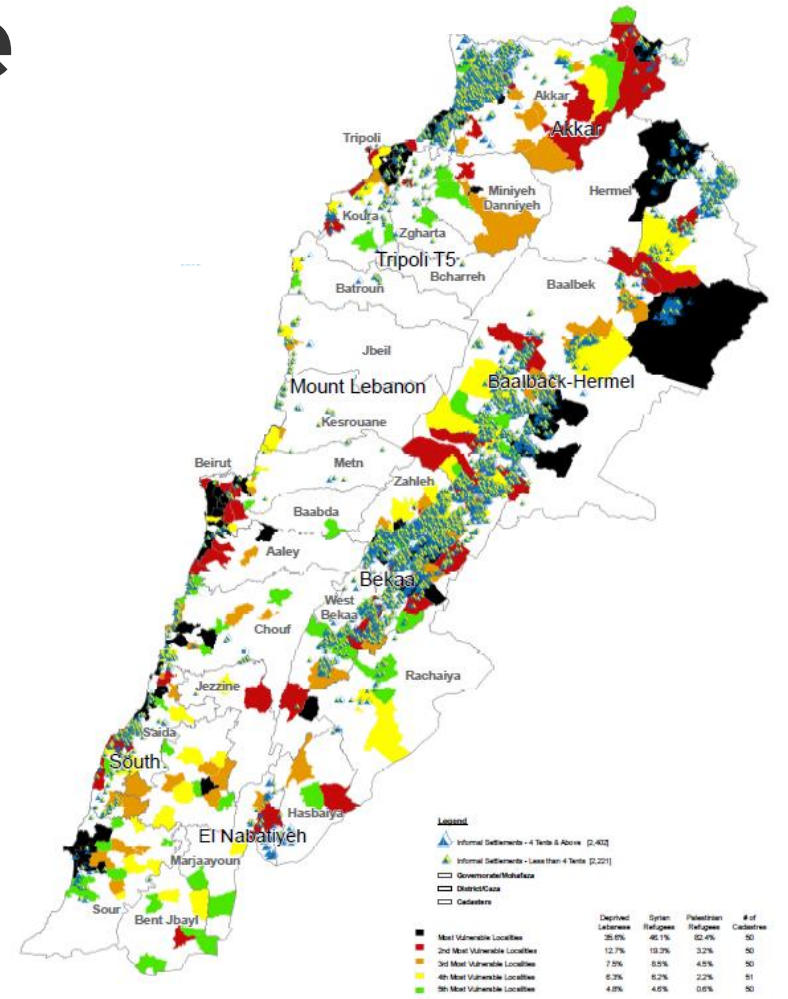


# Access to health services

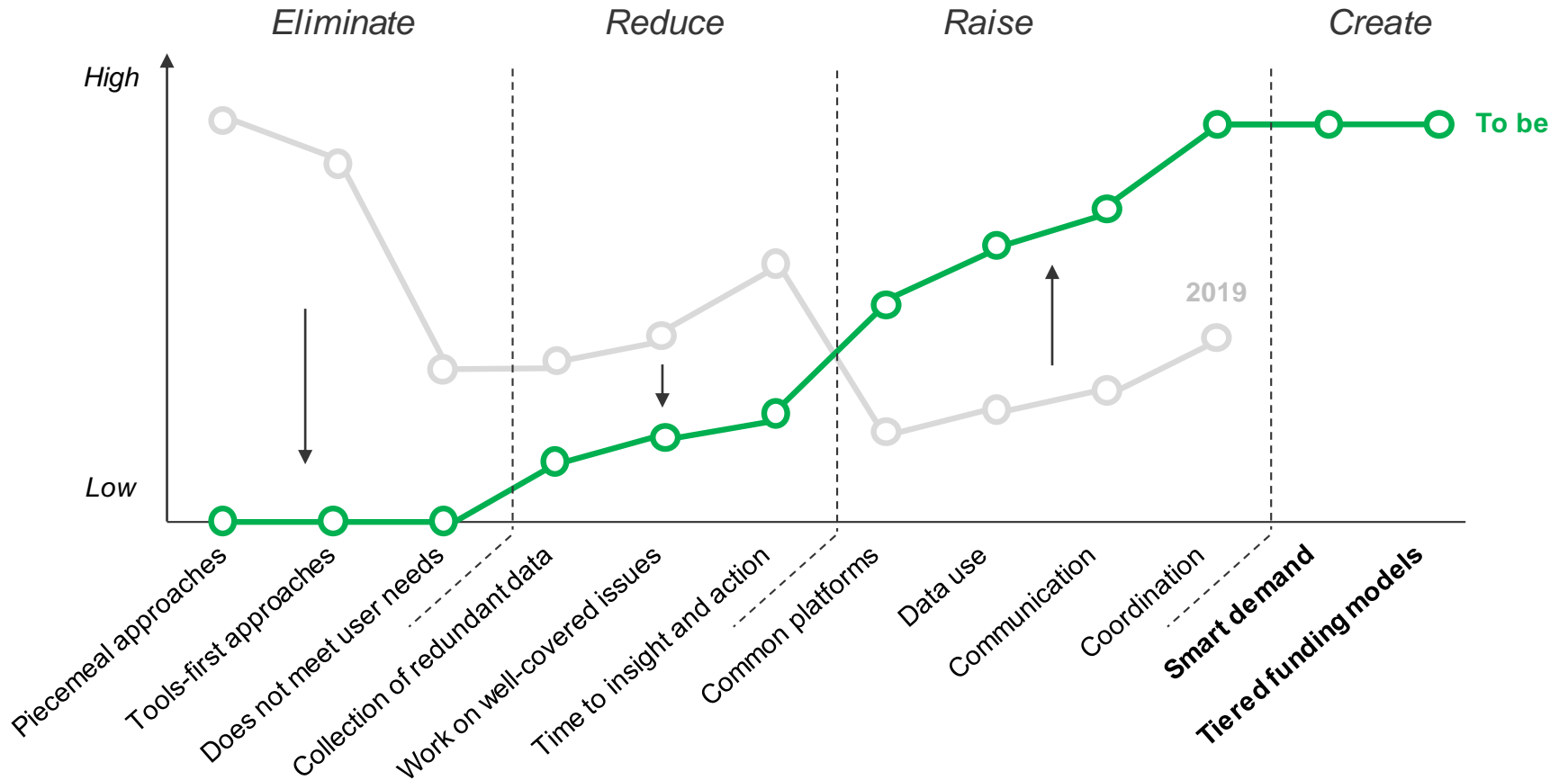


Map produced by UNICEF, April 2017. Data sources: \* Health facilities from USAID Service Provision Assessment (SPA) survey 2013 \* Department boundaries from the Centre National de l'Information Géo- Spatiale (CNIGS) \* Raster of travel time produced using AccessMod© (WHO: Modelling physical accessibility to health care and geographic coverage. <http://www.who.int/ehealth/resources/accessmod/en/>) \* Population density from Worldpop 2015 (<http://www.worldpop.org.uk/>)

# Equity in response



# A new value curve?





**Thank You**

*Toby Wicks*  
*[twicks@unicef.org](mailto:twicks@unicef.org)*