

Framework for Effective Land Administration

United Nations Headquarters, New York, 5th August 2019

Eva-Maria Unger, the Netherlands

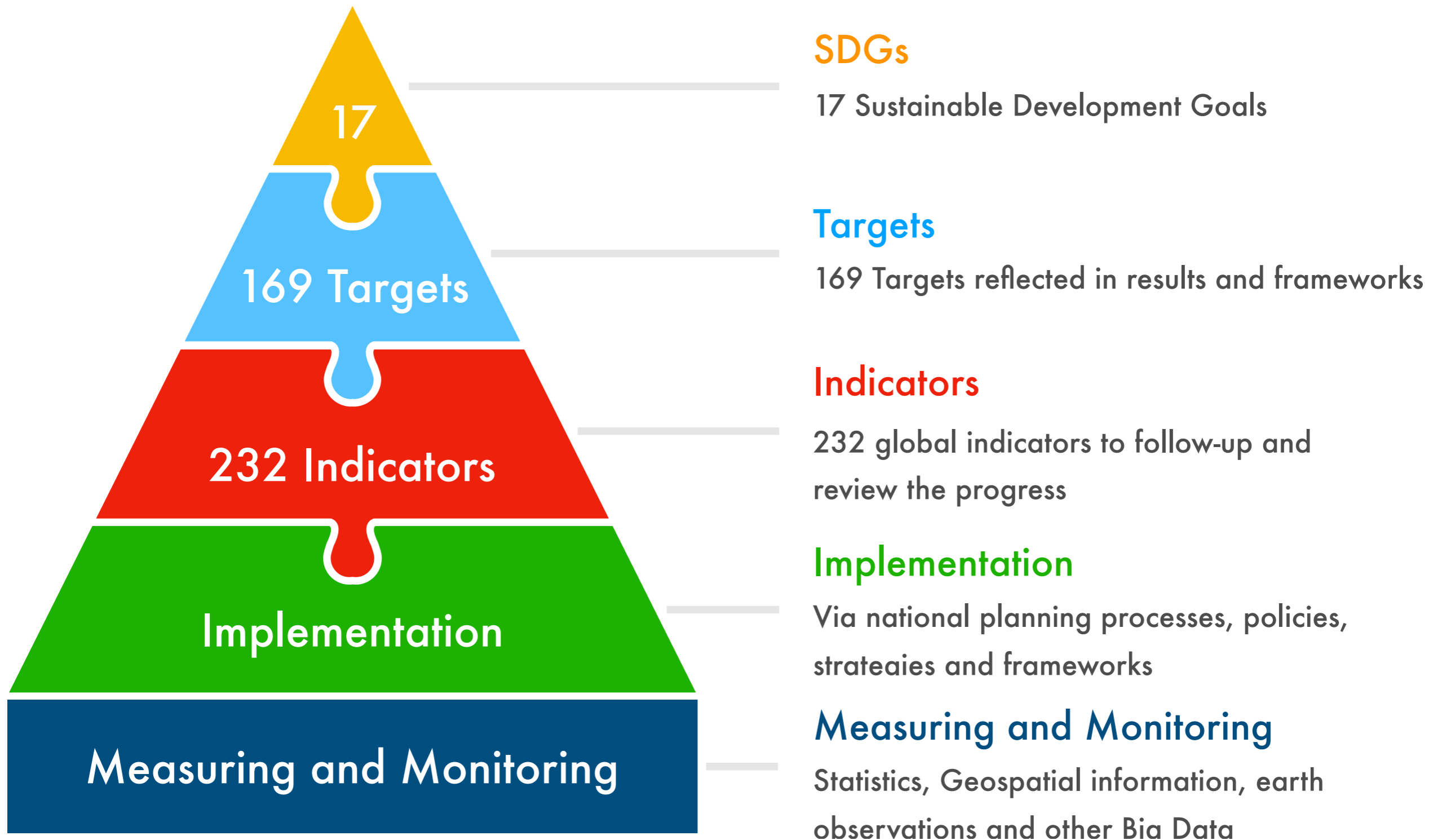
Presentation is based on documents from UN-GGIM and UN-GGIM EG LAM

<http://ggim.un.org>



UN-GGIM

United Nations Committee of Experts on Global Geospatial Information Management

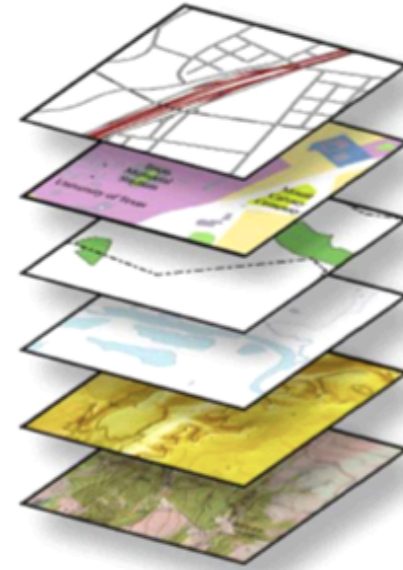




INTEGRATED GEOSPATIAL INFORMATION FRAMEWORK

A STRATEGIC GUIDE TO DEVELOP AND STRENGTHEN
NATIONAL GEOSPATIAL INFORMATION MANAGEMENT

The Integrated Geospatial Information Framework provides a basis and guide for developing, integrating and strengthening geospatial information management.



Geospatial information is a critical component of the national infrastructure and knowledge economy; a blueprint of what happens where, and the means to integrate a wide variety of government services.



UN-GGIM

United Nations Committee of Experts on Global Geospatial Information Management

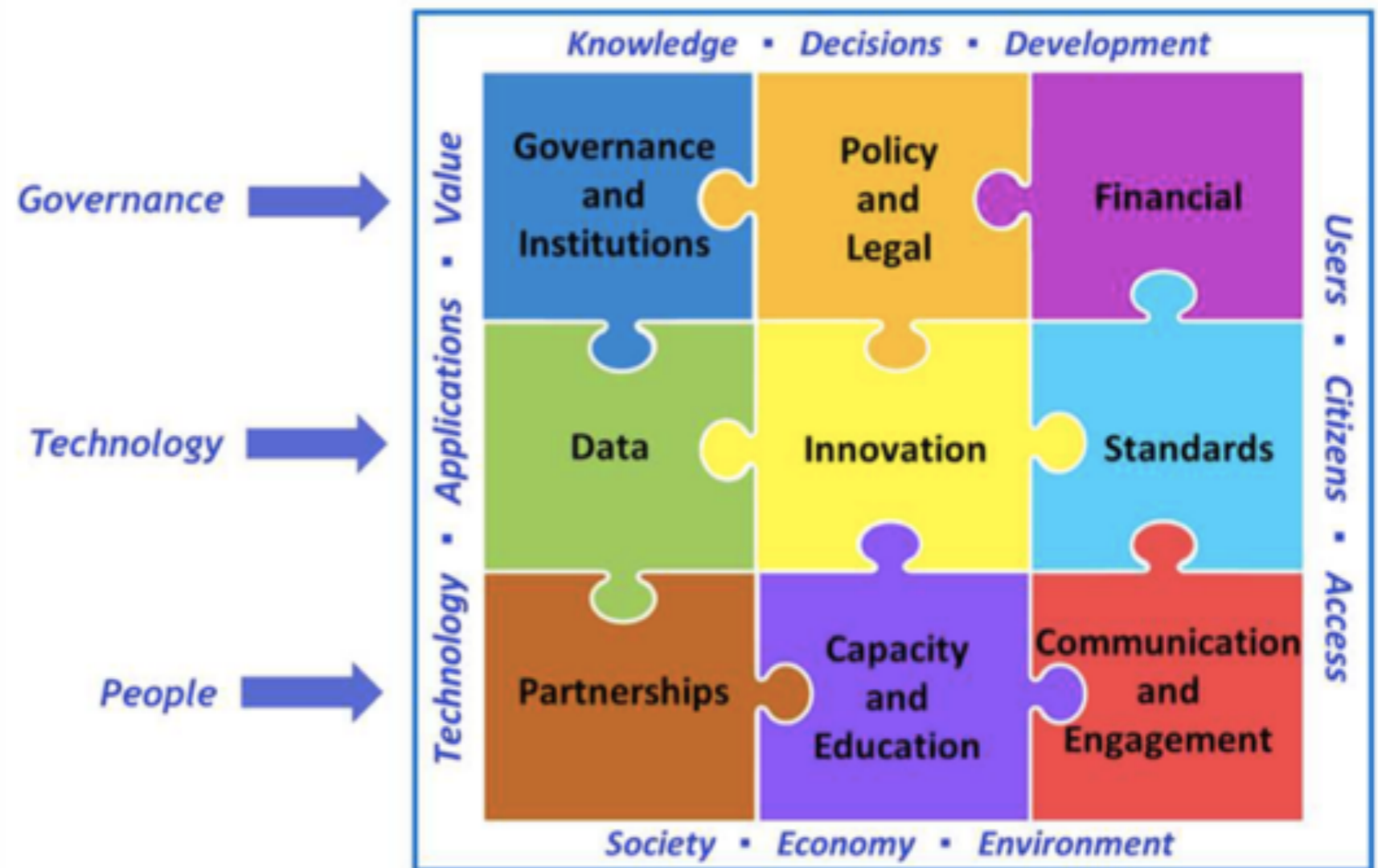


Integrated Geospatial Information Framework

A strategic guide to develop and strengthen national geospatial information management



Anchored by nine Strategic Pathways, the Framework is a mechanism for articulating and demonstrating national leadership in geospatial information, and the capacity to take positive steps.



Framework for Effective Land Administration

Two main drivers of change



Framework for Effective Land Administration

*The United Nations Committee of Experts on Global Geospatial Information Management at its eighth session in August 2018 encouraged the Expert Group on Land Administration and Management (Expert Group) to continue its advocacy and raising awareness of the merits and benefits of effective and efficient land administration and management systems, and to **formulate overarching policy guidance** that could be referenced by Member States...*



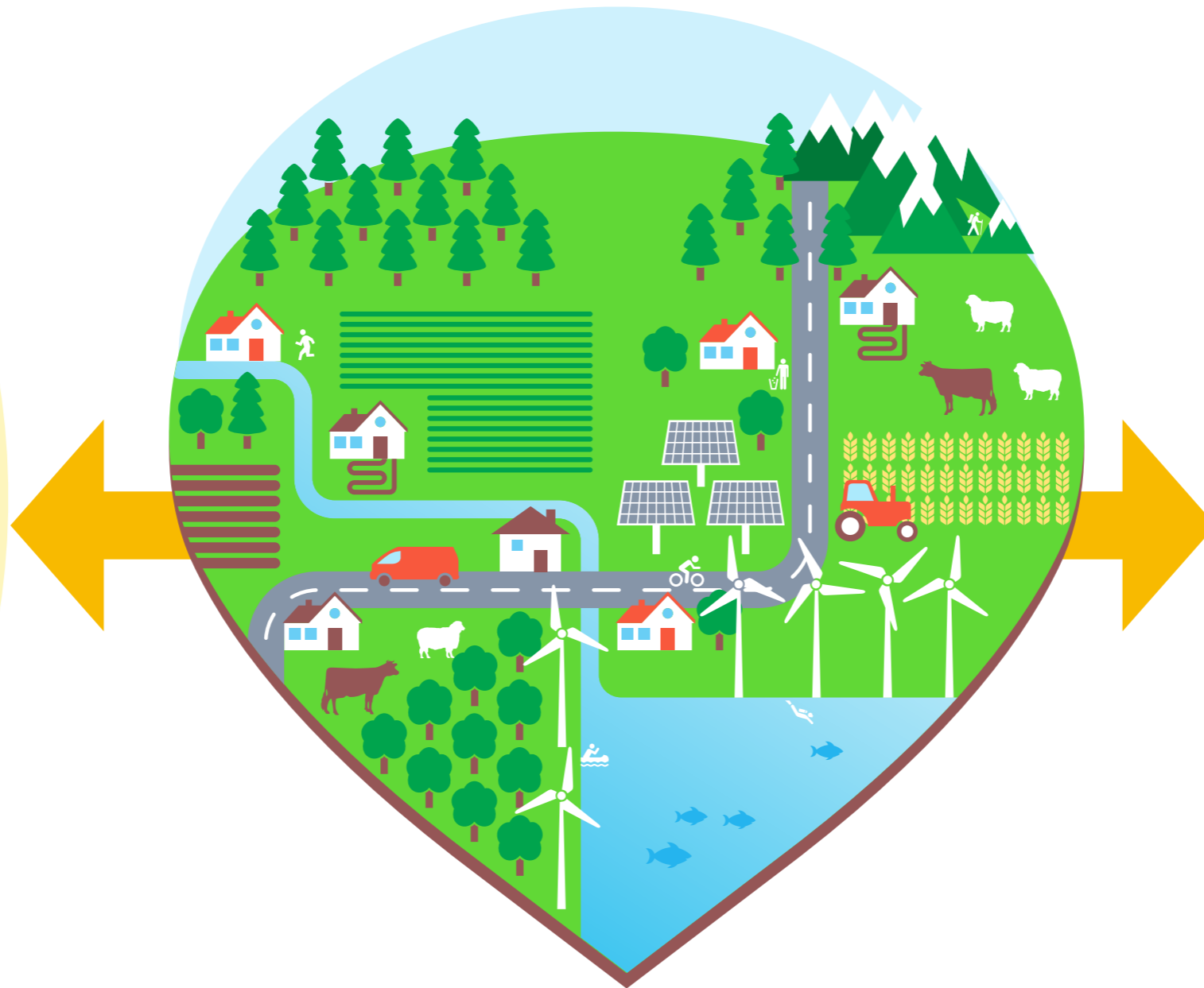
Framework for Effective Land Administration

to consider and include all *existing* and appropriate globally accepted concepts and approaches for effectively and efficiently relating people to land; documenting, recording and recognizing people to land relationships in *all their forms* towards securing land and property rights *for all*.



Framework for Effective Land Administration

Land administration relates people to land and informs on the *'how'*, the *'what'*, the *'who'*, the *'when'* and the *'where'* of land tenure, land use, land value, and land development.



Land administration systems are the basis for recording the complex range of *rights, restrictions and responsibilities* related to people, policies and places.



Framework for Effective Land Administration

Effective land administration must be *fit-for-purpose, appropriate and adequate, interoperable and sustainable, flexible and inclusive*, and able to *accelerate* efforts to document, record and recognize people to land relationships in all its forms.



Framework for Effective Land Administration

FELA acts as an *overarching policy guide*, provides a reference for Member States when developing, renewing, reforming, strengthening or modernizing land administration and management systems.



To implement

The IGIF for the land sector, and support the achievement of the SDGs



To develop

A comprehensive vision for understanding, advocating and promoting effective land administration



To provide

Strategic guidance towards country-specific action plans to be prepared and implemented



To advocate

The continuous strengthening of land administration and management procedures techniques and tools



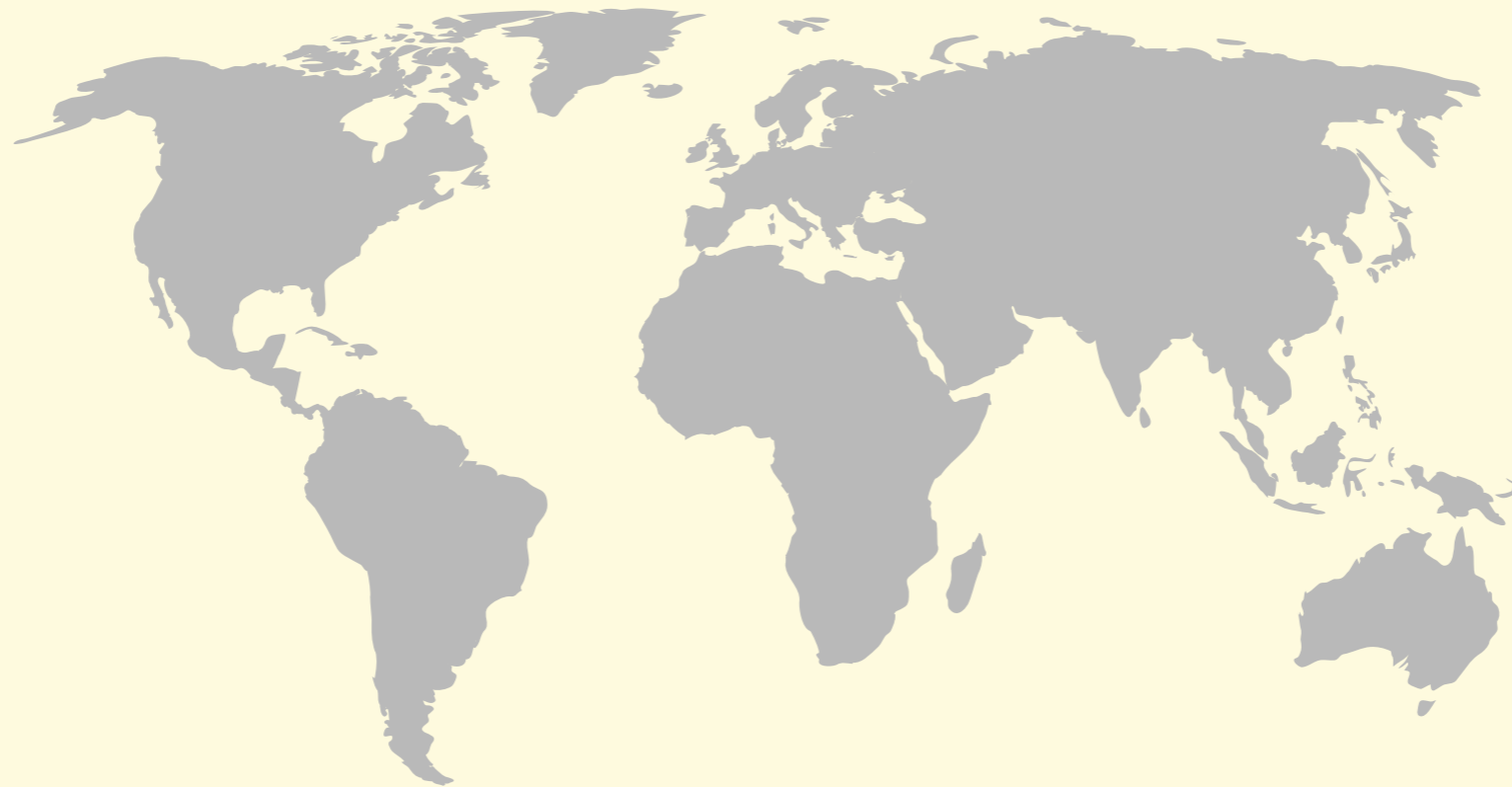
To enhance

Multilateral partnerships through policy convergence in effective land administration with a view to guiding policy development in Member States



Framework for Effective Land Administration

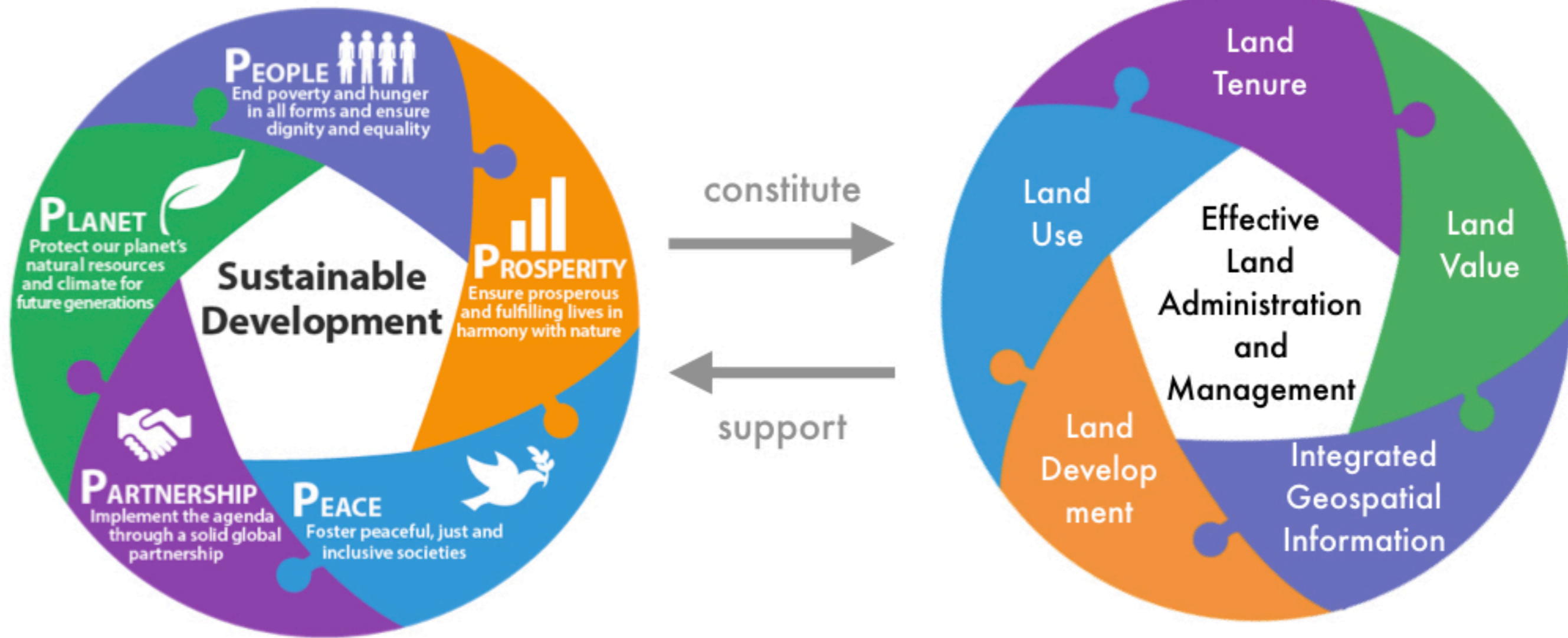
This *Framework for Effective Land Administration* is presented to the United Nations Committee of Experts on Global Geospatial Information Management for consideration.



The Framework is developed for *all* countries, jurisdictions and other stakeholders.



Framework for Effective Land Administration



Framework for Effective Land Administration

Information on land **tenure**, land **use**, land **value**, and land **development** are known to **enable economic opportunities**, reduce land related **disputes**, and support food security through **subsistence** and family farming, **agricultural productivity** and **urban food access**.

Efforts to support **gender equality**, **fair working conditions**, and **reduced inequality** – also suffer for adequate attention. Land related challenges linked to **provision of underpinning physical infrastructure** and **sustainable consumption** in cities, **rural areas**, and **marine zones** demand attention.

For the vulnerable and marginalized, and women in particular, **access to land** is demonstrated as **crucial** for ensuring **social and economic development**, food security, **empowerment**, protection from **violence and health hazards**, and enablement of participation relating to stabilization of societies in crisis and conflict



Framework for Effective Land Administration

Population increases, and technological development promotes **intense competition for resources**

The increasing number of **natural disasters** affecting the vulnerable and marginalized, who are typically **not addressed** through any land administration and land management system, has immediate **impact on resilience**

The increasing **pressures on communities, and on natural and built environments**, challenge the achievement of the **SDGs**



Framework for Effective Land Administration

Partnerships at all levels – international, regional, national and local – bring different but complementary skills, experiences, knowledge and resources

Partnerships and collaboration build the knowledge, experience, and human, technological and financial capacities to enhance effective land administration arrangements

They bring together different strengths and perspectives that stimulate creativity and innovation, often through unique capabilities, and drive achievements towards common goals



Framework for Effective Land Administration

Over the coming decades, **competition and conflict over land** is likely to intensify with the growing pressures of climate change, population growth, increased food insecurity, migration and urbanization

Governments should consider tenure insecurity issues relating to **human displacement and migration, growth in competition over land, and land use conflict**, need adaptive interventions by the state

Due to growing evidence of the link between land, armed conflict, and human rights abuses, the **United Nations (UN) system** has developed a **Secretary-General's Guidance Note on Land and Conflict** to help the UN system to be more responsive to the emerging needs of Member States and populations



Framework for Effective Land Administration

The opportunity for **fair land taxation, value capture, enforcement of land controls**, and sustainable land management interventions become apparent via land administration and land management systems

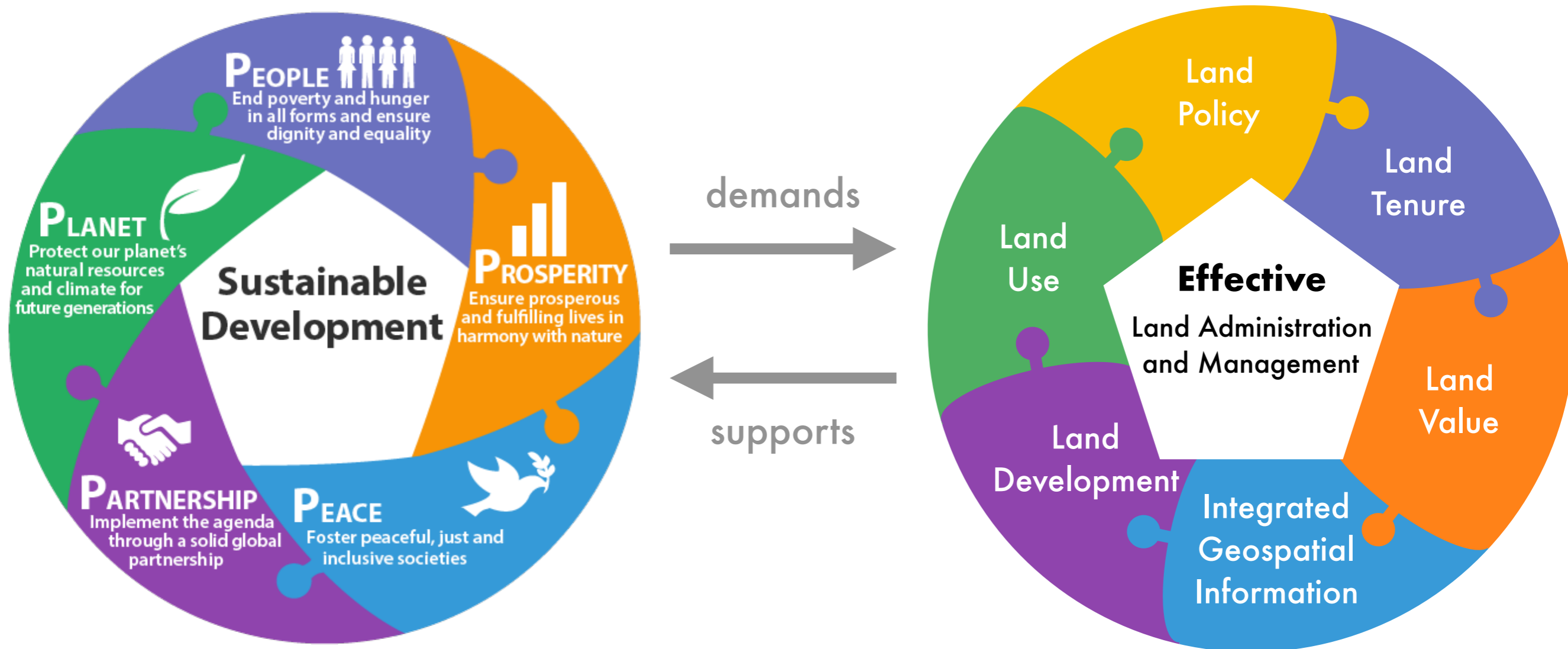
Challenges with **outdated legacy systems** or **outdated mass appraisal systems**

A **plurality of land administration and management systems** particularly in developing context, where parallel systems may have evolved with time and may be embedded in cultural and customary ways that may not always be catered for by statutory law - **interoperability challenges**



Framework for Effective Land Administration

Sustainable development *demands* effective land administration and management.
Effective land administration and management *supports* sustainable development.



Effective Land Administration

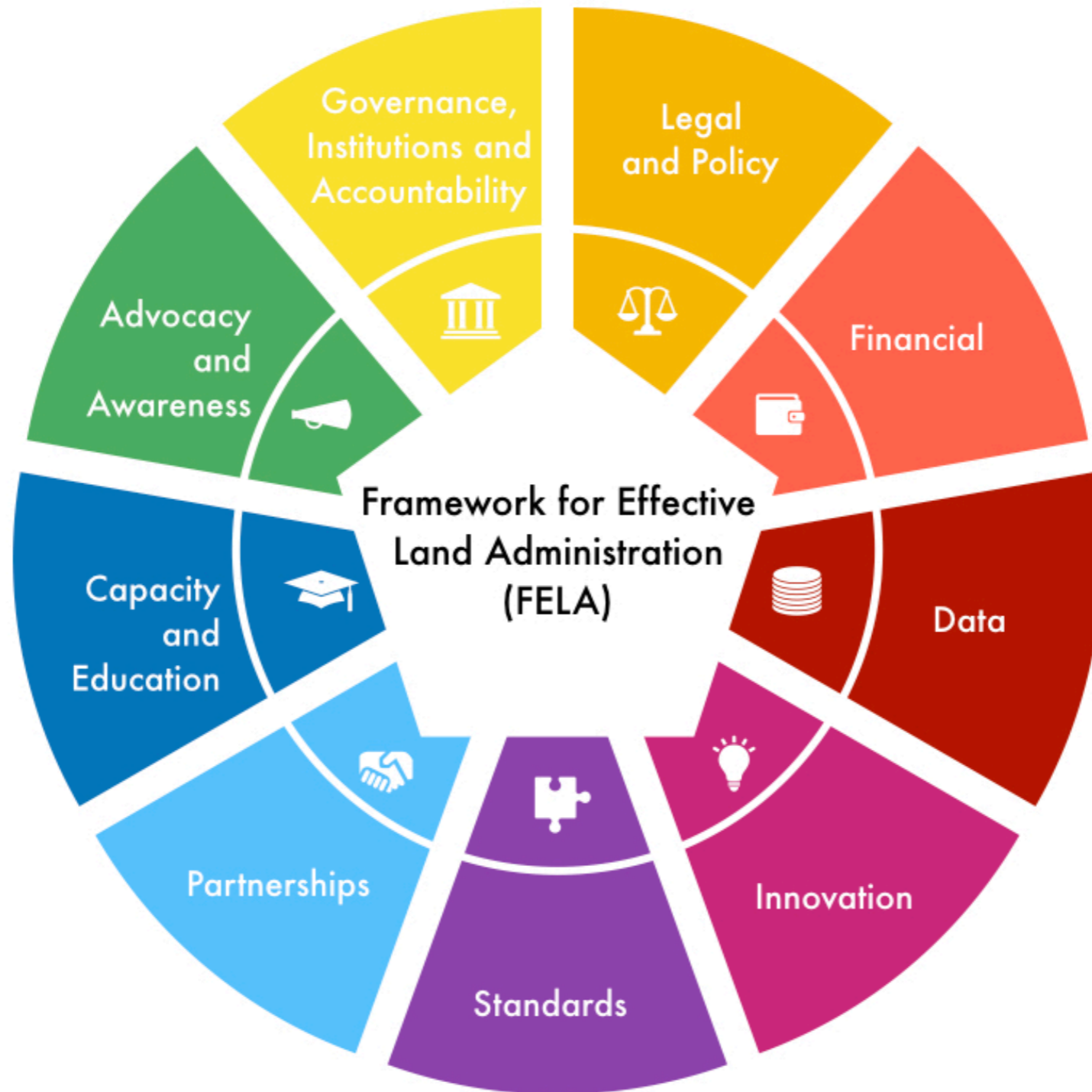
Effective land administration caters to all people, and must:

- 💡 *accelerate* the proportion of population with tenure security,
- 💡 develop confidence and *trust*, promote *security, safety, peace* and *peace building*,
- 💡 promote efficient and vibrant *land market* taking into consideration aspects of *land values* and *land development*,
- 💡 allow *economic development* through revenue systems that are *equitable and fair*, contribute to *smart and resilient societies*,
- 💡 cater to *all* circumstances, situation and people – in times of *peace and prosperity*, in times of *stress and hardship* (disaster and conflicts, migration and human displacement, poverty, food and water scarcity),
- 💡 promote *preparedness, resilience* (with increasing climate vulnerabilities), *sustainable consumption* and *strong institutions*.



Framework for Effective Land Administration

The nine strategic pathways of the Integrated Geospatial Information Framework (IGIF) guide FELA. All pathways are linked and overlap and address a specific objective



All pathways are related back to the SDGs and the IGIF, and lead to the articulation of approaches, methods and tools, specific to land administration and management, that can be used at national level for the implementation of FELA



Framework for Effective Land Administration

Goals

Transparency and accountability increased



Gender and vulnerable groups sensitive



Affordable investments and economic returns assured



Reliable data and service quality attained



Requirements

Accountable and transparent governance

Inclusive and recognise all forms of tenure

Affordable with sustainable business models

Data maintained, secure and not duplicated



Framework for Effective Land Administration

Goals

Responsible innovation oriented



Interoperability and integration supported



Cooperation, partnerships, and participation leveraged



Capacity, capability and knowledge transfer attained



National engagement and communication enhanced



Requirements

Upgradable systems and approaches

Considers internationally agreed standards

Strengthens partnerships and supports collaboration

Facilitates capacity development and knowledge transfer

Advocates for land administration and management



"... the document is an assemblage of land administration-related elements of international guidelines and frameworks. The aim of the document is well-defined and justified..." - UN-Habitat GLTN

"... is a document that perfectly summarizes the individual efforts in a group work..." - Mexico

"... a reference to the United Nations declaration on the Rights of Indigenous People (UNDRIP) ..." - Canada

"... the term 'Effective' would need to be defined..." - Belgium

FELA Review Comments

"Congratulations on the document. It's fantastic!!!!!" - Spain

"... it was well appreciated internally at the IGB..." - Burkina Faso

"... as we would say in Tonga 'Malo E Ngau!' - thank you for your efforts... nothing more to add as this reflects the groups previous discussions." - Tonga

"We suggest linking the VGGT in each of the 9 Strategic pathways and clarify the use of IGIF and geospatial information/technology to improve land administration"

- FAO and World Bank

"This document looks good, although I always like a lot of technology" - UN-GGIM Private Sector Network

Framework for Effective Land Administration

Conclusion

- 💡 The SDGs calls for all people-to-land relationships to be documented
 - 💡 New - IGIF as overarching Framework
 - 💡 UN-GGIM EG LAM developed a framework for effective land administration
 - 💡 FELA - specifically for Land Administration and Management
 - 💡 FELA elaborates on the strategic pathways of IGIF
- 💬 Pathways describe Guidelines, Tools and Principles for Land Administration which are *ALREADY* established

