

# Funding models for institutional arrangements in the context of a national SDI: the case of Chile

Alvaro Monett Hernández  
Executive Secretary SNIT Chile  
Vice-President UN-GGIM Américas

Fifth Meeting of UN GGIM Committee of Experts  
Side Event on Institutional Arrangements  
New York, August 4<sup>th</sup>

# Background

The term “institutional arrangements” incorporates the networks of entities and organizations involved in planning, supporting, and/or implementing Geospatial Information Management programs and practices.

Institutional arrangements include the involved and **responsible organizations**, their **human resources**, funding, **equipment and supplies**, leadership, effectiveness, and the communication links between and among organizations.

Trends in national institutional arrangements in geospatial information management, UNITED NATIONS, **E/C.20/2014/5/Add.1**

# National model for geospatial information management

- ❑ National Mapping Organization (NMO) generating Geospatial Reference Information and a wide range of thematic data.
- ❑ NMO generating GRI and integrating thematic information coming from several governmental (ministries) and no governmental bodies
- ❑ Federal Governments generating thematic data, integrating with GRI provided by the NMO
- ❑ Fully distributed model based on the development of sectorial SDI (ministries) and territorial SDI (in regions or provinces in a country) and connected under interoperability protocols

# National model for geospatial information management

- National Mapping Organization (NMO) generating Geospatial Reference Information and a wide range of thematic data.
  - NMO generating GRI and integrating thematic information coming from several governmental (ministries) and no governmental bodies
  - Federal Governments generating thematic data, integrating with GRI provided by the NMO
- Fully distributed model based on the development of sectorial SDI (ministries) and territorial SDI (in regions or provinces in a country) and connected under interoperability protocols

**CHILE**

# The case of Chile: fully distributed model for management of geospatial information

**Thematic information**

**Public Works**

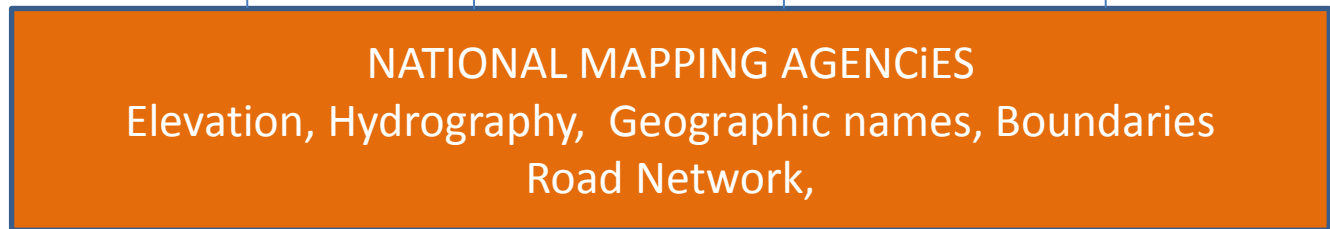
**Health**

**Energy**

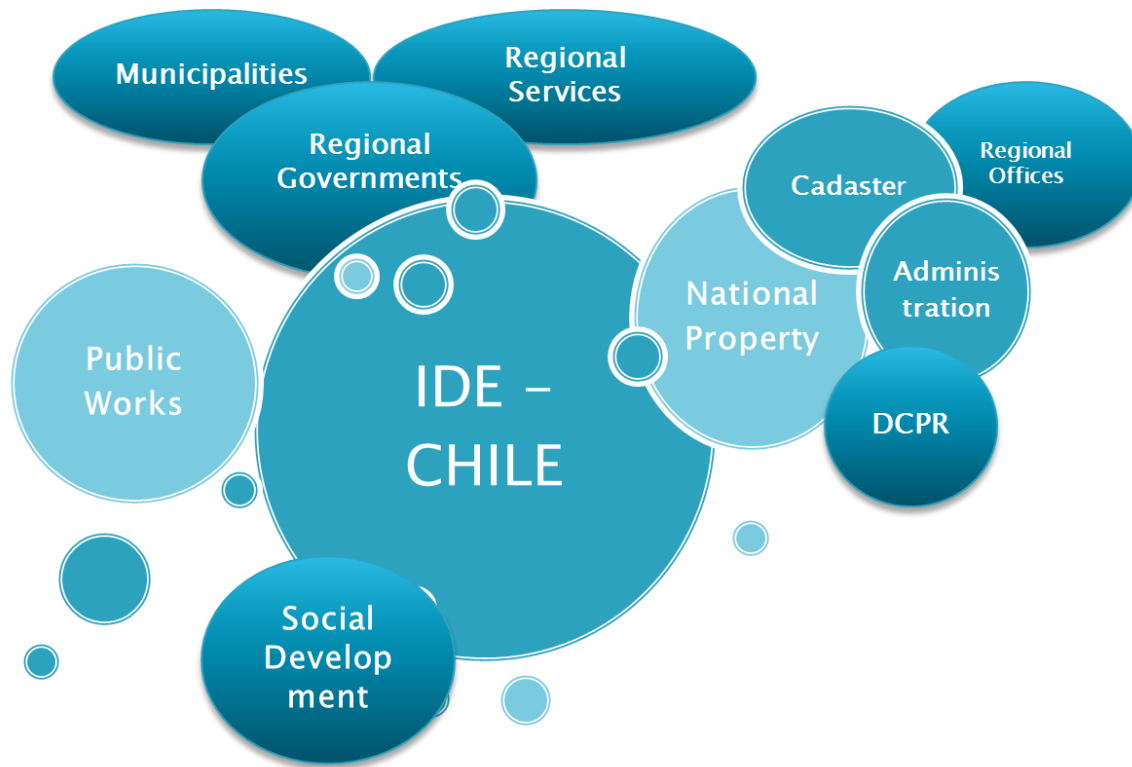
**Housing**

**Education**

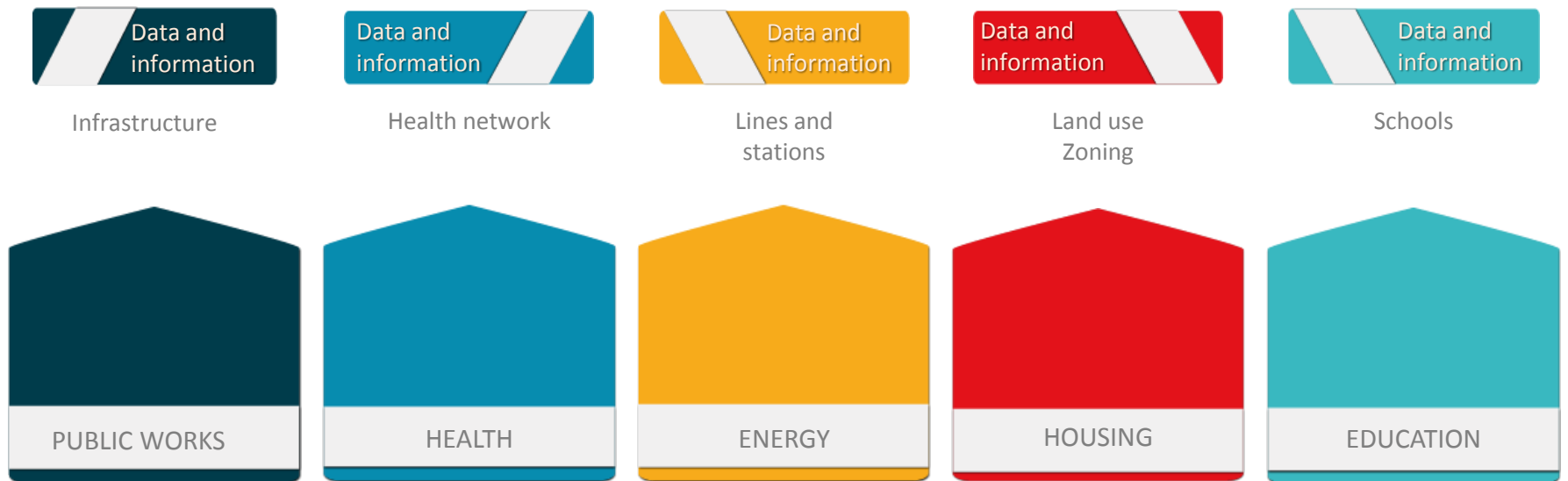
**Geospatial Reference Information**



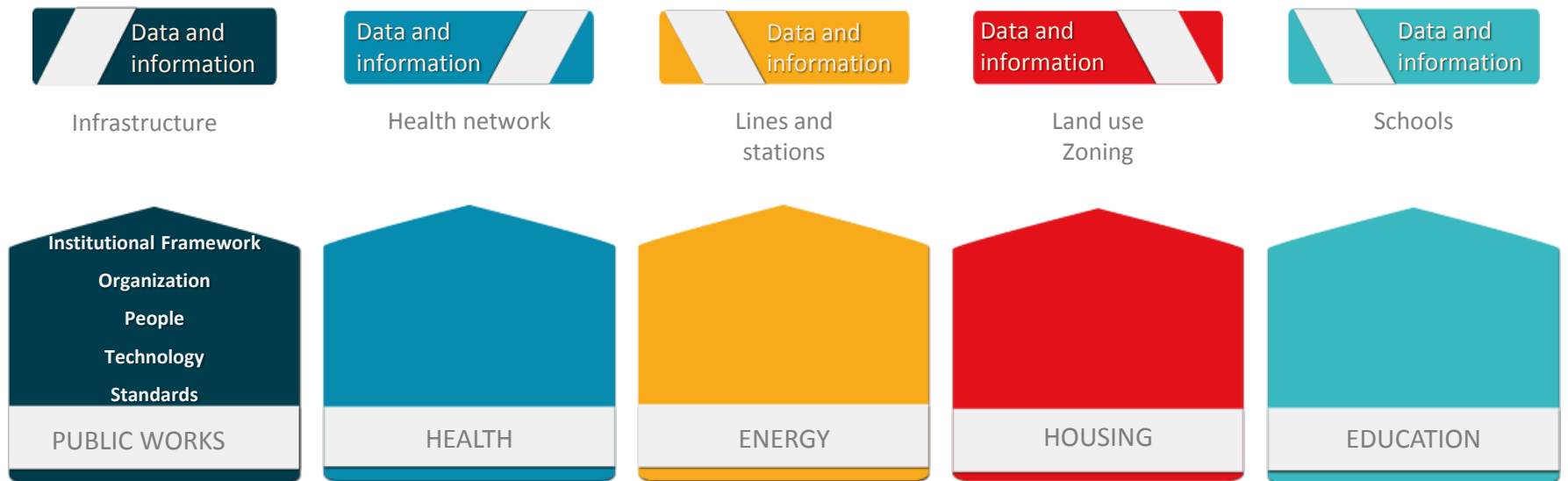
# The case of Chile: fully distributed model for management of geospatial information



# The case of Chile: fully distributed model for management of geospatial information

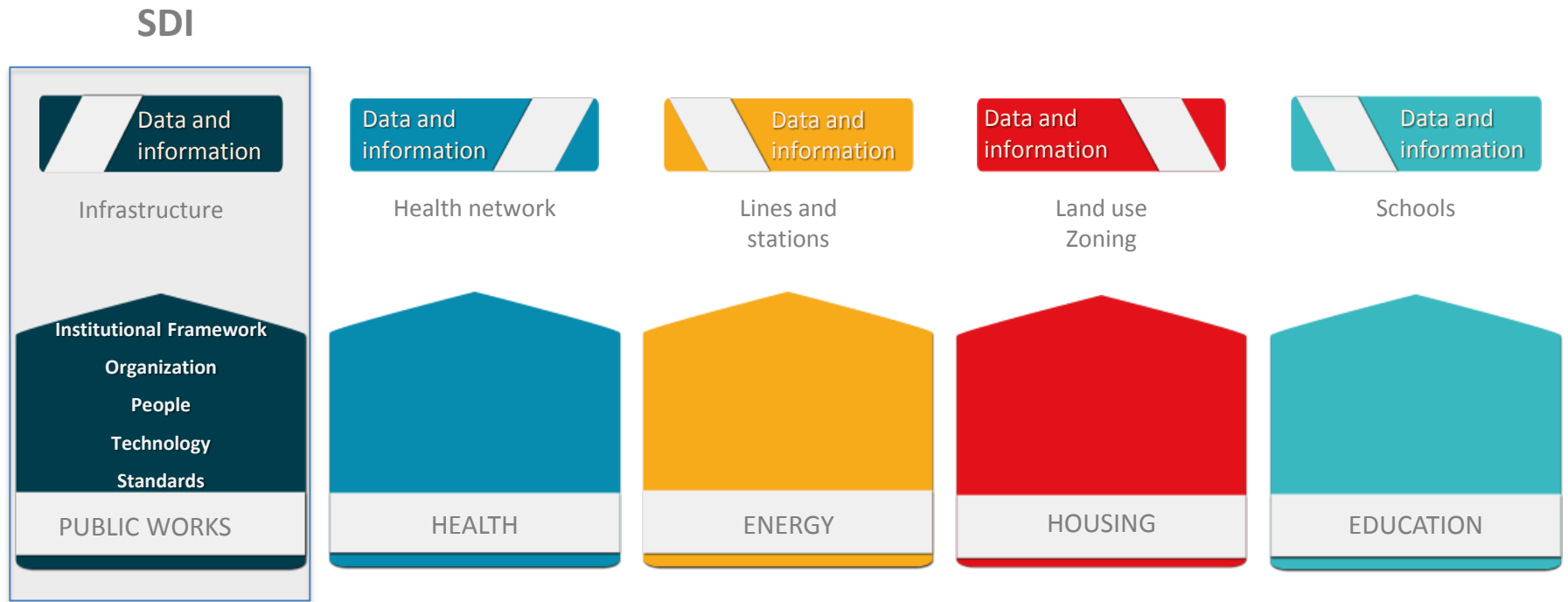


# The case of Chile: fully distributed model for management of geospatial information

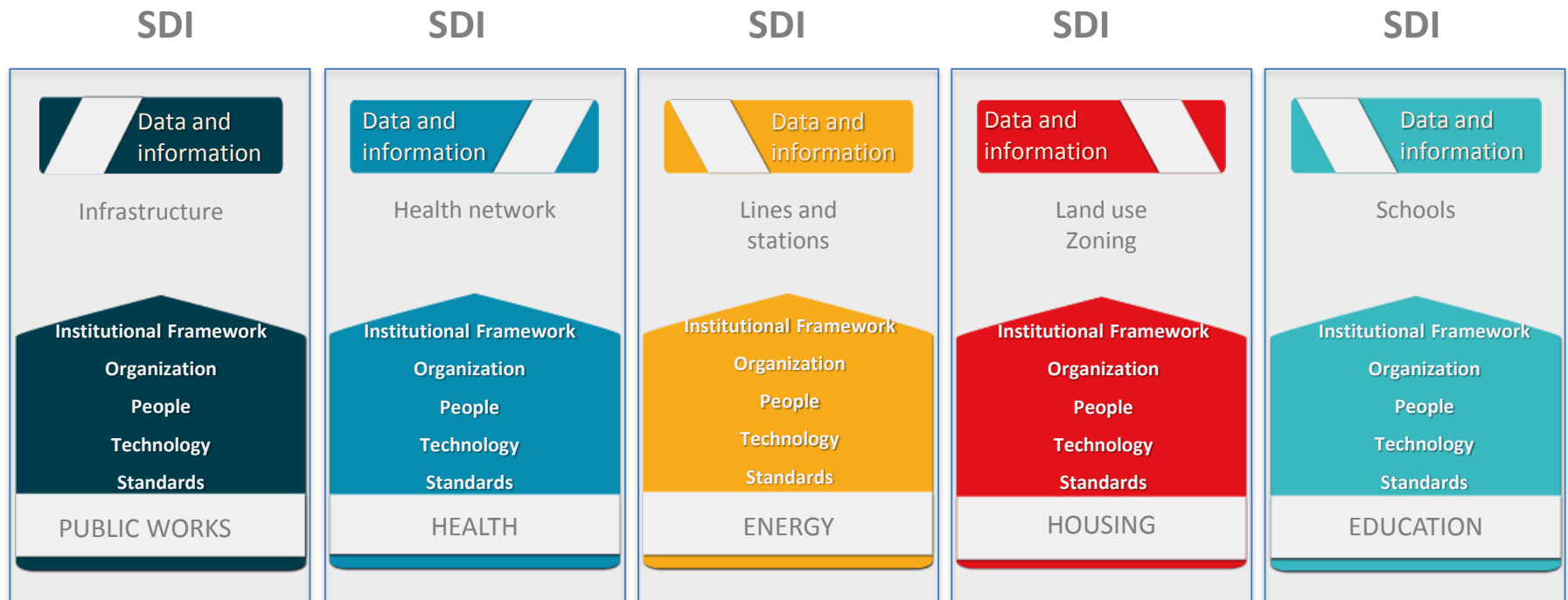




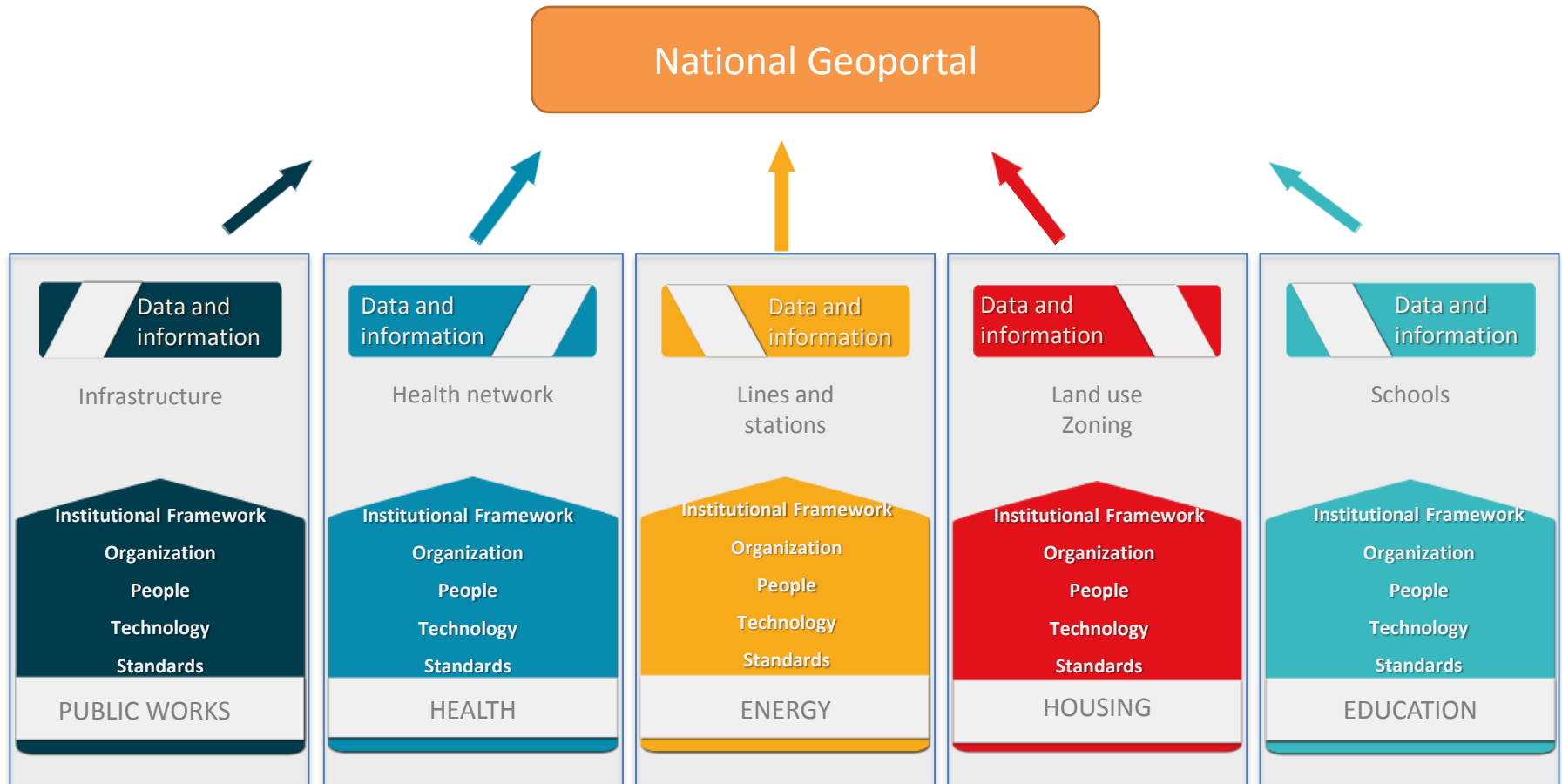
# The case of Chile: fully distributed model for management of geospatial information



# The case of Chile: fully distributed model for management of geospatial information



# The case of Chile: fully distributed model for management of geospatial information



# The case of Chile: fully distributed model for management of geospatial information



## SDI in the 15 regions of the country

- ✓ Regional government conducting the SDI (**coordination and leadership**)
- ✓ Regional **technical teamwork** for processing and analyzing geospatial information
- ✓ Regional **geoportal for dissemination** of geospatial information

# Funding models for institutional arrangements

## TWO SCENARIOS

Current legal  
framework

**Supreme Decree  
N°28, 2006**

Coming legal  
framework

**Law project  
for chilean SDI**

# Funding models for institutional arrangements

## Geospatial Reference Information

### Current

- ✓ **NMO selling to public** agencies (self funding necessity arising from organic laws)
- ✓ **Royalty** after the first purchase

### Law project for Chilean SDI

- ✓ **Complementary budget** to NMO so that they distribute GRI free of cost
- Elevation
- Hydrography
- Road Network
- Geographic Names
- Administrative Boundaries
- National imagery

# Funding models for institutional arrangements

## SDI in ministries

### Current

- ✓ **Sectorial budget:** Individual presentation of initiatives to national budget
  - Software and hardware
  - Data collection and generation
  - Coordination activities
  - Capacity building
- ✓ **Lack of coordination** among sectorial requests

### Law project for Chilean SDI

- ✓ **National program** providing resources to public agencies for managing geospatial information (annual presentation, nationwide)
- ✓ **SDI Division** coordinating the requests

# Funding models for institutional arrangements

## SDI in the regions

### Current

- ✓ Geospatial information management is **hidden** inside **other functions** inside regional government (no explicit budget for this activity)
- ✓ Projects funded by specific sources (not permanent in time)

### Law project for Chilean SDI

- ✓ **National program** providing resources to public agencies for managing geospatial information (annual presentation, nationwide)
- ✓ **SDI Division** coordinating the requests



# Institutional arrangements to be analyzed in terms of funding models

## Relationship Academy – State:

- State providing data to the Academy for research.
- Academy generating knowledge, supporting decision making and public policies in the State.

## Intersectorial working groups:

- National committee for standards and technical specification (it has been operated under specific projects related with innovation, but has not continuity).
- Geospatial Reference Information Working Group (partial dedication of the technical staff)

# Final remarks

- It is suggested to study institutional arrangements and funding models for the **different realities** in terms of nationwide models for geospatial information management.
- Documentation and exchange of best practices related to funding models/institutional arrangements will open the alternatives that every country may take in order to strengthen geospatial information management processes.
- Legal framework in Chile could be a crucial variable in getting more efficient funding models.

Thank you very much ;

[amoneth@mbienes.cl](mailto:amoneth@mbienes.cl)