



DANE

First UN-GGIM Interregional Webinar on the UN-IGIF: Enhancing regional collaboration to support national implementation

IGIF Implementation in Colombia: Lessons and Insights

June 2025

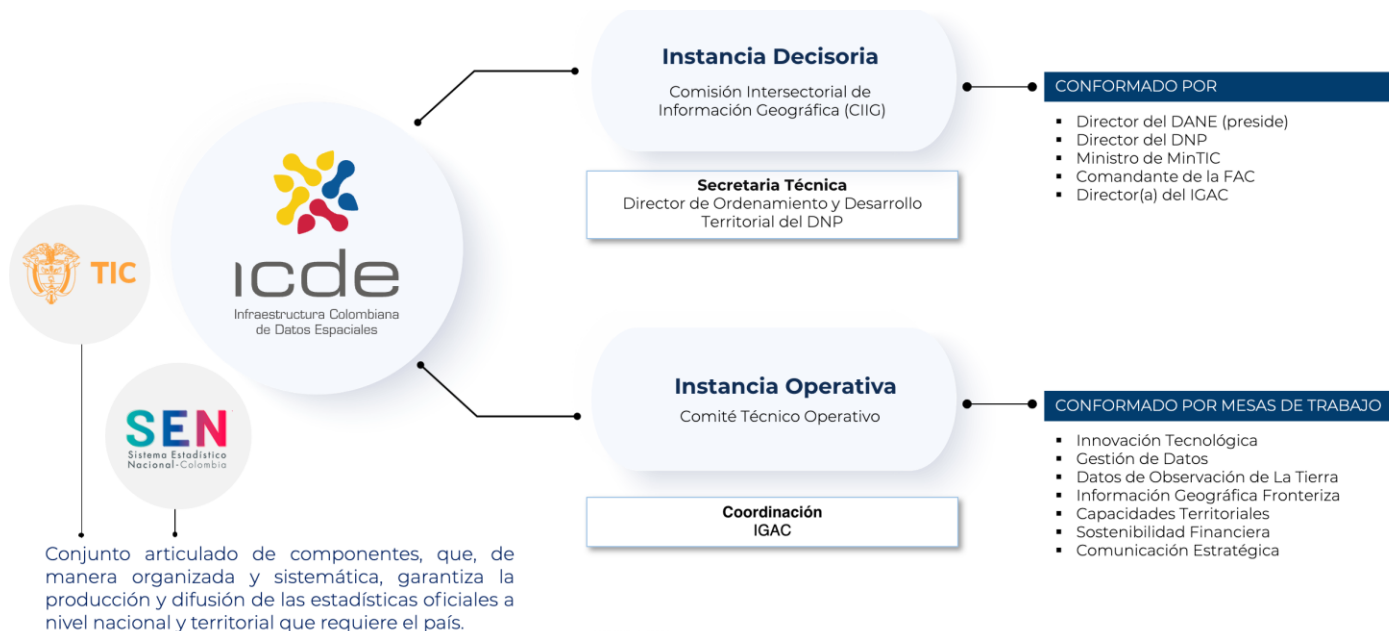


Colombian Spatial Data Infrastructure -ICDE



The ICDE defines the **national geographic information ecosystem** and promotes the interoperability of national information systems, intersectoral coordination, accessibility, and the use of information for the adequate and efficient management of the country's geospatial resources.

Resolution 899 of 2023 establishes the structure and operation of the ICDE.



National Strategic Plan for Geographic Information -PEIGN



Within the framework of Resolution 899 of 2023, the ICDE is mandated to formulate and publish the National Strategic Plan for Geographic Information.

Article 9: National Strategic Geographic Information Plan – PEIGN

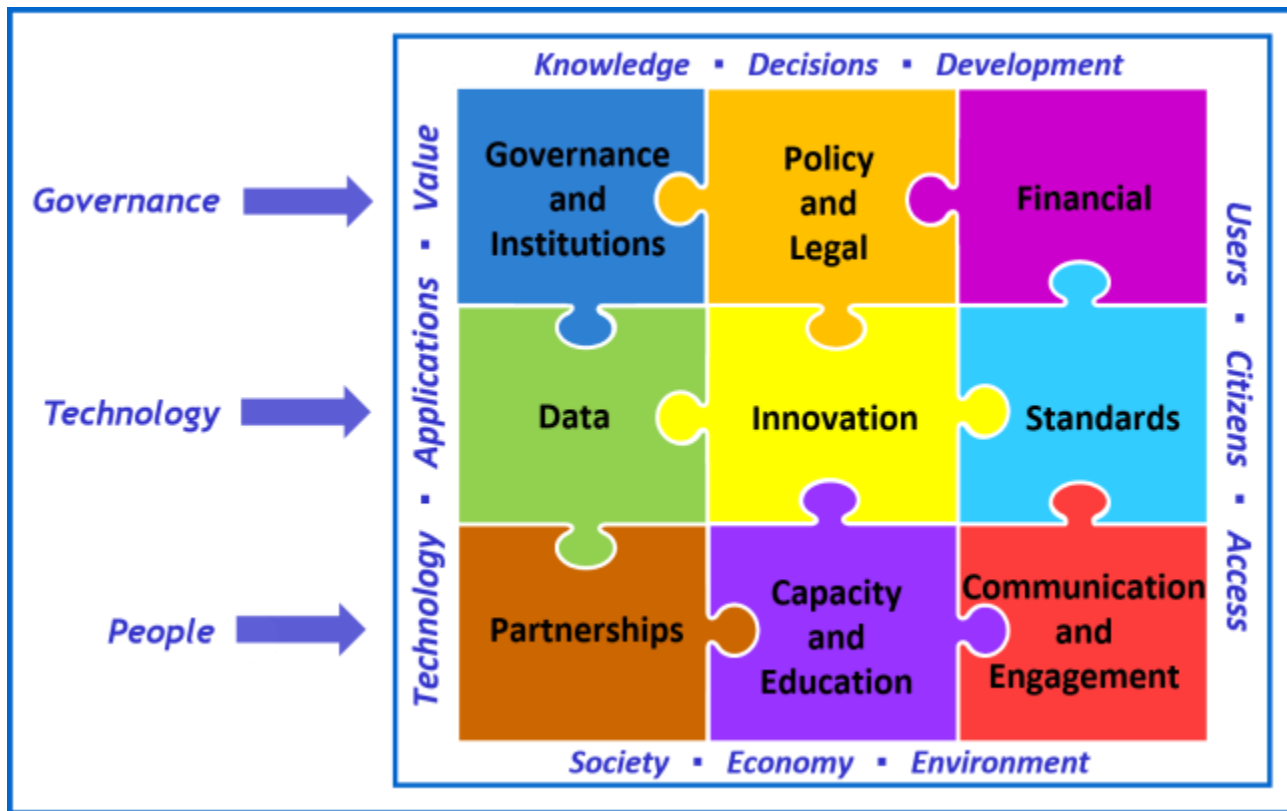
*The National Strategic Geographic Information Plan (PEIGN) shall be established as the country's primary planning instrument for the management of geographic information, and shall be **aligned with the National Statistical Plan (PEN)**. The PEIGN will outline the guidelines and actions necessary to promote the production, management, accessibility, and use of geographic resources to achieve the objectives of the ICDE. This plan shall be issued every four (4) years, following a consultation and outreach process with the members of the Commission and other entities deemed relevant by the Committee.*



Reference Framework and Strategic Drivers – PEIGN



Alignment with UN-IGIF



PEIGN Participation Strategies



PEIGN Communication and Consultation Process



Webinar

more than
100 people

National Workshop

more than
85 representatives
of organizations

PEIGN Feedback

9 Working
Groups

Territorial Strengthening

- Sessions with municipalities
- Participation of regional entities and community representatives

Institutional coordination

National data coordination bodies

Survey of unsatisfied
demand for geospatial
information
153 answers

1. ICDE

ICDE Context and Governance Framework (Resolution 899 of 2023)



2. Framework and strategic drivers

International Reference Framework – IGIF
National Reference Framework: National Development Plan



3. Geographic Information Management Status

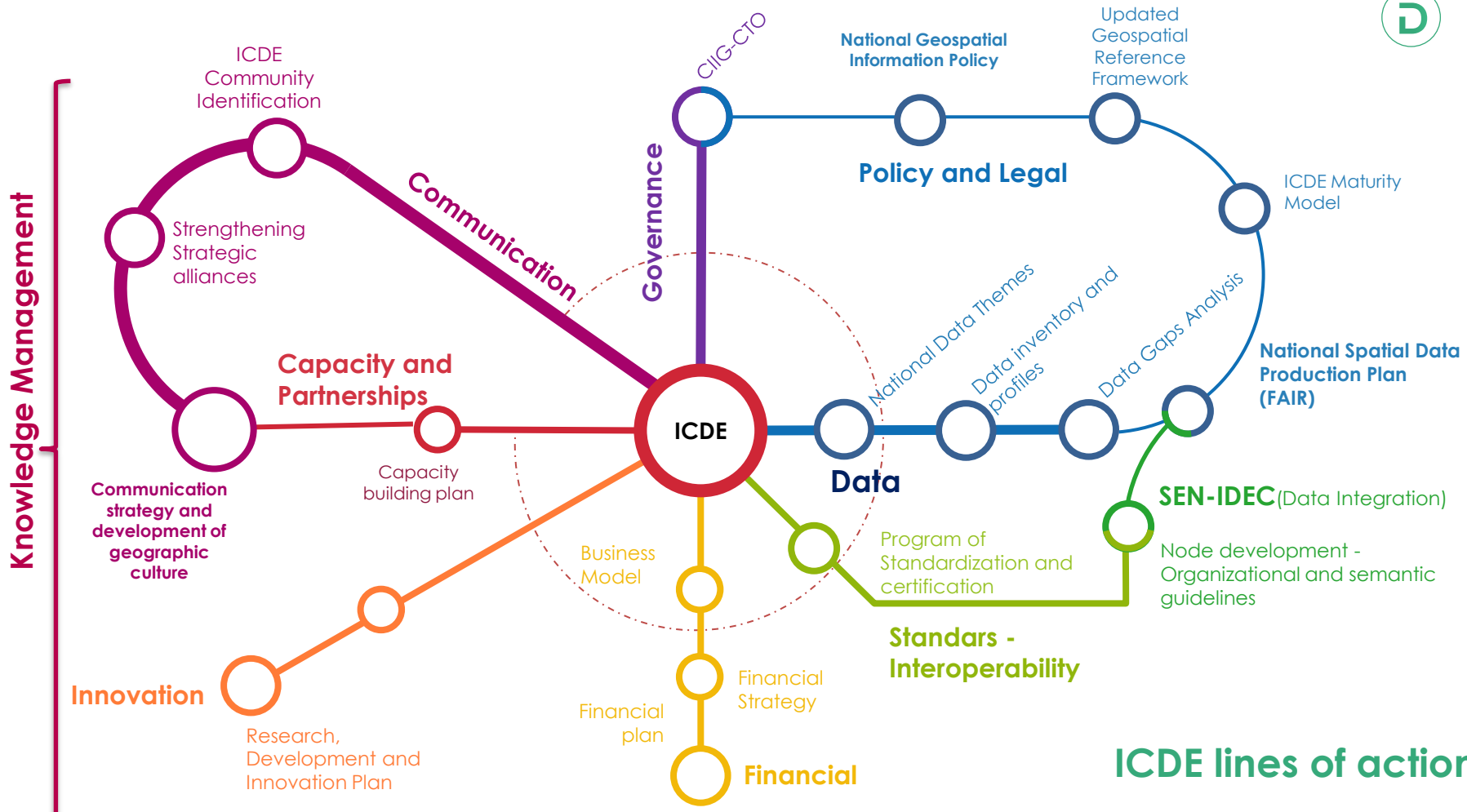
SWOT based on ECLAC Workshop, Regional Workshop and National Demand Survey.



4. ICDE Strategic Framework

Action Plan 2024- 2027





ICDE lines of action



Pathway Governance and Institutions



60%

Design and structure of the governance model

Establishment of the Interinstitutional Governance Model for the ICDE

40%

Value Proposition

Alignment of PEIGN Projects with the Objectives of the **National Development Plan** and Their Areas of Application

20%

Institutional arrangements

Information Management Procedure for **Determinants of Territorial Planning**

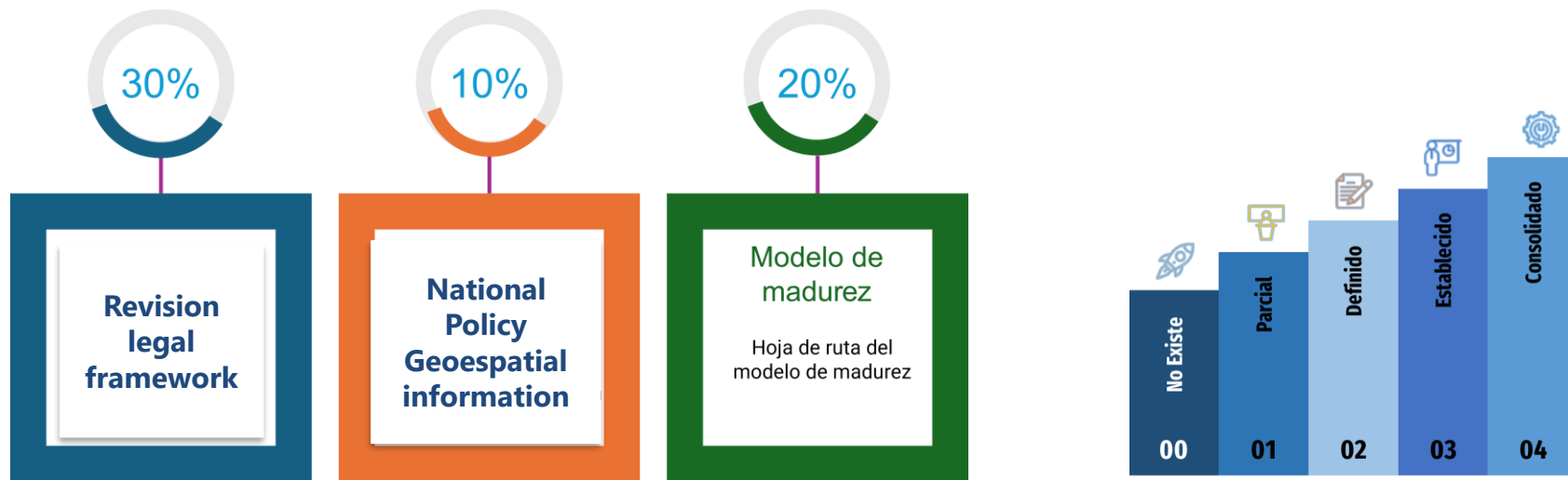


Challenges and Opportunities:

To effectively fulfill its strategic role as the national administrator of geospatial data, it is recommended to **elevate the organizational level of the ICDE** within IGAC, ensuring it has a visible position and the authority to coordinate both institutional and inter-institutional efforts.



Strategic Pathway 2: Policies and Legislation



Inclusion of Article 17 – Law No. 447 of 2024
Role of the ICDE and the PEIGN

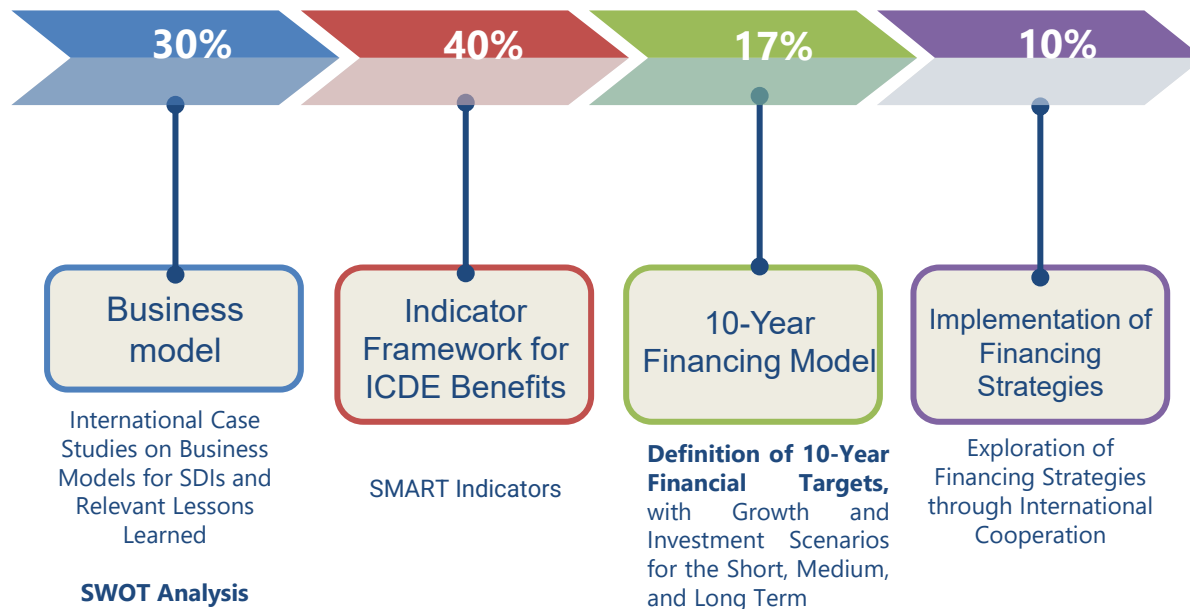


Challenges and Opportunities:

It is necessary to ensure a stronger and more binding legal framework for the ICDE, which currently operates under a resolution. In this regard, if the Data Law currently under discussion in Congress is approved, the next step would be the issuance of a regulatory decree.



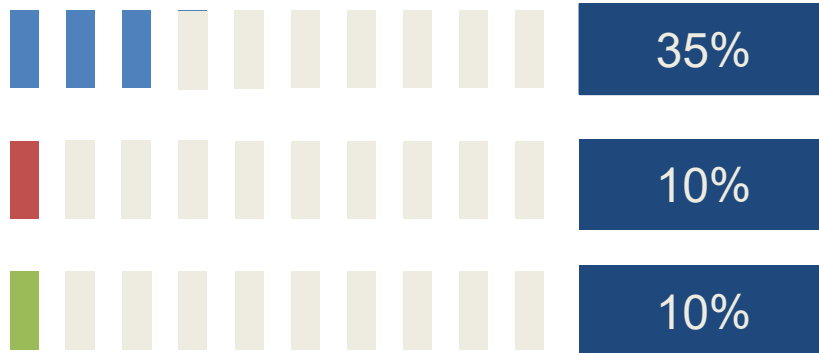
Strategic Pathway 3: Financial



Challenges and Opportunities: Ensuring the financial sustainability of the ICDE is a priority. This requires the definition of a structural and long-term funding strategy that enables the consolidation of its technical, operational, and technological capacities



Strategic Pathway 4: Data



Fundamental Data and Territorial Objects Production Plan

- Updating and **adaptation of fundamental geospatial themes**, accompanied by an information gap analysis focused on increasing **geographic granularity, improving data timeliness, and strengthening access mechanisms**.



Strategy for the Use, Sharing, and Utilization of Data

- 102 technical roundtables with 15 entities for the identification of open data and standards
ICDE Portal publication: 5,291 open data sets
4 interoperable legal territorial objects

Evaluation, Design, and Implementation of Geospatial Architecture

- Entity Characterization Artifact
- Geospatial Data Component Characterization Artifact



Challenges and Opportunities: It is essential to harmonize concepts across information coordination bodies by synthesizing definitions and promoting the integration of a geographic component into all official data, given its strategic value for territorial decision-making.



Strategic Pathway 5: Innovation



27%



**Definition of the Components
of the Geospatial Digital
Ecosystem**

Análisis de referencias
internacionales y propuesta
de componentes

10%



**Research, Development,
and Innovation Plan
(R&D&I)**

Interoperability and
Analytics for the
Geospatial Digital
Ecosystem

0%



**Agreements for the
Implementation of ICDE
Innovation Projects**

0%



**Public Innovation and
GovTech Lab**



Strategic Pathway 6: Standards



37%

GEO Interoperability Framework

Guidelines and Protocols for Geospatial Data Interoperability

70%

Analysis of the State of the Art of Geographic Information Standards at the National and International Levels

Recommendations and Best Practices on Standards and Quality of Geographic Information and Services



35%

Consolidation of a Community of Practice

Definition of the Standards Community of Practice

27%

Plan for the Standardization and Certification of Geospatial Information

- **Star Rating Scheme** to Standardize the Evaluation of Geoservice Quality Identification of ISO Standards to Support the Plan



Strategic Pathway 7: Partnerships



15%

Coordination with the
National Statistical System

- Geospatial Data for the Production of Statistics
- Georeferenced Statistics for the ICDE

25%

Community Engagement
Strategy

Progress on the Development of
Mechanisms to Foster Active Participation
by Communities



10%

Strategy for Coordination with
International Cooperation
Projects and Initiatives

Identification of Projects and Initiatives of
National Interest



Challenges and Opportunities: It is essential to establish, regulate, and implement multilevel mechanisms for the availability and effective use of territorial information.



Strategic Pathway 8: Capacity and Education



35%

National ICDE Training Plan

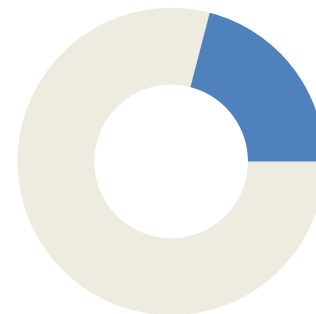
- Virtual course offerings on the ICDE Campus
- New content: Interoperability and the LADM-COL Model



40%

Strengthening of the Current Platform

- Architecture Enhancing the Portal for
- Improvements to the Structure and Functionality of the ICDE Portal



20%

Educational Programs on SDIs

Multilevel strengthening is needed to support the use of geospatial information

Strategic Pathway 10: Communication

Stakeholder Characterization

Update and systematization of ICDE actors



Use and Engagement Plan

Publication of the fourth edition of the Geodata Journal



Stakeholder Participation Strategy

Participation in key events: COP 16, UN World Data Forum, Geomatics Week 2024



Remarks



Colombia's experience shows that the IGIF is not just a technical framework, but a strategic tool to foster institutional coordination, strengthen capacities, and build a more interoperable, inclusive, and sustainable geospatial information ecosystem.

Regional collaboration is essential: by sharing lessons learned, adapting best practices, and building joint capacities, we can strengthen national initiatives and accelerate the effective implementation of the IGIF across all regions.





DANE

Thank you

slmorenom@dane.gov.co

2025



/DANEColombia



@DANEColombia



@DANEColombia



@DANEColombia



DANE_Colombia