

# Framework for Effective Land Administration (FELA)

## Unlocking FELA

A global dialogue on land administration

17<sup>th</sup> July 2025, Online

Presentation is based on documents and presentations from UN-GGIM and EuroSDR

<https://ggim.un.org>; <http://www.eurosd.net>



Presented by: Eva-Maria Morscher-Unger, Kadaster, the Netherlands



The Committee of Experts transmitted to ECOSOC its report, pursuant to resolution [E/RES/2016/27](#) entitled 'Enhancing global geospatial information management' ([E/2022/68](#)) in June 2022. The comprehensive report described the process of 'transition' marking the Committee's work, starting with an initial five-year period (2011 – 2016) on **initiated/establishment**; the report then detailed its second five-year period (2017-2021) on **institutionalization**; and then considers the Committee's future in the coming five-year period – **on implementation of the Committee's frameworks, anchored by the UN-IGIF**.



Source: [https://ggim.un.org/meetings/2025/Maputo/documents/I-1.1\\_UN-GGIM\\_Mandates.pdf](https://ggim.un.org/meetings/2025/Maputo/documents/I-1.1_UN-GGIM_Mandates.pdf) by Guillaume Le Sourd



The Committee of Experts transmitted to ECOSOC its report, pursuant to resolution E/RES/2016/27 entitled 'Enhancing global geospatial information management' (E/2022/68) in June 2022. The comprehensive report described the process of 'transition' marking the Committee's work, starting with an initial five-year period (2011 – 2016) on **initiated/establishment**; the report then detailed its second five-year period (2017-2021) on **institutionalization**; and then considers the Committee's future in the coming five-year period – **on implementation of the Committee's frameworks, anchored by the UN-IGIF.**

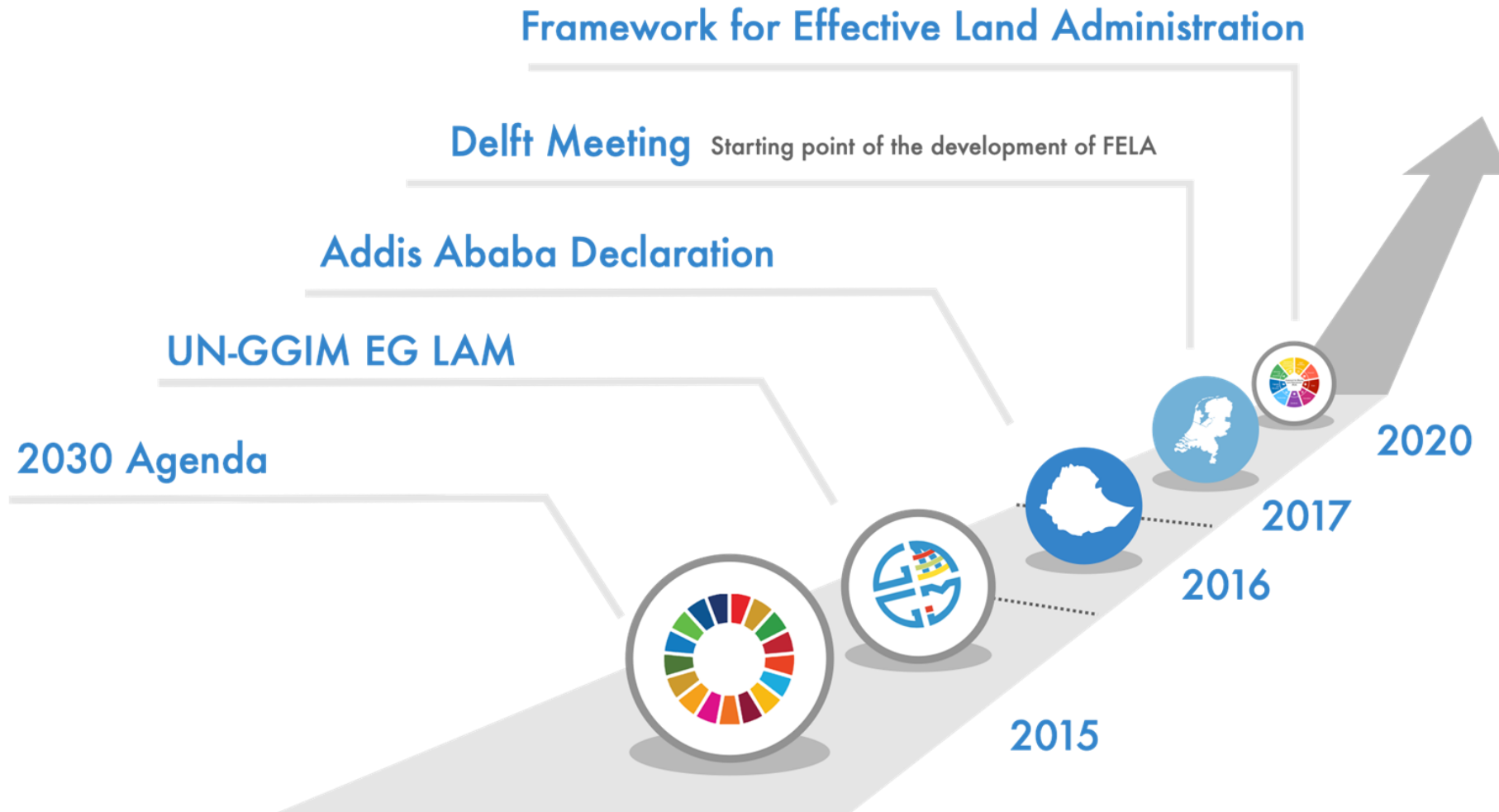


Source: [https://ggim.un.org/meetings/2025/Maputo/documents/I-1.1\\_UN-GGIM\\_Mandates.pdf](https://ggim.un.org/meetings/2025/Maputo/documents/I-1.1_UN-GGIM_Mandates.pdf) by Guillaume Le Sourd



# The Framework for Effective Land Administration

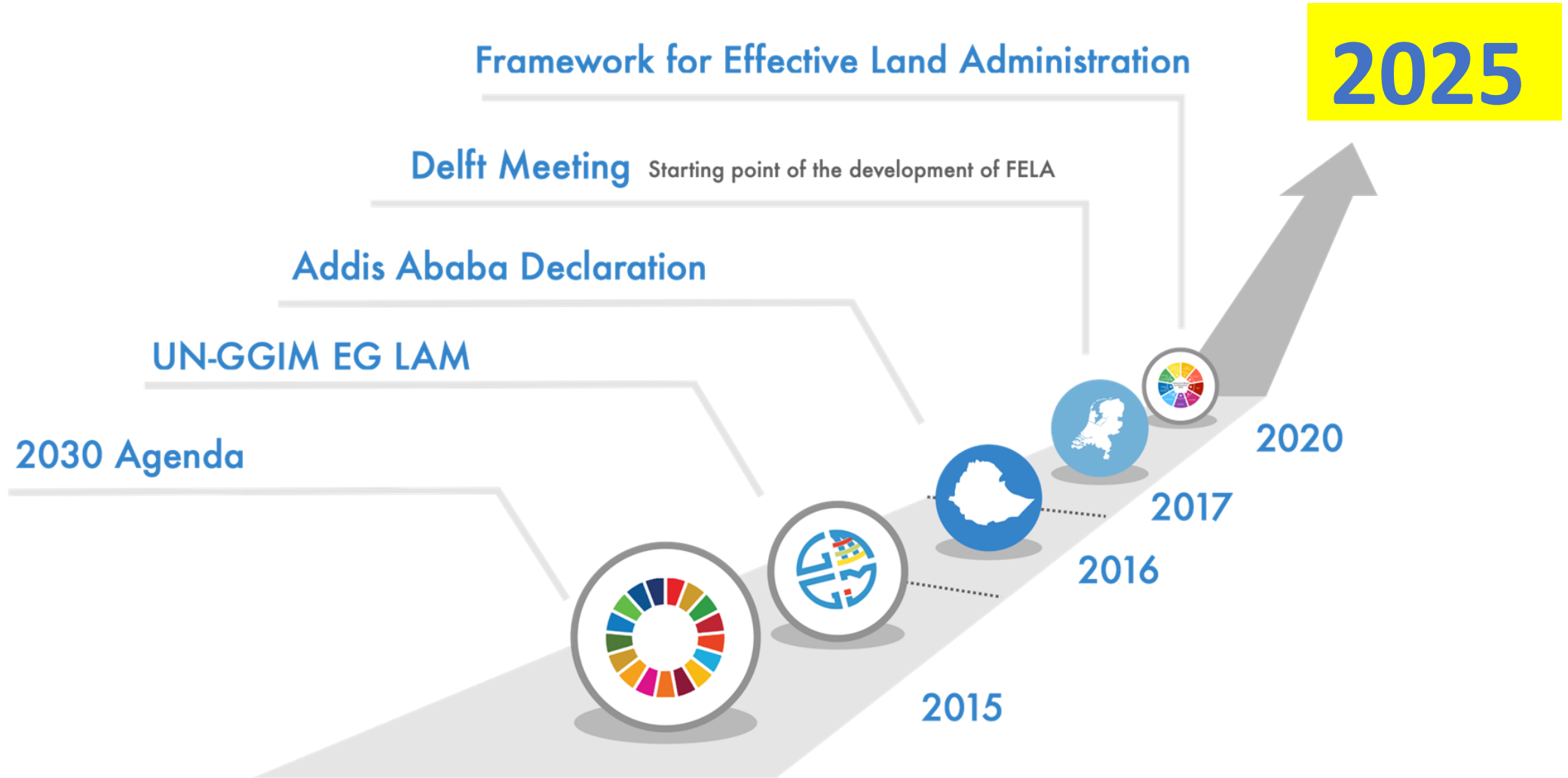
Sustainable development demands effective land administration





# The Framework for Effective Land Administration

Sustainable development demands effective land administration







# The Framework for Effective Land Administration

Sustainable development demands effective land administration

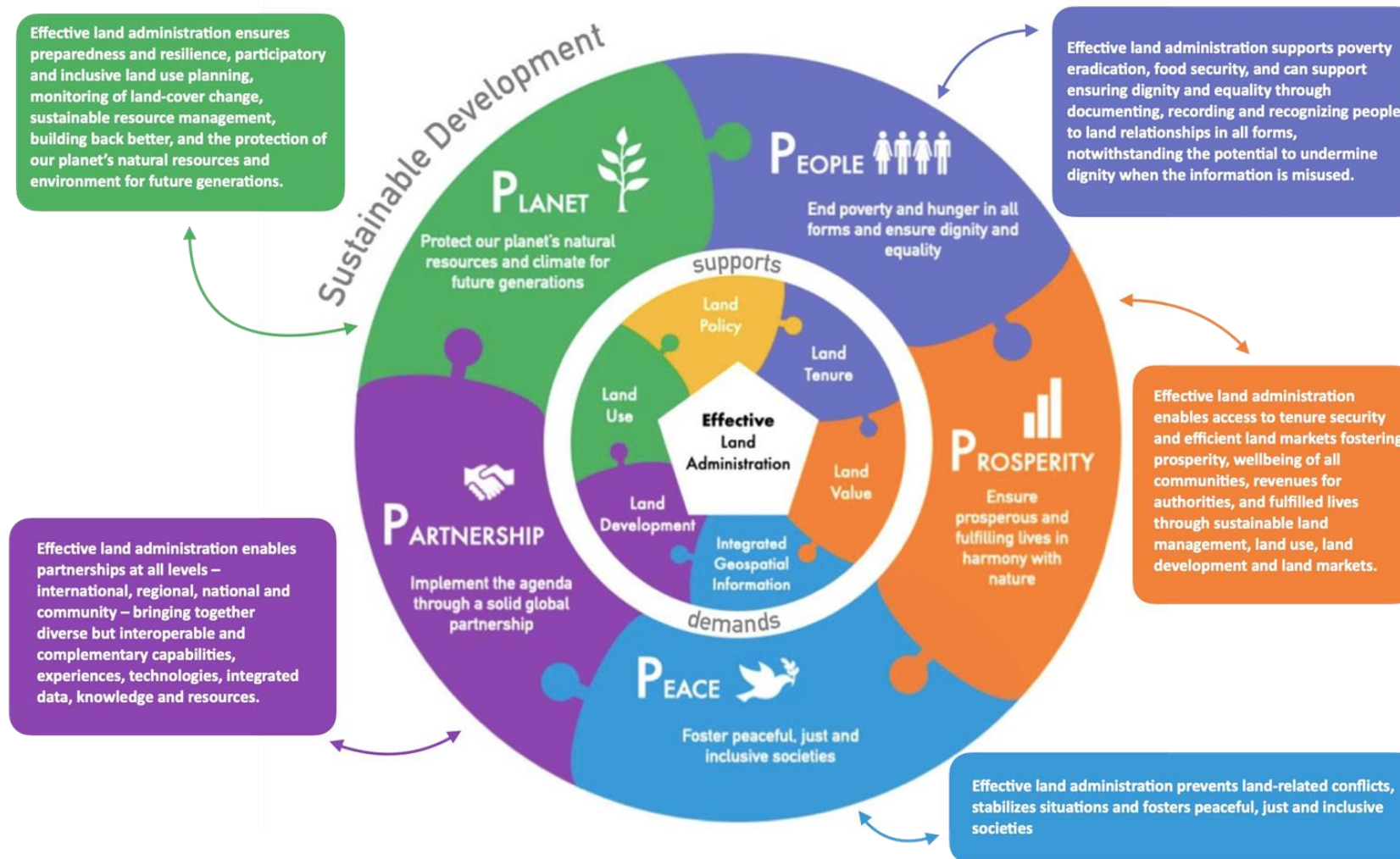


Figure: FELA in relation to the 5Ps, adapted from (UN-GGIM, 2020) by Unger, E.M.



# The Framework for Effective Land Administration

Sustainable development demands effective land administration

## Where are we now – regarding FELA and the 5Ps of the 2030 Agenda



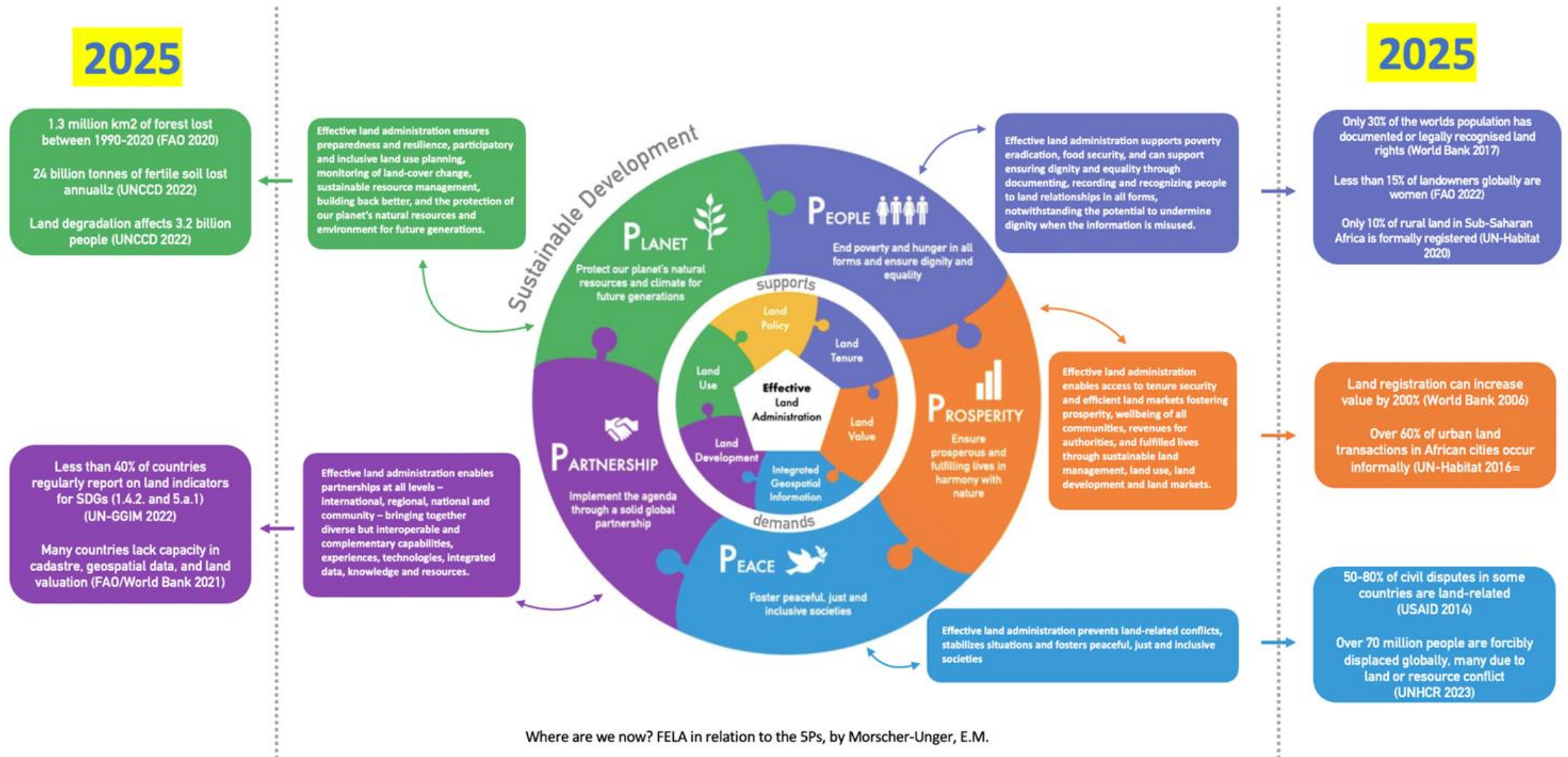
Figure: FELA in relation to the 5Ps, adapted from (UN-GGIM, 2020) by Unger, E.M.





# The Framework for Effective Land Administration

Sustainable development demands effective land administration







# The Framework for Effective Land Administration

## Sustainable development demands effective land administration

Effective land administration caters to all people, and must:

- 💡 Develop confidence and trust, promote security, safety, peace and peace building;
- 💡 Accelerate the proportion of population with tenure security;
- 💡 Allow economic development by supporting land value capture revenue systems that are equitable and transparent;
- 💡 Strengthen multi-disciplinary and multi-sectoral participation to achieve integrated geospatial information;
- 💡 Contribute to smart and resilient rural and urban societies, with equitable spatial/land use planning, and land development;
- 💡 Ensure participatory and inclusive land use, and land use planning;
- 💡 Promote the recognition of the inherent rights of indigenous and vulnerable peoples to their lands, territories and resources, and recognise collective traditions, customs and customary tenures, consistent with existing obligations under national and international law;
- 💡 Encourage efficient, sustainable and fair land markets, where appropriate, that take into account land tenure, value, use and land development aspects;
- 💡 Cater to all circumstances, situations and people – in times of peace and prosperity, in times of stress and hardship (including disaster and conflicts, forced migration and human displacement, poverty, food and water scarcity);
- 💡 Enable partnership, bringing and building together knowledge, skills and experiences on land tenure, land value, land use and land development; and
- 💡 Promote preparedness and resilience on climate change issues and support biodiversity, conservation and ecosystem sustainability.

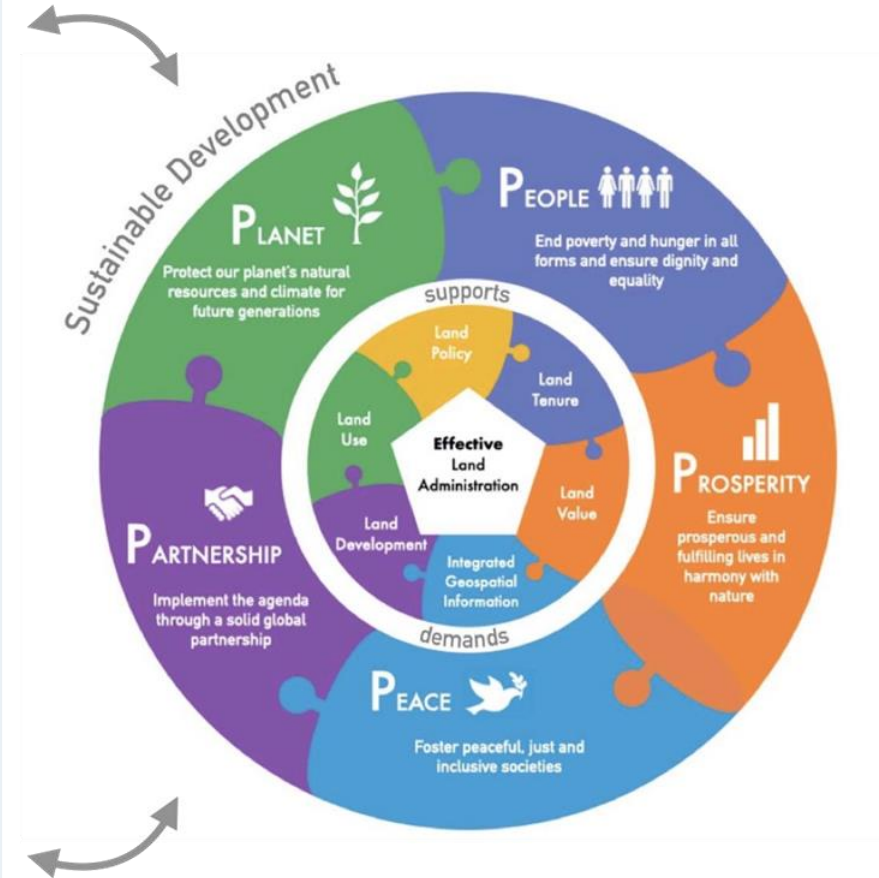
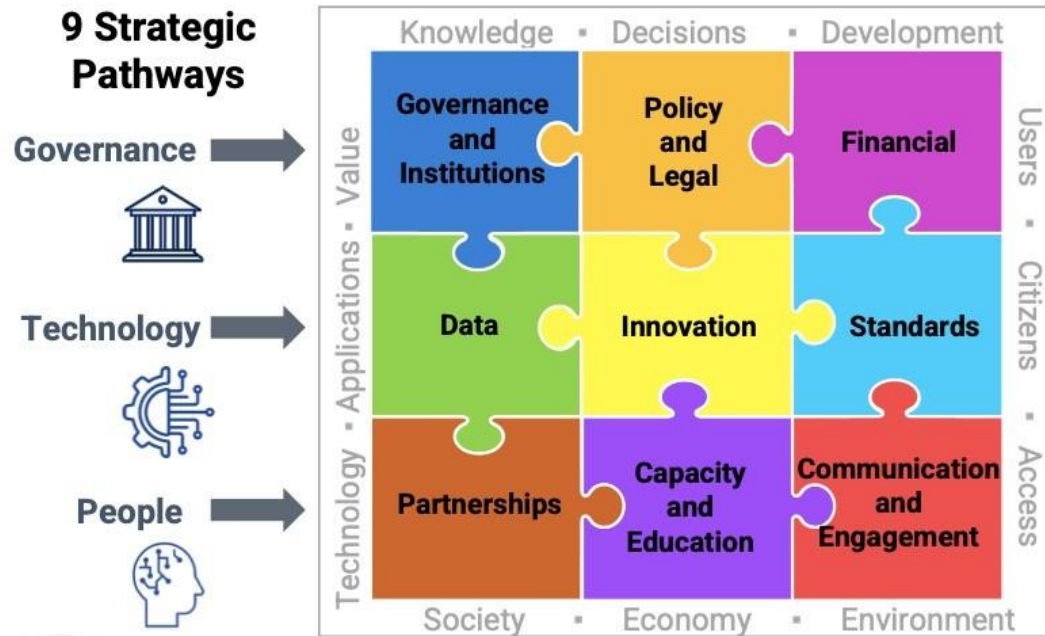


Figure: Effective Land Administration, adapted from (UN-GGIM, 2020) by Unger, E.M.

# Integrated Geospatial Information Framework



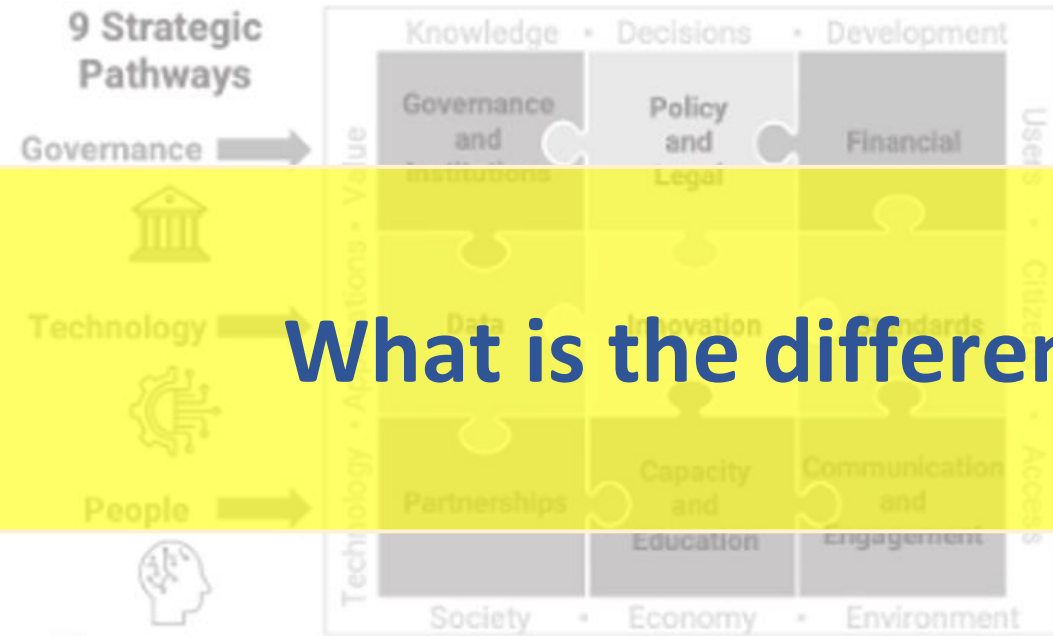
- Overarching Framework adopted at **8<sup>th</sup> Session (2018)**
- Implementation Guide 2020 adopted at 10<sup>th</sup> Session
- 9 Strategic Pathways
- 36 Key Elements
- [IGIF](#)

# Framework for Effective Land Administration



- Adopted at **10<sup>th</sup> Session (2020)**
- No Implementation Guide
- 9 Pathways - FELA is fully aligned with the IGIF\*
- \*I: Accountability; IX: Advocacy and Awareness
- **FELA implements the IGIF for the land sector**
- [FELA](#)

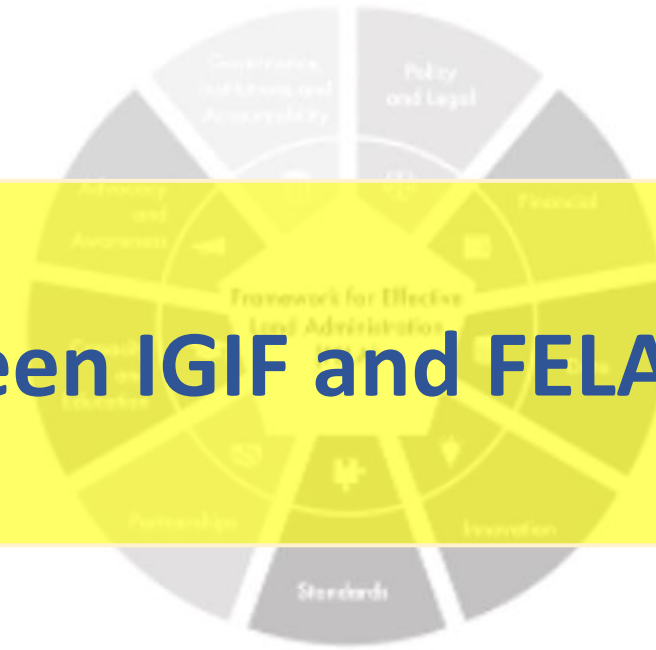
## Integrated Geospatial Information Framework



# What is the difference between IGIF and FELA?

- Overarching Framework adopted at 8<sup>th</sup> Session (2018)
- Implementation Guide 2020 adopted at 10<sup>th</sup> Session
- 9 Strategic Pathways
- 36 Key Elements
- IGIF

## Framework for Effective Land Administration

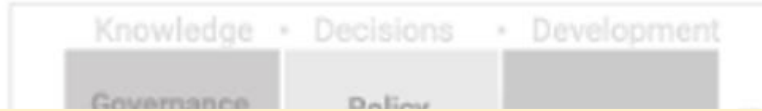


- Adopted at 10<sup>th</sup> Session (2020)
- No Implementation Guide
- 9 Pathways - FELA is fully aligned with the IGIF\*
- \*I: Accountability; IX: Advocacy and Awareness
- FELA implements the IGIF for the land sector
- FELA



## Integrated Geospatial Information Framework

### 9 Strategic Pathways



## Framework for Effective Land Administration



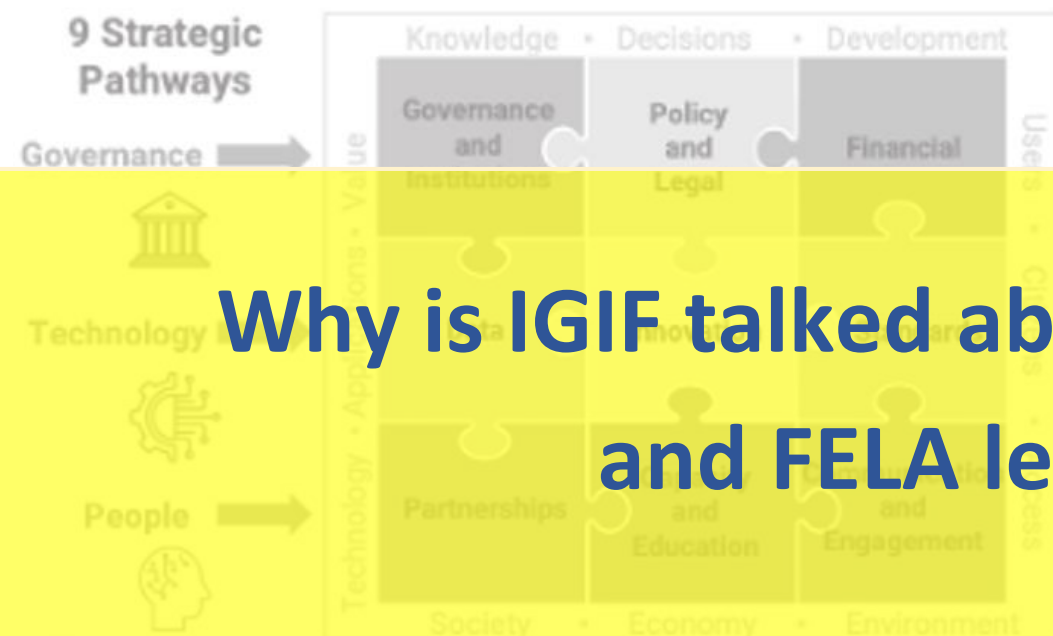
IGIF is an umbrella framework and when you work with the IGIF and entering the domain of land administration you can work with the FELA because it is all part of the puzzle.

When implementing the IGIF at the country-level FELA is preferred when we have to address land and property rights, as FELA references land related guidelines/publications and standards.

- Overarching Framework
- Implementation Guide 2020 adopted at 10<sup>th</sup> Session
- 9 Strategic Pathways
- 36 Key Elements
- IGIF

- No Implementation Guide
- 9 Pathways - FELA is fully aligned with the IGIF\*
- \*I: Accountability; IX: Advocacy and Awareness
- FELA implements the IGIF for the land sector
- FELA

## Integrated Geospatial Information Framework



**Why is IGIF talked about/applied/promoted often and FELA less mentioned?**

- Overarching Framework adopted at 8<sup>th</sup> Session (2018)
- Implementation Guide 2020 adopted at 10<sup>th</sup> Session
- 9 Strategic Pathways
- 36 Key Elements
- IGIF

## Framework for Effective Land Administration



- Adopted at 10<sup>th</sup> Session (2020)
- No Implementation Guide
- 9 Pathways - FELA is fully aligned with the IGIF\*
- \*I: Accountability; IX: Advocacy and Awareness
- FELA implements the IGIF for the land sector
- FELA

## Integrated Geospatial Information Framework



**How can FELA be further leveraged to address today's challenges?**

**How can it add value in today's geospatial and LA landscape?**

- Overarching Framework adopted at 8<sup>th</sup> Session (2018)
- Implementation Guide 2020 adopted at 10<sup>th</sup> Session
- 9 Strategic Pathways
- 36 Key Elements
- IGIF

## Framework for Effective Land Administration



- Adopted at 10<sup>th</sup> Session (2020)
- No Implementation Guide
- 9 Pathways - FELA is fully aligned with the IGIF\*  
\*I: Accountability; IX: Advocacy and Awareness
- FELA implements the IGIF for the land sector
- FELA





# The Framework for Effective Land Administration

Sustainable development demands effective land administration

## Current Gaps and Challenges of FELA

- Overlap with IGIF and lack of clear differentiation
- Limited awareness among stakeholders and practitioners – **what** can you actually do with it
- Absence of implementation tools and country level guidance – would that be needed or too much duplication of IGIF? – or better to ask what is missing in IGIF specifically for **Land**
- Insufficient alignment with donor strategies and funding priorities – though WB/FAO etc. were included
- Update needed? Tech, AI, map production, marine, space...

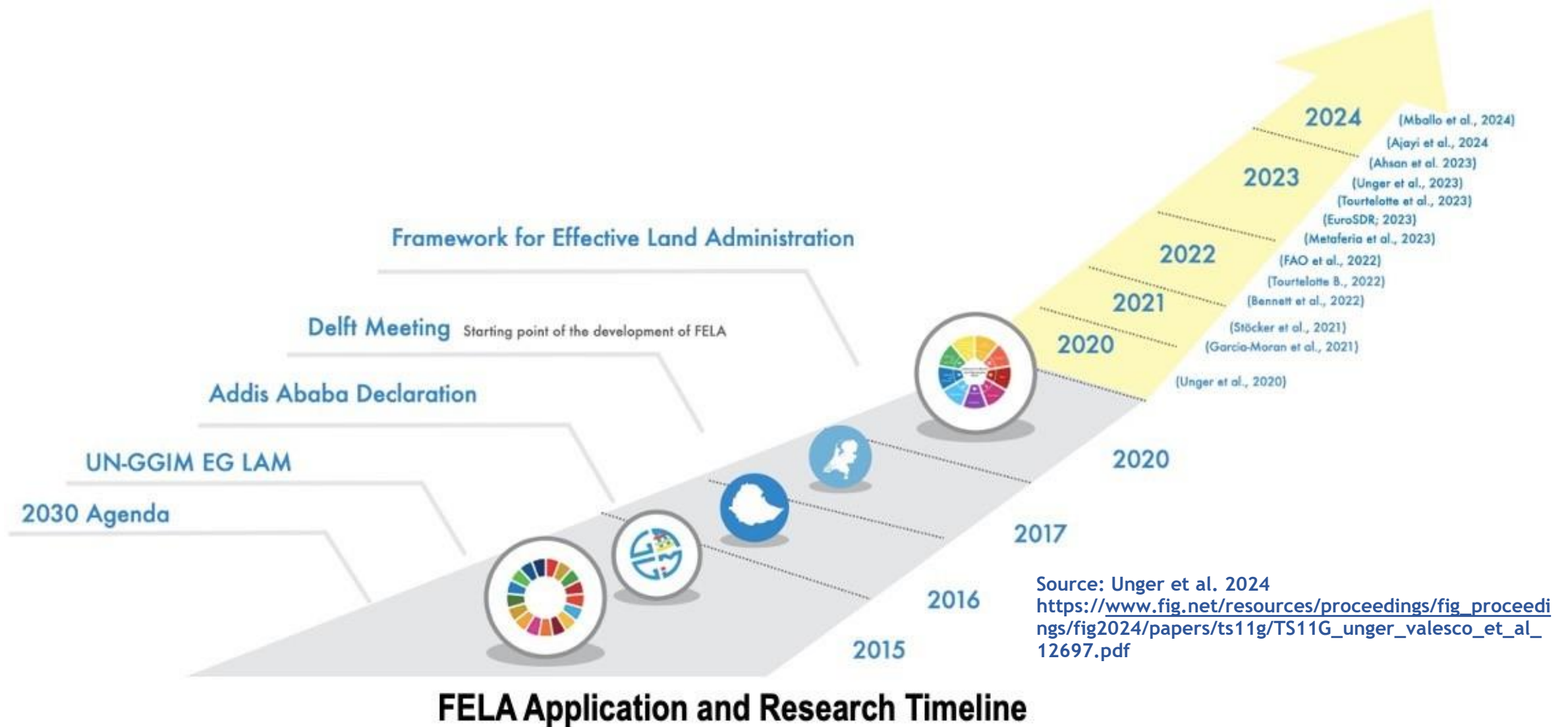
## Unique Value Proposition

- It is an adopted UN Framework
- FELA provides a policy level perspective on institutional coordination etc. Unlike more technical or thematic frameworks
- FELA focuses on institutional effectiveness and strategic alignment
- FELA promotes and links to other policies, guidelines etc.



# The Framework for Effective Land Administration

Sustainable development demands effective land administration



Source: Unger et al. 2024  
[https://www.fig.net/resources/proceedings/fig\\_proceedings/fig2024/papers/ts11g/TS11G\\_unger\\_valesco\\_et\\_al\\_12697.pdf](https://www.fig.net/resources/proceedings/fig_proceedings/fig2024/papers/ts11g/TS11G_unger_valesco_et_al_12697.pdf)

Articles and papers

Land Administration Domain  
Model (LADM)

Framework for Effective Land  
Administration (FELA)

concerning Cadaster and land administration.



# Framework for Effective Land Administration

Find articles, research papers and documents on the application of the Framework for Effective Land Administration (FELA). The United Nations uses the FELA as a policy guide for UN member states.

31 documents matched your search query.

## [Land 2024, 13, 528 - Navigating the Terrain of Digital Transition: Ghana's Journey of Developing a Digital Land Information System](#)

Author: Rosemond Owusu Ansah, Zaid Abubakari, Benjamin Quaye, Dimo Todorovski, Chipofya Malumbo, Christiaan Lemmen (2024)

## [Marco para la Administración Efectiva del Territorio Referencia para desarrollar, reformar, renovar, fortalecer, modernizar y monitorear la administración del territorio](#)

Author: UNGGIM (2020)

## [Leveraging FELA Sharing examples from the Netherlands](#)

Author: Paula Dijkstra (2022)



## UPDATE needed - Repository of FELA Application and Implementation

## Land Administration Domain Model (LADM)

## Framework for Effective Local Administration (FELA)

concerning Cadaster and land

[illegible]

## Leveraging FELA Sharing examples from the Netherlands

Author: Paula Dijkstra (2022)

Presented by: Eva-Maria Morscher-Unger, Kadaster, the Netherlands, Unlocking FELA Webinar, July 2025



# Implementing the Framework for Effective Land Administration

**EuroSDR with the support of UN-GGIM Europe and the UN-GGIM EG-LAM, initiated a small project in summer 2021 to raise awareness of the merits and benefits of effective land administration and to share knowledge and experience leveraging the FELA as overarching policy guidance**



- Joep Crompvoets, KU Leuven, Belgium
- Anka Lisec, University of Ljubljana, Slovenia
- Frédéric Cantat, IGN, France
- Eva-Maria Morscher- Unger, Kadaster, the Netherlands
- Rohan Bennett, Kadaster, the Netherlands



# Survey Results

## UN-GGIM FELA Pathways on Data, Innovation and Standards



### Introduction

This infographic presents key insights from the EuroSDR Survey of the UN-GGIM FELA Pathways on Partnerships, Capacity and Education, and Advocacy and Awareness in land administration. Explore how organisations manage essential land data, drive innovation, and adopt international standards to enhance interoperability and integration.

### Participation

In this EuroSDR initiative X 32 organisations from 22 European countries participated.



### Quick Facts

85% of organisations manage parcel data  
78% continuously monitor data security





# Survey Results

## UN-GGIM FELA Pathways on Data, Innovation and Standards

### UN-GGIM FELA Pathway: Data

#### Land Data Themes Coverage

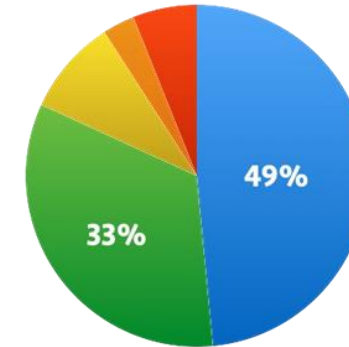


**Parcels** **Buildings** **Addresses** **Land Use** **Others..**

"Parcels" is the most prominent theme at 84.85%, with high percentage themes like "Buildings" and "Addresses" also being essential. In contrast, lower-percentage themes, such as "Land Use" at different levels at 21.21% are less commonly managed. The "Others" category (24.24%) includes niche data such as cable and pipelines etc.

#### Data Security Organised

**Organisational Level: 49%**  
**Country Level: 33%**  
**Partially Outsourced: 9%**  
**Outsourced: 3%**  
**Other: 6%**



Most organisations manage data security internally (49%), while 33% use centralised, country-level control. A small number outsource security fully (3%) or partially (9%).

### UN-GGIM FELA Pathway: Innovation

#### Sources of Innovation Process



**Government Requests: 45%**

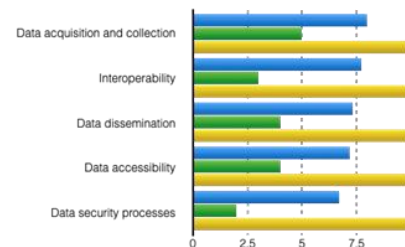


**Innovation Board: 36%**



**Citizen Requests: 30%**

#### Opportunities for Innovations



The participating organisations saw many opportunities for innovations, particularly in the domain of data acquisition and data collection processes and in the domains related to interoperability, but fewer opportunities are associated with data dissemination and security.

# Survey Results

## UN-GGIM FELA Pathways on Data, Innovation and Standards

### UN-GGIM FELA Pathway: Standards

#### Spectrum of engagement with standardisation



Suggesting ongoing global efforts to enhance data and technology standards are critical for efficient land administration and management. Room for some organisation to improve their coordination practiced to enhance overall standardisation processes in their specific country.

#### Participation in standardisation organisation



66.67%



63.64%



60.61%



9.09%

Others

21.21%

### Conformity with FELA Goals and Requirements



#### Data

**Goal** - Reliable data and service quality attained: **conform**  
**Requirement** - Data maintained, secure and not duplicated: **partial conform**



#### Innovation

**Goal** - Responsible and innovation-oriented: **partial conform**  
**Requirement** - Upgradable system and approaches: **partial conform**



#### Standards

**Goal** - Interoperability and integration supported: **partial conform**  
**Requirement** - Considers internationally agreed standards: **conform**

### Authors

Eva-Maria Morscher-Unger; Joep Cromptoets; Anka Lisec; Frederic Cantat; October 2024

kadaster





# Implementing the Framework for Effective Land Administration

## SIGFU and FELA's key strategic pathways

Assessment of current progress applied to Ivory Coast Urban Land Administration



### 1 Governance, Institutions and Accountability

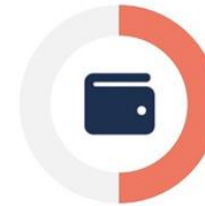
#### Facts

SIGFU Decree: implementation of institutional land administration policy through the implementation of SIGFU  
Project monitoring and audits by the Prime Minister's Office  
Potential reduction of corruption through full process automation and securing of land and spatial data



### 2 Law and Policy

New laws and regulations :  
Urban land code  
Massive titling reform  
Unique parcel identifier



### 3 Finance

Fivefold increase in direct revenue thanks to the implementation of new processes and LIS  
Strong investment in land administration technology infrastructure  
Affordable and accessible land services (portal and e-payment)



### 4 Data (and Processes)

Full up to date urban high resolution digital cartography  
Digitalization and integration of textual and spatial land information  
Data sharing with institutions and partner agencies



### 5 Innovation

Integration of state of the art geospatial data and processes  
High capacity digitalization processing chain integrated in the LIS  
New geodetic reference system integrated into ITRF  
Acquisition of high technology tools for survey, mapping and land processes



### 6 Standards

Various foundational standards established and applied :  
LADM  
IDUFCL (unique parcel identifier)  
Exchange of information between land administration institutions  
Precision classes for topographic surveys and geodetic operations  
New geodetic reference network



### 7 Partnerships

Joint actions between MCLU and finance ministers for the modernization of land administration processes  
Involvement of all relevant agencies for the establishment of norms and standards  
Participation of boards of surveyors, urbanists, notaries, banks



### 8 Capacity and Education

Group of 600 personnel from land administration entities trained on the principles and usage of the LIS  
Training of professionals on the use of new techniques and ability to benefit from the system  
Sustainability and retention of skilled personnel is still a challenge



### 9 Advocacy and Awareness

Many communication campaigns and awareness activities have been realized  
Internal communication still to improve  
Engagement and adoption of the new processes and system by the land administration personnel – work in progress

ign fi

Slide from: Making land information systems the cornerstone of FELA implementation in Africa by Aurélia Decherf & Jean-Philippe Lestang, IGN FI



# The Framework for Effective Land Administration

Sustainable development demands effective land administration

## Possible Impact of such initiatives/implementations

- Provide evidence-based insights to the GGIM CoE on emerging trends, successful practices and existing gaps in LA
- UN Member States initiate/guide future/update of FELA through request—statements to the EG-LAM during High Level Meetings
- WB/FAO/FIG/EuroSDR/Eurogeographics etc. to take a more prominent role (through the MS) to guide these developments?
- Generate actionable knowledge to support and influence the post 2030 Agenda
- ...





# The Framework for Effective Land Administration

Sustainable development demands effective land administration

## Practical recommendations from EuroSDR FELA Workshop in June 2025, Paris

### 1. EuroSDR Questionnaire

- Tailor questionnaires to different stakeholder groups (e.g. scientists, academics).
- Redefine questions if reused in different context/region– ensure clarity on what results are expected.

### 2. Engagement & Stakeholder Involvement

- Some stakeholders feel excluded: “This is not our document – nobody asked us.”
- Better representation of different languages and contexts - Important to speak the language of others

### 3. Capacity Building & Education

- FELA as a reference framework, not a tool – needs contextual adaptation.
- Initial result of FELA should be mutual understanding across countries.

### 4. Data for SDGs & Impact Analysis

- Use SDG time series data to track, Environmental impact, Financial impact, Dynamics and trends over time
- Need clear benchmarks and effective ways to present data

### 5. Working Group Results

- Collaborate with entities like FIG to expand the Cadastral Template with FELA.
- WPLA has past guidelines – leverage them by using FELA.

### 6. Strategic Alignment & Partnerships

- Several times suggestion to combine FELA with Cadastral Template, work with: FIG C7 WB (World Bank) and FAO
- FELA should be enhanced with country-specific examples -Consider FELA in post-2030 agenda.

### 7. Knowledge Dissemination & Communication

- FELA as a living document: Include recommendations or trends per pathway, Should be a digital living version.
- Submit FELA-related papers to OICRF repository

# Introduction to the UN-GGIM Framework for Effective Land Administration

## Unlocking FELA

A global dialogue on land administration

17th July 2023 Online  
**Thank You!!!**

any questions: [Eva-Maria.Unger@kadaster.nl](mailto:Eva-Maria.Unger@kadaster.nl)

Presentation is based on documents and presentations from UN-GGIM and  
EuroSDR <https://ggim.un.org>; <http://www.eurosdrr.net>

kadaster

Presented by: Eva-Maria Morscher-Unger, Kadaster, the Netherlands

