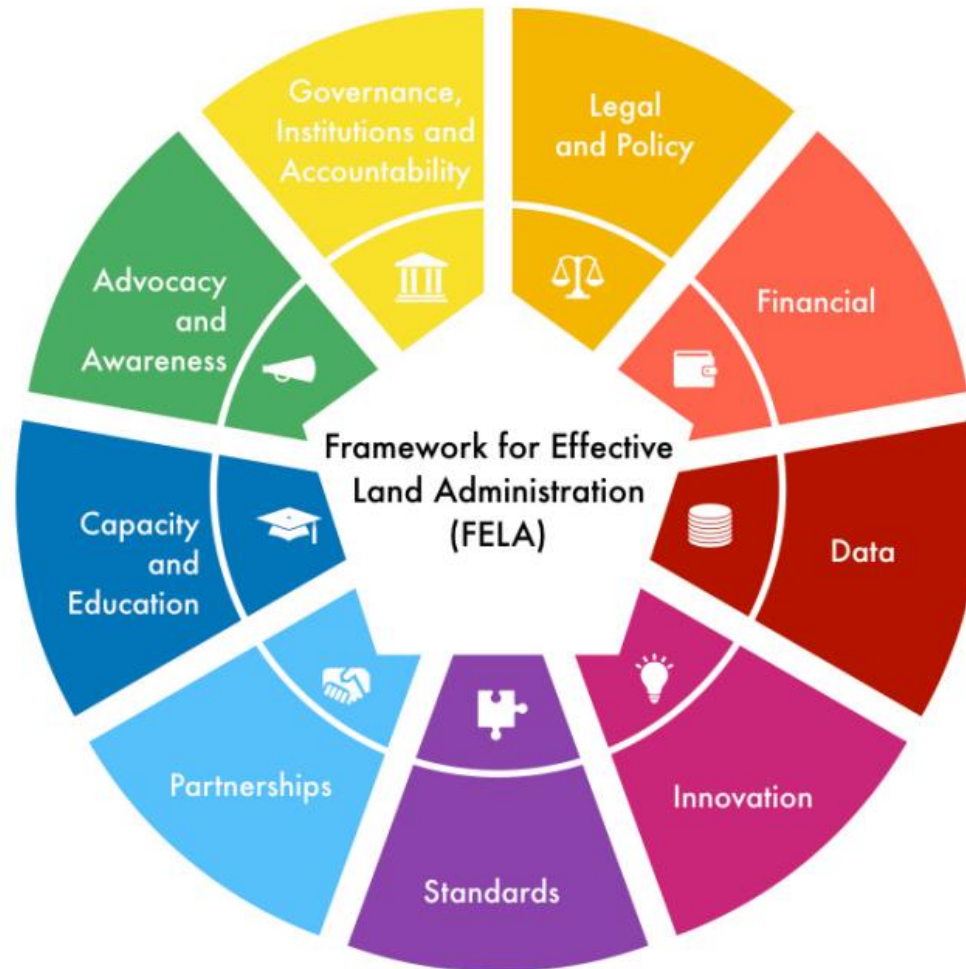


¿How can be FELA framework embraced from different entities for their own purposes?

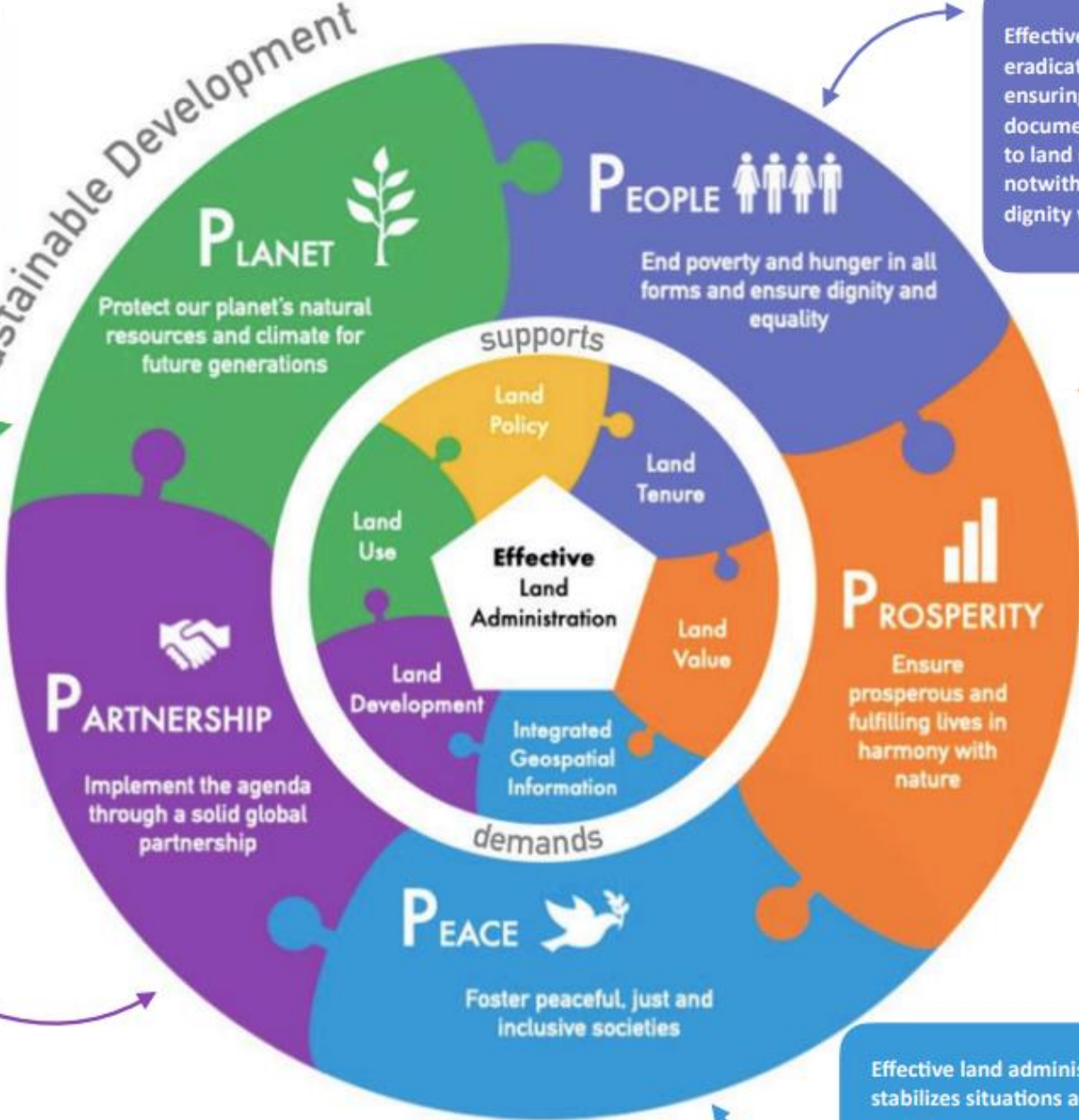
FELA with its nine pathways is an overarching policy guide and provides a reference for Member States when establishing, strengthening, co-ordinating, and monitoring its land administration nationally or sub-nationally.



FELA aligns directly to the overarching and strategic IGIF. FELA implements the IGIF for the land sector. All pathways are linked and overlap and address a specific objective.

Effective land administration ensures preparedness and resilience, participatory and inclusive land use planning, monitoring of land-cover change, sustainable resource management, building back better, and the protection of our planet's natural resources and environment for future generations.

Sustainable Development



Effective land administration supports poverty eradication, food security, and can support ensuring dignity and equality through documenting, recording and recognizing people to land relationships in all forms, notwithstanding the potential to undermine dignity when the information is misused.

Effective land administration enables access to tenure security and efficient land markets fostering prosperity, wellbeing of all communities, revenues for authorities, and fulfilled lives through sustainable land management, land use, land development and land markets.

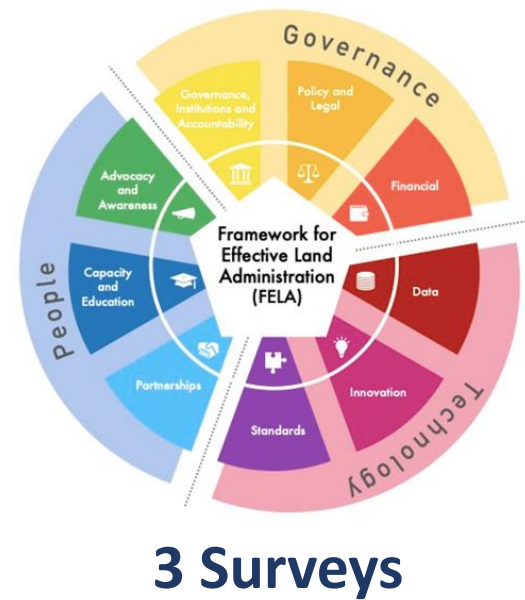
Effective land administration enables partnerships at all levels – international, regional, national and community – bringing together diverse but interoperable and complementary capabilities, experiences, technologies, integrated data, knowledge and resources.

Effective land administration prevents land-related conflicts, stabilizes situations and fosters peaceful, just and inclusive societies



Academia Experts in Europe Working in the advancement of FELA Framework

UN-IGIF Element on Data	FELA redefinition on Data	Questions should be focused on:	Construction of the Survey with the objective of Identifying Trends
<ul style="list-style-type: none"> • Data themes, • Custodianship, Acquisition and management • Data curation and delivery • Data supply chains 	<ul style="list-style-type: none"> • <i>FELA goal on data – Reliable data and service quality attained</i> • <i>FELA requirement on data – Data maintained, secure and not duplicated</i> 	<ul style="list-style-type: none"> • Reliable data • Services • Data Maintenance • Data Security • Data Duplication 	<ul style="list-style-type: none"> • Is there an operational infrastructure and geoportal in your country that facilitates advanced sharing, viewing, accessing and using of land information? • Does government actively support upgrades and innovations in the land administration system? • ...



Next Steps for the New WG LAM UN-GGIM Americas

- Take 3 surveys prepared by academia in Europe and adapt them to regional context of the Americas.
- Have a feedback meeting with academic experts of EuroSDR, EuroGeographics, FIG7 Commission.
- Apply Survey to the Americas.