



# Geospatial Census and Population Data

---

August 1, 2022, New York

Rachel Snow

Population and Development Branch  
Technical Division, UNFPA

The Twelfth Session of UN-GGIM

Side Event of the UN Geospatial Network on  
the One UN Geospatial Situation Room

# UNFPA GIS Solutions

## Challenges:

- Lack of high quality georeferenced population data
- Insufficient use of georeference census data for development
- Lack of publicly accessible georeference population data
- Limited GIS capacity

## GIS Solutions:

- Modernization of census
- Enhancing integration of population with other geospatial data
- UNFPA PDP for publicly accessible georeference population data
- GIS capacity development

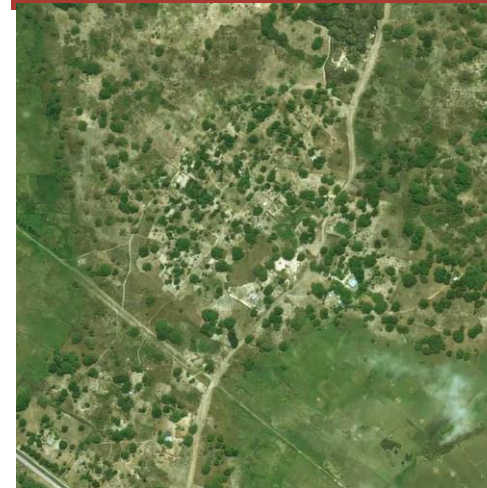
# Geospatial Solution for the 2020 Census Round

Increased use of handheld devices

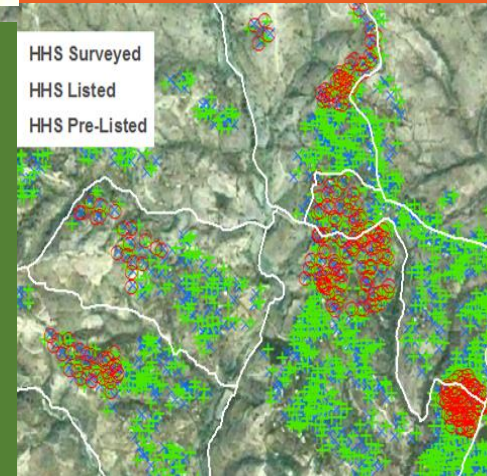


Digital cartography & use of satellite imagery

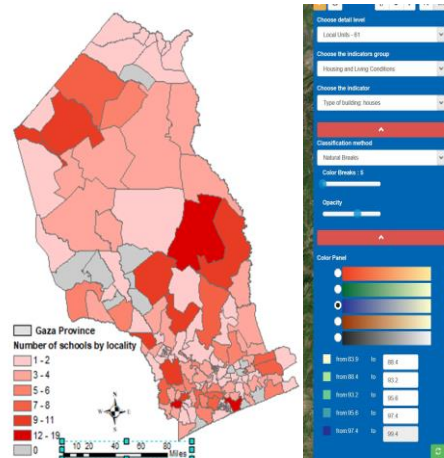
Addressing emerging capacity needs- New technologies, Innovations, & Expertise



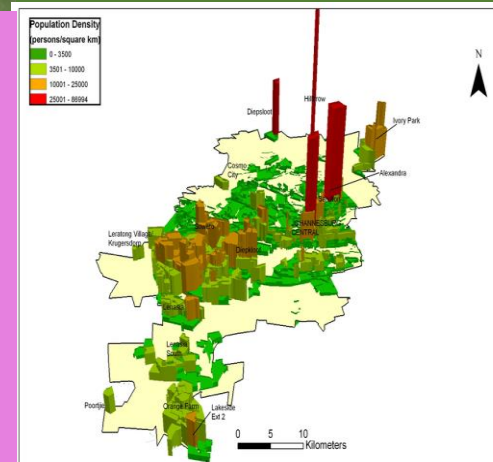
Using GIS to improve census quality (HH & EA)



Capacity to use GIS in census, analysis & dissemination



Wider use of census data

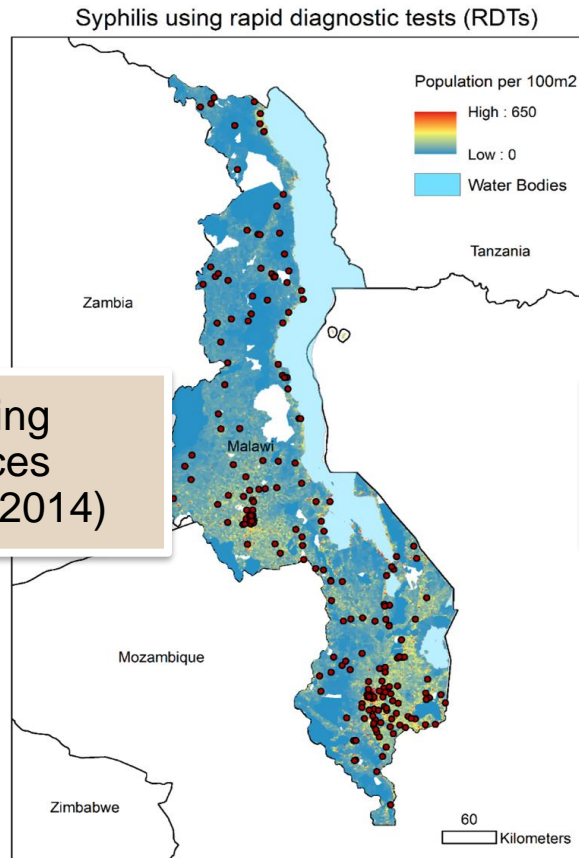


High-resolution modelled population estimates, where enumeration is not possible

# Geospatial Solution in Analytical Research for LNOB

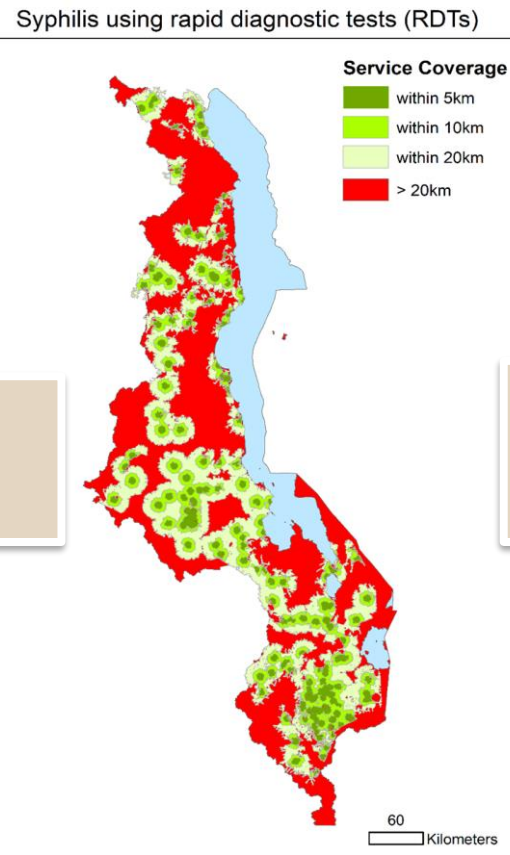
## e.g. mapping Population Access to Antenatal Care Services

### [1] Mapping Antenatal Service Locations



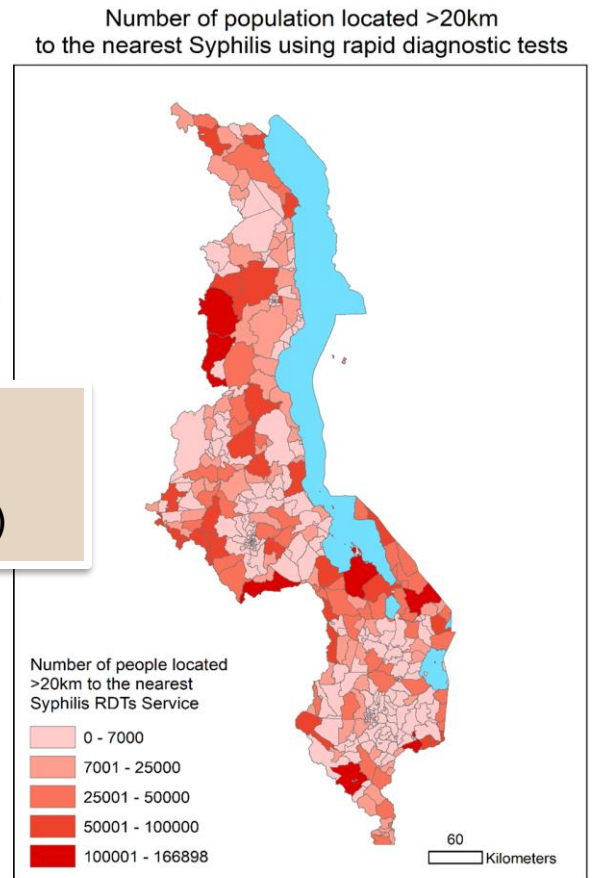
Mapping Services (SPA 2014)

### [2] Mapping Antenatal Service Coverage



Integrate Road Network (OSM)

### [3] Mapping Population Access



Integrate Population (Census 2018)

# Geospatial Solution: UNFPA Population Data Portal



Household Surveys



National surveys



Sample Census

Full count Census

National  
Statistics  
Authorities

Harmonization  
SDMX

200+ Indicators  
Population  
SRH  
Gender



Global datasets

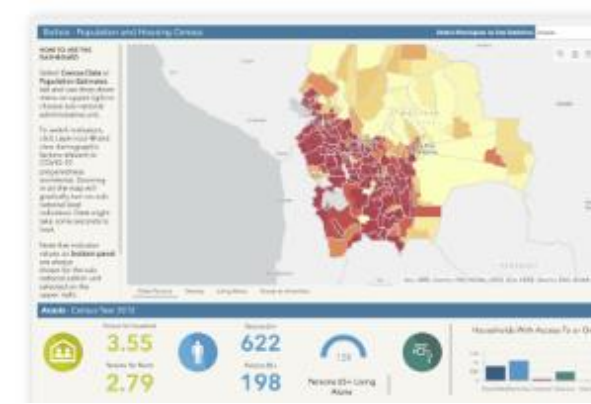
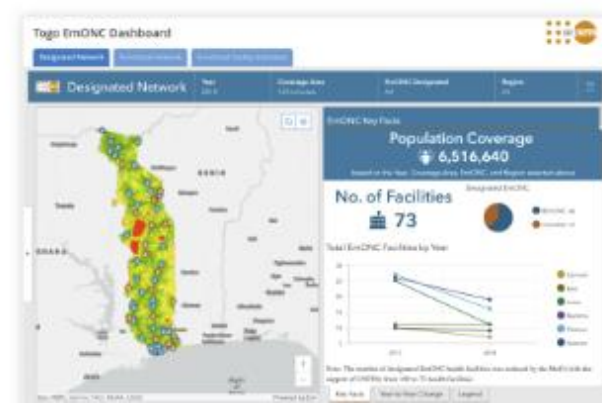
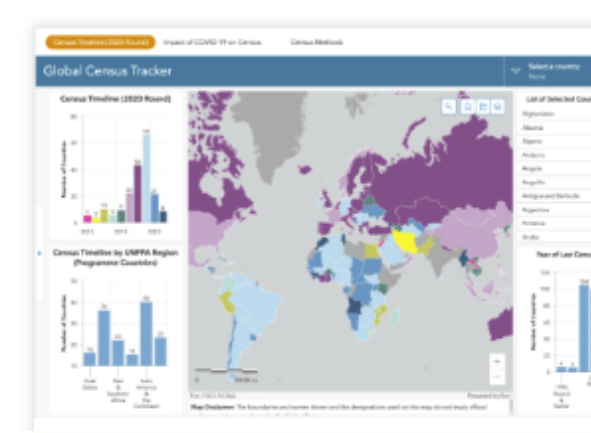
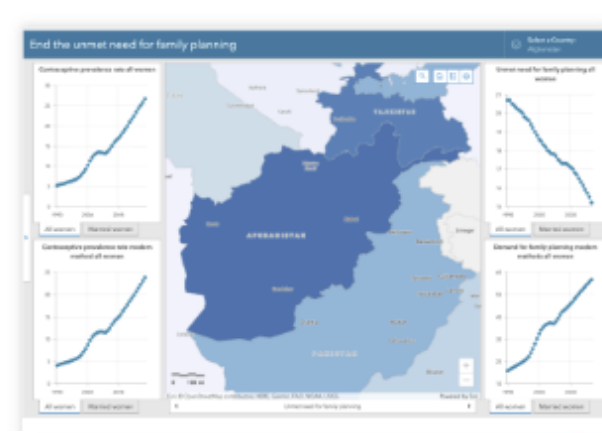
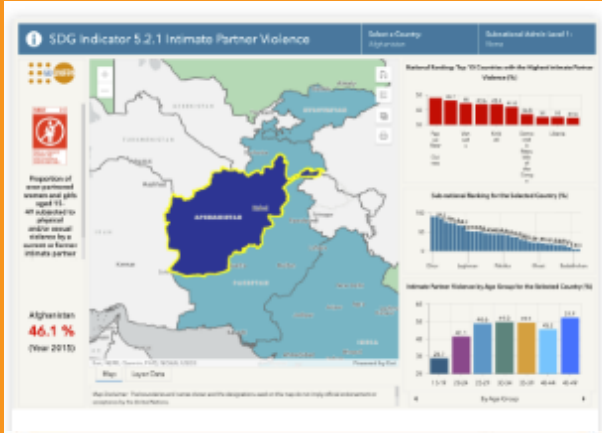
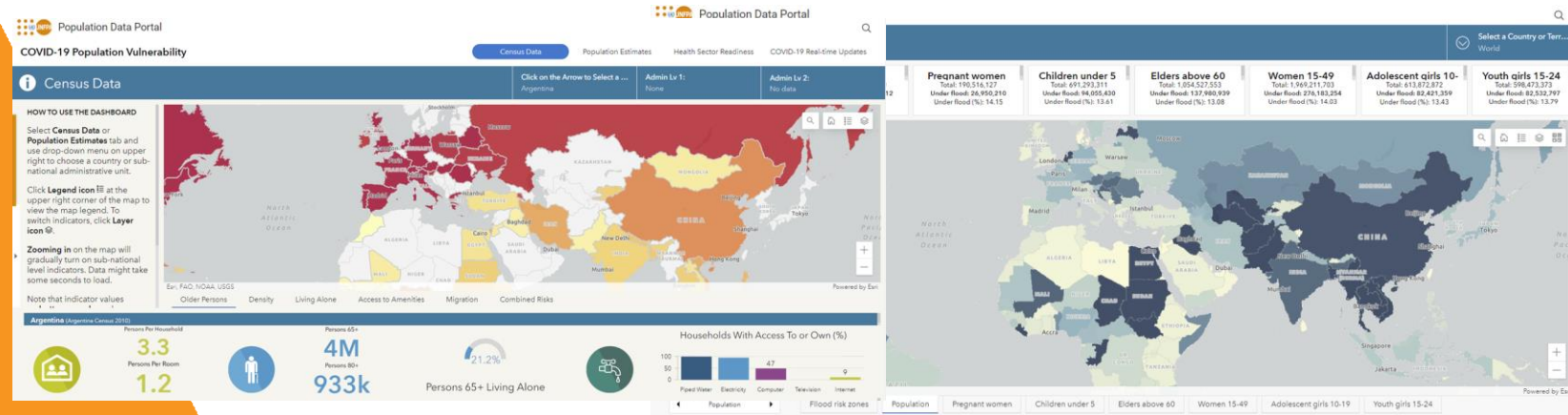


Geospatial data



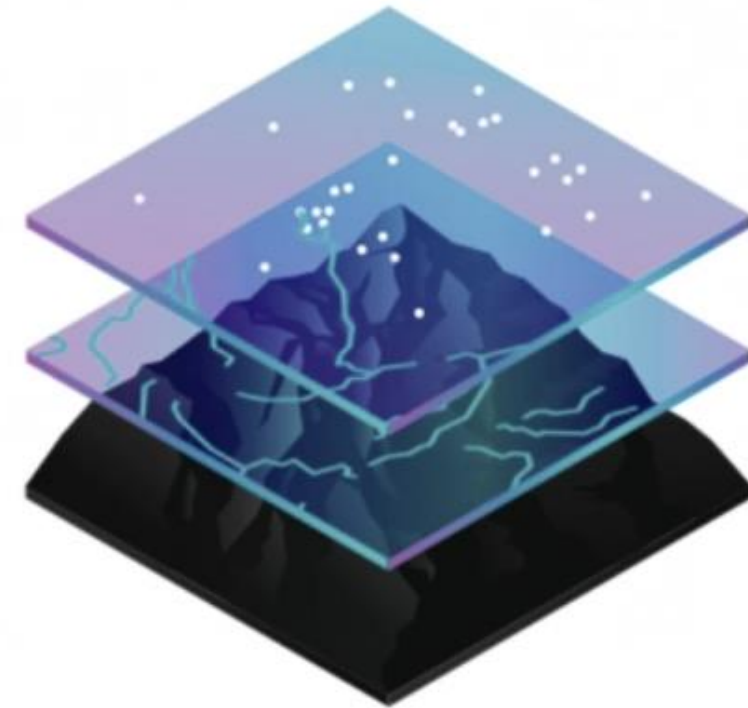
# Geospatial Solution: UNFPA Population Data Portal

# examples of geospatial data visualization



# UNFPA Partnerships on Geospatial Work

- UNFPA - Esri Enterprise Agreement & MOU
- UNFPA - UN Geospatial Service Center MOU
- Partnering with WHO on SDG3 GAP initiative - Data and Digital Health
- Partnering with UN-Habitat and EU on SDG indicator Geospatial Disaggregation by Urban Degree
- Partnering with UN GIS-Section on the use of Second Administrative Level Boundaries (SALB)



# Contribution to the One UN Geospatial Situation Room



## Data

Over 200 Census and Population **Indicators**; High-resolution satellite imagery, building footprint, admin boundaries, infrastructure

## Analysis

**Integration** of population data with other geospatial data on use cases

## Visualization

Data **Visualization** and **Dissemination**

## Capacity

**Capacity Strengthening** on GIS



# UNFPA

Delivering a world where  
every pregnancy is wanted  
every childbirth is safe and  
every young person's  
potential is fulfilled



United Nations Population Fund  
[www.unfpa.org](http://www.unfpa.org)

