



©T. Schneider/Shutterstock



UNESCO: Educational facilities and planning

Amelie A. Gagnon
Denis Pitzalis

 1 to 5 August 2022

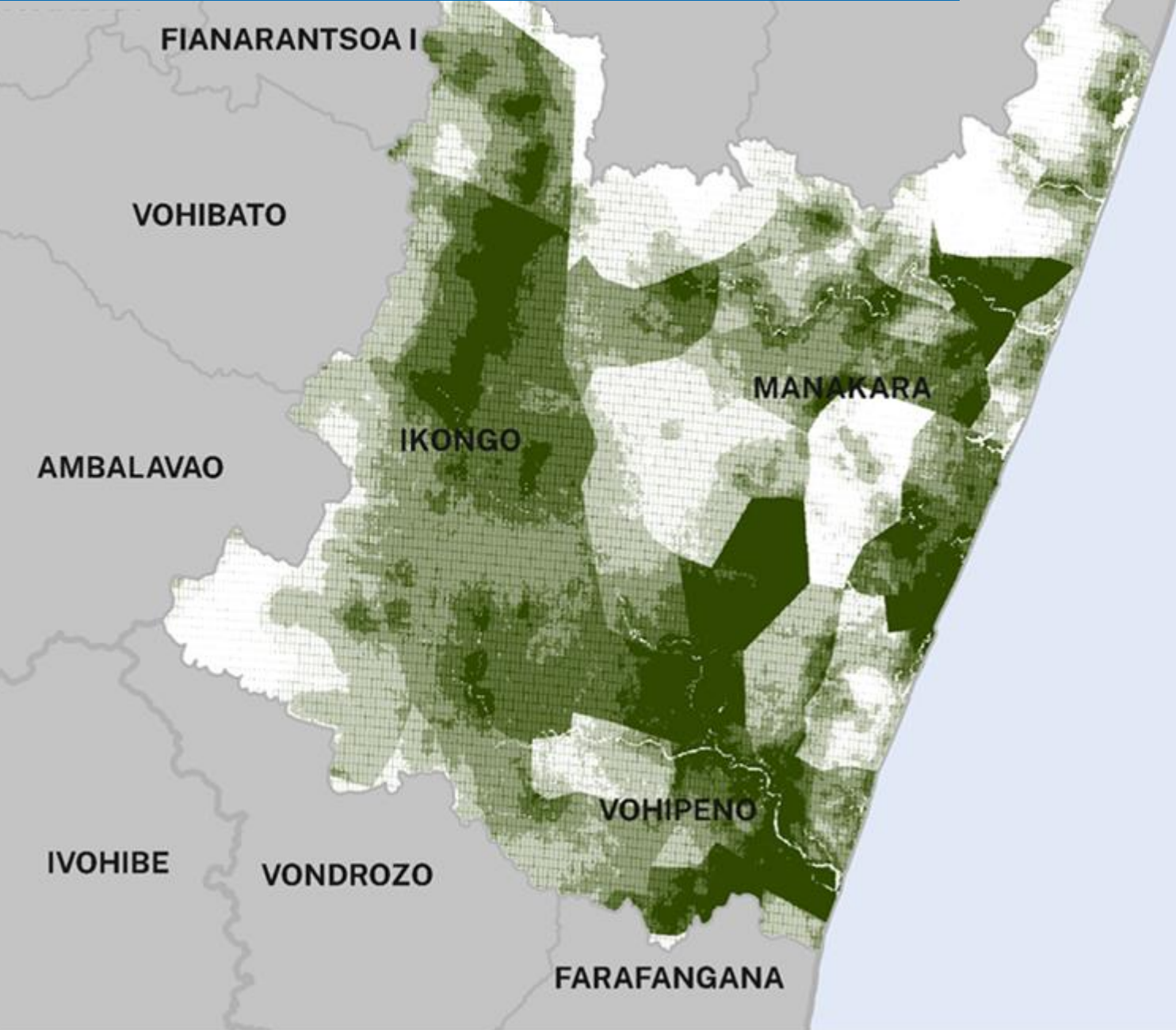
 12th Session of the UN-GGIM

 @AmelieAGagnon @DenisPitzalis

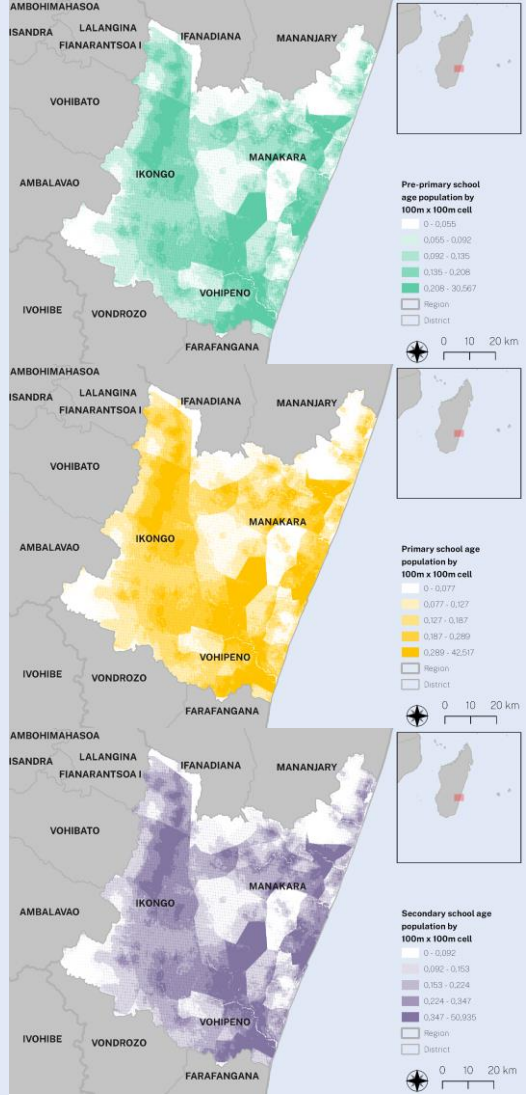
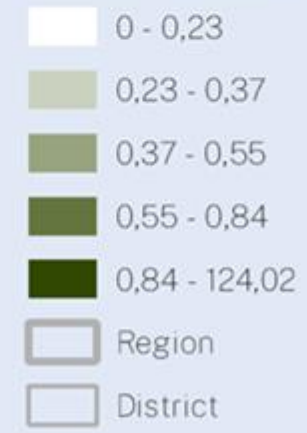


“ Micro-planning is at the intersection of policy and implementation, location and communities.

PROGRAMME-SPECIFIC SCHOOL-AGE POPULATIONS



Pre-primary, primary, and secondary school age population by 100m x 100m cell

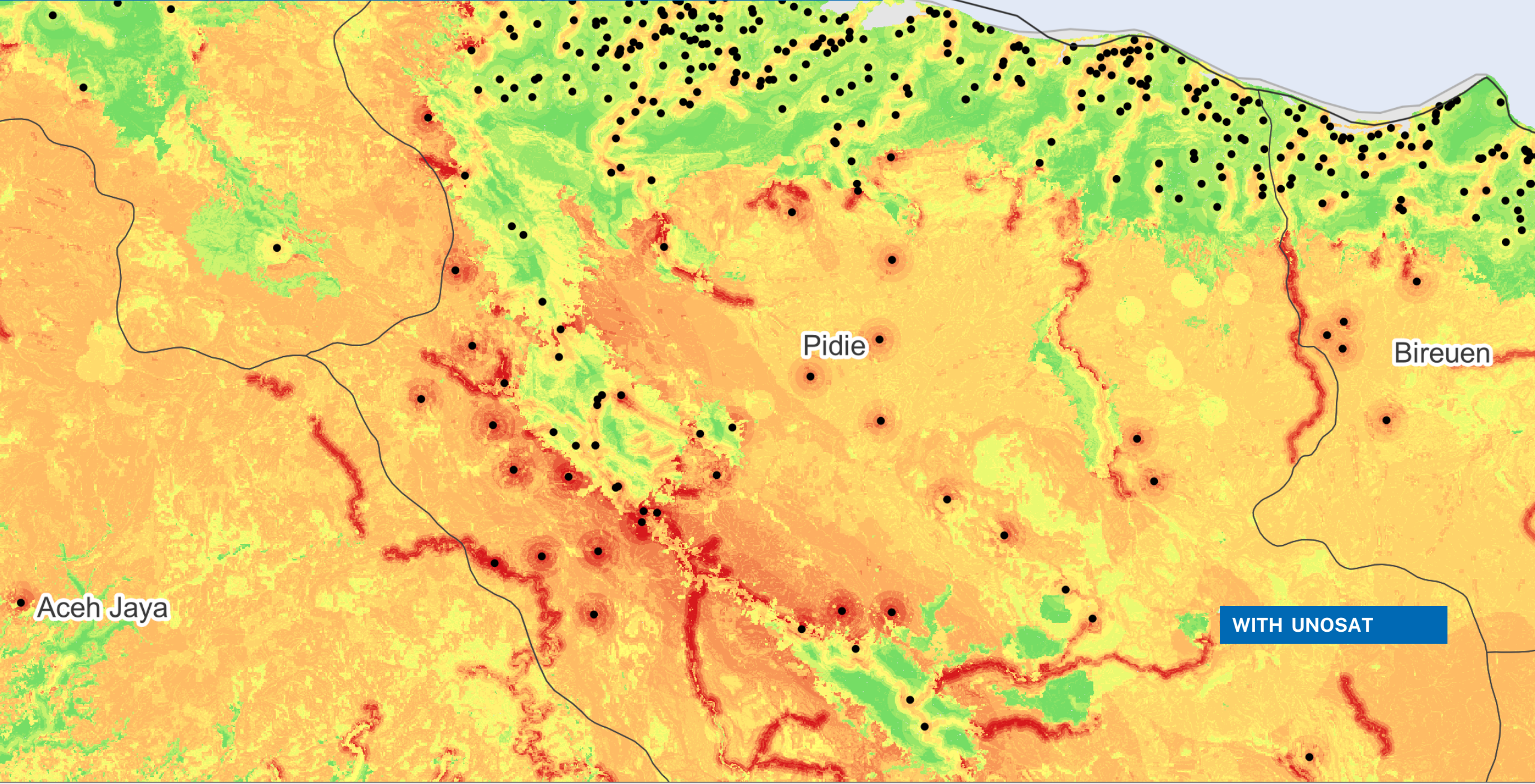


TRAVEL TIME TO NEAREST EDUCATIONAL FACILITY

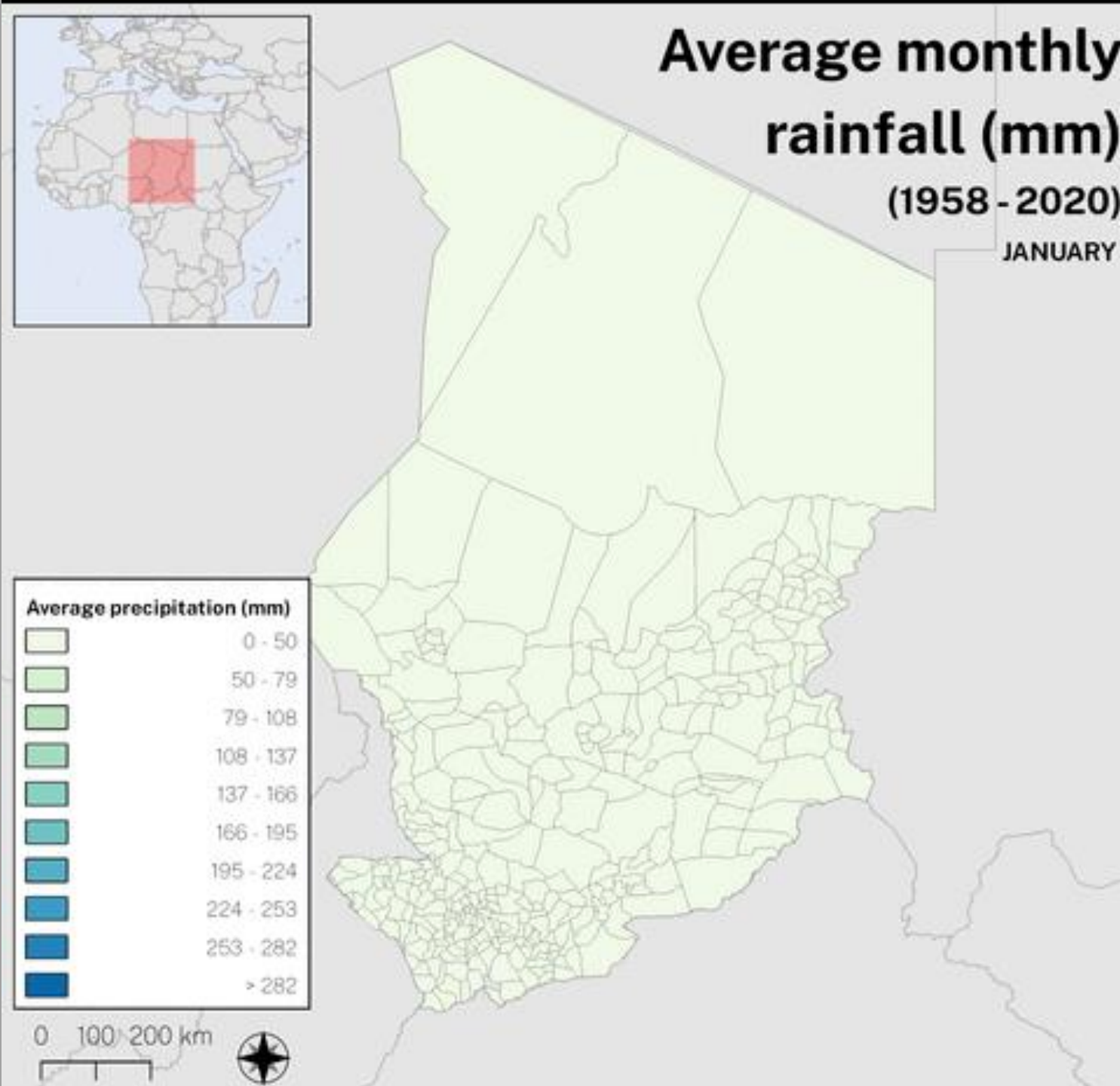
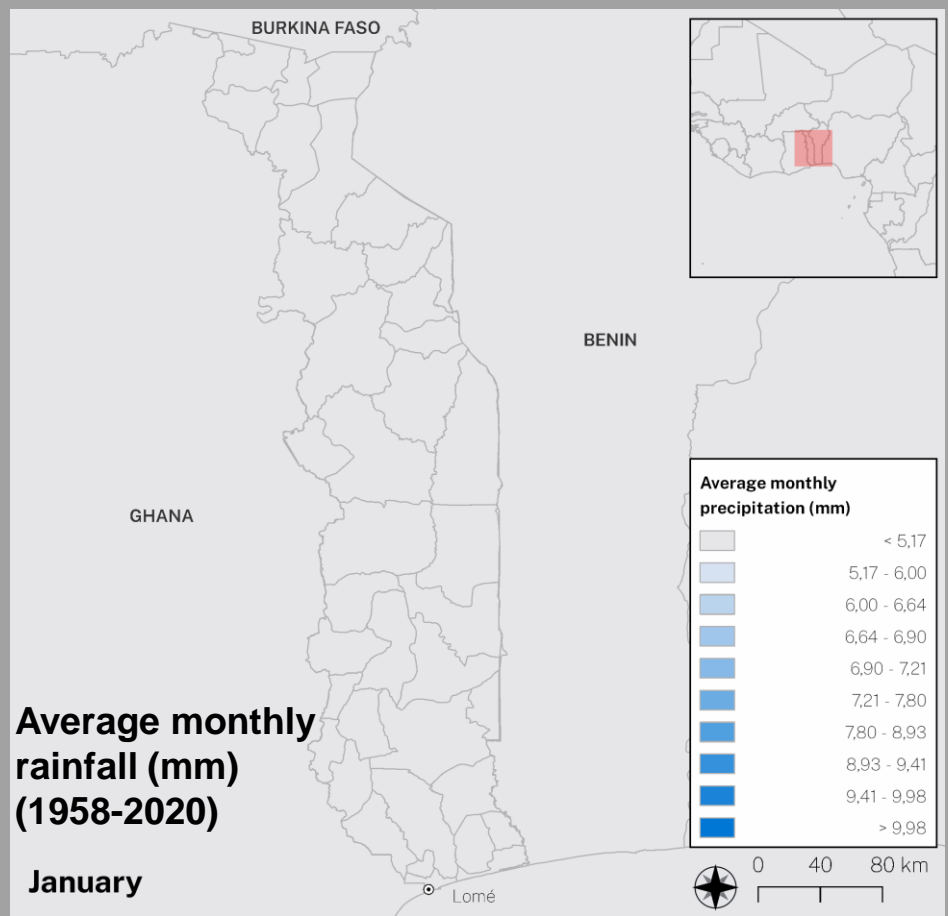


WITH GISPO FINLAND

HAZARD-RESILIENT INFRASTRUCTURES AND SITE SUITABILITY



OPTIMIZING LEARNING TIME IN SCHOOL



How can educational planning align with the One UN Geospatial Situation Room?

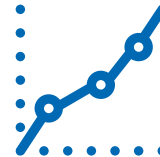
four cross-cutting areas:



Frameworks,
norms and
standards



Technical
guidance and
support to
Member States



Fit-for-purpose,
inclusive, open,
ethical data



Synergies w/
data, systems
and platforms



©T. Schneider/Shutterstock



UNESCO: Educational facilities and planning

Amelie A. Gagnon
Denis Pitzalis

 1 to 5 August 2022

 12th Session of the UN-GGIM

 @AmelieAGagnon @DenisPitzalis

