



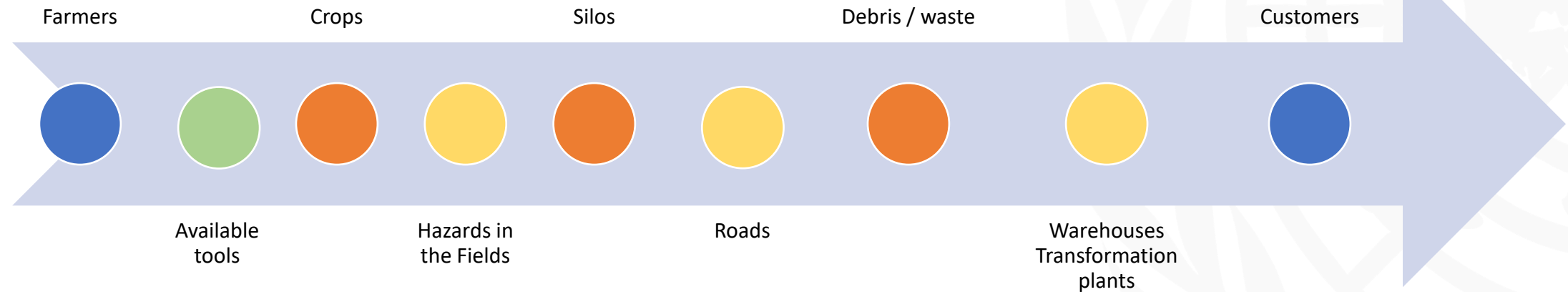
# Integrating UN data and AI for Accelerated Recovery



August 2022

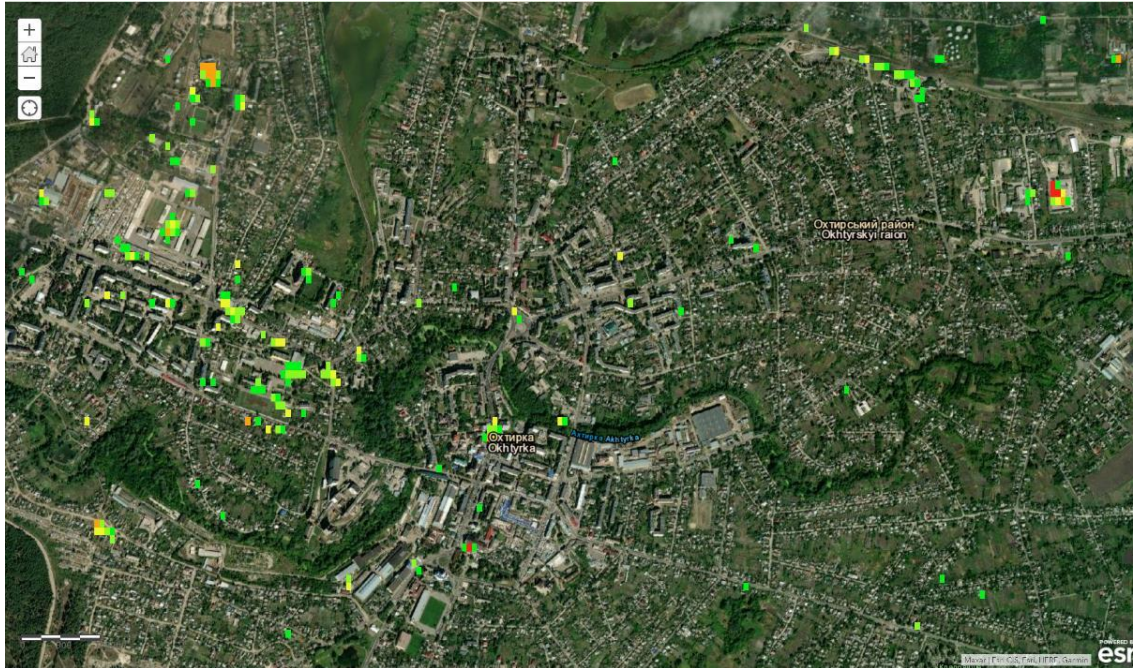
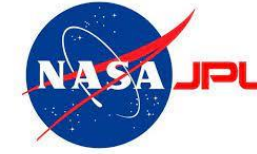
# The challenges of recovery: GIS provides solutions

To act, a government needs to understand:



...which requires to integrate / layer FAO, UNHCR, UNDP, local government, GIS .... data

Main issue: assess damages on a country scale and on several types of grounds (roads, buildings,...)



ARIA Damage Assessment for Okhtyrka, Ukraine



ARIA Damage Assessment – Validated Damages for part of Kharkiv

# Q & A

