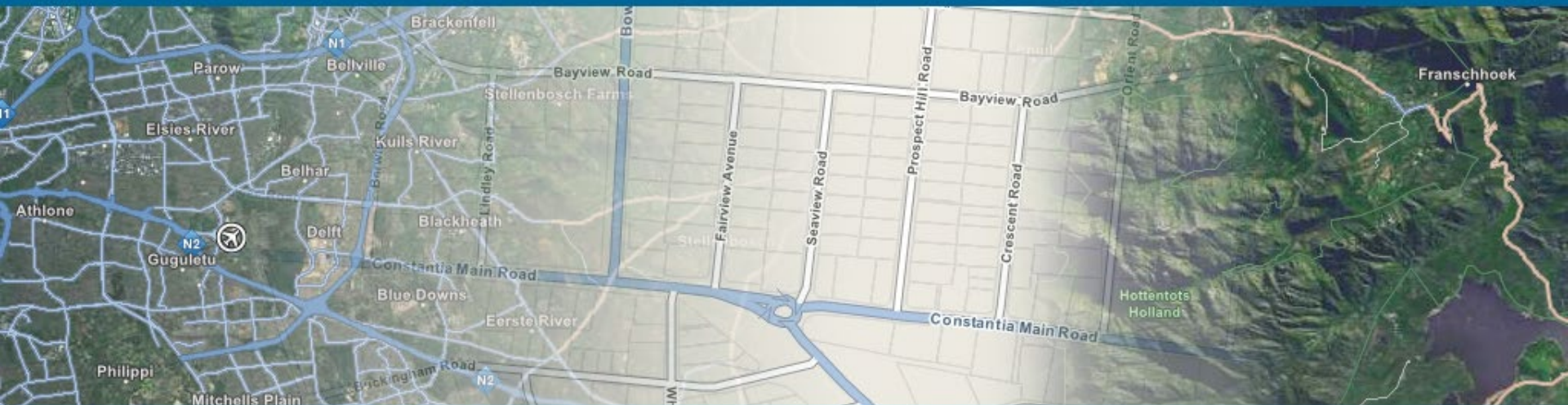


A brief history of ISO/TC 211 Geographic information/Geomatics

Mr. Mats Åhlin, ISO/TC 211 Committee manager



Oslo 1994-11-11 - Today

Chair: Olaf Østensen



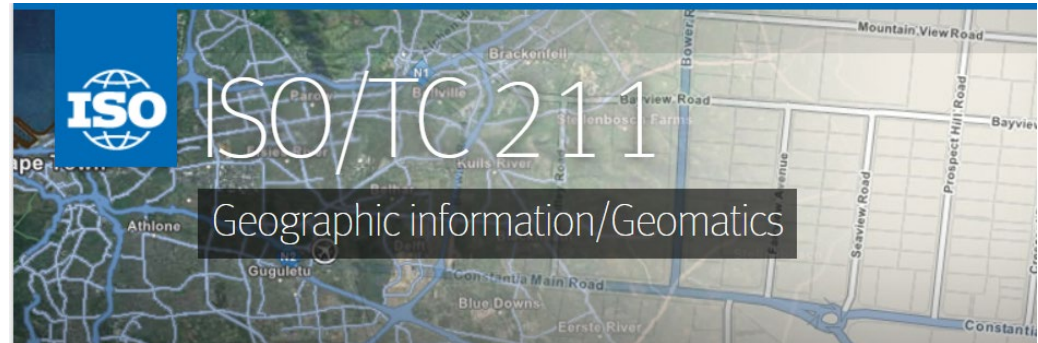
TECHNICAL COMMITTEES

ISO/TC 211

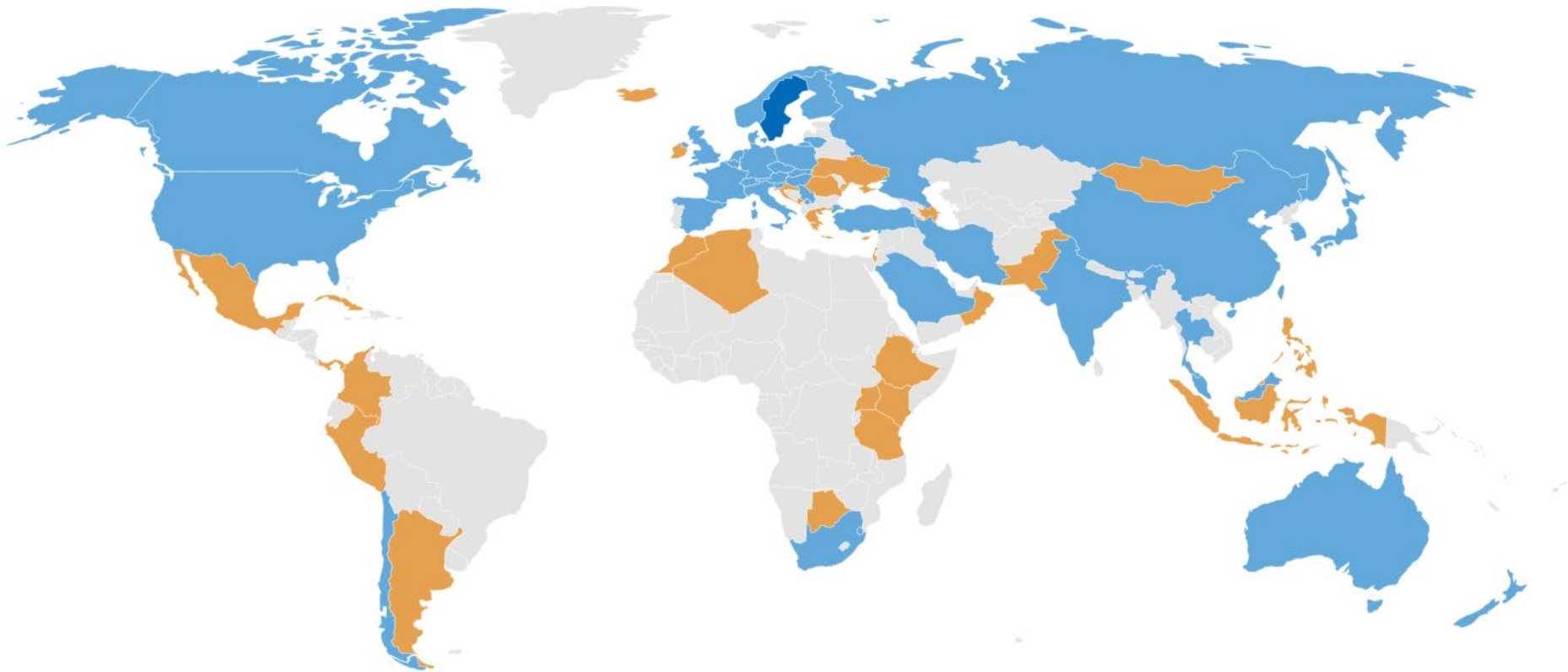
Geographic information/Geomatics



Chair: Agneta Engberg



Participations



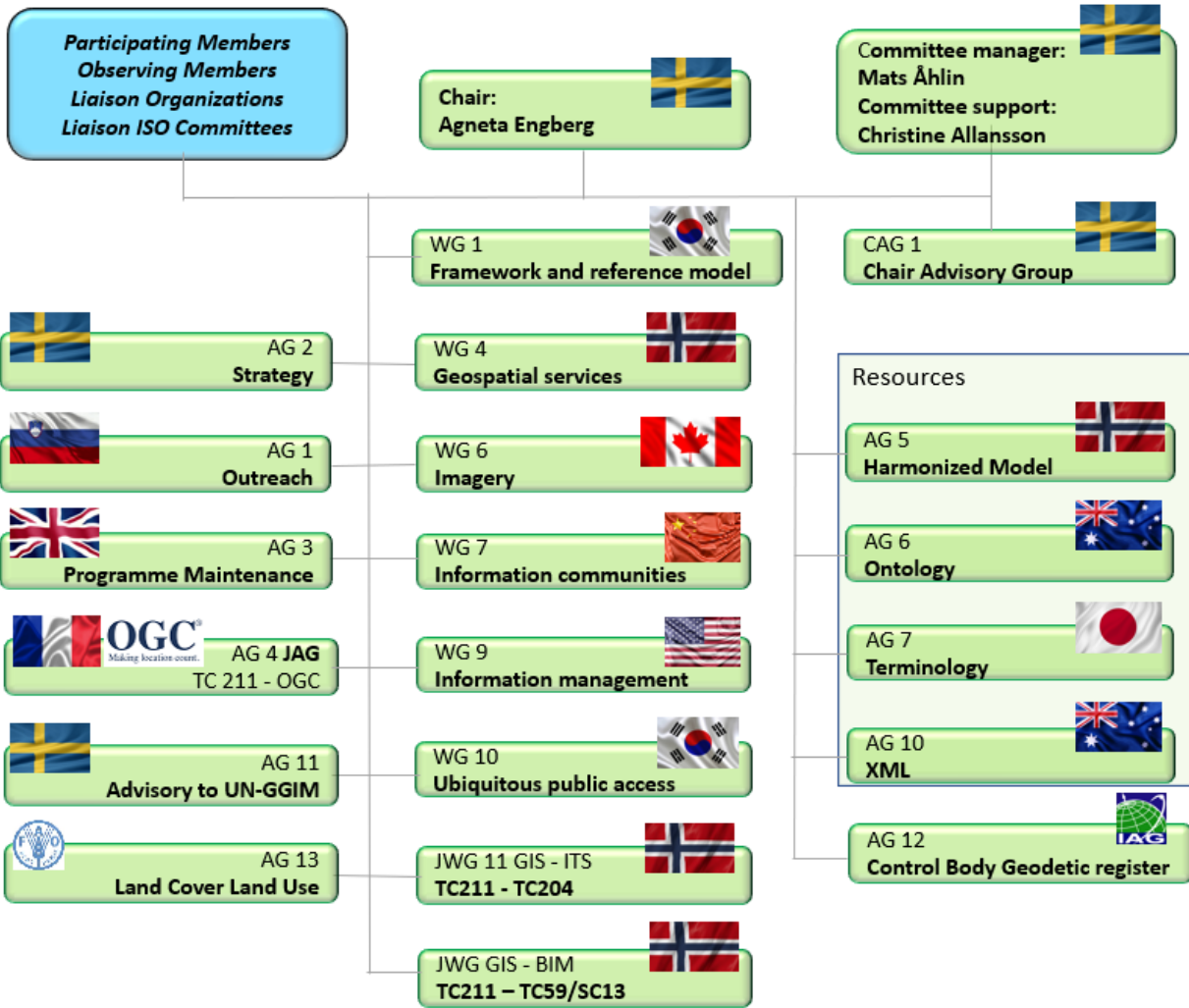
37 Participating members – 33 Observing members – 37 Liaison organization –
32 Liaison with ISO/TC

Scope of standardization

The scope of ISO/TC 211, unchanged since 1994, is very wide, and the work targets several key segments:

- modelling and documentation of geographic information, traditionally important for major actors like the public sector;
- Spatial Data Infrastructures (SDIs) with emphasis on sharing and dissemination of geographic information through services;
- embedding of geographic information in everyday life – ubiquitous geographic information;
- some specific subject domains where geographic information is an important component and where multiple disciplines are involved.

ISO/TC 211 Structure



ISO/TC 211/WG 7 Information communities

WG 7

Information communities



Today's
Convenor
Prof. Yuqi Bai
from China



First Convenor
Mr. Antony Cooper
from South Africa

WG 7 on information communities focuses on standardization issues related to conceptual modeling of geographic features including the documentation of geographic features in feature catalogues, dictionaries, and registers. The work includes standardization of applications schemas in specific domain (e.g. land administration domain model, land cover, etc.). The working group also addresses issues about metadata for the description of geographic information resources (data and services), ontologies in order to support the Semantic Web, and addressing as a mechanism for georeferencing geographic feature.

Four important areas in working group 7





Read more about ISO/TC 211 Geographic information/Geomatics at:
<https://committee.iso.org/home/tc211>

Thank You

ISO/TC 211 Committe Manager
Mats Åhlin (mats.ahlin@sis.se)