



Migration from Vanua View – Vanua GIS Portal

*Sub Regional Workshop – United Nations
Integrated Geospatial Information Framework
for the PIC| 14th November, 2024*



1. Vanua View



2. Migration



3. Vanua GIS

Outline of Presentation

Vanua View Brief

- 1993 – 1996** Retrieval and digitization of Fiji's land-related data by FLIS with assistance from NZ Govt.
- 1997** FLIS partners with Terralink NZ to develop a desktop based LIS/GIS data viewer for Fiji.
- 1998** VanuaView software package officially launched with other versions coming later.



Vanua View Brief



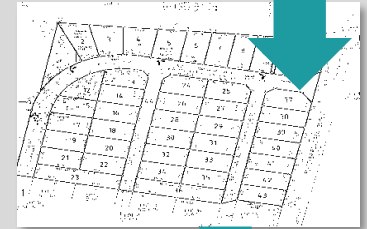
Air
Survey



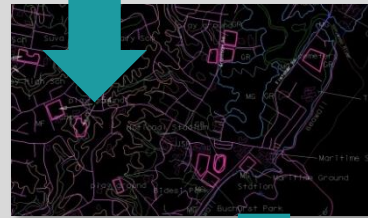
Field
Survey



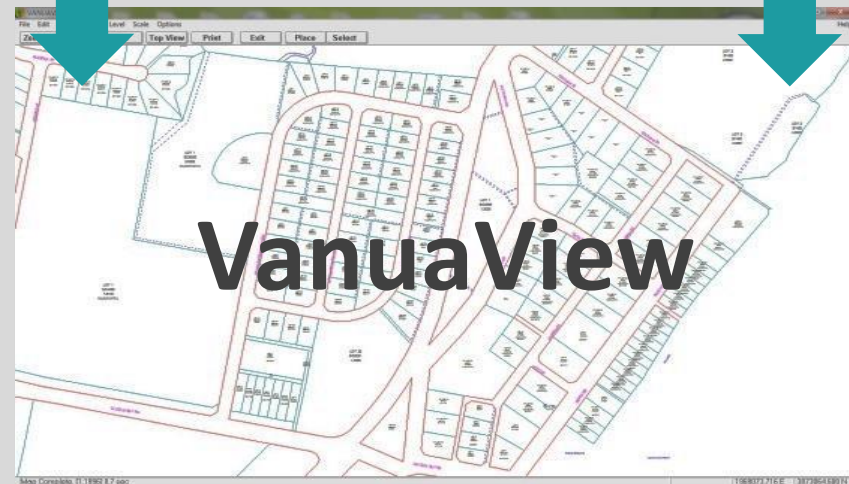
Aerial
Photos



Survey
Plans



Microstation
Clips (.dgn)



Vanua View

Vanua View Brief

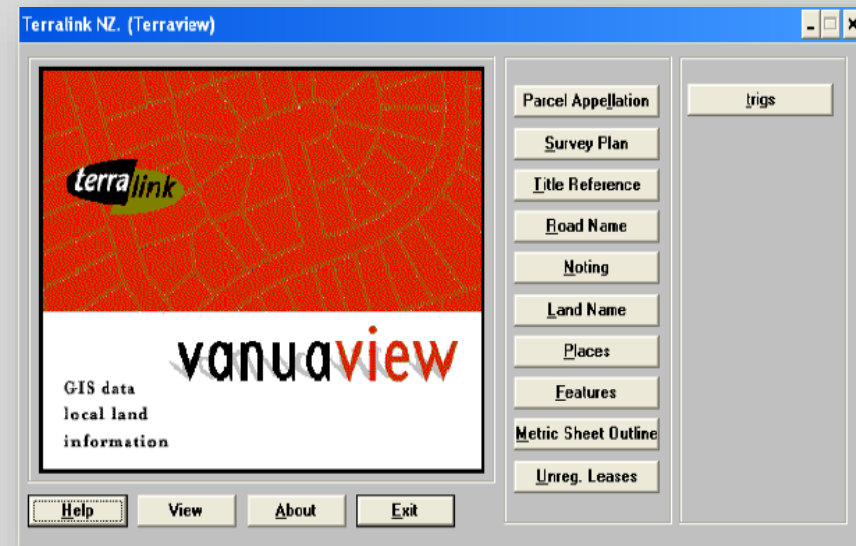
Early LIS/GIS Desktop Applications

1. VanuaView Standard –
 - Cadastral
 - Topographic
 - Native Land Commission
2. VanuaView Customized – e.g.
 - Ministry of Education – Schools
 - Public Service Commission – Govt Quarters
 - Ministry of Regional Development – Disaster Management Areas
3. VanuaInfo – integrated GIS system for state land

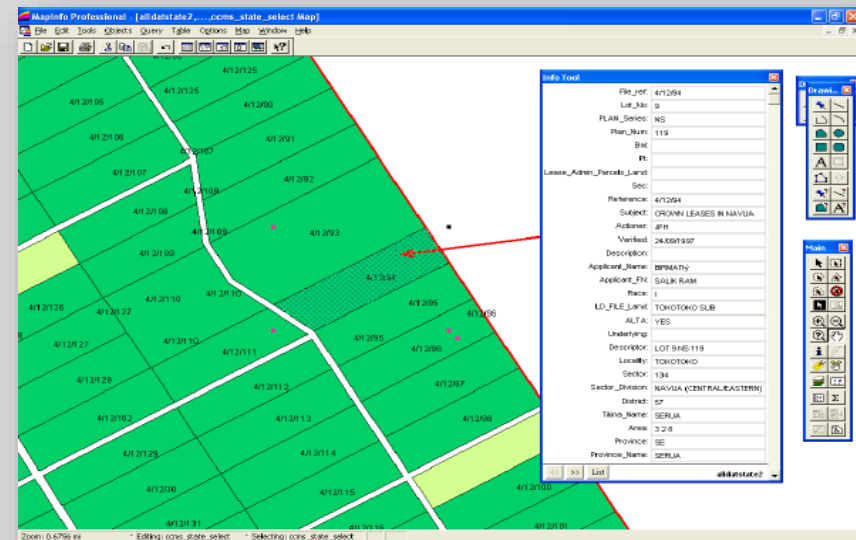
Early LIS/GIS Desktop Applications

Vanua View Brief

VanuaView
Microstation
(.dgn) based



VanuaInfo
MapInfo (.tab)
based



Vanua View Brief

2000 – NZ Govt withdraws FLIS funding due to political instability. FLIS aligns to Department of Lands for funding. Budget constraints introduces new challenges related to –

2011

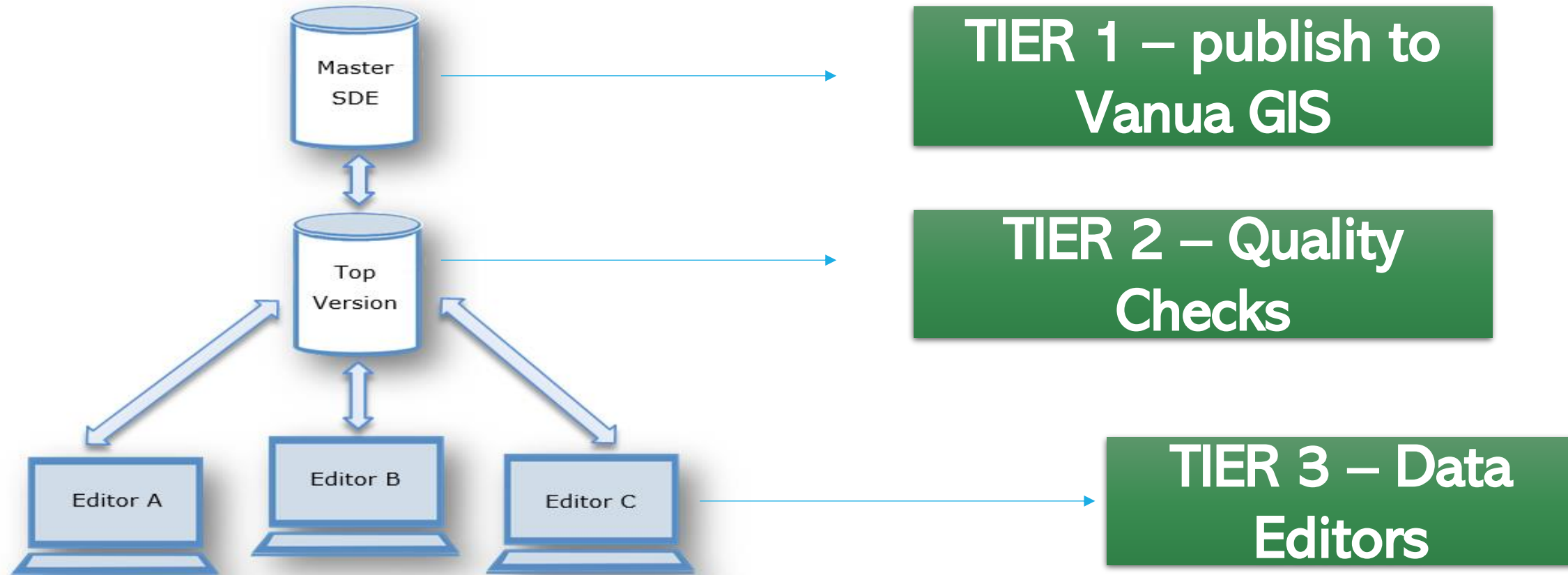
- Sustaining VanuaView applications
- Maintaining data integrity and quality
- Introducing data sharing standards
- Accessing training opportunities
- Providing technical support to stakeholders
- Staying up-to-date with global software, hardware and network changes
- Maintaining FLIC membership and meetings
- Developing new applications, e.g. –
 1. Fiji Land Information Portal
 2. Fiji Web Maps

ESTABLISHMENT OF A SPATIAL DATA HUB - GOVERNMENT

- In 2014, CBUL through the Fiji Geospatial Information Management Council (FGIMC) the Ministry of Lands & Mineral Resources has been endorsed to :
 1. *Centralise all datasets for government under one platform*
 2. *Disseminate the datasets as “usable information” with a click of a button to “aid decision making” with regards to land information*
- The custodianship of these dataset's rests with the responsible agency and are obliged to provide updates when made available.
- Storage, use and dissemination of government information must follow ITC's Policies and Regulations (includes license procurement & agreements)

ESTABLISHMENT OF A SPATIAL DATA HUB - GOVERNMENT

Three Tier Concept :



SPATIAL DATABASE ENGINE (SDE)

Zoning

Transport

Utilities

Geology

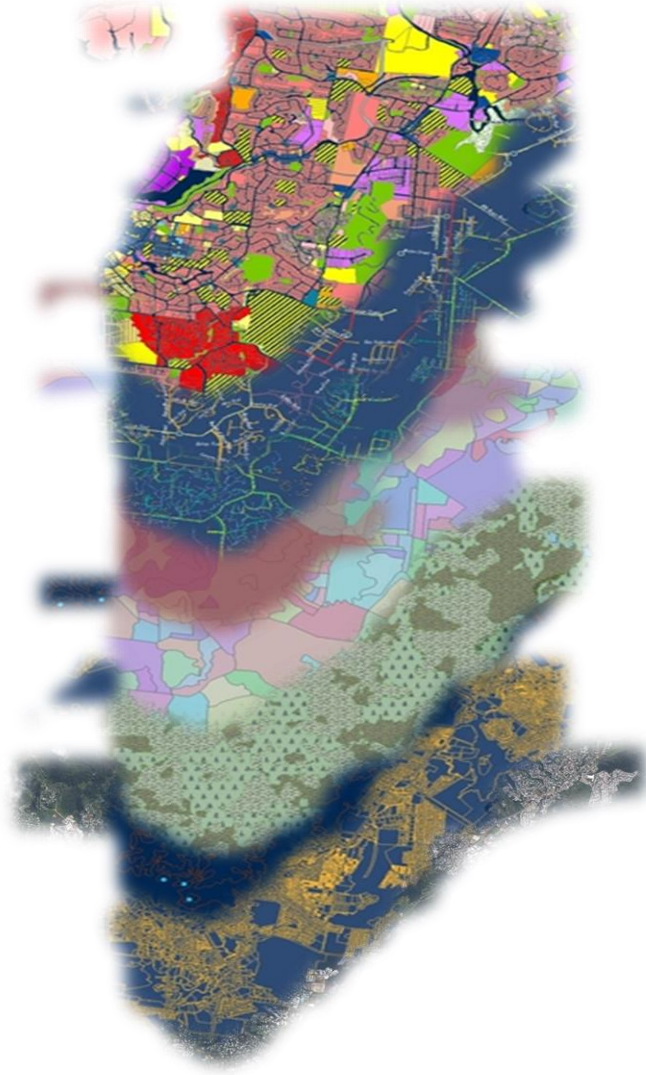
Demography

Agriculture

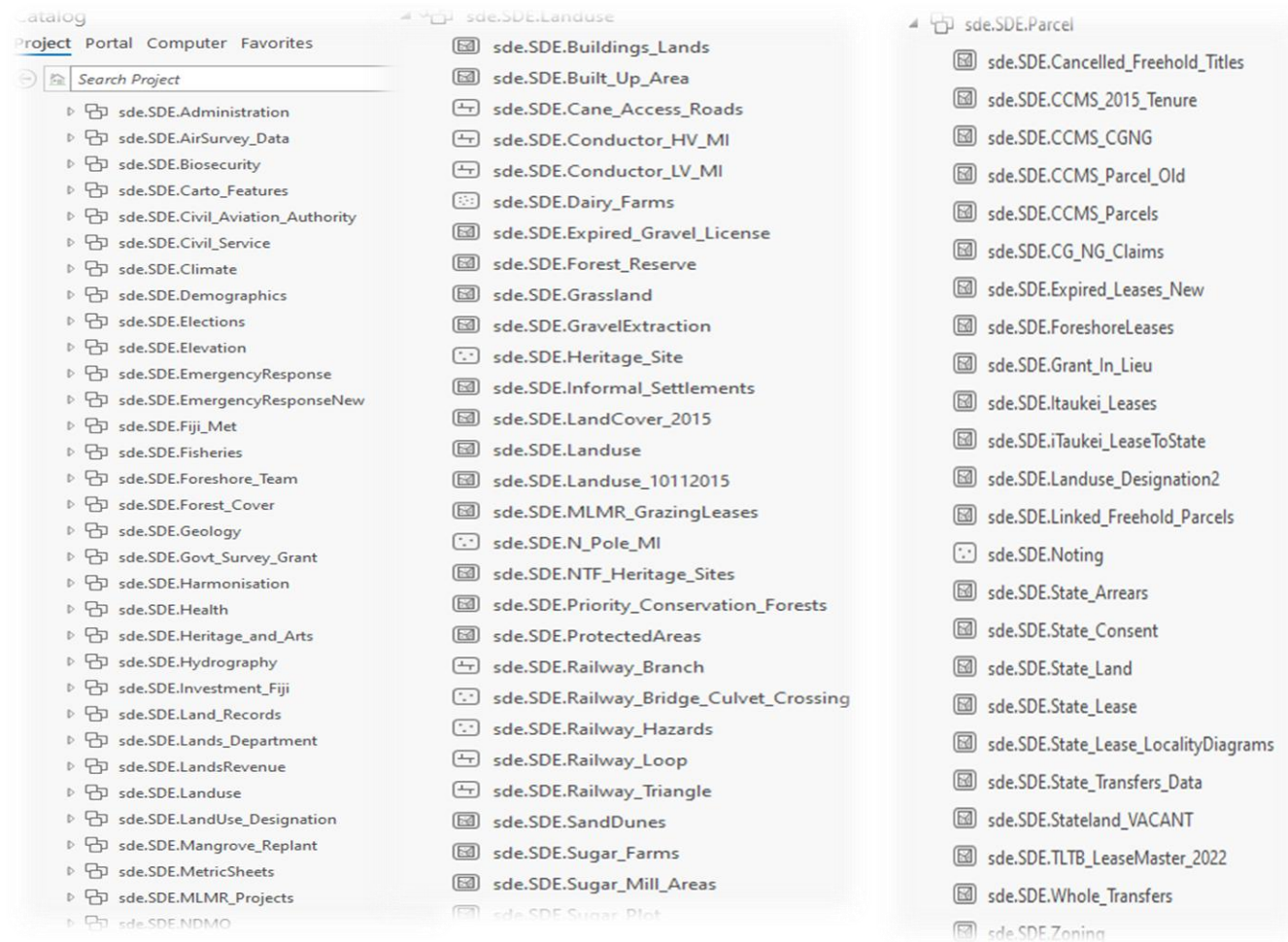
Topography

Cadastral

Climate



Consolidation of Data from FGIMC Member Agencies



Vanua GIS Platform

Multiple users in the Ministry edit their own versions then Administrators push their edits up to VanuaGIS.

The screenshot shows the ArcGIS Server Manager interface. The 'Users' tab is active, displaying a table of users in the Identity Store. A 'Find User' dialog box is open, showing a list of folders. On the right, several map services are listed with their status and instance counts.

Username	Full name:	Email:
A.Ralleqa	Asivorosi Ralleqa	manaralleqa@gmail.com
Abaramo_q	Abaramo Qio	abaramovosa@gmail.com
abdul_mufeez	Abdul Mufeez	abdul.mufeez@waterways.gov.fj
abdul_r	Abdul Rasheed	scf@youthandsports.gov.fj
abhinash_chand	Abhinash Chand	abhinash.chand@govnet.gov.fj
aborosio_d	Aborosio Daurewa	aborosio.daurewa@scc.org.fj
Aca.T	ACA TOKALAUVERE	tokalauveredusilele@gmail.com
adharshani_k	Adharshani Kumar	adharshani.kumar@lands.gov.fj
afoa_k	Afoa Keil	afoa.kahele-keil@govnet.gov.fj
agnes_h	Agnes Hansen	agnes.hansen@mrd.gov.fj

Find User: Emergency_Response, Fiji_Met, GIS_Team, Images, Locators_2023, MACC, MOH, NewFolder, Oceans, Revamp_Locators, Sugar_Information, Survey_Grant, System, Utilities

Services:

- Buildings_Settlements (Map Service): Service Runtime: ArcGIS Pro, Instance Type: Shared, Status: Started
- Cadastral_Basemap (Map Service): Service Runtime: ArcMap, Instance Type: Dedicated, Status: Started
- Elevation_and_Depth (Map Service): Service Runtime: ArcMap, Instance Type: Dedicated, Status: Started
- Functional_Areas (Map Service): Service Runtime: ArcMap, Instance Type: Dedicated, Status: Started



Database



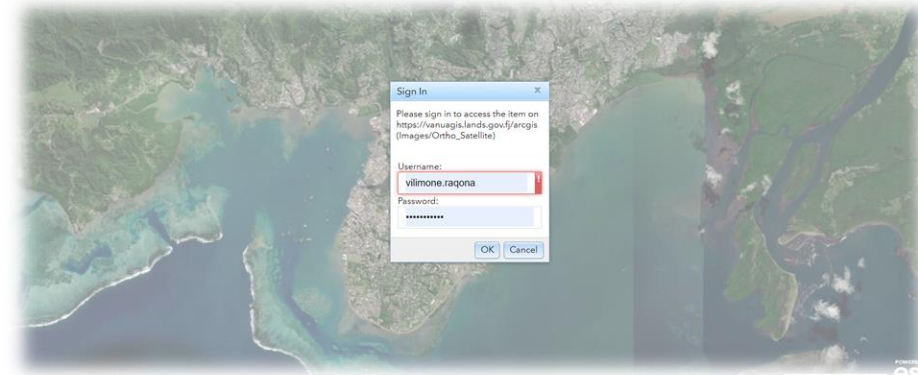
Desktop



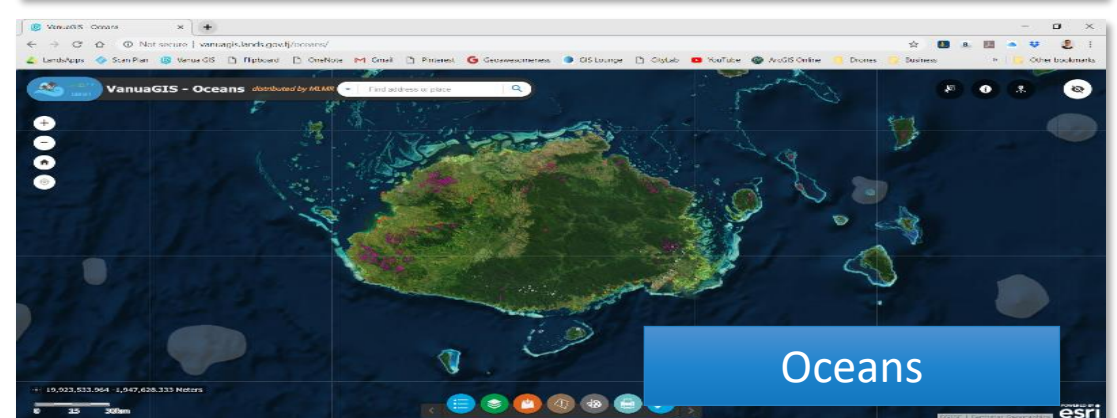
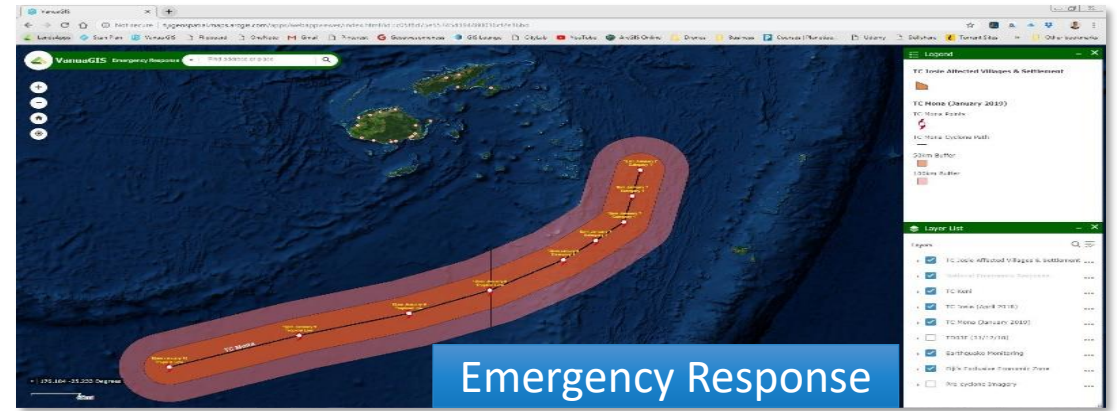
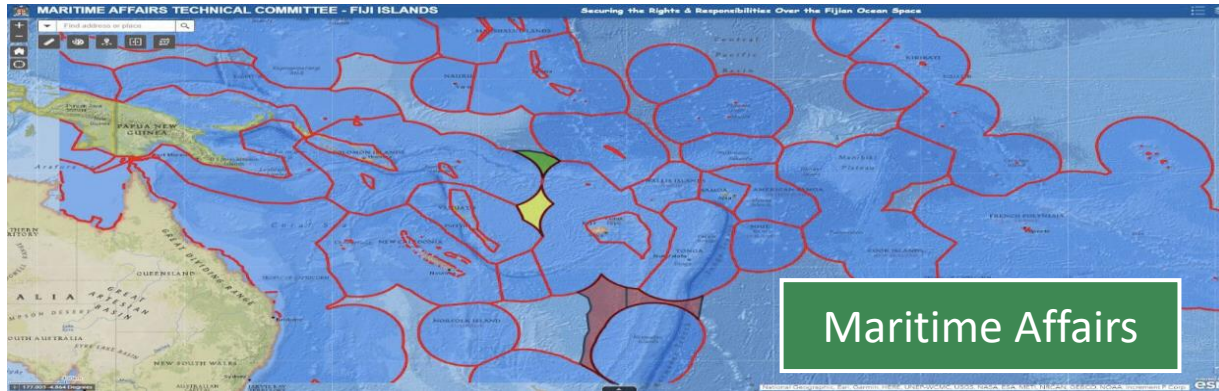
GIS Server



Web

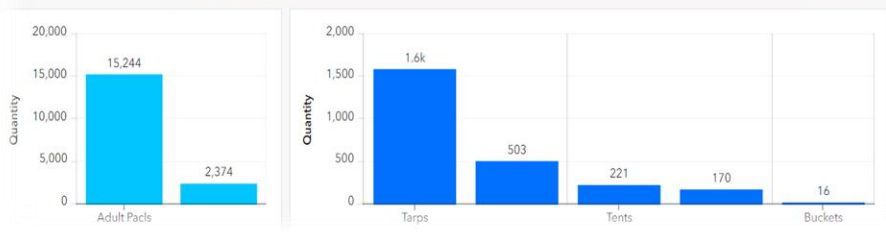
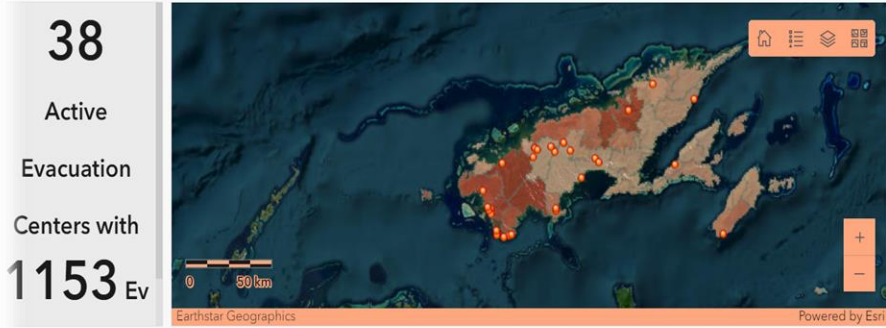


Vanua GIS Platform

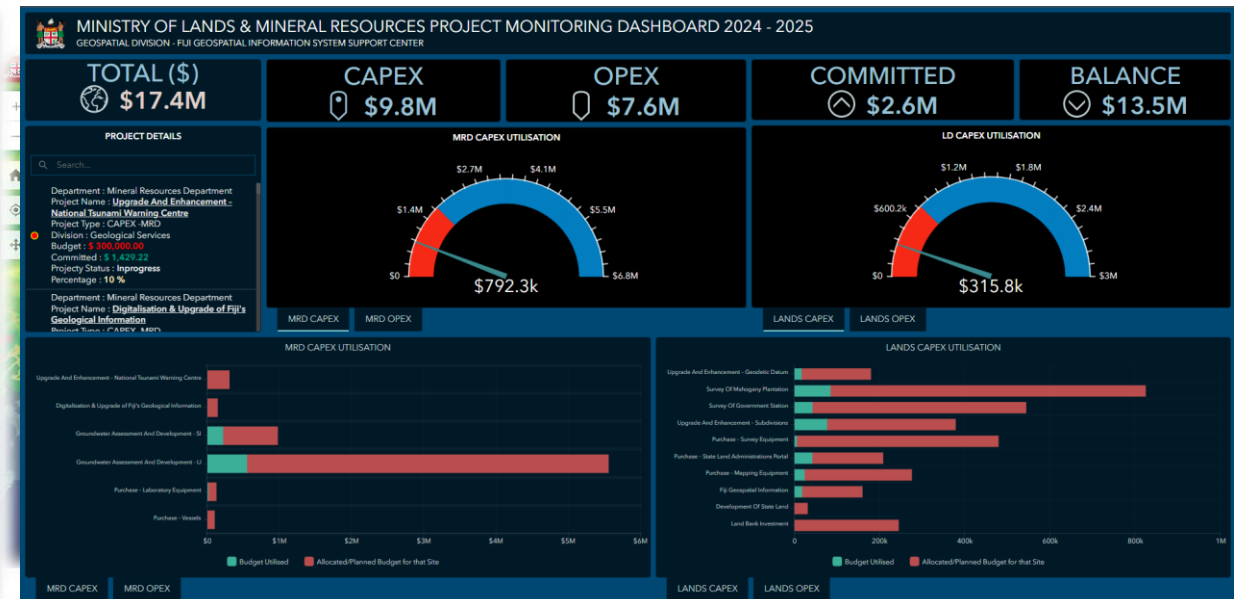
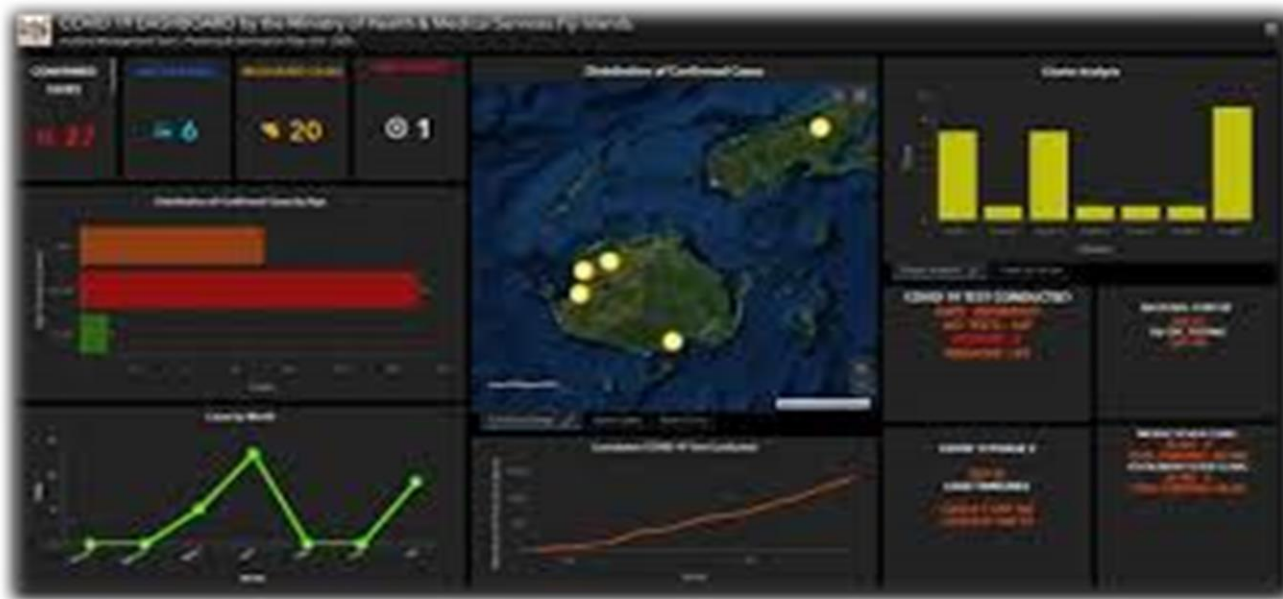
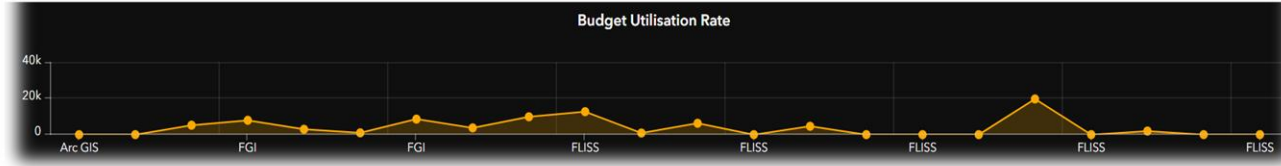
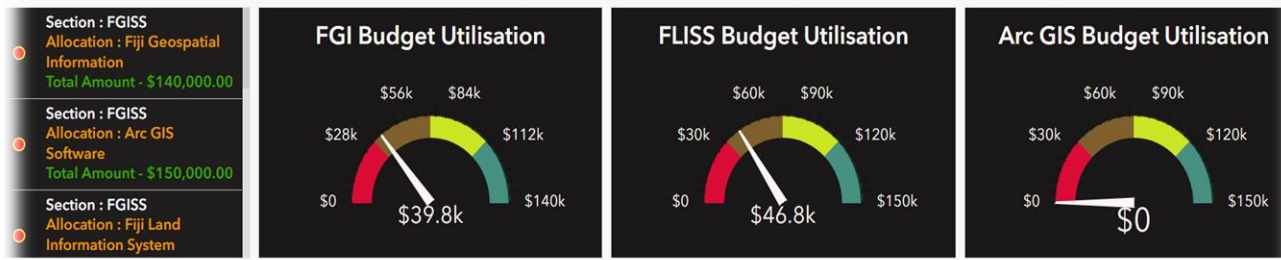
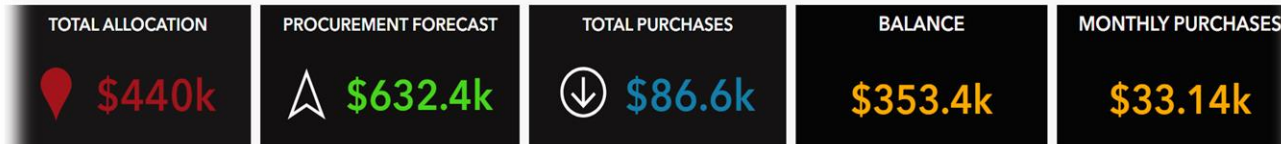


Vanua GIS Platform

TC YASA NORTHERN DIVISION SITUATION UPDATE



FGISS BUDGET MONITORING DASHBOARD 2023 - 2024



BENEFITS

1. Accessibility
2. Data security
3. Data Interoperability
4. Data Standards for accuracy and reliability
5. Fosters data sharing
6. Accountability and transparency
7. Modern technologies and approaches to tackle geospatial problems

Any
Questions?

