



**UNITED NATIONS GLOBAL GEODETIC  
CENTRE OF EXCELLENCE**

**First Joint Development Plan  
for Global Geodesy**



## UNITED NATIONS GLOBAL GEODETIC CENTRE OF EXCELLENCE (UN-GGCE)

### UN CAMPUS, BONN, GERMANY

*(established by an agreement between the United Nations and the Federated Republic of Germany on 7<sup>th</sup> October 2022)*

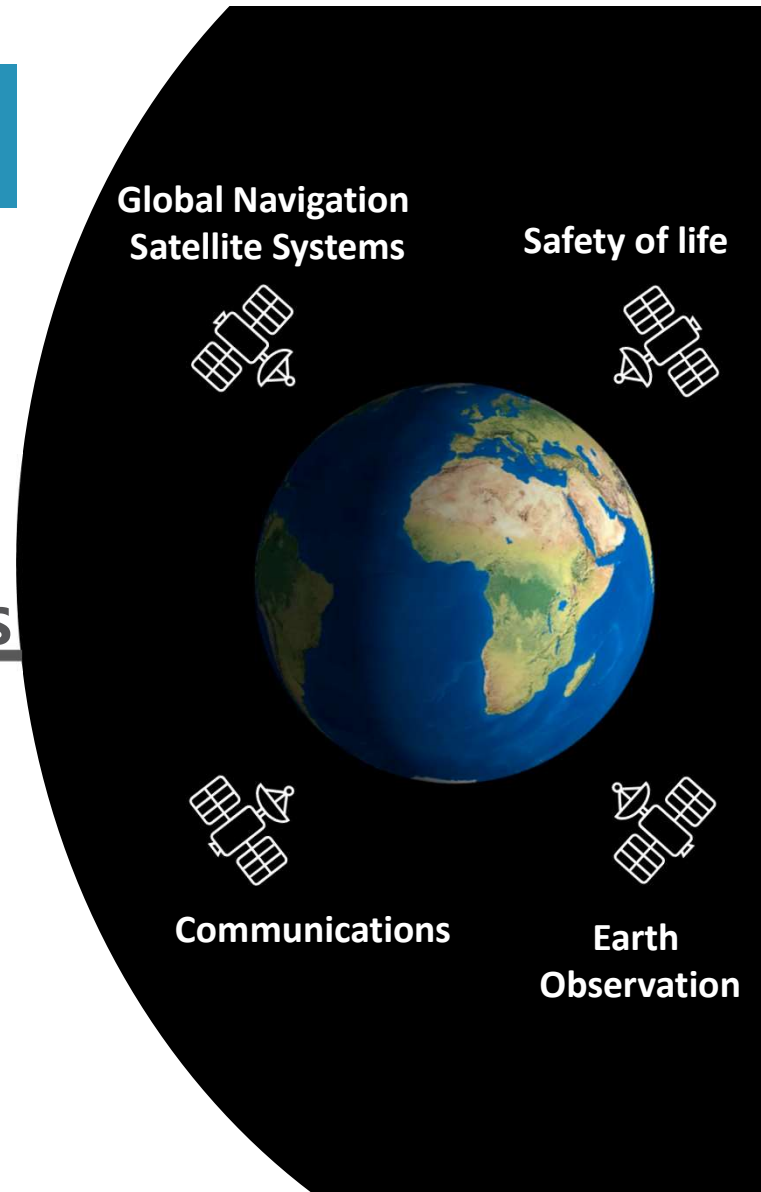
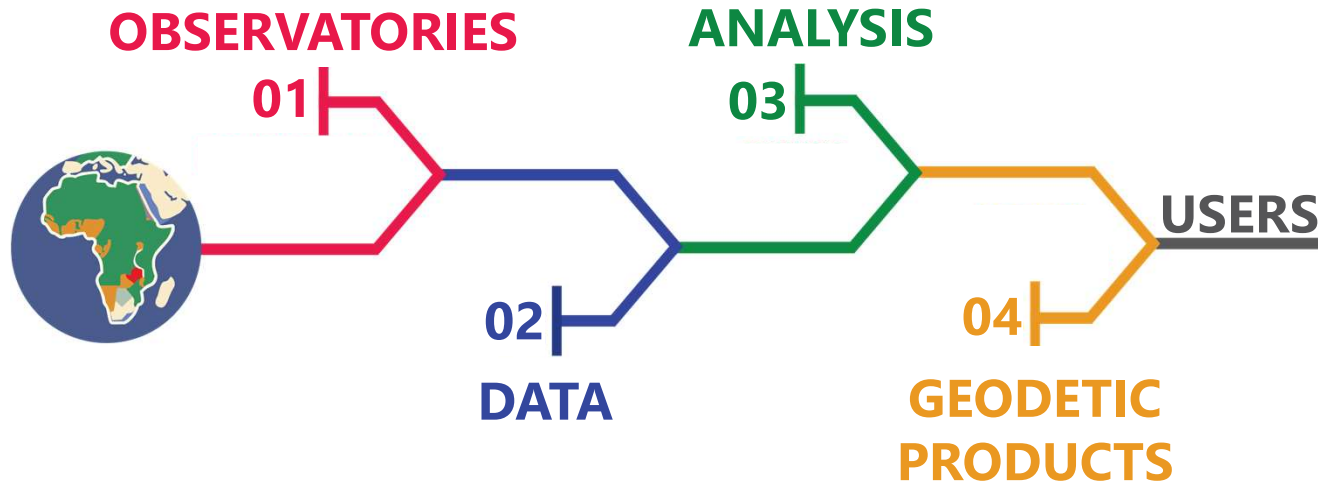
**The Overarching Goal** of the UN-GGCE is, recognizing the importance of the global geodesy supply chain, to **assist** Member States and geodetic organizations to coordinate and collaborate to sustain, enhance, access and utilize an accurate, accessible and sustainable Global Geodetic Reference Frame (GGRF) to support science, society and global development.

Stronger . Together



<https://ggim.un.org/UNGGCE/>

# Global Geodesy Supply Chain

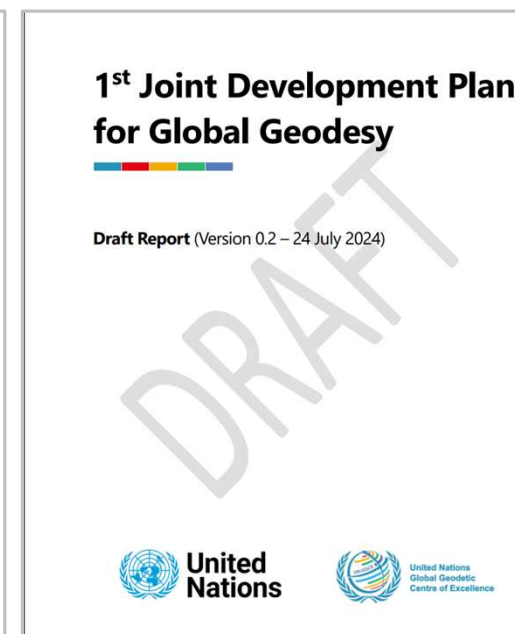
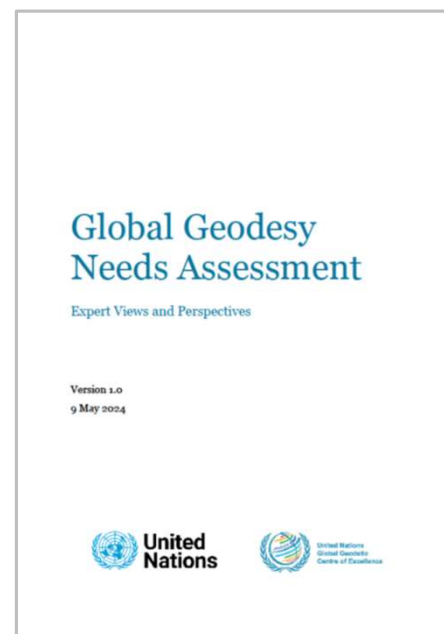


Stronger. Together.

# First Joint Development Plan for Global Geodesy

- The weaknesses are described in detail in the **Global Geodesy Needs Assessment**
- Translated needs into actions in **1<sup>st</sup> Joint Development Plan** with activities to:
  1. Avoid further degradation of the supply chain (support current operational requirements)
  2. Robust (improve reliability)
  3. Next Generation (meet more ambitious requirements)
- Includes activities for UN-GGCE, Member States and partners
- Draft is currently available for review  
[https://ggim.un.org/meetings/GGIM-committee/14th-Session/documents/Draft\\_Joint\\_development\\_Plan\\_v0.2.pdf](https://ggim.un.org/meetings/GGIM-committee/14th-Session/documents/Draft_Joint_development_Plan_v0.2.pdf)

Stronger. Together.

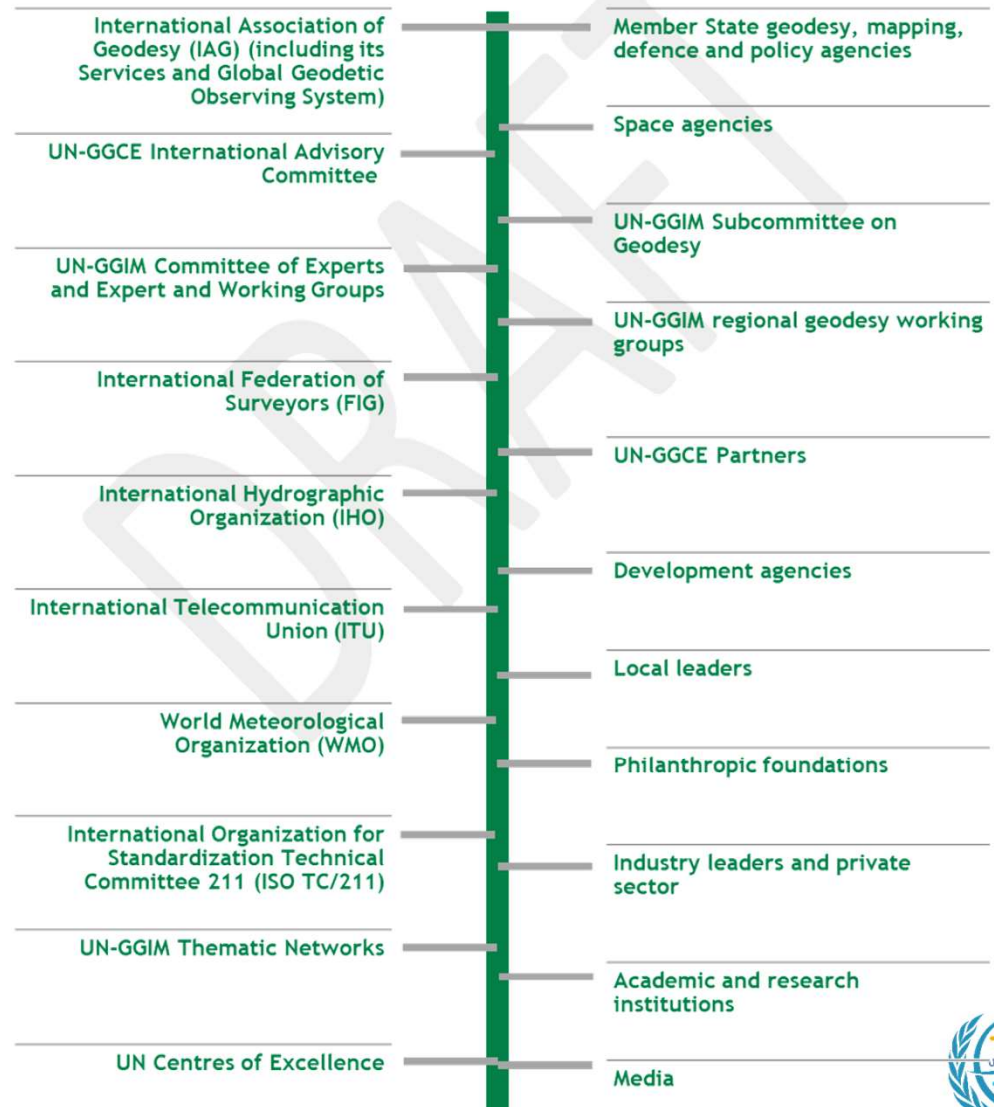


# PARTNERSHIPS FOR ACTION

The activities of the *Joint Development Plan* are beyond the scope of any single agency to tackle alone. The goals and impacts will only be realised if Member States, the UN-GGCE and partners take responsibility to lead, collaborate and deliver on the activities outlined below. The partners involved include but are not limited to those shown below.



Stronger. Together.



# Linking Strategy to Activities

## GOALS

- Long-term and strategic
  - e.g. Geodesy is recognized as being essential to the operation of critical infrastructure and economic development.

## OBJECTIVES

- Still strategic but a little more detail
  - e.g. Member States are engaged in geodesy governance

## OUTCOMES

- What is achieved
  - e.g. Member States have improved governance arrangements within their country including a workplan to manage strategic, operational, and technical geodetic risks.

## ACTIVITIES

- How it is achieved
  - e.g. Establish, or strengthen an existing, country level geodesy working group which includes representatives from government (science, policy, defence), industry and academia.

Stronger. Together.



## Phase 1: Avoid further degradation of the global geodesy supply chain

### Objective 1.1 – Member States are engaged in geodesy governance

#### Outcomes

- 1.1.1 Member States have improved governance arrangements within their country including a workplan to manage strategic, operational, and technical geodetic risks.
- 1.1.2 Governments, science organizations, industry, and universities understand their roles in the global geodesy supply chain, as well as how they relate to other elements of the chain.
- 1.1.3 Member States understand their dependency, on the global geodesy supply chain, as well as the impact of loss due to failure or degradation of the global geodesy supply chain.
- 1.1.4 Risks associated with weaknesses in the global geodesy supply chain are beginning to be mitigated.

#### Proposed Activities of Member States

1. Establish, or strengthen an existing, country level geodesy working group which includes representatives from government (science, policy, defence), industry and academia.
2. Lead the development and implementation of a country level strategy and action plan to:
  - Assess strategic, operational and technical risks associated with weaknesses in the global geodesy supply chain.

- Increase awareness of the global geodesy supply chain.
- Address risks that, if realised, would have significant economic, social, and environmental consequences.

#### Proposed Activities of UN-GGCE

3. Develop and share guidance material which can be used by Member States to establish or strengthen country level working groups, strategies and action plans.
4. Establish a website for Member States to voluntarily report on the Activities assigned to them in the Joint Development Plan, monitor their progress and provide summary statistics of Member State activities.
5. Engage with Member State representatives and assist them to establish or strengthen country level working groups, strategies and action plans.

#### Proposed Activities of Partners

6. Engage with Member State representatives and assist them to establish or strengthen country level working groups, strategies and action plans.

