

GEOSPATIAL INFORMATION AND STATISTICS ACCELERATING THE IMPLEMENTATION OF **NATIONAL DEVELOPMENT PRIORITIES AND THE SDGS**

Experiences and perspectives from Mexico

Paloma Merodio Gómez



01



National System of Statistical and Geographical Information

02



SDGs Monitoring

03



Accelerating the SDGs monitoring

04



Conclusions

INDEX

National System of Statistical and **Geographical** Information

SNIEG 

SNIEG



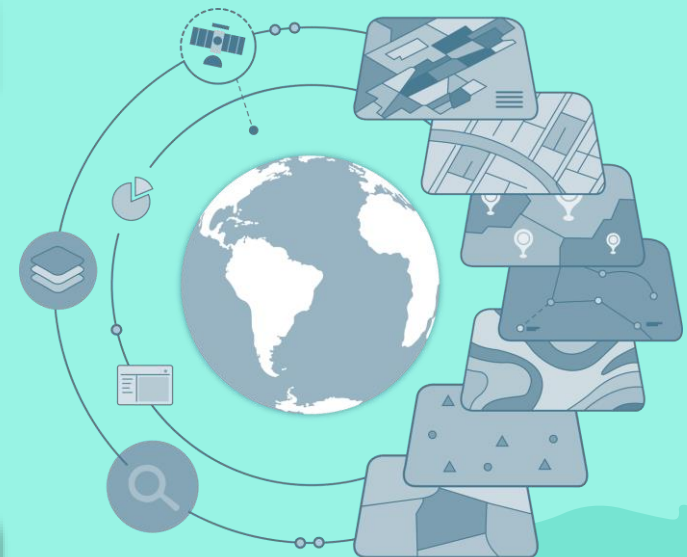
National Advisory Council



National Information Subsystems



INEGI





National Information Subsystems



**Demographics
and Social**



Economics

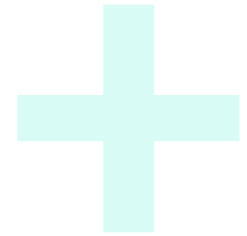


**Geographical,
Environmental,
Territorial and
Urban Planning**



**Government,
Public Security
and Justice**

SPECIALIZED TECHNICAL COMMITTEE OF THE
Sustainable Development
Goals of **Mexico**



GOBIERNO DE
MÉXICO

The background is a teal-tinted image showing several hands of different skin tones reaching towards the center, as if holding a globe. A large, semi-transparent gear graphic is overlaid on the right side of the image. The text 'SDGs Monitoring' is centered in the upper half of the image, with 'SDGs' in white and 'Monitoring' in dark teal.

SDGs Monitoring

Data

NEEDS TO BE



High-quality



Timely



Comparable



Accessible

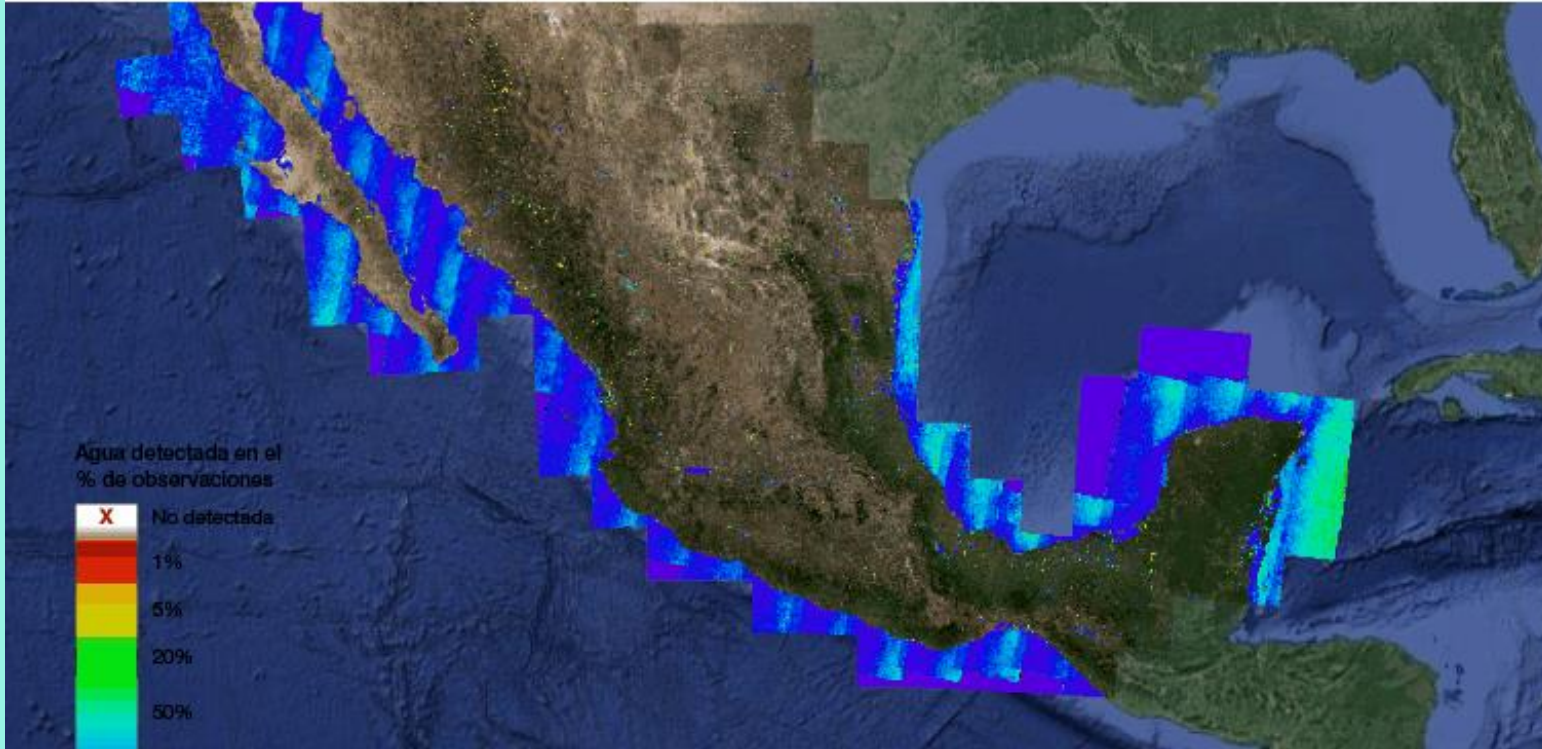


Alternative approaches to enhance accessibility to regular monitoring.

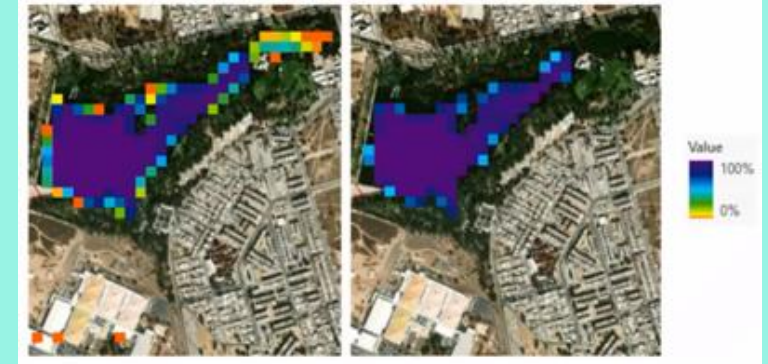


Accelerating the SDGs Monitoring





Pixel Filtro



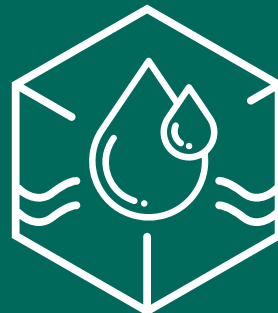
ICASE band 1 of 0

ICASE band 1 of 51

Statistics of the area



6 CLEAN WATER AND SANITATION



Landsat Index of Surface Water Classifications from Space



Statistical



Geospatial



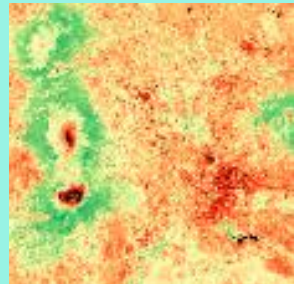
Analysis



Results

Highest proportion of open spaces to urban:

Tabasco
Mexico City
Colima



11 SUSTAINABLE CITIES AND COMMUNITIES



SDG 11.7.1: Average share of the built-up area of cities that is open space for public use

Annual cumulative precipitation map 1980-2021



Change in accumulated precipitation in the "El Vizcaino" area 1980-2021



Results

46.3 % Stable
24.4% Gained
25.3 % Lost

15 LIFE ON LAND



Finding gradients of change in selected **desertified areas**
SDG 15.3.1

A satellite with solar panels is shown in orbit above Earth. The image is overlaid with a teal gradient and a dark teal silhouette of a hand holding a pen. A white rectangular box is positioned on the left side of the image.

Conclusions

Acelerating the SDGs Monitoring





Thank you

Paloma Merodio Gómez

