



Our SDGs

17 goals to transform our world

Open and transparent progress towards the United Nations Sustainable Development Goals.



Welcome

The 2030 Agenda for Sustainable Development provides a shared blueprint for peace and prosperity. At its heart are 17 [Sustainable Development Goals \(SDGs\)](#), which are an urgent call for action by all countries to end poverty, protect the planet, and improve the lives and prospects of everyone, everywhere.

Launched in [insert date], this Sustainable Development Goals (SDGs) hub highlights progress our organization is making on these universal goals.

- Name, Title

ArcGIS Solution for the SDGs

Supporting Esri's commitment to the SDGs



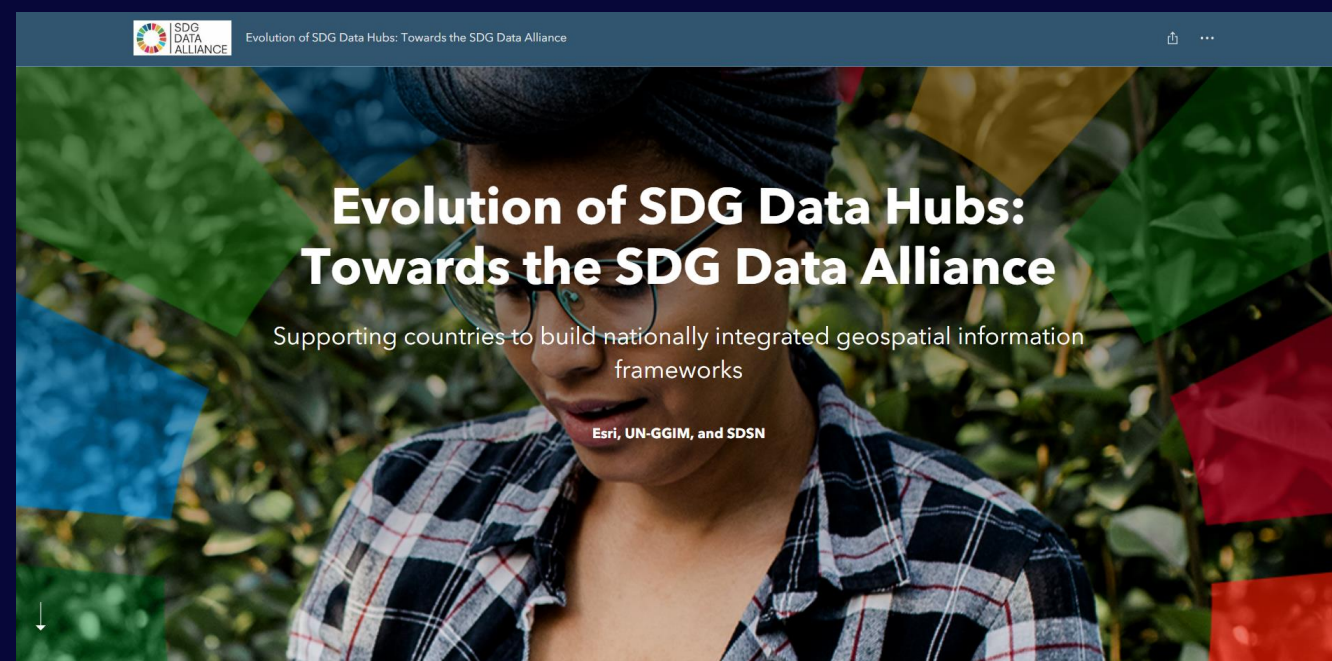
Purpose of Esri's SDG Initiatives

Democratize access to "timely, high-quality, and disaggregated data to drive targeted responses, help anticipate future needs, and shape needed actions" with geospatial context



Context

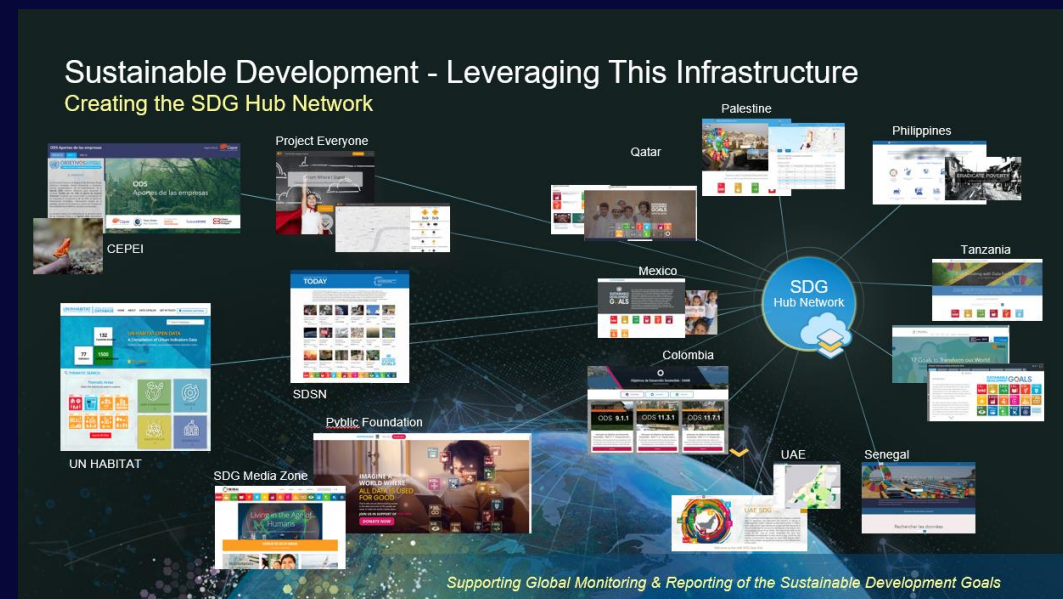
- ArcGIS Solution for SDGs launched on 15 Nov 2022
- Builds off earlier collaboration with UN and members states on the “Federated Information System for the SDGs” (FIS4SDGs) Research Exercise Guided by the SDG Data Alliance
- Supports:
 - Global Development Agencies
 - Governments
 - International Organizations
 - Nonprofits and NGOs
 - Academia
 - Private Sector





Esri's SDG Approach - Partnership Driven

- Multistakeholder Partnerships
 - SDG Data Alliance
 - Academic Partners - SDSN, University of Minnesota, Other Esri University Partners
- Nonprofit Organizations and NGOs
 - Sustainable Development Solutions Network (SDSN)
 - Local2030 Islands Network
- Development Agencies
 - United Nations
 - Development Banks
- Private Sector

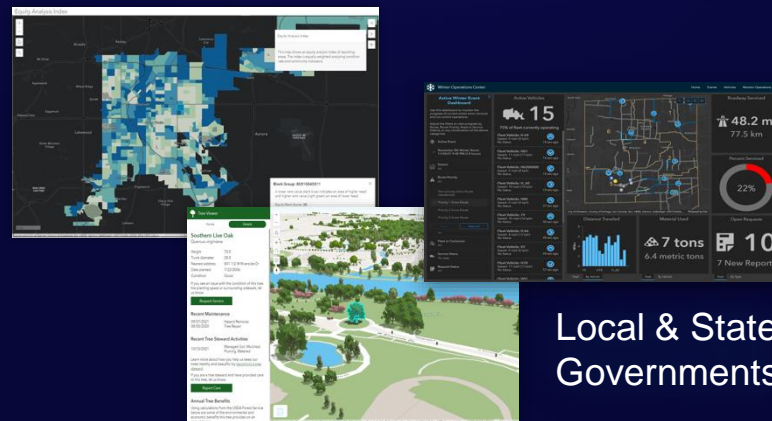




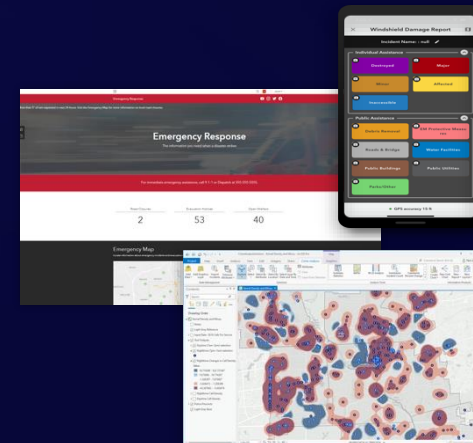
ArcGIS Solutions Ready-to-Use Applications and Configurations

Preconfigured

- Data Models
- Tools
- Apps
- Workflows
- Maps
- Initiatives
- Add-Ins
- Dashboards



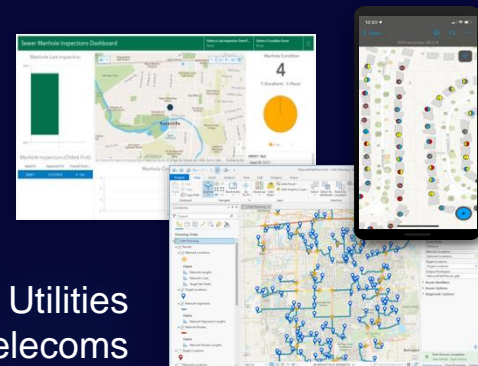
Local & State Governments



Emergency Management & Public Safety



Health & Human Services



Utilities & Telecoms



Defense & Security

Industries

- Land Records
- Planning and Development
- Public Works
- Emergency Management
- Utilities / Network Management
- Elections
- Natural Resources
- Conservation
- Transportation
- Defense
- Public Safety
- Telecommunications
- Health & Human Services

- Extensive (150+)
- Easy to Deploy
- Fully Supported
- ... Included as Part of ArcGIS

... Helping Organizations Quickly Realize Value



ArcGIS Solution for SDGs

KEY COMPONENTS

- Integrates Goal, Target, & Indicator ontology
- Thematic mapping preview
- SDG Indicator monitoring dashboard
- Community Engagement survey

RELATED APPLICATIONS

- VNR StoryMap
- Scorecard-style dashboard
- Indicator-level status reporting

The screenshot shows a web application interface for monitoring the 'No Poverty' SDG indicator. The main heading is 'What We Are Tracking'. Below this, it says 'Select an indicator below to explore progress we are making on this Sustainable Development Goal.' The indicator selected is 'Indicator 1.1.1: Proportion of the population living below the international poverty line by sex, age, employment status and geographic location (urban/rural)'. The dashboard displays a table of data for the United States, showing the percentage of the population living below the poverty line from 2012 to 2019. The table has columns for Year, Subcategory (18 to 64 years), and Value. The values range from 7% in 2019 to 13.4% in 2012. The interface also includes a sidebar with navigation options for 'Our SDGs' and 'What We Are Tracking', and a map view on the right side.

Year	Subcategory	Value
2019	18 to 64 years	7
2018	18 to 64 years	6.9
2017	18 to 64 years	7.3
2016	18 to 64 years	8.1
2015	18 to 64 years	8.4
2014	18 to 64 years	8.8
2013	18 to 64 years	9.6
2012	18 to 64 years	13.4

View the Solution on the [ArcGIS Solutions Gallery](#)



Sustainable Development Goals

Focused Maps and Apps





Solution Requirements

- ArcGIS Software requirement: **1 ArcGIS Online Creator** named user
- Basic knowledge of ArcGIS Online
- Basic knowledge of Microsoft Excel
- Basic knowledge of SDGs or related KPI frameworks

Learn more at...

<https://doc.arcgis.com/en/arcgis-solutions/latest/reference/introduction-to-sustainable-development-goals.htm>



SDG Data Hub Implementation Process

Plan

- Kickoff meeting about data hub
- Data agreements and support
- Form a project team
- Data Inventory and Data Gaps
- Capacity evaluation

Assess

- Assess priorities and availability of SDG data
- Assess skill level
- Data Preparation
- Pre-workshop online training
- Agree on data governance and sharing methodology

Build

- Convene technical workshop
- Build data hub prototype
- Launch data hub
- Promote data hub through various communication efforts
- Capacity Building

Sustain & Grow

- Add additional SDG goals
- Ongoing promotion of hub
- Operate and Maintain the Hub
- Identify long-term funding
- Collaboration with Partners
- Annual stakeholder meeting to evaluate data



Current State

Current State

Sustainable Development Goals

Deploy now | Share

Learn more about Sustainable Development Goals

Overview

Sustainable Development Goals can be used to share Development Goals, and their key indicators, with th

In 2015, the United Nations (UN) General Assembly's agenda establishes 17 Sustainable Development Goals planet, and ensure that by 2030 all people enjoy po climate change, and violent conflicts have wreaked t these crises and evaluating progress on resulting po investment in timely, high-quality, and disaggregate and shape urgently needed actions.

Digital Voluntary SDG Review [Year]

Feature Service to SDG Solution

Export data from a feature service to use in your SDG Solution

Add Layer | Select Layer | Configure | Filter | Preview | Export

County Health Rankings 2023 - County
County Health Rankings 2023 - State
County Health Rankings 2023 - Nation

SDG Indicator Code
HEALTH_RNK

Map Attribute Fields
Click to get geoid
geoid field set to 5-digit FIPS Code
Click to set value
value field set to State Ranking of Health Factors

Additional SDG Solution Values
Pre-populate SDG Solution Schema values for certain fields

Category: HEALTH
Subcategory: RANK
Year: 2023

Indicator	geoid	value	year	category	subcategory
1	HEALTH_RNK_01001	9	2023	HEALTH	RANK
2	HEALTH_RNK_01001	3	2023	HEALTH	RANK
3	HEALTH_RNK_01003	62	2023	HEALTH	RANK
4	HEALTH_RNK_01005	51	2023	HEALTH	RANK
5	HEALTH_RNK_01007	18	2023	HEALTH	RANK
6	HEALTH_RNK_01009	63	2023	HEALTH	RANK
7	HEALTH_RNK_01011	56	2023	HEALTH	RANK
8	HEALTH_RNK_01013	22	2023	HEALTH	RANK
9	HEALTH_RNK_01015	37	2023	HEALTH	RANK
10	HEALTH_RNK_01017	35	2023	HEALTH	RANK
11	HEALTH_RNK_01019				

- Solution for the Sustainable Development Goals
 - An ArcGIS Solution supported in Online & Enterprise
 - Bring your own data & geography
- Voluntary Local/National Review (VL/NR) StoryMap Template
 - Get up and running with a StoryMap template to present on your progress on the SDGs
- Feature Service to SDG Schema Web App
 - Convert any feature service in ArcGIS to the required schema for the SDG Solution
 - Fast Data ETL from any feature service



Feature Layer to SDG Solution

The screenshot displays the 'Browse Feature Layers' interface. At the top, there is a search bar with the text 'Living Atlas' and a search query 'india production'. Below the search bar, a list of feature layers is shown. The first layer is 'India: Fruit Production (2019-20)', which is selected. The left sidebar provides details for this layer, including a summary, status (Living Atlas and Subscriber), owner (Esri India), sharing settings (Everyone (public)), and item update date (Oct 22, 2021). The main area shows a list of search results for 'india production', including 'India: Growth of Net State Domestic Product At Current Prices (2012-21)', 'India: Fruit Production (2019-20)', 'India: Production of Major Minerals Specified under MCDR Act (2018-21)', and 'India: Major Crops Production (2011-21)'. Each result includes a thumbnail map, the Esri India logo, and options to 'Open in Map Viewer' or view 'Item Details'. A 'Close' button is located at the bottom right of the interface.

Convert any feature service to the required schema for the SDG Solution



Feature Layer to SDG Solution

Feature Service to SDG Solution
Export data from a feature service to drop into your SDG Solution

Report an Issue Adam Pfister
apfister_sdg

Select Layer
If your layer has multiple sublayers, select one

India: Fruit Production (2019-20) - Fruit Production 2019-20

SDG Indicator Code
Enter in your SDG Indicator Code

2.1.1

Map Attribute Fields
Select the fields in your feature service to the required SDG Solution schema fields

Replace field	
geoid field	objectId (objectId)
value field	State (state)
Additional Pre-processed fields	Country (country)
Category	Item (item)
Subcategory	Fruit Cultivation Area (Ha) (area_ha)
Year	Production (MT) (production_mt)
Add A Select	shape (shape)
	indiadata.sde.IN_ST_FruitProduction_2019_20.area (indiadata.sde.IN_ST_FruitProduction_2019_20.area)

Cancel

India: Fruit Production (2019-20) - Fruit Production 2019-20:

Country	India
Fruit Cultivation Area (Ha)	385.69
indiadata.sde.IN_ST_FruitProduction_2019_20.area	308,255.29
Item	Fruits
Production (MT)	7,916.39
State	Madhya Pradesh

Convert any feature service to the required schema for the SDG Solution



Feature Layer to SDG Solution

Feature Service to SDG Solution
Export data from a feature service to drop into your SDG Solution

Report an Issue Adam Pfister
apfister_sdg

Select Layer
If your layer has multiple sublayers, select one

India: Fruit Production (2019-20) - Fruit Production 2019-20

SDG Indicator Code
Enter in your SDG Indicator Code

2.1.1

Map Attribute Fields
Select the fields in your feature service to the required SDG Solution schema fields

Replace field

geoid field	objectId (objectId)
	State (state)
Add Pre-processed fields	Country (country)
	Item (item)
Category	Fruit Cultivation Area (Ha) (area_ha)
Subcategory	Production (MT) (production_mt)
Year	shape (shape)
Add A Select	indiadata.sde.IN_ST_FruitProduction_2019_20.area (indiadata.sde.IN_ST_FruitProduction_2019_20.area)

Cancel

India: Fruit Production (2019-20) - Fruit Production 2019-20:

Country	India
Fruit Cultivation Area (Ha)	385.69
indiadata.sde.IN_ST_FruitProduction_2019_20.area	308,255.29
Item	Fruits
Production (MT)	7,916.39
State	Madhya Pradesh

Convert any feature service to the required schema for the SDG Solution



Feature Layer to SDG Solution

Feature Service to SDG Solution
Export data from a feature service to drop into your SDG Solution

Report an Issue Adam Pfister
apfister_sdg

Select Layer
If your layer has multiple sublayers, select one

India: Fruit Production (2019-20) - Fruit Production 2019-20

SDG Indicator Code
Enter in your SDG Indicator Code

2.1.1

Map Attribute Fields
Select the fields in your feature service to the required SDG Solution schema fields

Click to set geoid

geoid field set to State

Click to set value

value field set to Production (MT)

Additional SDG Solution Values
Pre-populate SDG Solution Schema values for certain fields

Category: Fruits

Subcategory: All

Year: 2020

Add Additional Attribute Fields
Select any additional fields to include in the export

Export Preview (Total: 36 | Selection: 0)

indicator	geoid	value	year	category
2.1.1	Kerala	1,731.44	2020	Fruits
2.1.1	Goa		2020	Fruits
2.1.1	Mizoram	344.91	2020	Fruits
2.1.1	Odisha	1,917.07	2020	Fruits
2.1.1	Karnataka	7,055.4	2020	Fruits
2.1.1	Sikkim	55.45	2020	Fruits
2.1.1	West Bengal	3,614.14	2020	Fruits
2.1.1	Nagaland	315.05	2020	Fruits
2.1.1	Meghalaya	393.51	2020	Fruits
2.1.1	Arunachal Pradesh	125.84	2020	Fruits
2.1.1	Tamil Nadu	5,662.37	2020	Fruits
2.1.1	Jharkhand	1,148.11	2020	Fruits
2.1.1	Assam	2,562.3	2020	Fruits

India: Fruit Production (2019-20) - Fruit Production 2019-20:

Country	India
Fruit Cultivation Area (Ha)	385.69
indiadata.sde.IN_ST_FruitProduction_2019_20.area	308,255.29
Item	Fruits
Production (MT)	7,916.39
State	Madhya Pradesh

Convert any feature service to the required schema for the SDG Solution



Feature Layer to SDG Solution

Feature Service to SDG Solution
Export data from a feature service to drop into your SDG Solution

Report an Issue | Adam Pfister | apfister_sdg

Add Layer | Select Layer
If your layer has multiple sublayers, select one

India: Fruit Production (2019-20) - Fruit Production 2019-20

Home | Insert | Draw | Page Layout | Formulas | Data | Review | View | Tell me | Comments | Share

Indicator	geoid	value	year	category	subcategory
2.1.1	Kerala	1731.44	2020	Fruits	All
2.1.1	Goa	527.92	2020	Fruits	All
2.1.1	Mizoram	344.91	2020	Fruits	All
2.1.1	Odisha	1917.07	2020	Fruits	All
2.1.1	Karnataka	7055.4	2020	Fruits	All
2.1.1	Sikkim	55.45	2020	Fruits	All
2.1.1	West Bengal	3614.14	2020	Fruits	All
2.1.1	Nagaland	315.05	2020	Fruits	All
2.1.1	Meghalaya	393.51	2020	Fruits	All
2.1.1	Arunachal Pradesh	125.84	2020	Fruits	All
2.1.1	Tamil Nadu	5662.37	2020	Fruits	All
2.1.1	Jharkhand	1148.11	2020	Fruits	All
2.1.1	Assam	2562.3	2020	Fruits	All
2.1.1	Tripura	562.46	2020	Fruits	All
2.1.1	Manipur	527.97	2020	Fruits	All
2.1.1	Chhattisgarh	2480.64	2020	Fruits	All
2.1.1	Gujarat	9253.75	2020	Fruits	All
2.1.1	Bihar	4256.21	2020	Fruits	All
2.1.1	Punjab	2106.12	2020	Fruits	All
2.1.1	Haryana	1197.97	2020	Fruits	All
2.1.1	Uttar Pradesh	10952.73	2020	Fruits	All
2.1.1	Ladakh	2020	2020	Fruits	All
2.1.1	Jammu And Kashmir	2541.16	2020	Fruits	All
2.1.1	Rajasthan	1004.6	2020	Fruits	All
2.1.1	Delhi	2020	2020	Fruits	All
2.1.1	Madhya Pradesh	7916.39	2020	Fruits	All

India: Fruit Production (2019-20) - Fruit Production 2019-20

Country	India
Fruit Cultivation Area (Ha)	385.69
indiatdata.sde.IN_ST_FruitProduction_2019_20.area	308,255.29
Item	Fruits
Production (MT)	7,916.39
State	Madhya Pradesh

Export Preview (Total: 36 | Selection: 0)

indicator	geoid	value	year	category
2.1.1	Kerala	1,731.44	2020	Fruits
2.1.1	Goa	527.92	2020	Fruits
2.1.1	Mizoram	344.91	2020	Fruits
2.1.1	Odisha	1,917.07	2020	Fruits
2.1.1	Karnataka	7,055.4	2020	Fruits
2.1.1	Sikkim	55.45	2020	Fruits
2.1.1	West Bengal	3,614.14	2020	Fruits
2.1.1	Nagaland	315.05	2020	Fruits
2.1.1	Meghalaya	393.51	2020	Fruits
2.1.1	Arunachal Pradesh	125.84	2020	Fruits
2.1.1	Tamil Nadu	5,662.37	2020	Fruits
2.1.1	Jharkhand	1,148.11	2020	Fruits
2.1.1	Assam	2,562.3	2020	Fruits

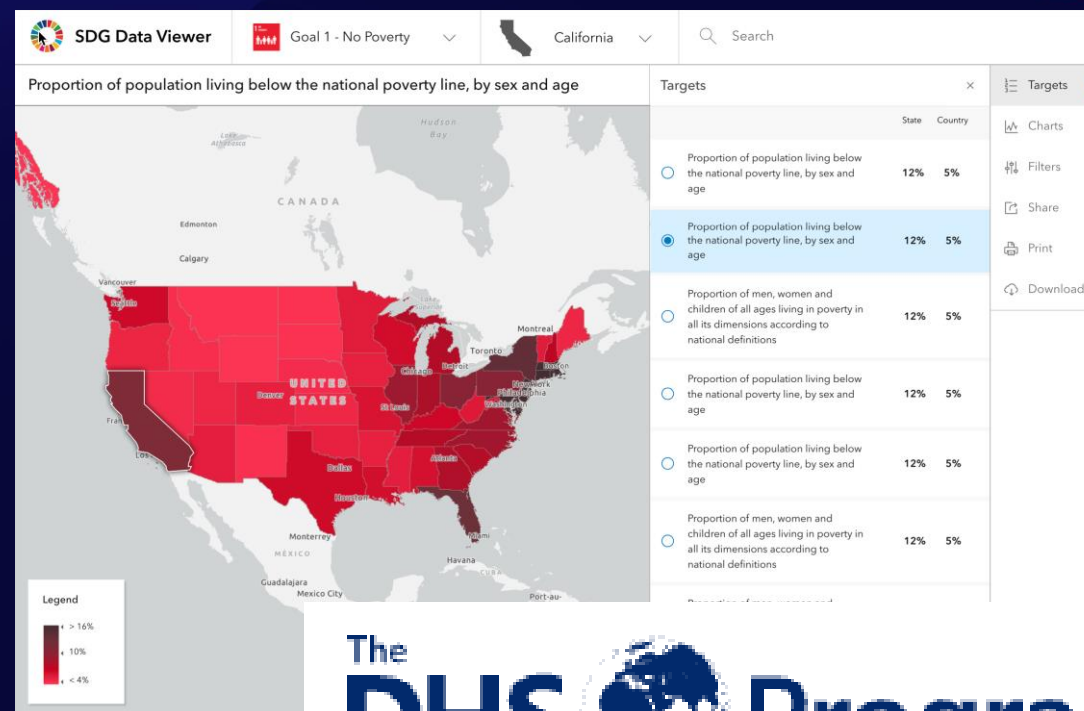
Convert any feature service to the required schema for the SDG Solution



Looking ahead

Looking Ahead

- Dynamic Mapping Visualization Web app
 - Easily configured to work with the SDG Solution schema
 - Immediate visualization of indicators, categories, and subcategories
 - Open Source & minimal setup as a target
- USAID DHS to SDG Data Schema ETL
 - Similar to Feature Service to SDG Schema web app
- Executive Briefing Application
- Solutions for Development Planning and Decision-Making
- Calculating SDG Indicators
 - Making use of the large catalogs of data
- Innovations...



The DHS Program
Demographic and Health Surveys

ArcGIS StoryMaps
Briefings



SDG
DATA
ALLIANCE

Charles Brigham
cbrigham@esri.com



esri[®]

THE
SCIENCE
OF
WHERE[®]

The background features a stylized globe in shades of green and blue, partially obscured by several thick, overlapping, curved bands in purple and blue. To the right, there is a vertical gradient from orange to purple, overlaid with a pattern of small, semi-transparent squares in various colors, suggesting a data visualization or map overlay.

ArcGIS Solution for the SDGs

Demonstration