

kadaster



Paula Dijkstra, 19 May 2022

Leveraging FELA

Sharing examples from
the Netherlands

Every human on earth is part of the solution



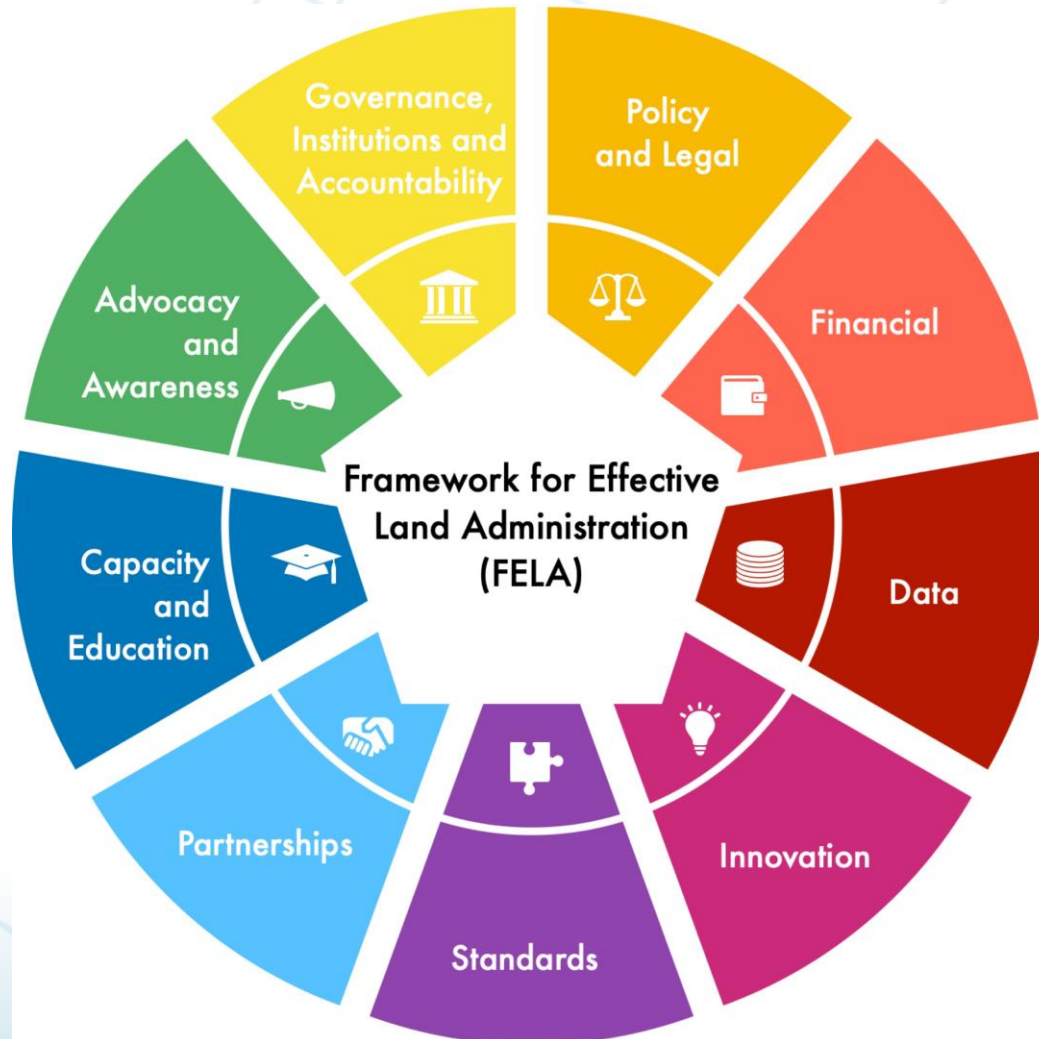
The **LAZY PERSON'S**

= guide to

SAVING the WORLD



Assessment Multi-annual Year Plan & FELA



The Netherlands

Area: 41,543 km²

Population : 17,3 million (density 417/
km²)

Bikes: 22 million (~1000 km / year)

60% population lives 5m below sealevel





Mission Kadaster

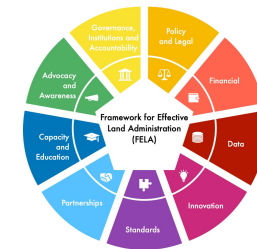
As an independent body, Kadaster provides certainty with transparency regarding ownership and the use of property and space. This provides an important basis for economy and contributes to prosperity. On a daily basis. We provide overview and support in decision making. In the Netherlands and abroad.



vision Kadaster

**Making reliable data accessible to everyone. Through a single digital gateway.
That is our job, by connecting and providing certainty.
When data from different sources is combined, valuable insight is generated
offering solutions for challenges in society. Our contribution to
a sustainable and livable society. In the Netherlands and abroad.**

I: Governance, Institutions and Accountability



Clear governance models

Leadership

Institutional structures

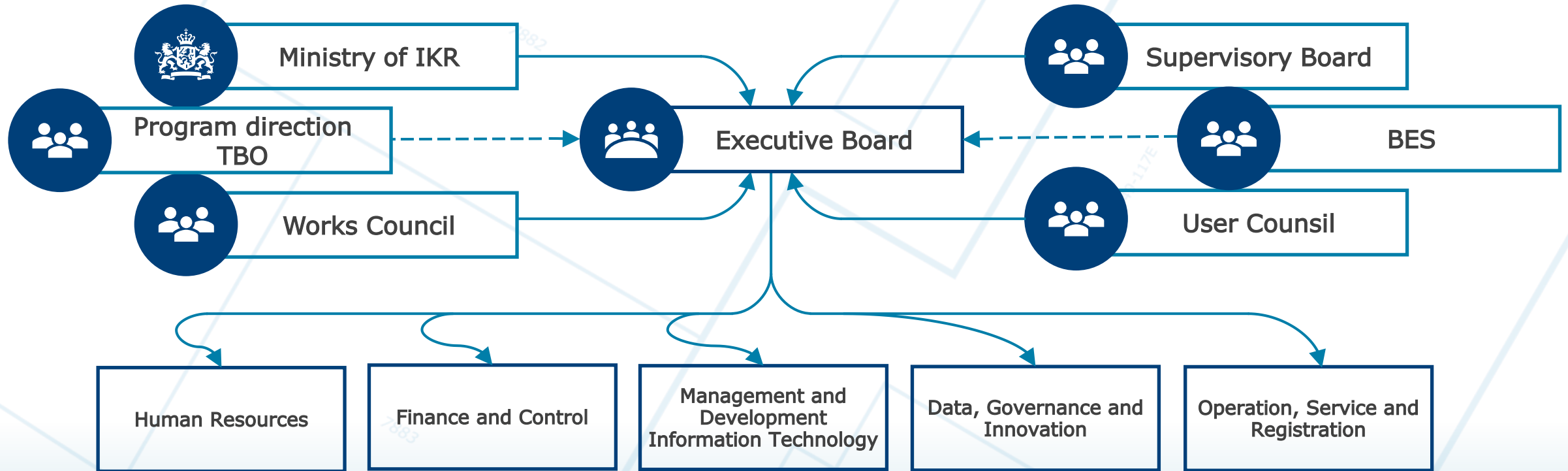
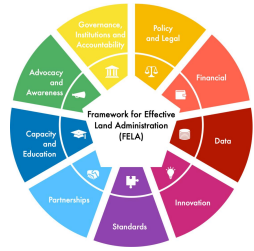
Clear value proposition

Institutional mandates for land administration

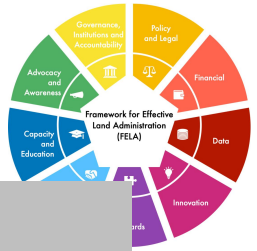
Political endorsement

Enforce accountability and transparency for procedures, metrics and indicators

Governance model of Kadaster



Building blocks to determine course of Kadaster



Core values

Mission

As an independent body, Kadaster provides certainty with transparency regarding ownership and the use of property and space. This provides an important basis for economy and contributes to prosperity. On a daily basis. We provide overview and support in decision making. In the Netherlands and abroad.

Legal Framework

Vision

Making reliable data accessible to everyone. Through single digital gateway. That is our job, by connecting and providing certainty.

When data from different sources is combined, valuable insight is generated offering solutions for challenges in society. Our contribution to a sustainable and livable society. In the Netherlands and abroad.

- to offer certainty in land ownership, the use of everything on and under the ground;
- to provide the platform that allows anyone to work with geo-information always and everywhere; and
- to be a partner for the use of geo-information as an indispensable link on social issues, both in the Netherlands and abroad.



Strategy

Strategic context

Focal Points

Strategic Principles



Strategic Exploration

Conditions

Long term policy plan

MBP

Continuity

Business Operations

Finances

Current Strategic Developments

Year Plan

Year Plan

Employees, users, and partners

II: Policy & Legal

Policy Framework

Legal Framework

Available

Accessible

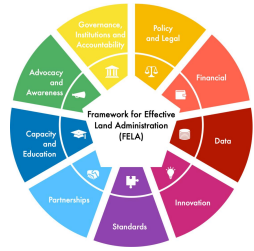
Inclusive

Participative

Gender Responsive

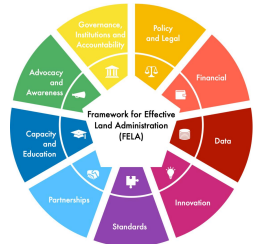
Minority Responsive

Transparant



Digital Government Agenda & System of Key Registries

National Spatial Planning Policy (NOVI)



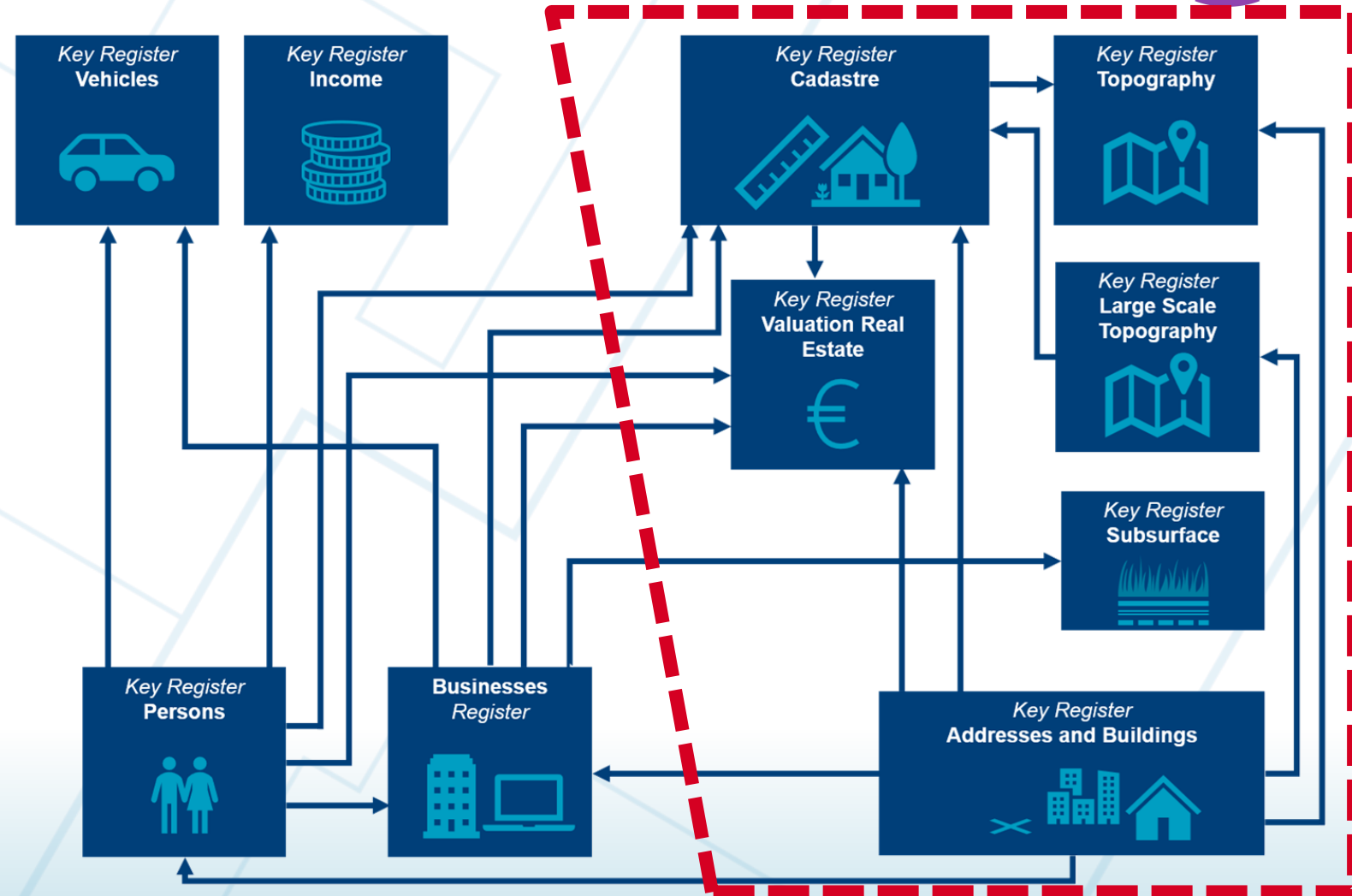
NL DIGIbeter



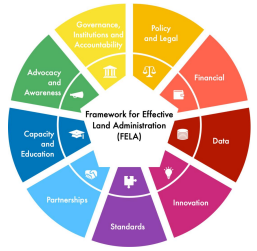
 Rijksoverheid

National Strategy on Spatial Planning and the Environment

A sustainable perspective for our living environment



III: Financial



Establishment & Management of costs

Financial Benefits

Revenue generation tool

Business Model

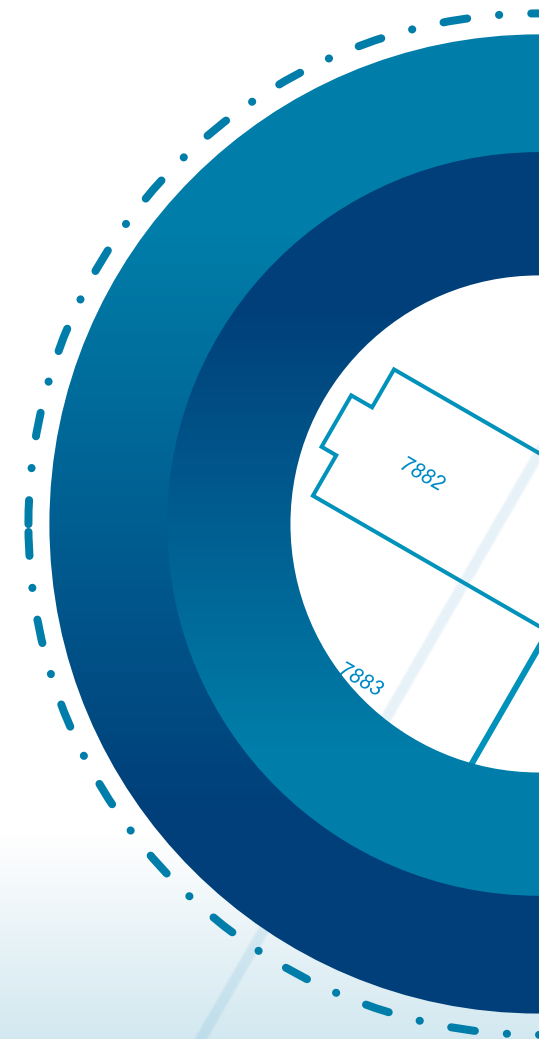
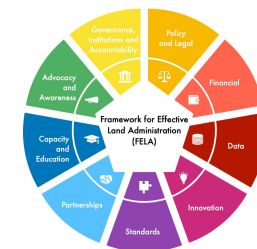
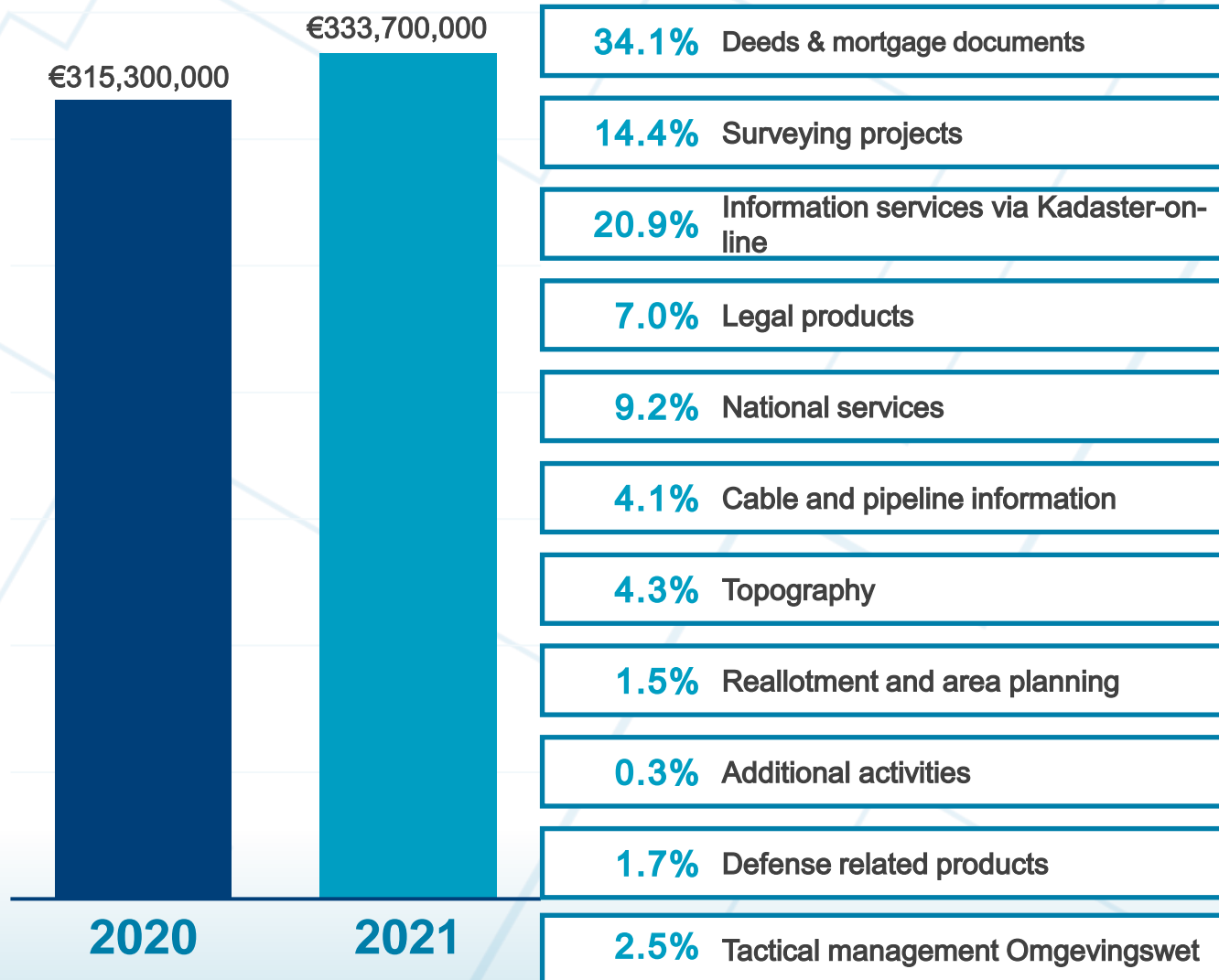
Sustainable economy

Economic Justice

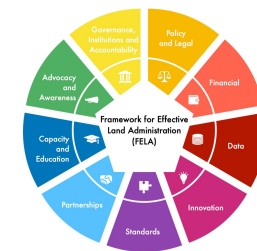
Tools:

- CoFLAS
- LBF
- PPP
- IFC
- Valuation of Unregistered Land

Total revenue



IV: Data



Fundamental data themes

land tenure

Guidelines for data collection,
curation, management, delivery

land use

Integrated geospatial information

land value

Availability, accessibility,
interoperability

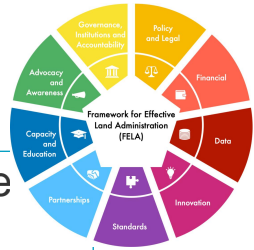
land development

VGGTs, NUA, INSPIRE & FFPLA
guidelines

LADM ISO 19152 / IHO S-121

Managing 160 open datasets / 10 petabyte of data

Guiding data principles at Kadaster



1. We understand each other thanks to the same **language**



2. The **responsibilities** for data and processes are separated.



3. We collect, store, edit, validate and share information **reliably** and securely.



4. We respect **privacy** and give individuals insight into and, where possible, control over the information we hold about them and to whom we provide their data.



5. All **employees** have the necessary knowledge for their work of the possibilities of data and the requirements that are set for working with data.



6. We identify and manage which **standards** we apply (open world standards, mandatory standards and where necessary de facto standards).



7. We record data relating to an object in **one place** and update it in coherence.



8. We store **process data** from our processes



9. We are **transparent** about what data we keep, where the data comes from and how it was created (including algorithms).



10. We make the **coherence** of data transparent.



11. We manage our **derivation** logic transparently and unambiguously.



12. Internal data structures are **decoupled** from the information model in which the data is made available.

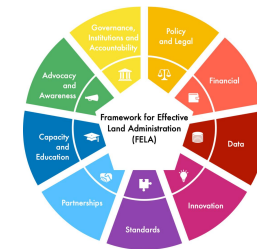


13. We use data from the **source** ourselves and encourage the use by our customers of data from the source.



14. We publish data as **open data** when this is legally possible.

V: Innovation



Evolving technologies

Process improvement

Bridge digital divide

Societal pull

Data protection & ethics

Continuum of Land Rights

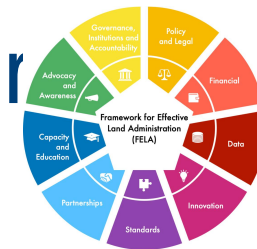
Fit for Purpose Land Administration

Responsible Land Administration

3D data, AI, crowdsourced data,
blockchain, change detection, big
data analytics



Innovation Board & Emerging Technology Center



Sensors

There are a lot of sensors in the public space and in the future there will be more. Kadaster conducted a pilot to register sensors and provide access to sensor data.



Multi-dimensional object registration

3D map information supports governments with:

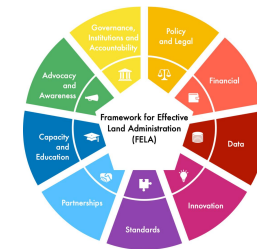
- Noise calculations near motorways
- Sun, shade and wind analyses
- Air quality simulations.



Rebuilding the Cadastral Map (KKN)

We are rebuilding the Cadastral Map based on our existing survey data. This enables a (more) accurate boundary and surface capture.

VI: Standards



Global Development Agenda

through SDG's & indicators

Interoperability (legal, semantic,
technical)

Continuum of Land Rights

Global Geodetic Reference Frame

INSPIRE, Cadastre 2014, LGAF

LADM / STDM

The diagram is a circular framework with 11 segments, each representing a key component of the FELA. The segments are arranged in a circle around a central hub. The components and their corresponding icons are:

- Policy and Legal** (Yellow segment, top right): Scales of justice icon.
- Financial** (Red segment, right): Banknote icon.
- Data** (Dark red segment, bottom right): Database icon.
- Innovation** (Purple segment, bottom): Lightbulb icon.
- Standards** (Dark purple segment, bottom left): Checklist icon.
- Partnerships** (Blue segment, left): Two people shaking hands icon.
- Capacity and Education** (Light blue segment, top left): Graduation cap icon.
- Advocacy and Awareness** (Green segment, top): Megaphone icon.
- Governance, Institutions and Accountability** (Light green segment, top): Building icon.
- Regulatory and Legal** (Yellow segment, top right): Scales of justice icon.

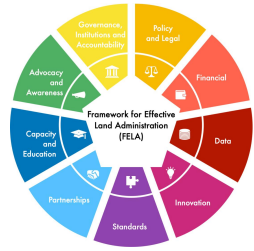
The central hub contains the text: **Framework for Effective Land Administration (FELA)**.



Expected at FIG Congress 2022:
LADM in the class room – Making the Land Administration Domain Model broader accessible
 By: School of Land Administration Studies (ITC UTwente & Kadaster) Andre da Silva Mano; Malumbo Chipofya; Christiaan Lemmen.

FIG UN HABITAT GLOBAL LAND TOOL NETWORK

VII: Partnerships



Cross sector cooperation

Interdisciplinary cooperation

Trust

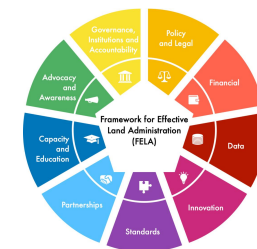
Strategic alliance

Shared value

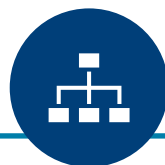
**Participatory land administration
processes**

**Role of non governmental actors in
creation, collection, storage and
dissemination of land
administration**

Our customers, represented in our user council



Government



Notaries



Real estate agencies



Citizens



Insurers



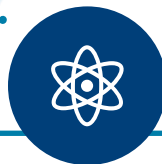
Housing associations



Commercial parties



Financial institutions



Energy companies



Waterboards

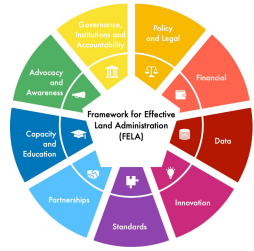


Provinces / Municipalities



Open data users

VII: Capacity and Education



Empower individuals, leaders,
organisations, societies

Improving competencies and skills

Life long learning

Understanding of geospatial
concepts and tools

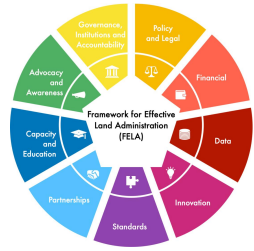
Primary, secondary, tertiary,
graduate level

MOOCs

Curriculum development

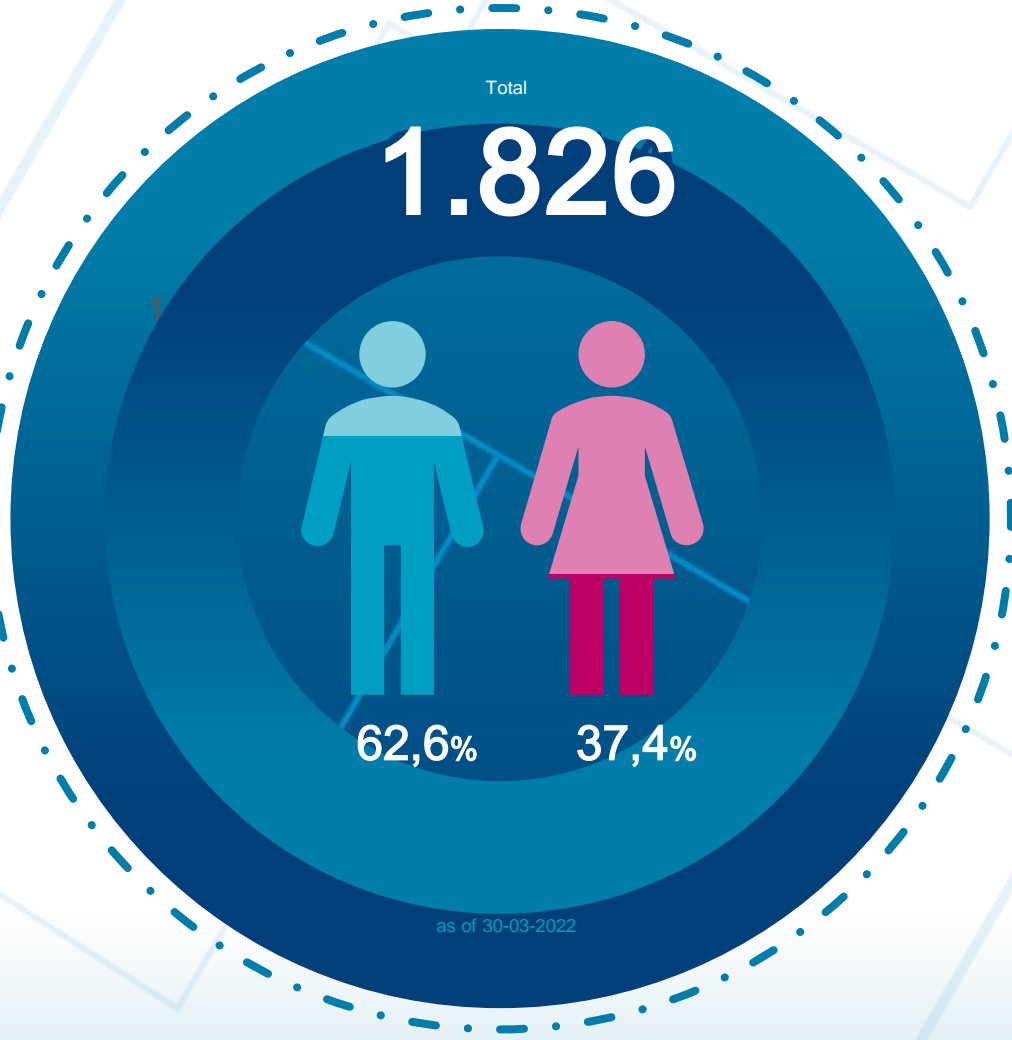
Grass root surveyors

Ensuring a vital & agile organisation



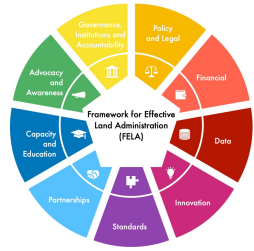
Challenge to ensure a pipeline of Talent:

- Own training programme for surveyors
- Kadaster Academy
- Traineeship
- Attention for well being of the employees
(flexible hours, promoting healthy choices,
own training budget)



as of 30-03-2022

IX: Advocacy and Awareness



Stakeholder acceptance

Societal support

Integral approach

Involve all land stakeholders

(communities, CSO's, NGO's,
private, academic, government)

Concepts and tools of UN Habitat,
FAO, ABLOS97, FIG



Our responsibility to
Manage our world

Achieve the SDG's

Strengthen our institutions

Share knowledge

Work together

Create impact

Leave no one behind

