

Implementing the Framework for Effective Land Administration (FELA)

International Seminar on United Nations Global Geospatial Information
Management “Effective Land Administration”

19th May 2022, Singapore

Presentation is based on documents and presentations from UN-GGIM and EuroSDR

<https://ggim.un.org>; <http://www.eurosdrr.net>

Presented by: Eva-Maria Unger, Kadaster, the Netherlands
Rohan Bennett, Kadaster, the Netherlands



UN-GGIM

United Nations Committee of Experts on
Global Geospatial Information Management

Expert Group on
Land Administration and Management

Positioning geospatial information to address global challenges

ggim.un.org

Effective land administration ensures preparedness and resilience, participatory and inclusive land use planning, monitoring of land-cover change, sustainable resource management, building back better, and the protection of our planet's natural resources and environment for future generations.

Sustainable Development

PLANET



Protect our planet's natural resources and climate for future generations

PEOPLE



End poverty and hunger in all forms and ensure dignity and equality

Effective land administration supports poverty eradication, food security, and can support ensuring dignity and equality through documenting, recording and recognizing people to land relationships in all forms, notwithstanding the potential to undermine dignity when the information is misused.

PROSPERITY



Ensure prosperous and fulfilling lives in harmony with nature

Effective land administration enables access to tenure security and efficient land markets fostering prosperity, wellbeing of all communities, revenues for authorities, and fulfilled lives through sustainable land management, land use, land development and land markets.

PEACE



Foster peaceful, just and inclusive societies

Effective land administration prevents land-related conflicts, stabilizes situations and fosters peaceful, just and inclusive societies

PARTNERSHIP



Implement the agenda through a solid global partnership

Effective land administration enables partnerships at all levels – international, regional, national and community – bringing together diverse but interoperable and complementary capabilities, experiences, technologies, integrated data, knowledge and resources.

supports

Land Policy

Land Tenure

Land Value

Integrated Geospatial Information

Land Development

Land Use

demands

Effective Land Administration



UN-GGIM

United Nations Committee of Experts on
Global Geospatial Information Management

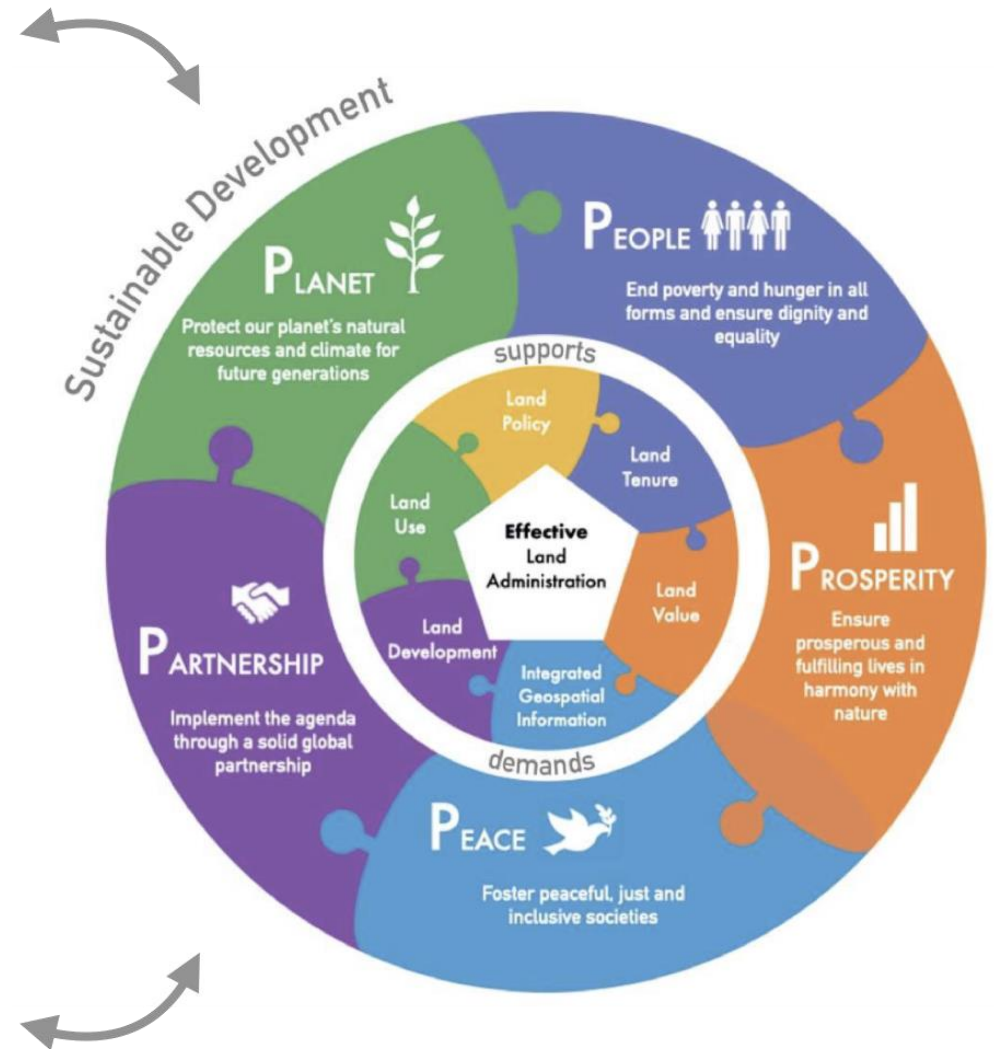
Expert Group on
Land Administration and Management

Positioning geospatial information to address global challenges

ggim.un.org

Effective land administration caters to all people, and must:

- 💡 Develop confidence and *trust*, promote *security, safety, peace* and *peace building*;
- 💡 Accelerate the proportion of population with *tenure security*;
- 💡 Allow *economic development* by supporting land value capture revenue systems that are equitable and transparent;
- 💡 Strengthen *multi-disciplinary* and *multi-sectoral participation* to achieve integrated geospatial information;
- 💡 Contribute to *smart* and *resilient rural* and *urban societies*, with equitable spatial/land use planning, and land development;
- 💡 Ensure *participatory* and *inclusive* land use, and land use planning;
- 💡 Promote the recognition of the *inherent rights of indigenous and vulnerable peoples* to their lands, territories and resources, and *recognise collective traditions, customs and customary tenures*, consistent with existing obligations under national and international law;
- 💡 Encourage *efficient, sustainable and fair land markets*, where appropriate, that take into account land tenure, value, use and land development aspects;
- 💡 Cater to *all* circumstances, situations and people – in times of *peace and prosperity*, in times of *stress and hardship* (including disaster and conflicts, forced migration and human displacement, poverty, food and water scarcity);
- 💡 Enable *partnership, bringing and building together knowledge, skills and experiences* on land tenure, land value, land use and land development; and
- 💡 Promote *preparedness and resilience* on climate change issues and support biodiversity, conservation and ecosystem sustainability.



Implementing the Framework for Effective Land Administration

EuroSDR with the support of UN-GGIM Europe and the UN-GGIM EG-LAM, initiated a small project in Summer 2021 to raise awareness of the merits and benefits of effective land administration and share knowledge and experience leveraging the FELA as the overarching policy guidance.



- Joep Crompvoets, KU Leuven, Belgium
- Anka Lisec, University of Ljubljana, Slovenia
- Frédéric Cantat, IGN, France
- Eva-Maria Unger, Kadaster, the Netherlands
- Rohan Bennett, Kadaster, the Netherlands



UN-GGIM

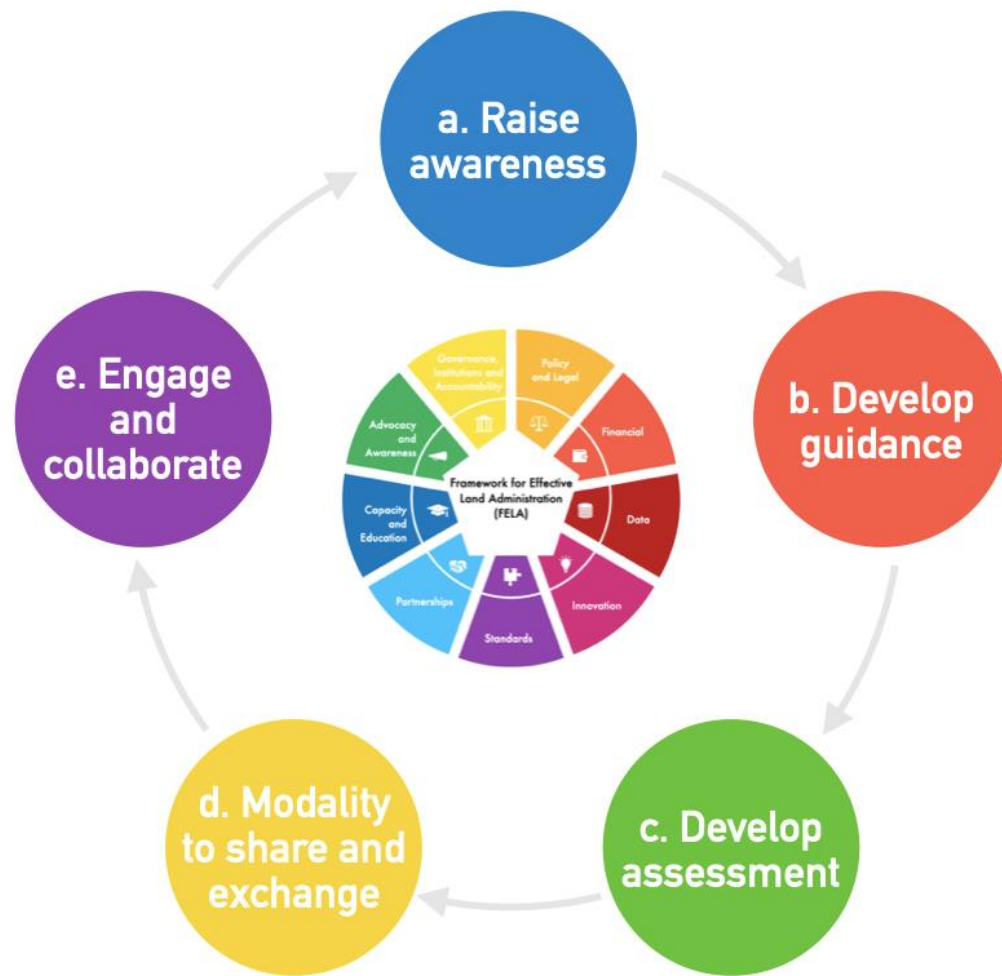
United Nations Committee of Experts on
Global Geospatial Information Management

Expert Group on
Land Administration and Management

Positioning geospatial information to address global challenges

ggim.un.org

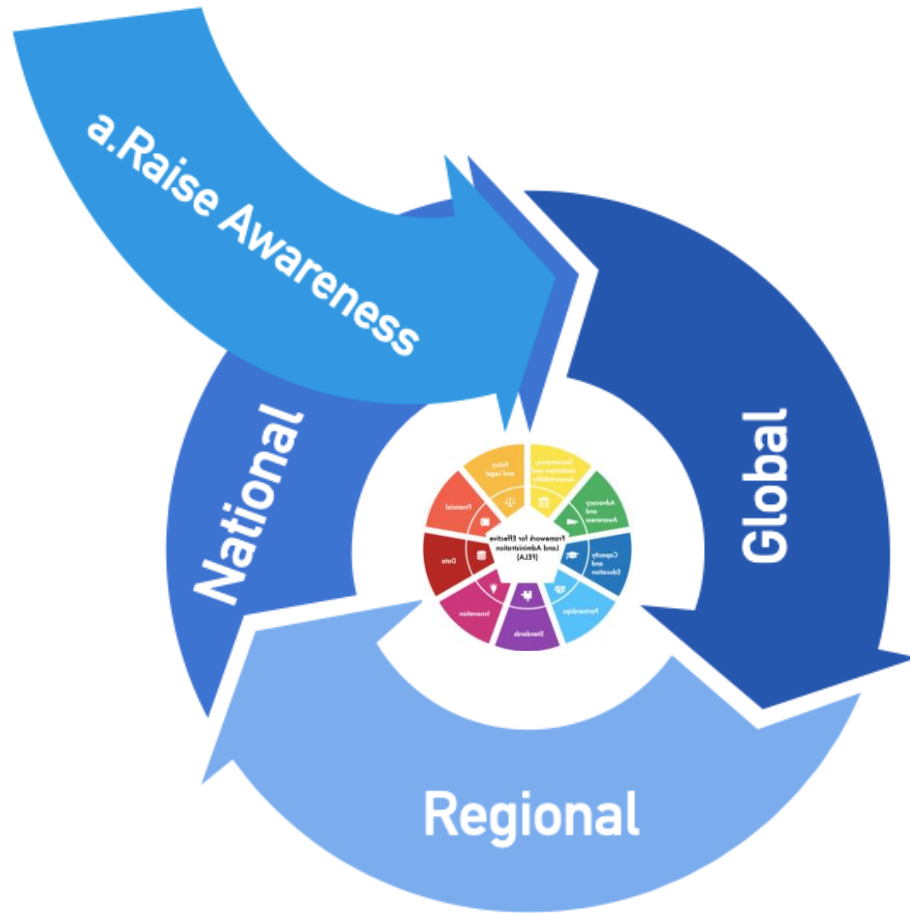
Implementing the Framework for Effective Land Administration



- a. Raise awareness and promote the usefulness of the FELA;
- b. Develop guidance to implement the FELA utilising the IGIF Implementation Guide;
- c. Develop an assessment mechanism to support the implementation of the FELA;
- d. Share and exchange knowledge, information, use cases, practices, experiences and examples; and
- e. Engage and collaborate with regional committees, in particular, UN-GGIM: Africa



Implementing the Framework for Effective Land Administration



Global

- Collate and disseminate examples, use cases, good practices
- Organise international seminars, forums and workshops etc.

Regional

- Engage regional committees of UN-GGIM
- Contribute to regional and sub-regional engagement and activities

National

- Get FELA onto agenda of donor projects/local agencies
- Dialogue through projects with other lar
- Get 'buy in' from policy-makers and poli



UN-GGIM

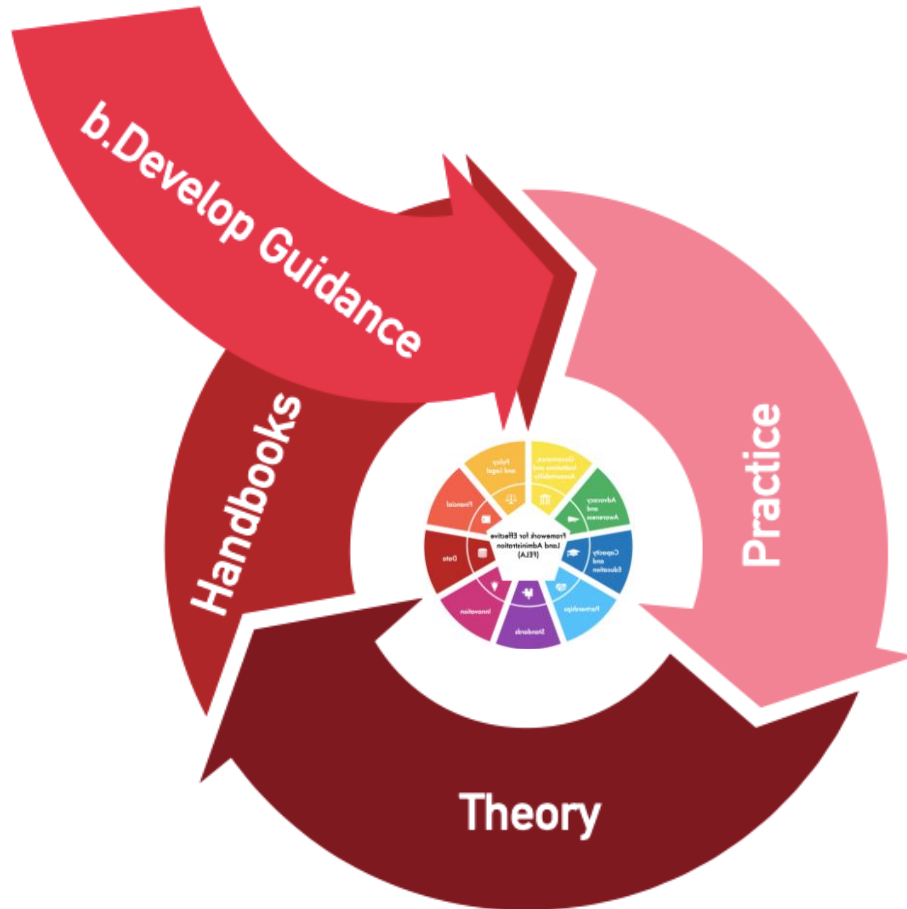
United Nations Committee of Experts on
Global Geospatial Information Management

Expert Group on
Land Administration and Management

Positioning geospatial information to address global challenges

ggim.un.org

Implementing the Framework for Effective Land Administration



✂ Practice

- Online platform with FELA as overarching framework
- Direct links to existing and globally recognized tools
- Provide forum for practitioners

💡 Theory

- Involve academic and research institutions
- Engage with other relevant domains (environmental etc.)

📖 Handbooks

- Develop handbooks and checklists based on in-country experiences



Implementing the Framework for Effective Land Administration



Principles

- Elaborate guiding principles relevant to national circumstances

** No intention to measure and rank one over another*

Approaches

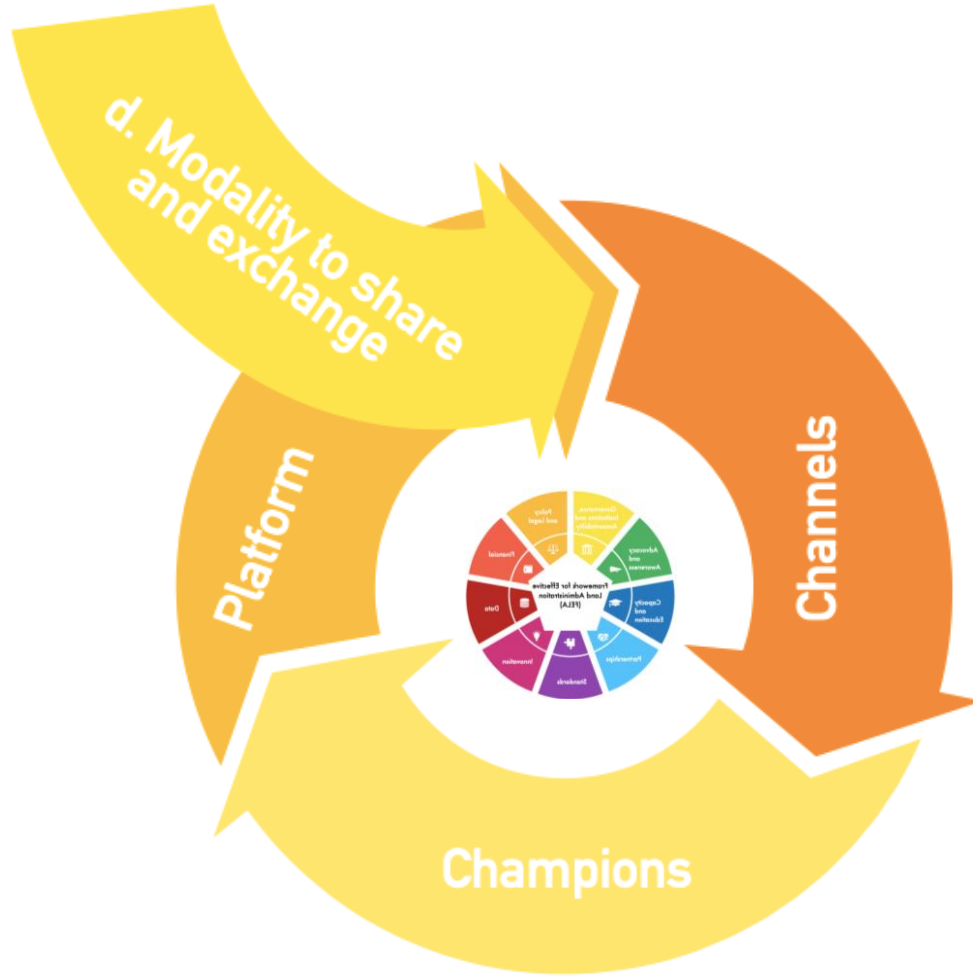
- 'No one size fits all'
- A suite of approaches that can be tailored to national circumstances for implementation
- Guidance to evaluate options according to country context

Tools

- Develop 'light weight' resource materials, references or tool – keeping in mind country context



Implementing the Framework for Effective Land Administration



Channels

- Identify available and required channels
- Formal and Informal
- Strategic messages and value propositions

Champions

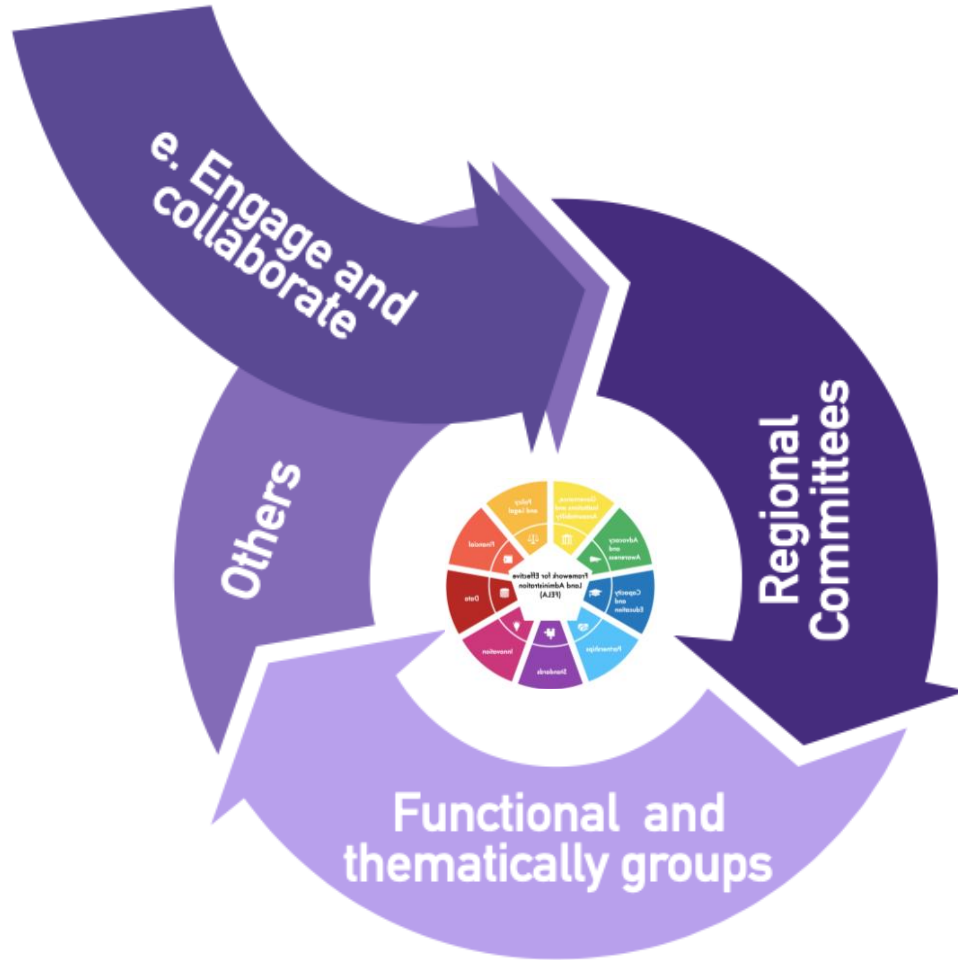
- Identify national and local champions
- Ensure those champions share and exchange experiences and lessons learnt

Platform

- Use mechanisms/platforms which are affordable and inclusive



Implementing the Framework for Effective Land Administration



Regional Committees

- WG of Regional Committees
- Regional training and research institutes



Functional and thematical groups

- Standards development organizations



Others

- Civil society
- International and Regional Development organizations (donors)
- Philanthropic entities



UN-GGIM

United Nations Committee of Experts on
Global Geospatial Information Management

Expert Group on
Land Administration and Management

Positioning geospatial information to address global challenges

ggim.un.org



Implementing the Framework for Effective Land Administration

Sustainable development demands effective land administration

Inspired by the FIG Cadastre 2014 and subsequent Cadastral Template surveys

The objectives were to be achieved by a combined approach:

- 1) FELA was to be **widely shared and promoted**;
- 2) An **online survey** was designed and completed to gain sector-wide insights;
- 3) In-depth key-informant **interviews** are to be conducted with relevant experts;
- 4) A **workshop** is to be organised, of which the findings will serve as inputs;
- 5) A **publication** will be published as an Official EuroSDR Publication (which is scientifically indexed) and made widely available as an Open Access publication – and various other formats; and
- 6) **Knowledge transfer** via the organisation of an EduServ course



UN-GGIM

United Nations Committee of Experts on
Global Geospatial Information Management

Expert Group on
Land Administration and Management

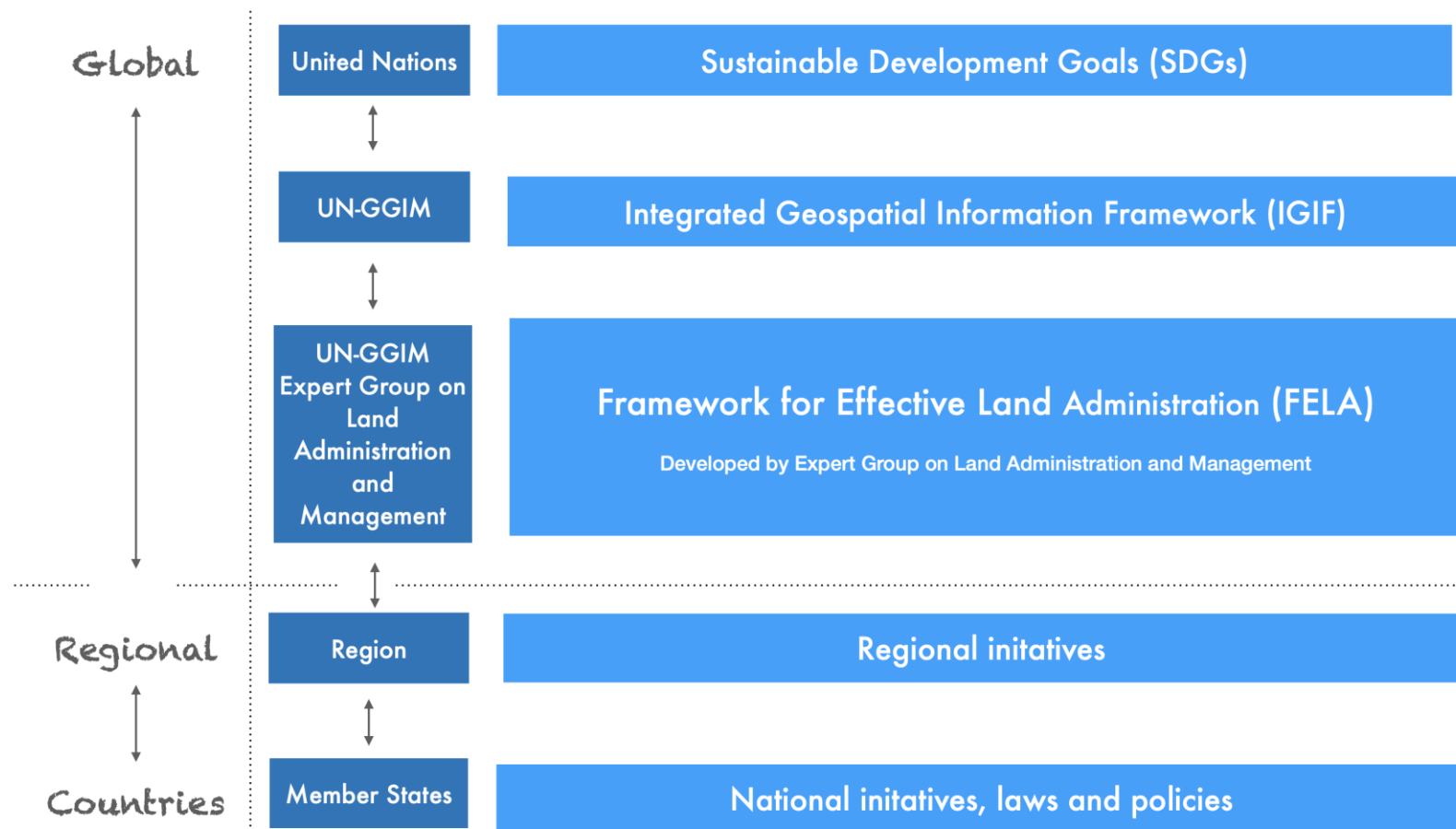
Positioning geospatial information to address global challenges

ggim.un.org



Implementing the Framework for Effective Land Administration

Sustainable development demands effective land administration



Graphic adapted from: Unger, E.M.; Bennett, R.; Lemmen, C.; de Zeeuw, K.; Zevenbergen, J.; Teo, C.; Crompvoets, J. (2020) Global policy transfer for land administration and disaster risk management. In: Land Use Policy, December 2020

Vertical Policy Transfer

(a) UN/UN-GGIM/EG-LAM (FELA)/Regional/National - between governance layers

‘Policy Transfer’ means the process by which actors borrow policies developed in one setting to develop programs and policies within another (Dolowitz & Marsh, 1996)

Two concepts:
institutional and/or
networked approach



UN-GGIM

United Nations Committee of Experts on
Global Geospatial Information Management

Expert Group on
Land Administration and Management



Positioning geospatial information to address global challenges

ggim.un.org



Implementing the Framework for Effective Land Administration

Sustainable development demands effective land administration

The selection of participants was restricted to European countries, with an existing relationship with EuroSDR and/or UN-GGIM Europe.

Participating countries:

- Austria,
- Belgium,
- Bosnia & Herzegovina,
- Bulgaria,
- Cyprus,
- Czech Republic,
- England and Wales,
- Estonia,
- Finland,
- Germany,
- Italy,
- Latvia,
- Luxembourg,
- the Netherlands,
- Portugal,
- Scotland,
- Slovenia,
- Switzerland,

In total
18
countries
participated
(so far)

The participating countries represent all regions of Europe: Central and Eastern, Northern, Southern and Western Europe.



UN-GGIM

United Nations Committee of Experts on
Global Geospatial Information Management

Expert Group on
Land Administration and Management

Positioning geospatial information to address global challenges

ggim.un.org



Implementing the Framework for Effective Land Administration

Sustainable development demands effective land administration

- Online survey approach aimed to create an **overview of the different stages of awareness and uptake** of the FELA by the Members of EuroSDR and/or UN-GGIM Europe
- Done by **converting the FELA framework into a series of questions**
- Each FELA strategic pathway question set would allow for a **mix of quantitative and qualitative data** to be collected
- Questions were created **based on insights** provided through the development of the FELA, as well as the specific context and discussions during the various EG-LAM meetings
- Survey included **both closed and open-ended questions**
 - Closed-ended question provided multiple choice answer option, therefore a set of answers was offered
(Whilst this might be considered a constraint, it was felt the benefits of enabling comparison between countries outweighed the prescriptive nature of the responses provided)

Open-ended questions provided for **more in-depth insights** at a country-specific level to be provided



UN-GGIM

United Nations Committee of Experts on
Global Geospatial Information Management

Expert Group on
Land Administration and Management

Positioning geospatial information to address global challenges

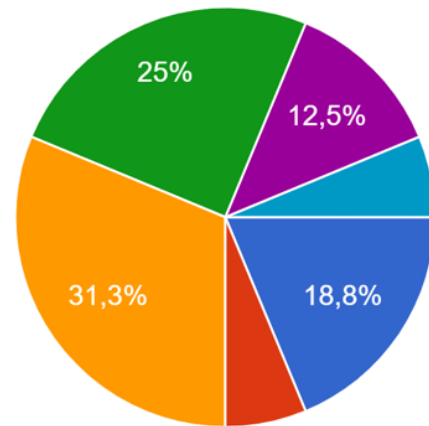
ggim.un.org



Implementing the Framework for Effective Land Administration

Sustainable development demands effective land administration

Does the land administration sector in your jurisdiction use performance indicators linked to the SDGs? Is data on these measures up-to-date and publicly available?



- Yes, performance indicators are linked to the SDGs, AND performance data IS publicly available
- Yes, performance indicators are linked to the SDGs, BUT performance data is NOT publicly available
- No, land administration performance is not linked to the SDGs, BUT, performance results ARE publicly available
- No, land administration performance is not linked to the SDGs, AND, performance results are NOT publicly available
- I am unsure
- More detailed description...

This question relates to the FELA Pathway 3 Finance - value proposition: land administration actors should take a lead in developing and enforcing accountability and transparency in terms of procedures, metrics and indicators. Doing so justifies and strengthens mandate, roles and responsibilities, amongst the community and society more broadly.

From the data, the SDGs are still not prevalent in the majority of performance metrics for land administration sectors (only 18.8%), although, this does mean that a small amount has already adopted the SDGs in the 5 years since they were established.





Implementing the Framework for Effective Land Administration

Sustainable development demands effective land administration

Appears to be a level of homogeneity in the surveyed countries with respect to governance structures, leadership, laws, and finance. Perhaps expected due to historical origins of systems and the recent influence of European Commission

There are outliers though. These could indicate different interpretations of the question, or that a given jurisdiction is taking a substantially different approach to land administration – therefore in-depth interviews

In general, it could be assumed that most countries are (or until now) have been moving towards a more collaboration and diversification in land administration decision making and mandate.

Worth noting that there is more diversity in financing aspects. Interestingly, this was also apparent in earlier work on Cadastral Template i.e., there are many ways to fund a governance mandated function





Implementing the Framework for Effective Land Administration

Sustainable development demands effective land administration

Need to analyze thoroughly the qualitative data, and assess its alignment with the quantitative results, the need to refine the survey further, apply inferential statistics

It has been shown that it is possible to convert FELA into a tool for assessment and awareness raising

This work is part of a broader activity/collaboration between UN-GGIM Europe and EuroSDR. It is positive to see this kind of policy transfer work taking place



UN-GGIM

United Nations Committee of Experts on
Global Geospatial Information Management

Expert Group on
Land Administration and Management

Positioning geospatial information to address global challenges

ggim.un.org



Implementing the Framework for Effective Land Administration

Sustainable development demands effective land administration

- › FELA is seen as enabler for partnerships
- › FELA is ‘maturity-agnostic’, and ‘no one size fits all’ approach
- › FELA fosters continual improvement
- › FELA does not measure one country against another
- › FELA helps to assess the ‘as is’ and the ‘wants to be’ situation, through trend analysis
- › FELA provides common language, to sit around the table



UN-GGIM

United Nations Committee of Experts on
Global Geospatial Information Management

Expert Group on
Land Administration and Management

Positioning geospatial information to address global challenges

ggim.un.org



Implementing the Framework for Effective Land Administration

Sustainable development demands effective land administration

Thank You!



UN-GGIM

United Nations Committee of Experts on
Global Geospatial Information Management

Expert Group on
Land Administration and Management



Positioning geospatial information to address global challenges

ggim.un.org