



大橋JCT実写・VR比較
Ohashi Junction: VR vs. On-site Comparison



Connecting Perceptions with Reality in the world of BIM and Cadastre

Faheem Khan – May 2022

President, Leica Geosystems Asia

Some thoughts and perspectives...

- Is the world flat?
- Is BIM designed as a geospatially aware process?
- Can autonomous sensors and platforms serve our industry?
- Do we have the basic ingredients and for success?
- Are we ready for an autonomous future?


Seeking better
ways to design
and live in a
sustainable future

Changing rapidly

Our world
is not flat



**Our journey
started here....**



*Our desire to Manage
Change - Connect
Perceptions with
Reality*

Digital World

Real World

*led to
explosive
growth in*

Reality Capture from the Air to Interior



Airborne Mapping
HxGN Content Program



Mobile Mapping



Underground Mapping
Ground Penetrating Radar



High-End Scanning

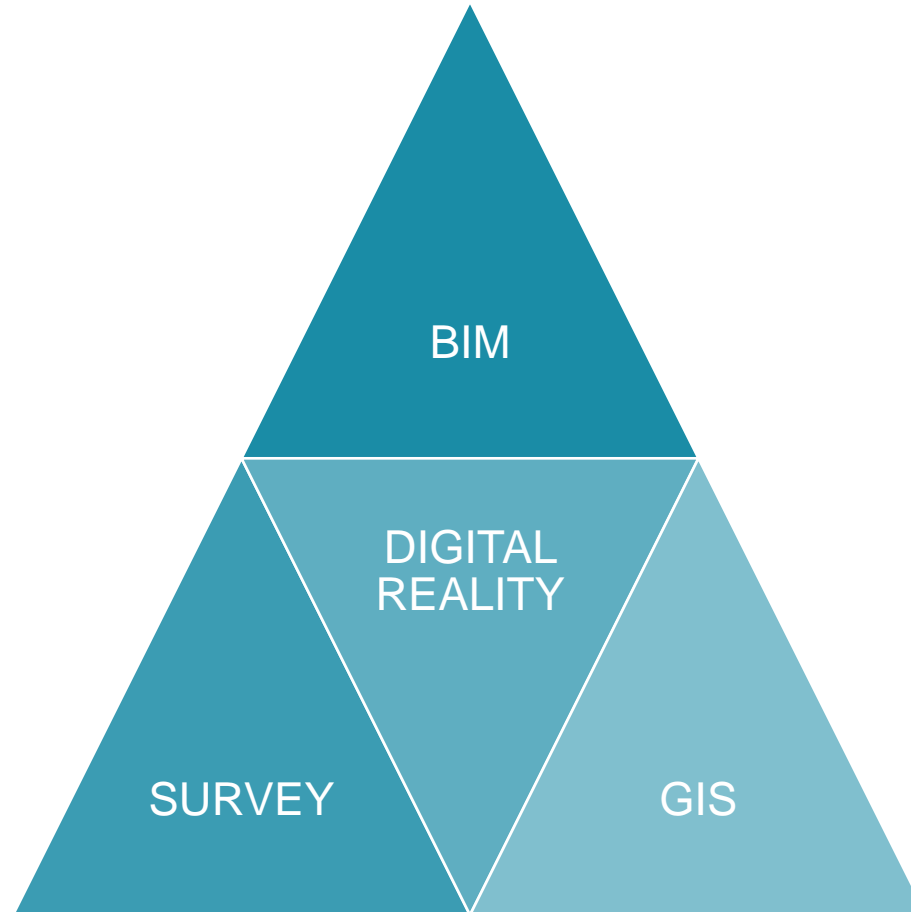


BLK: Reality-Capture
for Everyone!

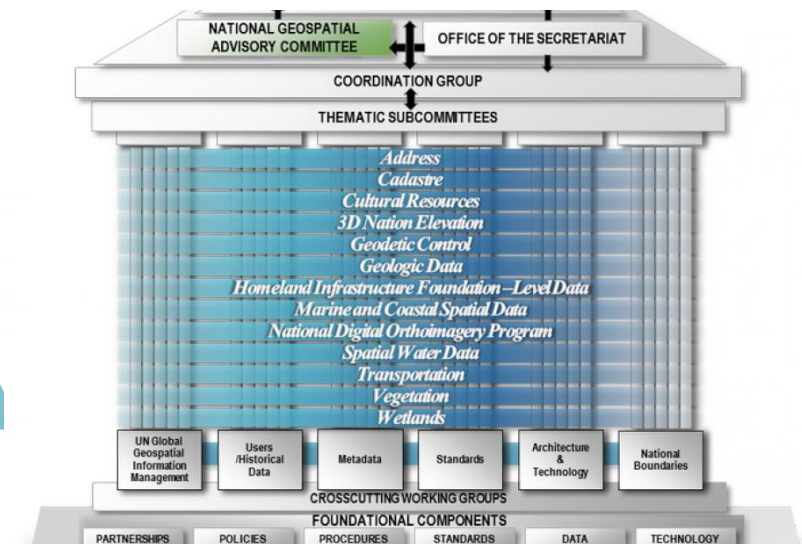
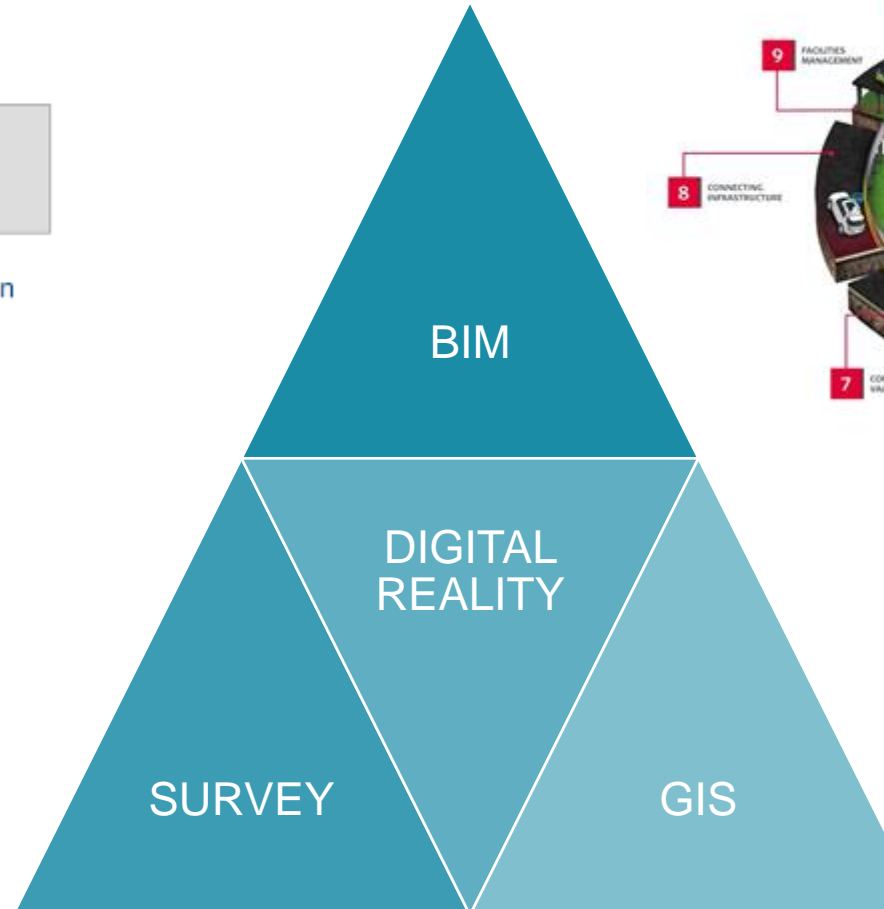
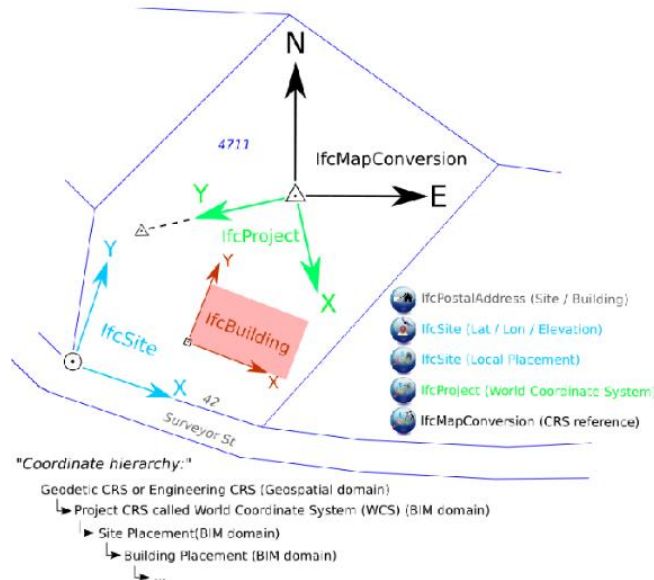
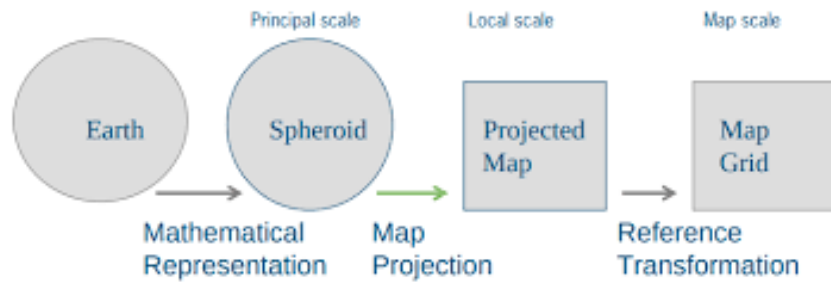


**Fuse Your Reality with
GIS, Cadastre & BIM**

Successful integration suggests a marriage of disciplines



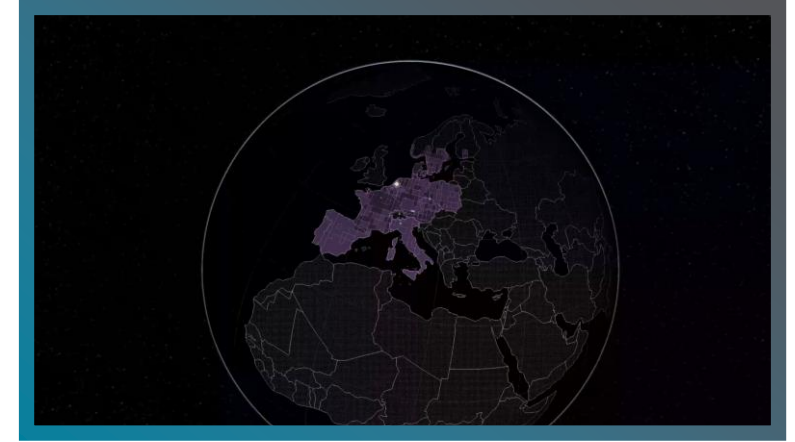
Successful integration suggests a marriage of disciplines



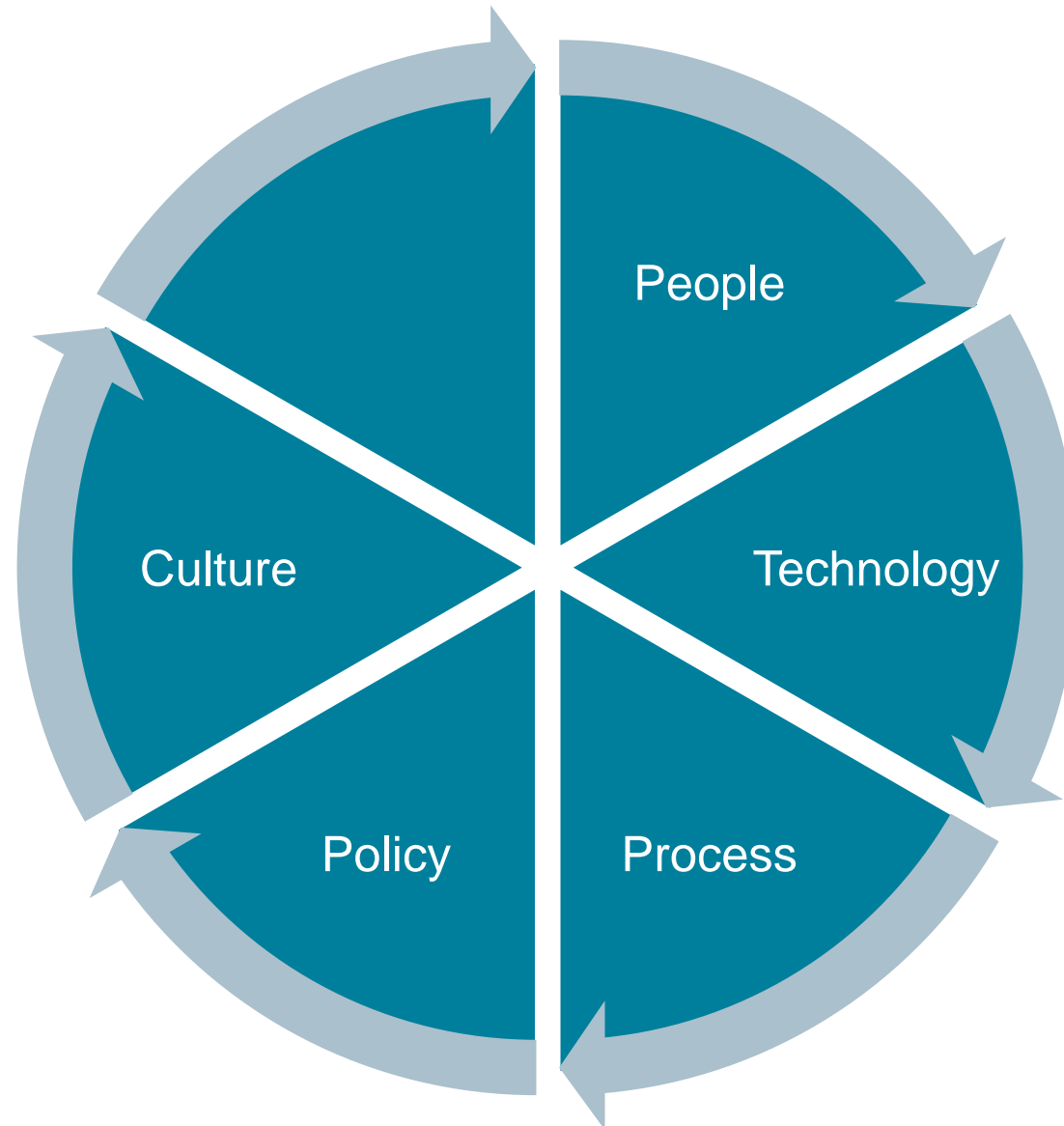


Scanning into the future

Disruptive Technology



Success Factors



An aerial night photograph of the Marina Bay Sands hotel in Singapore. The three towers are brightly lit, and the skybridge connects them at the top. The surrounding area, including the Esplanade - Theatres on the Bay and the Marina Bay Sands pool area, is also visible and lit up. A semi-transparent dark rectangle is overlaid in the center of the image, containing the text "Thank you!" in white.

Thank you!