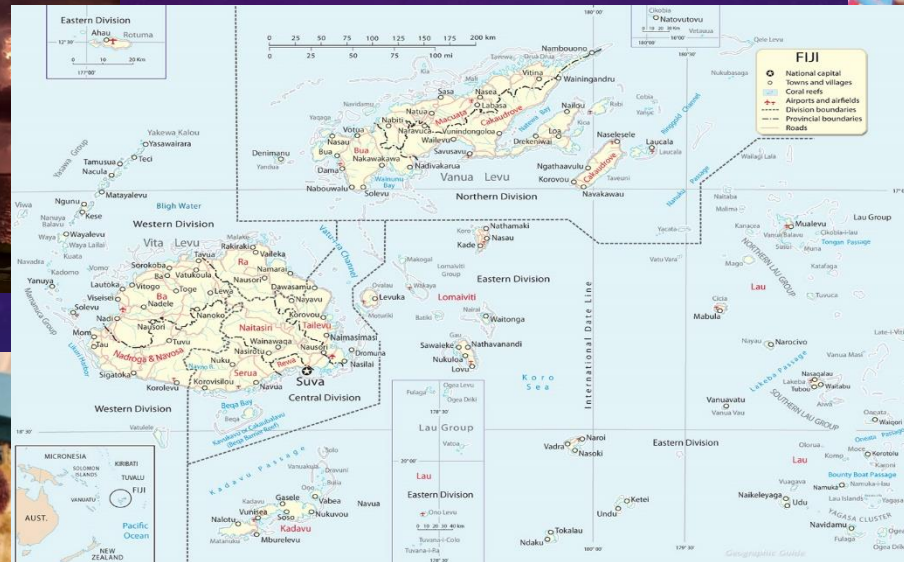




ENHANCING LAND ADMINISTRATION IN FIJI THROUGH THE IGIF AND THE COUNTRY ACTION PLAN

MEIZYANNE HICKS
MINISTRY OF LANDS AND MINERAL RESOURCES
FIJI

ABOUT FIJI



LAND ADMINISTRATION IN FIJI

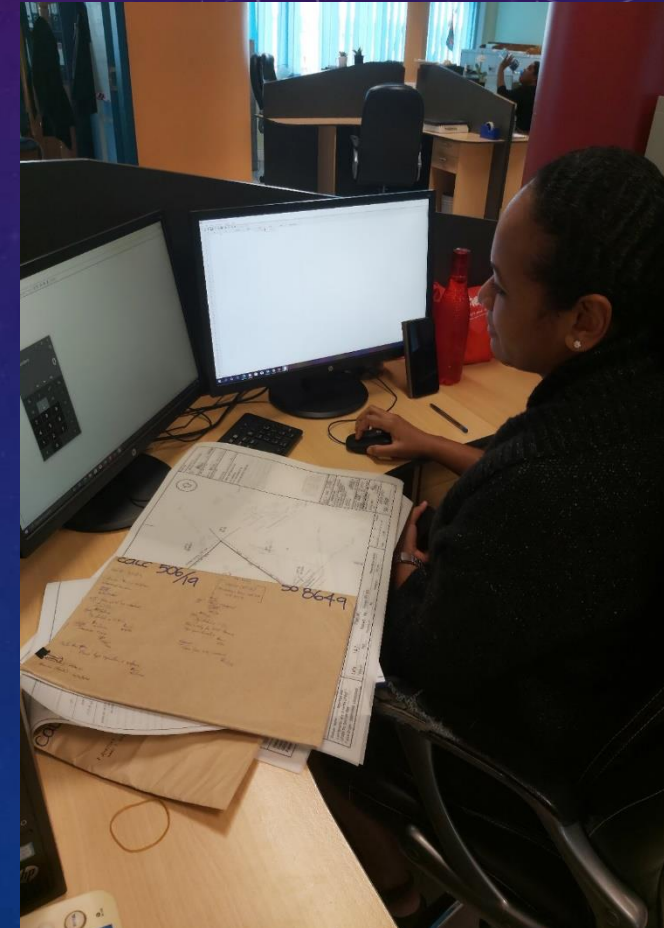
There are three main types of land in Fiji:

1. iTaukei land approx. 89.1%
2. Freehold land approx. 7%
3. State land, approx. 3.9%



CHALLENGES

- Centralization of land records
- Out dated and unclear processes
- Out dated legislation & regulations
- Budget limitations
- Capacity building



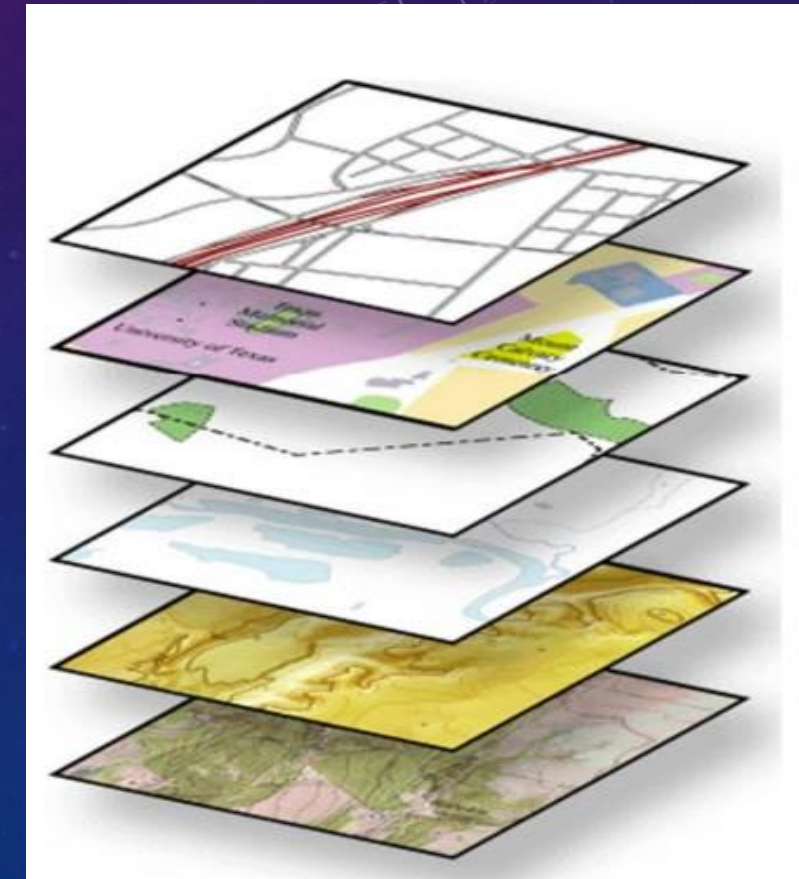
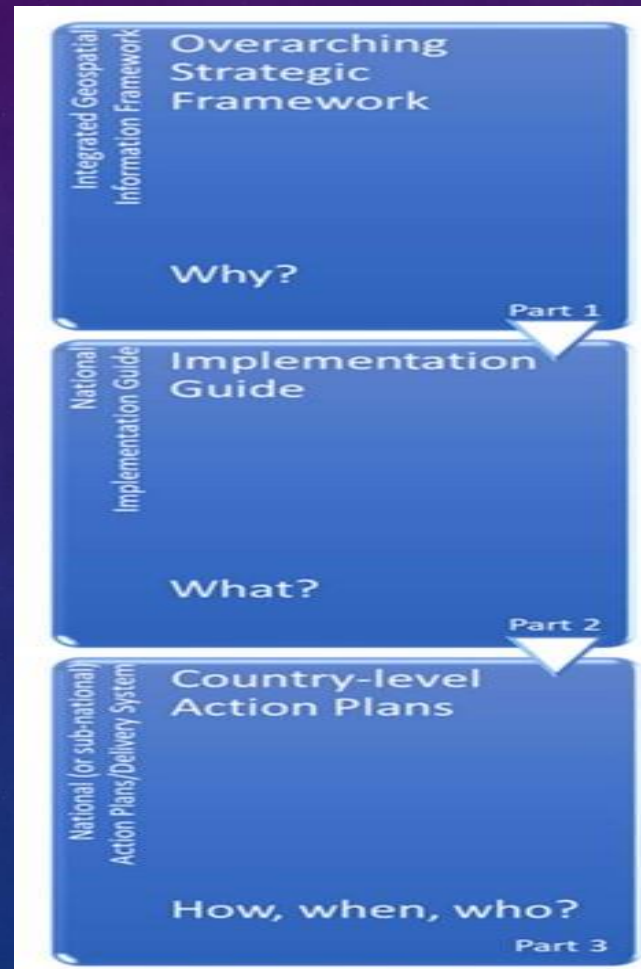
INTEGRATED GEOSPATIAL INFORMATION FRAMEWORK (IGIF)



INTEGRATED GEOSPATIAL INFORMATION FRAMEWORK

A STRATEGIC GUIDE TO DEVELOP AND STRENGTHEN NATIONAL GEOSPATIAL INFORMATION MANAGEMENT

VISION								
The efficient use of geospatial information by all countries to effectively measure, monitor and achieve sustainable social, economic and environmental development – leaving no one behind								
MISSION								
To promote and support innovation and provide the leadership, coordination and standards necessary to deliver integrated geospatial information that can be leveraged to find sustainable solutions for social, economic and environmental development.								
STRATEGIC DRIVERS								
National Development Agenda • National Strategic Priorities • National Transformation Programme • Community Expectations • Multilateral trade agreements • Transforming our World: 2030 Agenda for Sustainable Development • New Urban Agenda • Sendai Framework for Disaster Risk Reduction 2015–2030 • Addis Ababa Action Agenda • Small Island Developing States Accelerated Modalities of Action (SAMOA Pathway) • United Nations Framework Convention on Climate Change (Paris Agreement) • United Nations Ocean Conference: Call for Action								
UNDERPINNING PRINCIPLES								
Strategic Enablement	Transparent and Accountable	Reliable, Accessible and Easily Used	Collaboration and Cooperation	Integrative Solution	Sustainable and Valued	Leadership and Commitment		
GOALS								
Effective Geospatial Information Management	Increased Capacity, Capability and Knowledge Transfer		Integrated Geospatial Information Systems and Services		Economic Return on Investment			
Sustainable Education and Training Programs	International Cooperation and Partnerships Leveraged		Enhanced National Engagement and Communication		Enriched Societal Value and Benefits			
STRATEGIC PATHWAYS								
Governance and Institutions	Legal and Policy	Financial	Data	Innovation	Standards	Partnerships	Capacity and Education	Communication and Engagement
Governance model Leadership Institutional structures Value proposition	Legislation Implementation and accountability Norms, policies and guides Data protection and licensing	Business model Investment Partnerships and opportunities Benefits realization	Fundamental data themes Data supply chain interlinkages Custodianship, acquisition and management Data duration and delivery	Technological advances Promoting innovation and creativity Process improvement Bridging the digital divide	Legal interoperability Semantic interoperability Data interoperability Technical interoperability	Cross-sector and interdisciplinary cooperation Community participation Industry partnerships and joint ventures International collaboration	Awareness raising Entrepreneurship Formal education Professional workforce training	Stakeholder identification Planning and execution Integrated engagement strategies Monitoring and evaluation
Knowledge Decisions Development Society Economy Environment Users Citizens Access Technology Applications Value								



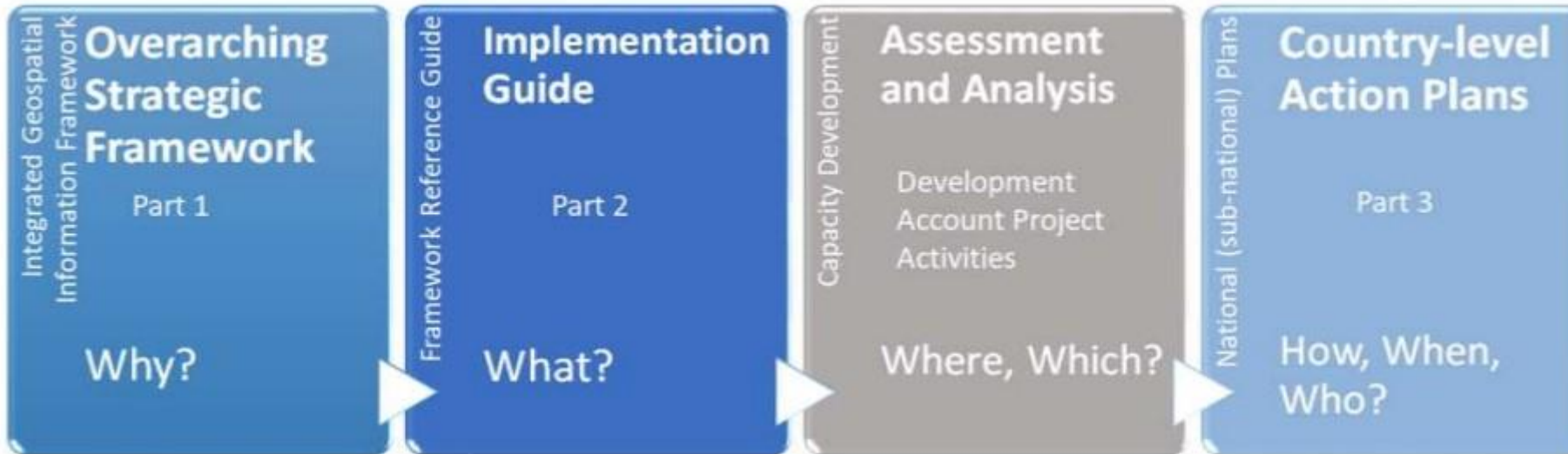
FIJI COUNTRY ACTION PLAN



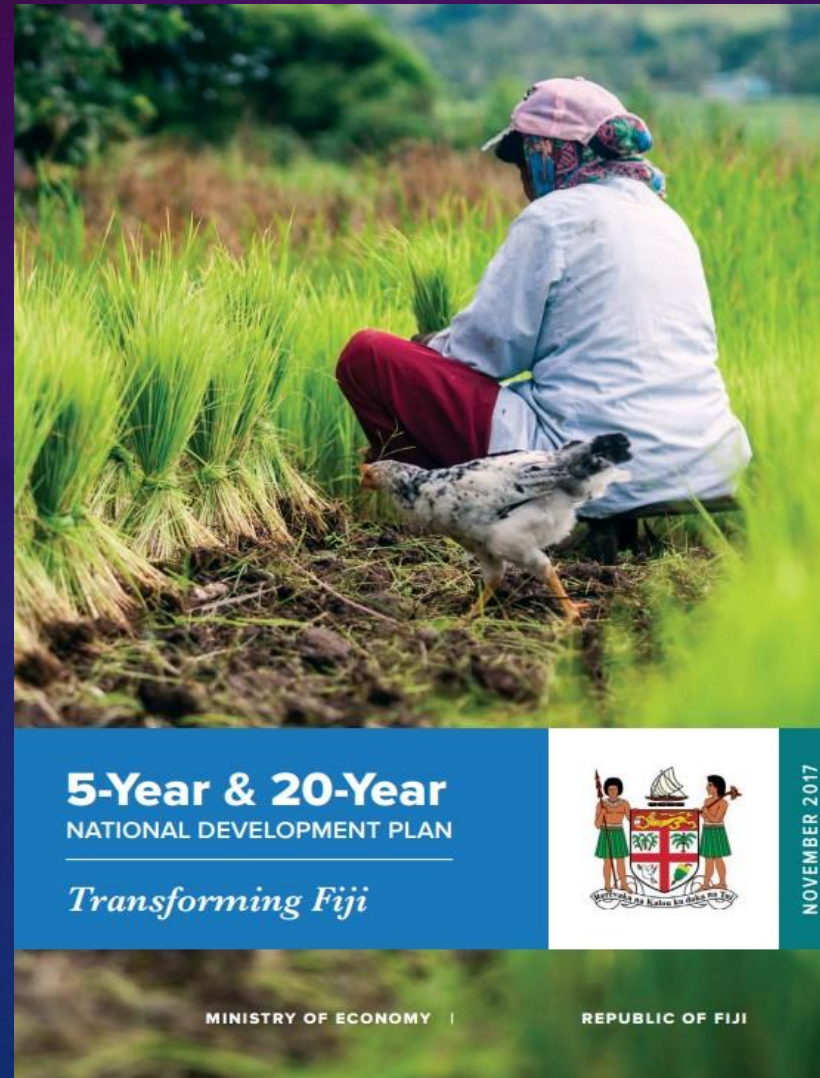
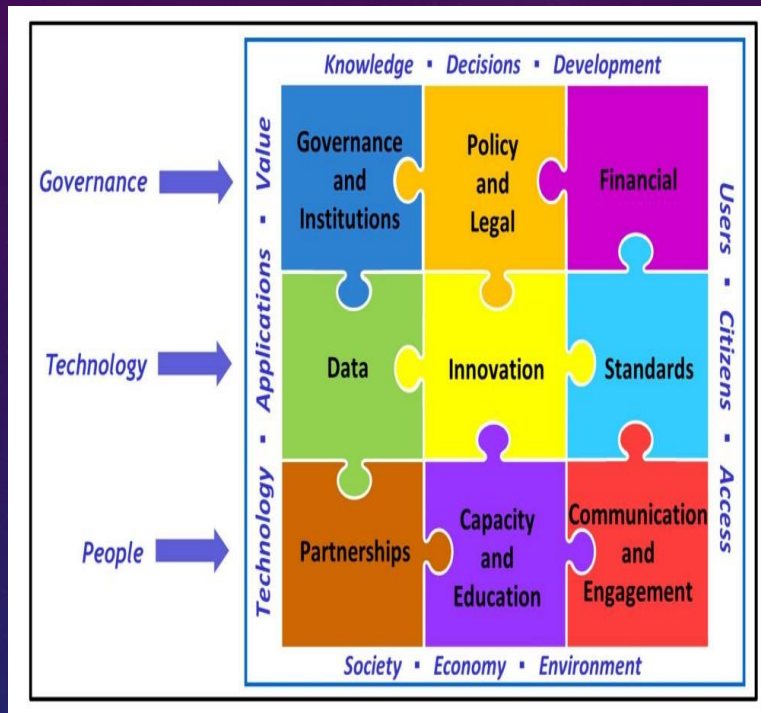
United Nations

11TH TRANCHE DEVELOPMENT ACCOUNT PROJECT

STRENGTHENING GEOSPATIAL INFORMATION MANAGEMENT IN DEVELOPING COUNTRIES
TOWARDS IMPLEMENTING THE 2030 AGENDA FOR SUSTAINABLE DEVELOPMENT
(PROJECT 1819D)



COUNTRY ACTION PLAN AND LAND ADMINISTRATION



- Capacity Building
- Development if iTaukei and State Land
- Strengthen lease processing



Vinaka