

# DeepData: Knowledge for the common heritage of mankind

Sheldon Carter  
Database Manager

# Overview

- 1 Background
- 2 What is DeepData
- 3 What does it contain
- 4 Who can use DeepData
- 5 Who benefits from DeepData



# Background

- ISA administers the mineral resources
- Control and organize current & future exploration activities
- Under Article 143, Par 2 of UNCLOS, ISA required to promote and encourage MSR
- ISA SD 4.3 – Share data in an open and transparent manner
- ISA SD 4.4 – Promote access to non-confidential information & data



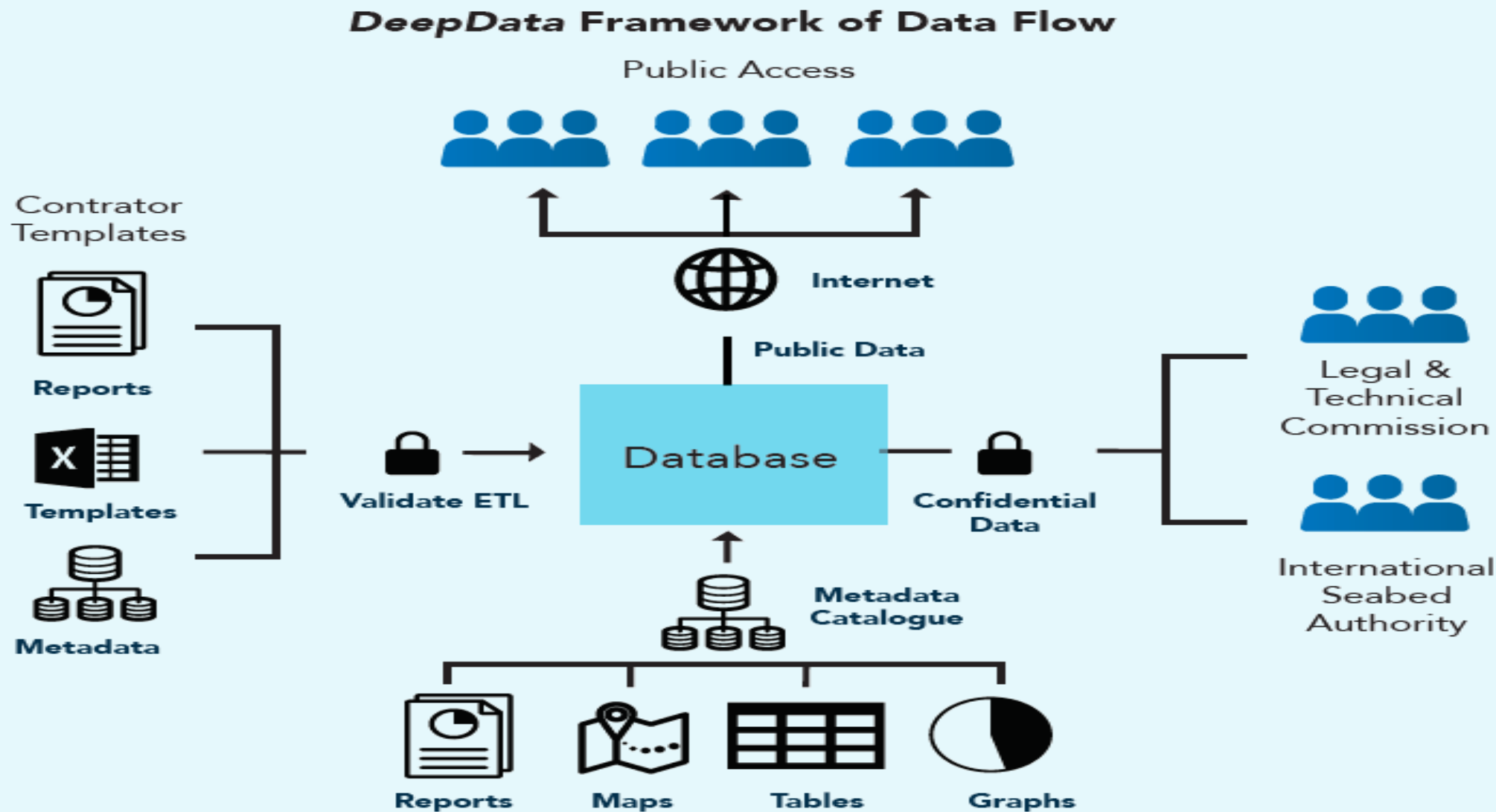


# History

- Database started as POLYDAT
- Evolved to become CDR in 2003
- DeepData born from LTC Data Management Strategy request in 2015
- ISA **Deep Seabed and Ocean Database** (DeepData was launched during 25<sup>th</sup> Session of ISA)



# What DeepData Contains



# What DeepData Contains

Data is separated based on confidentiality status

Structured vs Unstructured data

Data on mineral resource assessment  
(Geological data)\*

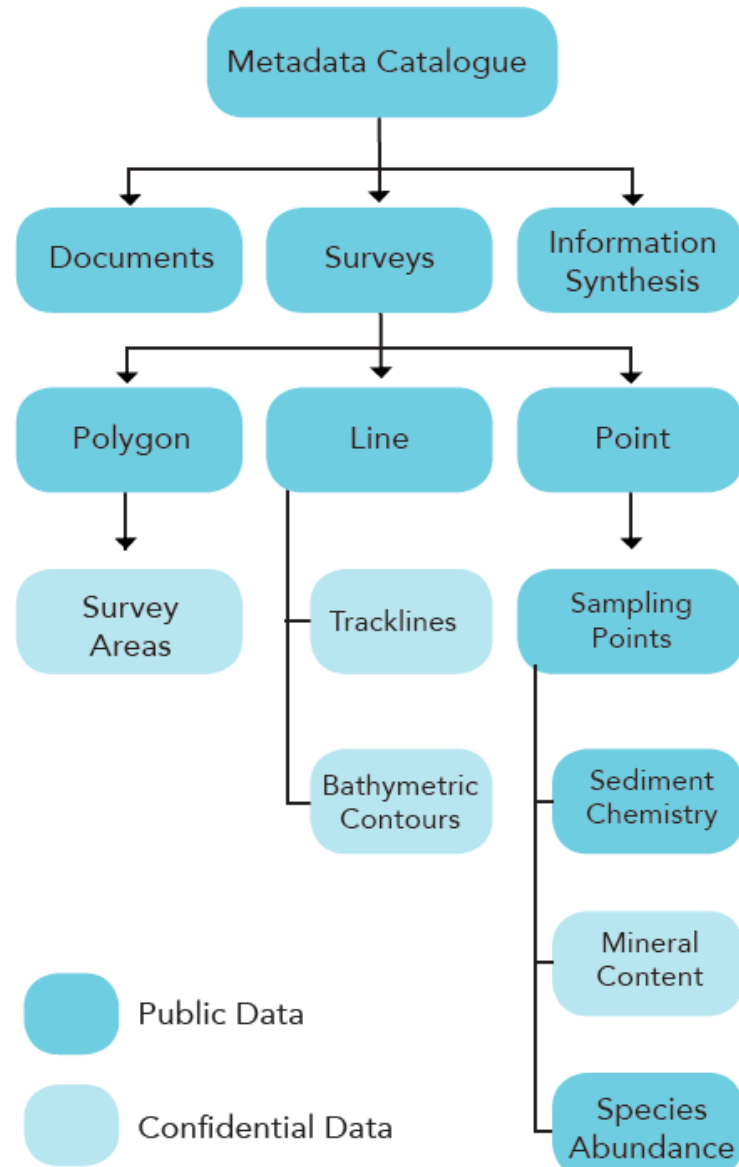
Environmental baseline data

- Biological parameters
- Physical parameters
- Geochemical parameters

GIS functionality for visualization



## Types of Data in DeepData





# DeepData Geospatial Features



International Seabed Authority

DeepData

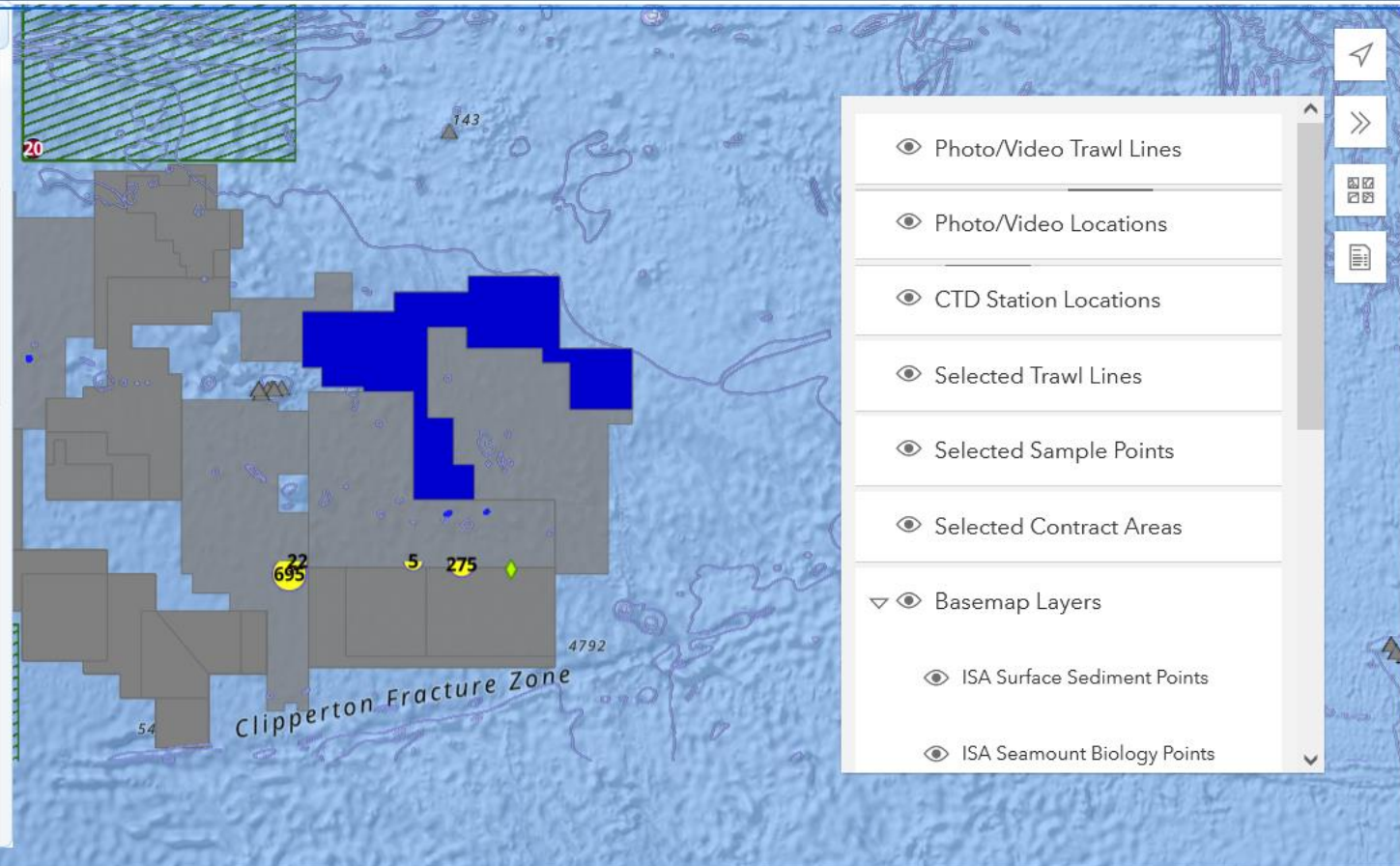
MAP OPTIONS

HOME

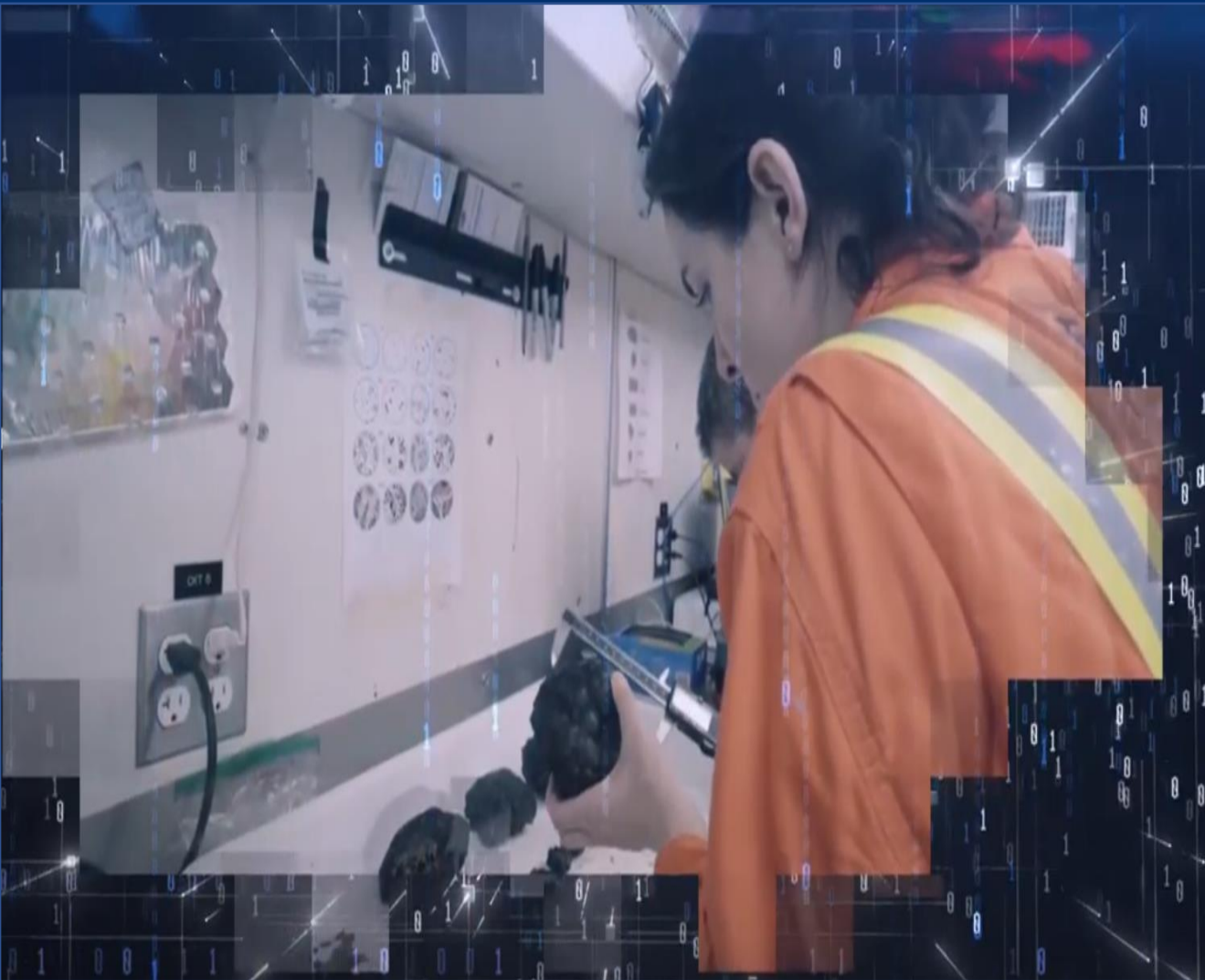
Login

- Layers Search CTD Photo/Video Gallery Library Docs
- ☐ Deep Ocean Resources Development Co. Ltd. - PMN
  - ☐ Federal Institute for Geosciences and Natural Resources of Germany - PMN
  - ☐ Federal Institute for Geosciences and Natural Resources of Germany - PMS
  - ☐ Global Sea Mineral Resources NV - PMN
  - ☐ Government of India - PMN
  - ☐ Government of India - PMS
  - ☐ Government of the Republic of Korea - CRFC
  - ☐ Government of the Republic of Korea - PMN
  - ☐ Government of the Republic of Korea - PMS
  - ☐ Government of the Republic of Poland - PMS
  - ☐ Government of the Russian Federation - PMS
  - ☐ Institut français de recherche pour l'exploitation de la mer - PMN
  - ☐ Institut français de recherche pour l'exploitation de la mer - PMS
  - ☐ Interoceanmetal Joint Organization - PMN
  - ☐ Japan Oil, Gas and Metals National Corporation - CRFC
  - ☐ Marawa Research and Exploration Ltd. - PMN
  - ☐ Ministry of Natural resources and environment of the russian federation - CRFC
  - ☐ Nauru Ocean Resources Inc. - PMN
  - ☒ Ocean Mineral Singapore Pte. Ltd. - PMN
  - ☐ Reserved Area - CRFC
  - ☐ Reserved Area - PMN
  - ☐ Tonga Offshore Mining Limited - PMN
  - ☐ UK Seabed Resources Ltd. - I - PMN
  - ☐ UK Seabed Resources Ltd. - II - PMN
  - ☐ Yuzhmorgeologiya - PMN

Contract Status



# Users of DeepData



**Contractors** - Submit data, annual reports, and supplementary information

**LTC members** - Review contractor's performance through the review of annual reports, including digital data submission

**Secretariat** - Manage incoming data, and ensure overall maintenance of *DeepData*

**Public (including scientists)** - Access /download data relating to marine environment of the Area; analyze and synthesize data and produce various forms of data products



International Seabed Authority



# Benefits of DeepData for Users

- Promote scientific knowledge for mankind
- Ensure regulation of prospecting, exploration and exploitation of deep-seabed mineral resources
- Aid in the protection of the marine environment
- Aid in the evaluation of applications
- Enable data gap analysis to guide contractors
- Assess changes in the marine environment
- Increase knowledge in MSR for the scientific community and general public





## **International Seabed Authority**

14 - 20 Port Royal Street Kingston, Jamaica

Phone: +1 (876) 922-9105

Fax: +1 (876) 922-0195

**[isa.org.jm](http://isa.org.jm)**