

INTEGRATING AND RE-PURPOSING INFORMATION SYSTEMS AND INFRASTRUCTURES FOR THE FUTURE WE WANT

TIM TRAINOR – INTERNATIONAL CONSULTANT

FORMER CO-CHAIR UN-GGIM

FORMER CHIEF GEOSPATIAL SCIENTIST - U.S. CENSUS BUREAU

TOPICS

- Why data integration is important
- Benefits from data integration
- UN response to the need for data integration
- The data disruptors
- Lots of data ----- now what?
- A national case study

Why Information Integration is Important

- Increasing amount of data and data types
- Statistical data often applies to location
- Together, statistical and geospatial information lead to better understanding
- Together, integration expands the value and use of statistical and geospatial information in a national, regional, and local context
- Addresses the evolving proposition of modern, agile, policy-oriented, collaborative, integrated national information systems

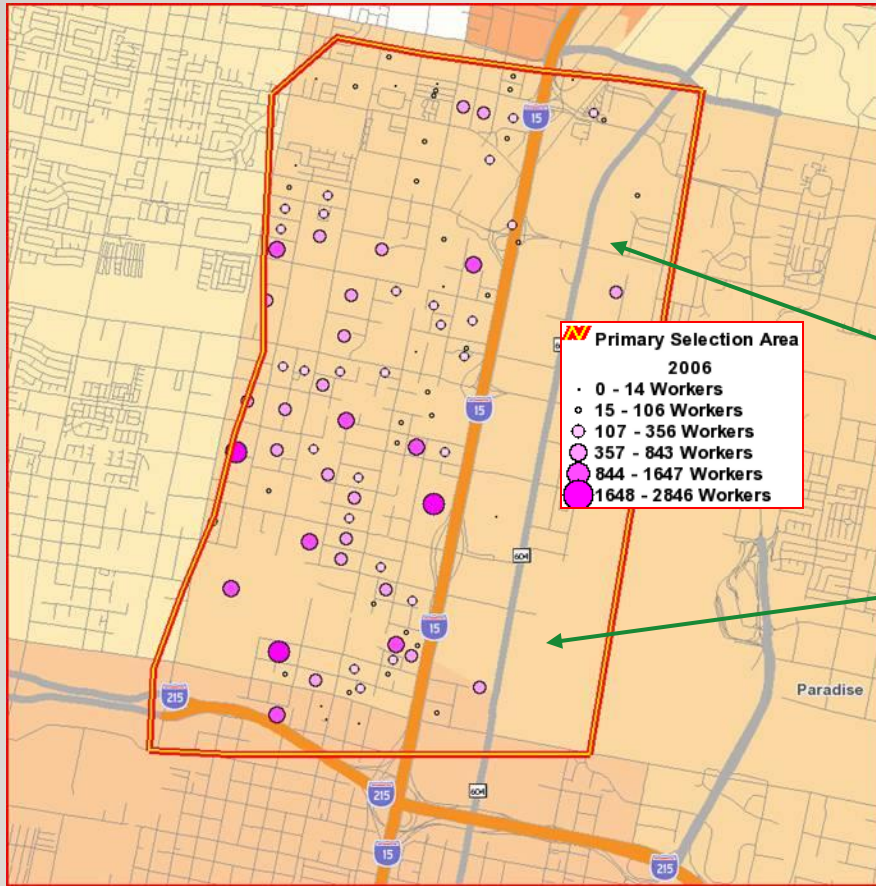
Why Information Integration is Important

- Accurately locating information on people and businesses can result in a fuller understanding of social, economic and environmental issues than is possible by viewing statistical or geospatial information in isolation.
- To make progress on the 17 Sustainable Development Goals, targets, and global indicator framework requires new data acquisition and integration approaches to improve the availability, quality, timeliness and disaggregation of data at all levels.

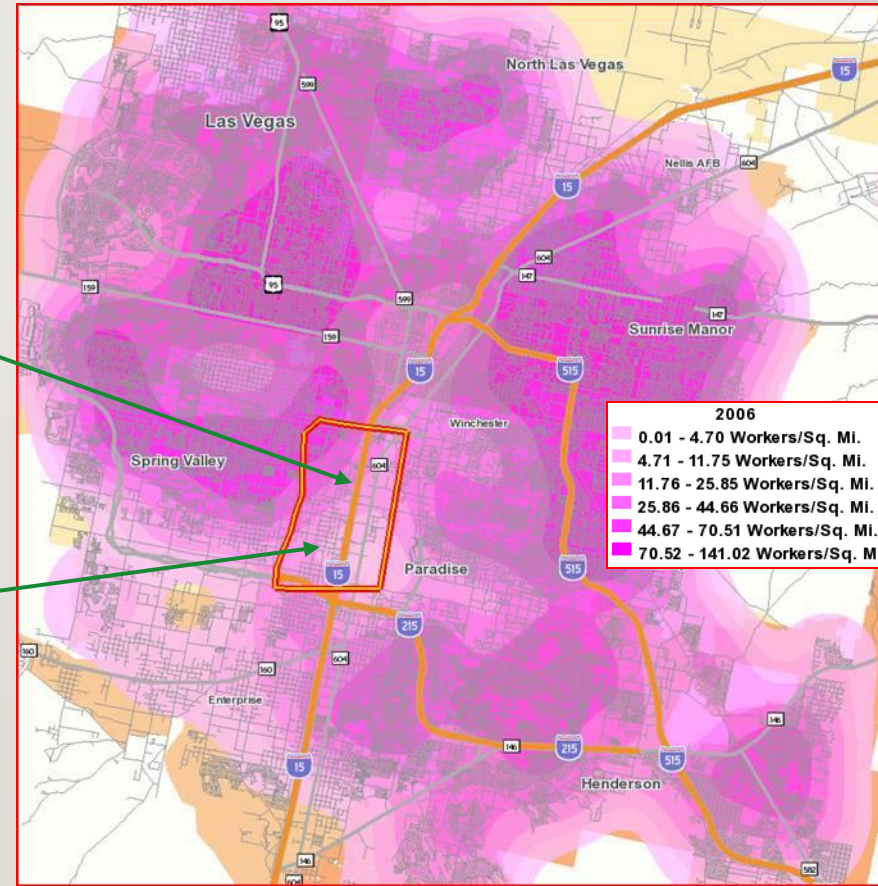


On the Map: Visualizing Employment in Paradise

Where Workers are Employed



Where Workers Live



Benefits of Integration

- Improve planning for regional and local economies and communities
- Better target service delivery at the local-area level
- Meets citizen expectations for benefits and services such as:
 - health care
 - tax refunds or
 - social benefits

Benefits of Integration

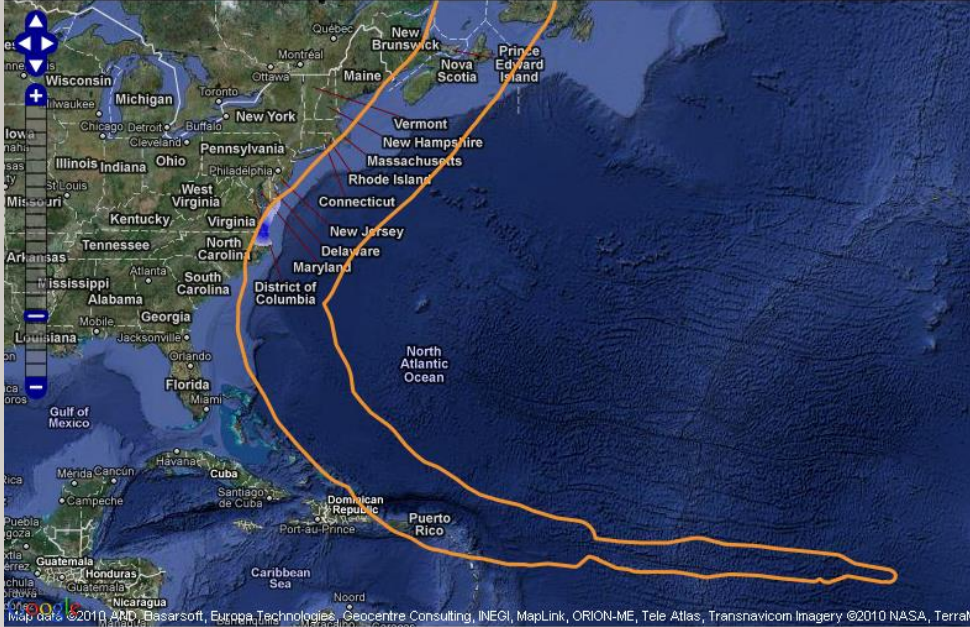
- Direct impact on improving lives for citizens
- For example, providing health facilities and access to education, clean water and sanitation improves the social well-being of citizens
- Economic development
- Industrial development and energy transition
- Tourism

More Benefits of Integration

- Public safety
- Transportation planning
- Smart cities
- Site location of schools and hospitals
- Risk management
- Crime activity and investigation
- Utilities planning for electric and water services

OnTheMap **Hurricanes** for Emergency Management
Local Employment Dynamics Partnership

[Home](#) [Getting Started](#) [Help](#) [Download to XLS](#) [LED Home](#)




Storm Information

Viewing Date/Time: 09/05/2010 02:40 (GMT)

Storm Name: Tropical Storm EARL

Storm Code: al072010



U.S. Jobs Within Hurricane Wind Swath

Hurricane EARL	Jobs
Total	590,136
Jobs by State, County, Place	
Delaware	8,980
Maine	4,501
Maryland	22,482
Rhode Island	807
Virginia	553,366
Jobs by Characteristics	
Jobs by Worker Age	
Jobs by Worker Earnings	
Jobs by Industry Type (2-digit NAICS)	
Agriculture, Forestry, Fishing and Hunting	
Mining, Quarrying, and Oil and Gas Extraction	
Utilities	
Construction	

No Jobs data is reported for storms that have not met the criteria for reporting.

Job numbers refer to Total Primary Jobs in 2008 within the hurricane wind swath by location or characteristic.

Job numbers reported by location correspond to the portion of the state, county, or place that is also within the hurricane wind swath. Job numbers for characteristics reported for the total wind swath area - all locations.

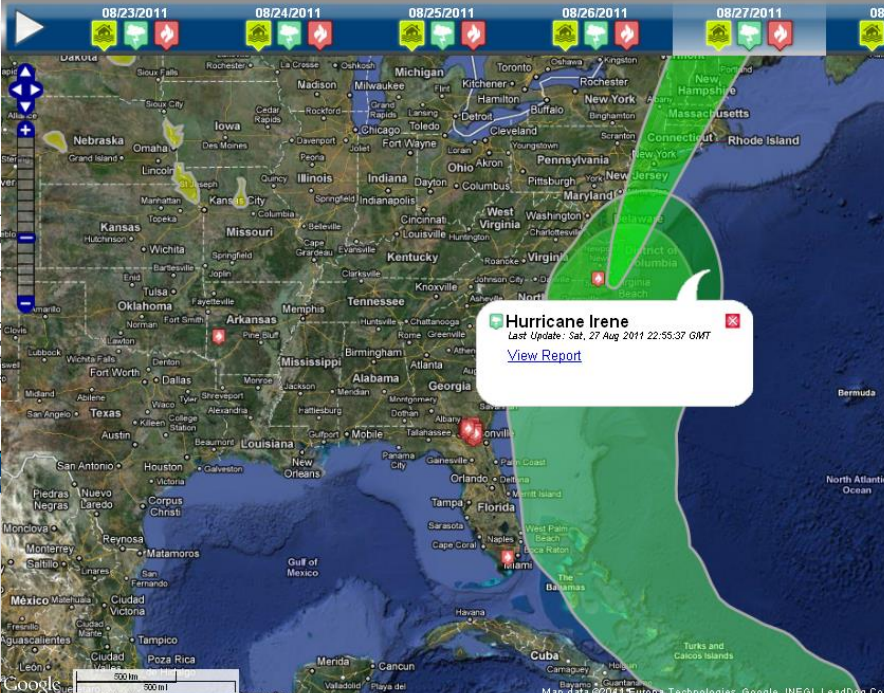
Job numbers reported do not include states where we have 2008 local employment data (CT, DC, MA, NC, RI, VT).

USCENSUSBUREAU
Helping You Make Informed Decisions

[Privacy Policy](#) | [2010 Census](#) | [Data Tools](#) | [Information Quality](#) | [Product Catalog](#) | [Contact Us](#)

OnTheMap for Emergency Management
LED Home OnTheMap Help

08/23/2011
08/24/2011
08/25/2011
08/26/2011
08/27/2011
08/28/2011
08/29/2011



Hurricane Irene

Last Update: Sat, 27 Aug 2011 22:55:37 GMT

[View Report](#)

Base Map: Hybrid Map

Zoom To: Lower 48 States


- Hurricanes and Tropical Storms
 - Find Hurricanes and Tropical Storms
 - Forecast Area (Cone of Uncertainty)
 - Current Wind Radii
 - Wind History (Cumulative Swath)
- Fires
 - Find Fires
 - Fire Perimeters
- Floods (significant River Flood Outlook)
 - Occurring or Imminent
 - Likely

Click on an event on the map for additional information [hide](#)

USCENSUSBUREAU
Helping You Make Informed Decisions

[Privacy Policy](#) | [2010 Census](#) | [Data Tools](#) | [Information Quality](#) | [Product Catalog](#) | [Contact Us](#) | [Home](#)

Source: U.S. Census Bureau, Center for Economic Studies | e-mail: CES.OnTheMap.Feedback@census.gov



Linking geospatial information to statistics through geocoding.

[2nd Session of UN-GGIM, August 2012]

Stronger interoperability and integration, between geospatial and statistical authorities.

[Future trends in geospatial information management: the five to ten year vision, July 2013]

International standard for linking socio-economic information to location—
an **international statistical geospatial framework.**

[UNSC Programme Review. February 2013]



UN-GGIM

United Nations Committee of Experts on
Global Geospatial Information Management



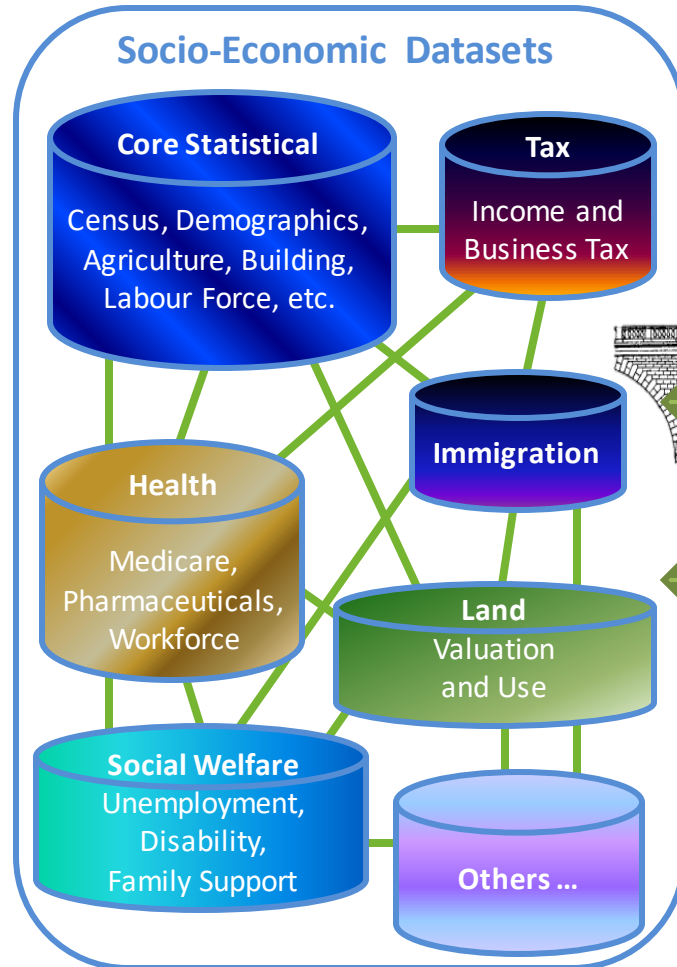
BETTER DATA
BETTER LIVES

unstats.un.org

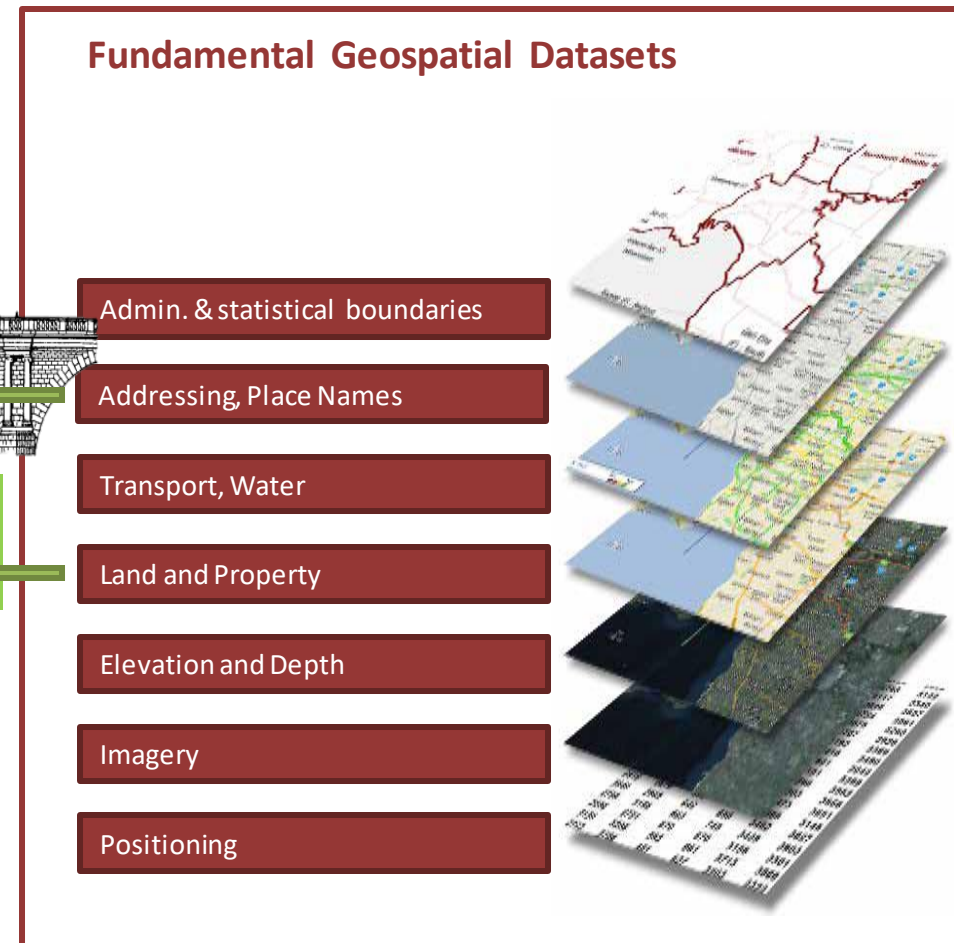
@UNStats #UNStatCom

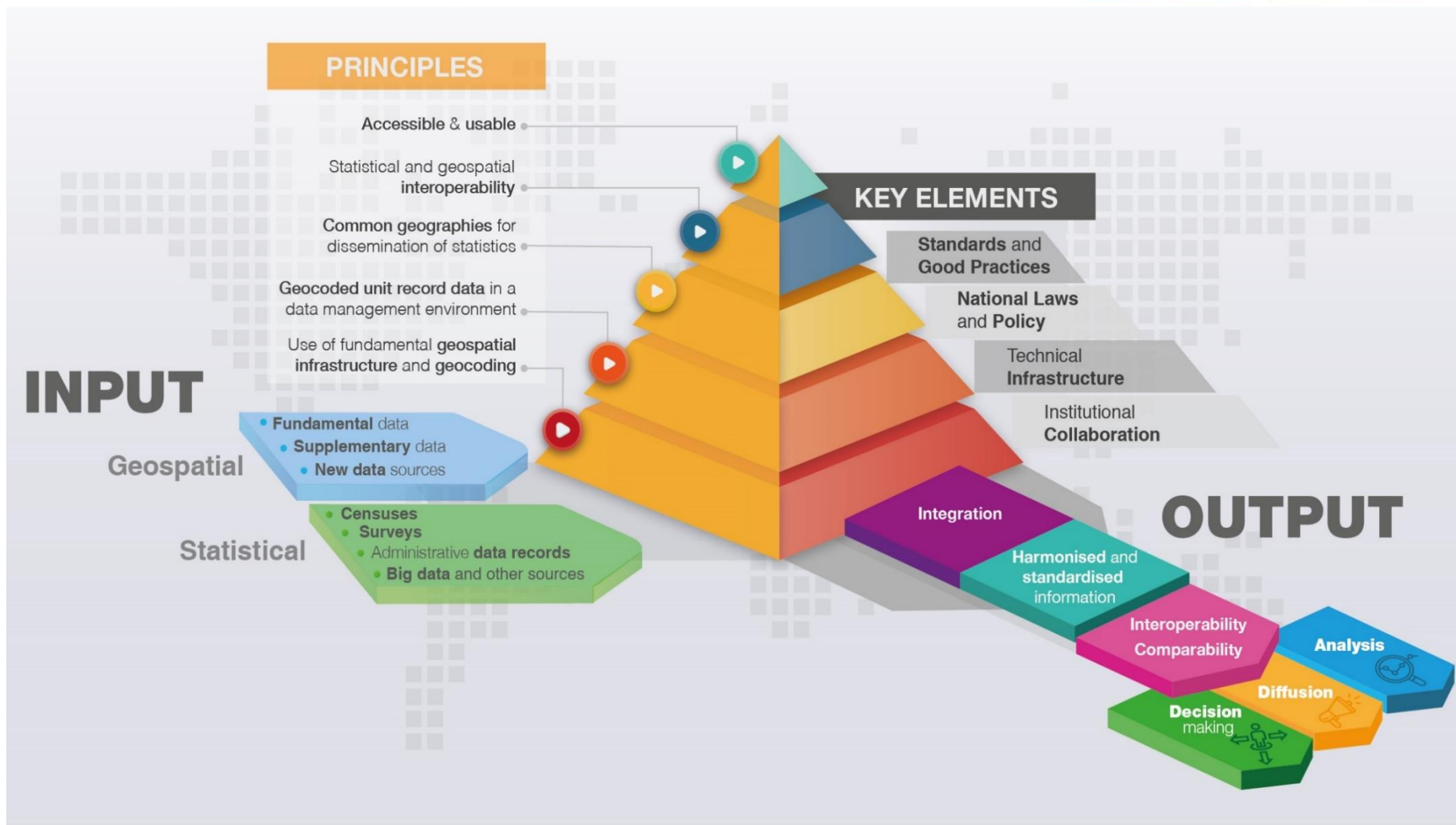
Bridging between two communities

Statistical Community



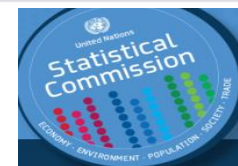
Spatial Community





UN-GGIM |

United Nations Committee of Experts on Global Geospatial Information Management

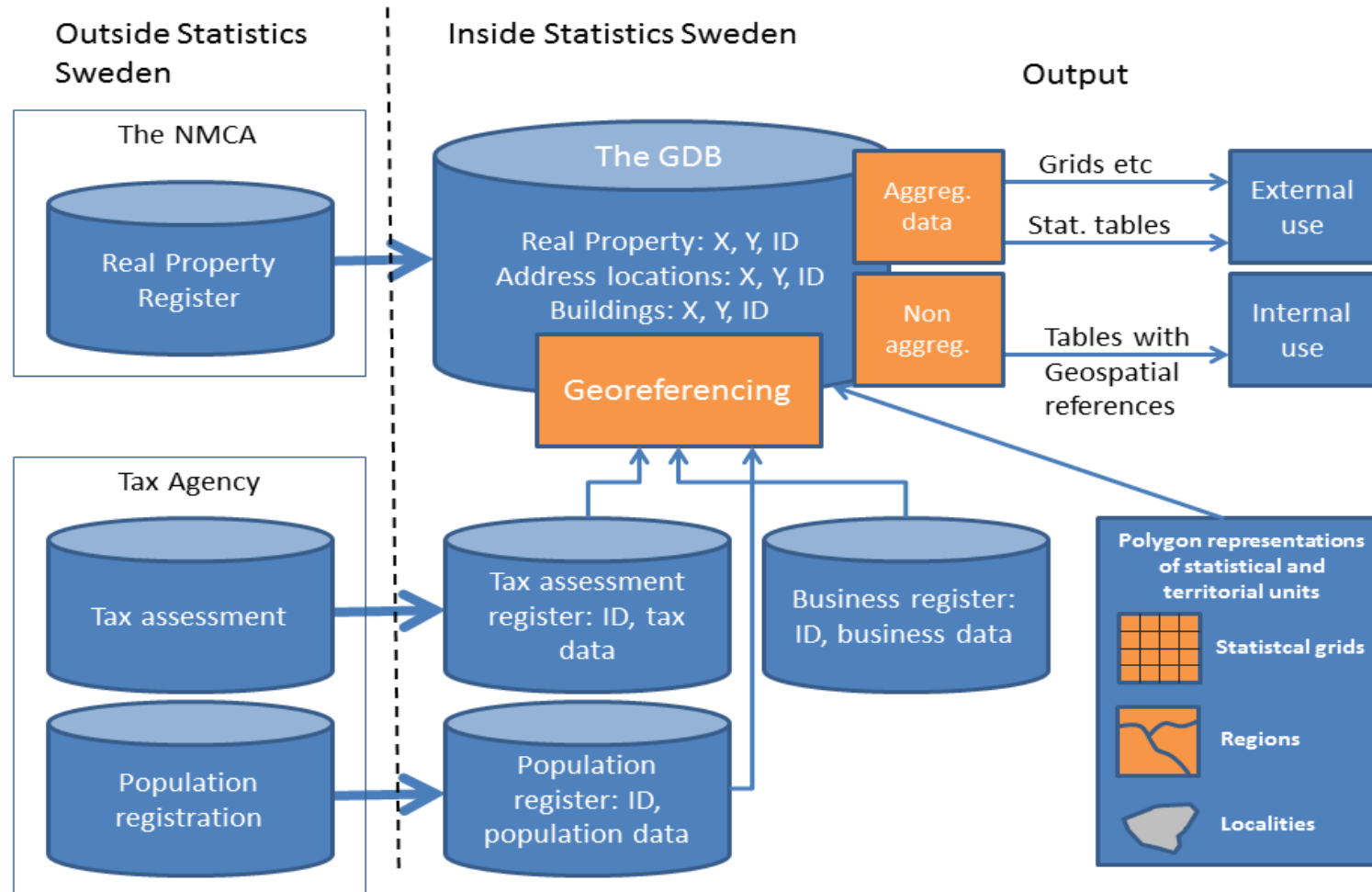


BETTER DATA
BETTER LIVES

unstats.un.org

@UNStats #UNStatCom

Sweden: Data Integration on Property



Summary of Benefits of Integration



UN-GGIM

United Nations Committee of Experts on
Global Geospatial Information Management



BETTER DATA
BETTER LIVES

unstats.un.org

@UNStats #UNStatCom

A world map is shown in a light yellow color against a darker yellow background. Numerous small, stylized human icons are scattered across the map, representing data points or a crowd. The icons are in shades of white and light grey. The text 'Data & the Crowd' is written in a large, black, serif font, and 'Impact and Opportunity' is written in a smaller, white, sans-serif font below it.

Data & the Crowd

Impact and Opportunity



WHY IS
BIG DATA
ANALYTICS
SO IMPORTANT?



**Intent - context of
strategic, tactical, and
operational decision
management**

**Technology — priority
focus on hardware,
software, and services
for economical supply
of relevant Big Data
and analytics**

**Process — relevancy
of Big Data and
analytics to roles,
responsibilities, and
outcomes**

Big Data Analytics



**Data — governance
and life-cycle
management of
voluminous, varied,
and high-velocity data**

**People — alignment of
organization and
cultural norms with
the use of Big Data
and analytics**

NSDI NAMIBIA ON THE NSA 5 YEAR STRATEGIC PLAN

STRATEGIC PLAN
(2017/18 - 2021/22)



GOAL 3: REALISE A SPATIALLY-ENABLED SOCIETY:

SO1: Enhance a nation-wide infrastructure of digital spatial data, tools and services

- Develop a responsive NSDI coordination framework
- Spatial data production and management
- Develop data dissemination tools and services to users and conduct advocacy work

SO2: Improve statistical integration with spatial data

- Advocate for common geographies for the dissemination of statistics
- Develop a geocoded register of dwellings and other structures in the country



Partnerships are the glue of the IGIF*

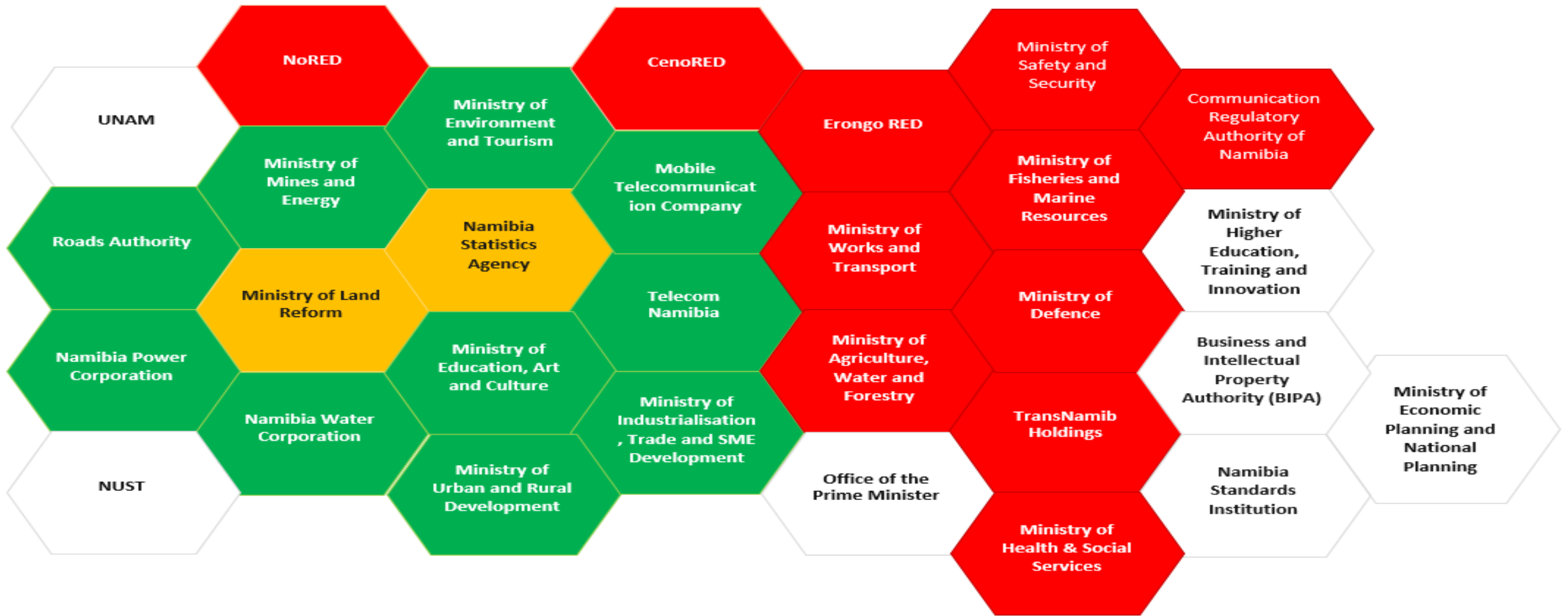


Figure: National level NSDI partnership arrangements

Data custodian signed MoU

Data custodian not yet signed MoU

NSDI Coordinating Bodies

Participation by virtue of mandate

FROM NAMIBIA – OPPORTUNITIES (*MODIFIED)

1. Building a spatially-enabled society and e-government
2. Raising public awareness (accountability and transparency)
3. Orderly spatial planning, decision making and policy design
4. Building new markets, results in increased government revenue through taxation
5. Leveraging government resources, avoidance of duplication
6. Shared competence across government
7. IGIF* is an international best practice.

CONCLUSION

- Now it is up to each of us to respond and contribute