



# Implementing the GSGF at the country level

Mr Jerker Moström, Statistics Sweden

# Top 5 actions

- Top 5 current items in terms of impact
- In line with, or in support of, GSGF
- Not necessarily triggered by the GSGF
- All ongoing or work in progress

# PRINCIPLES

- Accessible & usable
- Statistical and geospatial interoperability
- Common geographies for dissemination of statistics
- Geocoded unit record data in a data management environment
- Use of fundamental geospatial infrastructure and geocoding

Fundamental data initiative

# KEY ELEMENTS

- Standards and Good Practices
- National Laws and Policy
- Technical Infrastructure
- Institutional Collaboration

# INPUT

Geospatial

- Fundamental data
- Supplementary data
- New data sources

Statistical

- Censuses
- Surveys
- Administrative data records
- Big data and other sources

# OUTPUT

Integration

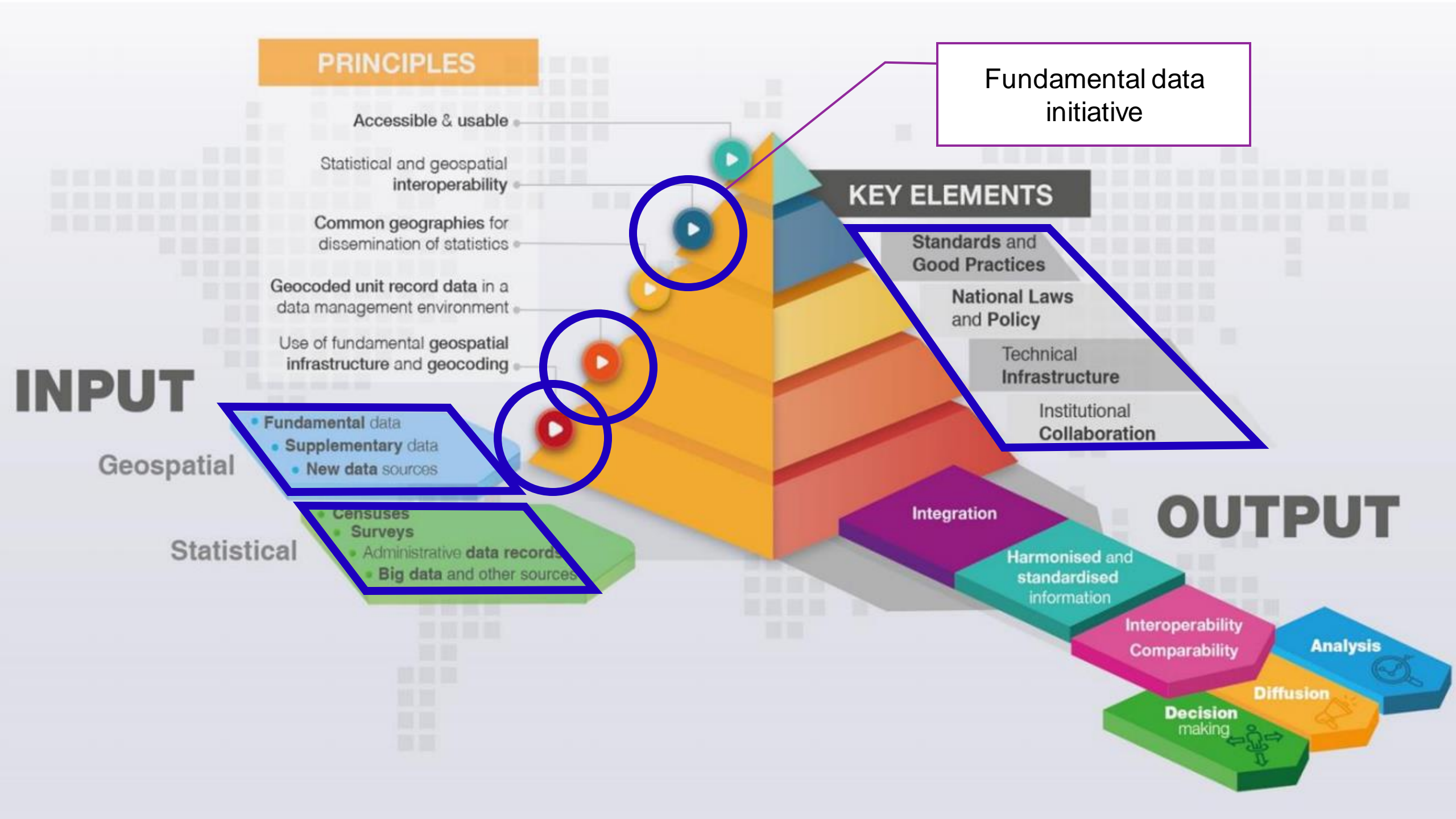
Harmonised and standardised information

Interoperability  
Comparability

Diffusion

Analysis

Decision making



# Fundamental data initiative

- "Safe, effective and interoperable exchange of fundamental data in public sector"
- Agency for Digital Government, NMCA, Tax Authority, Swedish Companies Registration Office (admin data community)
- A national public data ecosystem
  - Increased interoperability
  - Increased data flow
  - Decreased redundancy in data collection and storage
- Define data domains (clear custodianship roles). Fundamental Data Objects: Individuals, companies, real property



# PRINCIPLES

Accessible & usable

Statistical and geospatial interoperability

Common geographies for dissemination of statistics

Geocoded unit record data in a data management environment

Use of fundamental geospatial infrastructure and geocoding

New local level geography

Standards and Good Practices

National Laws and Policy

Technical Infrastructure

Institutional Collaboration

# INPUT

Geospatial

- Fundamental data
- Supplementary data
- New data sources

Statistical

- Censuses
- Surveys
- Administrative data records
- Big data and other sources

# OUTPUT

Integration

Harmonised and standardised information

Interoperability Comparability

Analysis

Diffusion

Decision making



# New local level geography

- Sub level to local administrative units
- Approx. 6 000 areas
- Optimised for demographic and socio-economic analysis (min 650/max 2 900 individuals)
- New detailed level for official statistics
- Used to measure deprived areas and segregation



# PRINCIPLES

Accessible & usable

Statistical and geospatial interoperability

Common geographies for dissemination of statistics

Geocoded unit record data in a data management environment

Use of fundamental geospatial infrastructure and geocoding

More open data!

## KEY ELEMENTS

Standards and Good Practices

National Laws and Policy

Technical Infrastructure

Institutional Collaboration

# INPUT

## Geospatial

- Fundamental data
- Supplementary data
- New data sources

## Statistical

- Censuses
- Surveys
- Administrative data records
- Big data and other sources

# OUTPUT

Integration

Harmonised and standardised information

Interoperability  
Comparability

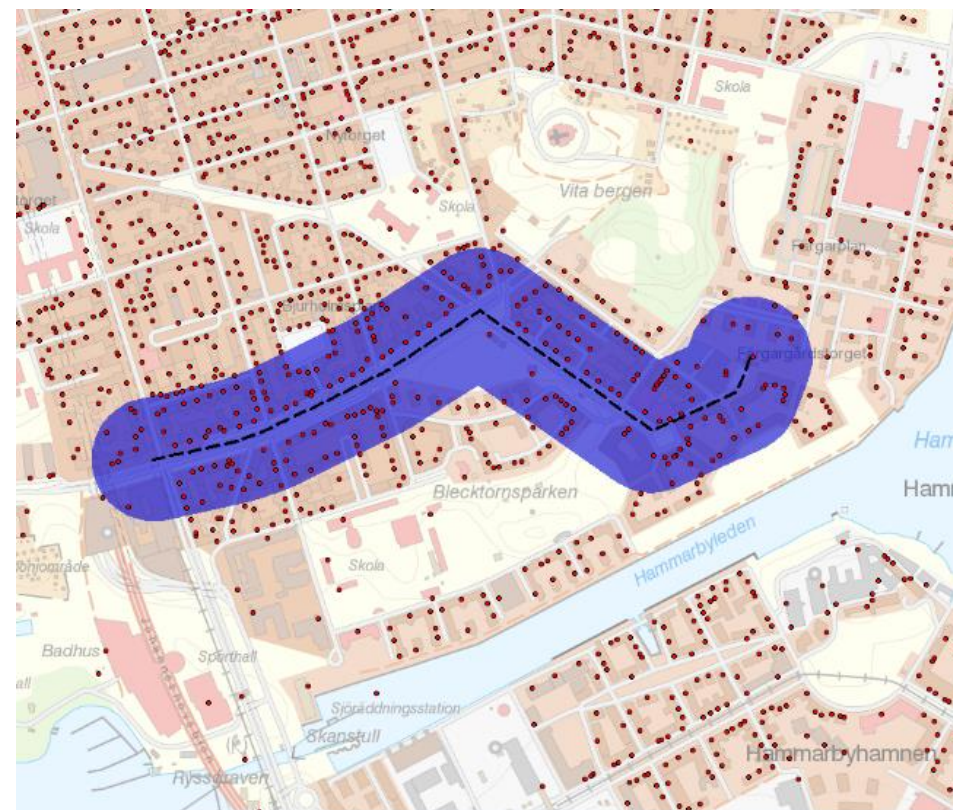
Diffusion

Analysis

Decision making

# More open data

- Increased number of geospatial statistical themes as open data
- Map tool to facilitate access to open data (new interface)
- "Geospatial statistics as a service" – tool to extract customised statistics for user defined areas
- "Neighbourhood statistics"
- Challenge no 1 = disclosure and privacy!





# PRINCIPLES

Accessible & usable

Statistical and geospatial interoperability

Common geographies for dissemination of statistics

Geocoded unit record data in a data management environment

Use of fundamental geospatial infrastructure and geocoding

Improved platform for geospatial services

## KEY ELEMENTS

Standards and Good Practices

National Laws and Policy

Technical Infrastructure

Institutional Collaboration

Integration

Harmonised and standardised information

Interoperability Comparability

Diffusion

Decision making

Analysis

# INPUT

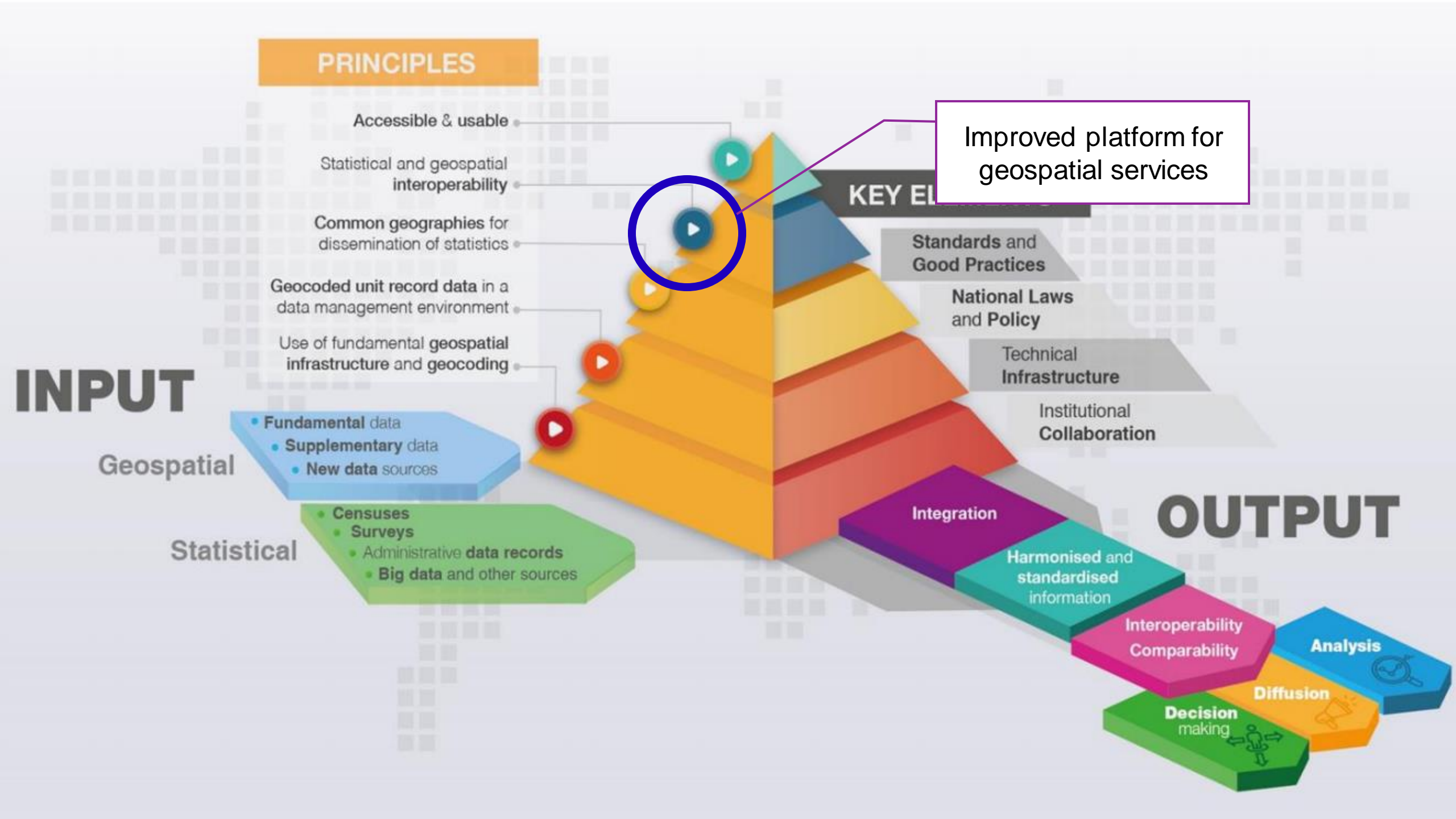
Geospatial

- Fundamental data
- Supplementary data
- New data sources

Statistical

- Censuses
- Surveys
- Administrative data records
- Big data and other sources

# OUTPUT



# Platform for geospatial services

- Many geospatial data layers are openly available through our web
- Low service level (1 out of 5 stars in open data ranking)
- Modify current platform to provide machine-readable services (view and download)
- More effective back-end data management
- Vision: All geographies used for dissemination of official statistics available as services (including historical, starting at 1952 and onwards)

# PRINCIPLES

- Accessible & usable
- Statistical and geospatial interoperability
- Common geographies for dissemination of statistics
- Geocoded unit record data in a data management environment
- Use of fundamental geospatial infrastructure and geocoding

# KEY ELEMENTS

Standards and Good Practices

National Laws and Policy

Technical Infrastructure

Institutional Collaboration

New national geospatial data strategy

# INPUT

## Geospatial

- Fundamental data
- Supplementary data
- New data sources

## Statistical

- Censuses
- Surveys
- Administrative data records
- Big data and other sources

# OUTPUT

Integration

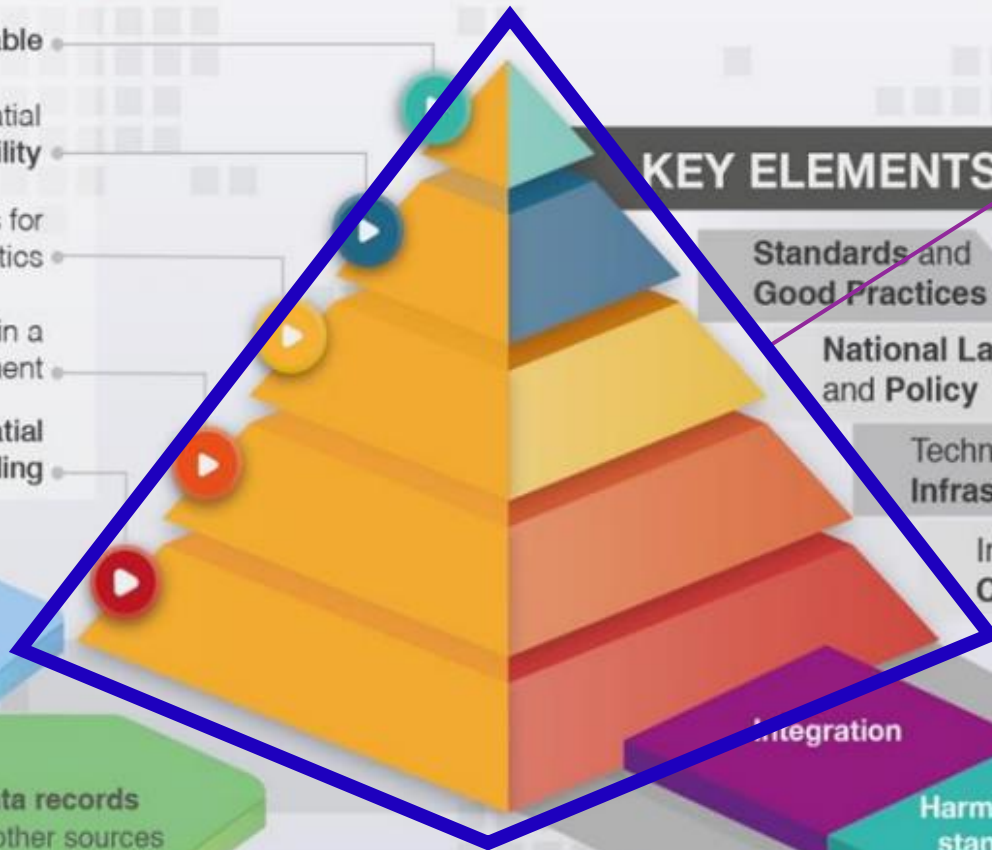
Harmonised and standardised information

Interoperability  
Comparability

Diffusion

Analysis

Decision making



# New national geospatial data strategy

- Revision of current national geospatial data strategy 2016-2020
- Under the National Geospatial Data Council
- Opportunity to more clearly address the provisions of GSGF (along with the IGIF)
- Reflect movement from geospatial data to data with geo-location
- Put data integration higher on the agenda



