

Fifth expert meeting of the Working Group on Geospatial Information of the IAEG-SDGs

Geospatial Information for Sustainable Development

6th – 7th November 2018
Tribe Hotel, Nairobi, Kenya

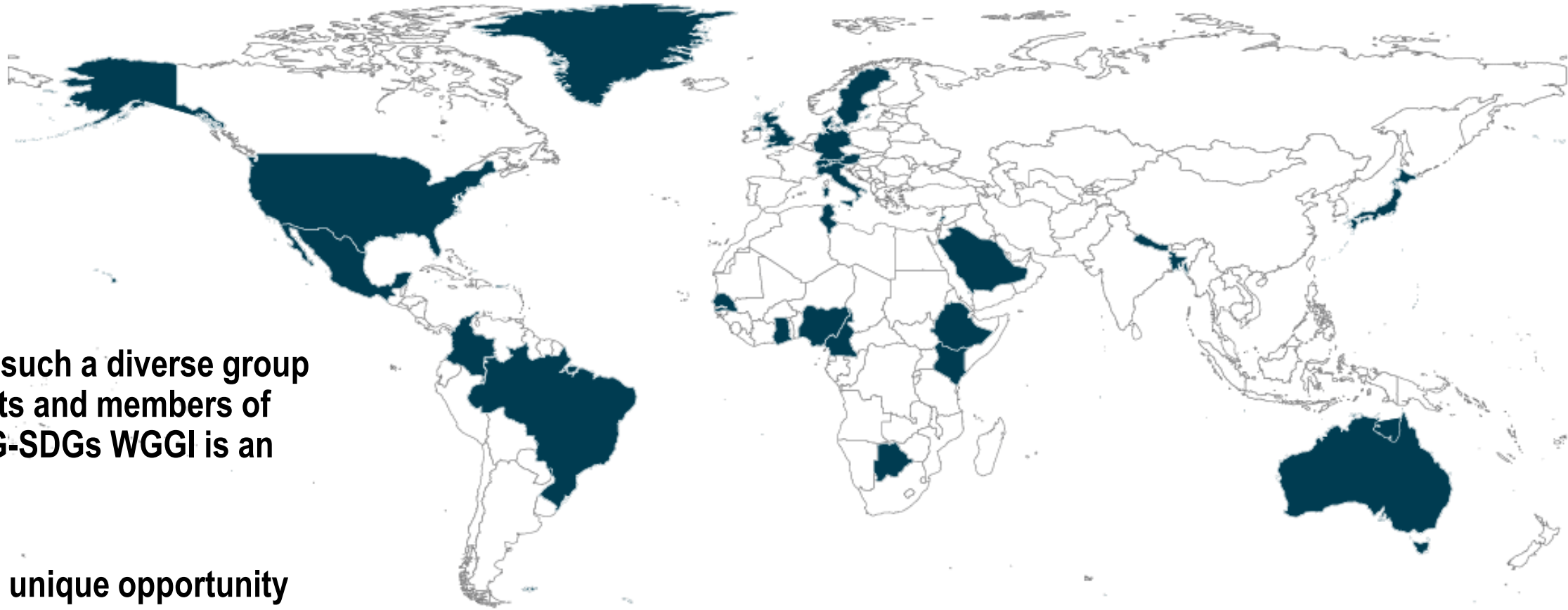
Robert Ndugwa

Chief Global Urban Observatory / Data and Statistics Unit
Research and Capacity Development Branch
UN-HABITAT





**Warm greetings from the Executive
office of UN-Habitat**



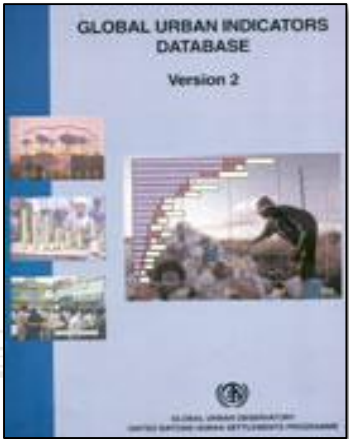
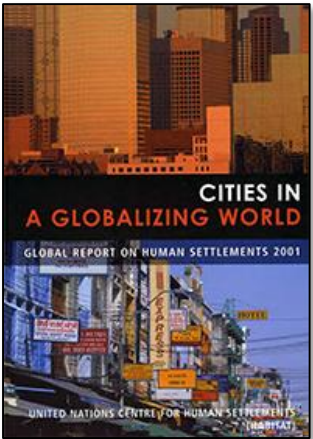
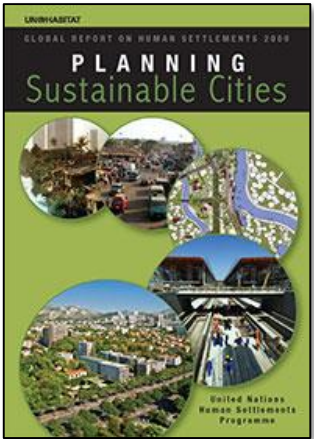
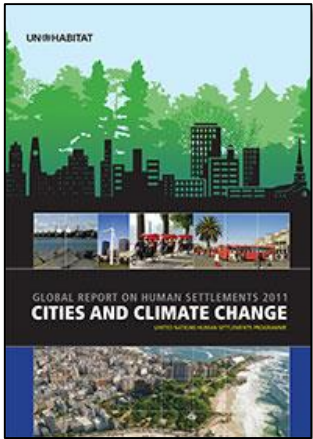
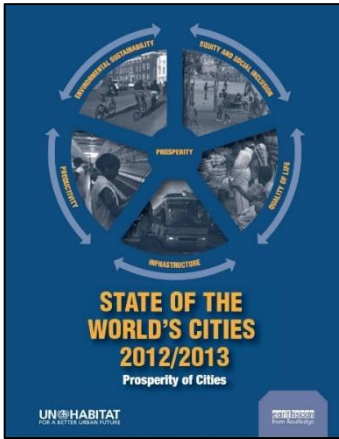
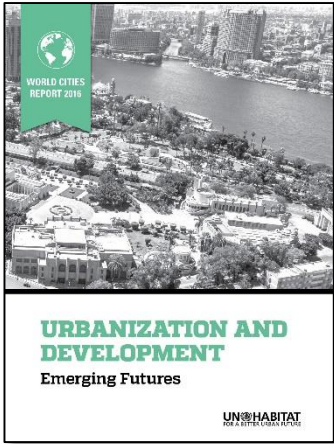
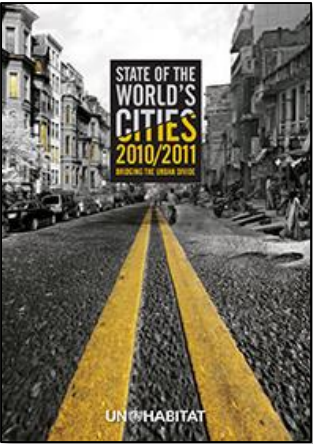
- **Hosting such a diverse group of experts and members of the IAEG-SDGs WGGI is an honor. .**
- **This is a unique opportunity to learn, share our work and get feedback.**



Our mandate: Sustainable urbanization

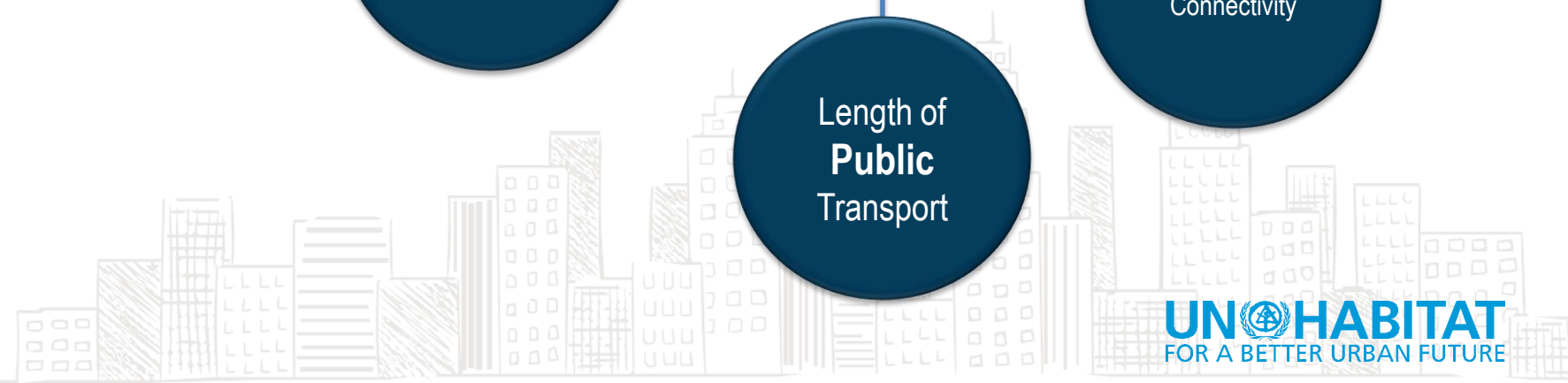
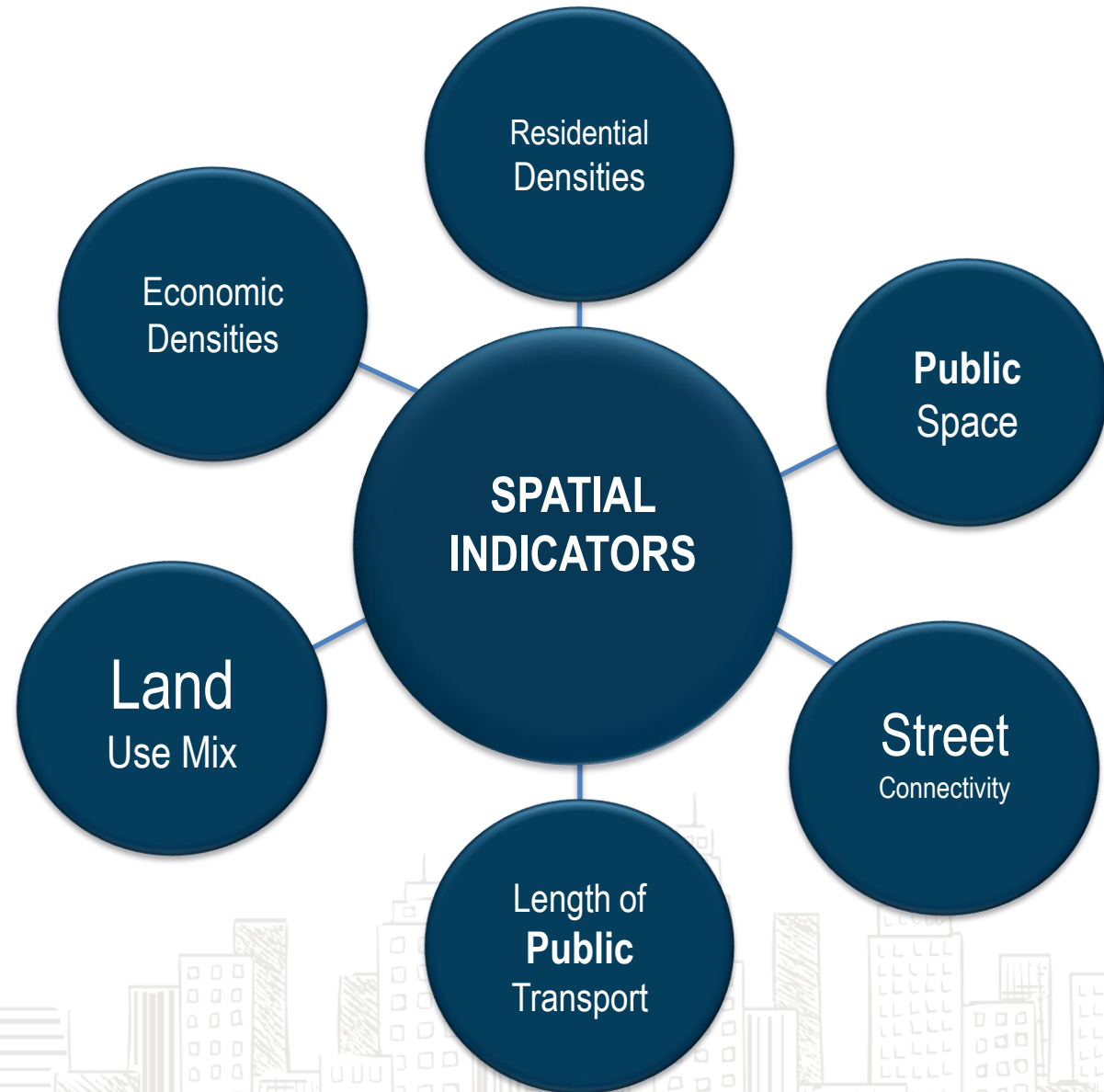


UN-Habitat has more than 40 years of monitoring urban trends



Spatial data is key for urban monitoring

Monitoring experience indicates that its not possible to understand urbanization or transitions in human settlements without integrating spatial data into conventional statistics



Spatial data helps understand urban trends

Suzhou, China 1998. Pop; 5.8M



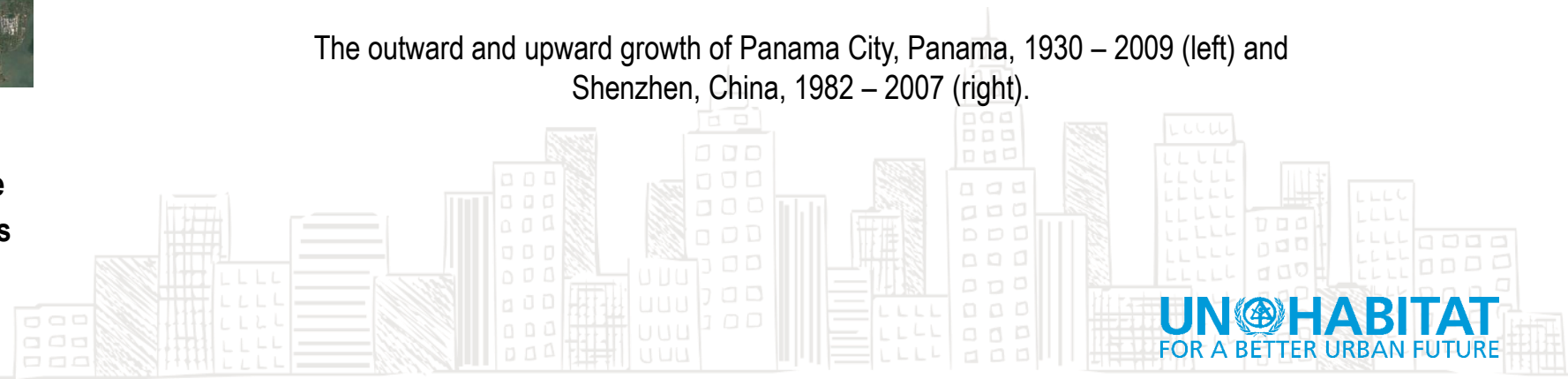
Suzhou, China 2016. Pop (in 2013); 10.58M



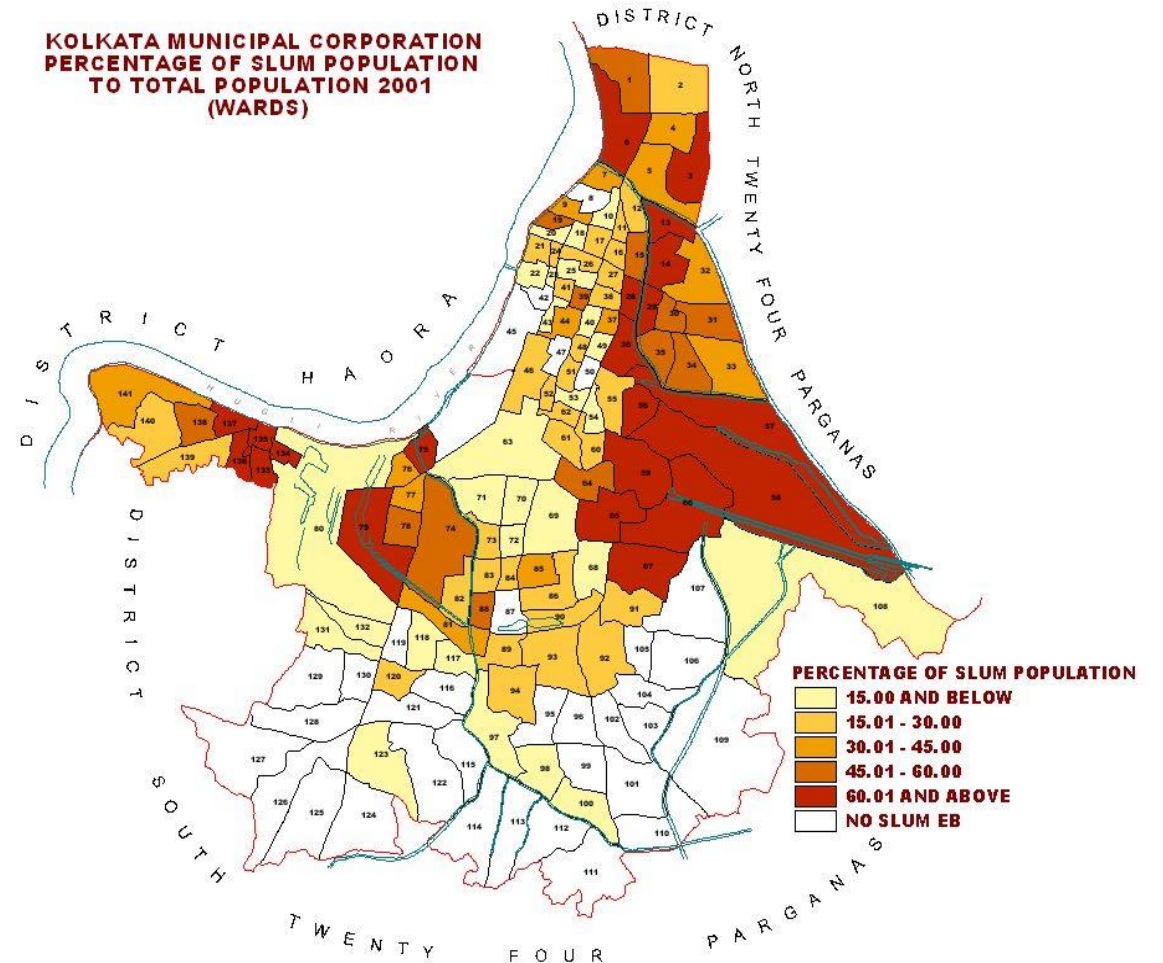
Images via: Skyscraper City, Brian Gratwicke

The outward and upward growth of Panama City, Panama, 1930 – 2009 (left) and Shenzhen, China, 1982 – 2007 (right).

Over the last 20 years, sprawl has dominated urbanization processes - on average, **the rate of land consumption by cities was 1.5 times their rate of population growth.**



Spatial data enables more accurate urban monitoring



We are moving from interpreting what we know to using **spatial** settlement taxonomy and characterization for data extraction

Therefore

We are able to understand the location of **slums** and **informal settlements** better and their spatial structure, and in turn to more accurately estimate disadvantaged populations

Our growing mandate in monitoring



1 Target; (70 proportion of urban population living in slums)



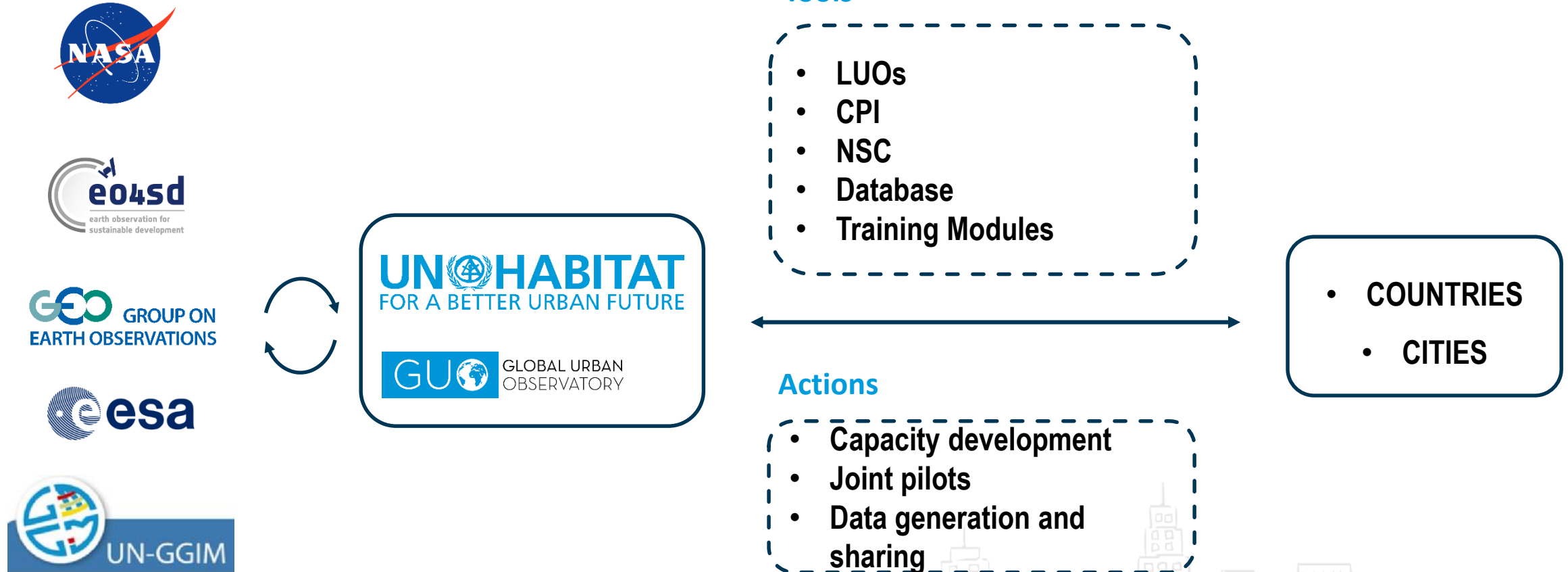
14 global Indicators



200 related Indicators

Workload increased +100 fold – we need help from geospatial & EO community

Effective monitoring requires support from geospatial & EO community



Tools

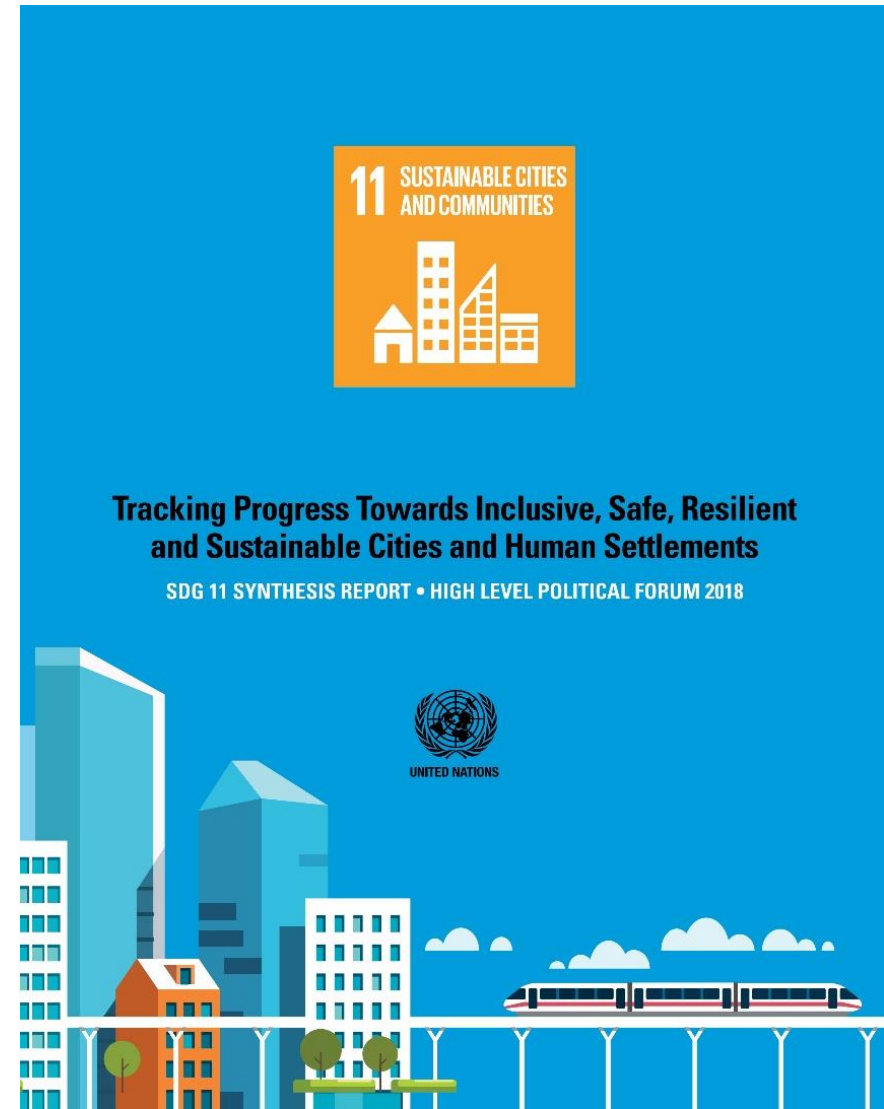
- LUOs
- CPI
- NSC
- Database
- Training Modules

Actions

- Capacity development
- Joint pilots
- Data generation and sharing

- COUNTRIES
- CITIES

- UN-Habitat will support Biannual reporting of urban SDGs through SDG 11 synthesis report series.
- Report to show / analyze global and regional strengths and give directions for sustainable urbanization



Welcome to Nairobi
Karibu Kenya

