



INFORMACIÓN PARA TODOS

Urban land consumption rate using geospatial technologies: The Colombian experience

SDG indicator 11.3.1: Ratio of land consumption rate to population growth rate

November 2018



GOBIERNO
DE COLOMBIA



DANE
INFORMACIÓN ESTRATÉGICA



Goal 11: Make cities inclusive, safe, resilient and sustainable

Target 11.3.1: by 2030 enhance inclusive and sustainable urbanization and capacities for participatory, integrated and sustainable human settlement planning and management in all countries

Indicator 11.3.1: Ratio of land consumption rate to population growth rate



Advances

2015

Pilot project
Barranquilla



2016

Time processing
optimization



2017

Calculation for 138
cities (2003 -2015)



2018

Results
socialization





SDG Indicator 11.3.1: DANE Methodology

As a measure of land-use efficiency, indicator 11.3.1 benchmarks and monitors the relationship between land consumption and population growth

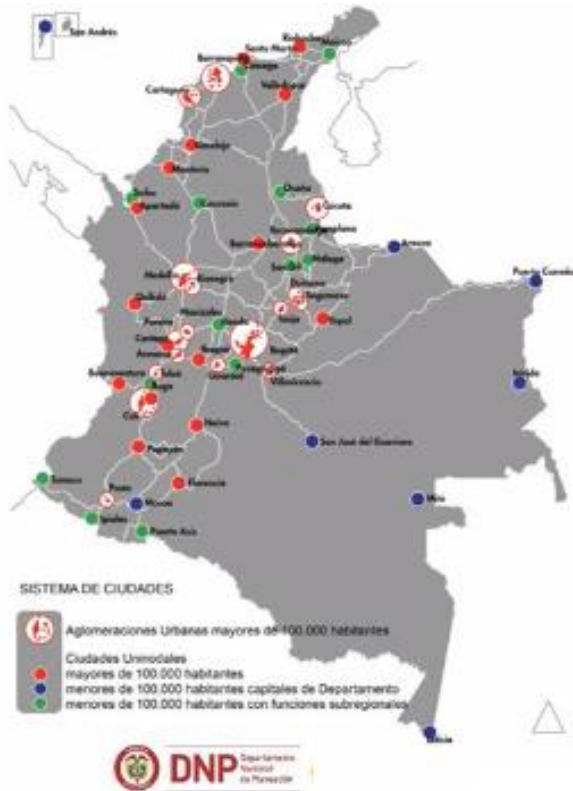
$$\text{SDG 11.3.1} = \frac{\text{Land consumption rate}}{\text{Population growth rate}}$$



Sources:

- Landsat images to calculate **land consumption rate**
- Population projections (2003 y 2015)

The indicator 11.3.1 was calculated for 138 Colombian cities



- 62.7% urban population
- Functional cities or urban agglomerations: Set of contiguous cities and urban centers between which there are functional relations in terms of labor commutation.
- Cities with an urban population equal to or greater than 100.000 inhabitants in 2010.
- Departmental capitals with less than 100.000 inhabitants.
- Cities with lesser than 100.000 inhabitants with a strategic hierarchy at the national level.

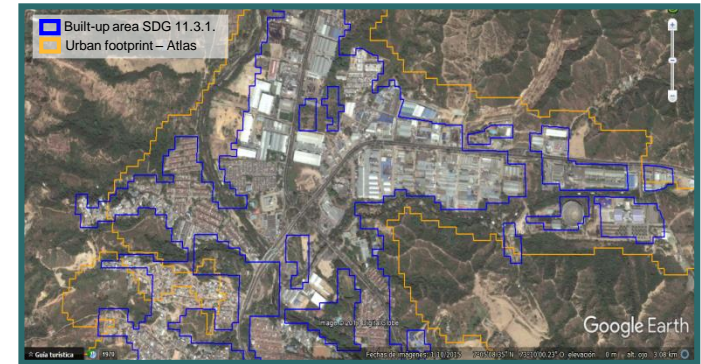
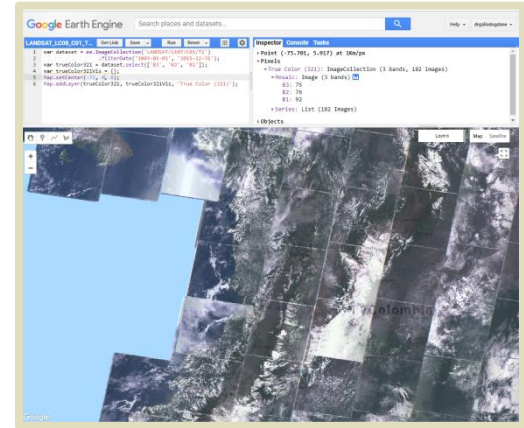
Satellite imagery processing

Selection of Landsat (cloud free images)

Supervised classification:
Identification of the built-up area

Processing images:
Geometrical correction

Post classification comparison (2003 – 2015) to estimate change



Allowed to optimize the processing and classification of the images since there are configurable scripts that facilitate the replication in other zones.



INFORMACIÓN PARA TODOS

Results

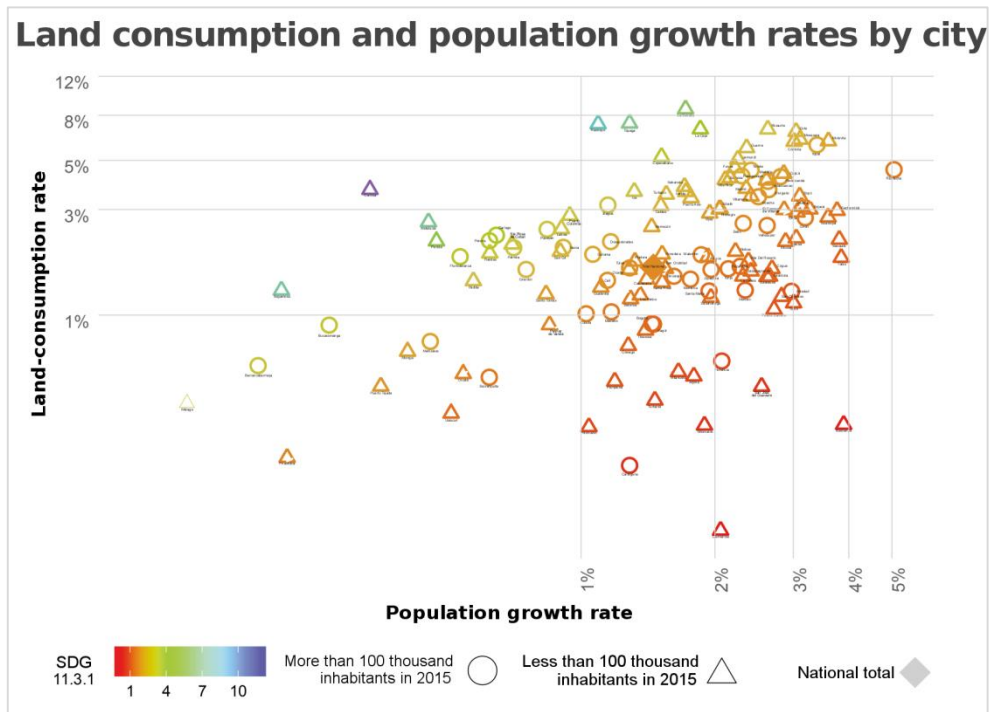


GOBIERNO
DE COLOMBIA



DANE
INFORMACIÓN ESTRATÉGICA

- The national land consumption rate was calculated from the total sum of the built-up area of the 138 cities in 2003 and 2015
- The national population growth rate was calculated from the sum of the projections of inhabitants in these cities for 2003 and 2015
- The national land consumption rate was 1,65, the national population growth rate was 1,45 and the SDG 11.3.1 was 1.14



SDG Indicator 11.3.1 in the 138 Colombian cities during 2003-2015

80 Colombian cities have an indicator greater than 1. It means that its land consumption rate is higher than population growth rate

Percentage of cities with an indicator **greater than 1**



Percentage of cities with an indicator **lesser than 1**

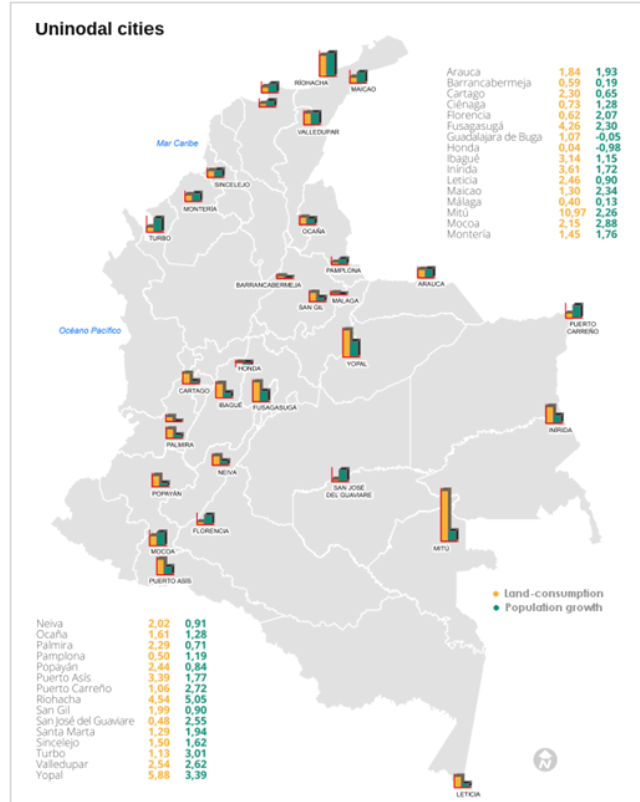
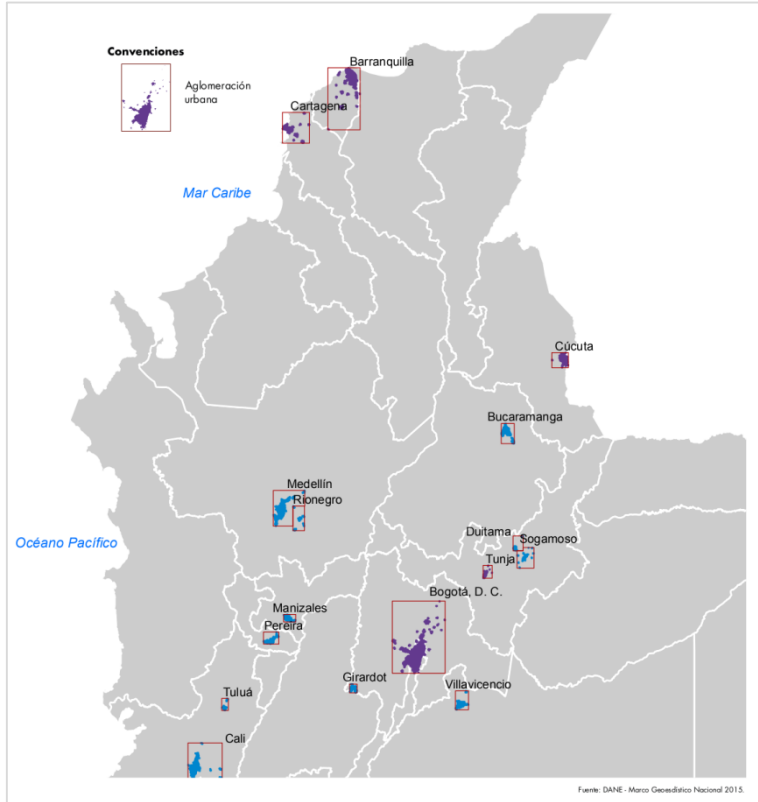


Average of land consumption rate **2,5 %**

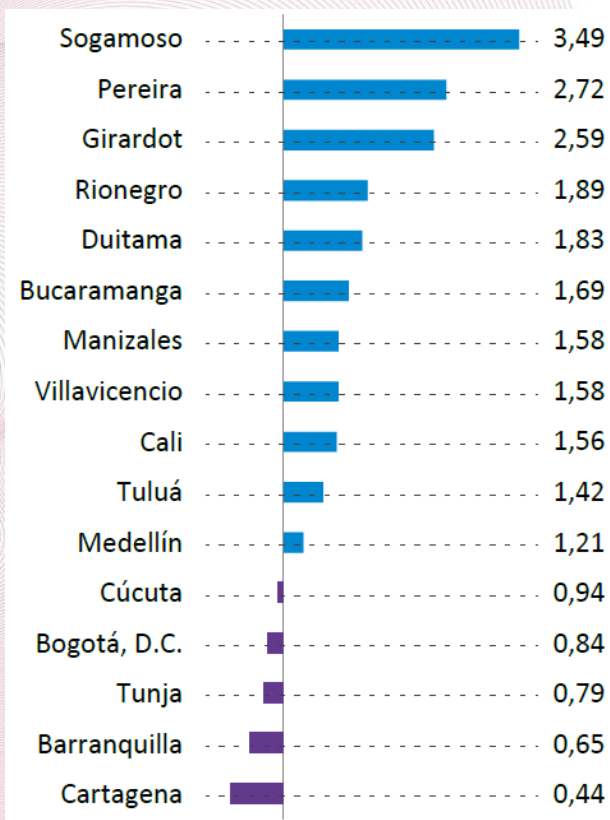


Average of population growth rate **1.8 %**

The indicator 11.3.1 was calculated for 138 Colombian cities



Indicator 11.3.1 for the Colombian urban agglomerations

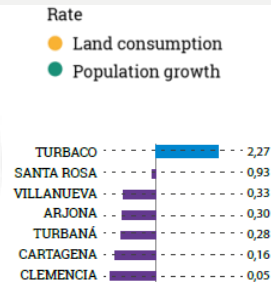
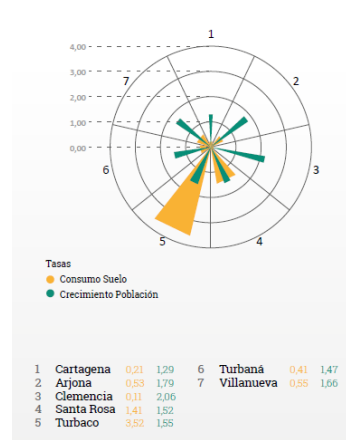
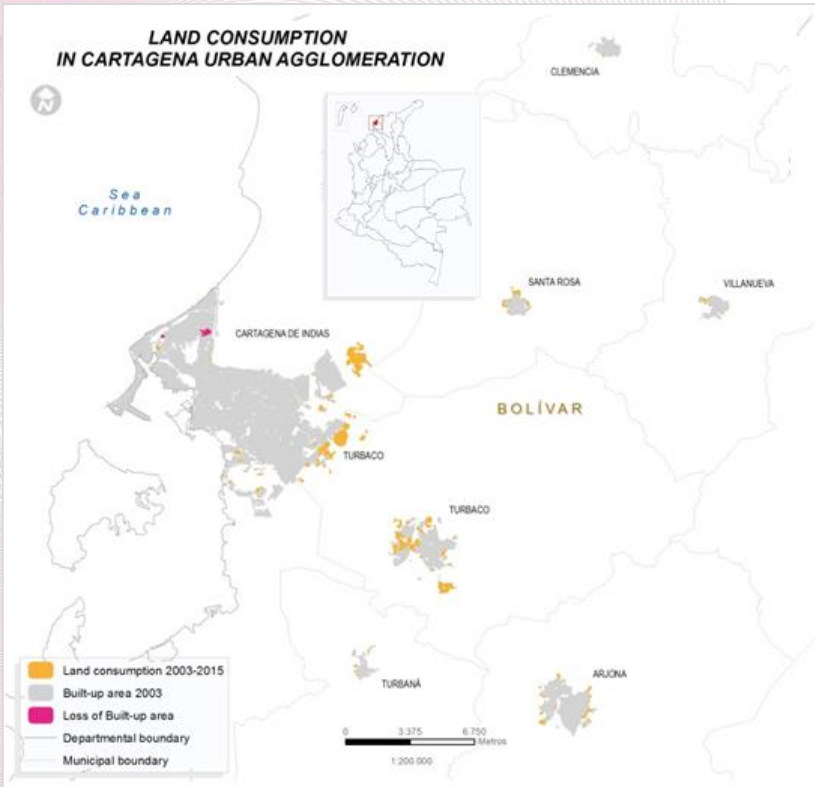


- Of the 16 urban agglomerations studied, 11 have higher land consumption in relation to the population growth rate.
- The urban agglomeration of Cartagena has the lowest indicator.

■ Land consumption rate **Lower** than population growth rate
 ■ Land consumption rate **greater** than population growth rate

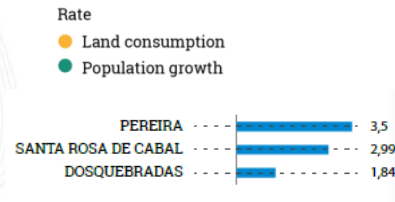
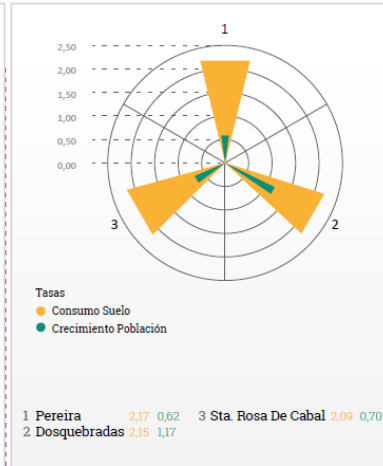
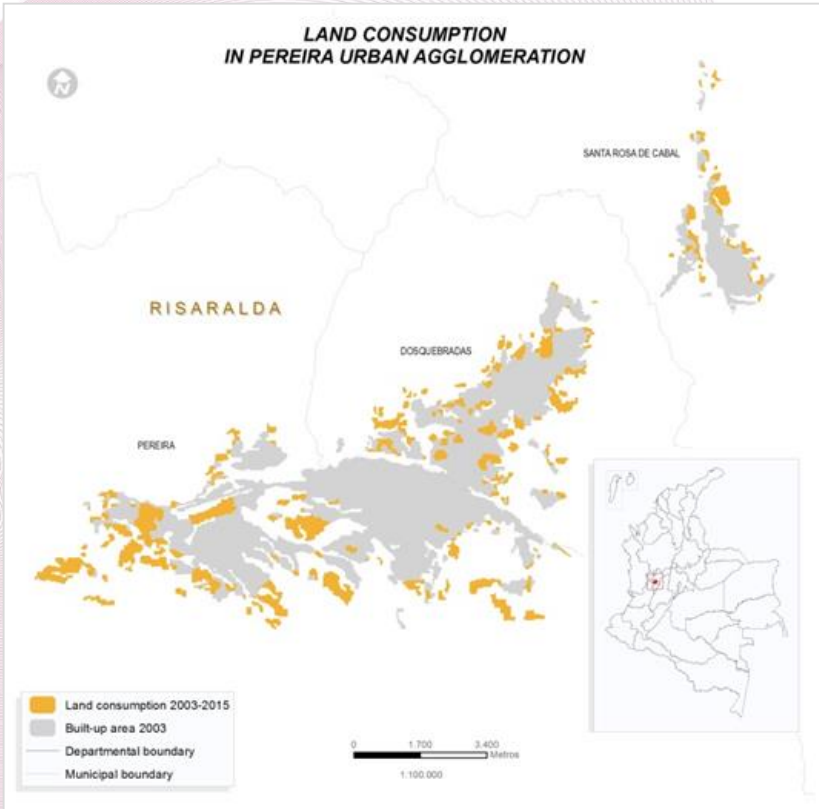


Cartagena urban agglomeration



With the exception of Turbaco, the cities from the urban agglomeration of Cartagena have a rate of land consumption lower than the population growth rate

Pereira urban agglomeration



The urban agglomeration of Pereira include the cities of Pereira, Santa Rosa de Cabal and Dosquebradas, which have a land consumption rate higher than the population growth rate.

Moving forward

Results socialization

- Bulletin
- Geographical files
- Methodology document
- Scripts
- Statistics in different formats



CENSO NACIONAL DE POBLACIÓN Y VIVIENDA 2018 · COLOMBIA



GOBIERNO
DE COLOMBIA



DANE
INFORMACIÓN ESTRATÉGICA



INFORMACIÓN PARA TODOS

Thank you



GOBIERNO
DE COLOMBIA



DANE
INFORMACIÓN ESTRATÉGICA



@DANE_Colombia



/DANEColombia



/DANEColombia