



Republic of the Philippines

**Philippine Statistics Authority**

# **National SDG Data Hubs: Statistical integration and geographic disaggregation (Philippines)**

**5<sup>th</sup> High Level Forum on United Nations**

**Global Geospatial Information Management**

Implementing the Sustainable Development Goals:

The Role of Geospatial Technology and Innovation

Mexico City, Mexico

November 28 – 30, 2017

# **Outline of Presentation**

- I. Status of Philippine Data Hub Project**
- II. Updating SDG data and Data Hub**
- III. Open Data Initiatives**
- IV. Linking SDG and Data Hub to National Outcome**
- V. Country work on integrating statistical and geospatial information**
- VI. Data Hub (available data)**

# Status of Philippine Data Hub Project

- <http://mapstat-psa.opendata.arcgis.com/>
- Servers
- ArcGIS software

# Data Hub

A screenshot of the mapstat-psa.opendata.arcgis.com website. The browser address bar shows the URL. The website header is blue with the PSA logo and a "Sign In" button. The main content area has a white background with a blue heading "Open Data on Maps!". Below this is a paragraph explaining the site's purpose. A blue banner with white text states "This site is under construction and data published here are not official!". Below the banner is a section titled "Explore Data Categories" with five icons and their corresponding category names: Sustainable Development Goals, Agriculture, Forestry and Fisheries, Domestic and Foreign Trade, Industry, Trade and Services, and Environment and Energy.

mapstat-psa.opendata.arcgis.com

PHILIPPINE STATISTICS AUTHORITY  
Socio • Responsive • World-Class

Sign In

## Open Data on Maps!

This site complements PSA OpenSTAT portal allowing data users to visualize data on maps. Users can also explore and download published data, discover and build web maps and apps, and analyze and combine datasets using maps.

This site is under construction and data published here are not official!

## Explore Data Categories

- Sustainable Development Goals
- Agriculture, Forestry and Fisheries
- Domestic and Foreign Trade
- Industry, Trade and Services
- Environment and Energy

# Data Hub



# Updating SDG data and the Data hub

- Republic Act No. 10625
- Poverty and Human Development Statistics Division

# Data Hub

## PSA SDG Team

### Advisers

- **National Statistician**
- **Deputy National Statistician**
- **Assistant National Statistician**
- **Director,**  
Statistical Methodologies Unit
- **Director,**  
International Cooperation Unit

### Team Leader

- **Chief Statistical Specialist**  
Poverty and Human Development  
Statistics Division (PHDSD)

### Overall Coordinator

- **Technical Specialists**  
on SDGs, PHDSD

### Members

- **Sector Specialists for each Goal**



The assessment made on the availability of the SDG indicators in the Philippines showed that out of 244 indicators, 103 indicators are classified as Tier 1 indicators, 59 are Tier 2 indicators, 71 are Tier 3 indicators and 11 indicators are not applicable to the country.

## Open Data Philippines

### Open Data Philippines



**ACCESSIBLE**



**SEARCHABLE**



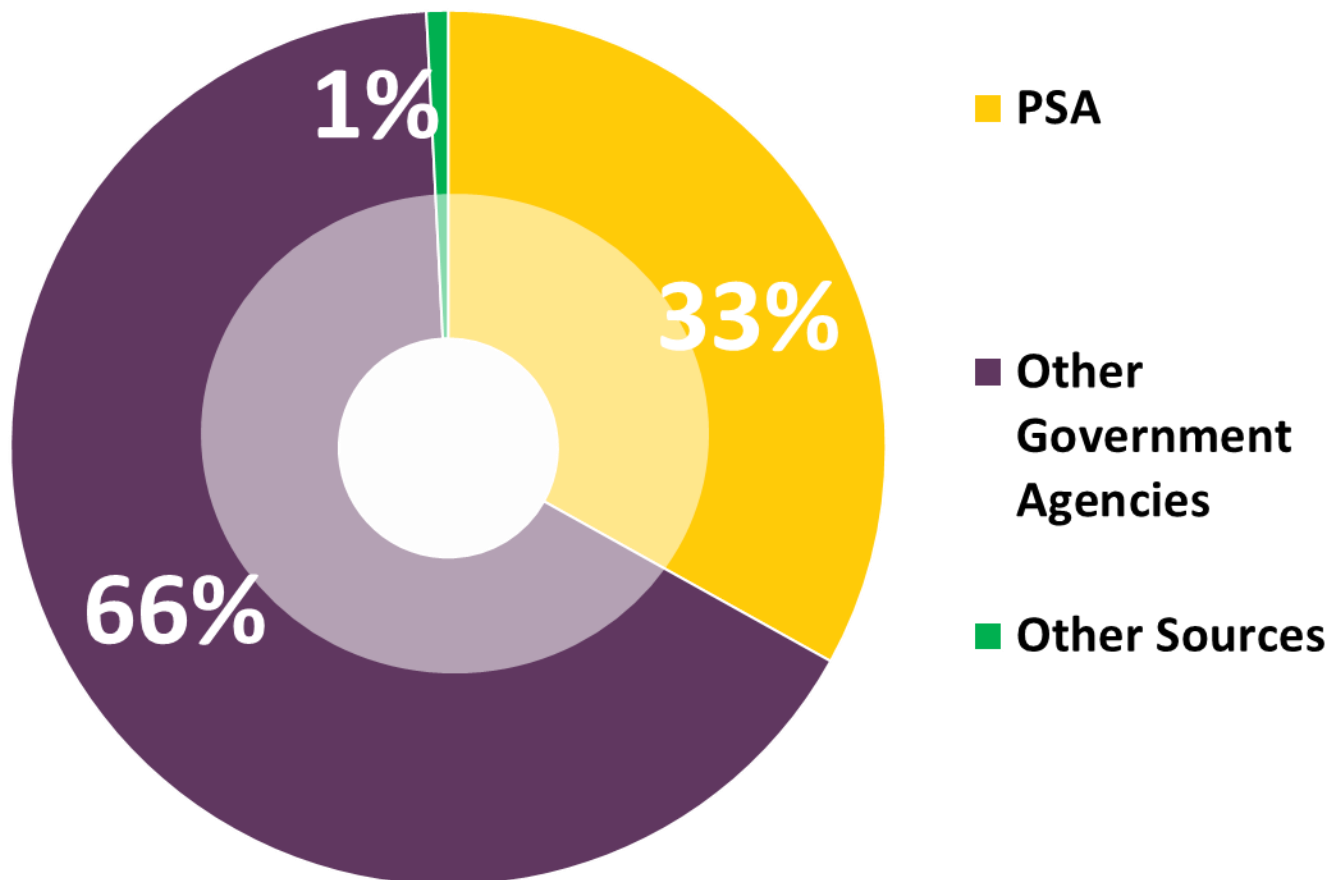
**UNDERSTANDABLE**



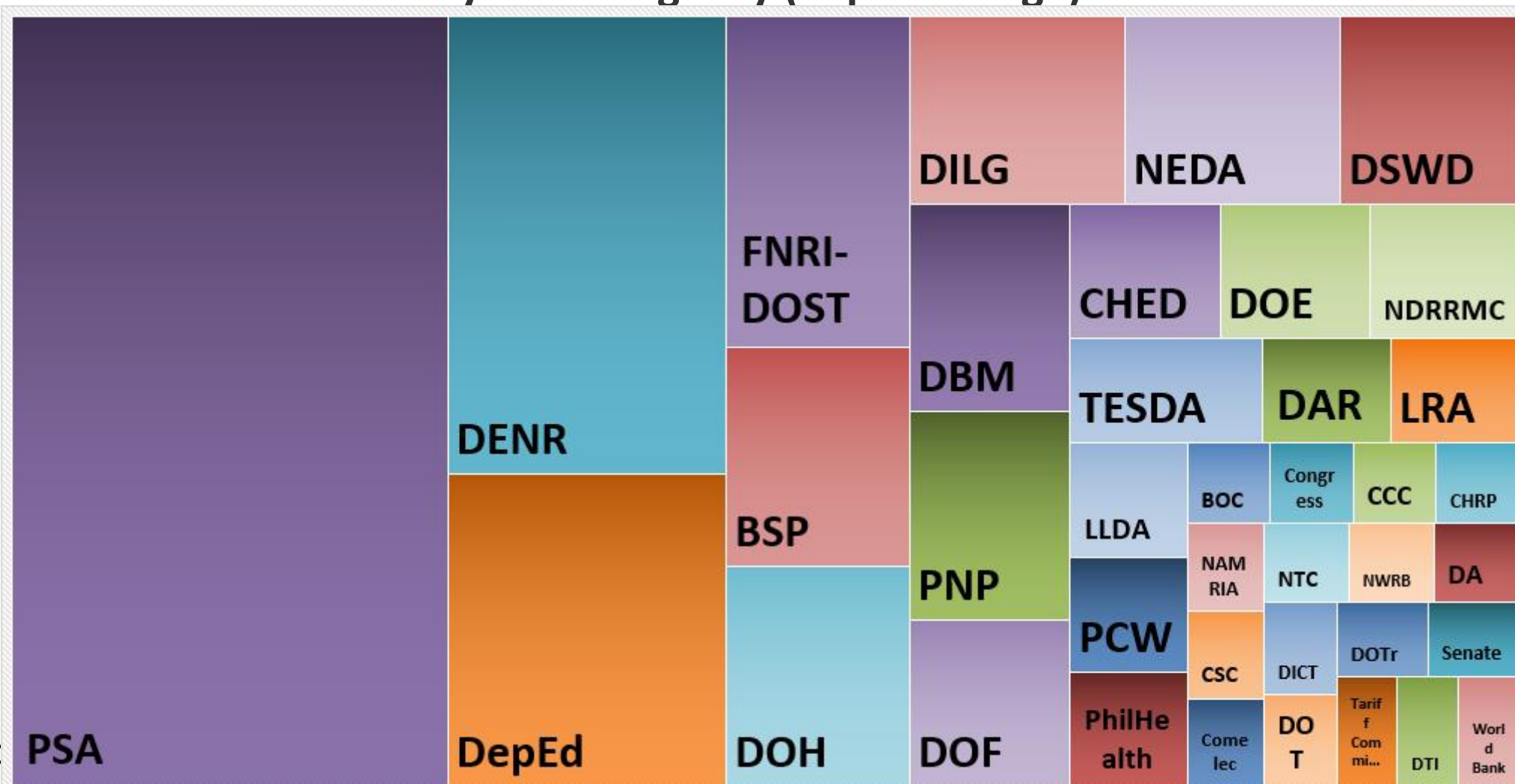
## Open Data Philippines

A blue rectangular box with a white border containing the text "www.gov.ph/data" in white. The background of the box features a white map of the Philippines on a blue background.The logo for Freedom of Information Philippines, featuring the Philippine coat of arms (Sagisag ng Pangulo ng Pilipinas) in the center. Below the coat of arms, the text "FREEDOM OF INFORMATION" is written in white, and "PHILIPPINES" is written in yellow.The text "NATIONAL GOVERNMENT PORTAL" in white, serif, all-caps font, centered on a teal background.

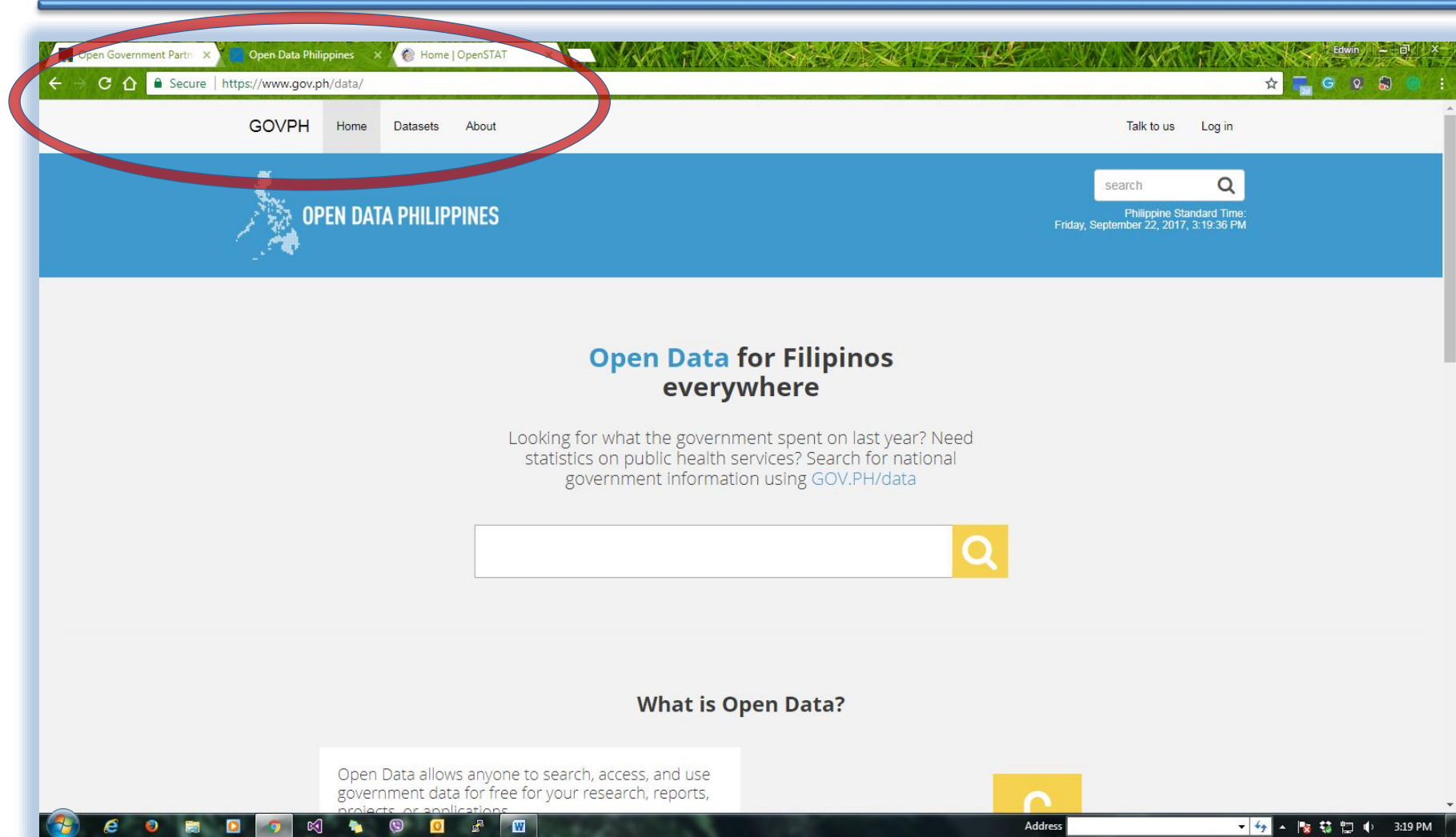
## Distribution of the Initial List of Philippine SDG Indicators, by data source agency



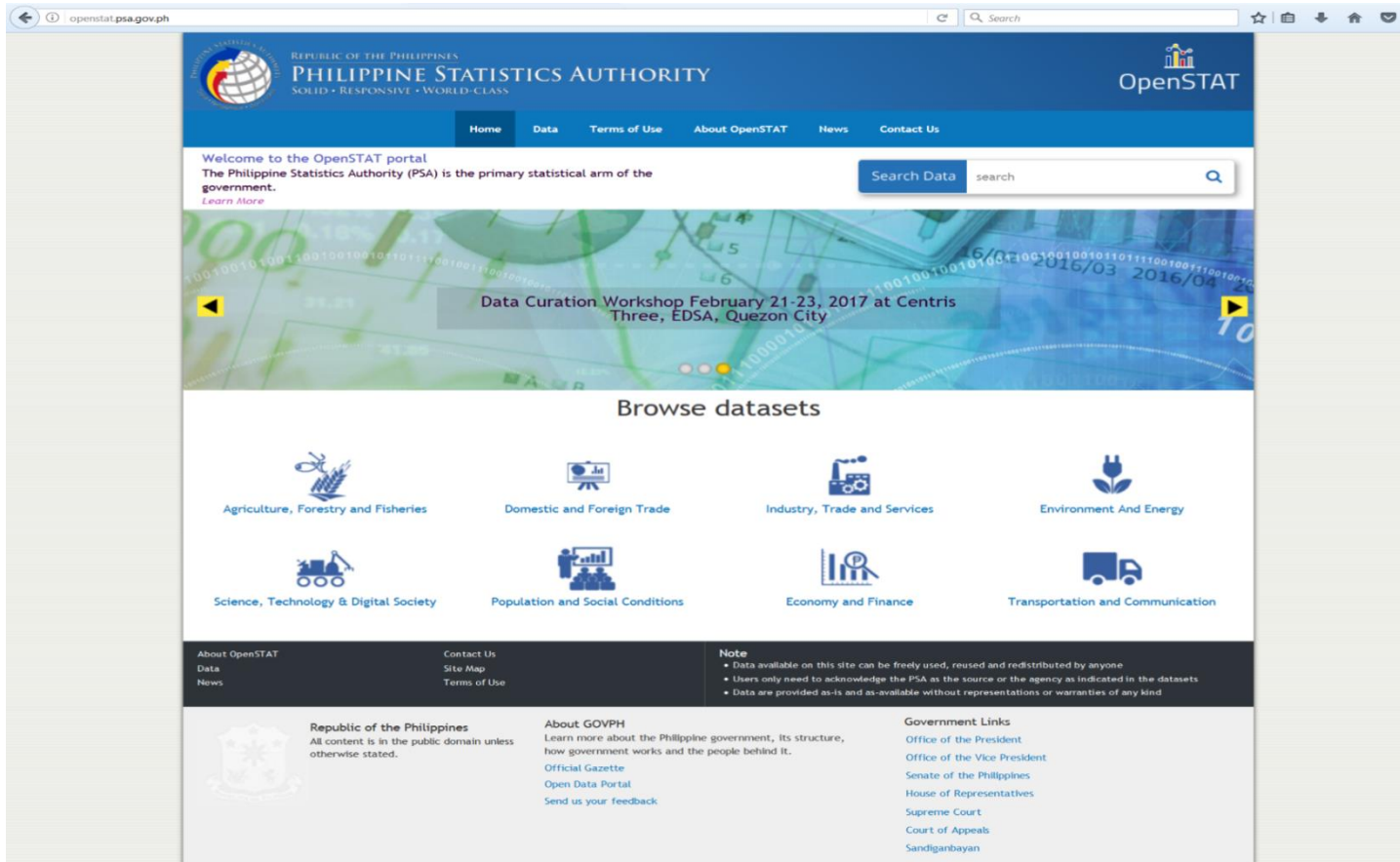
## Distribution of the Initial List of Philippine SDG Indicators, by source agency (in percentage)



# Open Data Portal



<http://openstat.psa.gov.ph/>

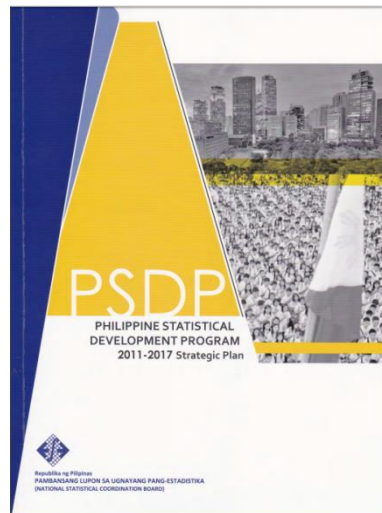
A screenshot of the OpenSTAT portal website. The browser address bar shows "openstat.psa.gov.ph". The website has a blue header with the PSA logo and the text "REPUBLIC OF THE PHILIPPINES PHILIPPINE STATISTICS AUTHORITY SOLID • RESPONSIVE • WORLD-CLASS". The "OpenSTAT" logo is in the top right. A navigation menu includes "Home", "Data", "Terms of Use", "About OpenSTAT", "News", and "Contact Us". Below the header, a welcome message states: "Welcome to the OpenSTAT portal. The Philippine Statistics Authority (PSA) is the primary statistical arm of the government." A search bar with the text "Search Data" and a search icon is present. A large banner image shows a map with a text overlay: "Data Curation Workshop February 21-23, 2017 at Centris Three, EDSA, Quezon City". Below the banner, a section titled "Browse datasets" displays eight categories with icons: Agriculture, Forestry and Fisheries; Domestic and Foreign Trade; Industry, Trade and Services; Environment And Energy; Science, Technology & Digital Society; Population and Social Conditions; Economy and Finance; and Transportation and Communication. The footer contains sections for "About OpenSTAT", "Contact Us", "Note" (stating data is freely used and users must acknowledge the PSA), "Republic of the Philippines", "About GOVPH", and "Government Links" (listing various government offices and courts).

## Linking SDG and Data Hub to National Outcome

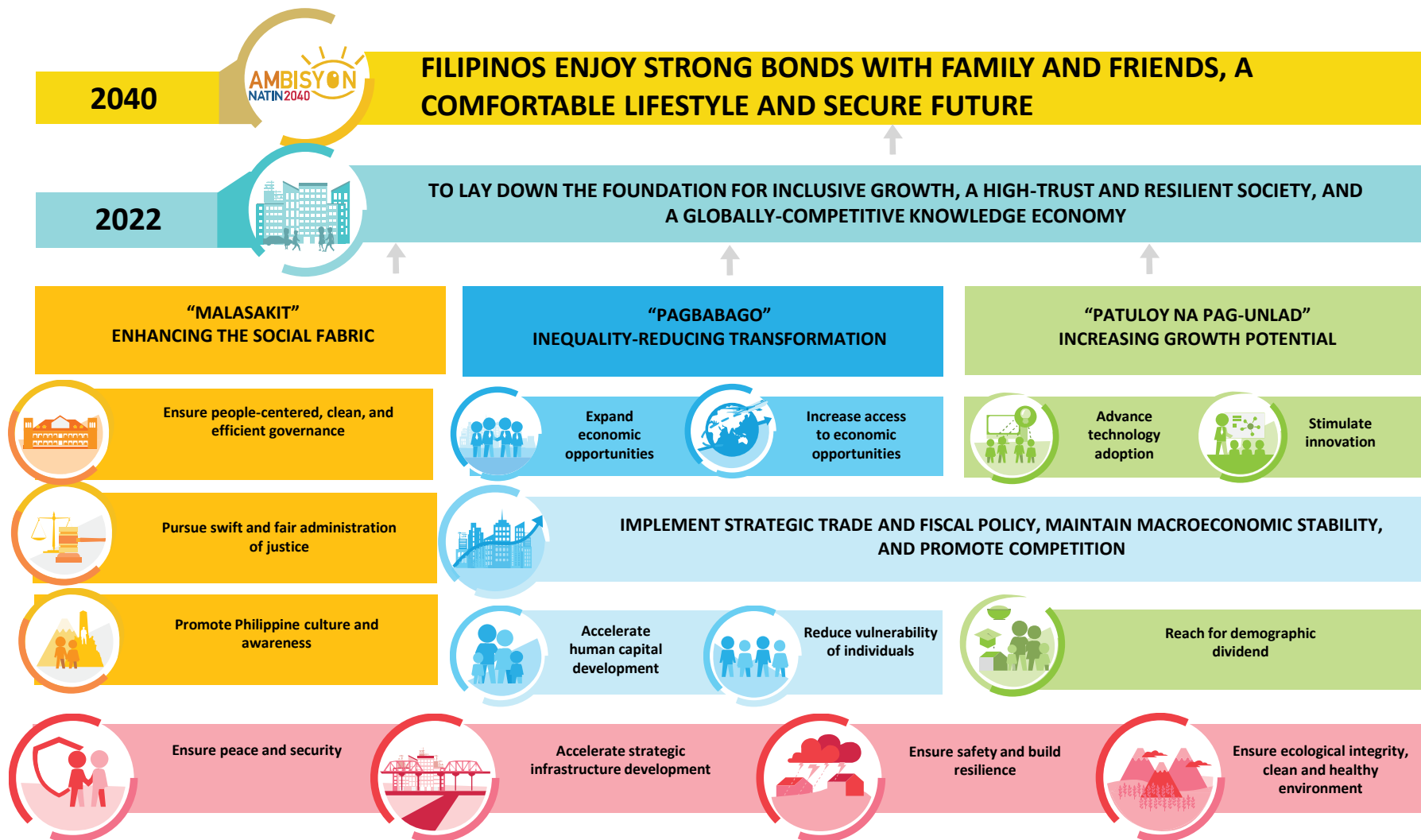
- Ambisyon Natin 2040
- Philippine Development Plan 2017 – 2022
- Philippine Statistical Development Plan
- Inter-Agency Committees
- IAC– Statistical Information Management and Dissemination (SIMD)

## Linking SDG and Data Hub to National Outcome

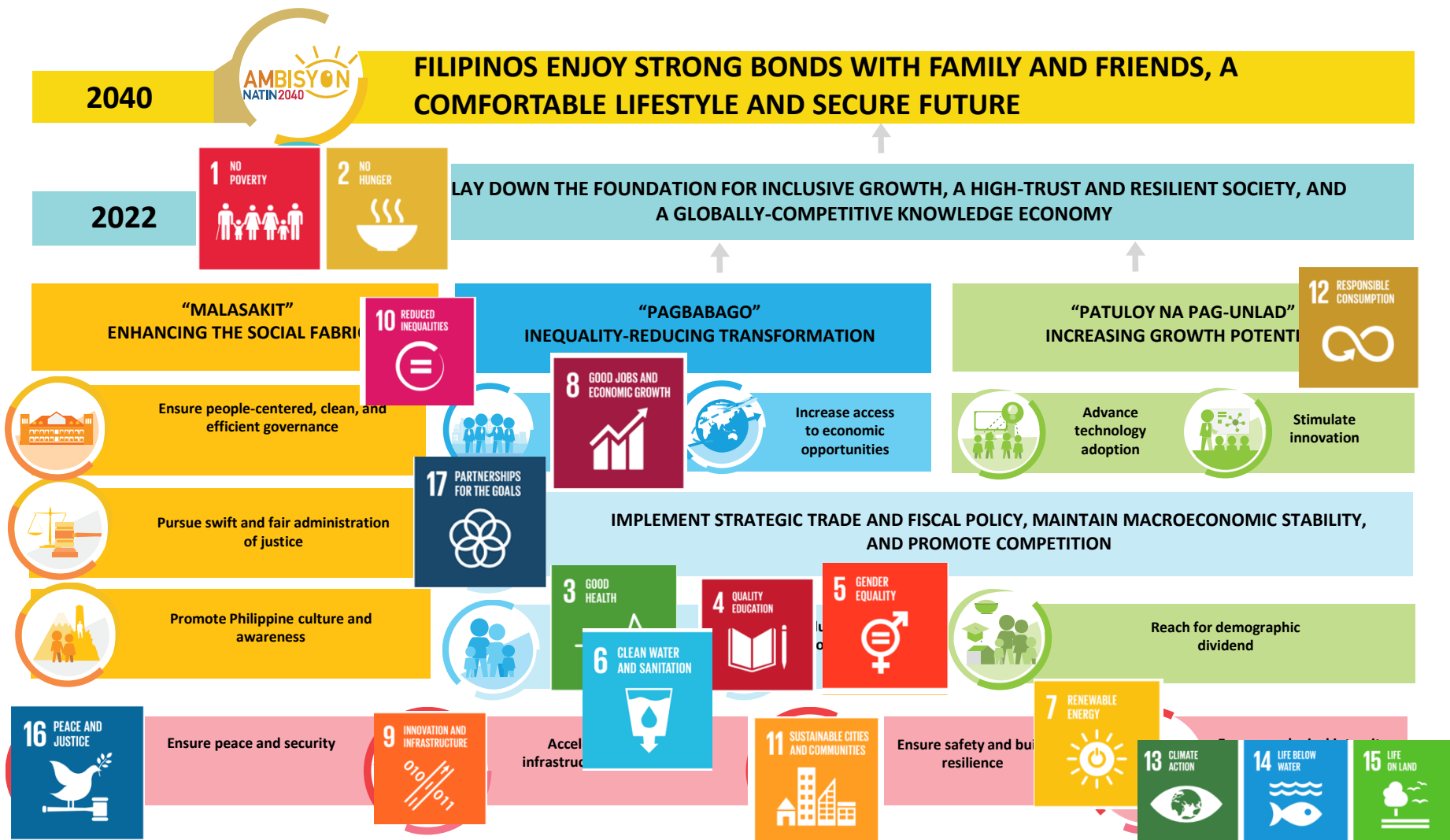
**Inter-Agency  
Committee**







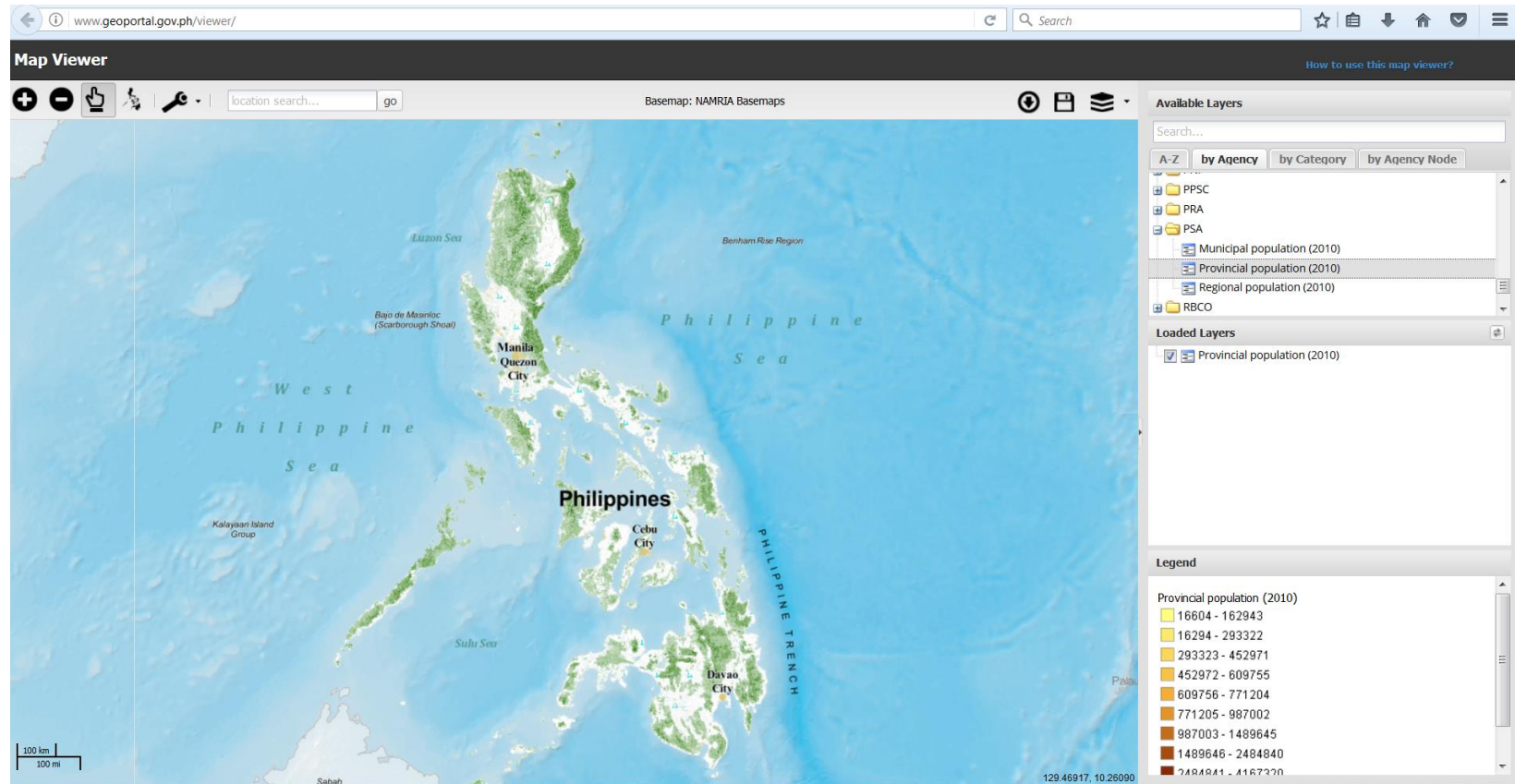






# Country work on integrating statistical and geospatial information

<http://www.geoportal.gov.ph/viewer/>

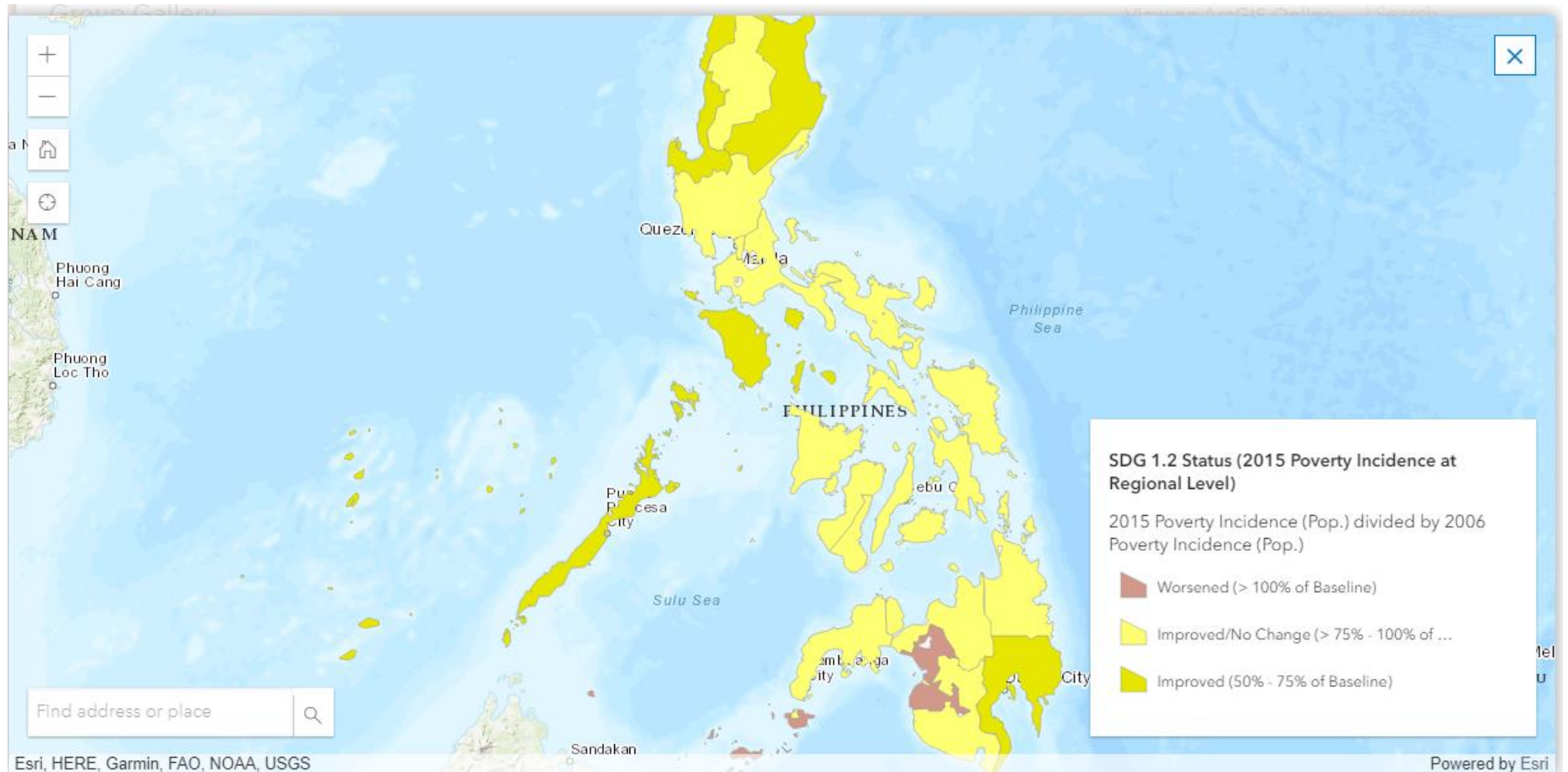


# Philippine Data Hub

## Available Data

- |  |   |
|--|---|
| 1) Employment at National Level                                | 8) Population at Municipality Level       |
| 2) Employment at Regional Level                                | 9) Index Crimes at National Level         |
| 3) Poverty at the National Level                               | 10) Index Crimes at Regional Level        |
| 4) Poverty at the Regional Level                               | 11) Net Enrollment Rate at National Level |
| 5) Poverty at the Provincial Level                             | 12) Net Enrollment Rate at Regional Level |
| 6) Poverty among Population in Basic Sector at Regional Level  | 13) Gross Domestic Product per capita     |
| 7) Poverty among Population in Basic Sector in the Philippines | 14) Gross Regional Domestic Product       |

# Data Hub



# Data Hub

## Philippines' Sustainable Development Goals Status

A story map [f](#) [t](#) [e](#)

Goal 1

Goal 8

At the national level the poverty situation among population has improved a bit compared to the 2006 poverty incidence and at the regional level ([zoom-in to see regional level](#)), almost all areas have the same trend ([click an area to see the trend](#)) as the national level except for Autonomous Region in Muslim Mindanao (ARMM) where the incidence has gone up. But at the provincial level ([zoom-in](#)) the poverty status is not that encouraging because the poverty situation has deteriorated in more than 20 provinces. Worse, there are 6 provinces where poverty incidence has doubled compared to 2006 estimate. On the positive note, There are provinces whose goal of halving the poverty incidence can be considered as achievable and ten (10) have already achieved the target.

### SDG 1.1.2 Status (2015 Poverty Incidence in the Provinces)

2015 Poverty Incidence (Pop.) divided by 2006 Poverty Incidence (Pop.)

- Worsened (> 150% of Baseline)
- Worsened (> 100% - <= 150% of Baseline)
- Improved/No Change (> 75% - <= 100% of Baseline)
- Improved (> 50% - <= 75% of Baseline)
- Achieved (> 25% - <= 50% of Baseline)
- Achieved (<= 25% of Baseline)

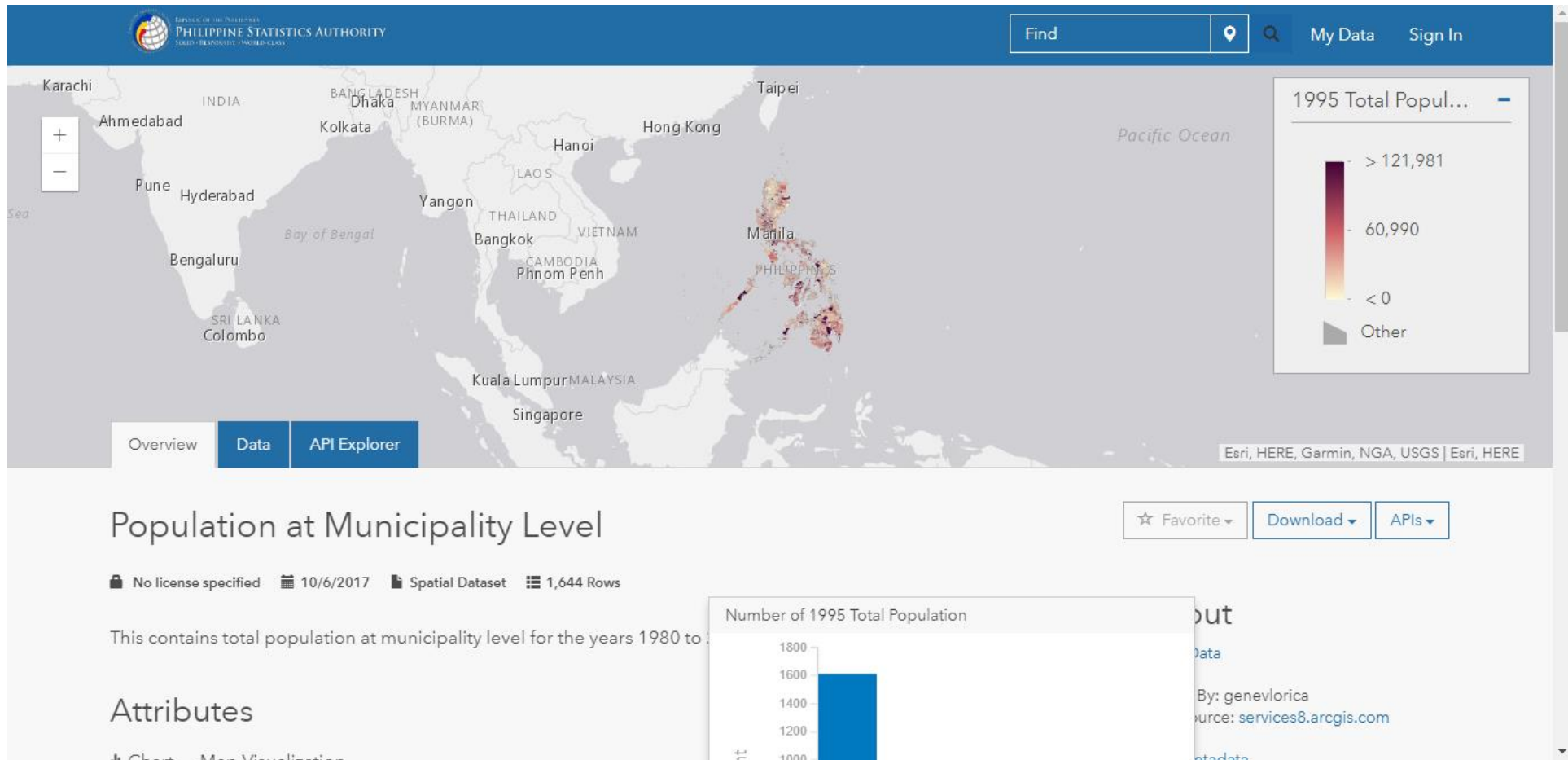


POWERED BY  
esri

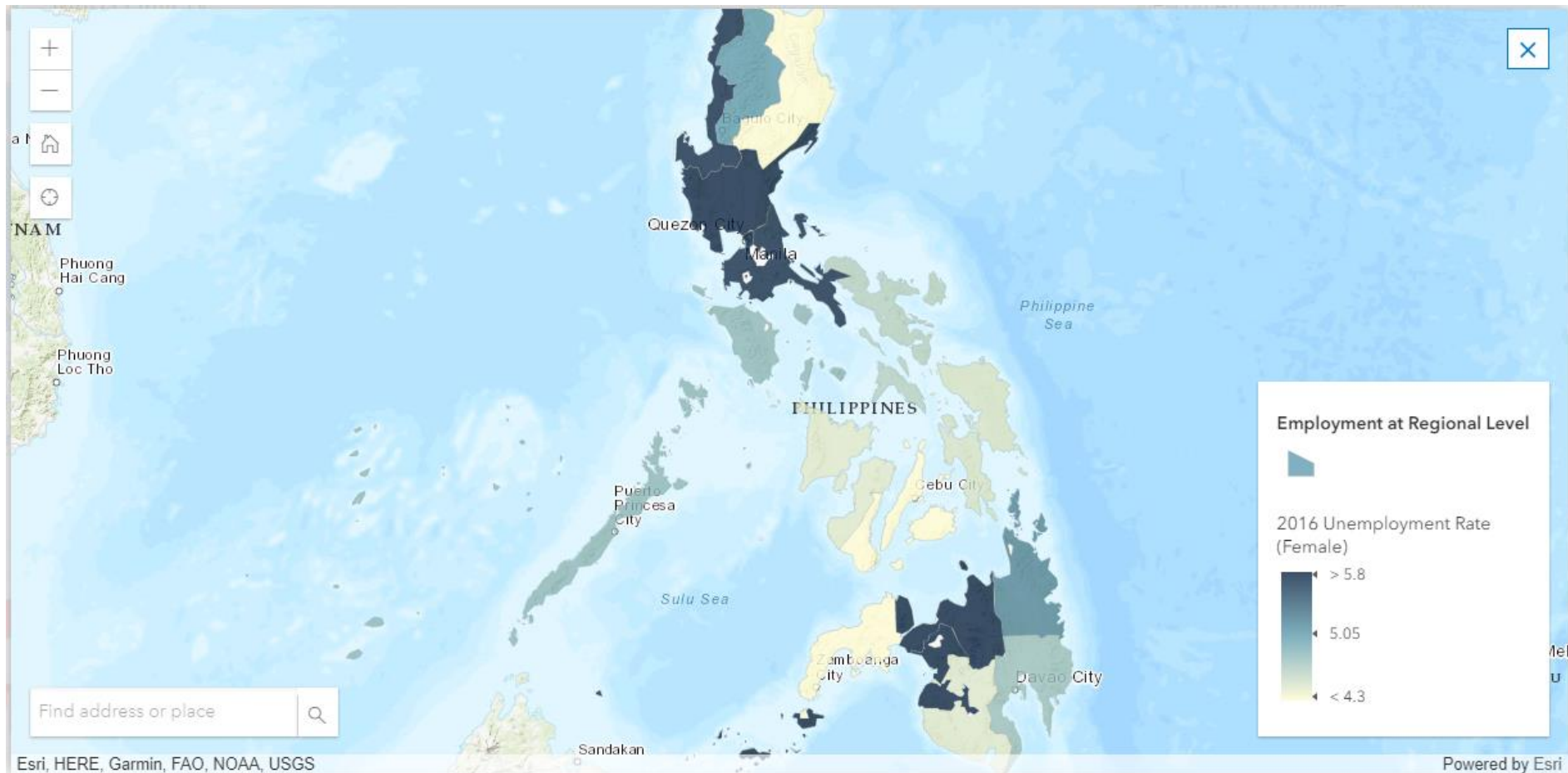
Esri, HERE, Garmin, FAO, NOAA, USGS



# Data Hub



# Data Hub





**Thank You!**



<http://www.psa.gov.ph>



/PhilStatAuthority



@PSAgovph

