

LAND MANAGEMENT - FIJI

Ministry of Lands & Mineral Resources

Fiji

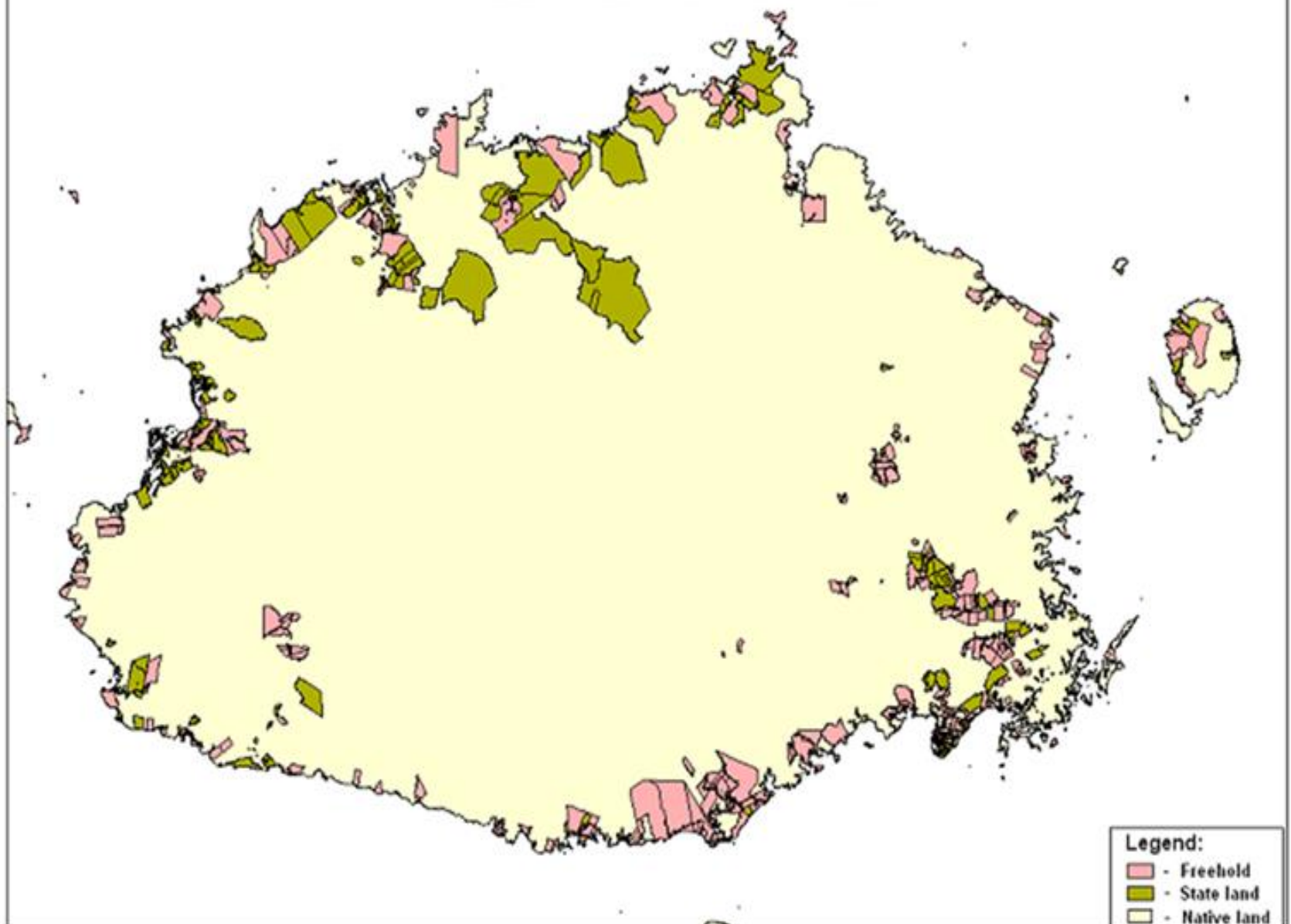
Fiji Islands



FIJI ISLANDS

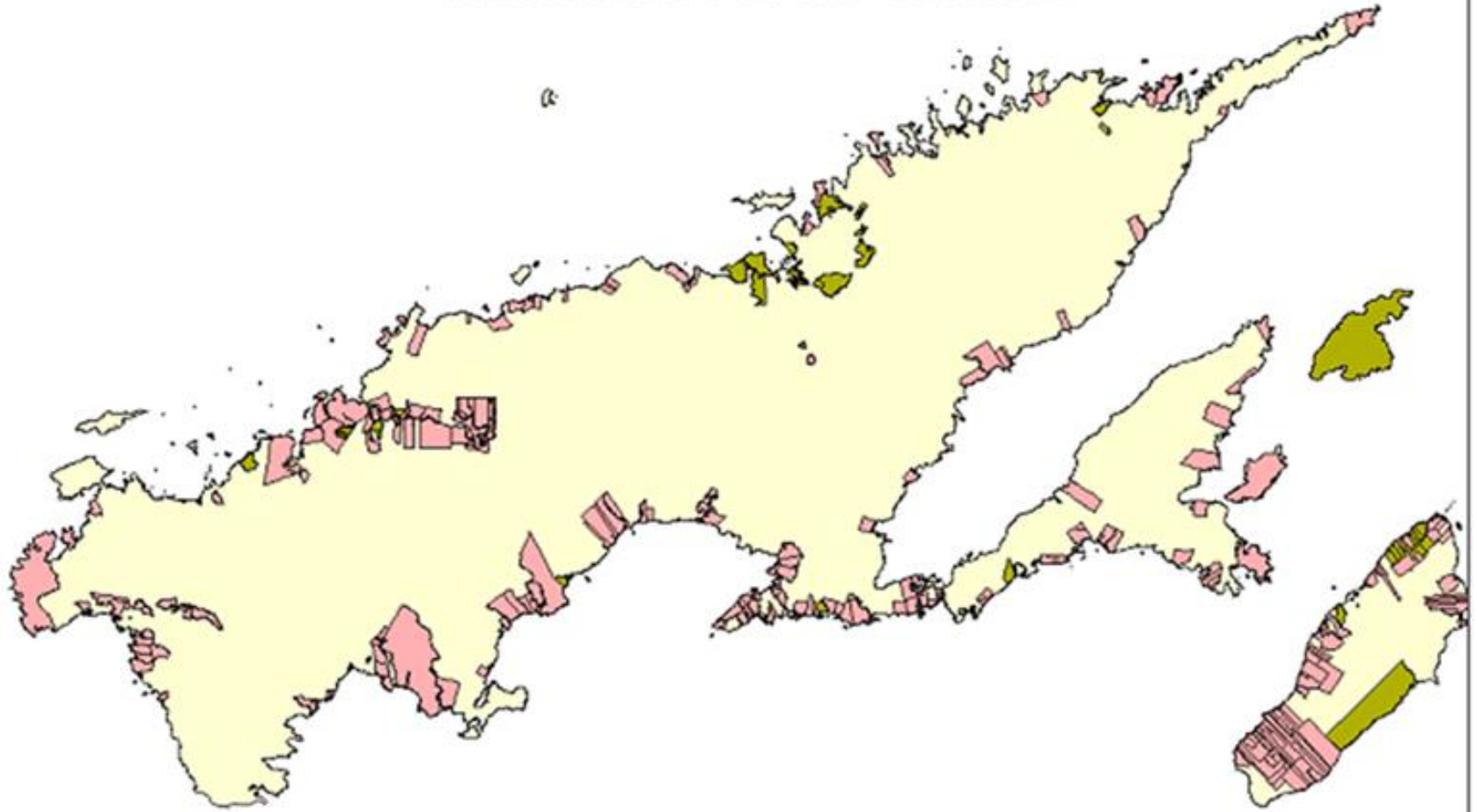
- Lat 18°00'S Long 178°30'E
- 330+ islands, 110 inhabited
- Pop. 870,000
- Total Land Area 18,300 sq km
 - iTaukei land (Native) – 88%
 - State Land – 4%
 - Freehold Land – 8%

VITI LEVU LAND TENURE



- Legend:**
- Freehold
 - State land
 - Native land

VANUA LEVU LAND TENURE



- Legend:**
- Freehold
 - State land
 - Native land

iTAUKEI (Native) LAND

- ✓ 88% - only 16% suitable for agriculture
- ✓ 10% surveyed – 41,000 leases
- ✓ Acts & Regulations
 - Native Lands Act
- ✓ Owned by iTaukei Indigenous Fijians – *Tokatoka, Mataqali, Yavusa*
- ✓ Administered by iTaukei Land Trust Board on behalf of landowners
- ✓ Cannot be sold (only to Govt. on special circumstances) – leased

STATE LAND

- ✓ 4% plus foreshore & beds of rivers & streams
- ✓ 3.5% surveyed – 15,000 leases
- ✓ Acts & Regulations
 - Crown Lands Act
 - Rivers and Streams Act
 - Land transfer Act
- ✓ Owned by the State
- ✓ Administered by the Department of Lands and Surveys
- ✓ Cannot be sold (only on special circumstances) – leased.
- ✓ Regularise the informal settlements over state land with 99 year residential lease.

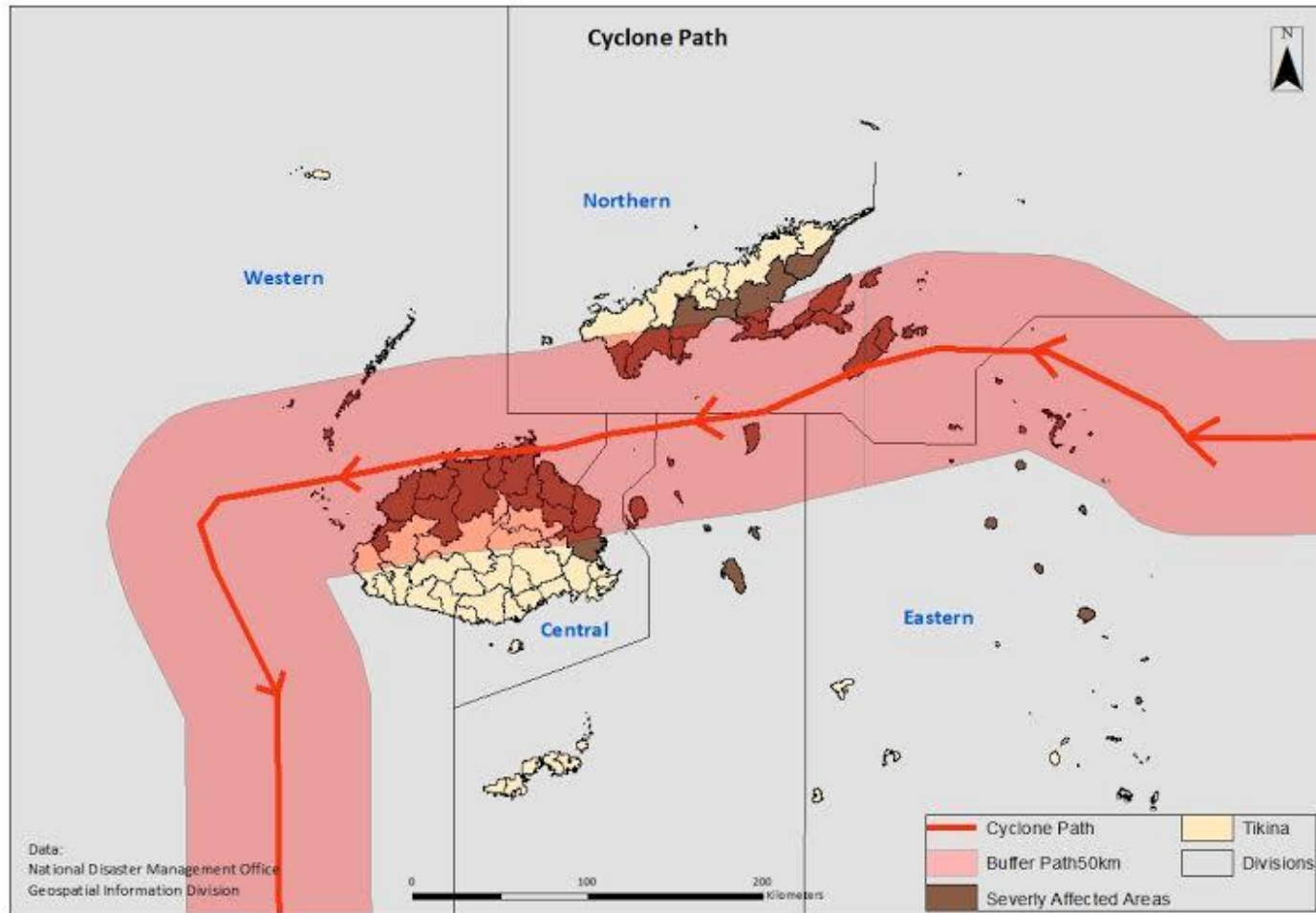
FREEHOLD LAND

- ✓ 8% - very best
- ✓ Crown Grants & Native Grants
- ✓ Acts & Regulations
- ✓ Owned by individuals/group/etc.
- ✓ Can be sold (willing seller and willing buyer), leased.

CHALLENGES

- Different land tenure administered by different organisation
- Centralization of land records
- Out dated and unclear processes
- Lack of regular monitoring
- Out dated legislation & regulations
- Budget limitations
- Capacity building

TC Cyclone Disaster



New Land Challenges

- **RELOCATION** – people don't want to live on the coast anymore
 - Land Availability Post Disaster
 - Land Acquisition
 - Land Compensation Issues
 - Re-building
 - Stronger
 - Better Planned villages

Way Forward

- Improve coordination of all land administration
- Centralised portal to host 3 tenure land administration records (National Land Register)
- Review of the existing land administration legislation and regulations
- Review the current systems and processes
- A system for the sustainable use of land

THANKS

VINAKA