



# SDI 3.0

## Delivering Place - Transforming Government

**UN – GGIM  
Exchange Forum**

Doha, Qatar  
February 2013

Mark Sorensen, CEO  
The GPC Group





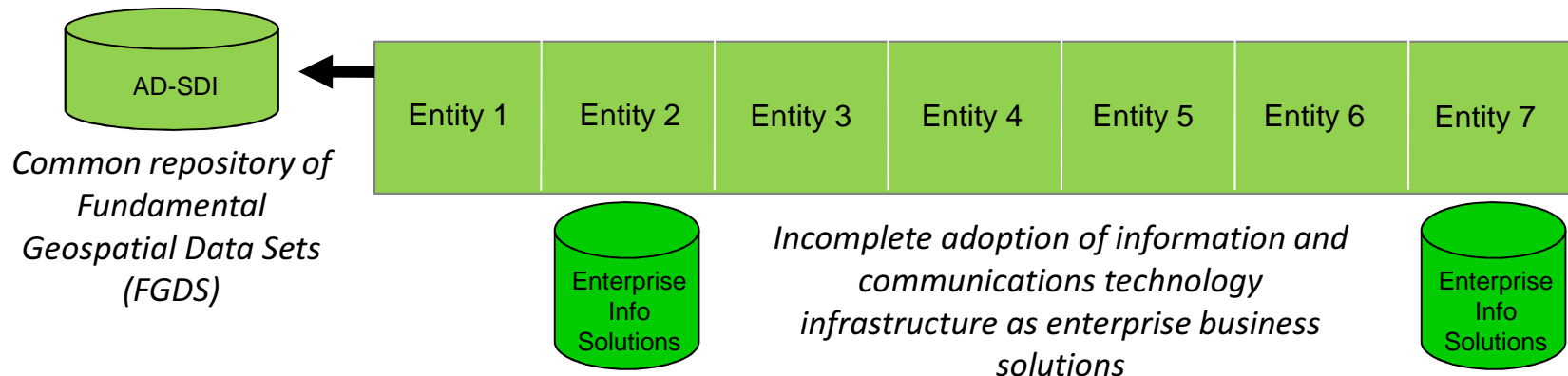
# Proposition

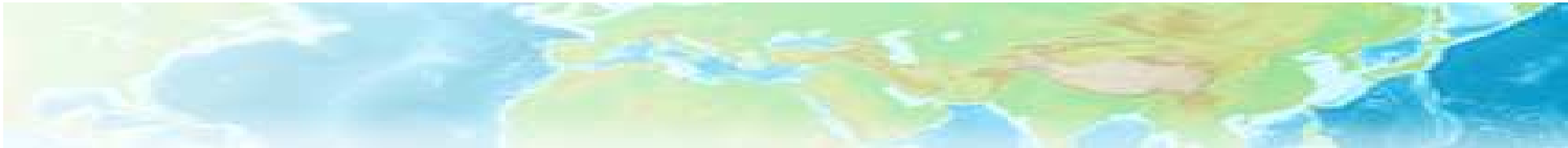
- “Delivering (geospatial) Place” depends on **for Whom? What? When? Where? Why? and How?**
- SDI evolving - technologies massively converging
- Mobile telephony vanguard of global information technology adoption
- Opportunity to leverage SDI and other Community Information Infrastructure to transform government and evolve new approaches to deliver Place to new audiences in new ways



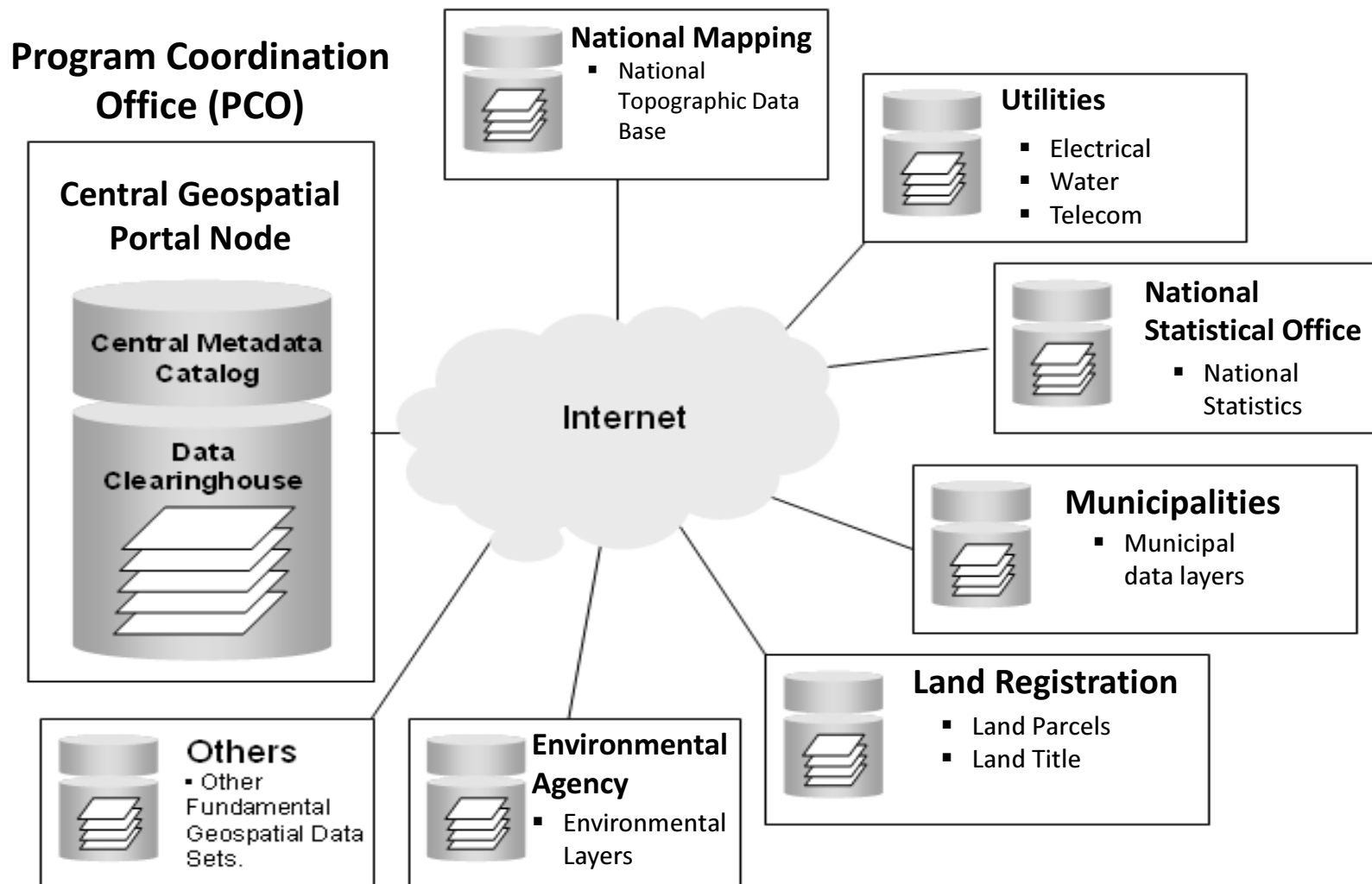
## SDI 1.0

SDI as a concept recognized GIS data as a fundamental infrastructure that supports national physical, cultural and economic development and environmental protection, akin to highways, telecommunications networks, health and educational facilities.





## Network of Interoperable Nodes



# SDI Growth Paced with Technology Adoption Stages

Important to understand the progression of technology adoption....

## Level 1 – Awareness, Understanding and Commitment

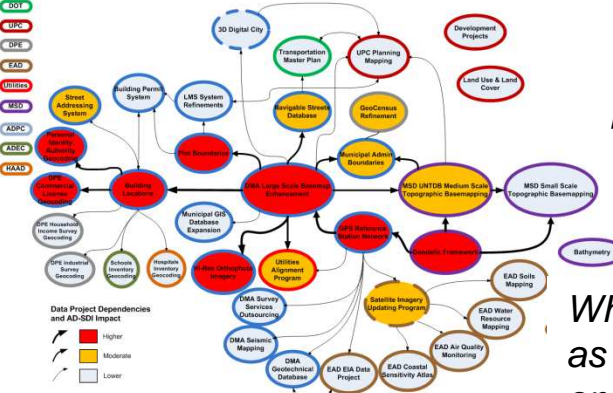
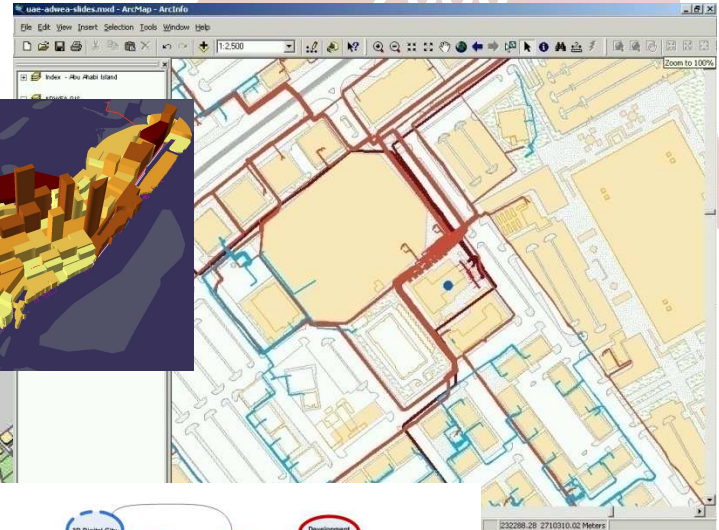
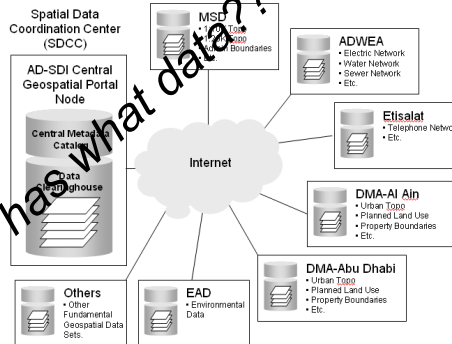
Wow!! Collectively we have a lot of existing information and expertise!!

2030

This is something we MUST do.....

What is GIS?

Who has what data??



What ongoing projects are we doing??

What do we need as a community and how do we work together?

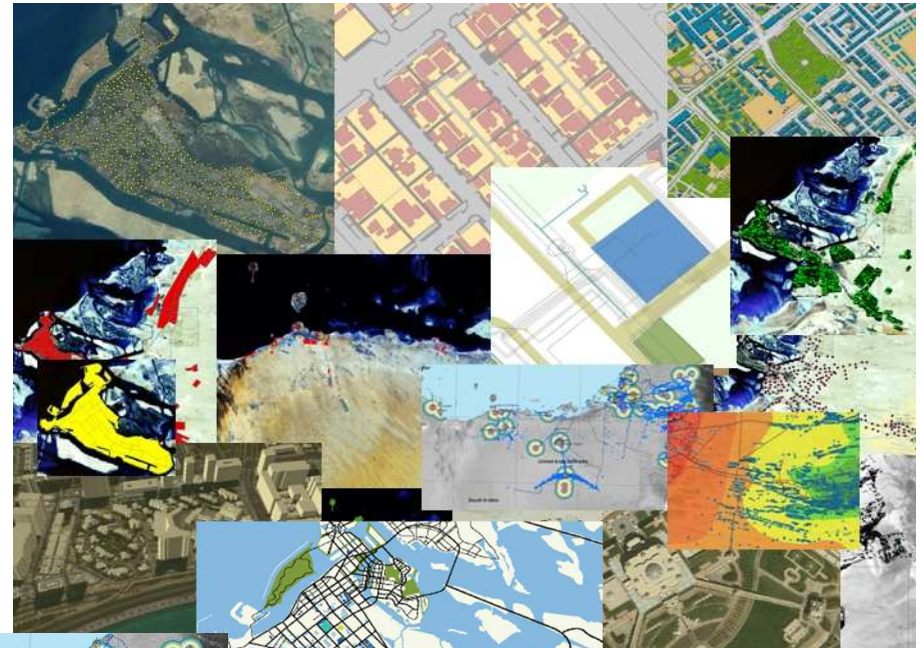


# AD-SDI Growth Paced with Technology Adoption Stages

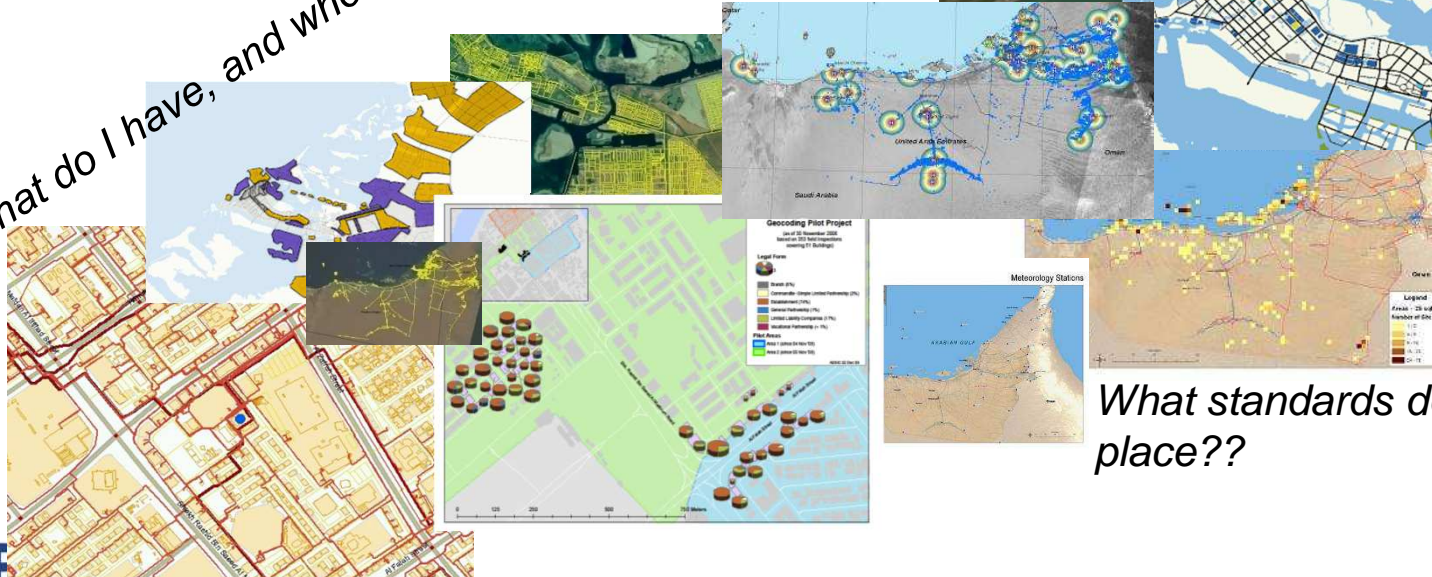
*Now I can see what others are doing and planning!!*

Important to understand the progression of technology adoption....

## Level 2 – Basic Capacity and Inventory



*What do I have, and where??*



*Who has information related to me and my needs??*

*What standards do we need in place??*



## Instant SDI

*New and Improved!!...  
...Just add water!!*

Effective and progressive Enterprise GIS, GIS Federations, and SDI's are not events or projects, or rubber-stamp models.....

...but rather institutional "movements" that must be carefully guided through stages of development that fit each unique situation



**A Movement (versus a Program) implies fundamental organizational transformation as a core eventual outcome**

Project

Program

Movement

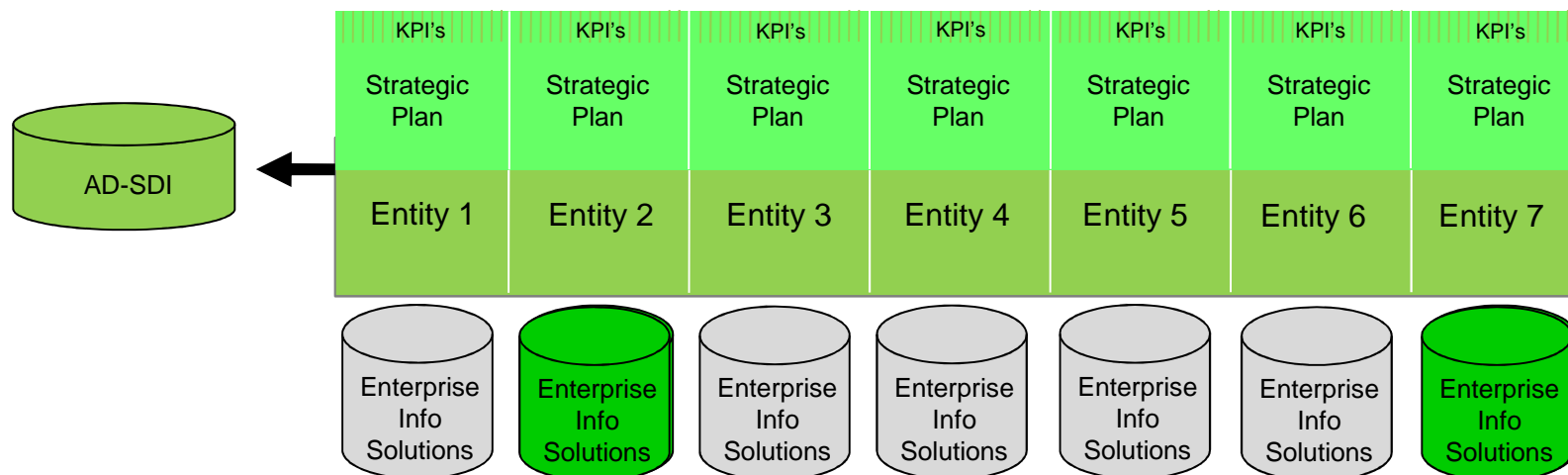
Transformation



# What is Spatial Data Infrastructure (SDI)?

## 2.0

SDI 2.0 involves the institutionalization of the SDI framework as a permanent function of government, codified in policies, regulations and financial structures, advanced GIS capability pervasive across stakeholder community, and data custodians updating their information through ongoing business transactions, and making this information immediately available to the community. GIS and SDI recognized as key enabling environment for strategic planning and sector-based policy making.





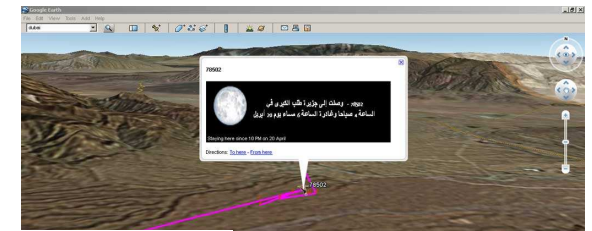
# AD-SDI Growth Paced with Technology Adoption Stages

Understanding builds capacity, builds more understanding.....

## Level 3 – Enterprise GIS Development, Business Streamlining, and Expansion

*We can do some interesting and attention-grabbing applications!*

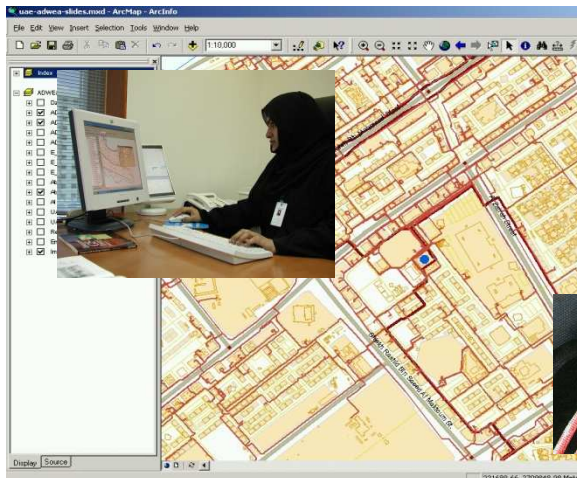
*I need to lay out and monitor my service areas.....*



Service Area 1



*This is helping to do my job quicker and better.....*



*It is getting easier to coordinate with others.....*

# AD-SDI Growth Paced with Technology Adoption Stages

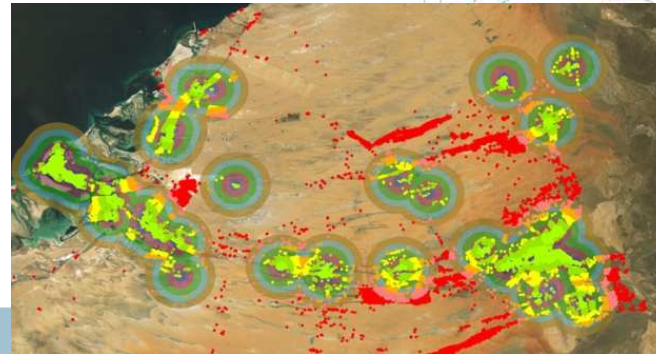
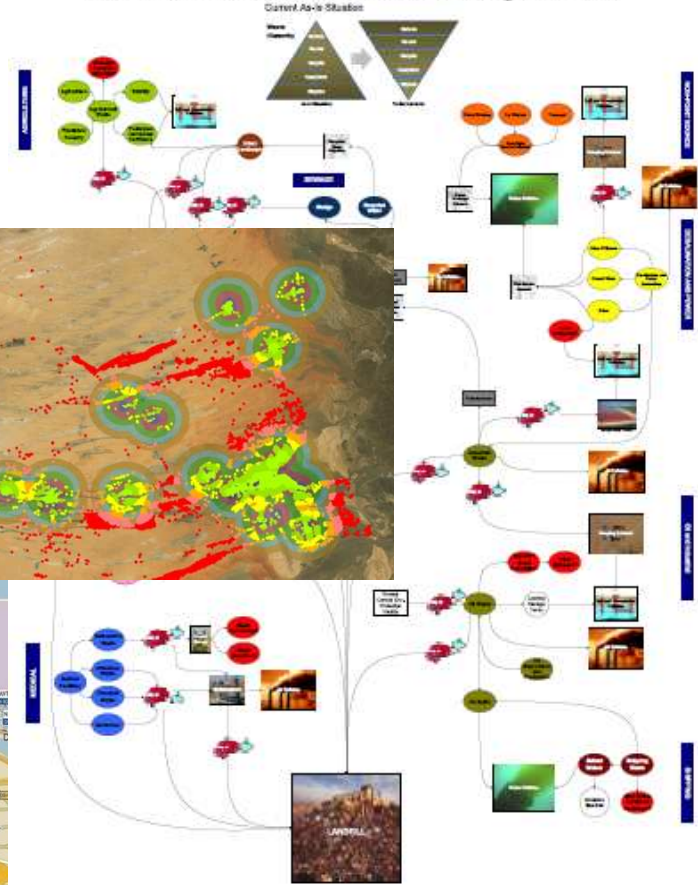
*Now I can link my procedures with those of others!!*

Important to understand the progression of technology adoption....

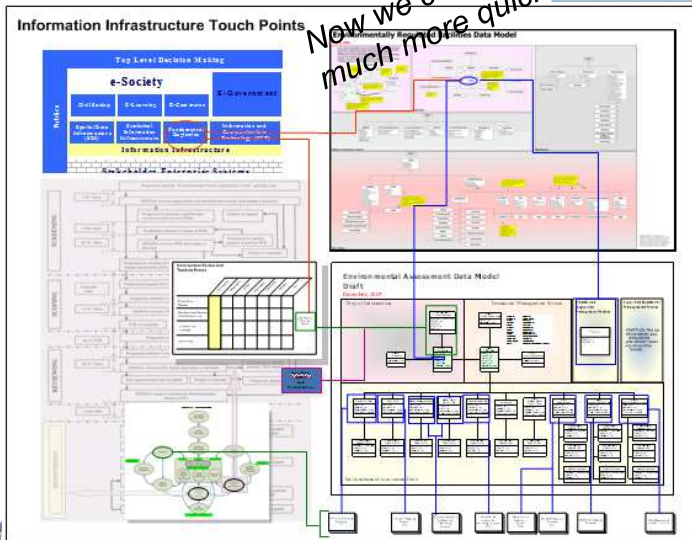
## Level 4 – Inter-Sector Business Integration and Expansion

*I can see by my analysis that our issues need to be coordinated.....*

Draft – Abu Dhabi Waste Stream Process Diagram – Draft



*Now we can process our NOC's much more quickly....*



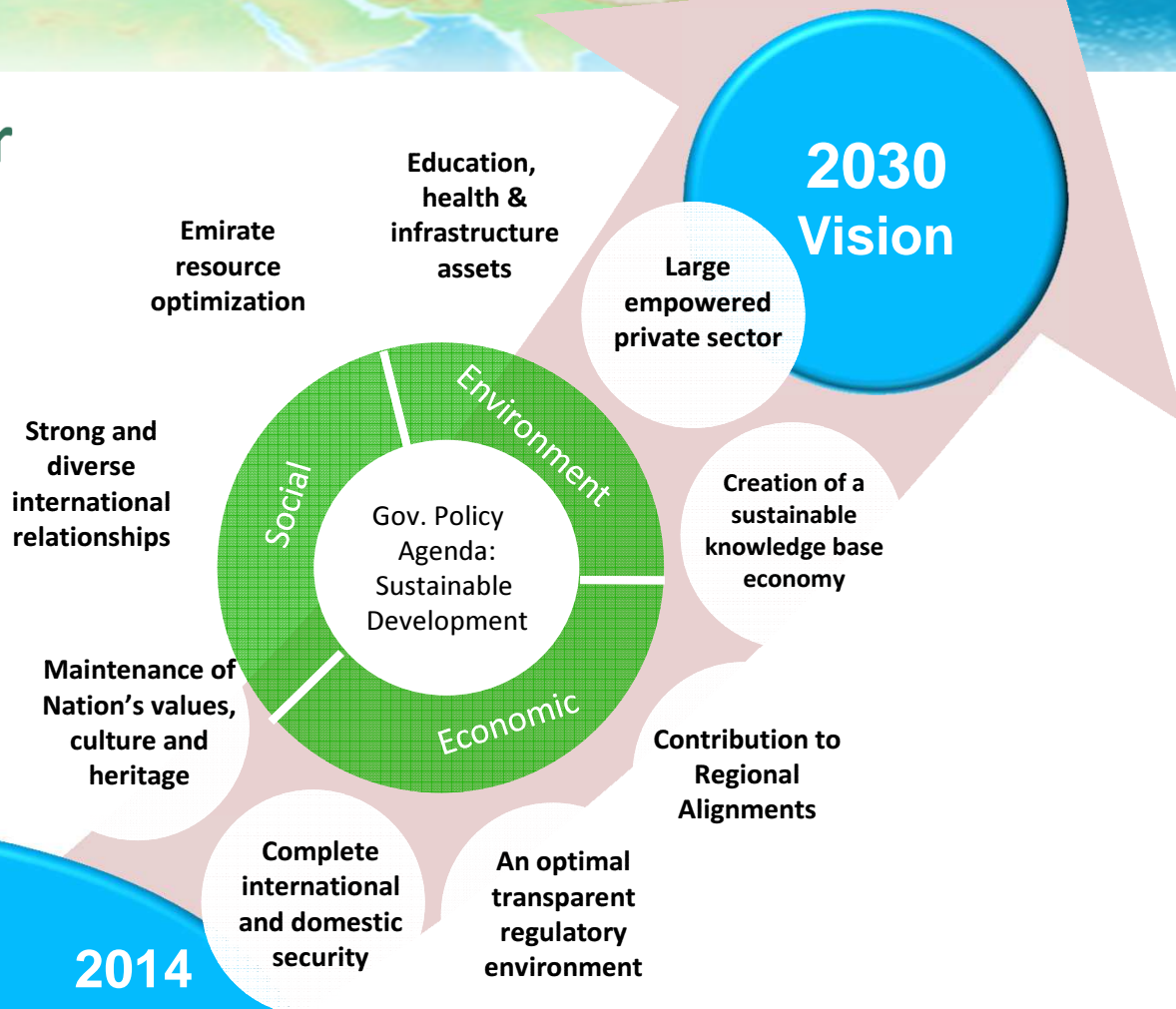
*Development review and approval coordinated across more than 30 agencies.....*

*What government business processes need linking??*



# Long-Term Vision for Nation Set by Government Policy Agenda

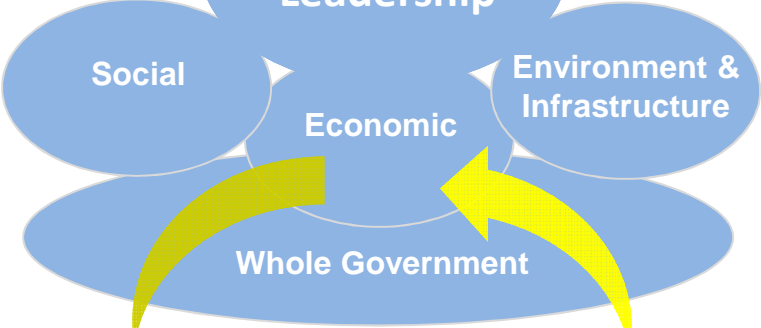
How can GIS and SDI contribute to the achievement of this agenda?





Decision Making

Executive Leadership



Policy  
Strategy  
Regulatory  
Institutional  
Finance

Advisory

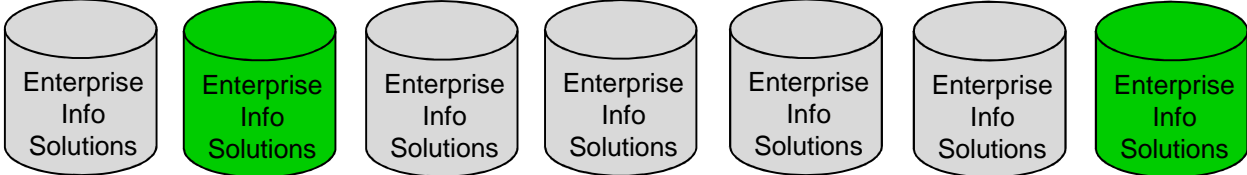
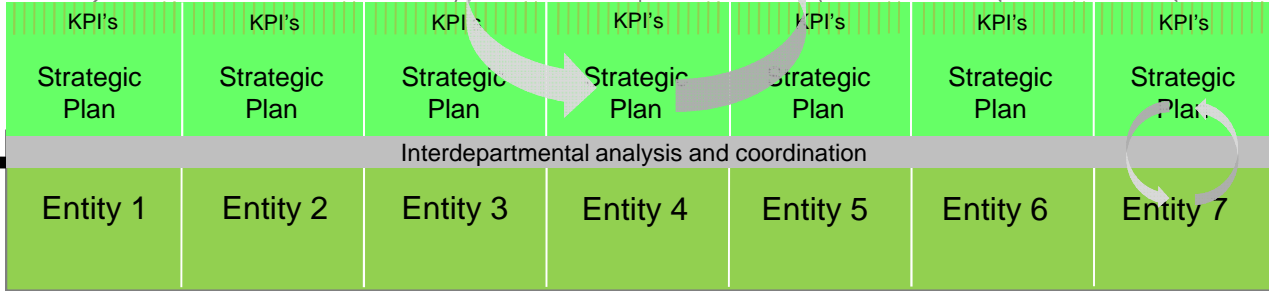
Strategy and Policy Unit

Analysis

Interdisciplinary Technical Analysis , Planning, Coordination and Performance Management

??

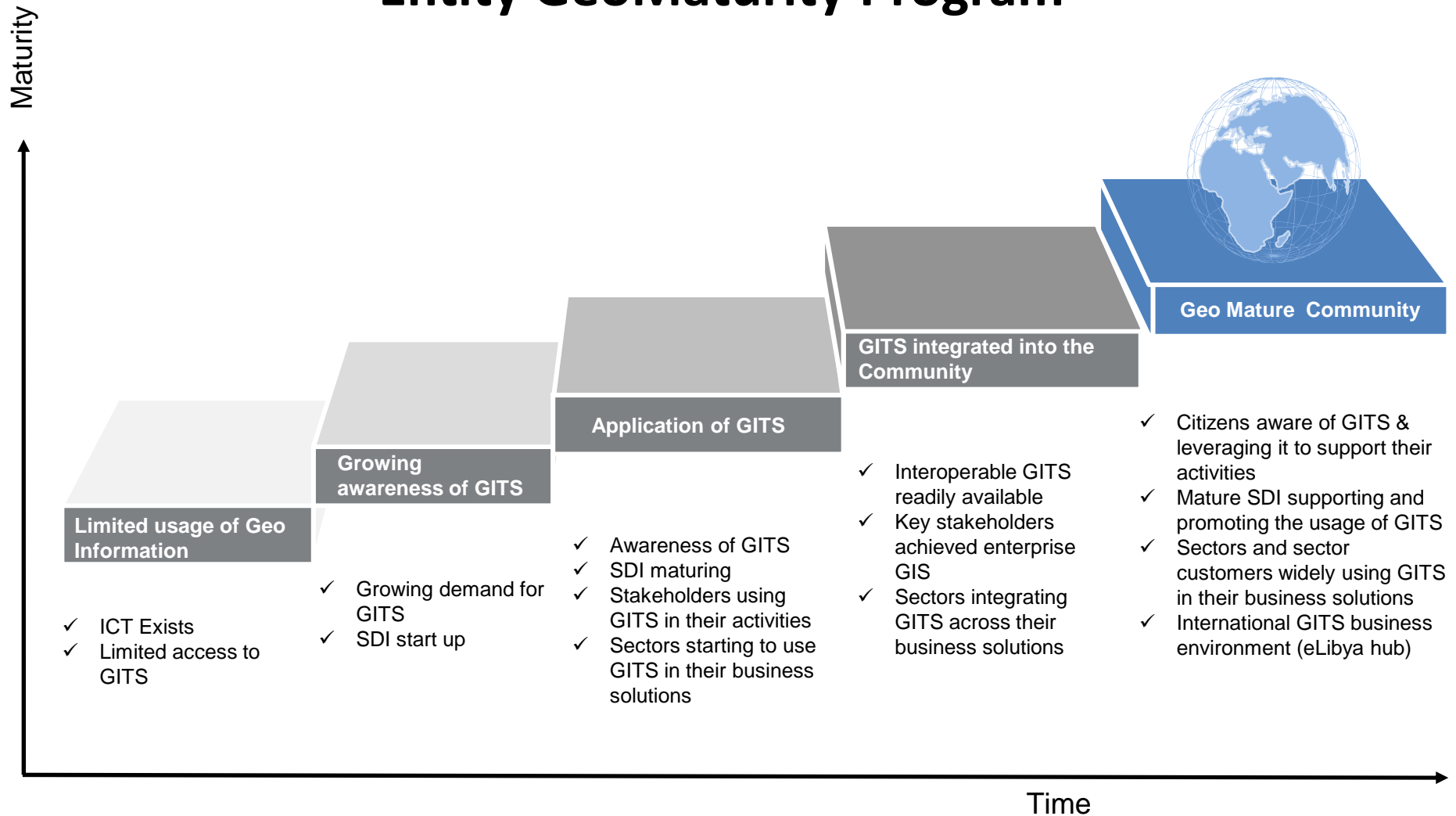
Operations

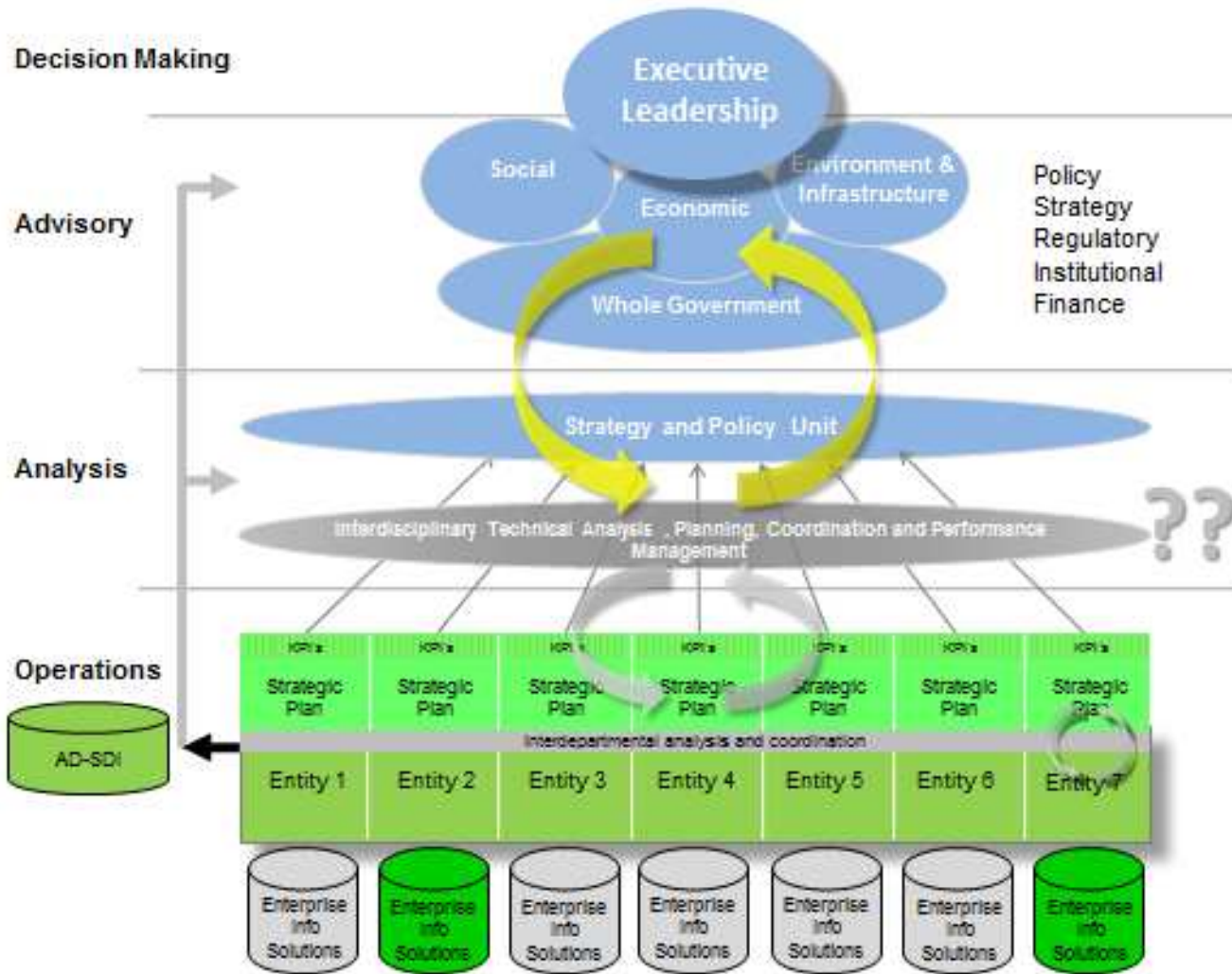






# Entity GeoMaturity Program





The process of analyzing government business, conducting gap analysis and preparing well considered program design can be shaped to provide technology assisted structural improvements





### Telecommunications

### Utility Management

#### Electrical

### Utility Management

#### Water & Sewer

### Topographic Basemapping

### Land Records

### Disaster Management

### Urban and Regional Planning

### Facility Management





## Economic Development

Vacant Buildings  
Potential Gross Taxable Sales

Proper  
Invento

of Ontario, California

## Agriculture

## Health Care

Total P.H.C. Visits

Utilization Rate

General P.H.C. Visits

Drug Prescriptions

Laboratory Referrals

## Census

## Post

## Petroleum

## Education

Students per Housing Unit by Tenure

Africa Food Balance

UNEP

Teica

ERDAS

3M

USAID

USDA

columbia earth.com

NATIONAL GEOGRAPHIC SOCIETY

U.S.

## Environmental Management

Scientific Research

Observation/Sampling

Resource Inventory

Resource Assessment

Monitoring

Adaptive Management



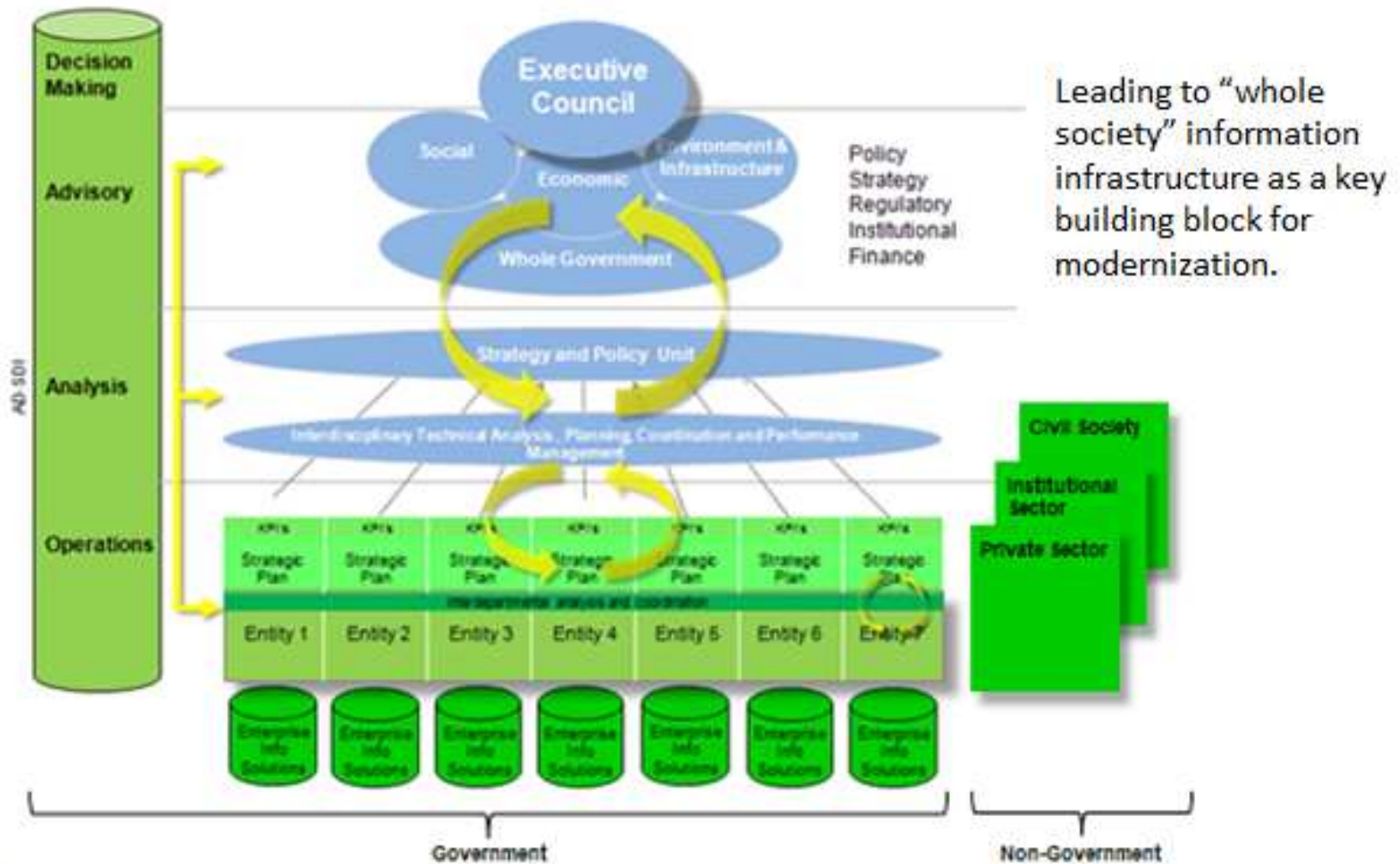


# What is Spatial Data Infrastructure (SDI)?

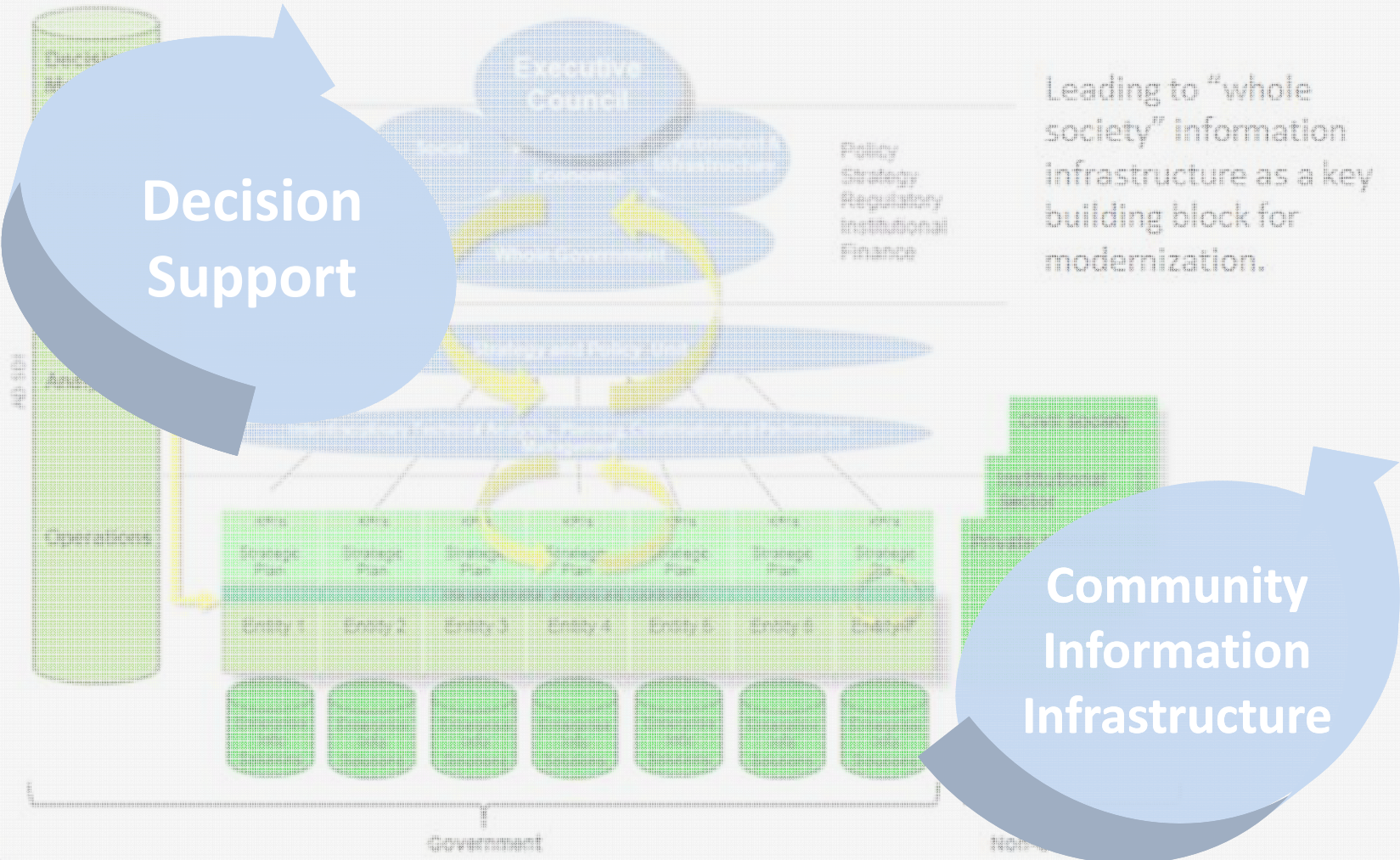
## 3.0

SDI 3.0 continues operational functioning for data clearinghouse management. Accurate, up to date, reliable data provides enabling environment for informed decision making. Also builds on interdisciplinary foundations towards more collaborative and systemic planning, policy making and coordinated interventions. Location-enabled social networking, global connectivity and free flow of information, opinions and ideas provides a fertile opportunity to recraft and retool government engagement with constituencies.

# SDI Can Be Integrated with Government Transformation Planning



# Two Emerging Frontiers



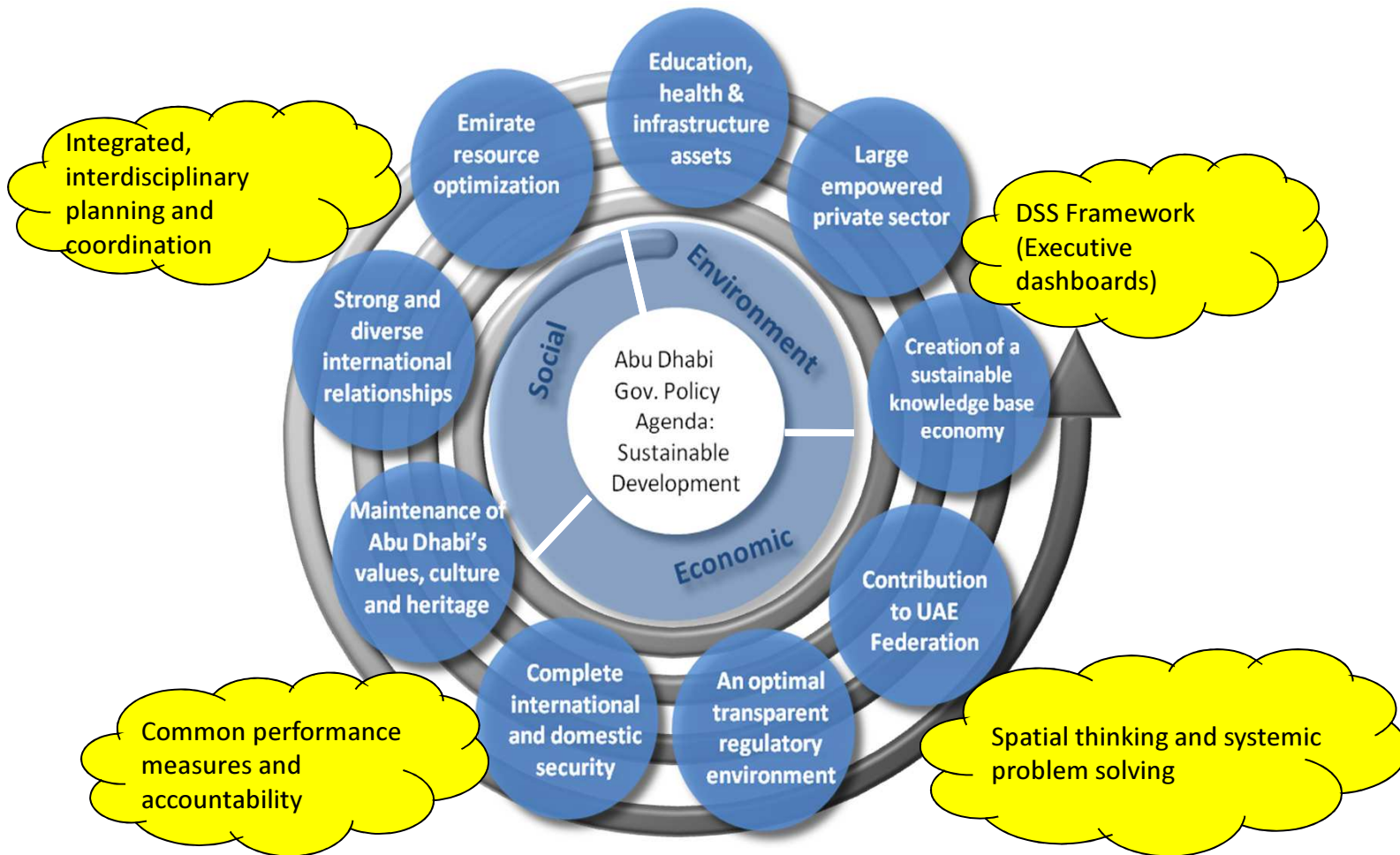
Leading to "whole society" information infrastructure as a key building block for modernization.

Decision Support

Community Information Infrastructure

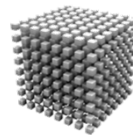
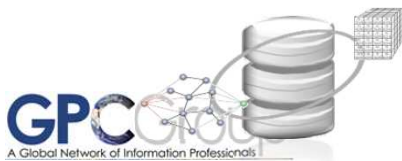
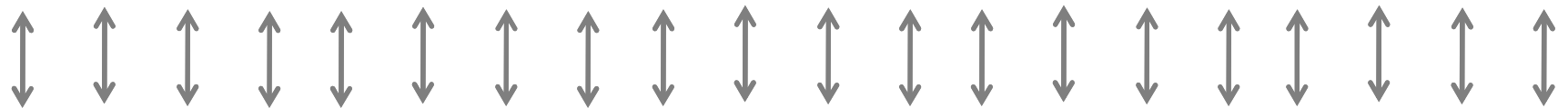
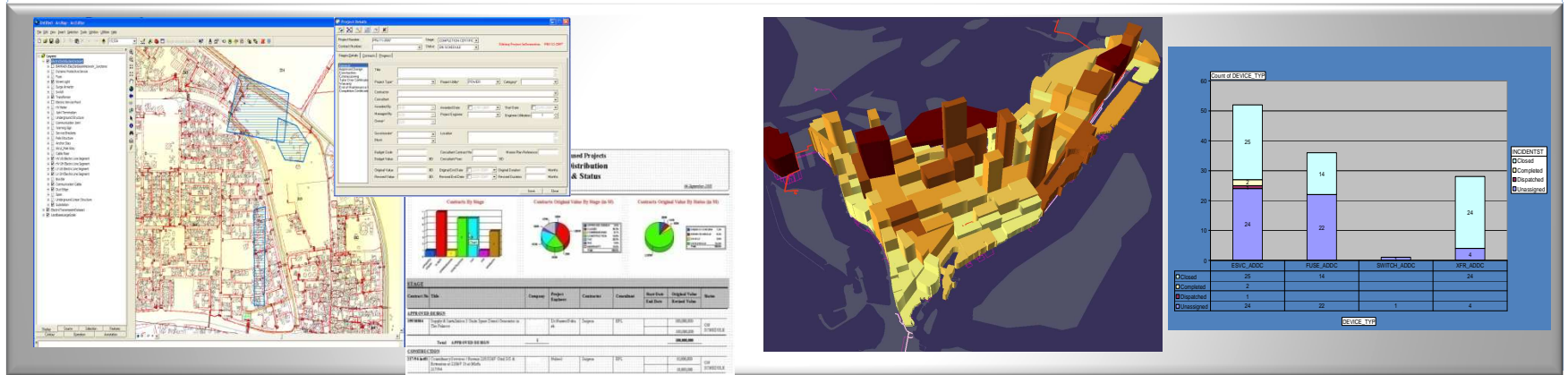


# DSS will empower GeoIntelligence and GeoDesign...





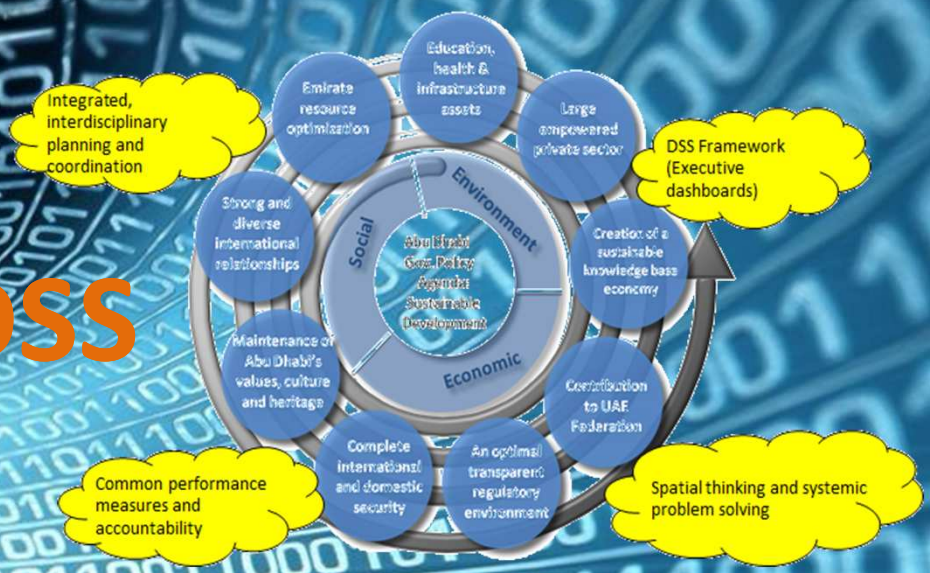
# Executive Dashboard Framework







**DSS**



???

**Social Media**

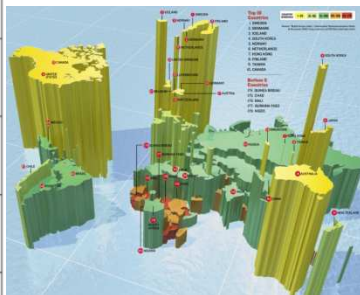
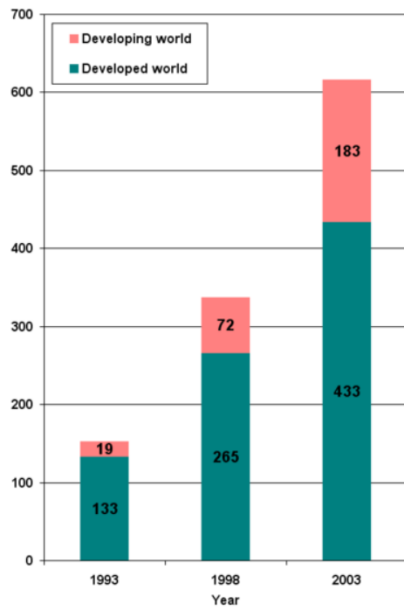
**Big Data**







Personal computers (million), source: ITU



- Cell phone adoption faster than any other technology adoption in history;
- Mobile telephony and basic computing in wide usage in the developing world and growing rapidly;
- Basic technology only requires basic literacy, but encourages increased literacy and technology familiarity through usage for practical purposes.







# Many Challenges

- Basic infrastructure often lacking
- Semi-literate members of community
- Financial instability
- Lack of local capacity to operate and maintain
- Lack of government ability to invest
- Lack of critical mass to attract private sector investors
- .....etc.



# GeoVillage

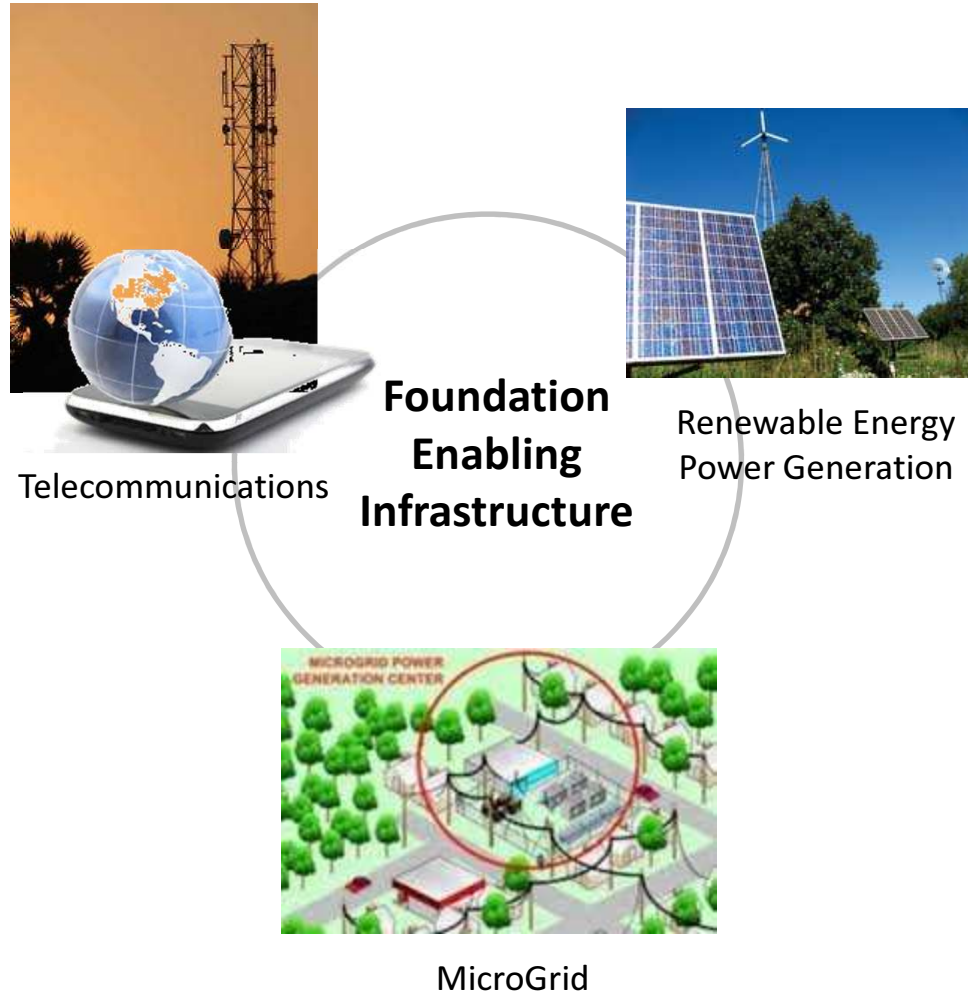
Community Information Infrastructure

Putting Information and Communications  
Technologies to Work for Local Community  
Development



# GeoVillage

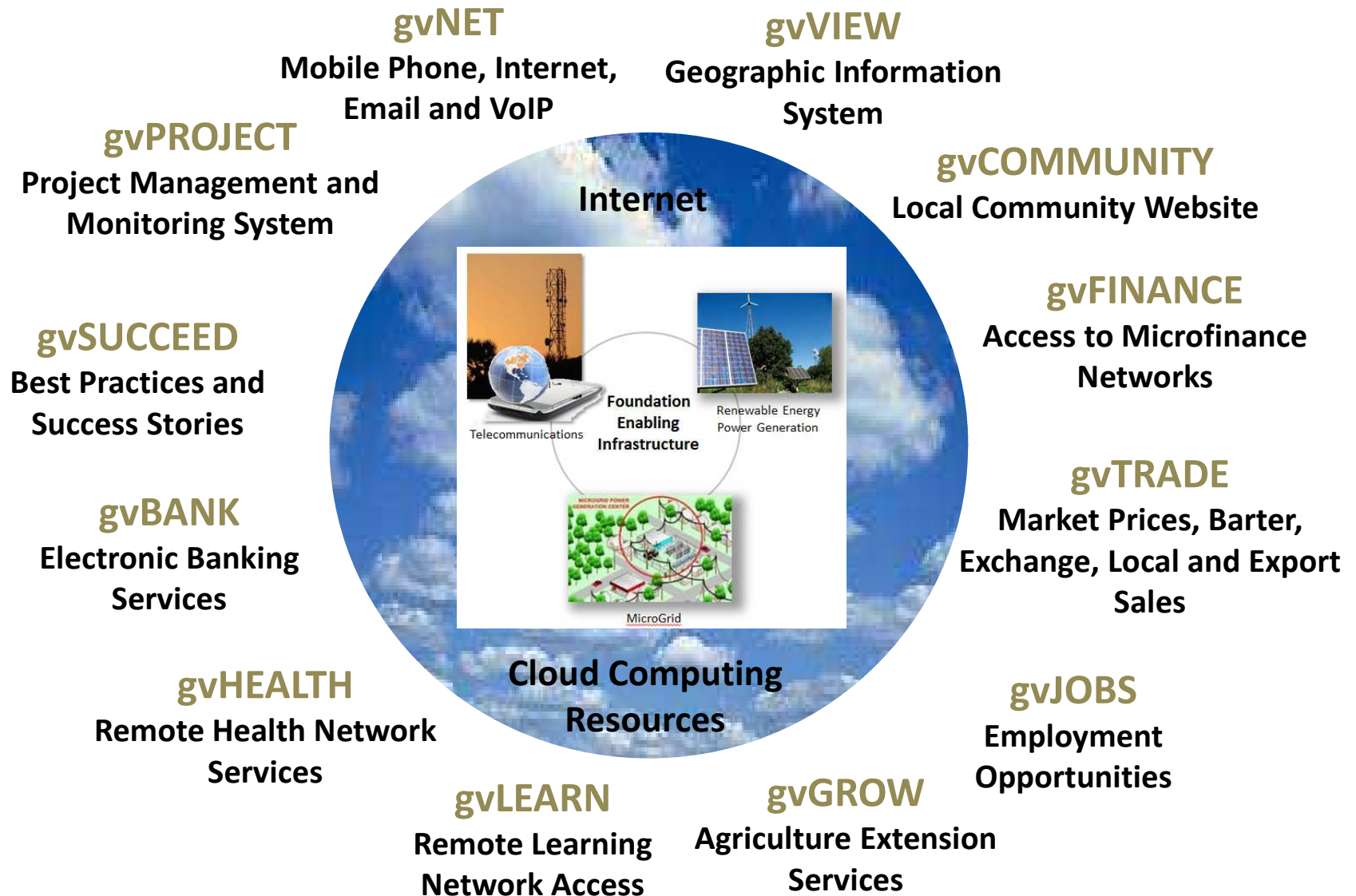
Community Information Infrastructure





# GeoVillage

Community Information Infrastructure





**Onward!!....**



[www.thegpcgroup.com](http://www.thegpcgroup.com)