

ACTION PLAN IDE HONDURAS

Presented by Ms. José Reyes Chirinos
Director Land Use Plannnig. / SPE



1

**HONDURAS ACTION
PLAN**

2

**NATIONAL POLICY
SPATIAL DATA**

3

**SOME FUNDAMENTAL
DATA**

ACTION PLAN SPATIAL DATA INFRASTRUCTURE

- ❖ Since March 2022 we have been working with SDG Data Alliance Project (John Kedar), in the process of elaborating Honduras Action Plan for Spatial Data Infrastructure. The Plan has three components
 - ✓ Planning and preparing
 - ✓ Assessing and analyzing
 - ✓ Designing and developing
- ❖ We are assembling our Infraestructura Spatial Data with Action Plan
- ❖ Actually we have worked Component One Planning and preparing and part of Component Two – Assessing and analyzing

ACTION PLAN FRAMEWORK DOCUMENT

1. Organizing our National Infrastructure Spatial Data (SINIT)
2. National Spatial Data Policy
3. Strengthening of Information Systems (SINIT) (National System of Territorial Information) with Integrated Framework of Geospatial Information.
 - *Institutional and Governance Framework of INDES;*
 - *Legal and Policy Framework*
 - *Financing*
 - *Data*
 - *Innovation*
 - *standards*
 - *alliances*
 - *Skills and Education*

Organizing our National Infrastructure Spatial Data

1. Work group organization
2. Preparation of work Schedule
3. Stakeholder identification
4. Self diagnosis with stakeholders
5. Shared Commitment
6. Honduras National spatial data meeting



Organizing our National spatial data meeting



September 2022

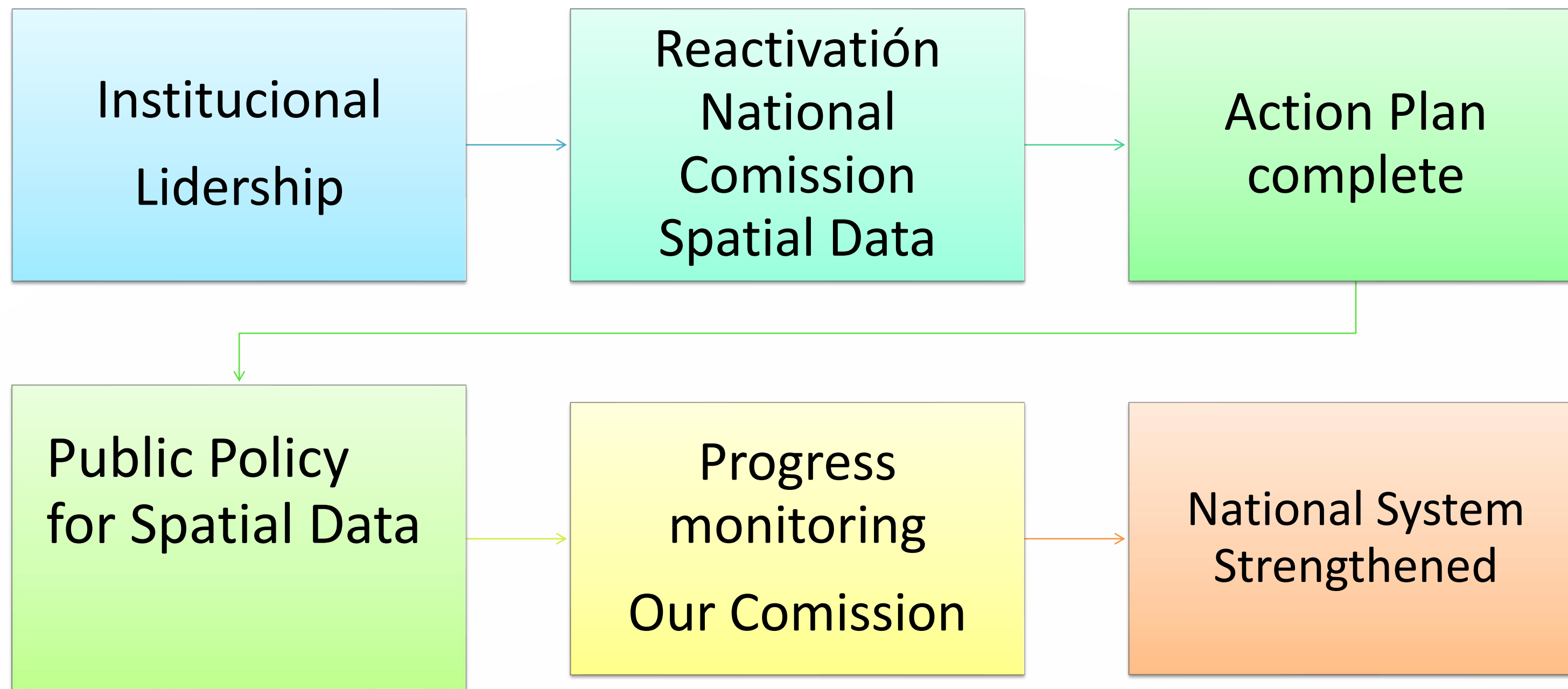
Proposal for Strengthening Our National Territorial Information

- Updating Geospatial Data and application of Standards
- Systems Diagnosis.
- Strengthening our National Infrastructure for Territorial Information SINIT as an Interoperable System.
- Financial Program to support Institutional Nodes for Spatial Data
- Technical training of our stakeholder
- Our National Commission for Spatial Data function as a governance entity

National Policy for Spatial Data

- Geospatial DATA in Honduras presents weaknesses in the availability of updating a reliable information.
- Honduras needs to improve the process of collection, storage, quality and supply of geographic DATA.
- With the support of CEPAL it being developing the National Spatial Data Policy.

Honduras National Policy for Spatial Data



Action Plan

march
2022

- **Understanding the Action Plan**

septiembre
2022

- **Profile IDE Policy for Spatial Data**
National Meeting for Spatial Data

diciembre
2022

- **Draft Action Plan**
National Meeting Stake Holder

marzo
2023

- **Action Plan**

Fundamental Data of Honduras

The cartography of Honduras is illustrated below with respect to these fundamental data

Honduras Fundamental Data



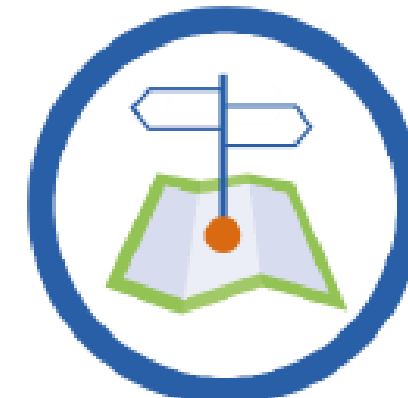
DIRECCIONES



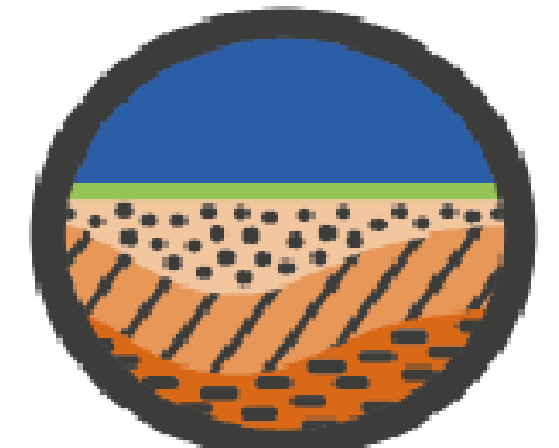
USO Y COBERTURA DEL SUELO



ELEVACIÓN



NOMBRES GEOGRÁFICOS



GEOLOGIA Y SUELOS



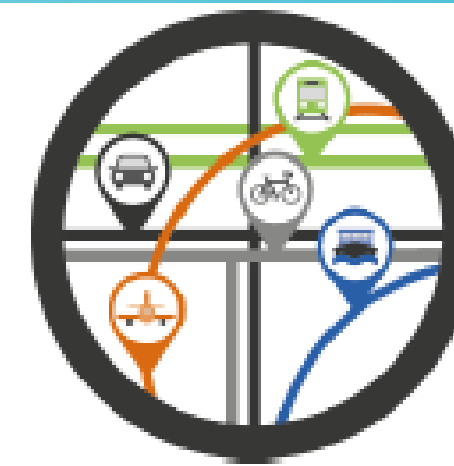
PARCELAS DE TIERRA



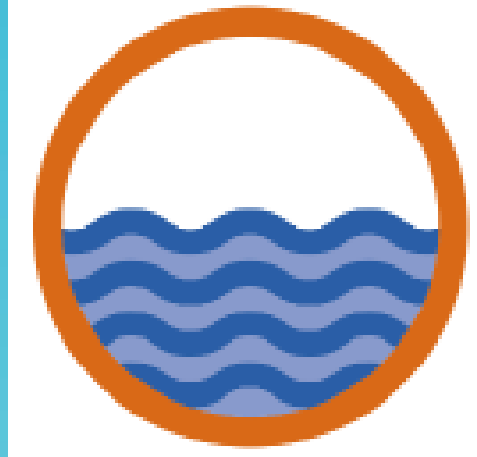
INFRAESTRUCTURA



ASENTAMIENTOS



RED DE TRANSPORTE

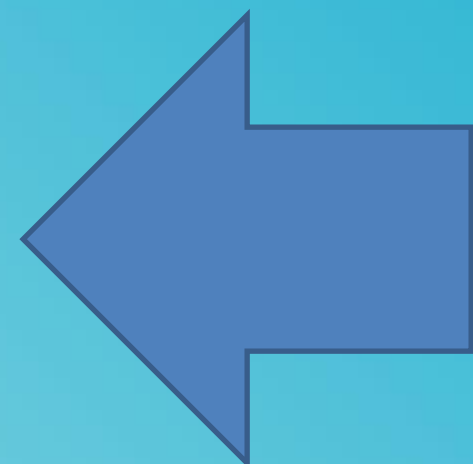
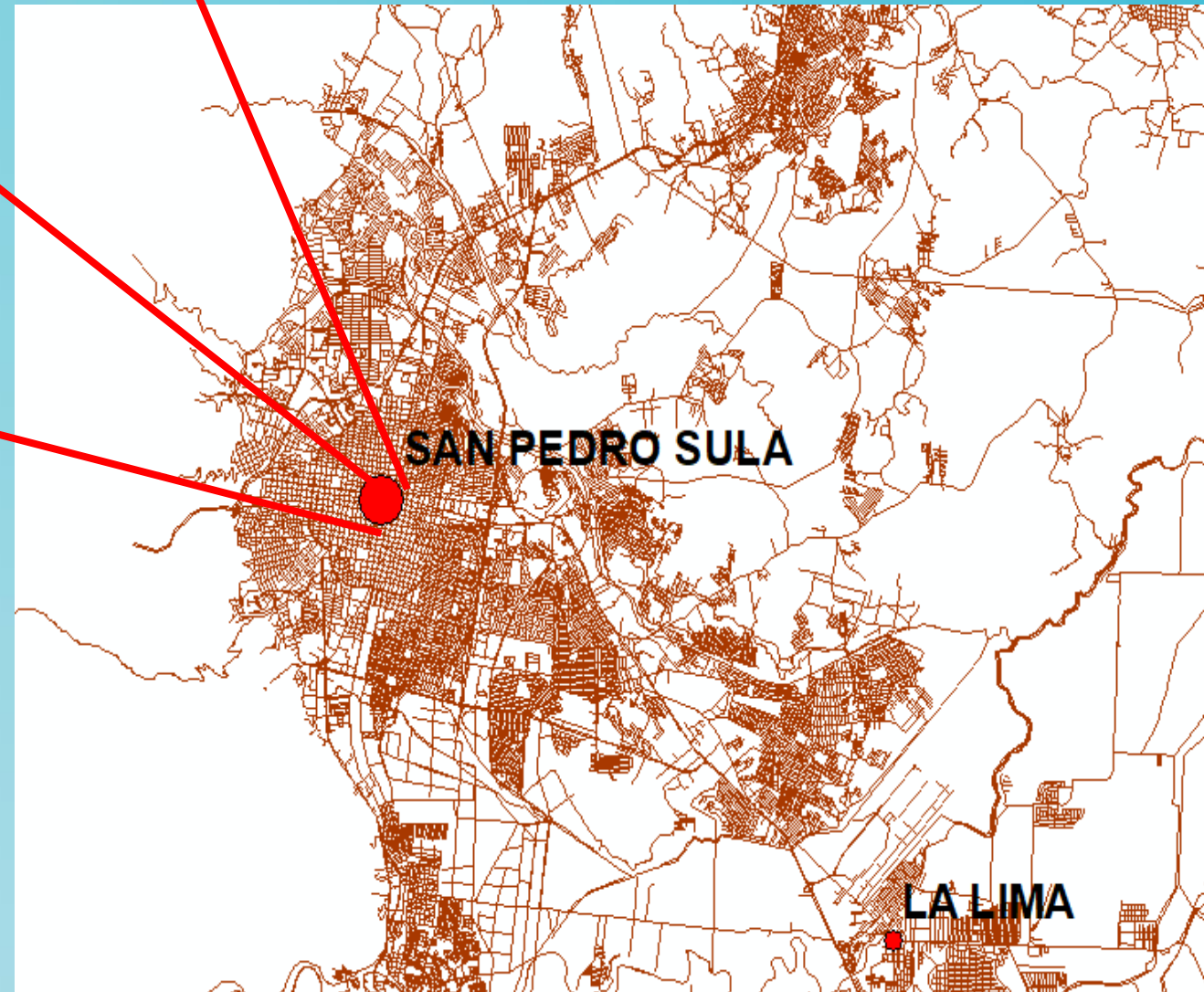


AGUA

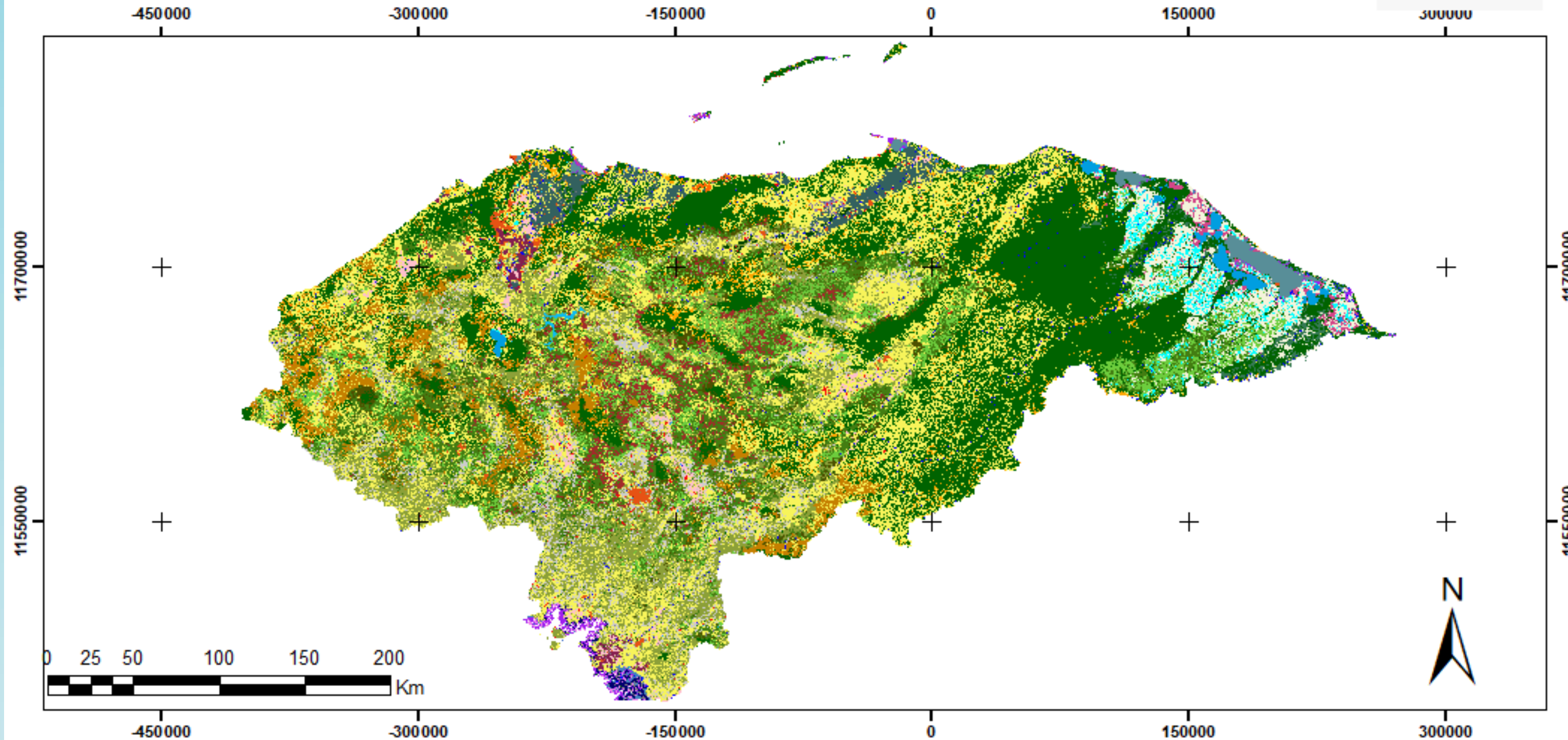
Adresses

From Open Street we produce shape of Honduras Street and roads.

Utily: Adress for houses, viviendas, Shelter after floodung etc



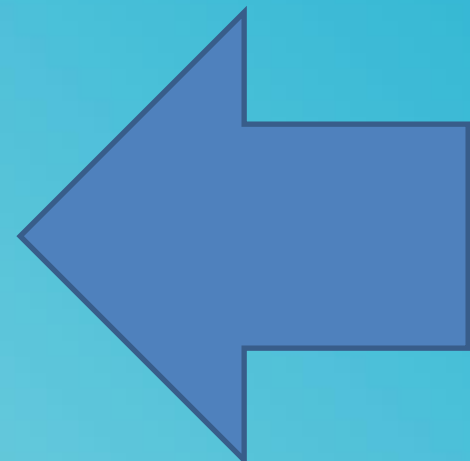
Mapa de Cobertura y Uso de la Tierra de Honduras

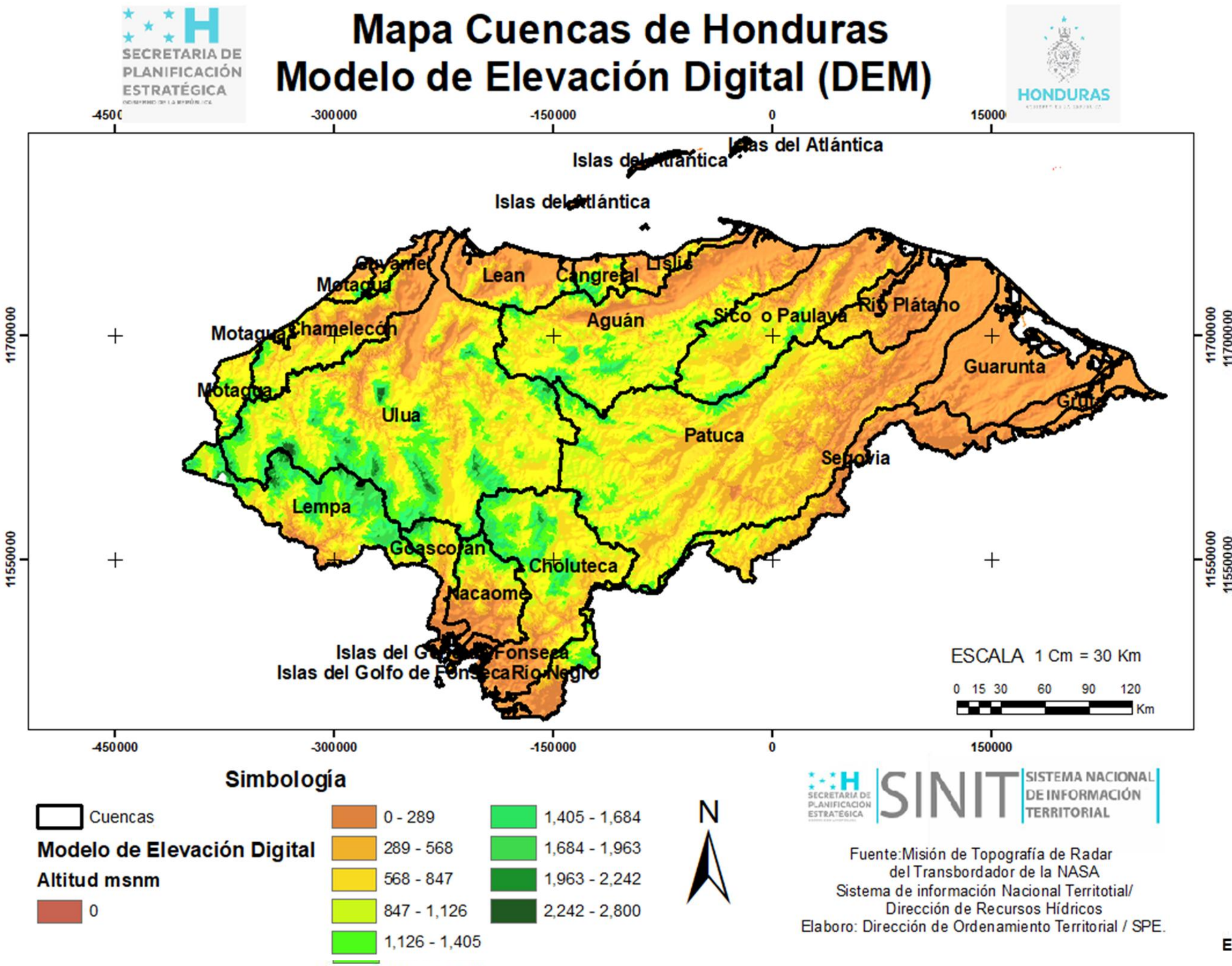


Simbología			
Bosque Latifoliado Húmedo	Pino Plagado	Musáceas	Arenal de Playas
Bosque Latifoliado Deciduo	Arboles Dispersos	Caña de Azúcar	Suelo Desnudo Continental
Bosque Mixto	Cafetales	Piña	Área Húmeda Continental
Bosque Latifoliado Húmedo Inunda	Frutales	Arrozales	Área Húmeda Costero
Bosque de Conifera Densa	Vegetación Secundaria Húmeda	Agricultura Tecnificada	Lagos y Lagunas Naturales de Agua
Bosque de Conifera Ralo	Vegetación Secundaria Decidua	Pastos/Cultivos	Cuerpos de Agua Artificial
Bosque de Mangle Alto	Sabanas	Zona Urbana Continua	Ríos y Otras Superficies de Agua
Bosque de Mangle Bajo	Palma Africana	Zona Urbana Discontinua	Mares y Océanos
Tique (Acoelorrhaphe wrightii)	Otras especies de Palma	Zonas Industriales y Comerciales	Lagos y Lagunas Salinas
			Camaroneras/salinerías

Land use and cover of
soil

Main product is to
know Honduran
territory

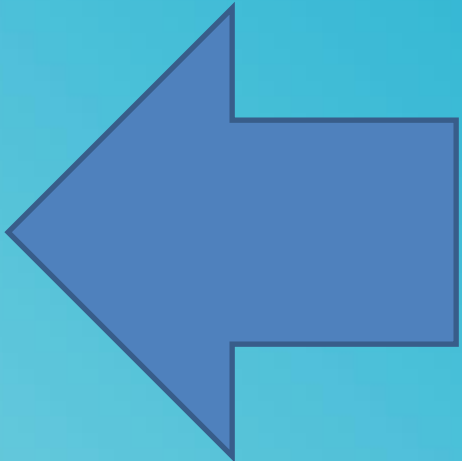




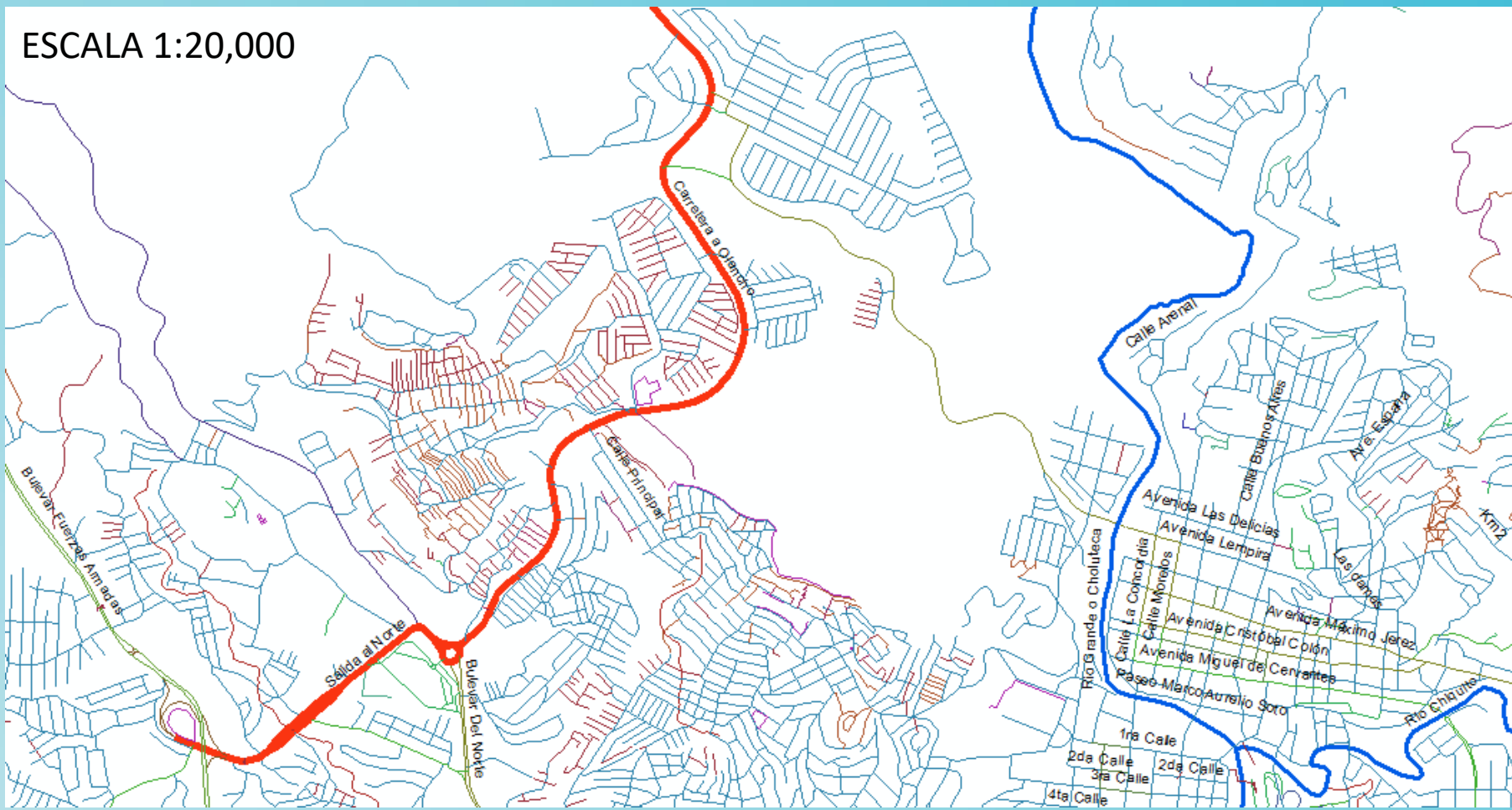
Elevation Model

Map made from digital Elevation Model of NASA. Curves at 30 mts

Utility for infraestructura, risk assestment hidrology and urban dynamics



ESCALA 1:20,000

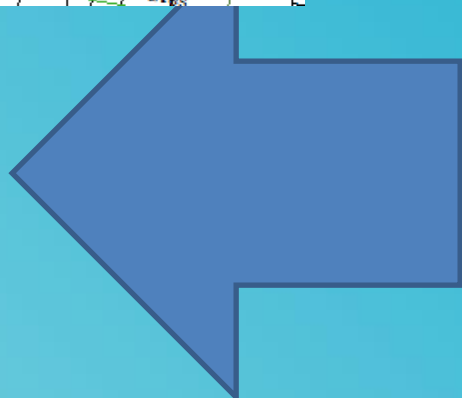
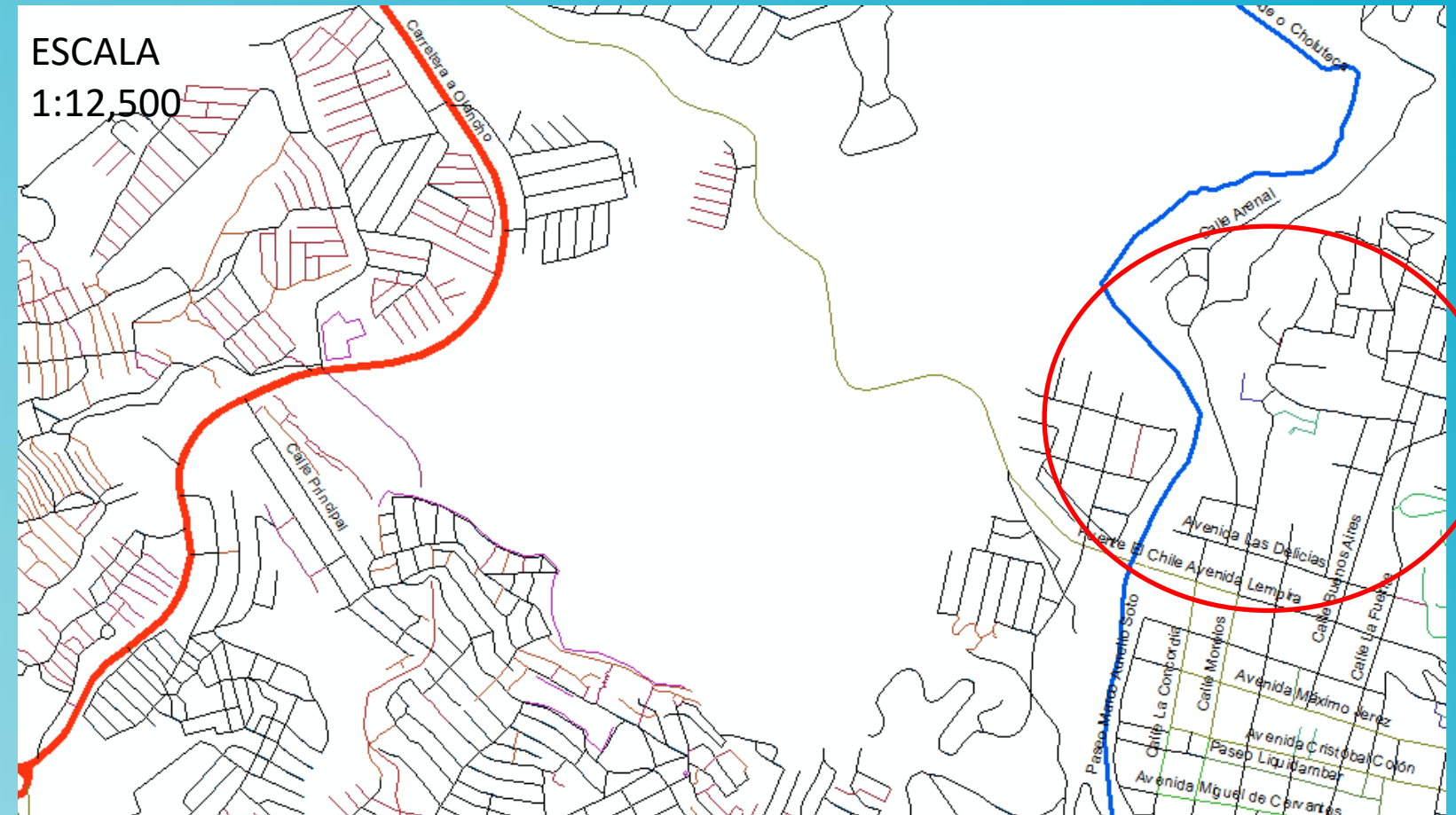


Geographics names

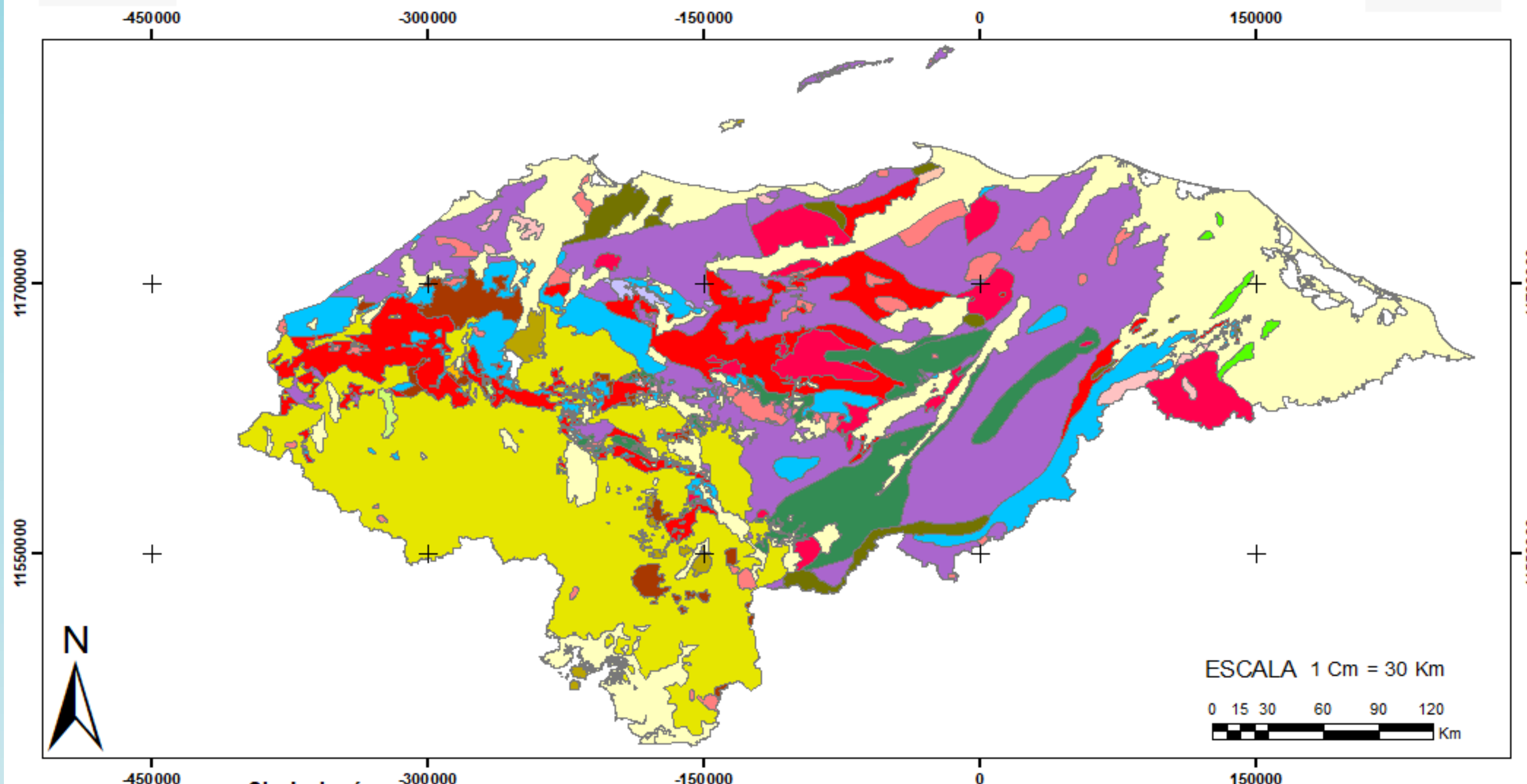
Need of knowing orography



ESCALA
1:12,500



Mapa de Geología de Honduras

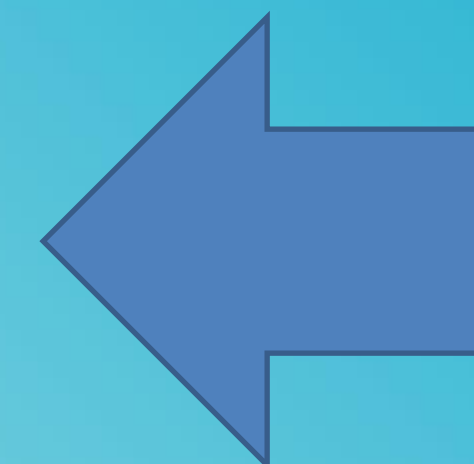


Simbología

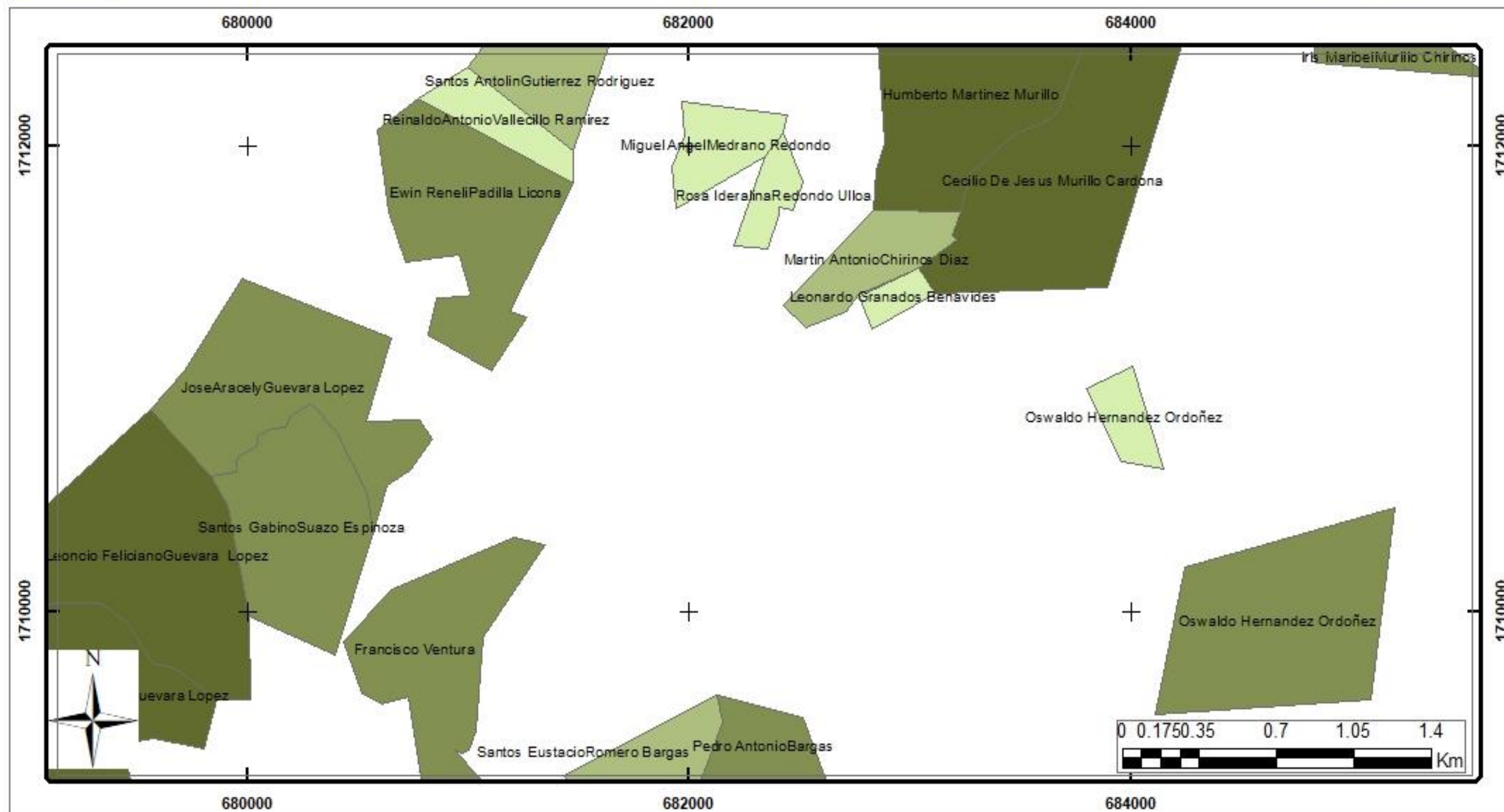
Geología

Ki-Rocas Intrusivas	Tg-Formación Gracias	Lago Yojoa
Tv-Rocas Volcánicas no diferenciadas	Qv-Volcánicos del Cuaternario	Ky-Grupo Yojoa
Ts-Formación Subinal	Qal-Aluvión del Cuaternario	Kva-Grupo Valle de Angeles
Tpm-Grupo Padre Miguel	QTbb-Formación Bragman's Bluff	Kag-Formación Aguán
Tm-Formación Matagalpa	Pzm-Esquistos Cacaguapa	KTi-Rocas Intrusivas
Ti-Rocas Intrusivas	Pzi-Rocas Intrusivas	JKhg-Grupo de Honduras

Geology maps its very
old 1968
It's necessary a new
edition



Mapa de Predios Iriona Colón.



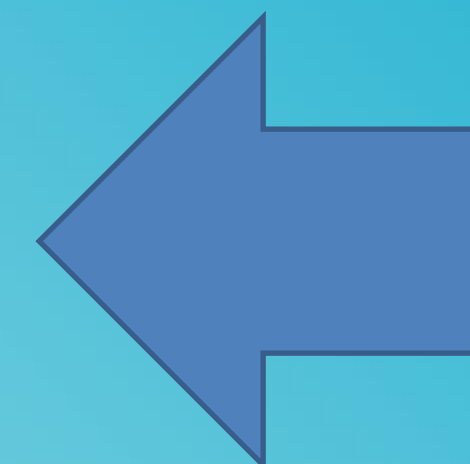
Simbología Área en Ha

0.049 - 15	40 - 71
16 - 39	72 - 150

Fuente: Proyecto de Ordenamiento Territorial
en la Biosfera del Río Plátano.
Elaboró: Dirección de Ordenamiento Territorial/ SPE

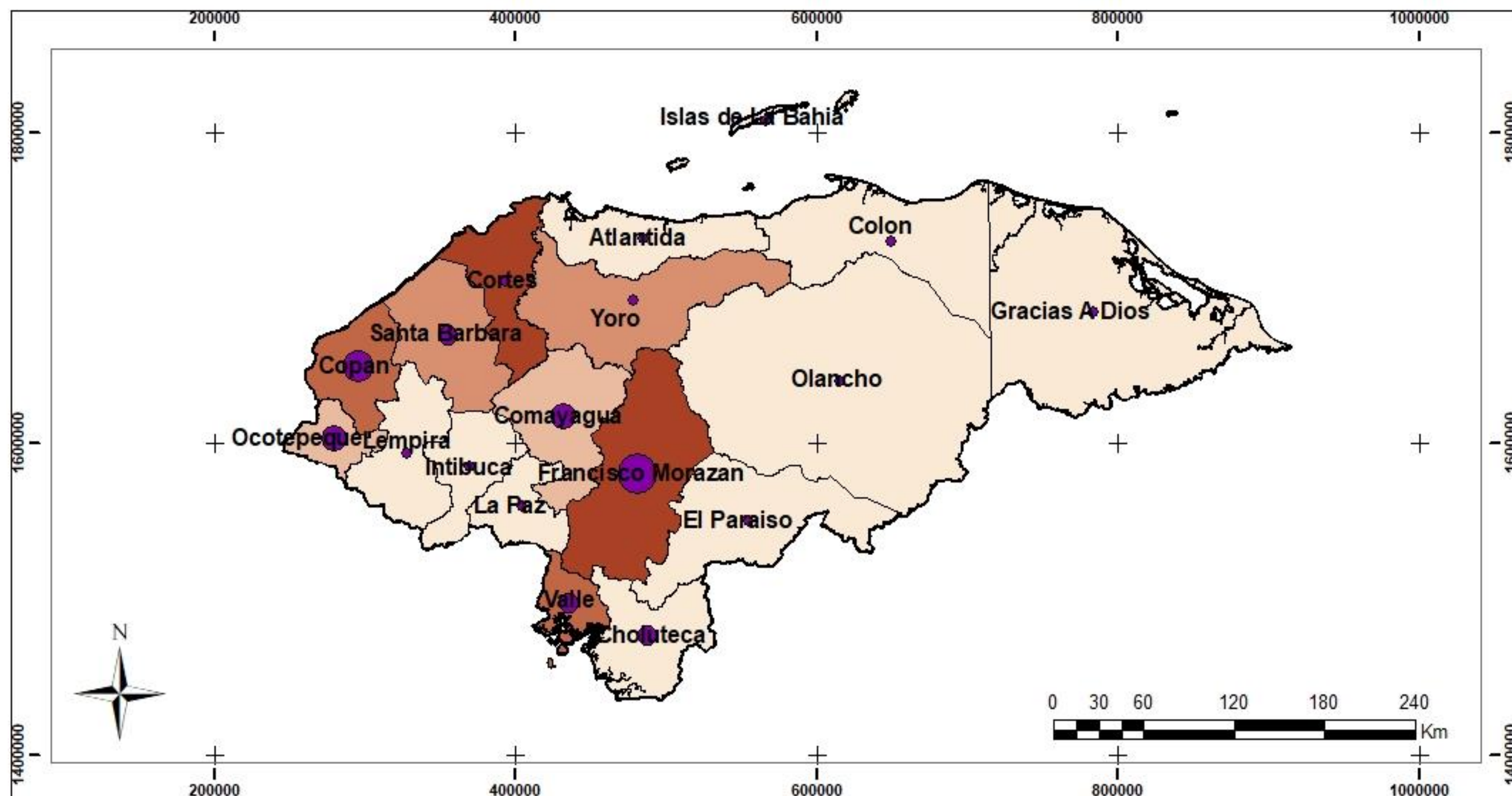
Land plots.
Land cadastre for
multipurposes

And for land use
planing





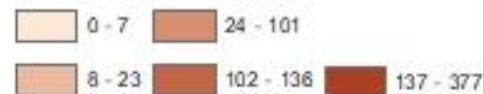
Viviendas Afectadas y Destruidas por Departamento.



Viviendas Destruidas



Viviendas Afectadas

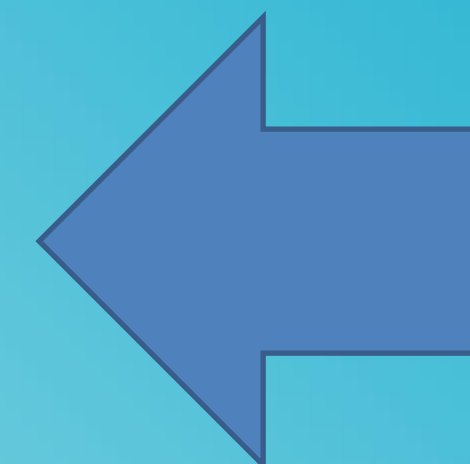


Fuente: Comité Permanente de Contingencias/
Datos COEN 25/09/2022.
Elaboró: Dirección de Ordenamiento Territorial/ SPE



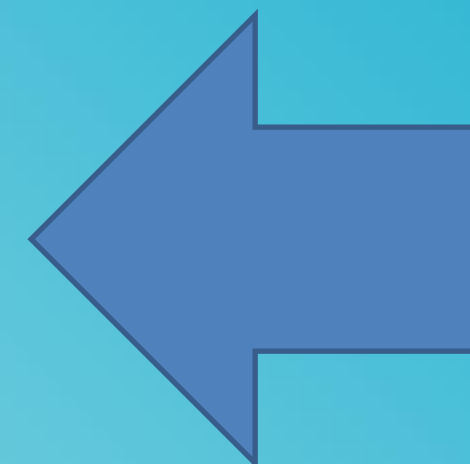
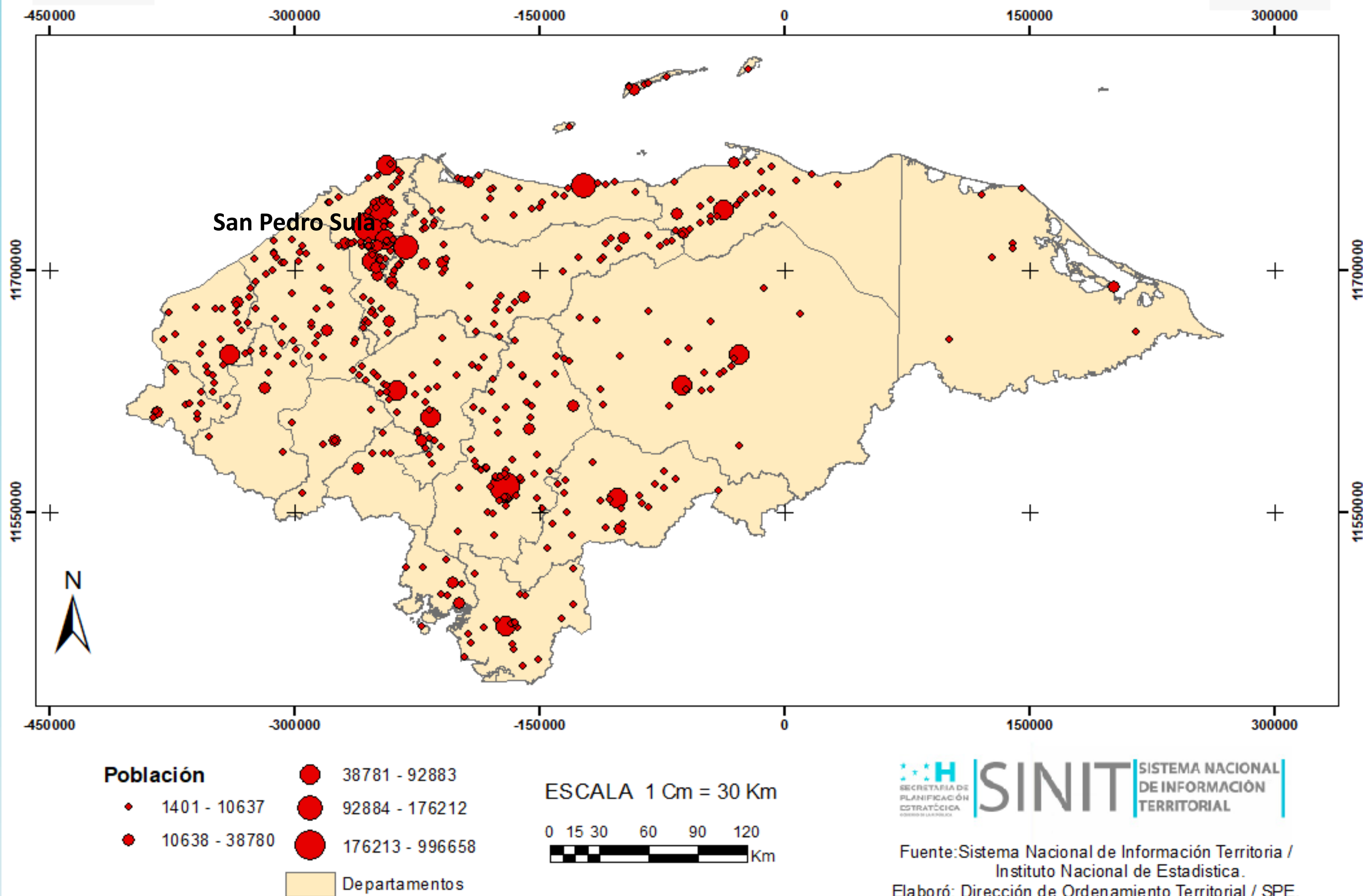
Infraestructura.

Houses damaged by
rainy season 2022



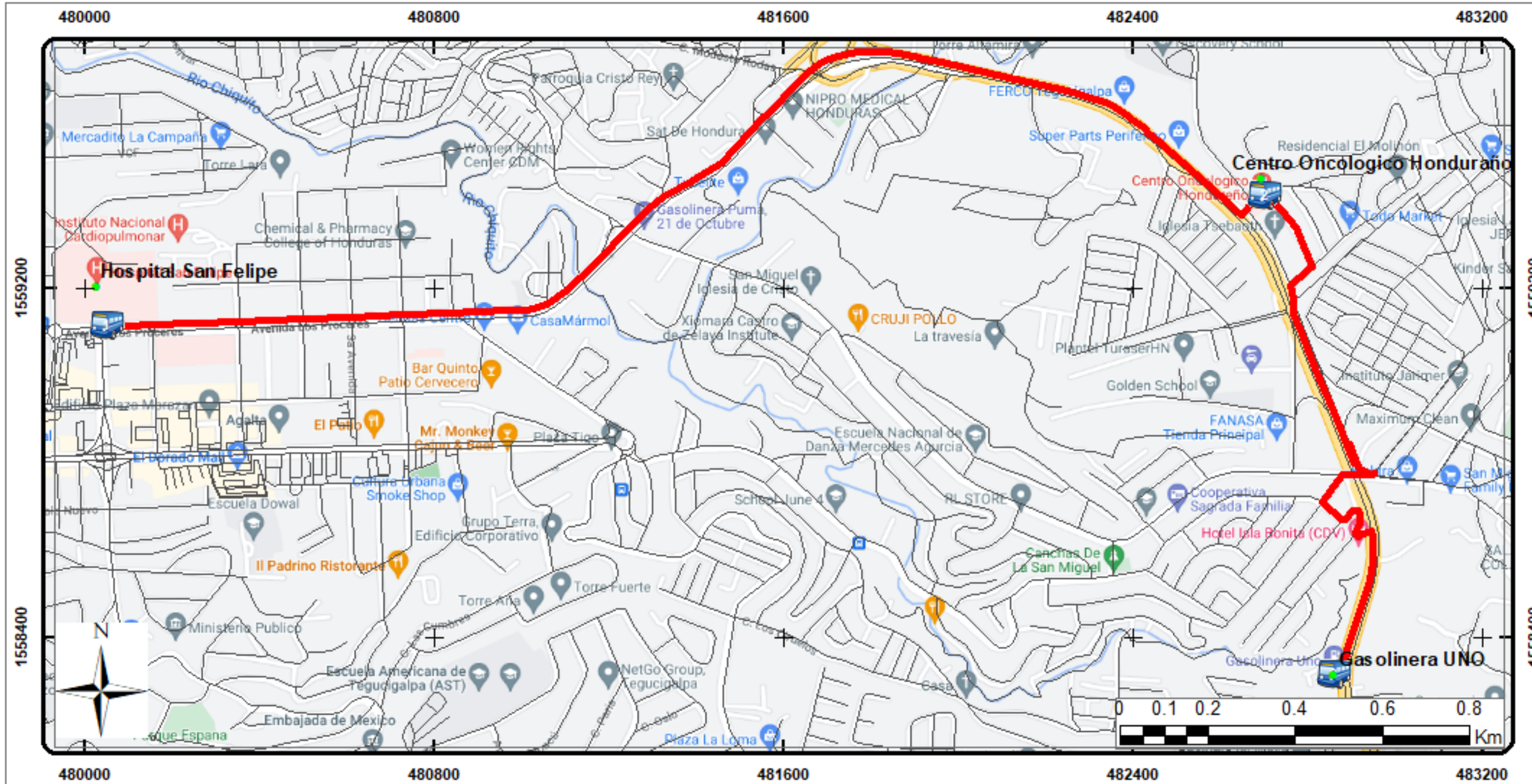
Mapa de Asentamientos Urbanos de Honduras

human settlements





Mapa de Ruta San Felipe Gasolinera Uno.



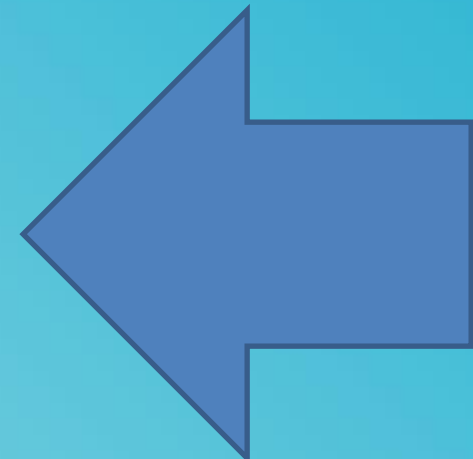
Simbología

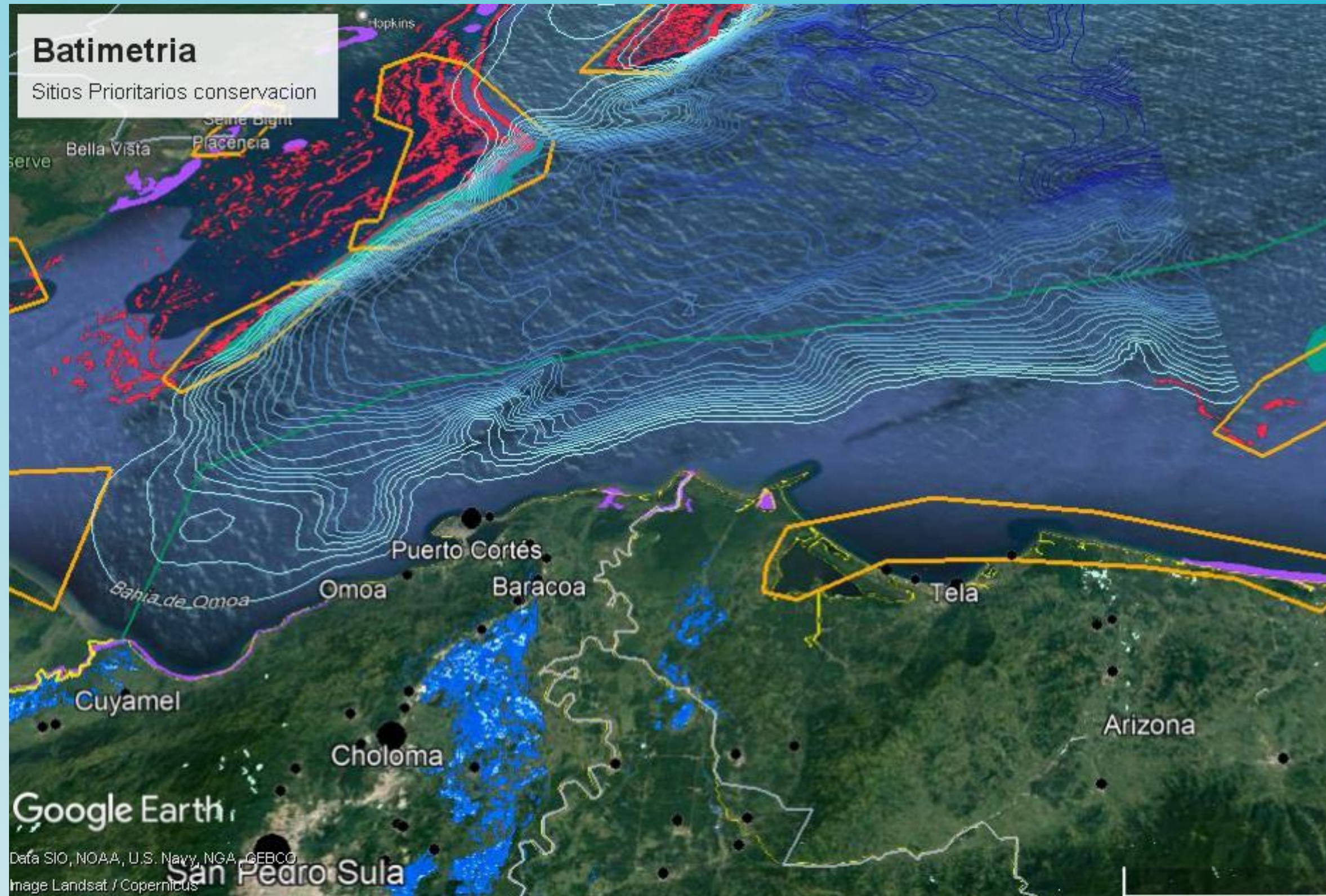
- ◆ Puntos de Referencia OT
- Ruta
- 🚌 Parada de Buses

Fuente: Openstreetmap
Elaboró: Dirección de Ordenamiento Territorial/ SPE

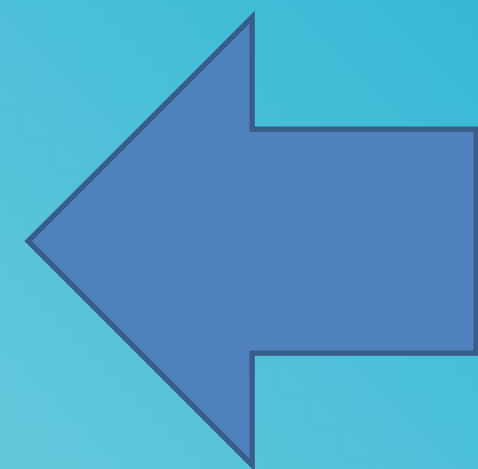


Transport network





Water
Knowledge of the
basins, sub-basins,
micro-basins and the
water network on the
digital elevation
model.
Bathymetry, Atlantic
Ocean Marine-Coastal
Conservation Sites



**It has been an honor to share
this presentation with you**