

Effective Partnerships

Take down barriers between
geospatial information users



Octobre 2022

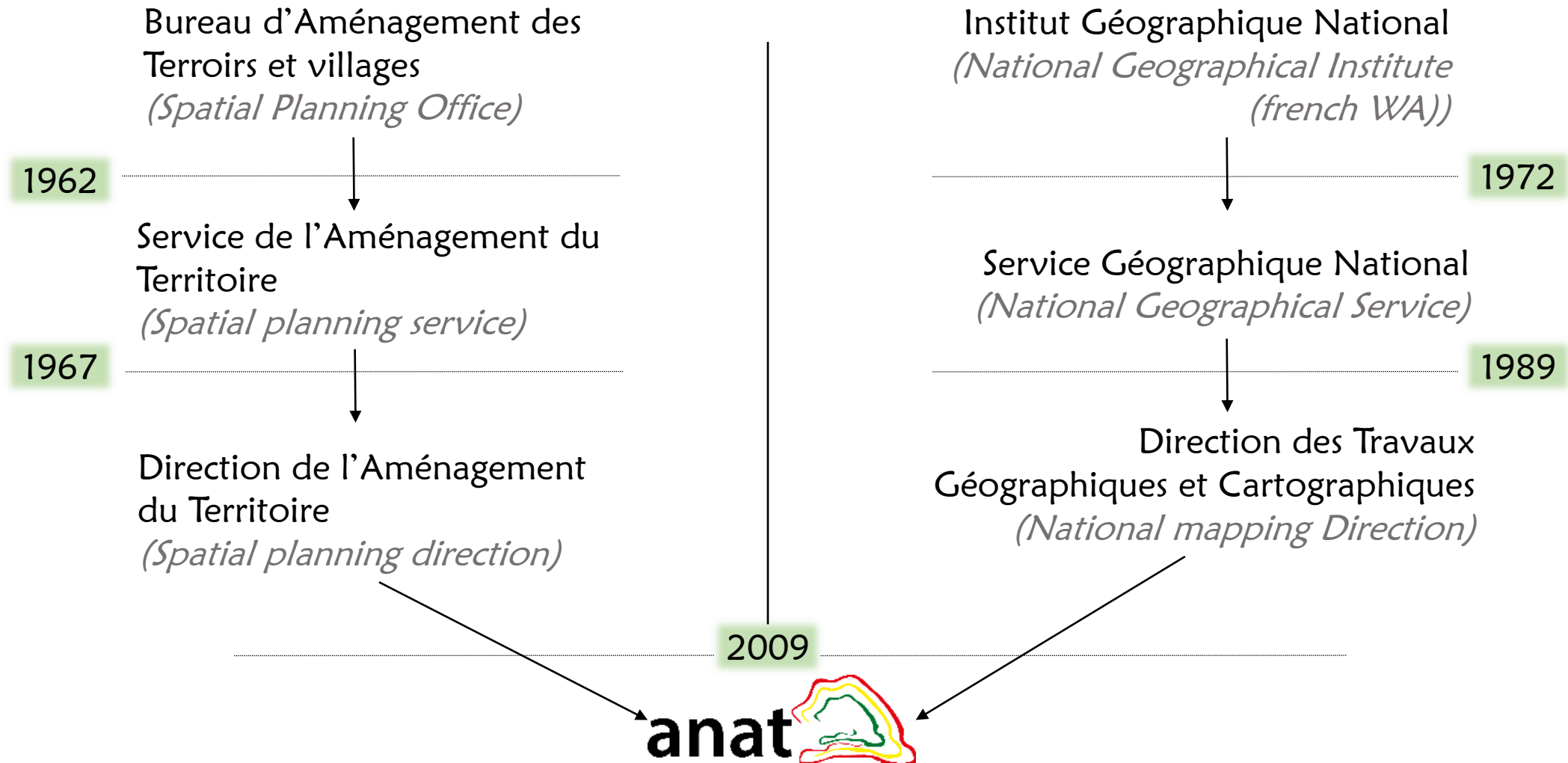
Plan

- About the agency
- Building the cooperation framework
- Collaborative projects



About the agency

Genesis



About the agency

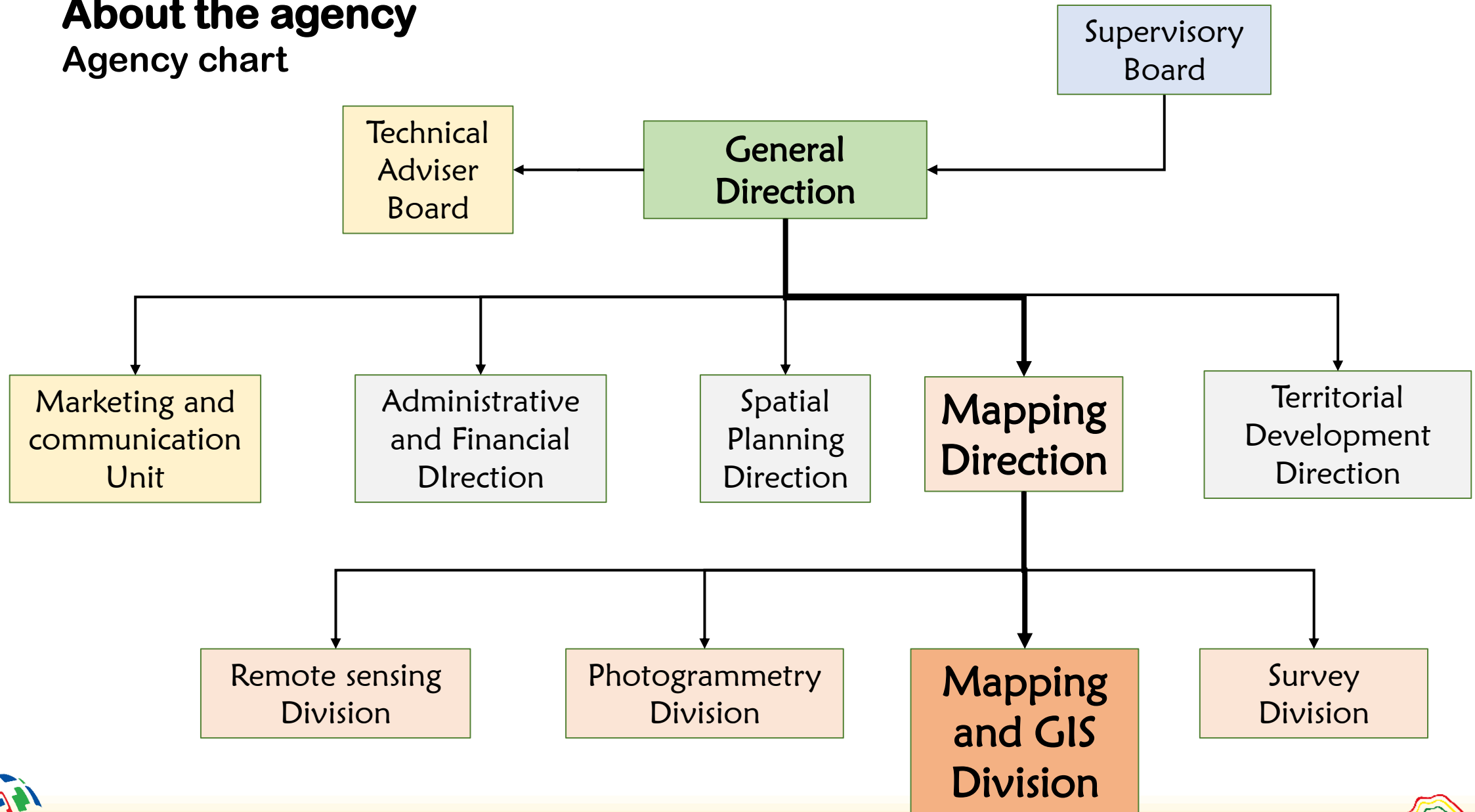
Overall duties

- To promote and implement government policy in terms of spatial planning, geographic and cartographic operations and improvement of the living conditions of the population;
- To implement all initiatives for the purpose of programming economic activities;
- To ensure the consistency of public infrastructure and facilities to better meet the needs of populations;
- To ensure territorial development of the country.



About the agency

Agency chart



About the agency

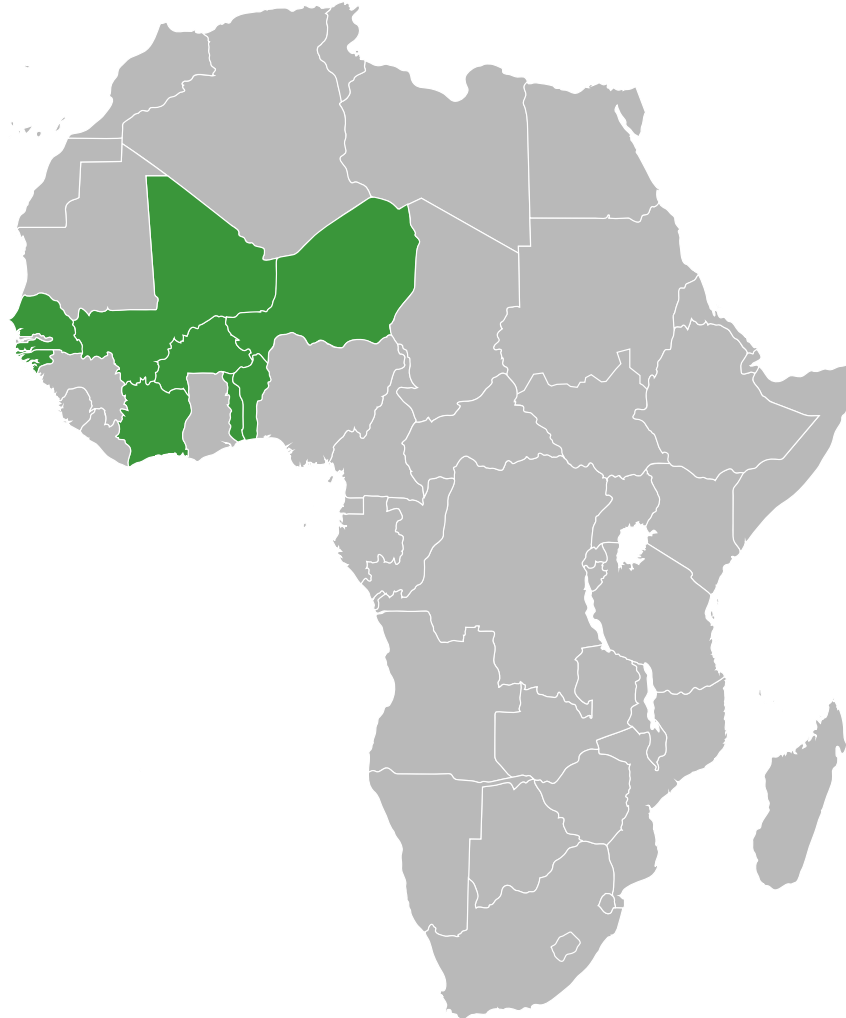
Mapping direction

- To ensure the collection, control and preservation of territorial information;
- To carry out the thematic mapping of Senegal;
- To produce and maintain basic geographic datasets nationwide (fundamental datasets);
- To monitor and control the geodetic equipment;
- To ensure the Government's representation in sub-regional and regional structures specialized in cartographic duties;
- To study and execute the demarcation of boundaries;
- hold the Secretariat of the inter-institutional Coordination and Coordination Group (GICC) responsible for steering the Senegal National Geomatics Plan (PNG).



Building the cooperation framework

Sub-regional cooperation and interoperability initiative inside **ECOWAS**



Sub-regional Spatial Data Infrastructure

8 countries

Bénin
Burkina Faso
Côte d'Ivoire
Guinée-Bissau
Mali
Niger
Sénégal
Togo

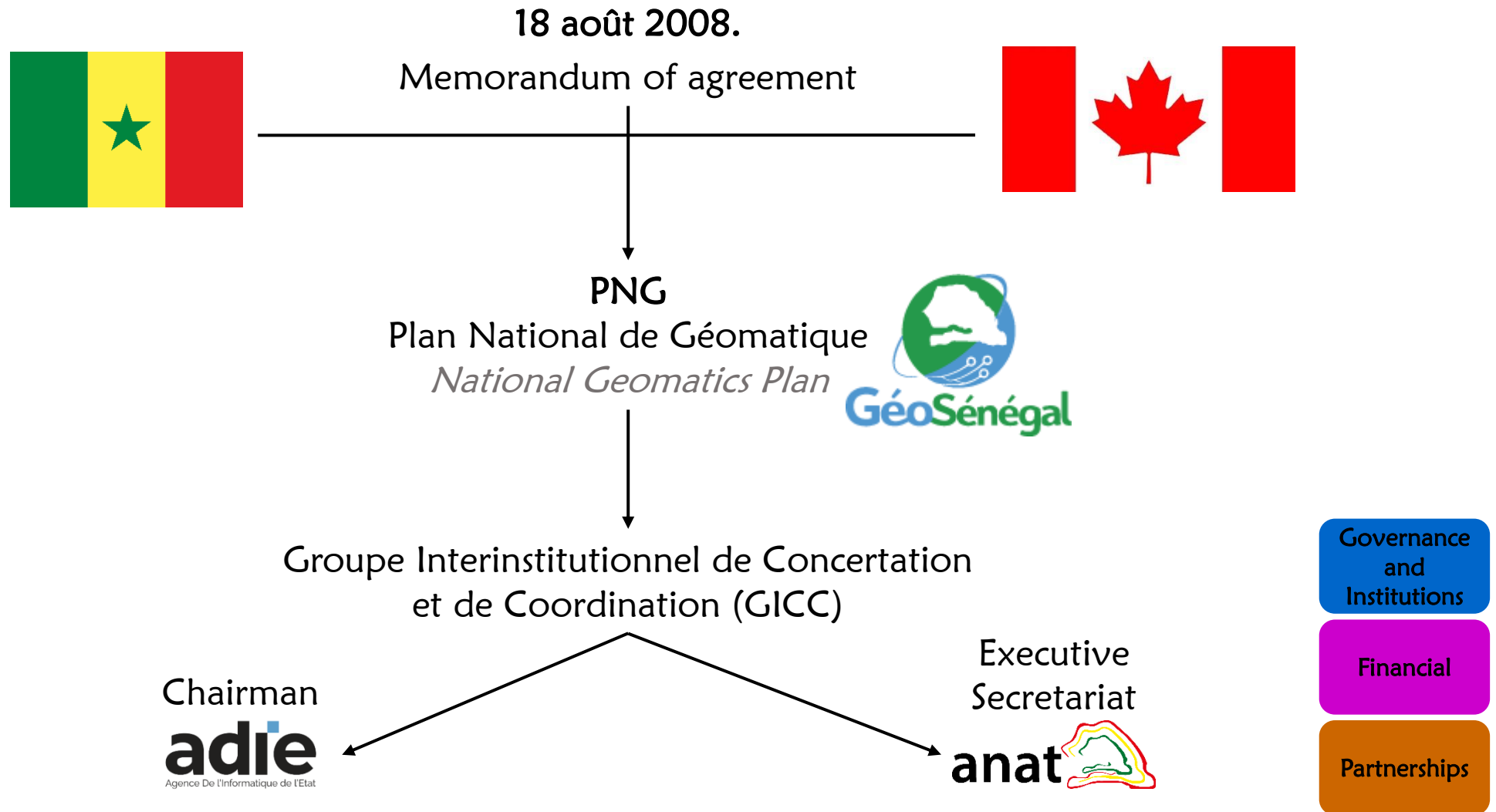
Governance
and
Institutions

Legal and
Policy

Partnerships



Building the cooperation framework



Building the cooperation framework

Governance – Legal and Policy

PNG & GICC



The PNG aims to :

- Build partnership;
- Assess the needs in terms of capacities and equipments;
- Bring data producers and users to get standards and data policies;
- Promote open data;
- Facilitate the creation of an effective and functional governance framework.



Collaborative projects PNG & GICC



is an online geospatial database. It contains

- Ortho-images
- Topographic standardized vector data
- Digital model
- Web Services (WMTS, WMS, WFS)



Téléchargez les données

Données vectorielles au
1/50 000



Format ShapeFiles et KML

Données vectorielles au
1/200 000



Format ShapeFiles et KML

Données vectorielles au
1/100 000



Format ShapeFiles et KML

Images satellitaires
ALOS 2,5 m



Format Geotiff

Modèles numériques de
terrain 30 m



Format Geotiff

Modèles numériques de
terrain 90 m



Format Geotiff

Modèles numériques de
terrain 5 m



Format Geotiff

Data

Communication
and engagement



Collaborative projects

PNG & GICC



+3000 metadata

according to ISO 19115 standard

Hierarchies

Cette page vous permet de parcourir les ressources dans le catalogue classifié selon une arborescence hiérarchique.

The screenshot displays the Géo-Répertoire web application. On the left, a hierarchical tree under 'Catalogue' lists various categories such as 'Type de contenu', 'Catégorie de sujet ISO', and specific topics like 'Limites administratives et politiques', 'Agriculture et agronomie', 'Atmosphère et climatologie', 'Biologie et écologie', 'Économie et finance', 'Cadastre', 'Culture, sciences sociales et démographie', 'Élévation et produits dérivés', 'Environnement et conservation', 'Équipement et infrastructures', 'Géologie et géophysique', 'Santé et épidémiologie', 'Imagerie et cartographie de référence', 'Ressources hydrographiques', 'Topographie et géodésie', 'Militaire', 'Océans et estuaires', 'Réseau de transport', and 'Réseaux de télécommunication'. On the right, the search results section shows '3062 résultats' with a 'Filtre' button and a pagination control showing '1-10 affichés' and page numbers '1', '2', '3', '4', '5', and '>'. Three results are visible, each with an 'anat' logo: 'Carte de L'Afrique de l'Ouest- SENEGAL-MALI-MAURITANIE feuille de Bakel_1956', 'Carte régulière du sénégal feuille de Bakel_1935', and 'PNADT - superficies de cultures irriguées en 2000'. The first result includes a description: 'C'est une Carte de L'Afrique de l'Ouest- SENEGAL-MALI-MAURITANIE -Feuille ND-28XVIII-Reimp.Avril 161'.

Standards



Collaborative projects

PROCASEF



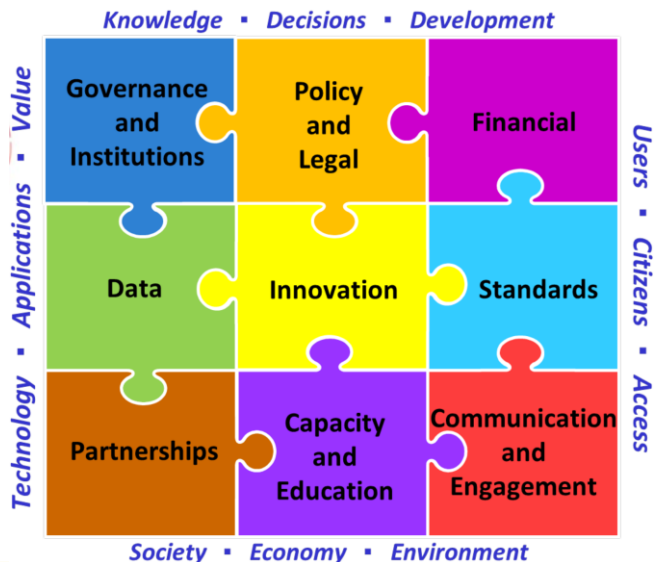
WORLD BANK GROUP



Korea
Green Growth
Trust Fund



Municipal Land
Information System



Goals : Security of land tenure

- To ensure land ownership issuing with transparency
- To ensure a decentralised management of land rights
- To allow to cross multiple data sources such as fundamental datasets (roads and their rights, landuse, water bodies...), thematic data (occupation plan, projected amenities...), imagery services and others
- Take into account of all the stakeholders and build a regulated and innovative environment according to the UN-GGIM/IGIF (PNG update



Collaborative projects

- 1/200 000 Nationwide update ongoing...
- 1/50 000



About mapping

- HiRes imagery acquisition (nationwide)
- Modernize the geodetic network
- Strengthen the Geospatial Data Infrastructure

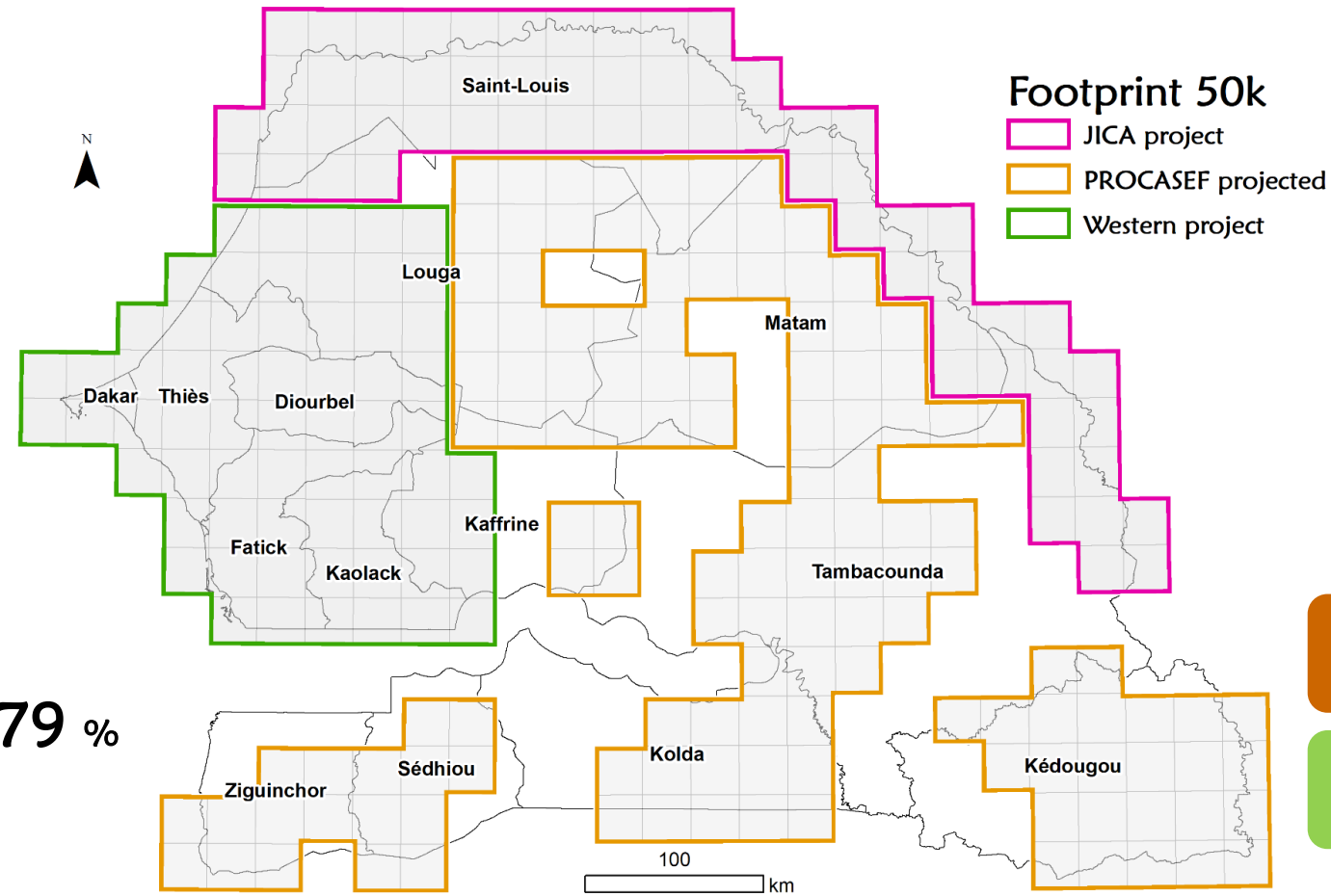
Map index

2013 JICA project
15%

Since 2018 Western
part 19%

About to start
PROCASEF 45%

79 %



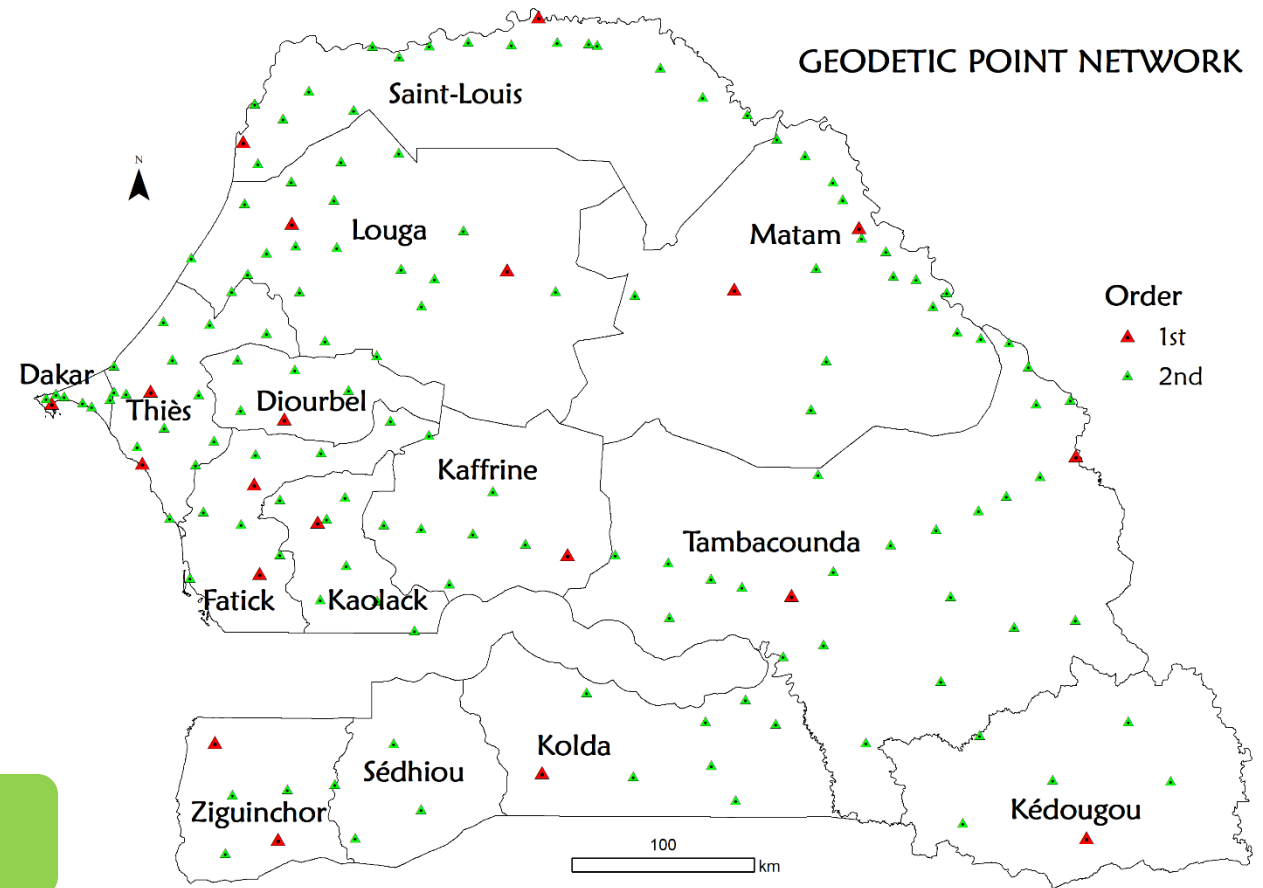
Partnerships

Data



Collaborative projects

- To deliver Country Action Plan according to the IGIF;
- Based on the PROCASEF case studies to strengthen the geodetic reference frame with CORS network for a better coverage and accurate positionning;



Partnerships

Data

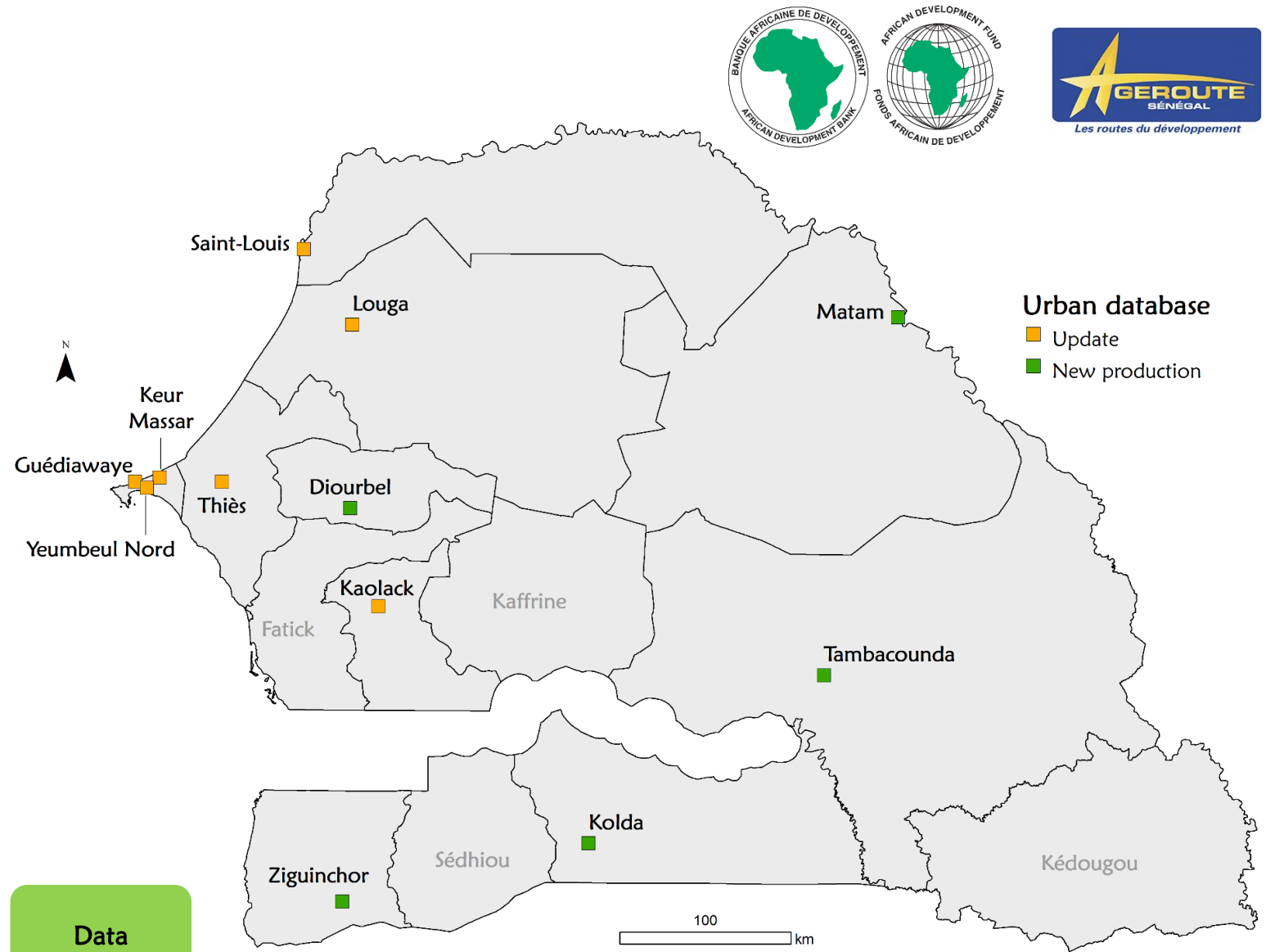


Collaborative projects

PROMOVILLES

Objectives :

- Create reliable and high precision geospatial information for selected cities
- Strengthen municipalities on managing and planning using geospatial information



Collaborative projects

GNSS network



IGS station - Tide gauge ; DATG 2017
(in patnership with SONEI et IGN)

IGS Station : DAKR 2012 (in patnership with ACDI/RNCan/Canada)



Antenna IGS on the top of
the roof ANAT



PC

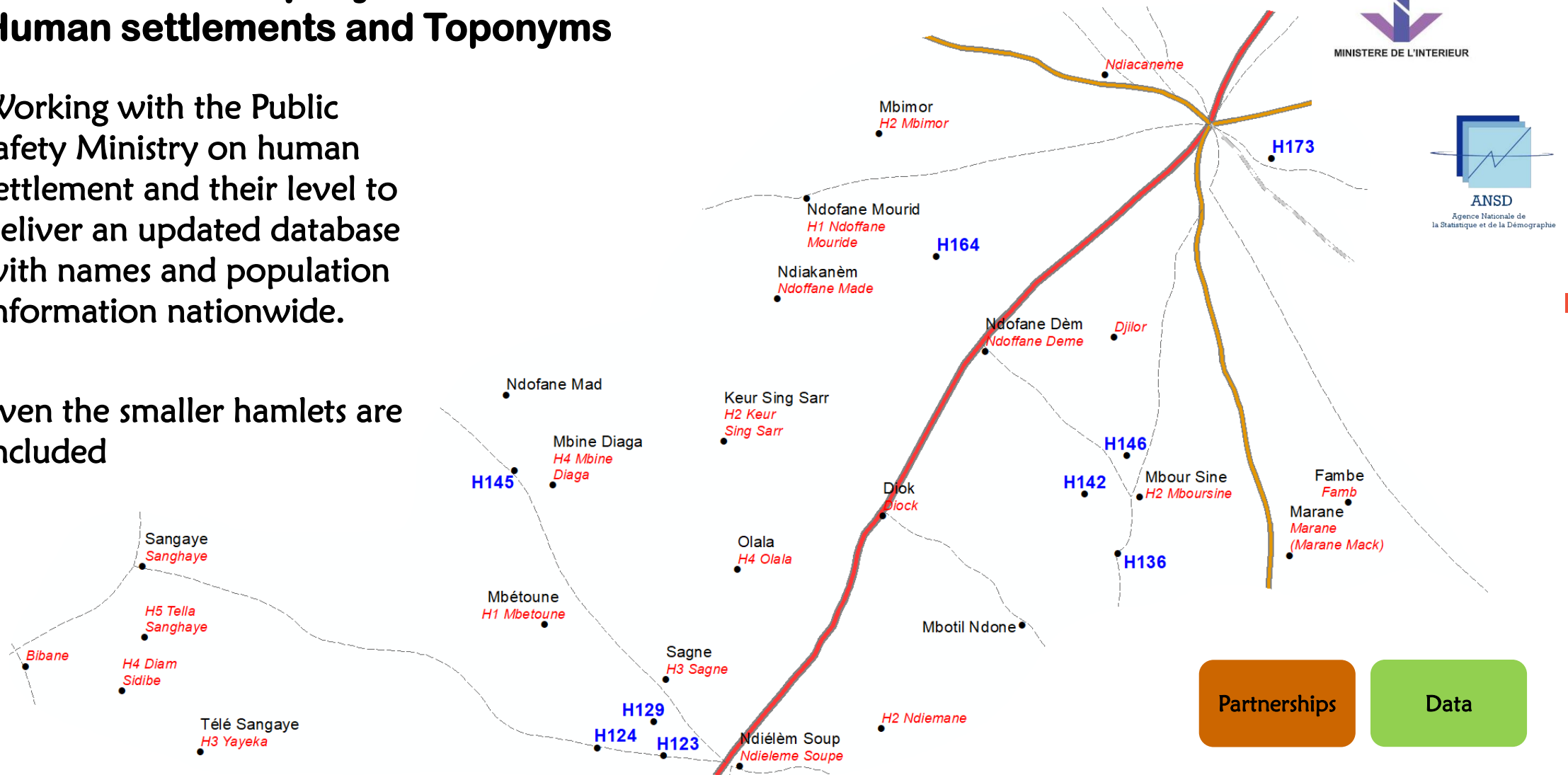


Collaborative projects

Human settlements and Toponyms

Working with the Public safety Ministry on human settlement and their level to deliver an updated database with names and population information nationwide.

Even the smaller hamlets are included



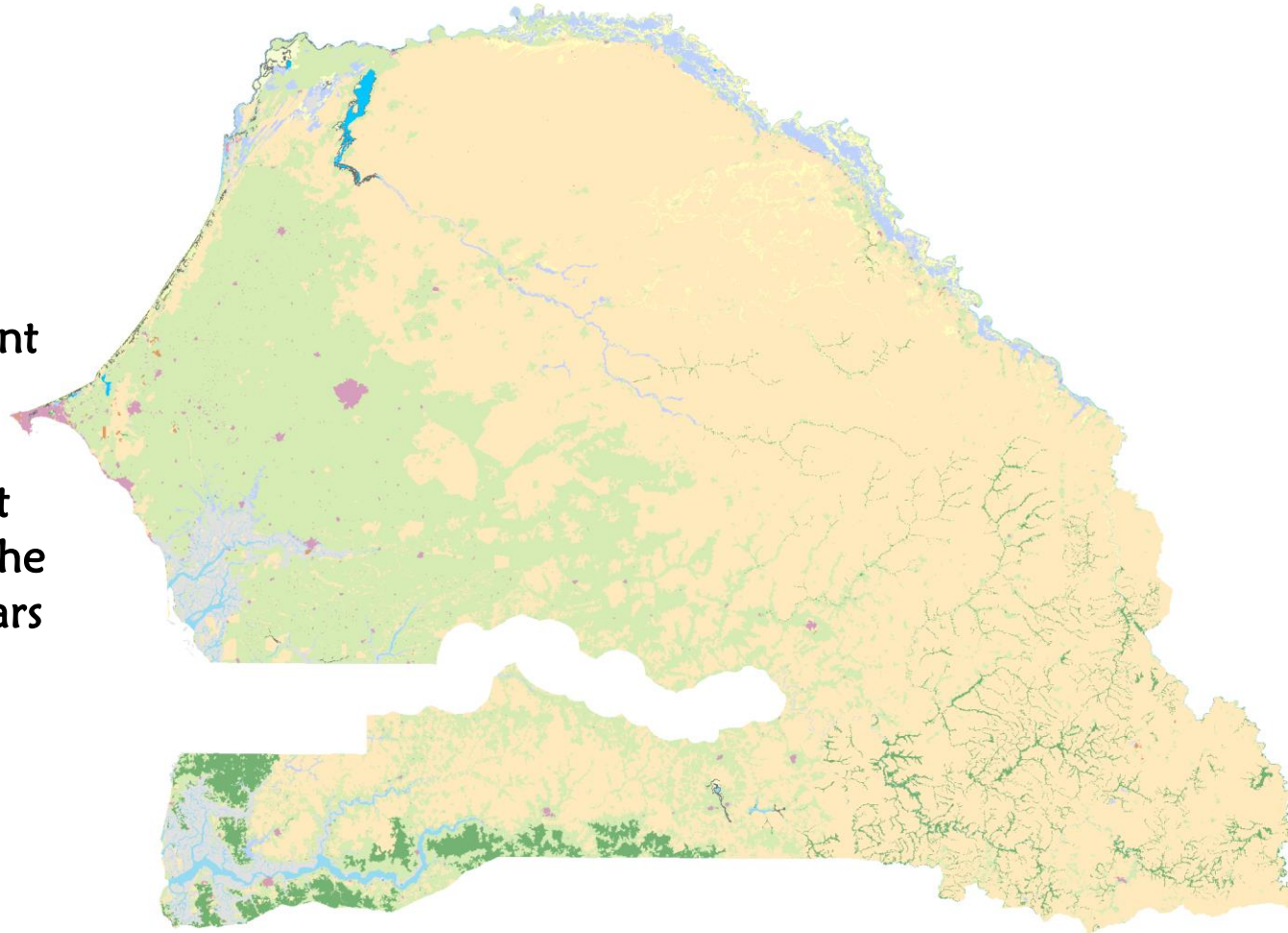
Collaborative projects

Land cover mapping for :

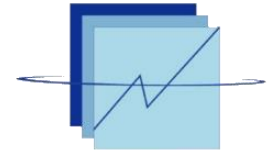
- 1990
- 2000
- 2010
- 2015
- 2020

National plan for land planning and development

National landcover count between 2010 et 2015. The update frequency is 5 years



Centre de Suivi Ecologique



ANSD

Agence Nationale de la Statistique et de la Démographie

Partnerships

Data



Thank you



Octobre 2022



National spatial planning and mapping Agency
Bénilde Oudiane
benilde.oudiane@anat.sn