

Slovenia's Smart Specialisation Strategy

S4

TABLE OF CONTENTS

WHAT IS S4.....	5
VISION AND STRATEGIC OBJECTIVES	6
1.1. What is the state of play	6
1.2. Objectives: where are we headed	8
1.3. How do we get there – S4 concept	8
2. S4 PRIORITY AREAS	9
2.1. HEALTHY WORKING AND LIVING ENVIRONMENT	13
2.1.1. Smart cities and communities	15
2.1.2. Smart buildings and homes, including wood chain	15
2.2. NATURAL AND TRADITIONAL RESOURCES FOR THE FUTURE	17
2.2.1. Networks for the transition to circular economy	17
2.2.2. Sustainable food production	19
2.2.3. Sustainable tourism	20
2.3. (S)INDUSTRY 4.0.....	22
2.3.1. Factories of the Future (FoF)	22
2.3.2. Health – medicine	24
2.3.3. Mobility	26
2.3.4. Development of materials as end products	27
3. INTERNATIONAL DIMENSION – HORIZONTALLY	29
4. POLICY MIX.....	32

Our understanding of smart cities?

Development opportunities of Slovenian Municipalities

- Smart City Platform for participatory governance



Partnership for a green economy focuses on smart management of resources in cities

CONNECTED FOR GROWTH

Transition to a Green Economy in Slovenia
SUMMARY

10) SUPPORTING E-ACTIVITIES:

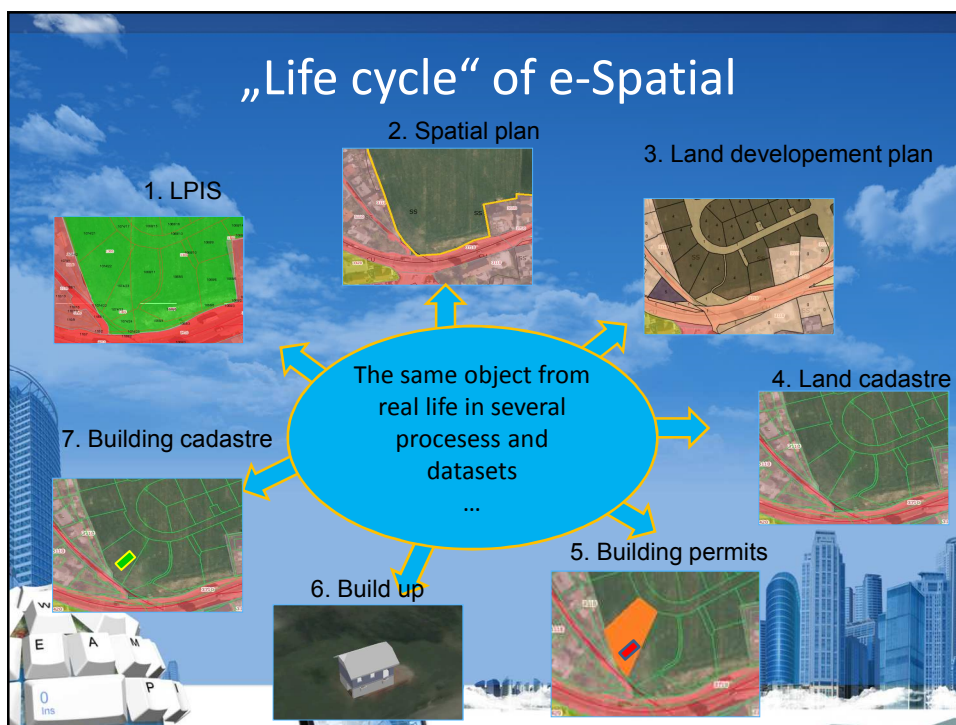
- E-SPACE
- E-WATERS
- E-ENVIRONMENT

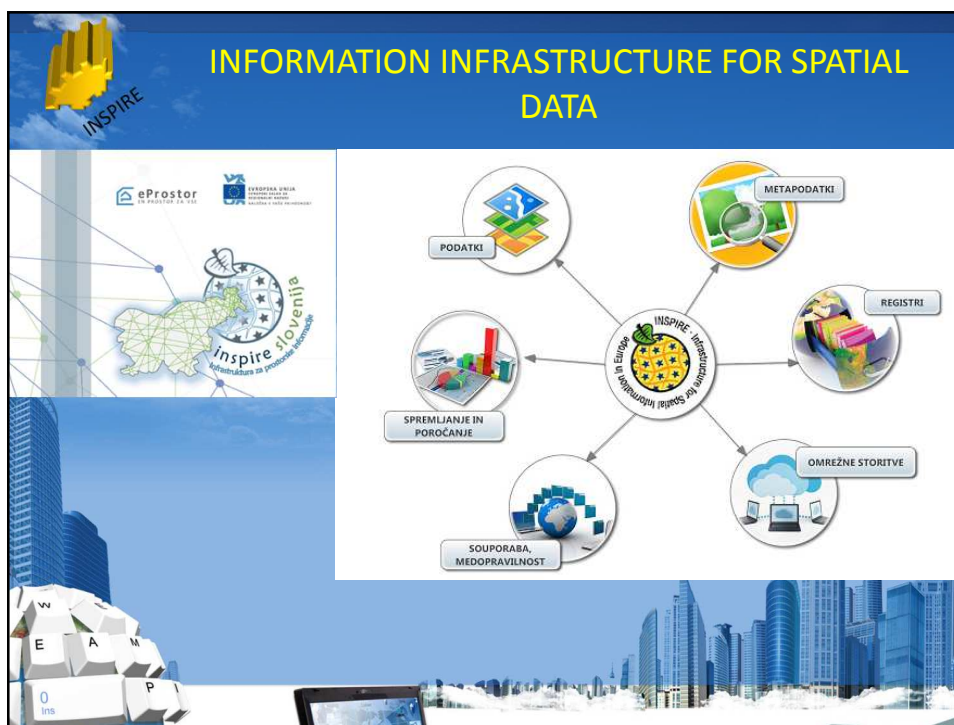
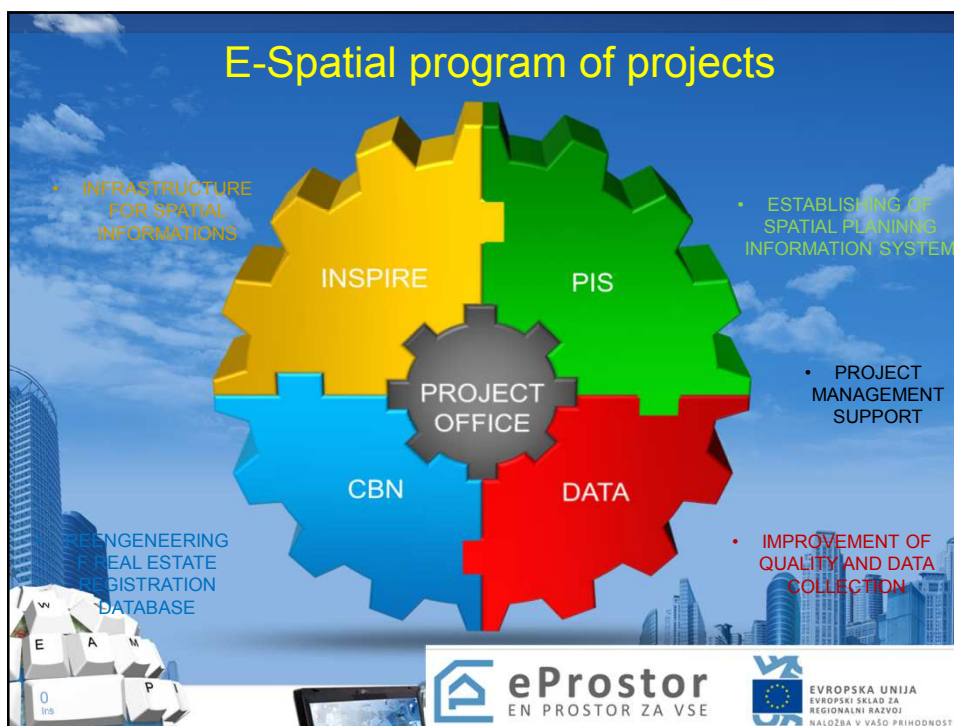
Effective decision-making and management of the physical space and environment, along with ensuring green growth, require the establishing of a modern data infrastructure through which a standardised, rapid, and easily accessible system provides high-quality data on the physical environment, and on services related to it. In order to analyse and process data in various processes, we need to establish a modern geographical information system on the national level.

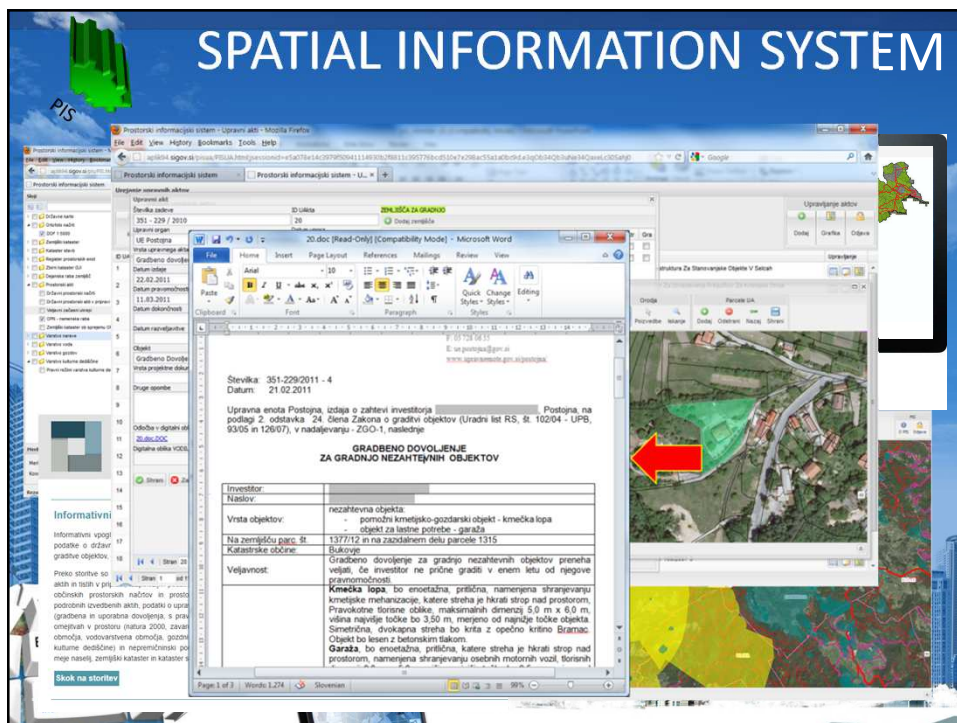
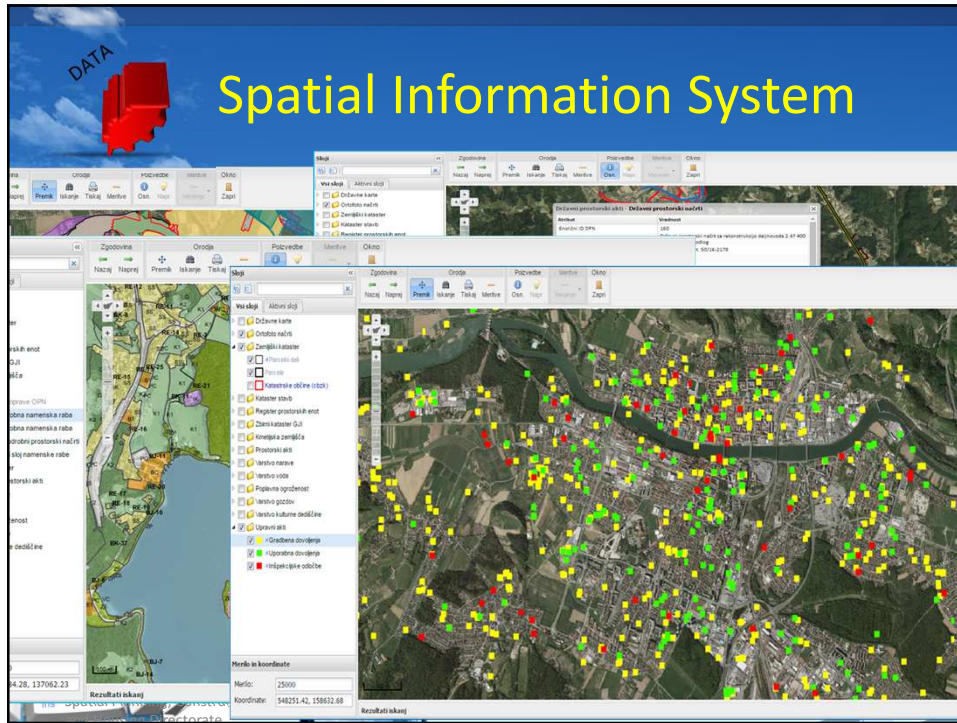
Geospatial information to shape and develop smart, resilient and sustainable cities and societies in Slovenia



„Life cycle“ of e-Spatial







REENGINEERING OF REAL ESTATE REGISTRATION DATASETS

The image is a collage illustrating the reengineering of real estate registration datasets. At the top left, a blue map of Hungary is shown with the text 'CBN'. The central focus is a computer monitor displaying a 3D city model with green overlays, representing spatial data. To the left of the monitor, there are several software interface elements, including a window titled 'PROSTOR' and another with a search bar. Below the monitor, a server room is visible, and to the right, there is a flowchart and a network diagram. The background is a blue sky with clouds.

What is underground?

Consolidated cadastre of public infrastructure

The image is a collage illustrating the concept of underground infrastructure. At the top, the text 'What is underground?' and 'Consolidated cadastre of public infrastructure' is displayed. Below this, there is a 3D city model with colorful lines representing underground infrastructure. To the right, a computer screen shows a map interface with a legend and various layers. In the bottom left corner, a keyboard is visible. The background is a blue sky with clouds.

