



Ordnance Survey
OSi Ireland

Moving beyond the map

*Ireland's geospatial transformation,
enabling a smarter society*

Colin Bray, OSi CEO



Rialtas na hÉireann
Government of Ireland



eurogeographics

63  **members** **46**  **countries**
from the whole of geographical Europe

Members invest over **€1.5B**  each year in the development of geo-information

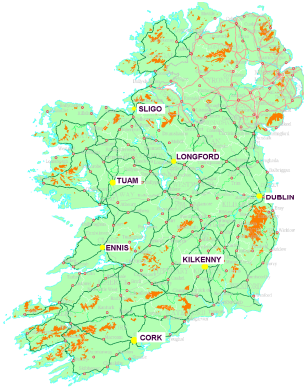
Relied on by European Commission Businesses & Citizens 

Share best practice through expert knowledge exchange networks 

66,000  people and over are employed by EuroGeographics members



Irish National Mapping Agency



- › Established in 1824
- › State Body since 2002, mandated under the OSi Act 2001
- › To create, maintain and provide the definitive national mapping, related geographic records and services for the State
- › Under the Department of Housing, Planning and Local Government
- › 230 staff (330 in 2008)
- › Headquarters in Dublin

Local Mapping



Regional Mapping



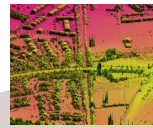
National Mapping



National Imagery



Height Data



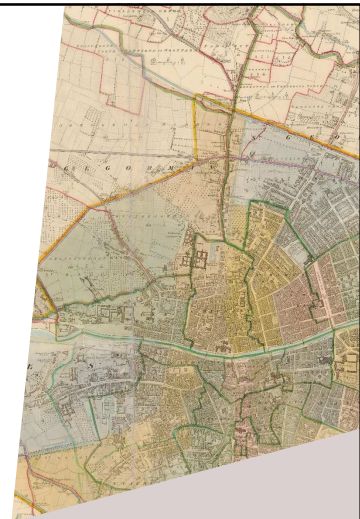
Boundary Data



Rialtas na hÉireann
Government of Ireland

Traditional map making

Our primary role was the creation of cartographic representations



- › Traditionally focused on 'map sheets' and cartographic representation
 - Now about intelligent real-world features
- › Traditionally focused on geographic referencing (Easting/Northing, Lat/Long)
 - Now about uniquely referenced database objects

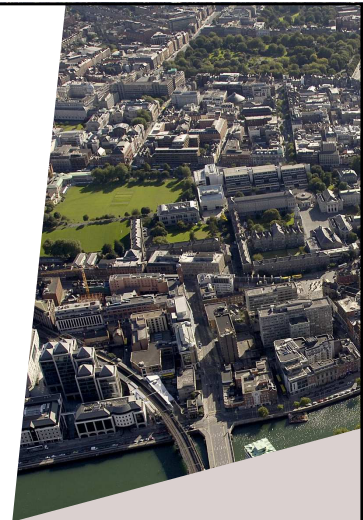


Rialtas na hÉireann
Government of Ireland

Our world has changed



Building smart societies
requires smart national
geospatial data infrastructure
(moving beyond the map)



Rialtas na hÉireann
Government of Ireland

Moving beyond the map

Key challenges we addressed (an Irish perspective)

- › Cultivating a **mind-set change** from traditional cartographic practices to a systems approach for modelling and maintaining the real world
- › Ensuring our fundamental reference data is **fit for modern use** (compatible with emerging technologies, Internet Of Things and smart societies)
- › Adopting a federated approach for national geospatial systems and data integration to **remove duplication & complexity**
- › Building strong **collaborative relationships**, supported by national strategy and policies, to deliver effective national geospatial infrastructure



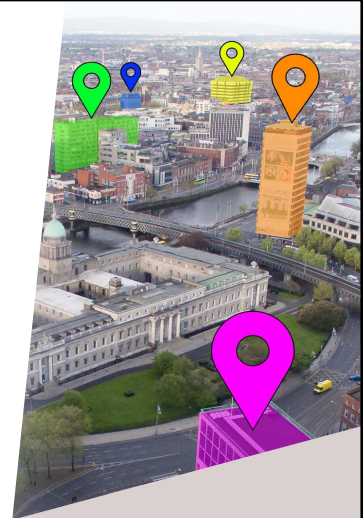
Rialtas na hÉireann
Government of Ireland

Modelling the real world

Creating an authoritative 'real-world, object orientated' geospatial platform



- › Developed new real-world data model
- › Reengineered legacy cartographic data
- › Created a single source of national topographic truth (scale-independent)
- › Over 50 million uniquely referenced objects (Unique Geographic Identifier - UGI)
- › Maintained object life-cycles



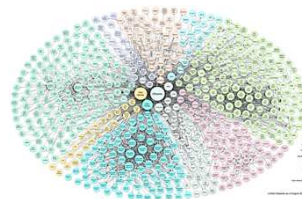
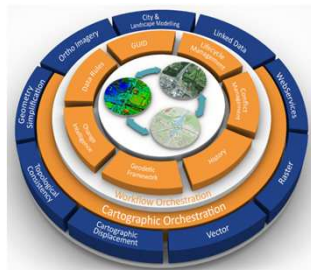
Rialtas na hÉireann
Government of Ireland

Delivering smart geospatial data



Adoption of industry standards to ensure interoperability

Implementation of rule-based data management to persist quality

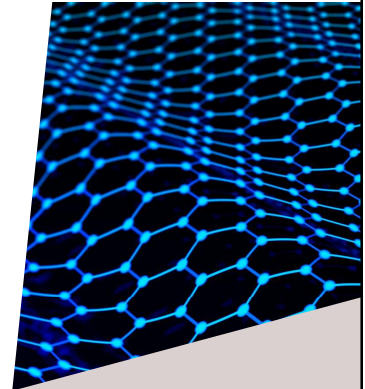
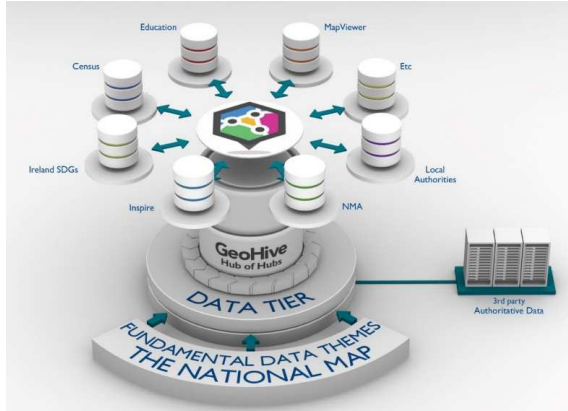


Publication of Linked Data as the next generation of geospatial referencing



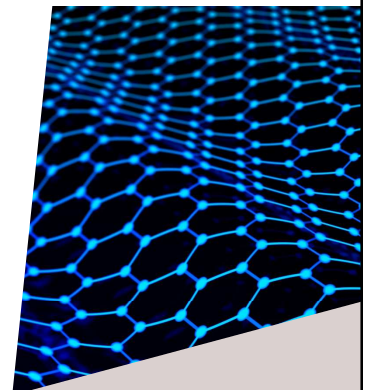
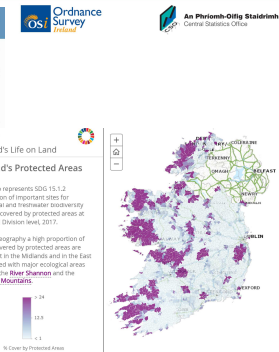
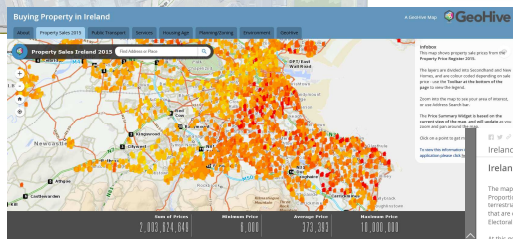
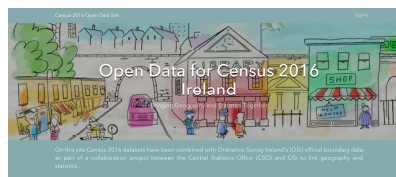
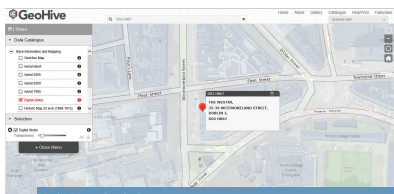
Rialtas na hÉireann
Government of Ireland

Ireland's national geospatial data hub



Rialtas na hÉireann
Government of Ireland

Smarter use of societal data



Rialtas na hÉireann
Government of Ireland

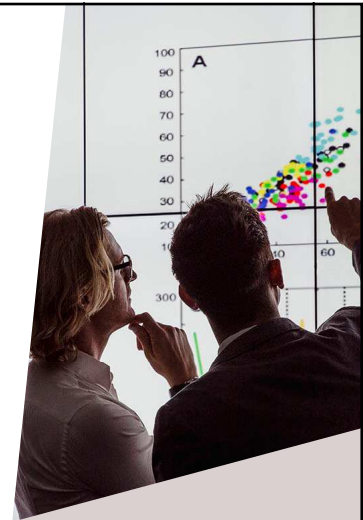
Geospatial and Statistical leadership

OSi and Irish Statistics Office are developing the national data infrastructure



Governments, businesses and civil society together with the United Nations (UN) have started to mobilise efforts to achieve the Sustainable Development Agenda for 2030. Universal, inclusive and indivisible, the Agenda calls for action by all countries to improve the lives of people everywhere. Ireland's Sustainable Development Goals National Implementation Plan 2018-2023 provides a whole-of-government approach to implement the 17 Sustainable Development Goals (SDGs).

<http://irelandsdg.geohive.ie/>

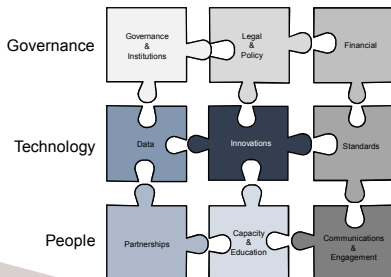


Rialtas na hÉireann
Government of Ireland

Aligning national strategy with global frameworks

OSi is adopting the UN Integrated Geospatial Information Framework (IGIF)

- Ordnance Survey Ireland Statement of Strategy 2019-2021



INTEGRATED GEOSPATIAL INFORMATION FRAMEWORK
A STRATEGIC GUIDE TO DEVELOP AND STRENGTHEN NATIONAL GEOSPATIAL INFORMATION MANAGEMENT
PART 1: OVERARCHING STRATEGIC FRAMEWORK



Rialtas na hÉireann
Government of Ireland

In summary

We've moved **beyond the map**
to enable geospatial play a more significant role
in developing a **smart nation**
for the benefit of Ireland's
citizens, business and policy-makers



Riailtas na hÉireann
Government of Ireland



Thank you for your attention

