



# UN Expert Group for the Integration of Statistical and Geospatial Information

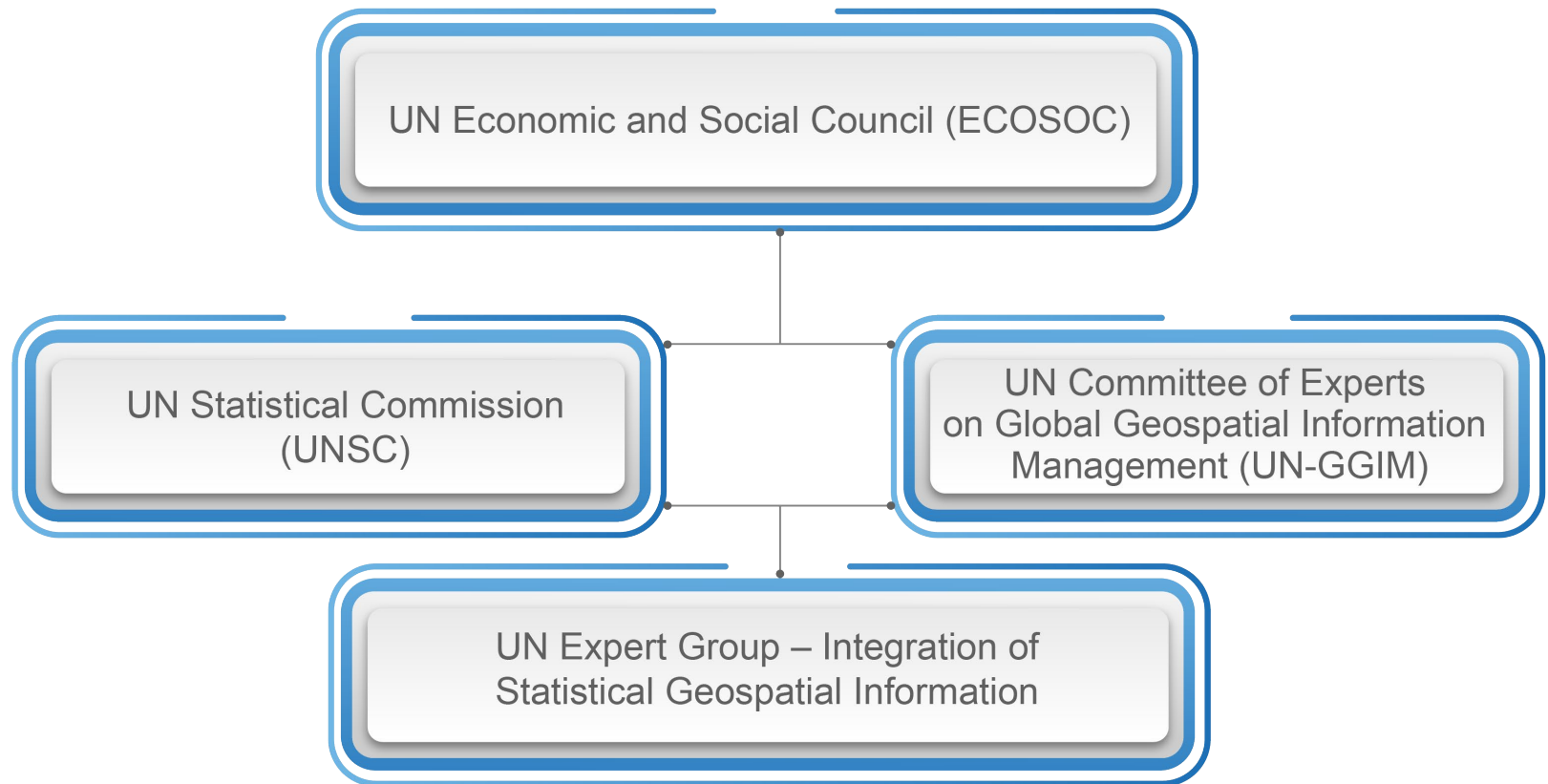
GGIM9

Open side event

**Co-Chairs UN Expert Group:**

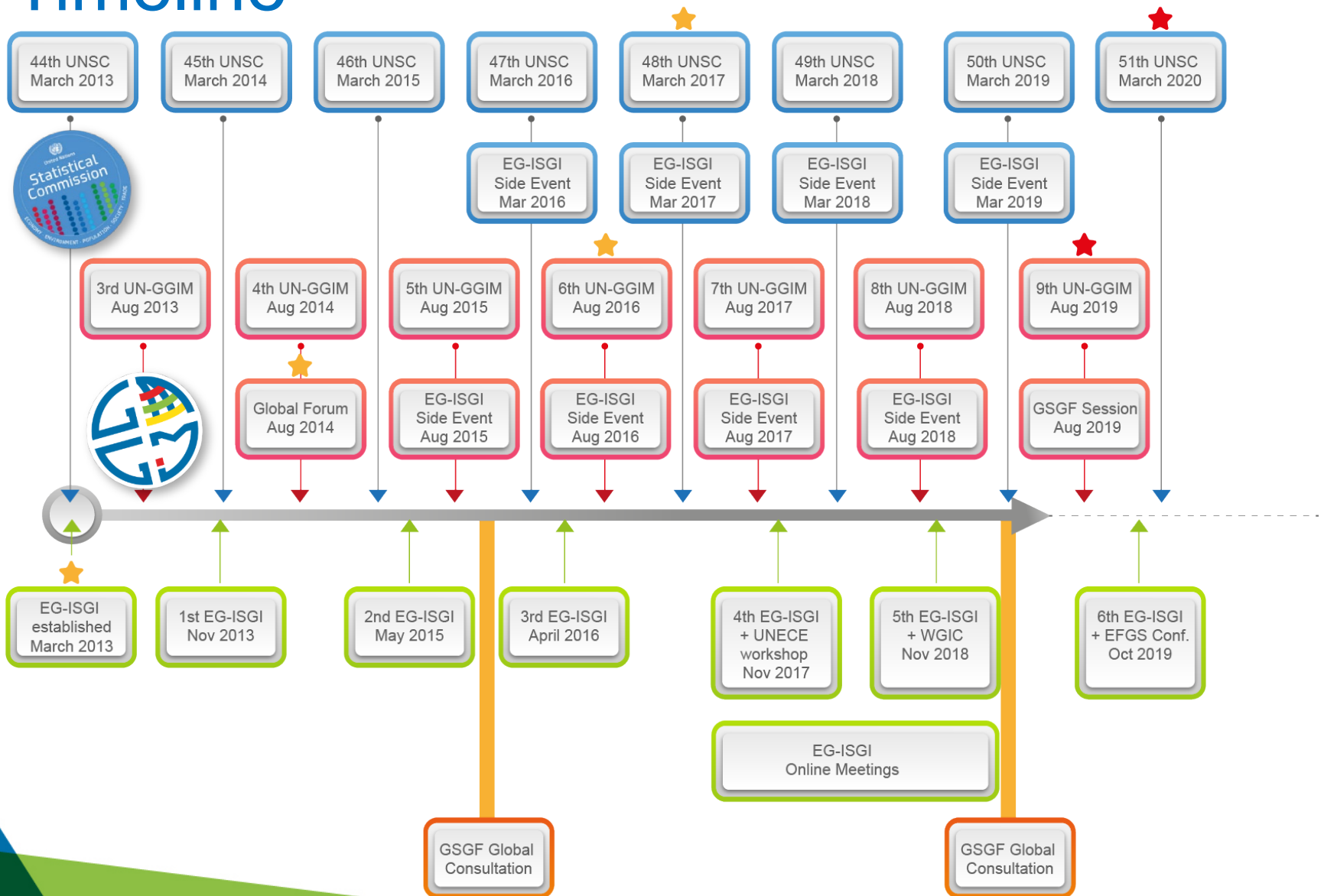
**Paloma Merodio** • INEGI, Mexico  
**Martin Brady** • ABS, Australia

# International Mandate



... both communities

# EG-ISGI & GSGF: Timeline

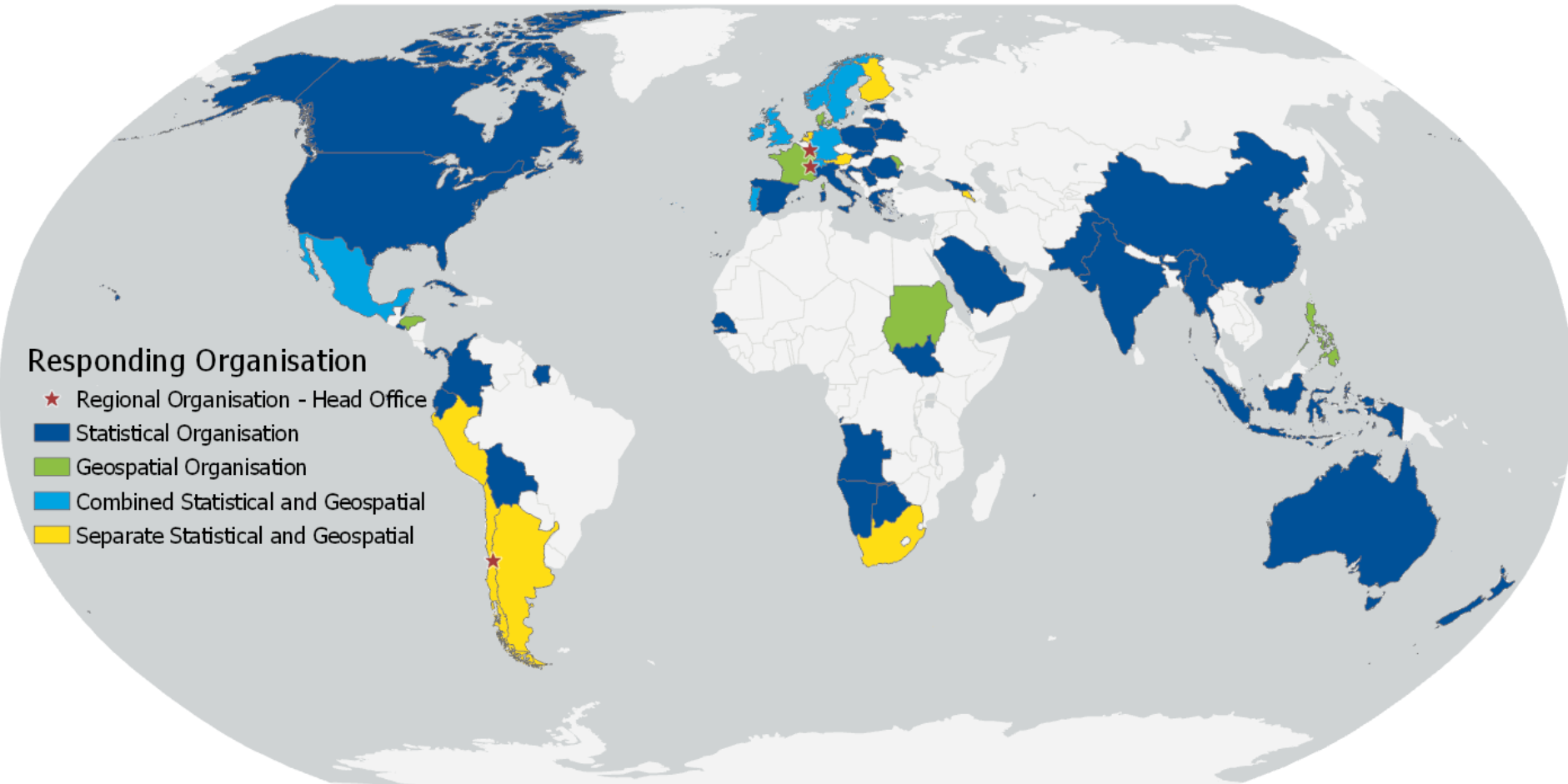


# GSGF Global Consultation



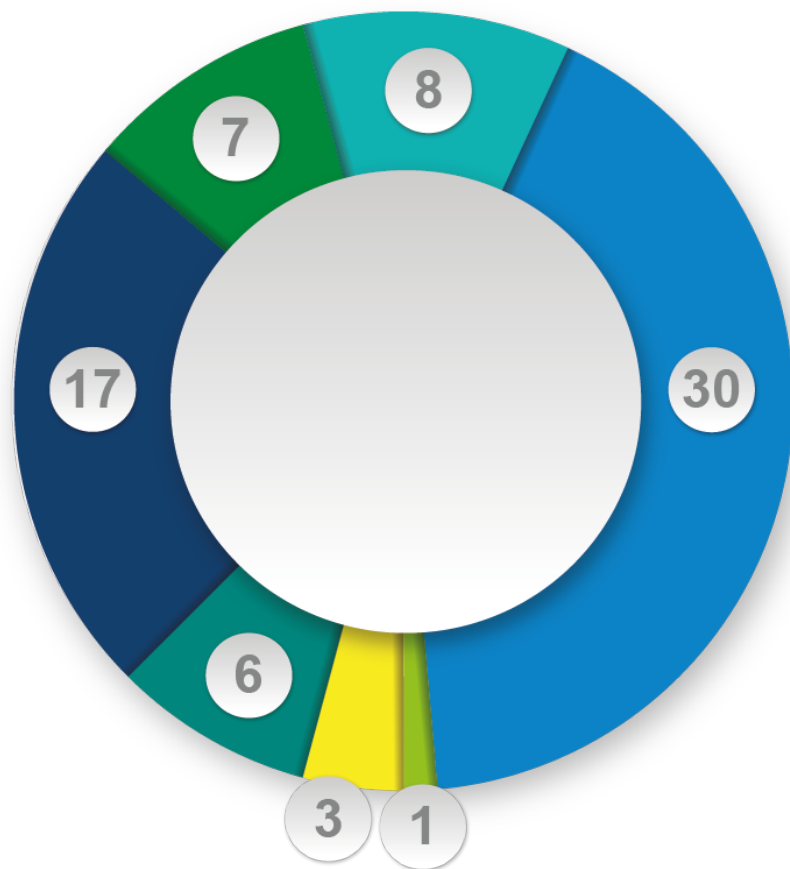
## Responding Organisation

- ★ Regional Organisation - Head Office
- Statistical Organisation
- Geospatial Organisation
- Combined Statistical and Geospatial
- Separate Statistical and Geospatial



Sources: ESRI, ArcWorld Supplement, DIVA-GIS, GIS user community. Projection: Robinson

# GSGF Consultation



- Developed Geospatial
- Developed Statistics
- Developed Statistics and Geospatial
- Developing Geospatial
- Developing Statistics
- Developing Statistics and Geospatial
- Regional Organisations



## EG-ISGI future plans



Promote and support implementation of the Framework.



Coordinate, gather, incorporate and build on the work done by other stakeholder organisations and groups to provide supporting resources to assist implementation.



Showcase country and regional implementations and encourage collaboration to build capacity.



Promote and support statistical-geospatial interoperability initiatives.



# EG-ISGI Meeting 2019



**European Forum for  
Geography and Statistics**  
Manchester 2019

EFGS Conference 10-11 October

# GSGF Framework document

The Global Statistical  
Geospatial Framework





# GSGF

## The challenge set



**“There is an urgent need for a mechanism, such as a global statistical-spatial framework, to facilitate consistent production and integration approaches for geo-statistical information.”**

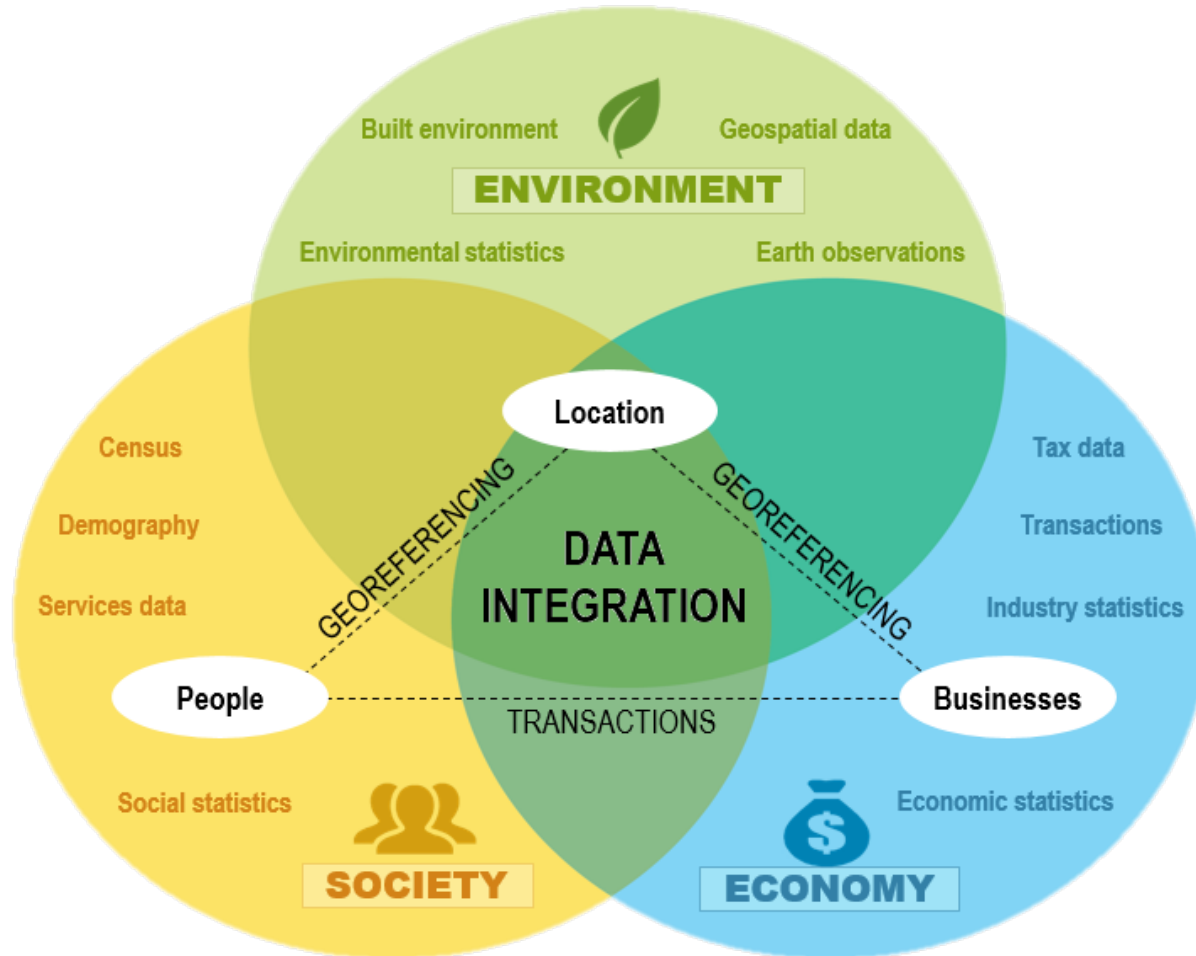
The Global Forum on the Integration of Statistical and Geospatial Information, **New York 2014**

**“... develop the Global Statistical Geospatial Framework as a common method for geospatially enabling statistical and administrative data to ensure that data from a range of sources can be integrated based on location and can be integrated with other geospatial information.”**

UN-GGIM, Committee of Experts, **New York 2015**

# GSGF

## Integrating data



# GSGF

## 5 Principles



# GSGF Full framework



## PRINCIPLES

- Accessible & usable
- Statistical and geospatial interoperability
- Common geographies for dissemination of statistics
- Geocoded unit record data in a data management environment
- Use of fundamental **geospatial infrastructure** and **geocoding**

## KEY ELEMENTS

Standards and Good Practices

National Laws and Policy

Technical Infrastructure

Institutional Collaboration

Integration

Harmonised and standardised information

Interoperability Comparability

Diffusion

Decision making

Analysis

## INPUT

Geospatial

- Fundamental data
- Supplementary data
- New data sources

Statistical

- Censuses
- Surveys
- Administrative data records
- Big data and other sources

## OUTPUT



# Principle 1

## Use of fundamental geospatial infrastructure and geocoding



Focuses on creation and use of infrastructure that enables the implementation and socialisation of the GSGF. It specifies the adoption of a common and consistent approach to place each statistical unit of a dataset in time and space, using fundamental geospatial infrastructure.

# Principle 2

## Geocoded unit record data in a data management environment



Supports the process of linking or storing high-precision geographic references to each microdata/statistical unit record – often referred to as geospatially enabling data. This must occur within a secure, standards-based data management environment. This process applies the infrastructure and fundamental data from Principle 1.

# Principle 3

## Common geographies for dissemination of statistics



Applies geography as a tool for aggregating and integrating data. It uses a common and agreed set of geographies for the display, storage, reporting, and analysis of social, economic and environmental comparisons across datasets from different sources. Principle 3 balances existing geographies with other geographic referencing systems, such as grids, as a basis for analysis.

# Principle 4

## Statistical and geospatial interoperability



Enables greater standardisation and interoperability of data which will lead to improved efficiency and simplification in the creation, discovery, integration, and use of geospatially enabled statistics and geospatial data. Principle 4 defines the preconditions for statistical and geospatial data to work as a data ecosystem.



# Principle 5

## Statistical and geospatial interoperability



Supports data custodians to release data with confidence, improve the discovery and access of geospatially enabled statistics, and to support analysis and evaluation of data in decision making. It promotes the use of standard web services and linked data methods to provide dynamic, machine-readable access to these data, with the necessary assurances regarding the integrity and appropriate protection of data.

# EG-ISGI Wiki

A screenshot of the UN Statistics Wiki page for the Global Statistical Geospatial Framework. The page has a blue header with "UN Statistics Wiki" and "Spaces" on the left, a search bar, and "Log in" on the right. A left sidebar contains the text "United Nations Expert Group on the Integration of Statistical and Geospatial Information". The main content area is divided into three columns. The first column, titled "Global Statistical Geospatial Framework", contains a bulleted list of links and a numbered list of five principles. The second column, titled "Meeting Summaries", contains a list of five meeting summaries with dates and authors. The third column, titled "Other resources", contains a bulleted list of links. Two red rounded rectangles highlight the "Global Statistical Geospatial Framework" section and the "Other resources" section.

UN Statistics Wiki Spaces Search Log in

United Nations Expert Group on the Integration of Statistical and Geospatial Information

### Global Statistical Geospatial Framework

- The Global Statistical Geospatial Framework
- GSGF: Linking Statistics and Place Report.
- GSGF: Implementation Guide
- The Five Principles of the GSGF:
  1. Use of fundamental geospatial infrastructure and geocoding;
  2. Geocoded unit record data in a data management environment;
  3. Common geographies for dissemination of statistics;
  4. Statistical and geospatial interoperability - Data, Standards and Processes; and,
  5. Accessible and usable geospatially enabled statistics.

### Meeting Summaries

- 5th EG-ISGI Meeting Deqing China 2018  
Mar 12, 2019 • attached by Mark Iliffe (UNSD)
- 4th EG-ISGI Meeting Stockholm 2017  
Oct 09, 2018 • attached by Mark Iliffe (UNSD)
- 1st EG-ISGI Meeting New York 2013.pdf  
Oct 09, 2018 • attached by Mark Iliffe (UNSD)
- 3rd EG-ISGI-Meeting-Summary-Paris 2016  
Oct 09, 2018 • attached by Mark Iliffe (UNSD)
- 13th September 2018 - Online Meeting Summary Report  
Oct 08, 2018 • created by Mark Iliffe (UNSD)

### Other resources

- EG-ISGI Terms of Reference
- EG-ISGI Work Programme
- Statistical and Geospatial Vocabularies
- Common Statistical and Geospatial Definitions
- Bibliography of Geographic Classification and Boundaries
- Statistical and Geospatial Resources

Link to wiki from <http://ggim.un.org/UNGGIM-expert-group/>

# GSGF

## Context for the future



- ▶ **The Integrated Geospatial Information Framework**
- ▶ **Digital transformation and modernisation efforts in the statistical and geospatial communities**
- ▶ **2030 Agenda for Sustainable Development and SDG Indicators**
- ▶ **2020 round of population and housing censuses**

# GSGF

## More than just data



### PRINCIPLES

- Accessible & usable
- Statistical and geospatial interoperability
- Common geographies for dissemination of statistics
- Geocoded unit record data in a data management environment
- Use of fundamental **geospatial infrastructure** and **geocoding**

### KEY ELEMENTS

Standards and Good Practices

National Laws and Policy

Technical Infrastructure

Institutional Collaboration

Integration

Harmonised and standardised information

Interoperability Comparability

Diffusion

Decision making

Analysis

## INPUT

Geospatial

- Fundamental data
- Supplementary data
- New data sources

Statistical

- Censuses
- Surveys
- Administrative data records
- Big data and other sources

## OUTPUT



# GSGF Framework document

The Global Statistical  
Geospatial Framework

