

Best practices in Land Administration and Management

Private Sector Network side event
New York – July 31st, 2018

Kees de Zeeuw - The Netherlands
Director Kadaster International
Co-chair UN-EG-LAM



UN-GGIM

United Nations Committee of Experts on
Global Geospatial Information Management

Expert Group on
Land Administration and Management

Positioning geospatial information to address global challenges

ggim.un.org

The Netherlands (100% coverage, surveyors and judges)



UN-GGIM

United Nations Committee of Experts on
Global Geospatial Information Management

Expert Group on
Land Administration and Management

Positioning geospatial information to address global challenges

ggim.un.org

	Total	SSA	ECA	LAC	MNA	OECD	SAS	EAP
Private plots in city registered	0.22	0.04	0.32	0.03	0.14	0.68	0.25	0.24
Private plots in city mapped	0.46	0.13	0.60	0.31	0.48	0.97	0.25	0.52
Private plots in country registered	0.22	0.04	0.32	0.03	0.14	0.68	0.13	0.24
Private plots in country mapped	0.24	0.02	0.40	0.03	0.14	0.71	0.13	0.28
No. of countries	189	47	25	32	21	31	8	25

Source: K. Deininger – World Bank (2017)

SSA – Sub-Sahara Africa

ECA – Europe and Central Asia

LAC – Latin America and the Caribbean

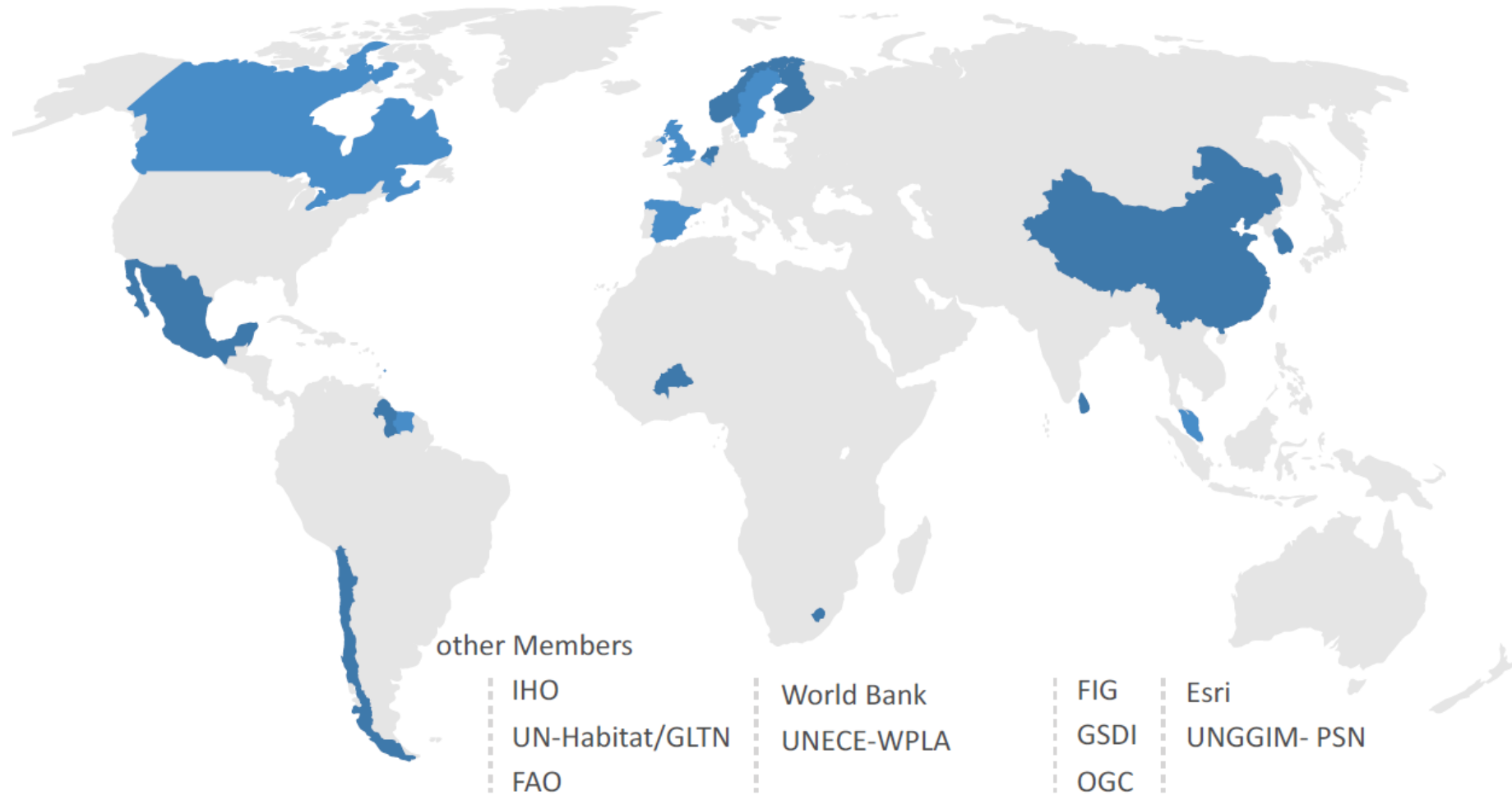
MNA – Middle East and North-Africa

SAS – South Asia

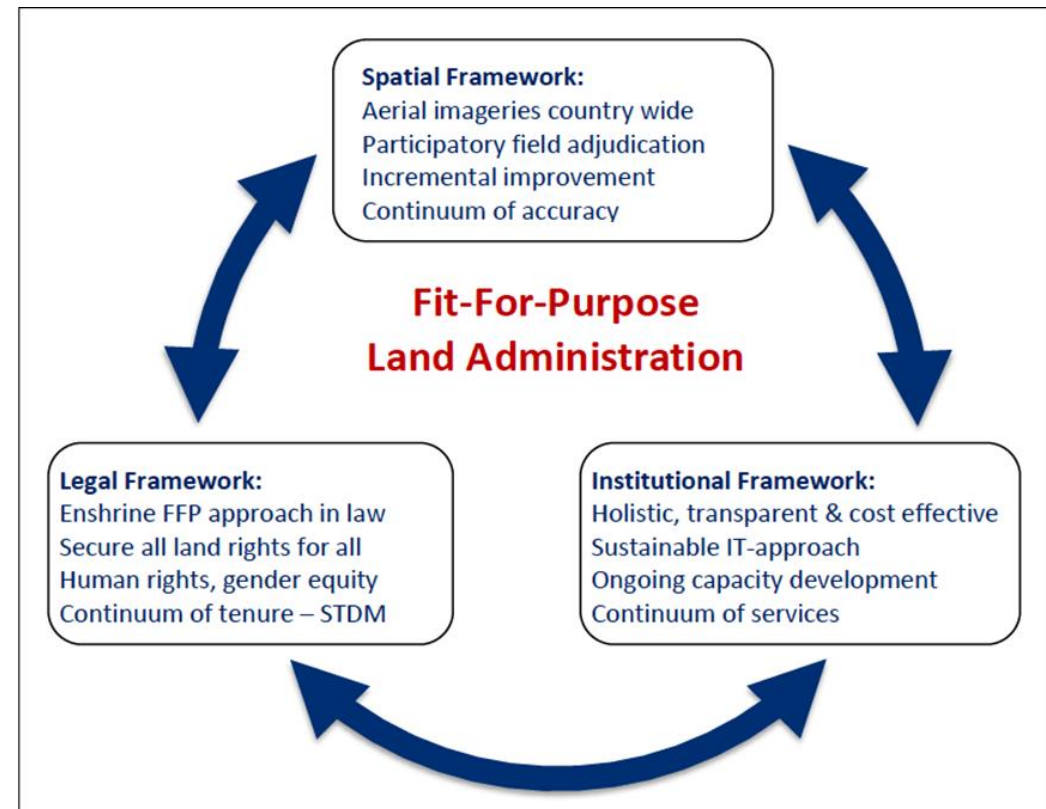
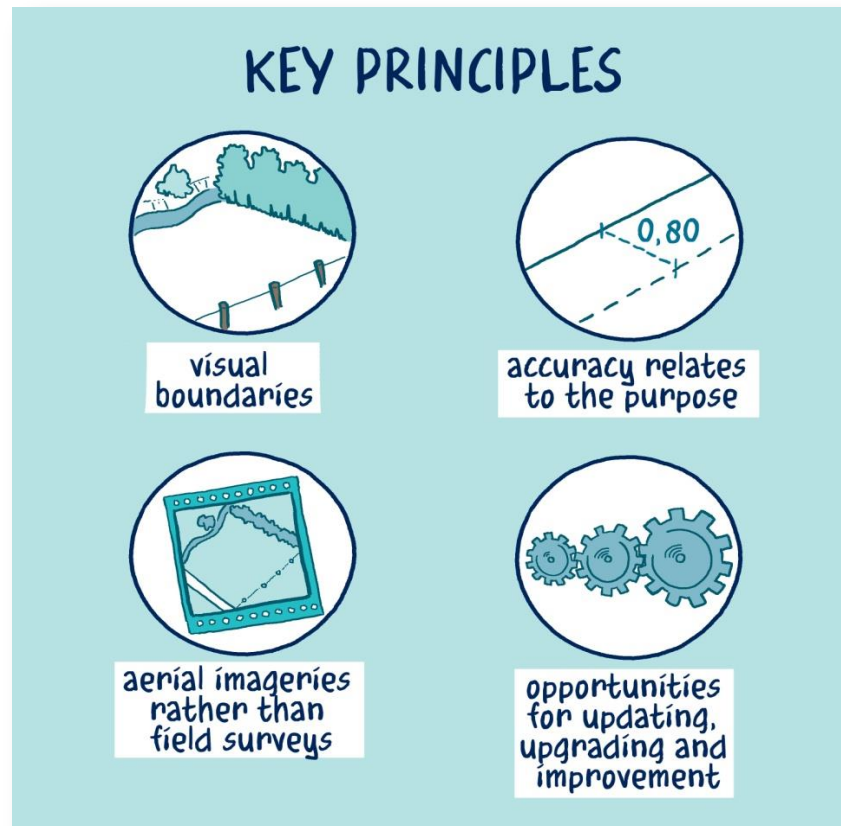
EAP – East Asia and the Pacific



UN GGIM EG-LAM: 19 Member states, 10 professional organisations



Fit for Purpose Land Administration



Best practices

Visual Boundary



Smart Device & RTK



FFP LA



Smart Device

Automatic Feature Extraction



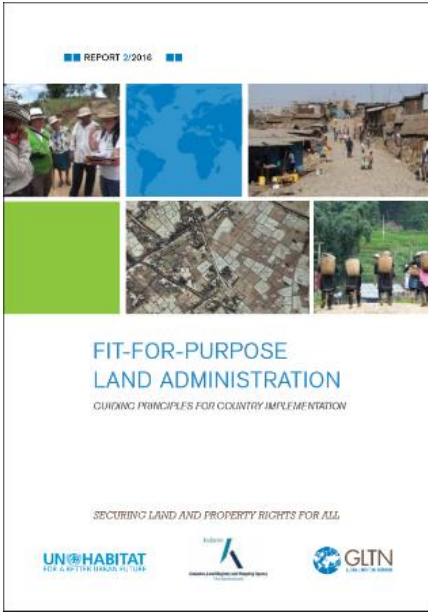
UN-GGIM

United Nations Committee of Experts on
Global Geospatial Information Management

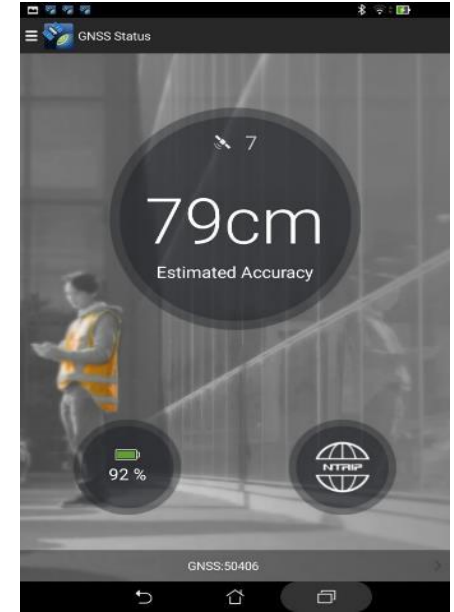
Expert Group on
Land Administration and Management

Positioning geospatial information to address global challenges

ggim.un.org



Theory ≠ Practice



Colombia (smart device + RTK)



UN-GGIM

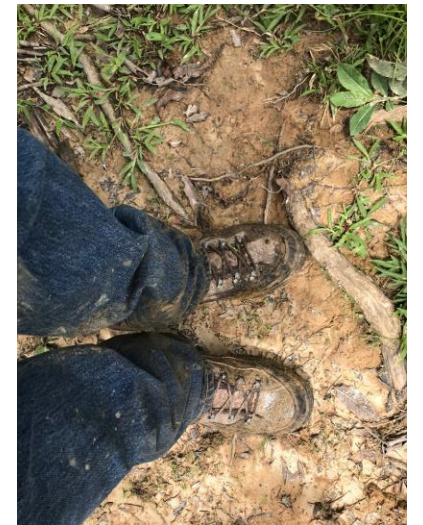
United Nations Committee of Experts on
Global Geospatial Information Management

Expert Group on
Land Administration and Management

Positioning geospatial information to address global challenges

ggim.un.org

Problems



Successes



UN-GGIM

United Nations Committee of Experts on
Global Geospatial Information Management

Expert Group on
Land Administration and Management

Positioning geospatial information to address global challenges

ggim.un.org

Mozambique (smart devices)



UN-GGIM

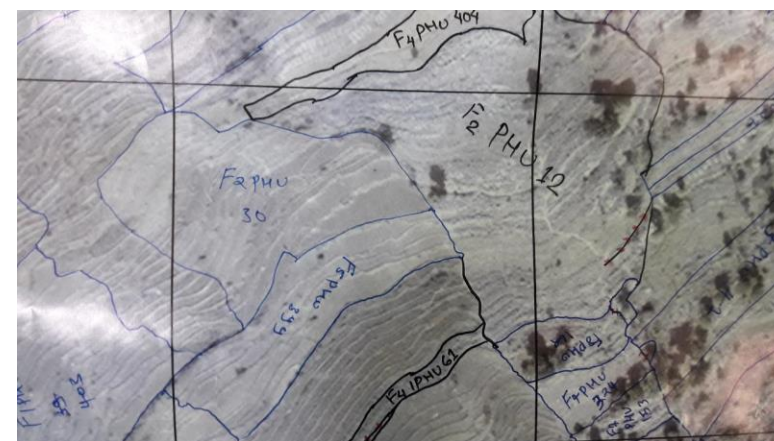
United Nations Committee of Experts on
Global Geospatial Information Management

Expert Group on
Land Administration and Management

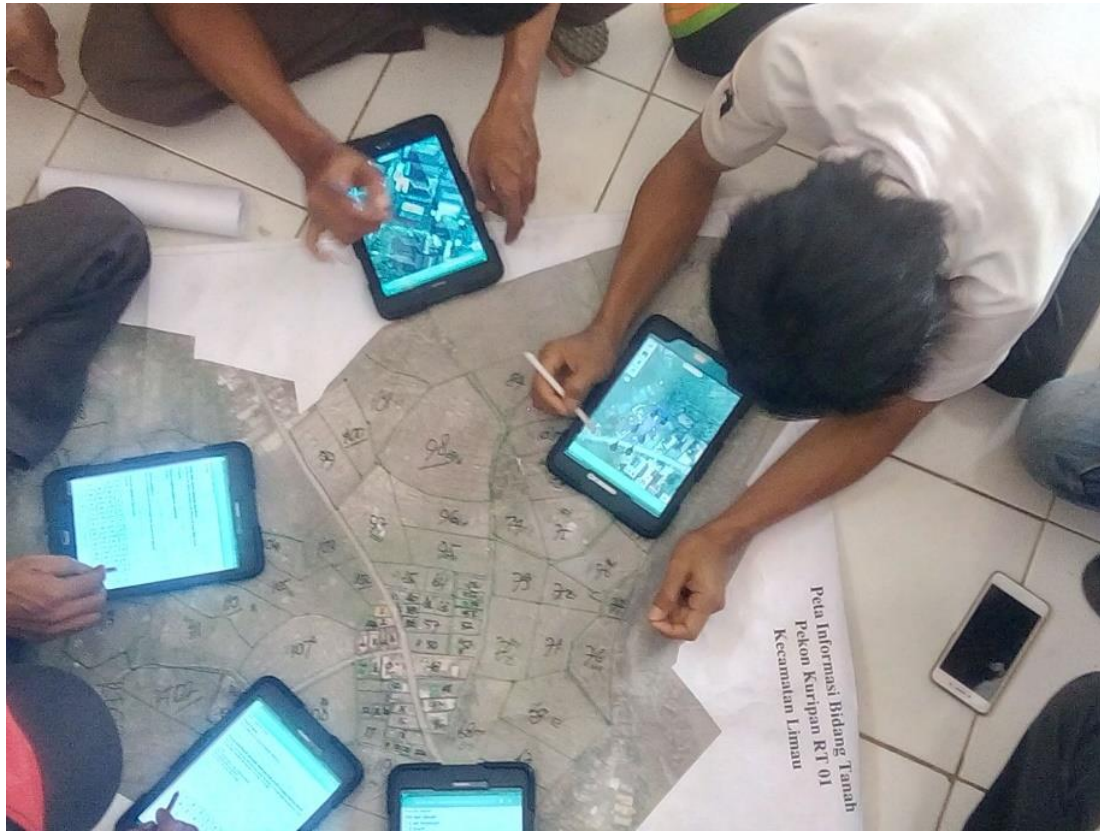
Positioning geospatial information to address global challenges

ggim.un.org

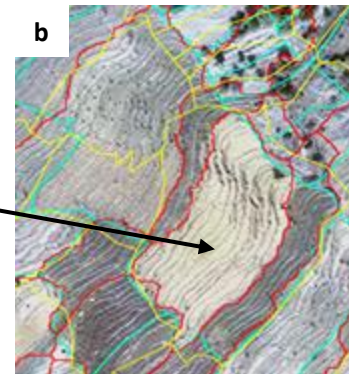
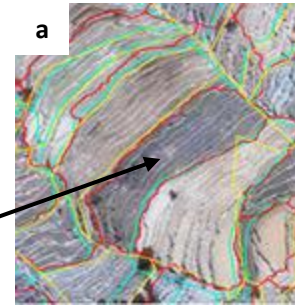
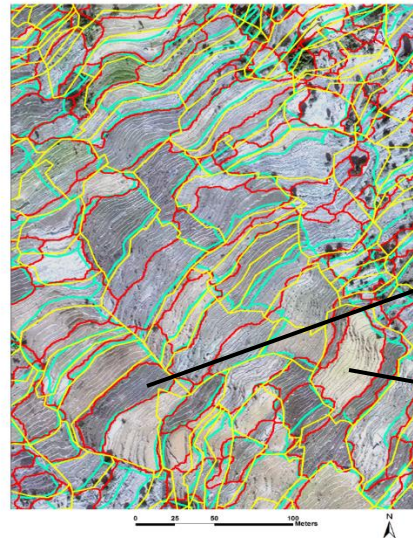
Nepal (visual boundaries)






Indonesia (participative mapping)



Nepal (Automatic feature extraction)



Borders

-  Automatic
-  Existing map
-  Field measurement (participative)



Visual Boundary



Smart Device & RTK



FFP LA



Smart Device

Automatic Feature Extraction



UN-GGIM

United Nations Committee of Experts on
Global Geospatial Information Management

Expert Group on
Land Administration and Management

Positioning geospatial information to address global challenges

ggim.un.org