

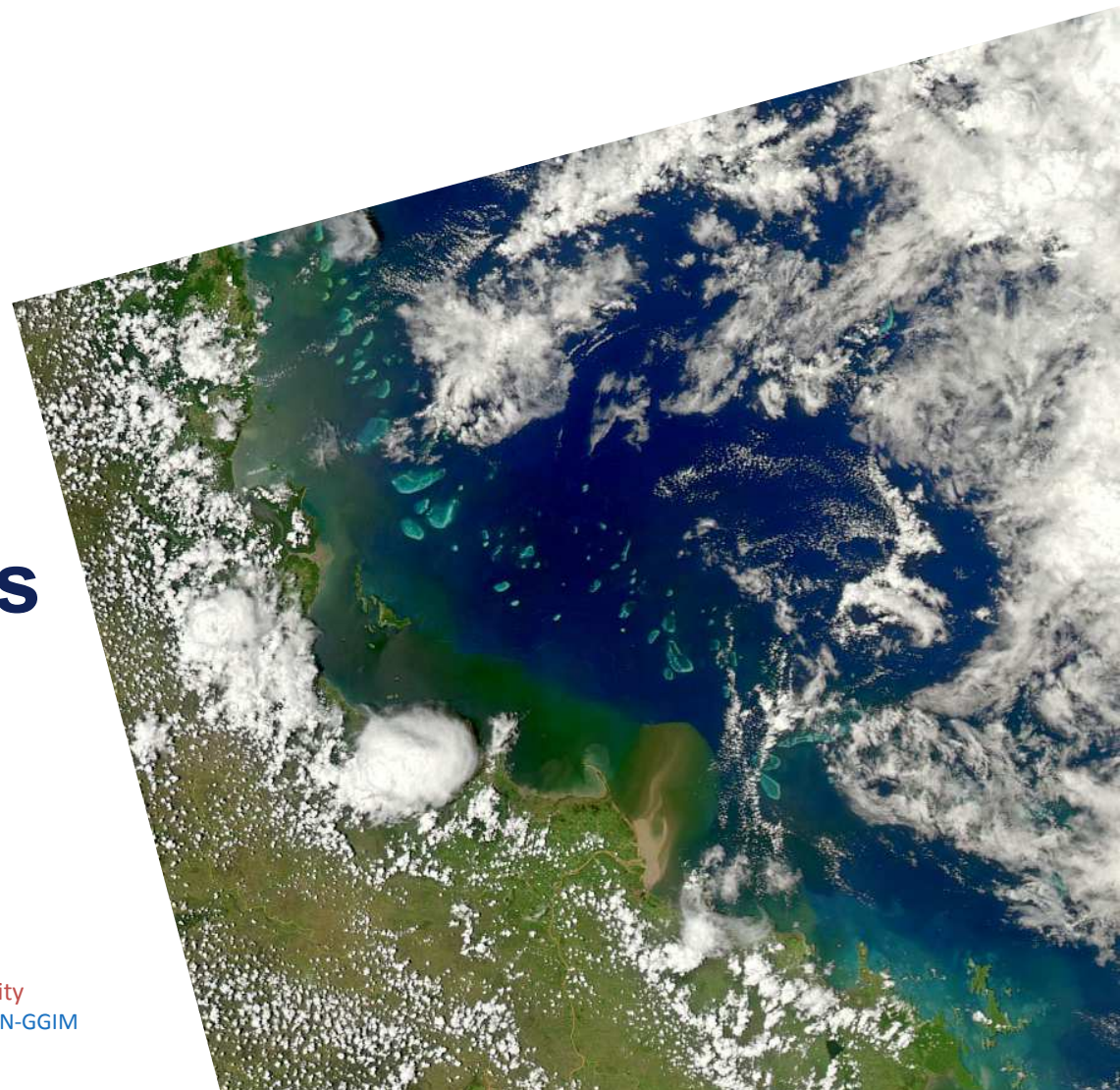


# Mapping SDG Interactions for Cities

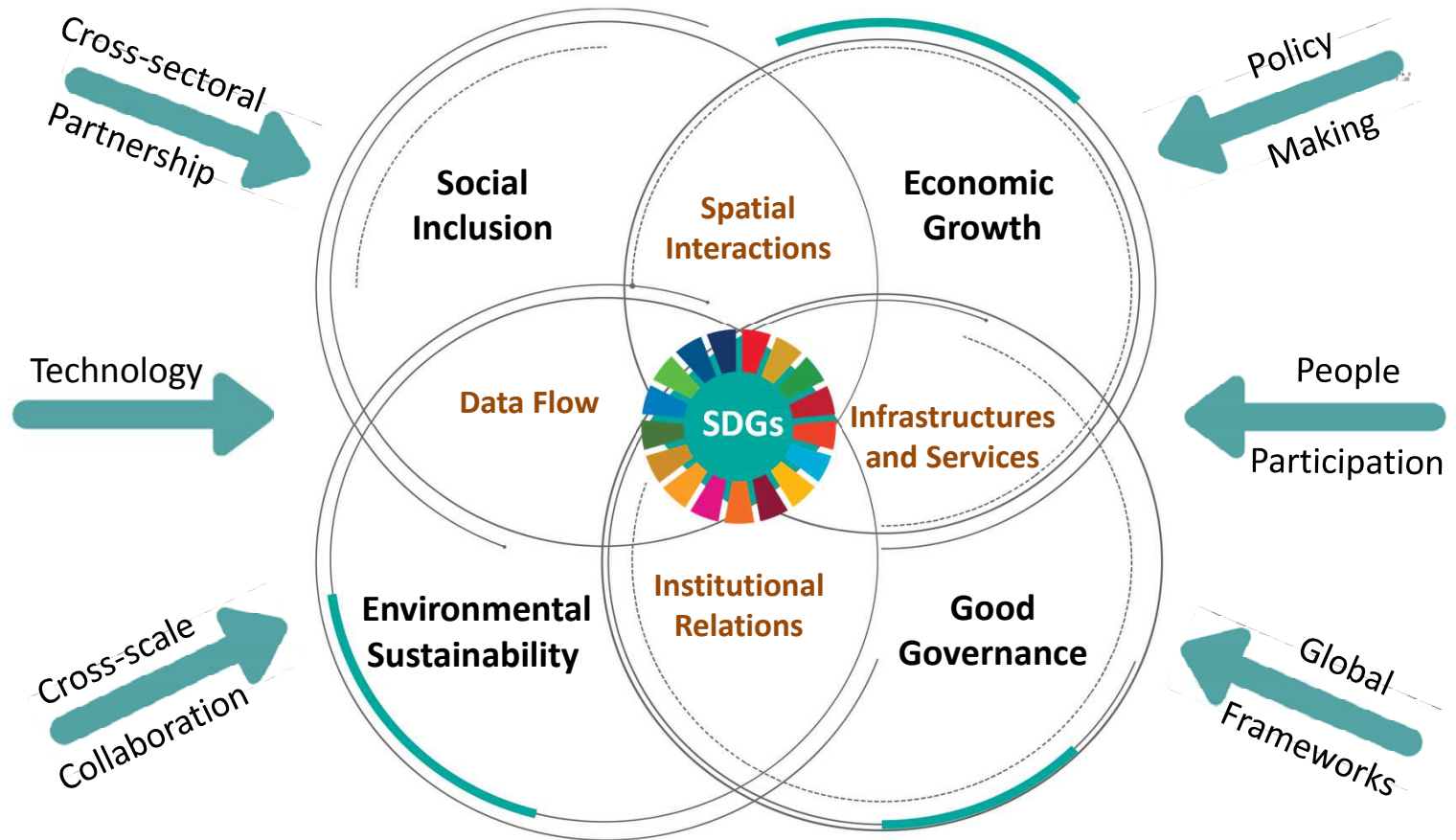
**Maryam Rabiee** | Research Associate  
Centre for SDIs and Land Administration  
Centre for Disaster Management and Public Safety

 [maryamarabiee](#)

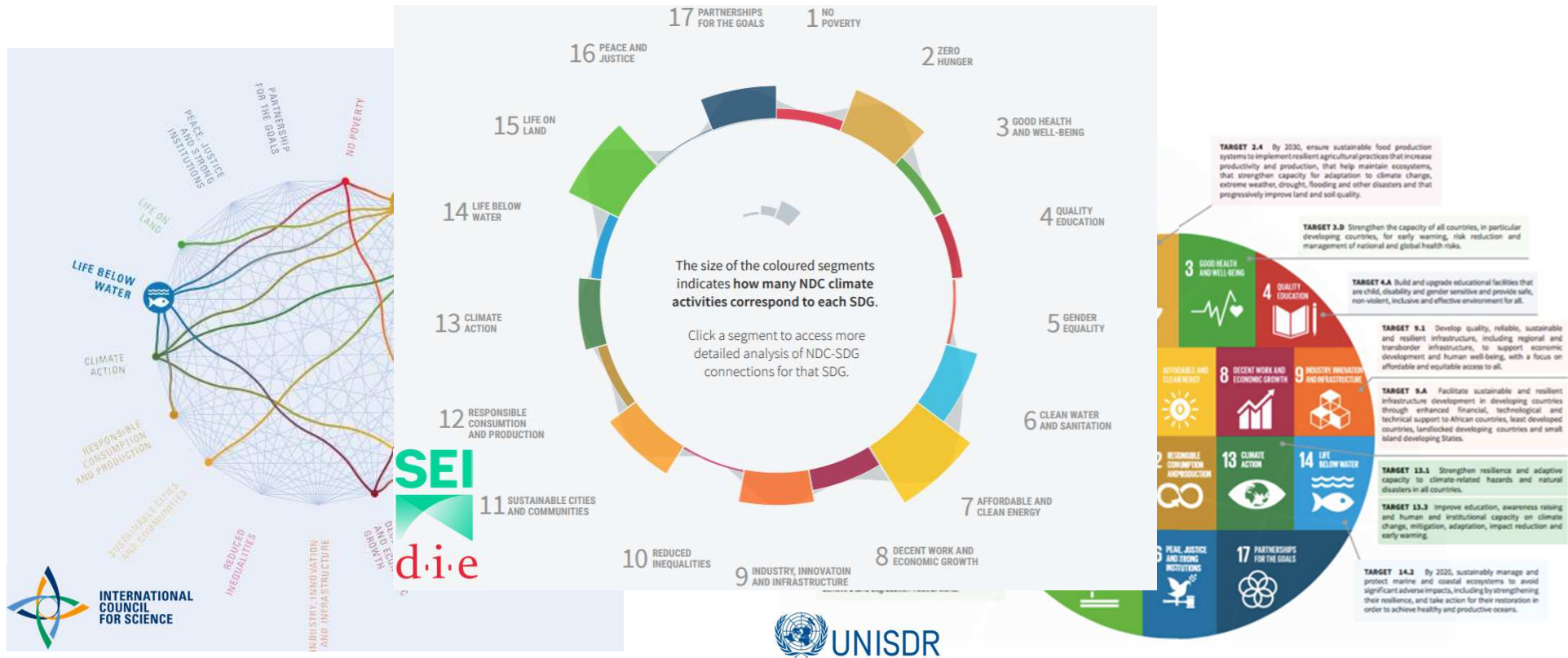
**The SDGs Connectivity Dilemma: Urban Settlements, Resilience, and Sustainability**  
UN-GGIM Academic Network Forum | Eighth Session of the Committee of Experts on UN-GGIM  
30 July 2018 | United Nations Headquarters, New York



# Epoch of Connectivity and Complexity



# Understanding SDG Interactions





# Cities and the Intensification of Challenges

- Population growth and human mobility  
60% of the entire population will live in cities by 2030. (UN-Habitat)
- Climate impact  
90% of disasters are weather-related. (UNISDR)
- Limited resources  
Resource use expected to **double** by 2050. (UNEP)
- High level of uncertainty  
Natural and human-induced shocks have **unintended consequences**.
- Contextual dependencies  
How many cities are **built/developed from scratch**?



CENTRE FOR  
DISASTER MANAGEMENT  
AND PUBLIC SAFETY



CSDILA  
THE CENTRE FOR SPATIAL  
DATA INFRASTRUCTURES  
& LAND ADMINISTRATION



# Disasters: Major Setback for Sustainable Development in Cities

Natural and human-induced disasters cost governments approximately \$300 billion globally a year. (UNISDR)



Risk exposure is highest in cities, where major economic, social, and institutional activities are centred.



# From Adaptation to Transformation

Sustainable Development



“Leave no one behind”



**Adaptation**



**Transformation**

Resilience Thinking

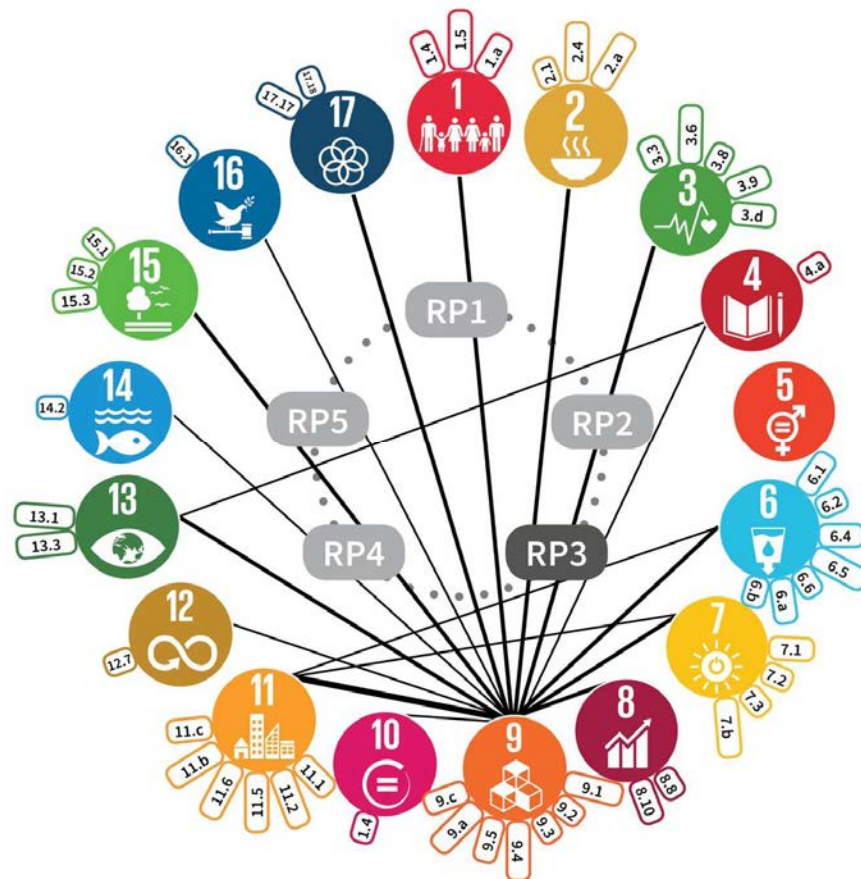


“Building back stronger”



# Whole Systems Approach to Disaster Management and the SDGs

- **RP 1:** Understanding and mitigating extreme events and critical incidents
- **RP 2:** Enabling technology, informatics and analytics
- **RP 3:** Improving whole-life infrastructure system performance and resilience
- **RP 4:** Strengthening organisational, institutional and community resilience
- **RP 5:** Enhancing policy and decision making



① Weak Connection    ② Moderate Connection    ③ Strong Connection



CENTRE FOR  
DISASTER MANAGEMENT  
AND PUBLIC SAFETY



CSDILA  
THE CENTRE FOR SPATIAL  
DATA INFRASTRUCTURES  
& LAND ADMINISTRATION

# Sustainable & Resilient Implications of SDG Interlinkages

- Strengthens rehabilitation efforts when natural or human-induced disasters occur
- Accelerates change over the short timeframe given (2030)
- Widens of the scope of impact to reach everyone everywhere
- Contextualizing the interactions contributes to efficient monitoring of progress
- Enhances synergy and cohesion in decision making processes across different sectors and scales





CENTRE FOR  
DISASTER MANAGEMENT  
AND PUBLIC SAFETY



CSDILA  
THE CENTRE FOR SPATIAL  
DATA INFRASTRUCTURES  
& LAND ADMINISTRATION

# Geospatial Data and Infrastructures Facilitate the Practical Impact of SDG Interactions



The role of **Geospatial data** is twofold:

- links the 'where' component of SDGs and make challenges in various locations more visible
- assists with spatially tracking progress



**SDIs** maximize the value of data collections processes:

- integrate spatial and statistical data
- manage data in all its complexity
- integrate with visualization to make data widely accessible, contributing to accountability, transparency, and informed decision-making
- comprehensive assessment and monitoring of sustainability projects

# The Path to a Sustainable Future is Paved by Today's Decisions



*“The patterns of urban growth today will determine **long-term sustainability**, once housing, streets and public spaces are established, it is not easy to change them.”*

World Bank. (2017). Cities of Refuge in the Middle East: Bringing an Urban Lens to the Forced Displacement Challenge.