




**CHILE LO  
HACEMOS  
TODOS**

**National System of Territorial Information Coordination - SNIT  
Infrastructure of Geospatial Data of Chile SDI-Chile  
[WWW.IDE.CL](http://WWW.IDE.CL)**

**EG LAND ADMINISTRATION MANAGEMENT**


Agosto 2018  
Macarena Pérez García  
Geógrafo

Secretaría Ejecutiva del Sistema Nacional de Coordinación de Información Territorial

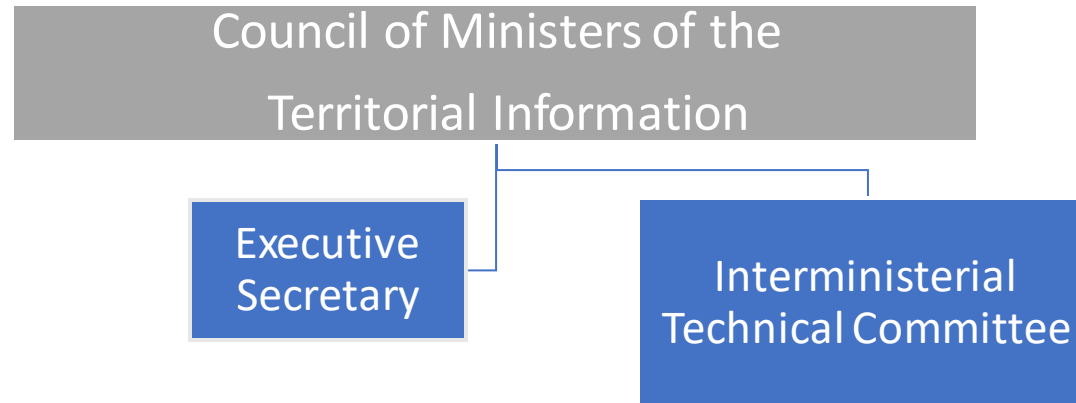


The SNIT is the **National System of Coordination of Territorial Information**. This is a permanent inter-institutional coordination mechanism for the management of public territorial information in the country, composed of the State institutions generating and using this information. It was created through the D.S N ° 28/2006 of the Ministry of National Assets.

To maximize the benefits derived from the use of territorial information, it is necessary to work under the concept of a **Geospatial Data Infrastructure (SDI)**.



# Organization of the SDI of Chile



**Coordination,  
through working  
groups, thematic  
areas, regional and  
sectoral coordination**



# How do we find ourselves working in Chile?



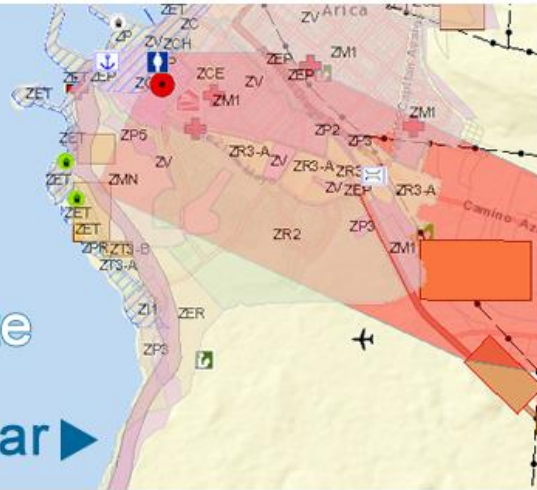
Members of the  
SDI - Chile



# Visor de Mapas IDE

Descubre,  
visualiza  
y comparte

Entrar ▶



Ministerio de Bienes Nacionales

Geoportal de Chile  
Catálogo Nacional

Geoportal de Chile  
Visor de Mapas

Descarga Información Geográfica

## Últimos Artículos

### Aumenta interoperabilidad entre IDE MINAGRI e IDE Chile.

IDE Chile

El Visor de Mapas de IDE Chile se ha conectado a 23 servicios web del Ministerio de Agricultura, destacando, entre ellos, los deslindes de predios de la mayoría de las regiones...

Ningún Comentario



## Artículos Más Leídos

### Disponible nuevo servicio de mapas de "Puntos SIRGAS IGM" en Geoportal de Chile

IDE Chile

Dentro de las iniciativas tendientes a alcanzar la interoperabilidad de la información geográfica del Estado, se ha procedido a conectar al Visor de Mapas del Geoportal de...

8 Comentarios



### IDE MINAGRI proporciona importante número de capas de información territorial

IDE Chile

El Ministerio de Agricultura, a través del Centro de Descargas de la IDE Chile, pone a disposición un número importante de capas para

### Simbología temática para información territorial

IDE Chile

Durante 2014 se llevó a cabo un trabajo de recopilación de simbologías utilizadas por diversas instituciones públicas para la representación de sus temáticas territoriales...



Otros videos de la IDE Chile

Grupos de Trabajo

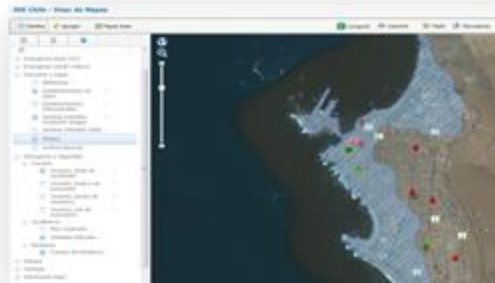
# Territorial information at the service of the country

Map Viewer



1500

Web mapping services



<http://www.geoportal.cl/visor/>

Download Center



933

Information layers and sub-metric resolution images



<http://www.ide.cl/descarga/capas.html>

Metadata Catalog



11.342

Metadata tabs  
The vast majority of institutions participate



<http://www.geoportal.cl/>

## Current Information Management and Standardization Groups

Public Infrastructure  
Pública

Cadastral

Transport

Hydrography

Heritage

Road Axes

Images

Administrative  
Policy Division

Regional  
information

Geodesy

National Standards  
Committee





***Standardize and efficiently*** manage the country's public geographic information



***Obtain specific products*** that optimize public resources and make informed decisions by the authorities and citizens in general.



***27 public agencies*** participate at central and regional level



Generate ***standards, technical recommendations*** and an annual training program involving multiple public, private and academic organizations.





# Working Groups for Territorial Information Management and Standardization

The screenshot displays the IDE Chile website's 'Grupos de Trabajo' page. It features an organizational chart titled 'Estructura organizacional IDE Chile' showing the hierarchy from the 'Comisión de Gestión de Información Territorial' down to various departments and working groups. The main content area lists the 'Grupo de Trabajo - Geodesia' with its objectives, participating institutions (including the Ministry of National Assets, Geographical Institute, etc.), and a list of participating entities. A small photograph at the bottom shows a group of people in a meeting room.

Website of SDI Chile working groups:



Objectives of each Working Group



Work plans 2018 (Goals, dates and responsible persons included)



Participating institutions

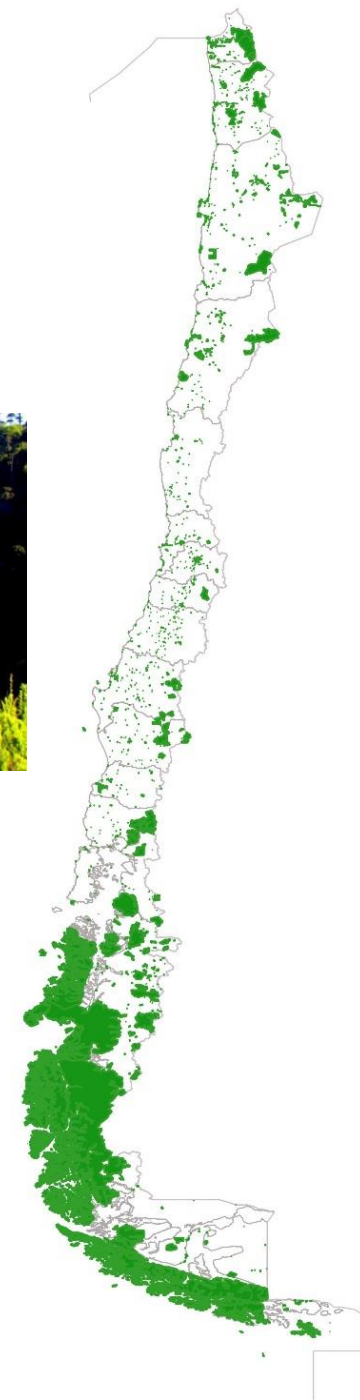


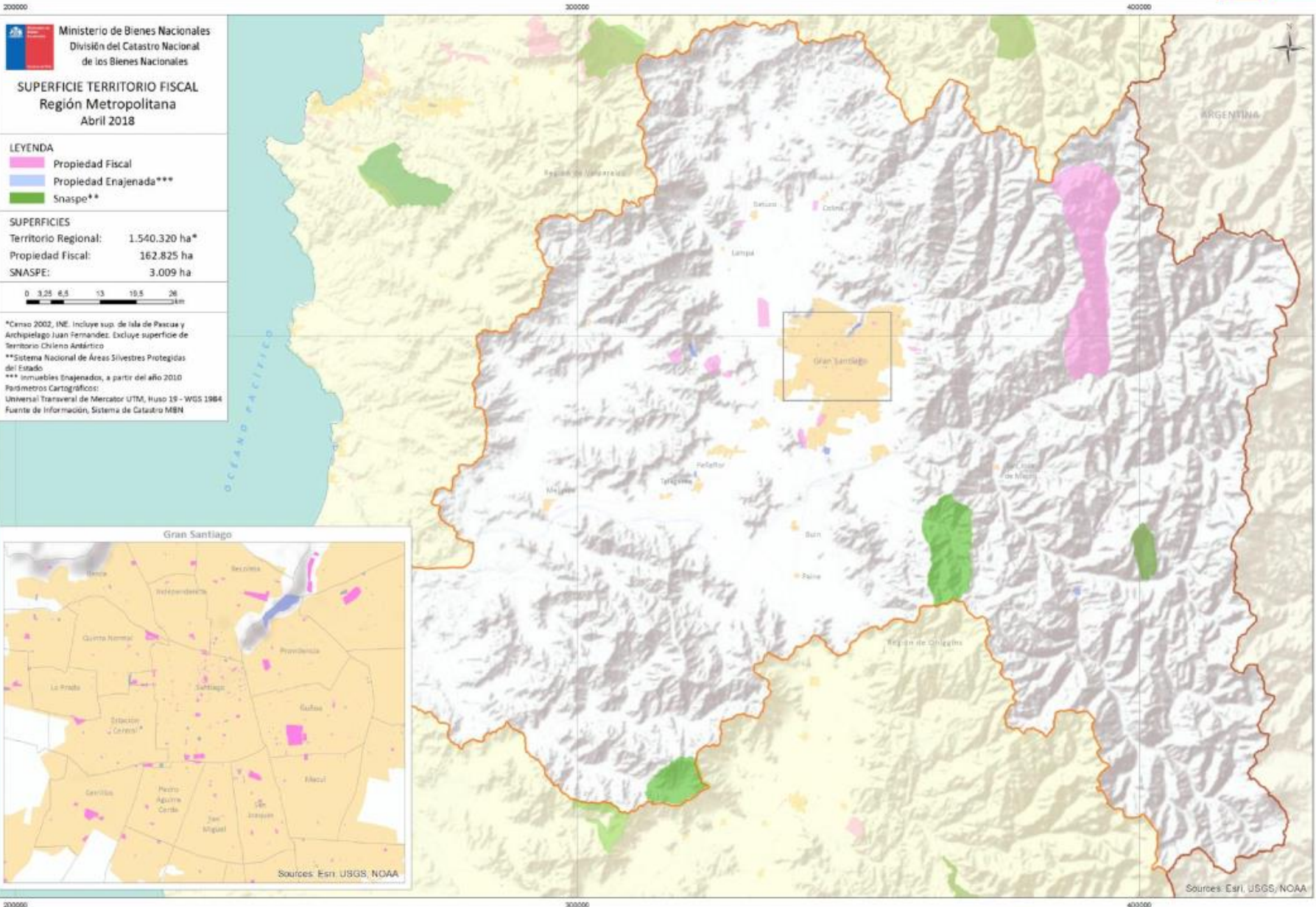
Available resources (presentations, main agreements and good practices)


<http://www.ide.cl/acerca-de/quienes-lo-componen/grupos-de-trabajo.html>

# What is the role of our Ministry in relation to the territory

- We administer 52,6 % of  
the land






**Ministerio de Bienes Nacionales**  
 División del Catastro Nacional  
 de los Bienes Nacionales

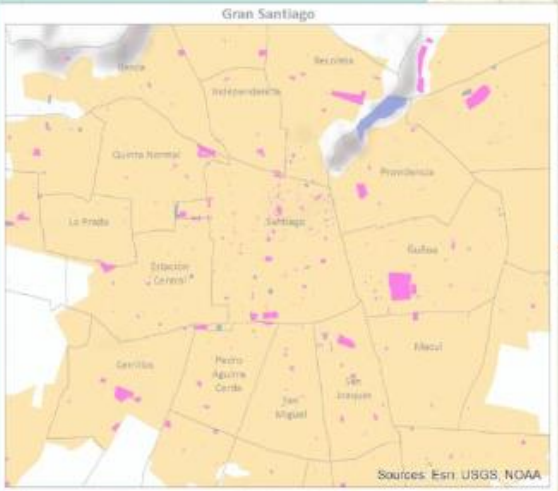
**SUPERFICIE TERRITORIO FISCAL**  
**Región Metropolitana**  
**Abril 2018**

- LEYENDA**
- Propiedad Fiscal
  - Propiedad Enajenada\*\*\*
  - Snaspe\*\*

**SUPERFICIES**  
 Territorio Regional: 1.540.320 ha\*  
 Propiedad Fiscal: 162.825 ha  
 SNASPE: 3.009 ha

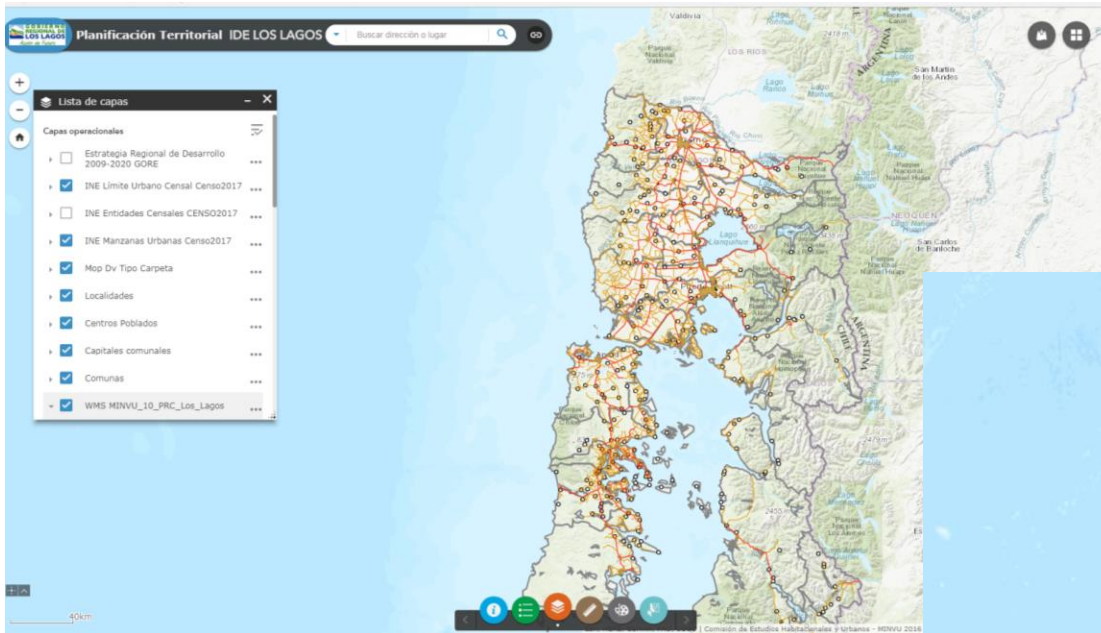


\*Censo 2002, INE. Incluye sup. de isla de Pascua y Archipiélago Juan Fernández. Excluye superficie de Territorio Chileno Antártico  
 \*\*Sistema Nacional de Áreas Silvestres Protegidas del Estado  
 \*\*\*Inmuebles Enajenados, a partir del año 2010  
 Proyección Cartográfica:  
 Universal Transversal de Mercator UTM, Huso 19 - WGS 1984  
 Fuente de Información, Sistema de Catastro MBN



Sources: Esri, USGS, NOAA








# Where we are...

- There are multiple actors that are related to the administration of the territory
- We are currently coordinating as SDI Chile public services that handle information
- There is no obligation in the delivery of information
- There must be an institutional will that gives relevance to territorial information in decision-making and long-term planning
- the information must be standardized. Interoperability must be guaranteed

## CHALLENGES

There is a long way to go, and one of the biggest challenges is the multiplicity of actors. In the Chilean case coordination is key, we are sure that despite being a complex task, the diversity of agents related to the territory generates greater wealth in the information





**CHILE LO  
HACEMOS  
TODOS**

**National System of Territorial Information Coordination - SNIT  
Infrastructure of Geospatial Data of Chile SDI-Chile  
[WWW.IDE.CL](http://WWW.IDE.CL)**

**EG LAND ADMINISTRATION MANAGEMENT**

Agosto 2018  
Macarena Pérez García  
Geógrafo

Secretaría Ejecutiva del Sistema Nacional de Coordinación de Información Territorial