

UN-GGIM-WG on Marine Geospatial Information

Promoting Established Standards in
Inland Waterways, Coastal Zones, Seas
and Oceans



UN-GGIM

United Nations Committee of Experts on
Global Geospatial Information Management

Working Group on
Marine Geospatial Information

Positioning geospatial information to address global challenges

ggim.un.org

Introduction



- Established by the Committee of Experts through UN-GGIM decision 7/111, noting the need for technical expertise and broad representation
- Provides a high level forum to encourage enhanced global cooperation to address issues related to the availability and application of marine geospatial information – including inland water bodies and waterways, coastal zones, seas and oceans



Introduction

- Play a leading role at the policy level in support of the administration, management, and governance of the marine and ocean environments
- Encourage the use of internationally agreed-upon geospatial information frameworks, schemas, systems and established standards
- Support the Committee of Experts in the development of norms, principles, guides and standards including any regional capacity development initiatives related to the marine environment



Work Plan Highlights

- Recognize Capacity Development Initiatives which may Benefit from WG Activities
- Liaise with Relevant Organizations including IHO and GGIM Regional Entities
- Recognize and endorse established standards for geospatial information in marine and inland waters
- Produce Communications Plan
- Produce Use Case Report – due in 2020



International Standards



A Guide to the Role of Standards in Geospatial Information Management

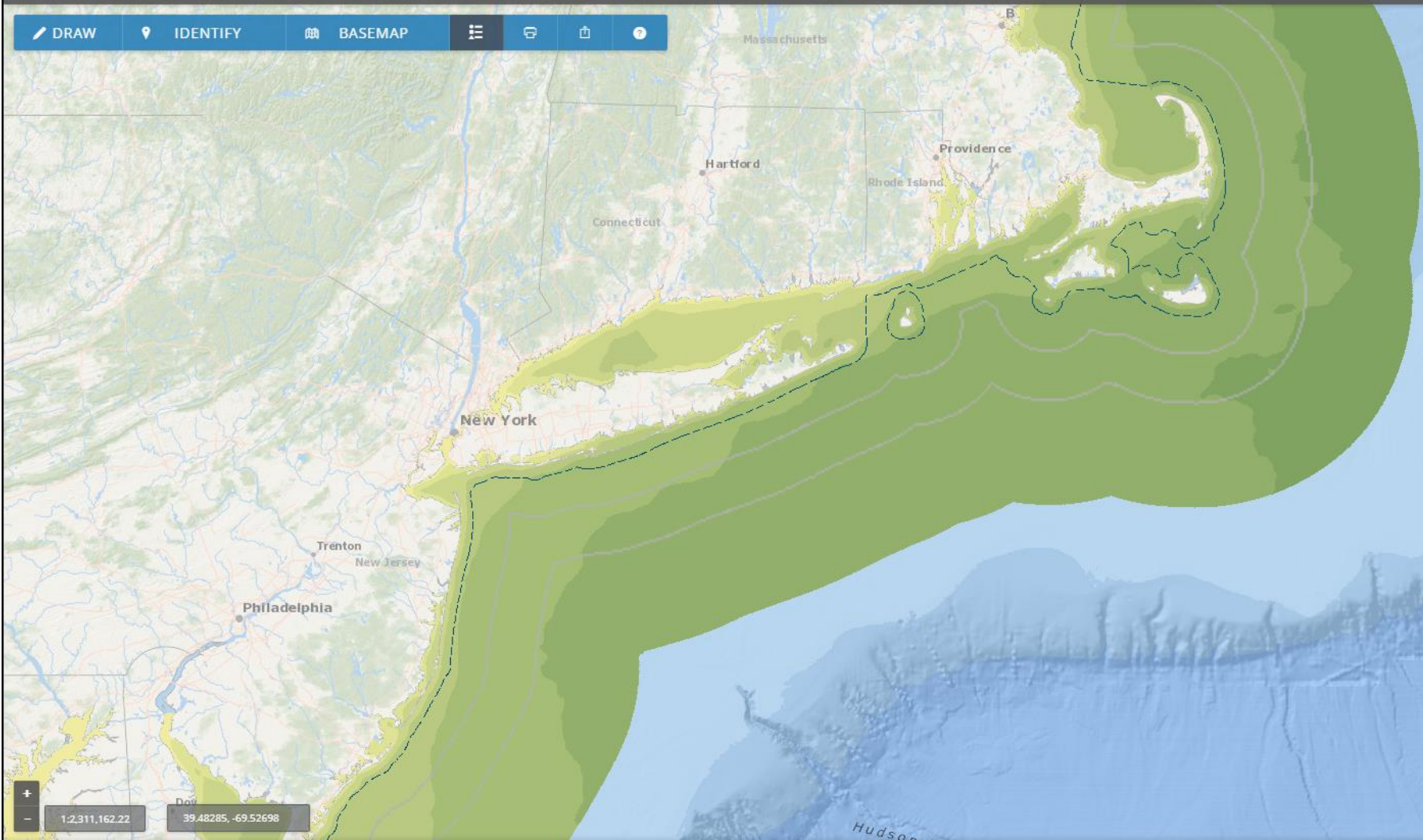
ISO/TC 211

Geographic information/Geomatics

- S-101 ENC
- S-102 Bathymetric Surface
- S-103 Sub-surface Navigation
- S-104 Water Level Information for Surface Navigation
- S-111 Surface Currents
- S-121 Maritime Limits and Boundaries**
- S-122 Marine Protected Areas
- S-123 Radio
- S-124 Navigational Warnings
- S-125 Navigational Services
- S-126 Physical Environment
- S-127 Traffic Management
- S-129 Under Keel Clearance Management (UKCM)
- S-201 Aids to Navigation Information
- S-210 Inter-VTS Exchange
- S-230 Application Specific Messages
- S-240 DGNSS Station Almanac
- S-245 eLoran ASF Data
- S-246 eLoran Station Almanac
- S-247 Differential eLoran Reference Station Almanac
- S-401 Inland ENC
- S-402 Bathymetric Inland ENC
- S-411 Ice Information
- S-412 Weather Overlay



DRAW IDENTIFY BASEMAP



Map Legend

- 12NM Territorial Sea
- Territorial Sea
- Submerged Lands Act Boundary
- 200NM EEZ and Maritime Boundaries
- US EEZ
- + Int'l Maritime Boundary
- Int'l Maritime Boundary N' EEZ
- Eastern Special Area
- Territorial Sea
- Offshore Wind Resource Potential
- Offshore Wind Resource Potential
- 0.5 - 7.0 m/s
- 7.0 - 7.5 m/s
- 7.5 - 8.0 m/s
- 8.0 - 8.5 m/s
- 8.5 - 9.0 m/s
- 9.0 - 9.5 m/s
- 9.5 - 10.0 m/s
- 10.0 + m/s



Shom catalog

Display

Data

Forecast

Services

Draw

Infonaut

User

Master data Oceanographic forecast Coastal observations

Charts

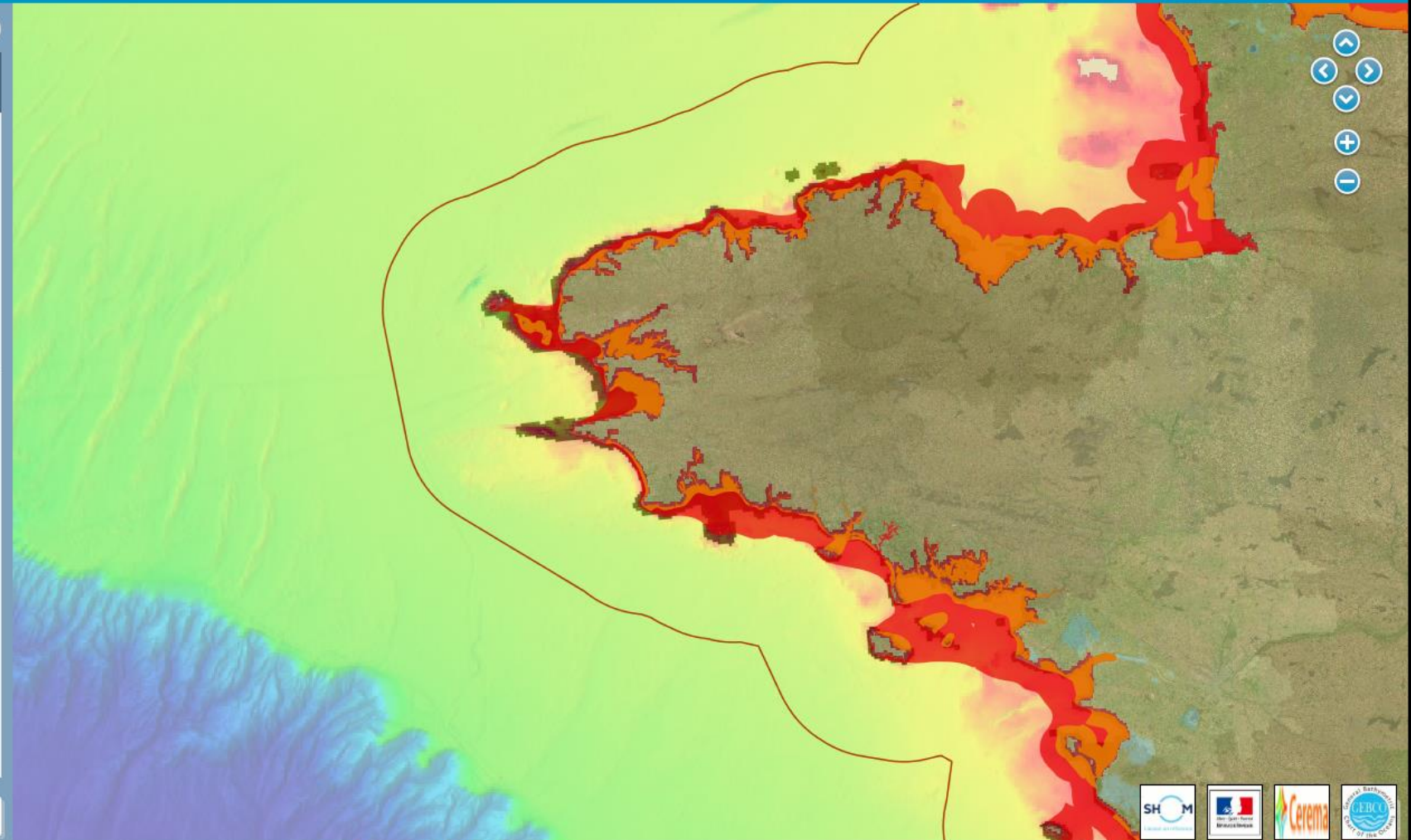
- Assemblage des cartes marines (RasterMarine) du 12/07/2018
- Carte littorale (SCAN Littoral®)
- Raster Marine 150 du 12/07/2018
- Raster Marine 1M du 12/07/2018
- Raster Marine 20 du 12/07/2018
- Raster Marine 400 du 12/07/2018
- Raster Marine 50 du 12/07/2018
- Spatiocartes marines

Maritime boundaries

- Catégories de navigation par les navires professionnels
- Classes des zones maritimes
- Délimitations maritimes
- Limites de salure des eaux
- Limites des affaires maritimes
- Limites transversales de la mer

Maritime and Coastal database

Close catalog



WGS84: 46° 21' 22.50" N, 7° 13' 04.86" W

Legal notice and warnings

Scale 1 : 1 733 376

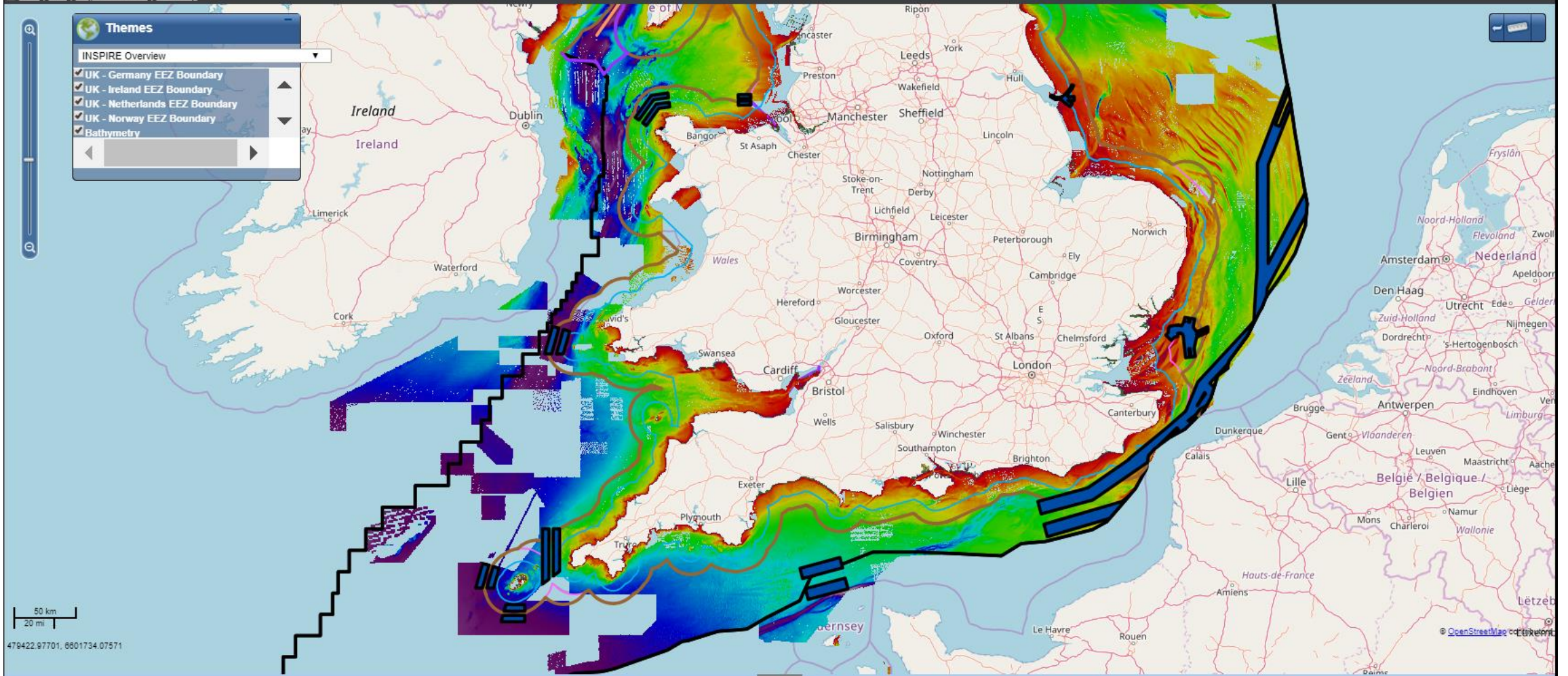


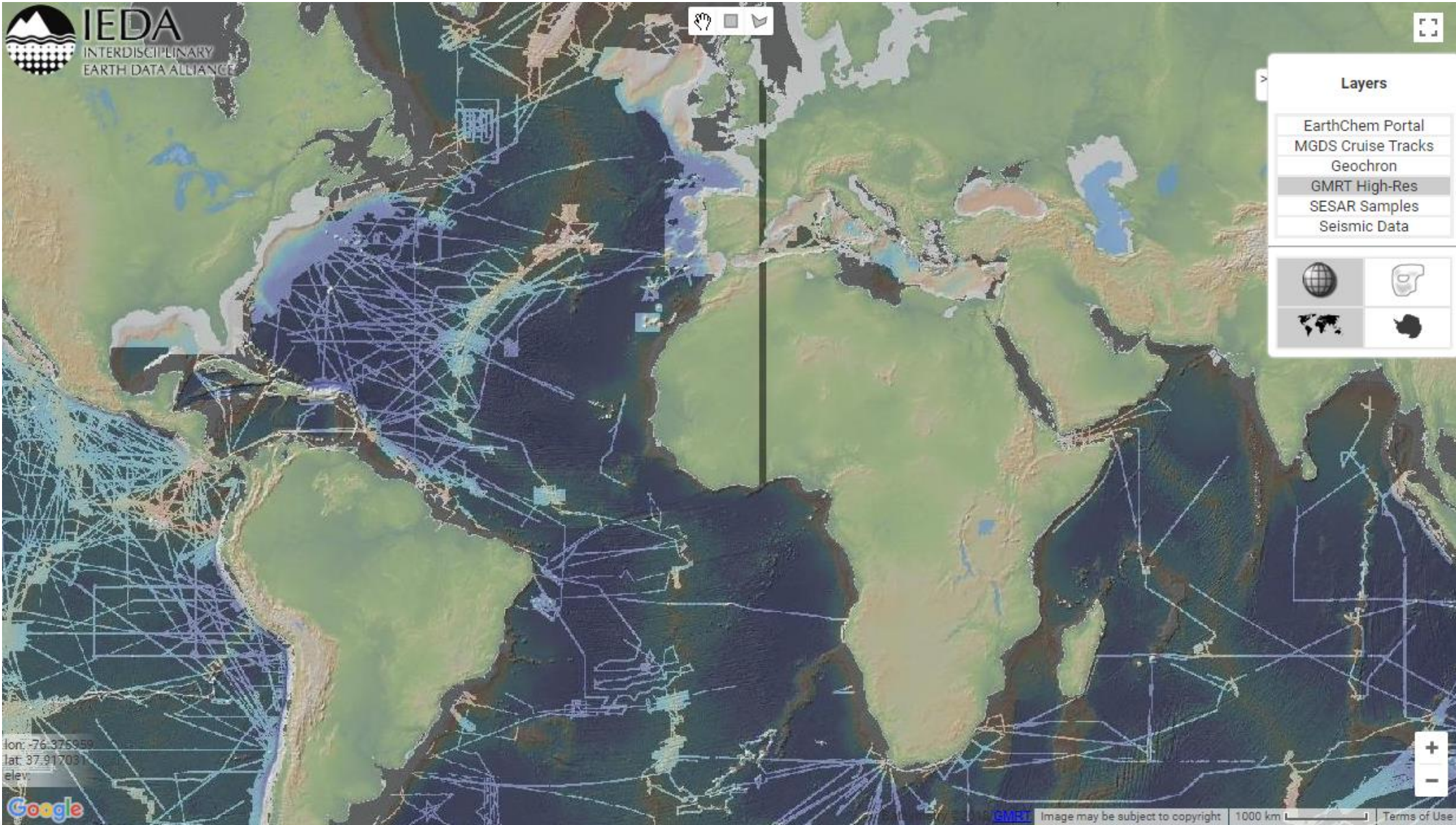


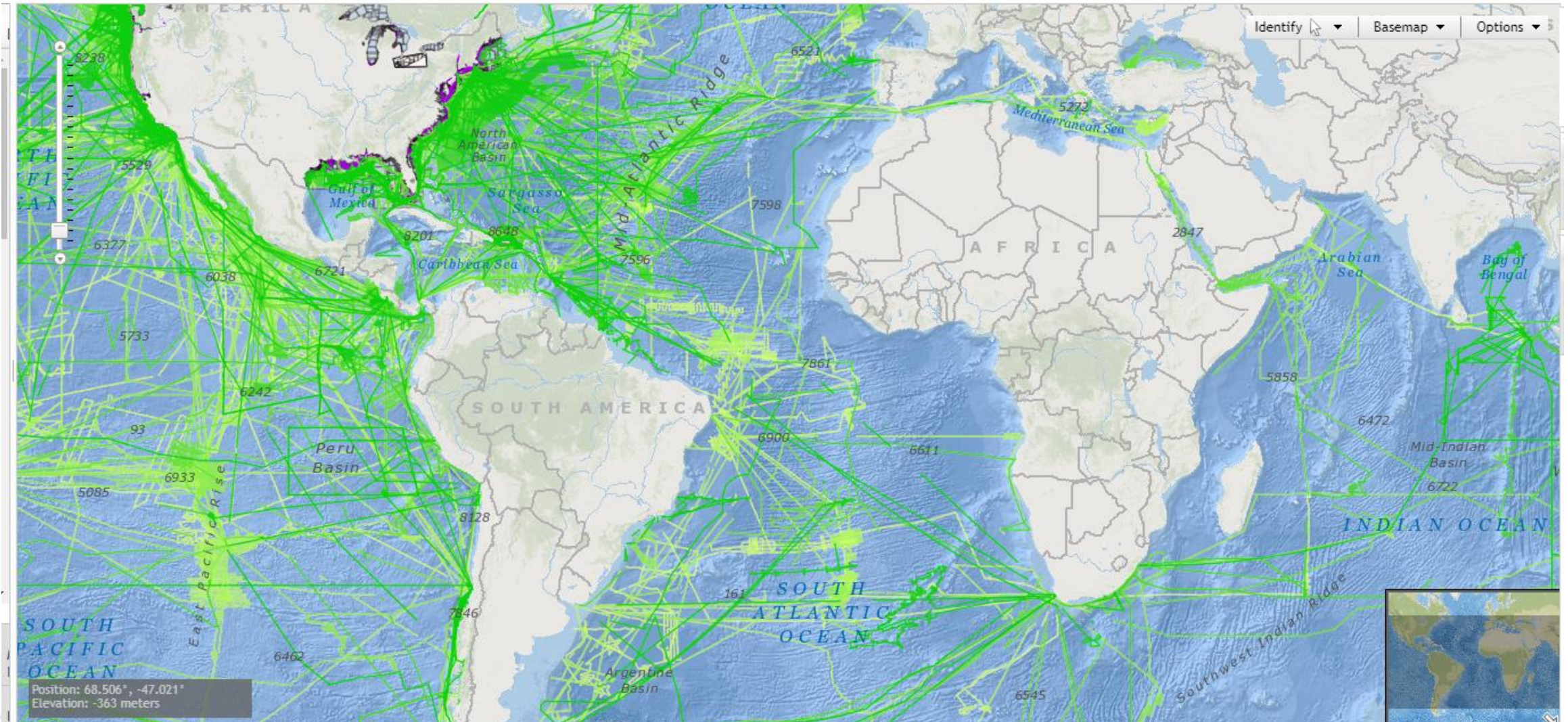
Themes

INSPIRE Overview

- UK - Germany EEZ Boundary
- UK - Ireland EEZ Boundary
- UK - Netherlands EEZ Boundary
- UK - Norway EEZ Boundary
- Bathymetry







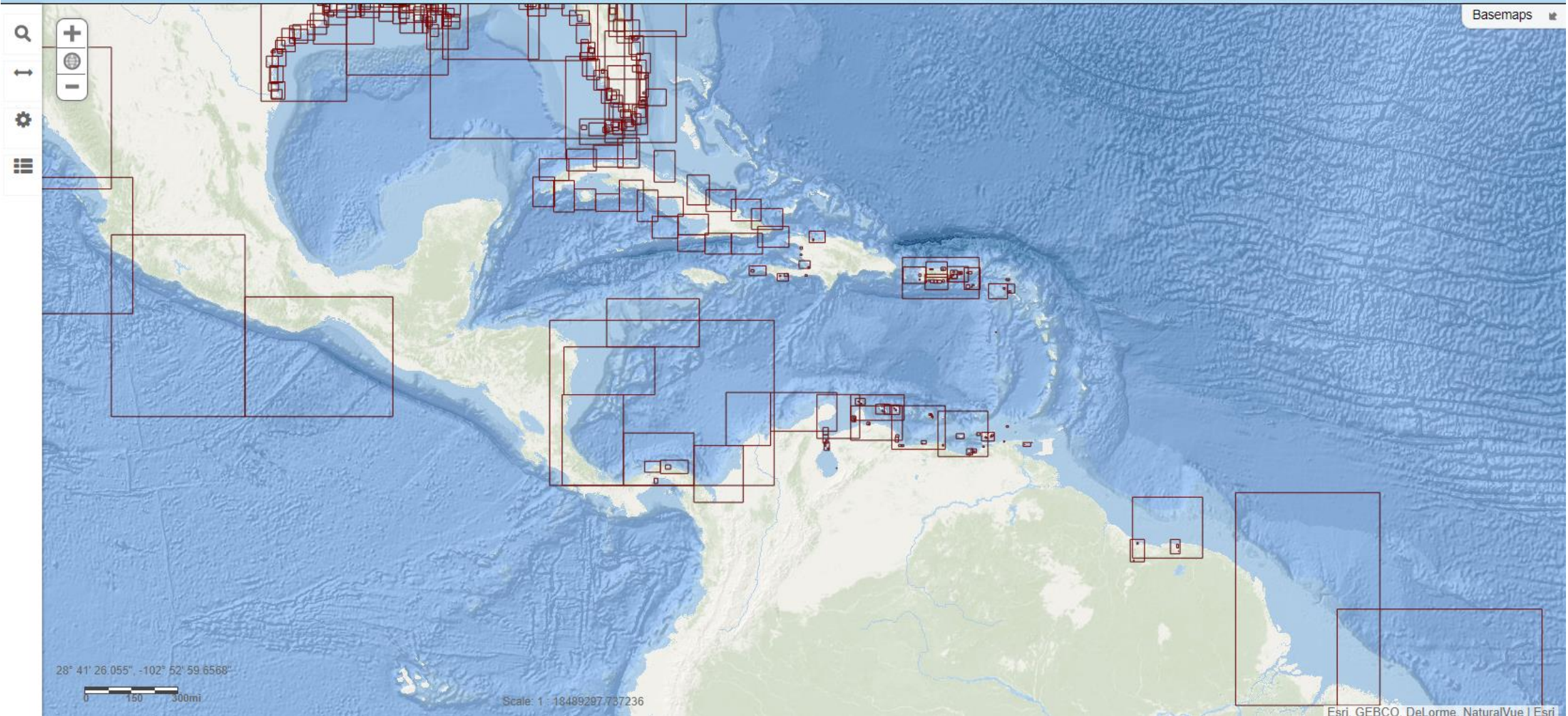
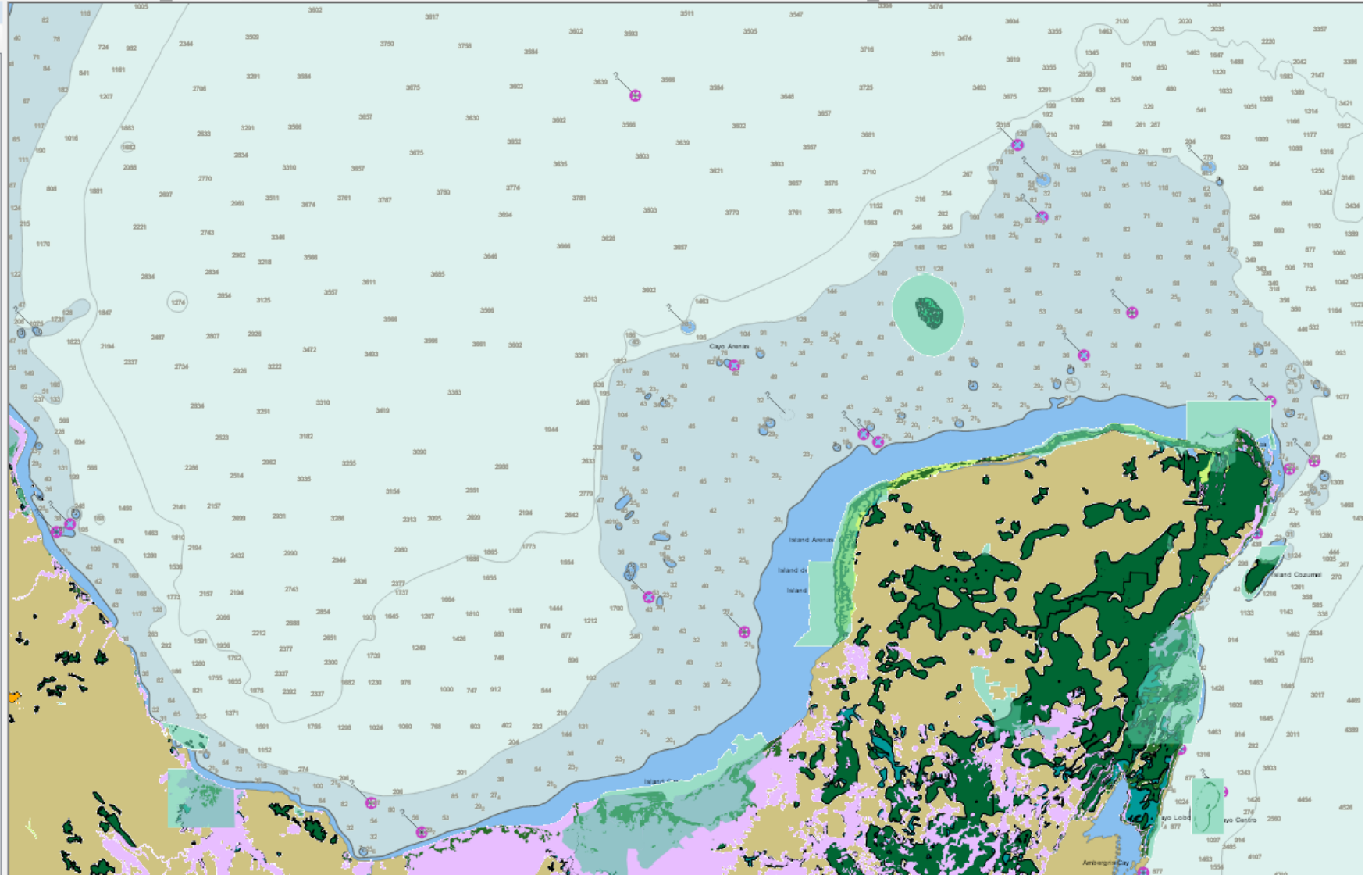


Table Of Contents



Layers

- Servicio WMS
 - Servicio WMS
 - Marco cartográfico
 - Límites de cartas escala 1:250 000
 - Límites de cartas escala 1:50 000
 - Límites de cartas escala 1:20 000
 - Límites de Ortofoto escala 1:10 000
 - Territorio Insular
 - Terrestres
 - Arrecifes
 - Oceánicos costeros
 - Catálogo de Entidades Municipios y Localidades
 - Localidades rurales dadas de baja
 - Localidades rurales vigentes
 - Percepción Remota
 - Landsat
 - Recursos Naturales
 - Sitios Ramsar
 - Uso de suelo y vegetación serie III
 - Manglares
 - Humedales Potenciales
 - Arrecifes
 - Salinas
 - Zonas pantanosa
 - Nieve perpetua
 - Fango
 - Zona de veda
 - Zona de inundación
 - Zona arenosa
 - Vegetación densa
 - Uso de suelo y vegetación serie II
 - Uso de suelo y vegetación serie I
 - Unidades geohidrológicas
 - Unidades climáticas
 - Temperatura media anual
 - Suelos
 - Subprovincias fisiográficas
 - Sistema de topoformas
 - Rocas
 - Puntos muestreador



Ooops... Error 404

We're sorry, but the page you are looking for doesn't exist.

Please check entered address and try again *or*

[go to homepage →](#)



UN-GGIM

United Nations Committee of Experts on
Global Geospatial Information Management

Working Group on
Marine Geospatial Information

Positioning geospatial information to address global challenges

ggim.un.org

Membership – Current Composition

13 Member States

2 UN-GGIM Private Sector Network Members (Esri and Ocean Wise)

The International Hydrographic Organization

Division for Ocean Affairs and the Law of the Sea, Office of Legal Affairs, United Nations

co-Chairs – Burkina Faso and United States of America



First Expert Meeting

Scheduled in conjunction with the International Hydrographic Organization's Marine Spatial Data Infrastructure Working Group

March 7 – 9, 2019
Busan, Republic of Korea



UN-GGIM

United Nations Committee of Experts on
Global Geospatial Information Management

Working Group on
Marine Geospatial Information

Positioning geospatial information to address global challenges

ggim.un.org

Thank You



UN-GGIM

United Nations Committee of Experts on
Global Geospatial Information Management

Working Group on
Marine Geospatial Information

Positioning geospatial information to address global challenges

ggim.un.org