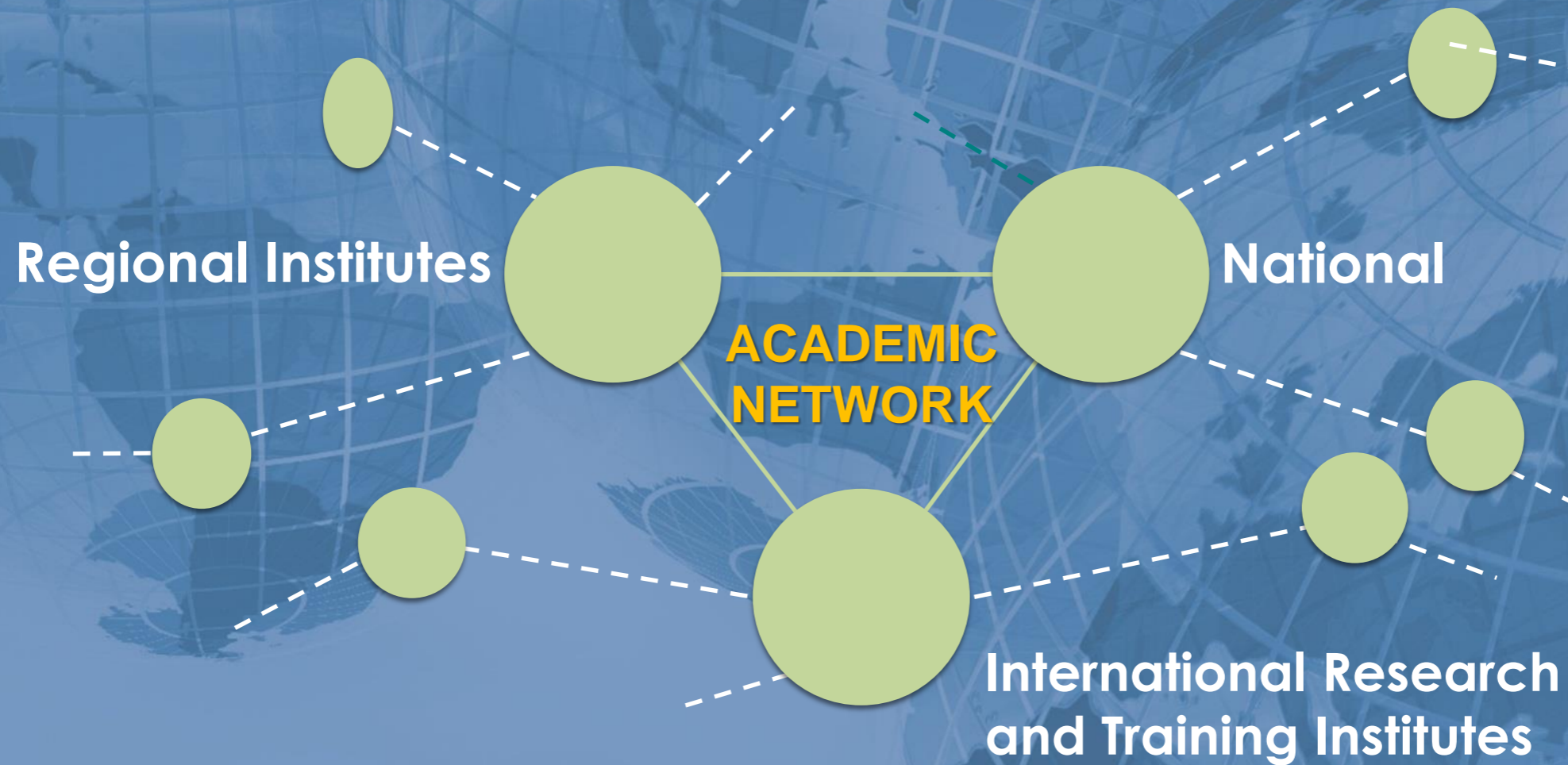




UN-GGIM
ACADEMIC NETWORK

Academic Network Report 2017-2018

Chair Professor Abbas Rajabifard



*Academic Network Report
1 August 2018, NY*



UN-GGIM
ACADEMIC NETWORK

United Nations Initiative on
Global Geospatial Information Management

unggim.academicnetwork.org

Academic Network

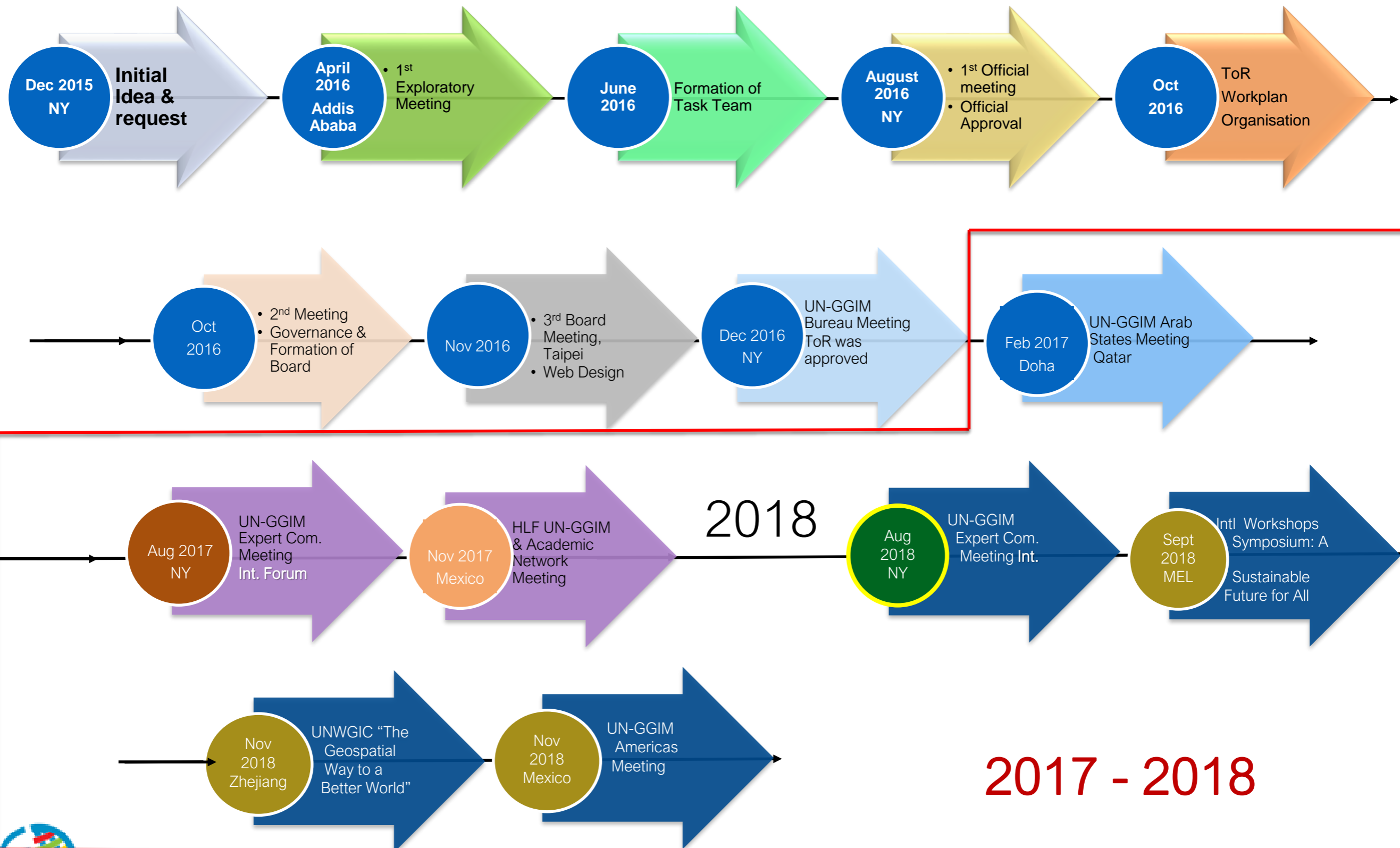
- The **Academic Network is a coalition of recognized universities, research and education centers** or equivalent involved in the research, development and training on geospatial and land information and related ma



- The **capabilities** for UN-GGIM, **its Regional Organizations, WGs** and affiliated members to identify and response to challenges and opportunities in which UN-GGIM can achieve their visions.

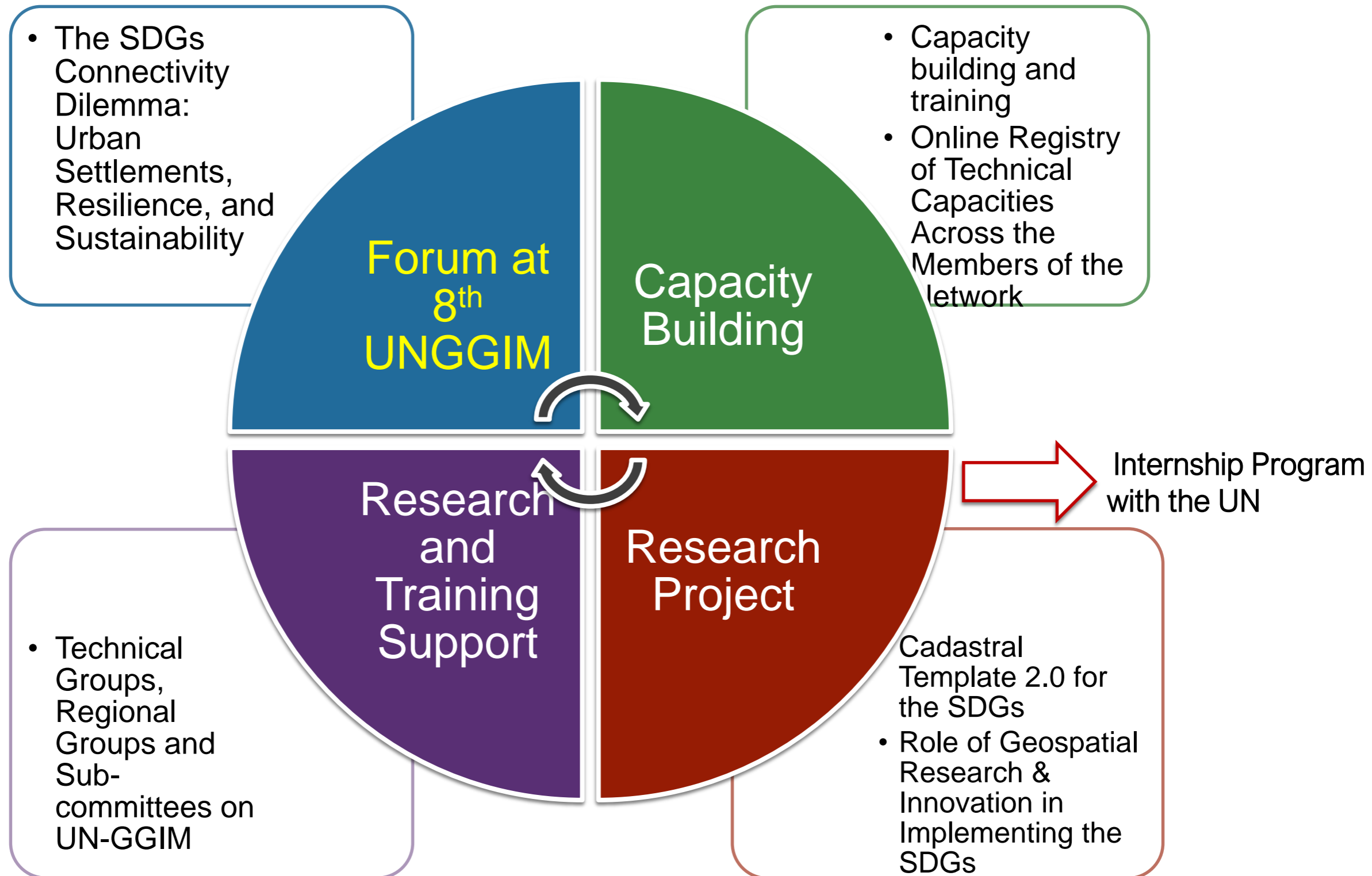


Major Activities and Steps



Academic Network

Workplan 2018-2019



Forum

Monday 30 July 2018

EIGHTH SESSION OF THE COMMITTEE OF EXPERTS ON UN-GGIM

Forum conducted by the UNGGIM Academic Network

The SDGs Connectivity Dilemma: Urban Settlements, Resilience, and Sustainability

14:00 - 18:00

Monday 30 July 2018

Conference Room 3
UN Headquarters, NY



UN-GGIM
ACADEMIC NETWORK

United Nations Initiative on
Global Geospatial Information Management

unggim.academicnetwork.org

Supporters and Contributors



UN-GGIM
UNITED NATIONS INITIATIVE ON
GLOBAL GEOSPATIAL
INFORMATION MANAGEMENT



UN-HABITAT



WORLD BANK

United Nations
Geospatial Information Section
(formerly Cartographic Section)

United Nations • Department of Economic and Social Affairs
Population Division



UN-GGIM
PRIVATE SECTOR NETWORK



**Expert Group on
Land Administration and Management
(UN-EG-LAM)**



Australian Government
Geoscience Australia



CSDILA
THE CENTRE FOR SPATIAL
DATA INFRASTRUCTURES
& LAND ADMINISTRATION



Taylor & Francis
Taylor & Francis Group



UN-GGIM
ACADEMIC NETWORK

United Nations Initiative on
Global Geospatial Information Management

unggim.academicnetwork.org

The SDGs Connectivity Dilemma: Urban Settlements, Resilience, and Sustainability

Connectivity

- Defining the responsibilities of different sectors.
- Education needs to transcend traditional boundaries of disciplines.**

Sustainability

- We have limited time to achieve the SDGs, therefore, we need **more global collaboration.**
- Developing tangible frameworks.

Resilience

- Need for more initiatives for citizens and with citizens.**
- Disaster risk reduction and minimize negative impact on city dwellers.



Take-away Messages

Data, information, and knowledge gaps

Measuring SDG indicators depend on SDI capabilities

Land Administration affect the SDGs

Complexity and Connectivity

IoT

Changes in spatial distribution

Precise positioning

Open access SDIs

Existing data is not always well connected

Tangible frameworks

Offer knowledge available to other sectors

Open Standards

From research to real-world impact

Lack of data

Capacity building

More megacities in less developed regions

Visible SDIs

Be aware of what we see and be aware of what and how to map

Increase access to information for sustainability

Models are context dependent

Shift the world to people's view

Capacity development, training, and interdisciplinary collaboration



Research Collaboration Projects

Geospatial infrastructure for measuring and monitoring the SDGs

UN Open GIS

Strategic framework for the enhancement of capacity building, the collection and sharing of geospatial data

Scenario analyses for SDGs with land use pattern projections

The Role of Geospatial Research and Innovation in Implementing the SDGs

Cadastral Template 2.0 for the SDGs

Integrated Spatial Data Infrastructure for advancing the sustainable development goals in developing societies

Earth Observation and VGI for resilience, disaster management, and damage assessment



CSDILA
THE CENTRE FOR SPATIAL DATA INFRASTRUCTURES & LAND ADMINISTRATION

High-Resolution Global Land Cover maps production, validation, and inter-comparison

GI innovation supports achieving SDGs

Role of open spatial data on implementing the SDGs at local, national, and global levels



UN-GGIM
ACADEMIC NETWORK

United Nations Initiative on
Global Geospatial Information Management

unggim.academicnetwork.org

Cadastral Template 2.0

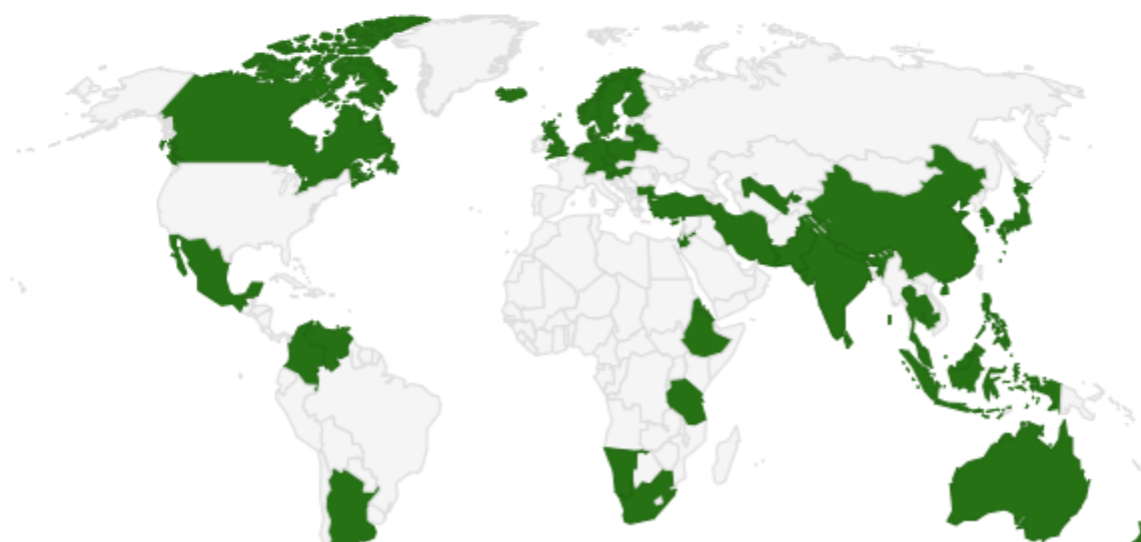
Home | Countries | Comparisons | Documents | About |

Home Page

The "Cadastral Template 2.0" has been developed by a research group at the Centre for SDIs and Land administration, Department of Infrastructure Engineering of the University of Melbourne and it was established under UN mandate by Resolution 4 of the 16th UNRCC-AP in Okinawa, Japan in July 2003. It consisted of Professor Abbas Rajabifard, Dr. Daniel Steudler, and Professor Ian Williamson, supported by Professor Stig Enemark from Aalborg University, Denmark. PCGIAP-Working Group 3 "Cadastre" cooperates with FIG-Commission 7 to place the country information jointly on this website and to maintain the information during its 2003-2006 Work Plan.

Participating countries

56 Countries



CSDILA
THE CENTRE FOR SPATIAL
DATA INFRASTRUCTURES
& LAND ADMINISTRATION



Schweizerische Eidgenossenschaft
Confédération suisse
Confederazione Svizzera
Confederaziun svizra



THE UNIVERSITY OF
MELBOURNE



GGIM
GLOBAL GEOSPATIAL
INFORMATION MANAGEMENT



CSDILA
THE CENTRE FOR SPATIAL
DATA INFRASTRUCTURES
& LAND ADMINISTRATION



Schweizerische Eidgenossenschaft
Confédération suisse
Confederazione Svizzera
Confederaziun svizra



THE UNIVERSITY OF
MELBOURNE



Origins and Characteristics

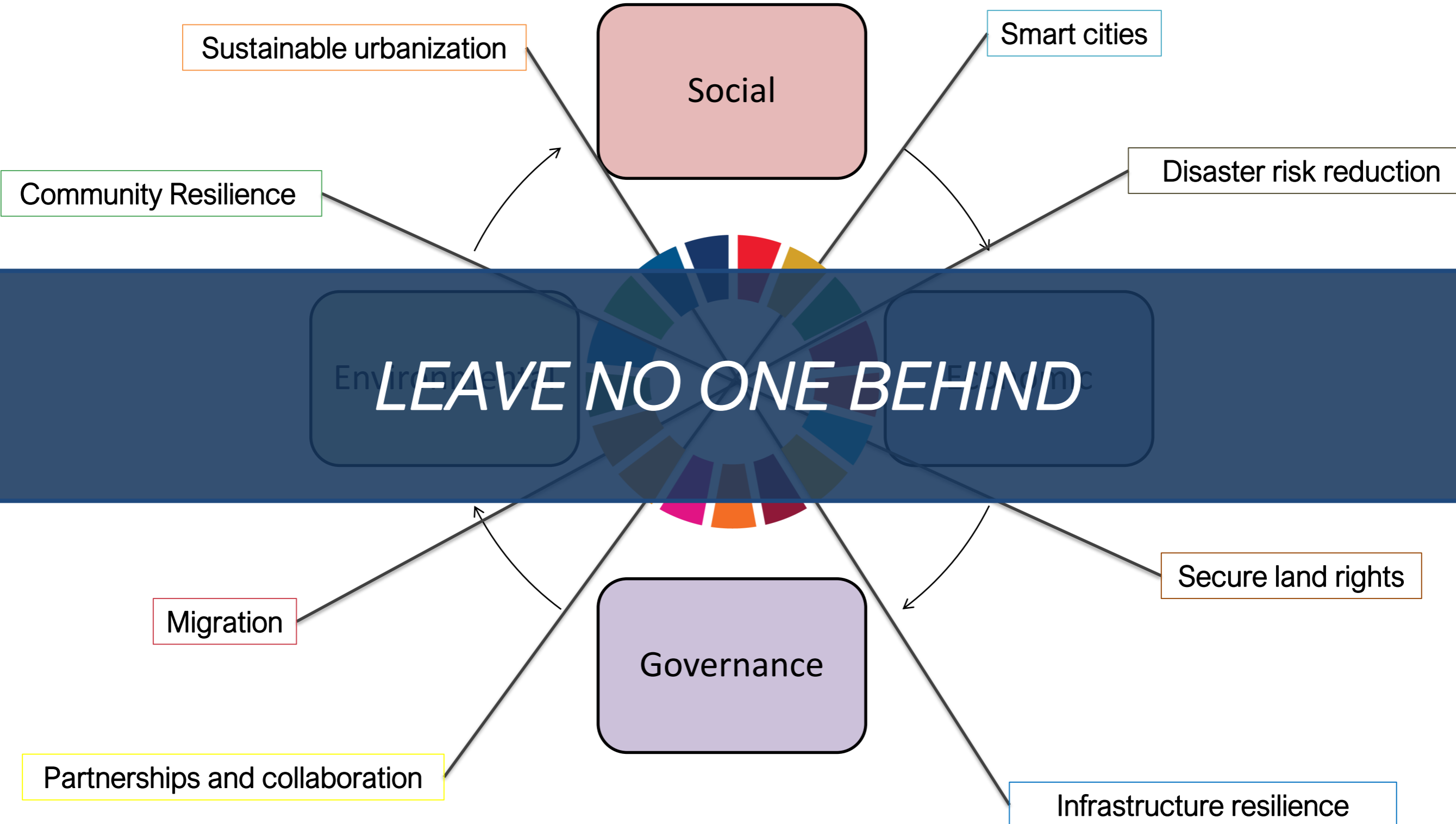
- **Developed by a research team from CSDILA, The University of Melbourne in 2003 and maintained ever since**
- Support and data from **PCGIAP/UN-GGIM-AP** and **FIG** delegates
- Regular updates mainly from **FIG-Commission 7** delegates
- content:
 - Descriptive Country Report (country context, institutional framework, description of cadastral system, cadastral mapping, reform issues)
 - Basic Indicators
- New web design and maintained in since 2012, by **CSDILA** with existing data structure.

The Way Forward

- The University of Melbourne-CSDILA will continue development and cooperation
- Close collaboration with the UN-GGIM Academic Network
- **FIG-Commission 7** continues its support by providing annual updates through their delegates (the cadastral template data collection remains as a standing item in the work plan).
- **Planned extension in order to accommodate indicators for **SDGs****



Interlinked Nature of Challenges



A **Blueprint** for Disaster Management RD&D

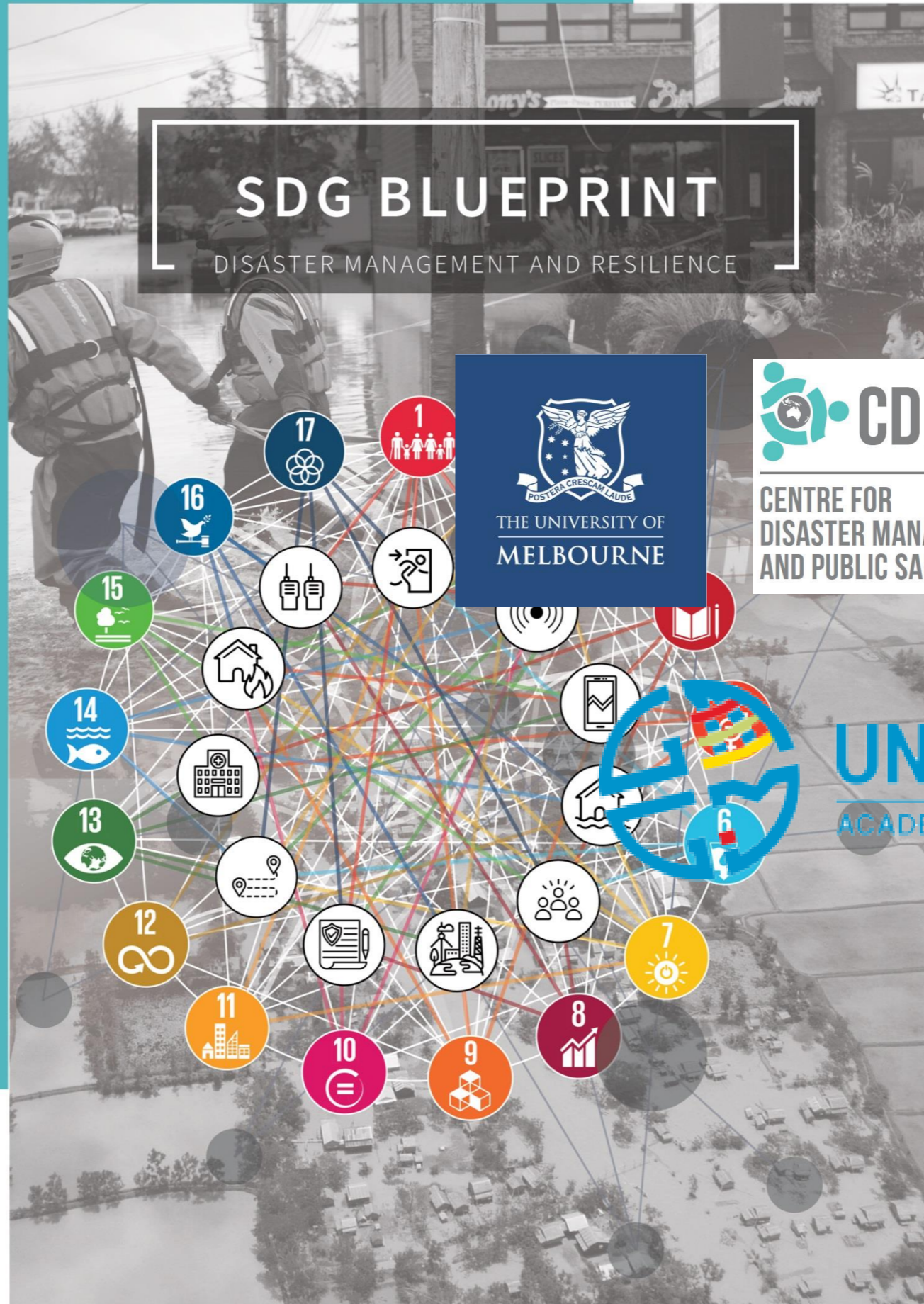
Supporting the **SDGs**

Intensive **mapping** of the **links** between disaster management and **resilience** research themes with the **SDGs** and supporting trans-disciplinary research to overcome real-world challenges.



A Blueprint the SDGs

Supporting



Launch of
A Smart
Landscape
Melbourne

Resilience in a Changing



UN-GGIM
ACADEMIC NETWORK

unggim.academicnetwork.org

International Symposium and Workshops, 24-26 Sept 2018 Melbourne

You're invitation to:



International Symposium and Workshops
**A SMART SUSTAINABLE
FUTURE FOR ALL**
Enhancing Resilience in a Changing Landscape
MELBOURNE, AUSTRALIA | 24 - 26 SEPTEMBER 2018



Supported by:



ssf2018.com @ssfutur18

UN-GGIM | United Nations Initiative on Global Geospatial Information Management
ACADEMIC NETWORK

unggim.academicnetwork.org

THANK YOU

unggim.academicnetwork.org

*Academic Network Meeting,
August 2018*



UN-GGIM
ACADEMIC NETWORK

United Nations Initiative on
Global Geospatial Information Management

unggim.academicnetwork.org