

Cadastral System Implementations Using GIS

Kees de Zeeuw, Esri

April 9, 2024

INEGI – Aguascalientes, Mexico

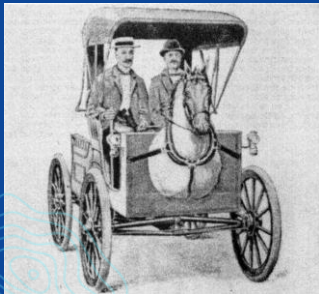
International Seminar on Effective Land Administration

Session #6 – “Partnerships and innovations for effective land administration”



Cadastral system development:

“The moment you finished your desired system, the world appears to have changed again”



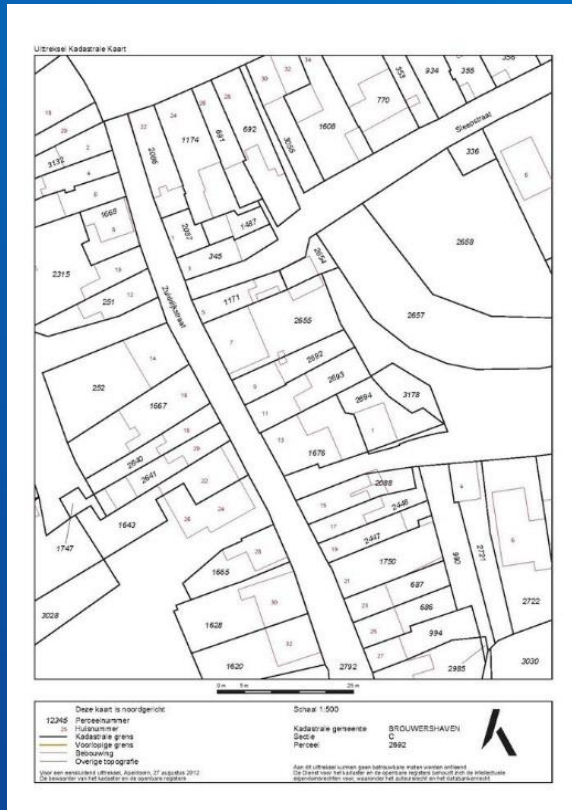


First time registration



Transaction





2D Map



3D model with BIM integration



So,

1 Use what's there

2 Make it sustainability

3 Use GIS for cadastral system development



(But),
Collect



(But),
Manage



Beira - Mozambique, 2019

(But),
Share



Beirut - Lebanon , 2019



1 Use what's there

- Knowledge
- Technology and Tools
- Build and use communities (global, national, local)



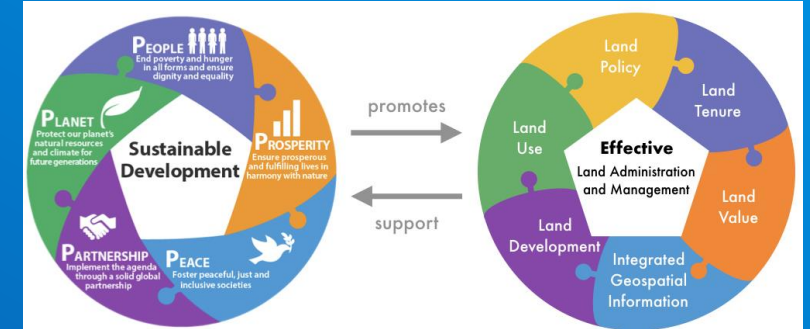
Knowledge

- Guidance

- UN GGIM – Integrated Geospatial Information Framework (IGIF)
- UN GGIM - Framework for Effective Land Administration (FELA)

- Methods and approaches

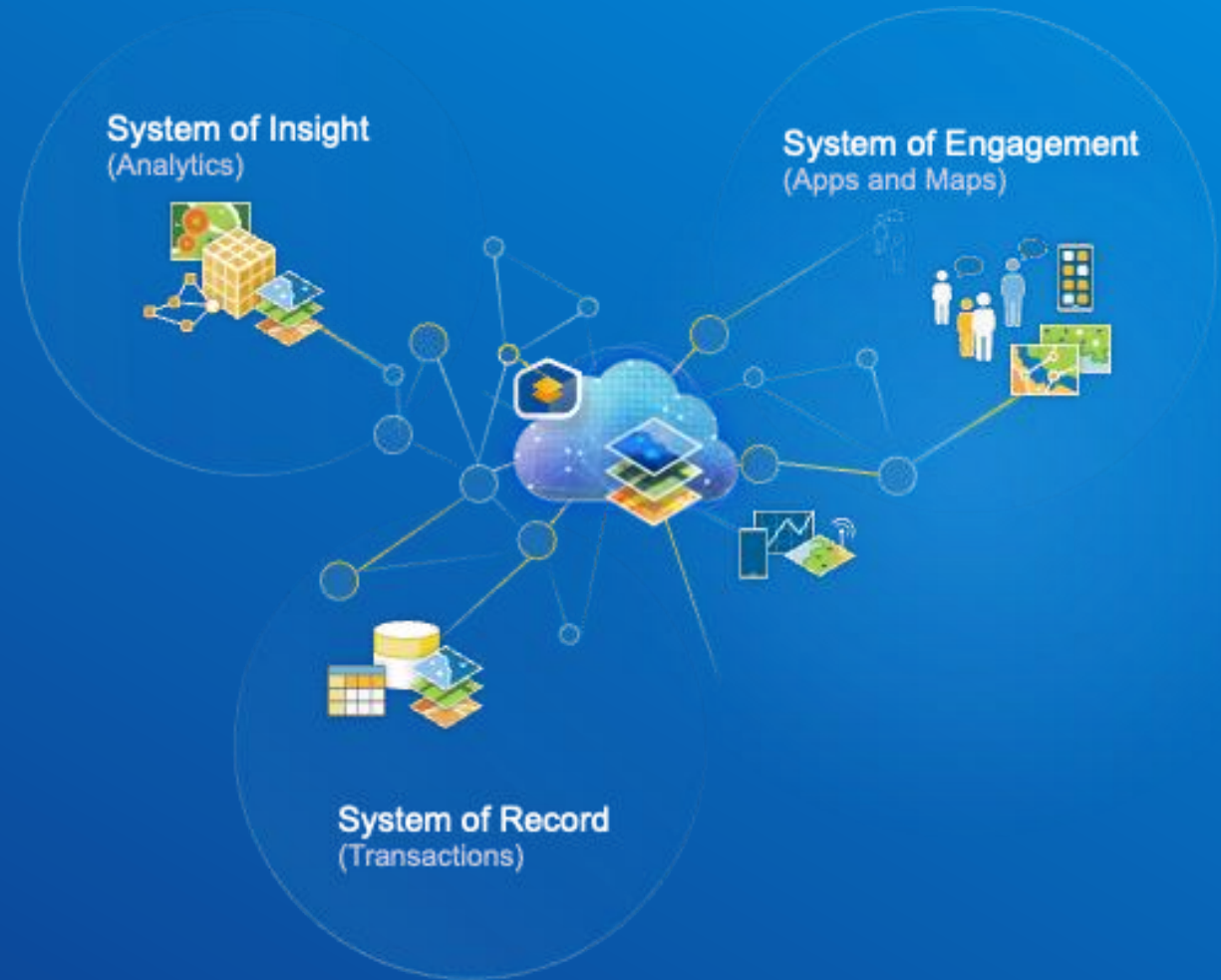
- Land Administration Domain Model (LADM; ISO 19152)
- Fit for Purpose Land Administration (FFP)
- Local and indigenous knowledge



Technology and tools

ArcGIS:

- Parcel Fabric
- Survey123
- Fieldmaps
- Enterprise Architecture
- Workflow Manager
- ArcGIS Pro / Online
- Etc.



Build and use communities

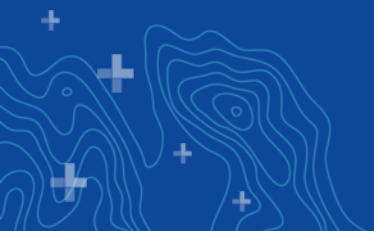
- Global, national, local



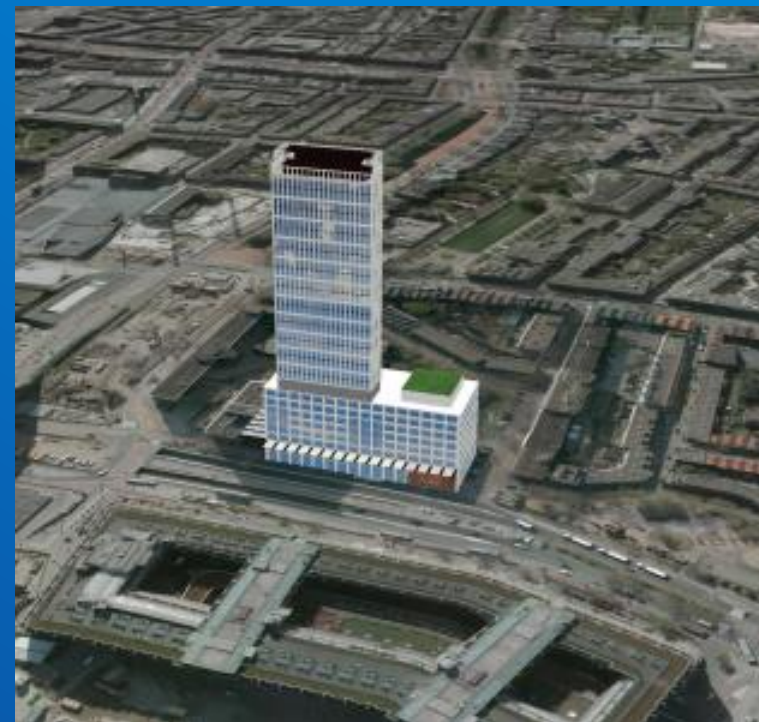
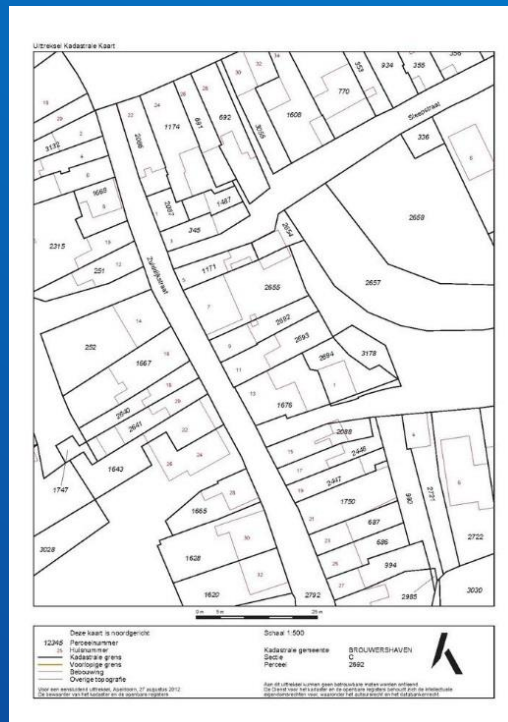
UN GGIM - Expert Group on Land Administration (Singapore, 2021)

2 make it sustainability

- Past, present, future (Map / BIM/ GeoAI)
- Scalable
- Configurable, avoid customization
- Affordable



Past, present, future



Scalability



Projects



Systems



Cloud Services

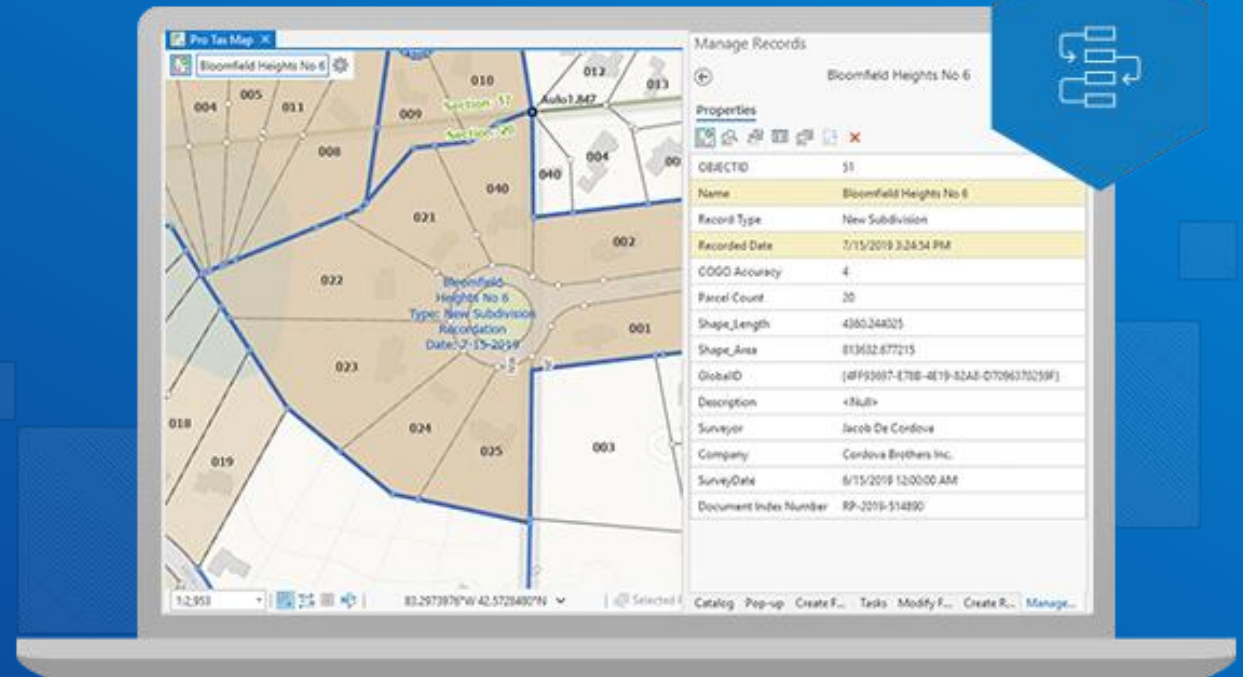


Geospatial Infrastructure
(System of Systems)



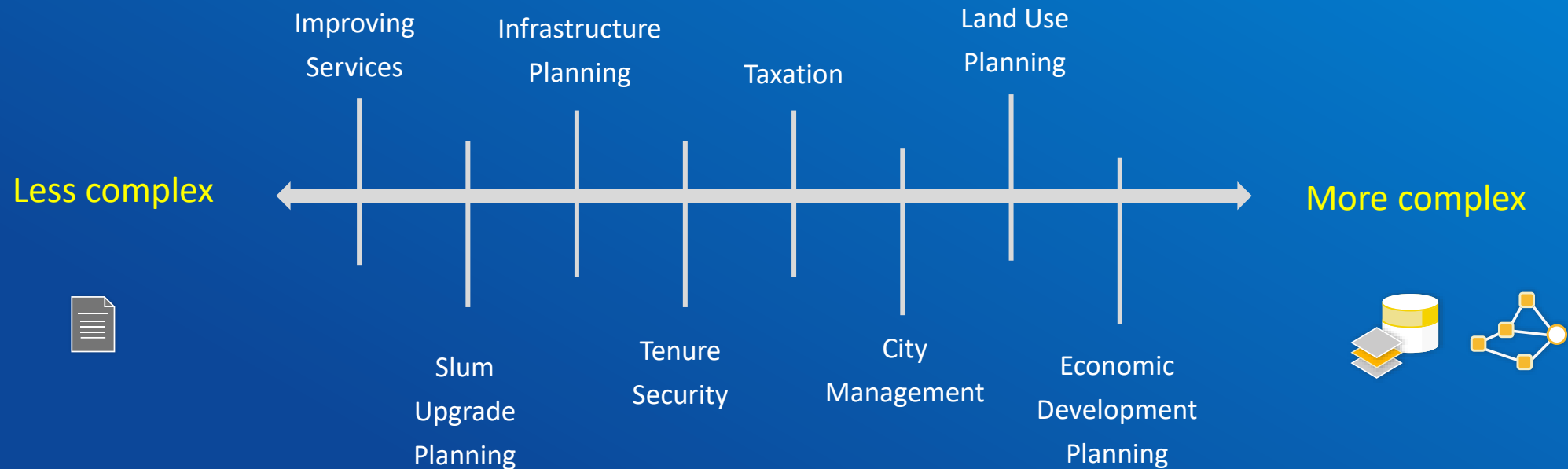
Configurable, no customization

- Take advantage of COTS
- Adapt procedures
- Build capacity (training)



Affordable: Fit for Purpose Implementations

- Consider the geospatial, legal and institutional context



3 Use GIS for cadastral system development

- System of records, insight and engagement
- Follow developments (innovation)
- Hardware, software and capacity



GIS and cadastral development

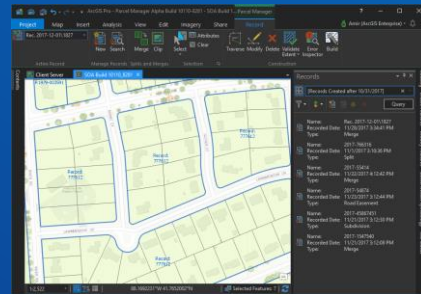
Collect → Manage → Analyze → Share

Field Operations



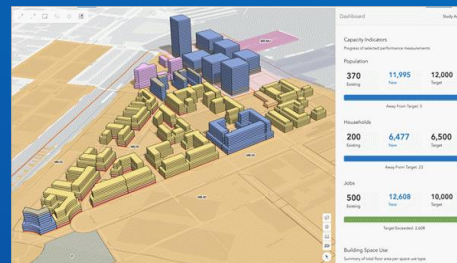
- Fit for purpose, LADM
- First registration
- Workforce Management
- Field capture of parcels and attributes
- Drone imagery

Parcel Management



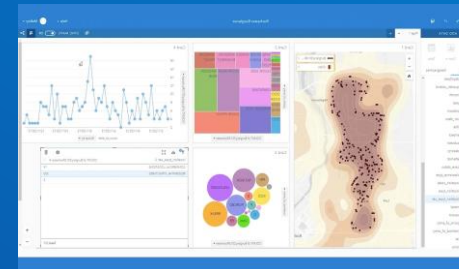
- Parcel Fabric in Pro
- Built in quality management
- Parcel history
- Spatial adjustment

Land Use Planning



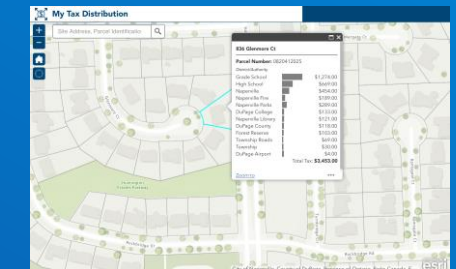
- Create zoning and land use plans
- Visualize projects
- Report on indicators
- Increase engagement

Property Valuation



- Geo-enrichment
- Data visualization and exploration
- Spatial Modeling & Value Prediction

Stakeholder Engagement



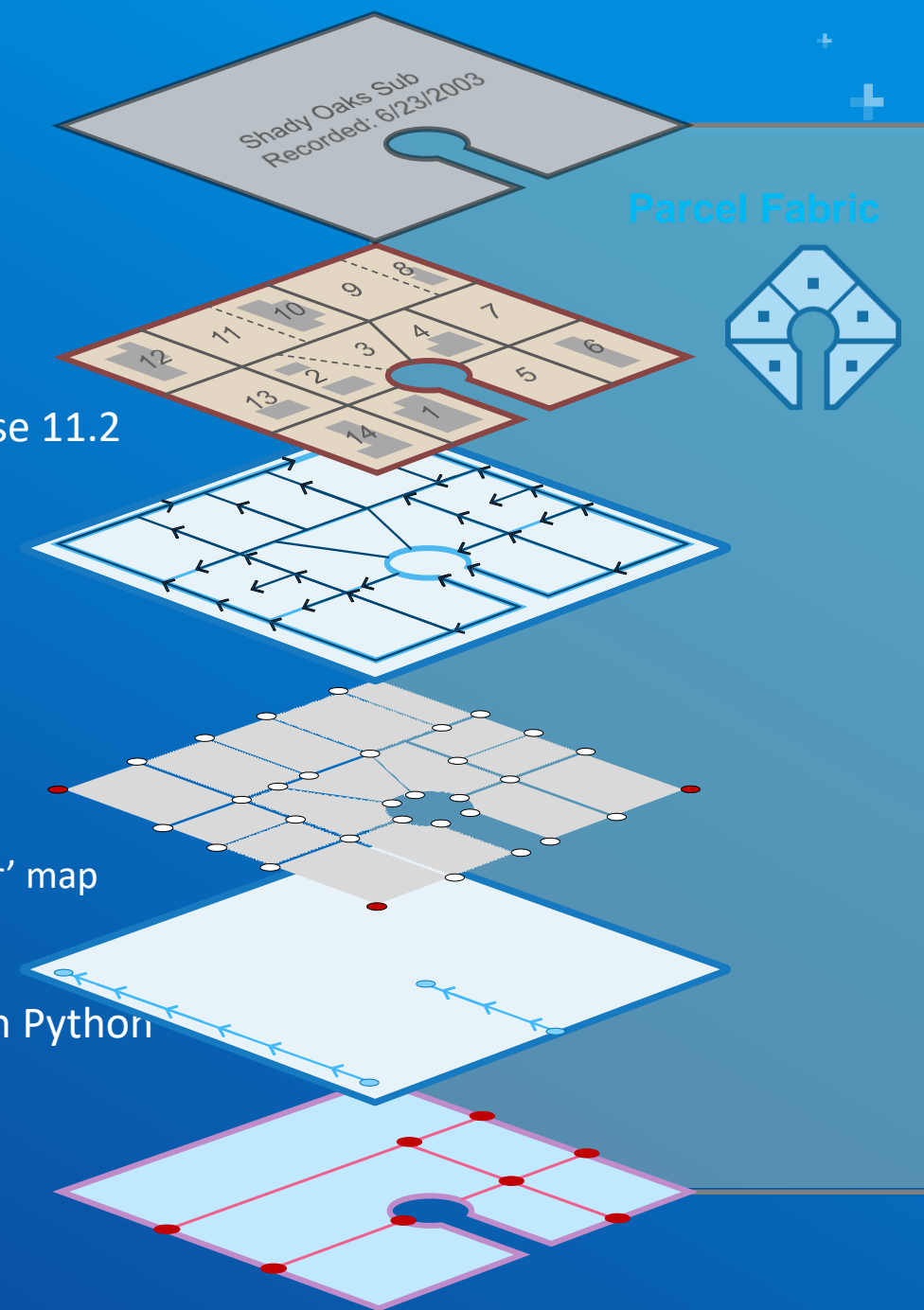
- Open data and SDI
- Community engagement
- Public-facing maps & apps

Follow developments (innovation)

(Communication - November 9, 2023)

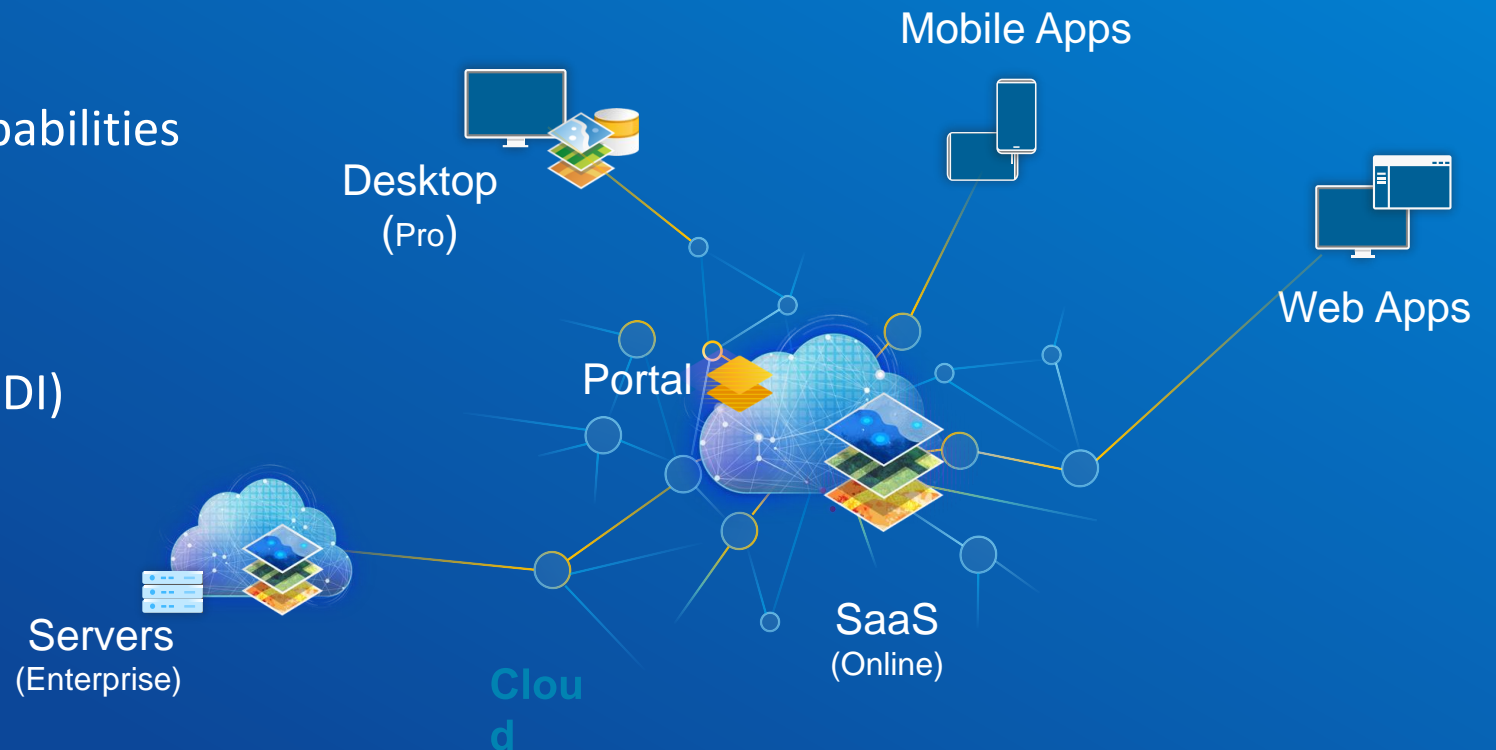
New functionality of Parcel Fabric in ArcGIS Pro 3.2 and ArcGIS Enterprise 11.2

1. New simplified **licensing** for anything that involves advanced editing
2. **Parcel Lineage** depiction using Link Charts
3. **Offline** parcel fabrics
4. **Manage Records** – field configuration and enhanced UI-UX
5. **Set Current / historic** also works on points
6. **Align parcels** enhancements
7. New geoprocessing tools:
 1. GP **Export Parcel Record Features** - used to create the 'Before and After' map
 2. GP **Delete Parcels**
 3. GP **Create Parcel Seeds**
8. **Active record automation** part of the CIM and can be automated with Python
9. **LSA**: support of additional direction types
10. The **Explode** editing tool is 'active record aware'
11. **Highlight Gaps and Overlaps** enhancement
12. **Schema Report**



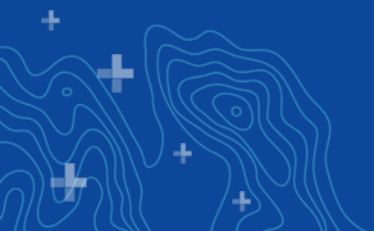
Hardware, software and capacity

- Integrated registries and maps
- Scalable (performance, number of records, workflows and capabilities)
- Versioning (past, present, future)
- Use of standards (OGC, ISO, LADM)
- ETL (Extract, Transform and Load) capabilities
- Interoperability
- Data quality and security
- Evolvable (multipurpose cadaster, NSDI)
- Training and capacity



Examples

- Cyprus
- Hong Kong
- Morocco



Cyprus: Dept of Lands and Survey

Modernization of National Computerized LIS



REPUBLIC OF CYPRUS | MINISTRY OF INTERIOR
DEPARTMENT OF LANDS AND SURVEYS



The Department of Lands and Surveys announces that next Saturday 02/09/2023 from 10:00 a.m. until 02:00 p.m., the DLs Portal will not be available, due to technical upgrades to the Government Internet Network infrastructure. The Department apologizes for any inconvenience to the public.



CITIZENS (INDIVIDUALS/COMPANIES)

- CORRECTION OF ERROR TO GENERAL VALUATION
- OBJECTION TO NEW CADASTRAL PLAN
- DEMARCATION OF IMMOVABLE PROPERTY
- PROVISION OF GIS DATA
- APPLICATION TRACKING SYSTEM
- OBJECTION TO GENERAL VALUATION

e-Cadastre

Welcome to the Web Portal of the Department of Lands and Surveys ("ARIADNI - Government Gateway" Registration is Required)

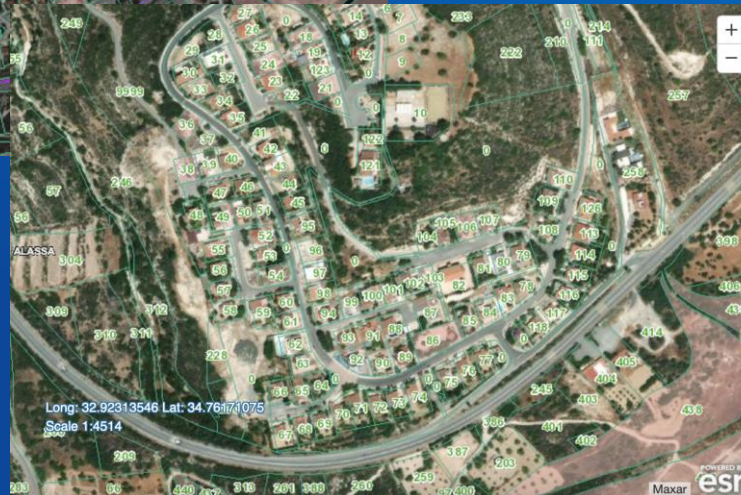
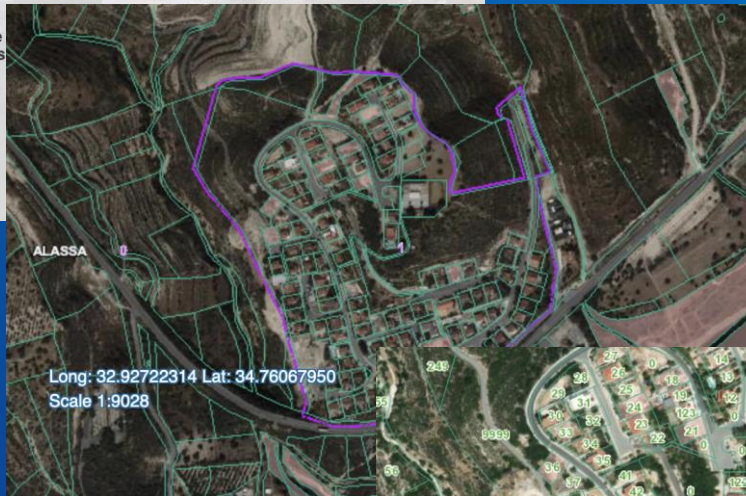
LOGIN

REGISTER

DEPARTMENT OF LANDS AND SURVEYS



The wealth of data in the Department is enormous and is considered as the most important strategic asset of the Department of Lands and Surveys.



CLIS

- Digital Transformation of 20+ year old platform
- Services Based Architecture
- First national level deployment of the Parcel Fabric
- Workflows for Customer Transactions
- Dashboards and Reporting
- Integration into Legal & Fiscal System



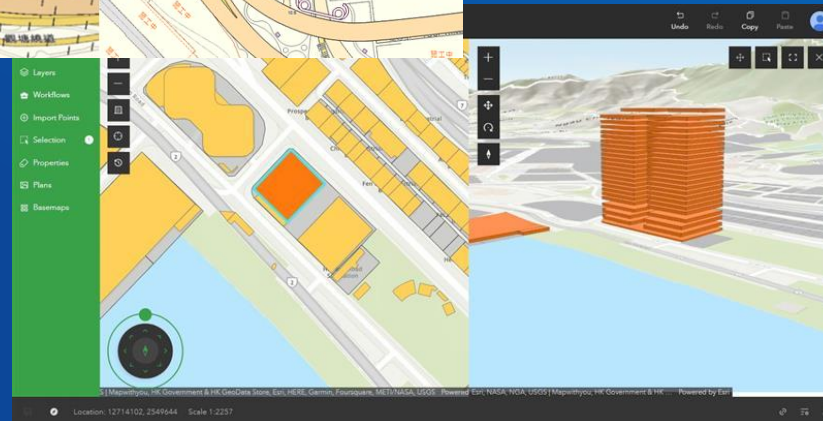
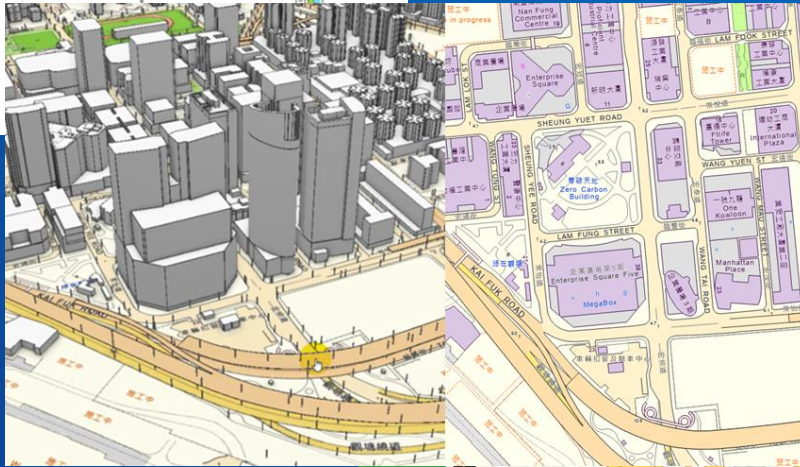
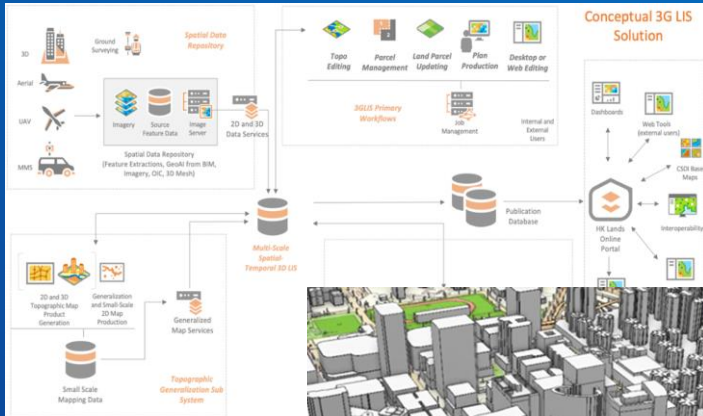
Lands Department, Hong Kong

Feasibility Study for the 3GLIS



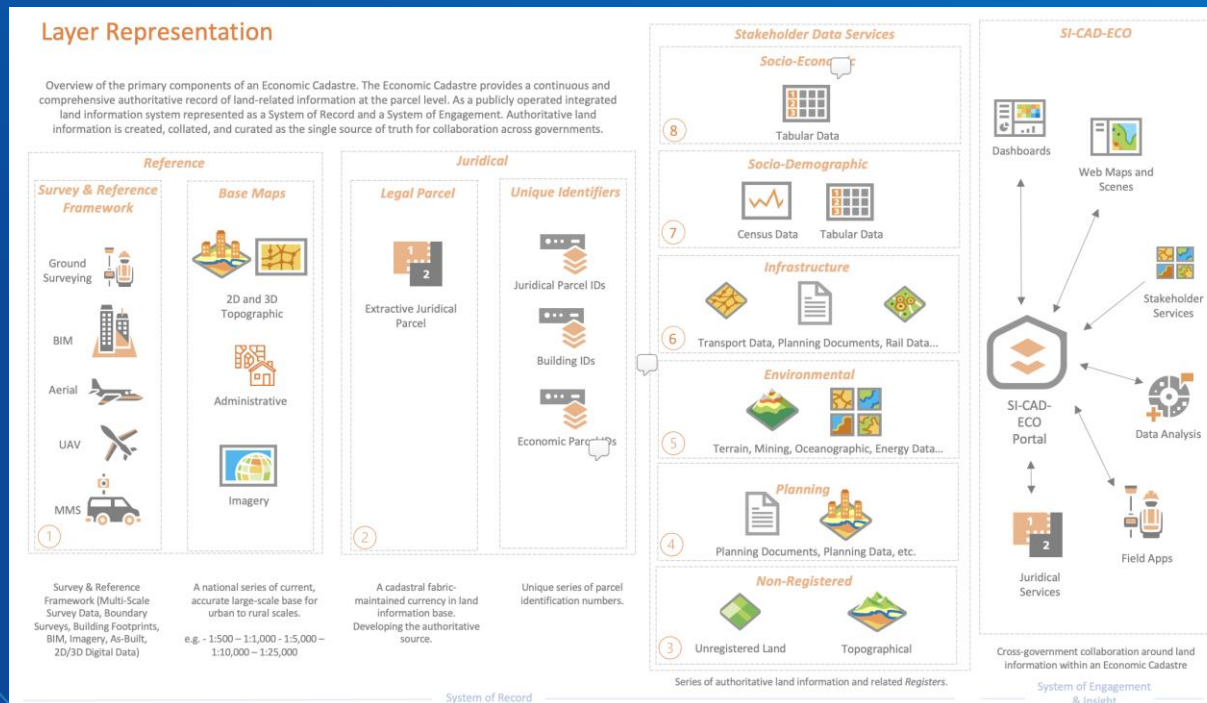
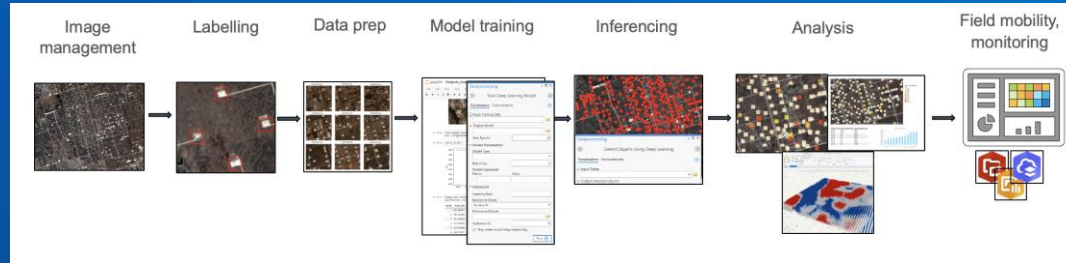
3GLIS

- Digital Transformation – 2D to 3D System of Record
- National Objectives
 - Smart Hong Kong
 - Development of a Digital Twin
- Design Principles
 - Cloud First Architecture
 - Web Editing
 - Full 3D System of record
 - Nex Generation Workflow Management
 - Portal and Apps
 - Serving the CSDI



ANCFCC, Morocco

Design of the National Economic Cadastre



SI-CAD-ECO

- Design of a National Economic (Multipurpose) Cadastre
- Cloud First Architecture
- Development of GeoAI Workflows for Feature Extraction
- Supporting the Morocco SDI
- Implementation of the Parcel Fabric at the National Level

Conclusions

1 Use what's there

- Knowledge
- Technology and Tools (ArcGIS, PF, Survey123, ...)
- Build and use communities (global, national, local)

2 Make it sustainability

- Past, present, future
- Scalable
- Configurable, avoid customization

3 Use GIS for cadastral system development

- Records, insight, engagement
- Follow developments (innovation)
- Hardware, software and capacity



esri®

THE
SCIENCE
OF
WHERE®

