



NLS
NATIONAL
LAND SURVEY
OF FINLAND

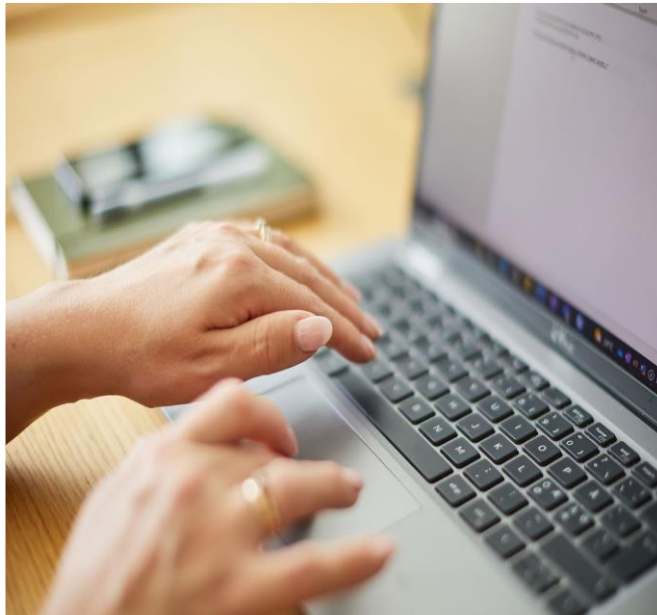
We know the Earth – we secure the future

Some key elements for implementing the
Framework for Effective Land Administration

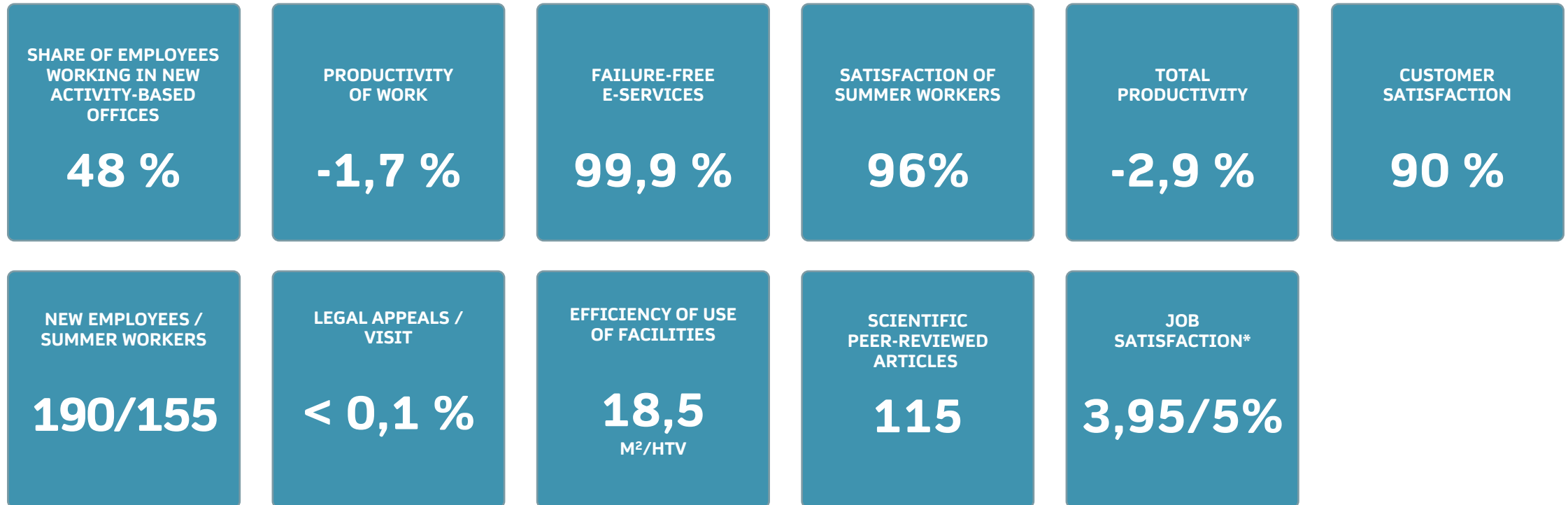
Mr. Markku Markkula

UNGGIM Aguascalientes, Mexico

8th April 2024



Year 2022 in figures

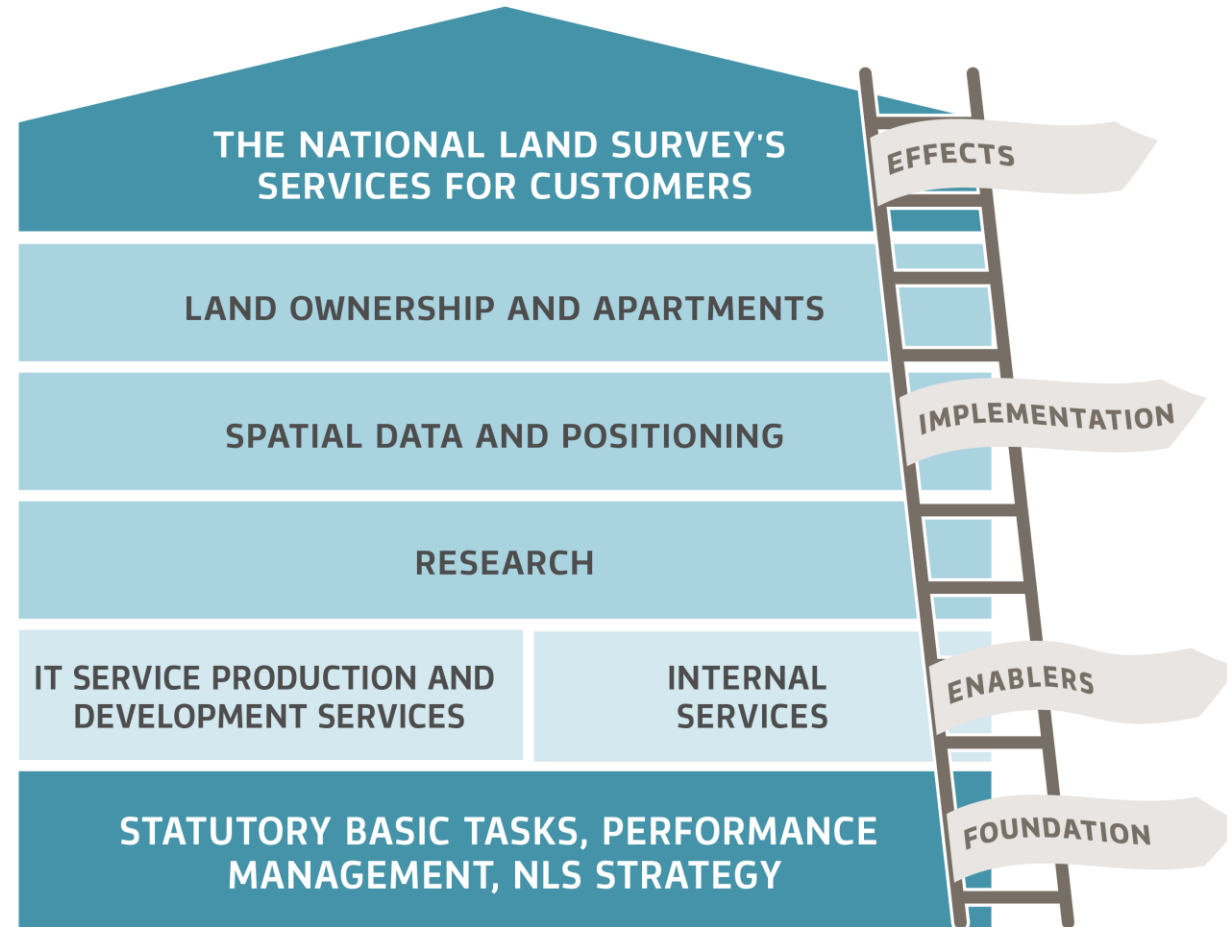


*VMBaro 2021, the job satisfaction survey

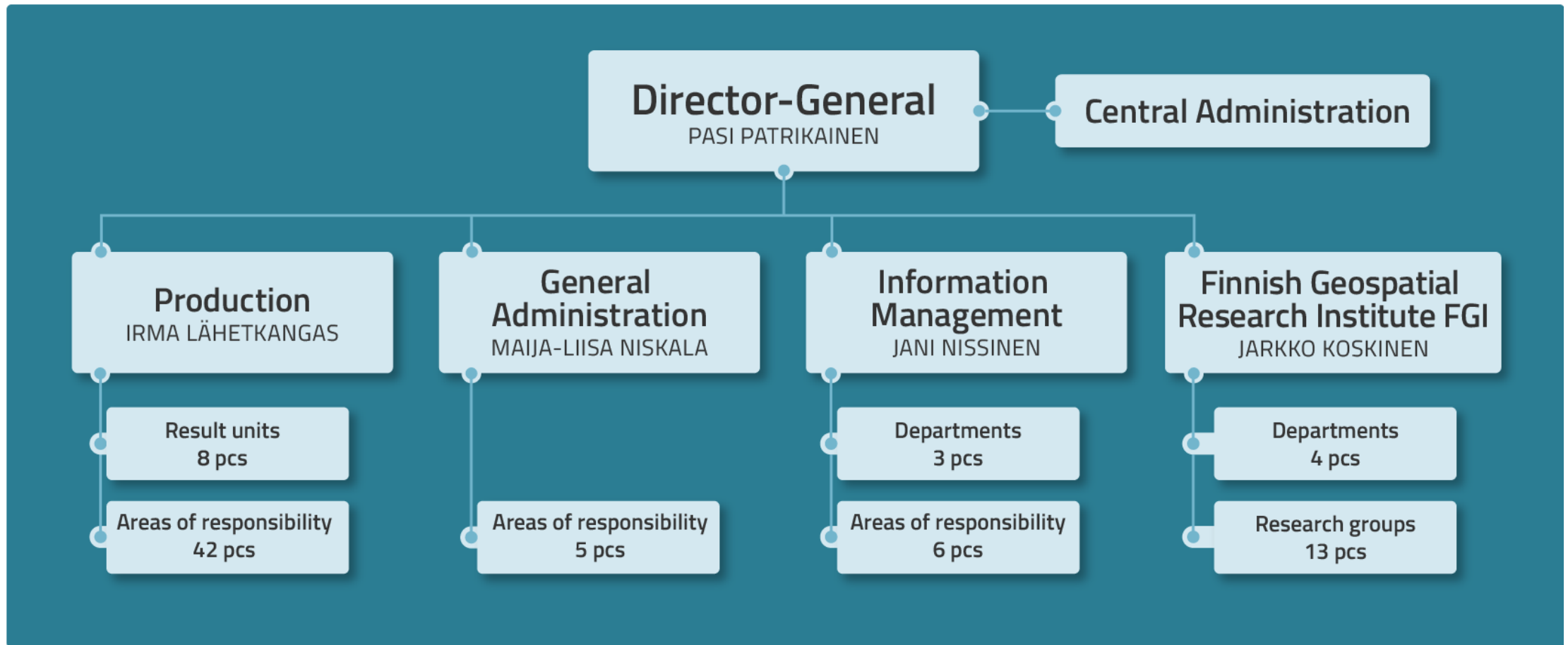
Vision: We know the Earth – we secure the future



Secure high-quality services for customers



The National Land Survey 2023



Strategy Implementation

Owners are appointed for the strategic objectives. These owners are matrix directors of the Central Administration.

- Legislative Director
- Director of Customer Relations
- Director of Development and Digitalisation
- Research Director

Management system – Management roles

Operation units

Deputy Directors-General

- Production
- Administrative Director
- Chief Information Officer
- Finnish Geospatial Research Institute (FGI)

Central Administration

- Director-General
- Deputy Director-General
- Director of Customer Relations
- Director of Development and Digitalisation
- Research Director
- Security Director
- Legislative Director
- Head of International Affairs

Data to serve society

We offer information, research results and innovations as extensively as possible for others to **use** and further **develop**.

We develop our datasets and services **in cooperation** with our customers and partners.

Sustainable environment

We reduce the **carbon footprint** of our operations.

We produce knowledge and research to support decision making and development that can slow down **climate change** and promote **biodiversity**.



People who feel well

Together, we take care of each other's **wellbeing**, satisfaction and development opportunities.

We promote **diversity, equality and non-discrimination** in our operating culture.

Sustainable way of working and economic sustainability

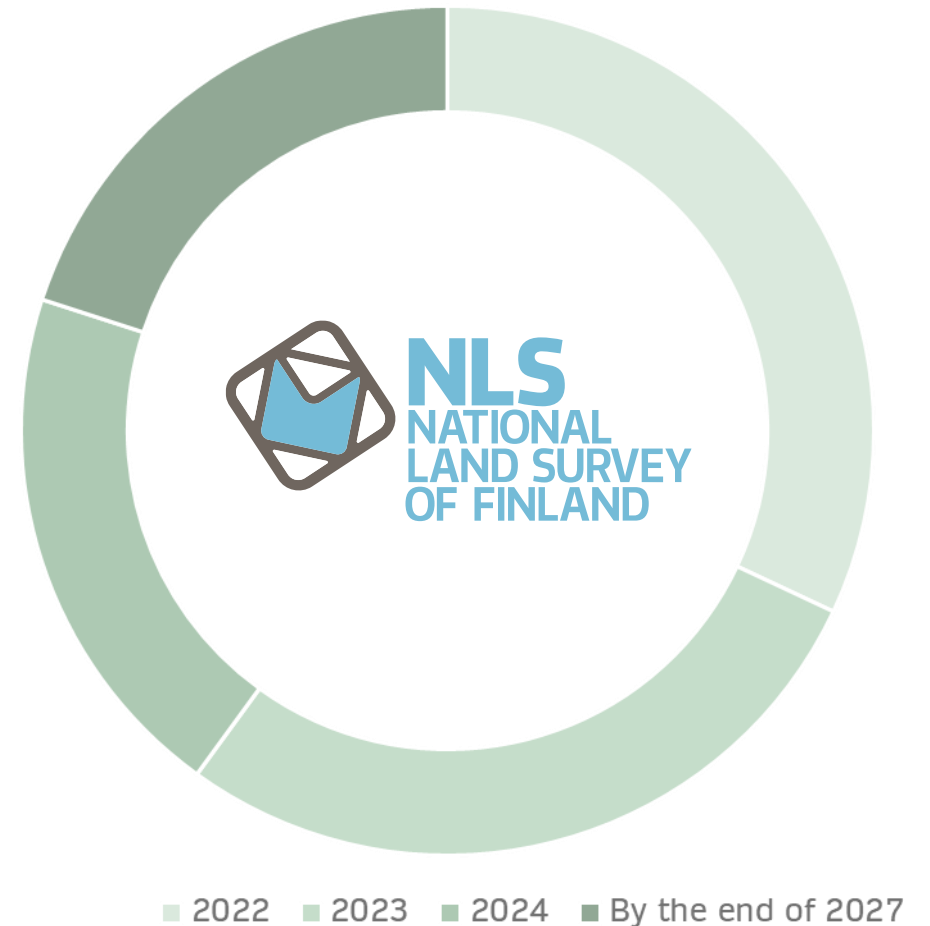
In our operations, we foster reliability, interactivity and transparency, and develop our **sustainability skills**.

We use **our resources** responsibly and develop operational effectiveness.

Towards 50 acts of sustainability

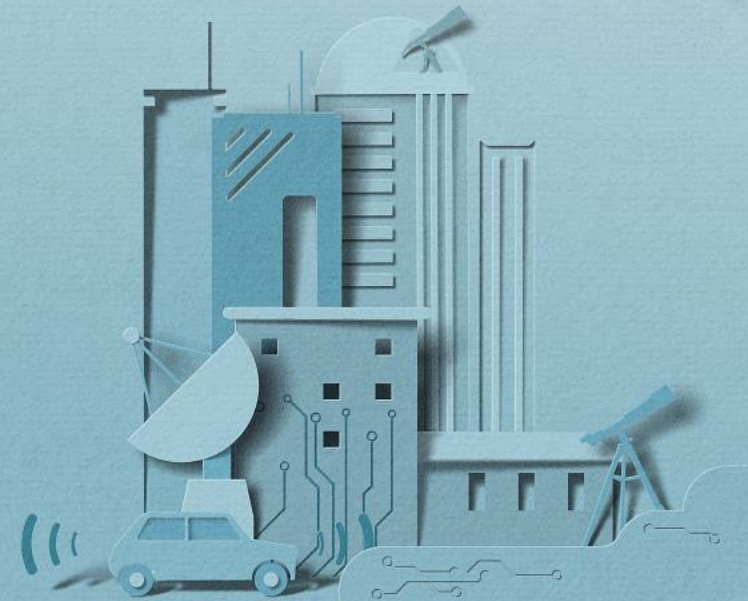
The journey towards the goal is proceeding excellently.

- **16** acts of sustainability in 2023
- **14** acts of sustainability in 2023
- **10** acts of sustainability in 2023
- Altogether **50** acts of sustainability by the end of 2027.



Courage and the ability to create something new

We conduct top research and develop new things boldly.
The information we share openly enables growth in society.



One jump ahead

- Recognised top research within the field of spatial data
- International expert work
- Open research data
- Support for utilisation of spatial data



Strong IT skills

Advanced, reliable and cost-effective IT services as the foundation for digital operations



Reliable partner

The National Land Survey has an important role in the cooperation between state organisations.

We participate in and lead development projects that are significant for society.



Development projects

Further development of the
Residential and Commercial
Property Information System

E-services entity

Reform of system for valuation
of land in real estate taxation
(MaaVero)

Reform of the topographic
data production system

Effective and reliable digital services

- Reliability is based on continuous development
- Registers serve society in many ways
- Information security and data privacy are important



Reliable registers

Cadastral data
Cadastral data

Official purchase price register
Information about property conveyances

Private road register
Information about road location and administration

Title and mortgage register
Information about property owners and mortgages

Register of housing company shares
Information about the owners of residential and commercial properties in the Residential and Commercial Property Information System

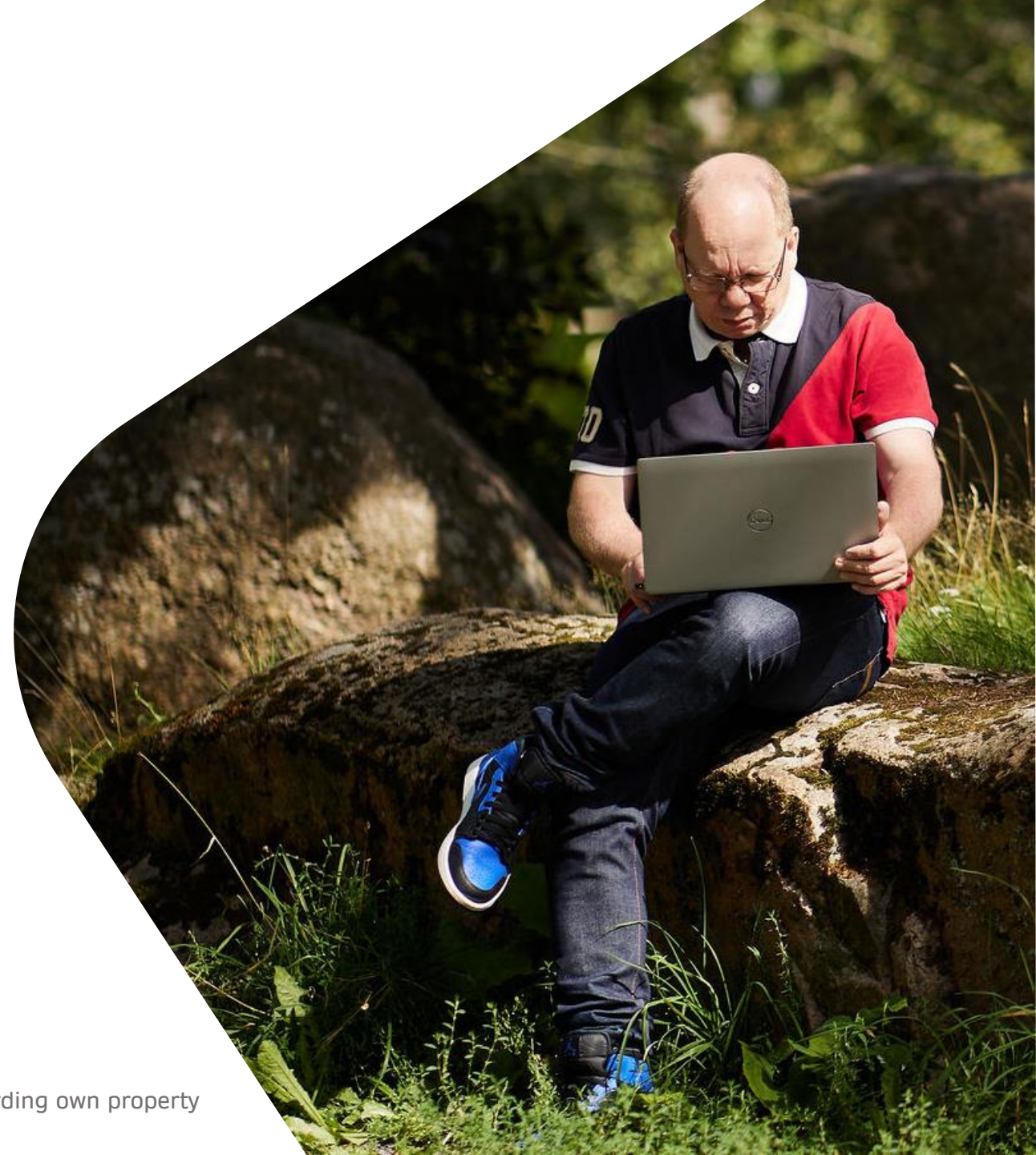
Will to serve

Our customer-oriented digital services are safe and easy to use. You can handle your case with us from anywhere.



E-service

- Check information about your property
- Buy extracts or certificates regarding your property



The Finnish Geoportal Paikkatietoikkuna

- You can utilise spatial datasets and spatial data services
- Aimed at the public and spatial data professionals



Property Transaction Service

Handle your real estate sales and mortgage matters smoothly on the web.



Land Information Service

- Aimed at authorities and licensees
- You can browse real estate information and map data



Housing company share register transfer service

- A service for transferring a housing company's share register into the Residential and Commercial Property Information System
- Aimed at housing companies and managers of residential properties



Open data

- Topographic database
- Raster maps
- Elevation models
- Aerial photos
- Laser scanning data
- Geographic names
- Addresses
- Property boundaries and identifiers



MapSite

- Read more about the National Land Survey's topographic maps, aerial photos, background maps and property boundaries
- Search for maps from entire Finland with e.g. address, property identifier or coordinates
- Buy printed maps and customised map printouts



Suomi.fi-kartat (government's map service)

A map service providing spatial data and maps aimed at the public administration



We know the Earth –
we secure the future

