

An aerial photograph of a dense green forest. A dark asphalt road runs horizontally across the middle of the image. Overlaid on the forest is a semi-transparent grid of light green lines, representing a land management or urban planning map. The grid lines are irregular and follow the contours of the terrain and the road.

EFFECTIVE LAND ADMINISTRATION

National Subsystem of
Geographic, Environmental,
Territorial and Urban Information

PALOMA MERODIO GÓMEZ
Vice president of INEGI

CONTENT



SNIEG



SNIGMAOTU



SPECIALIZED TECHNICAL
COMMITTEES



National System of Statistical and Geographical Information

SNIEG



National Advisory Council



National Information Subsystems



INEGI

What generates The SNIEG?



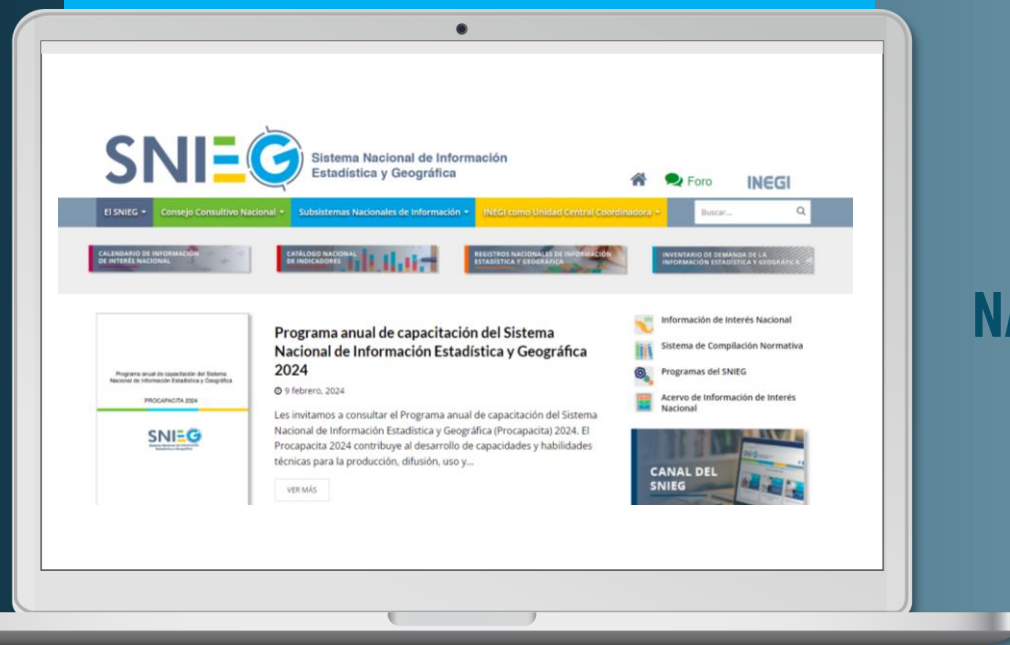
INFORMATION OF
NATIONAL INTEREST



KEY INDICATORS



REGULATORY
PROVISIONS





National Information Subsystems



**Demographics
and Social**



Economics



**Geographical,
Environmental,
Territorial and
Urban Planning**



**Government,
Public Security
and Justice**

SNIGMAOTU

**National Subsystem of Geographic,
Environmental, Territorial and Urban
Information**



Geographical, Environmental, Territorial and Urban Planning

Geographic
component

Environmental
component

**INFORMATION
INFRASTRUCTURE**

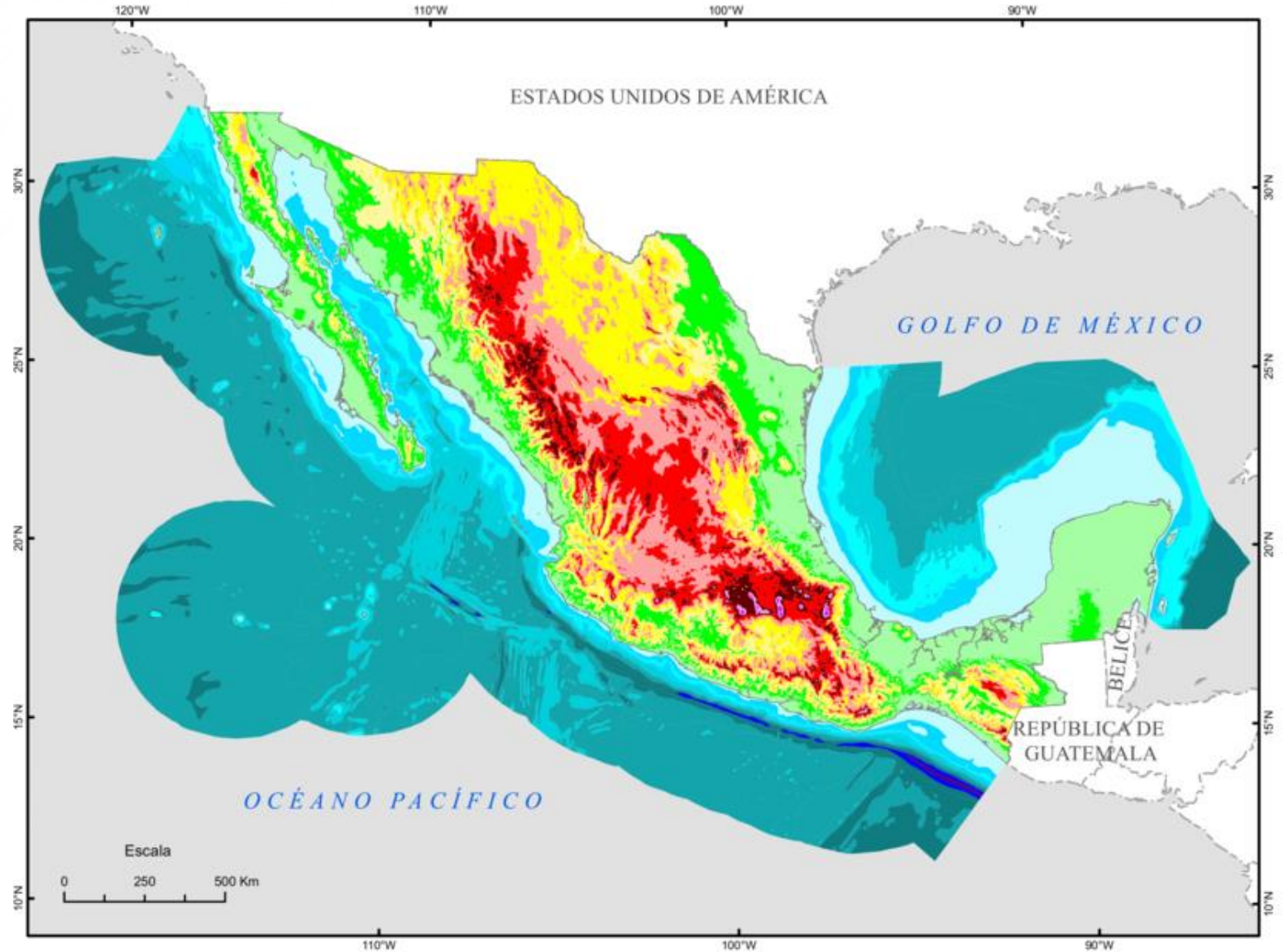
Land and urban
planning
component

Key Indicators





Island Territory and Coastline





Geostatistical Framework

ESTADOS UNIDOS MEXICANOS

CARTA DEL MARCO GEOESTADÍSTICO



The background of the slide is a light blue, semi-transparent map of a city grid. The map shows a complex network of streets, including a prominent river or canal winding through the center. The lines of the map are thin and light blue, creating a subtle pattern behind the text.

SPECIALIZED

Technical Committees

Specialized Technical Committees



**Basic
Geographic**



**Land Use, Vegetation
and Forestry Resources**



**Water
Information**



Energy Sector



**Marine
Information**



**Climate Change,
Emissions and Waste**

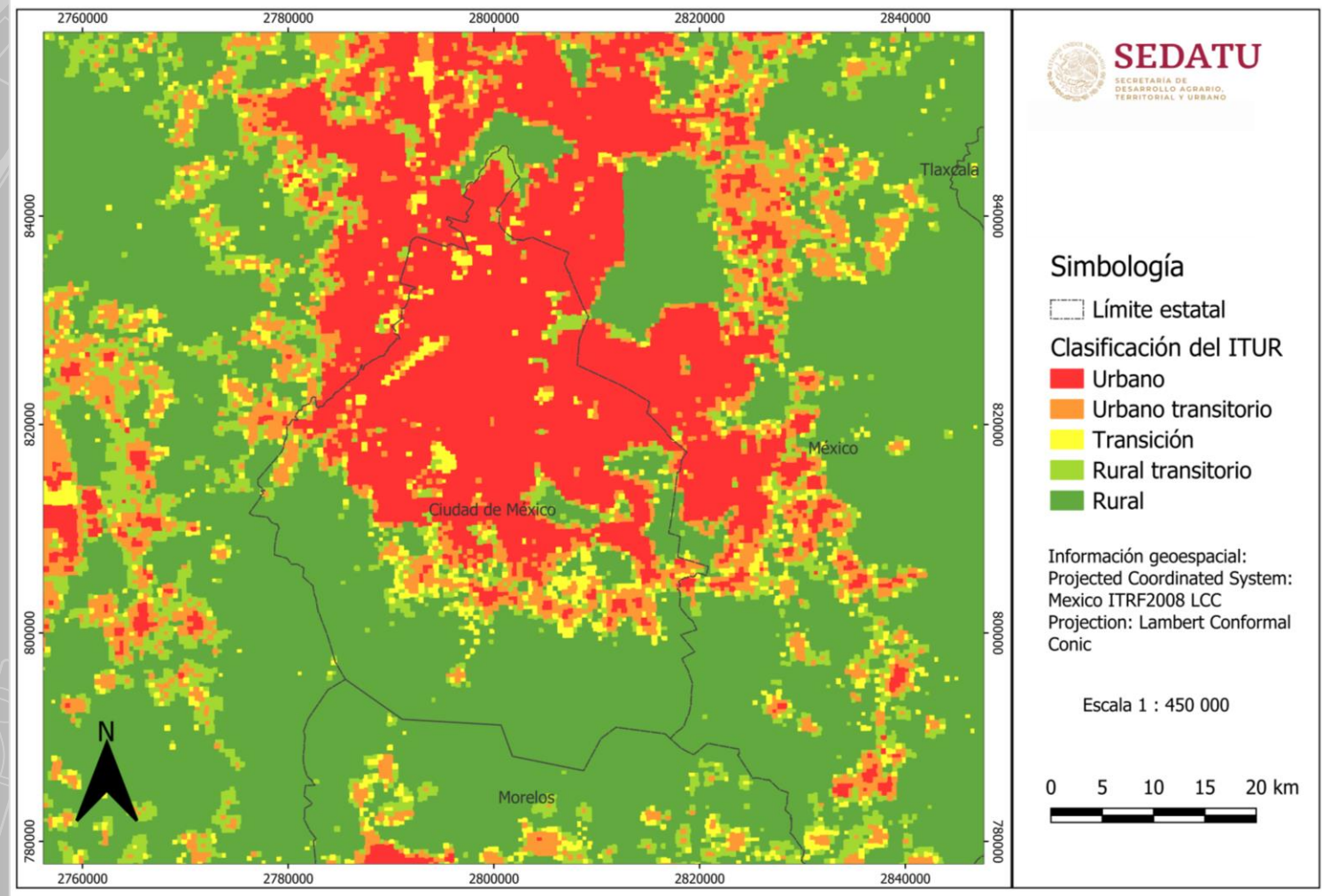


**Regional and Urban
Development**



**Cadastral and
Registry**

Urban-Rural Territorial Index



THANK YOU

PALOMA MERODIO GÓMEZ
Vice president of INEGI

 @PalomaMerodio

 @paloma_merodio

 @paloma_merodio