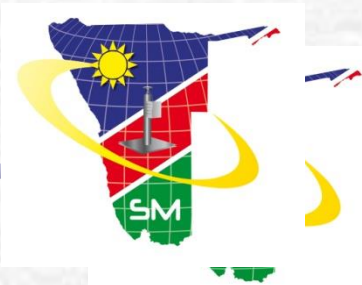




Role of geospatial Information in Good Land Policy and Governance

UZOCHUKWU OKAFOR
SURVEYOR-GENERAL
NAMIBIA



09 May, 2016

Fourth High Level Forum on UN-GGIM Addis Ababa
Good Land Governance for the 2030 Agenda



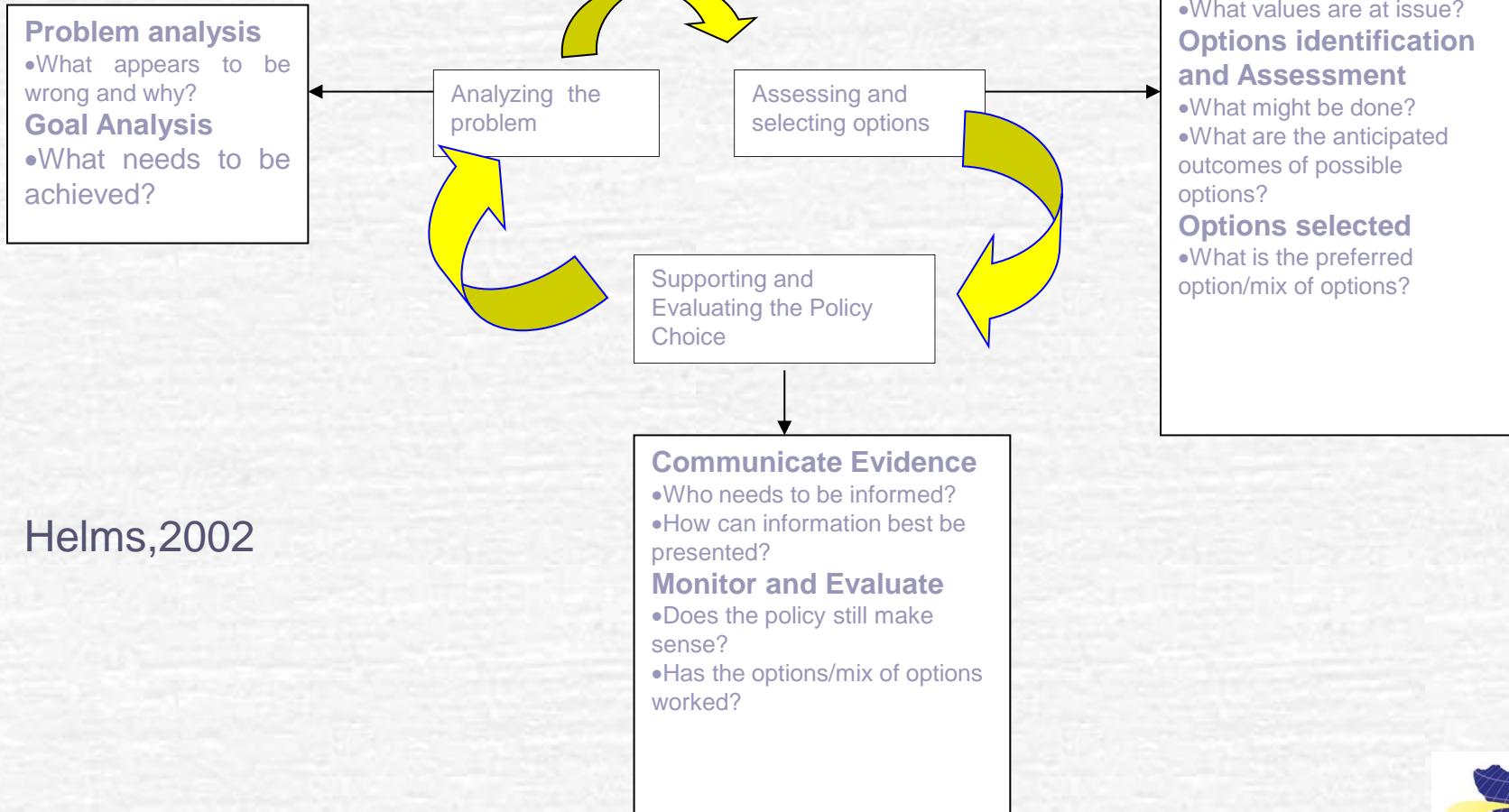
Good Governance

- ✓ Democracy
- ✓ Accountability
- ✓ Transparency
- ✓ Equity and racial balance
- ✓ Participation
- ✓ Consensus building



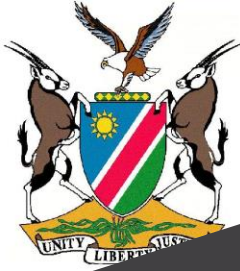


Policy Analysis Design Methodology



Helms,2002





Harambee Prosperity Plan

EFFECTIVE GOVERNANCE	ECONOMIC ADVANCEMENT	SOCIAL PROGRESSION	INFRASTRUCTURE DEVELOPMENT	INTERNATIONAL RELATIONS AND COOPERATION
Accountability & Transparency	Macro-Economic Stability	Hunger Poverty	Energy Infrastructure	Respected and trusted International Community member
Improve Performance & Service Delivery	Economic Transformation	Land Delivery, Housing & Sanitation	Water Infrastructure	
	Youth Enterprise Development	Infant & Maternal Mortality	Transport Infrastructure	International Support for Economic Independence.
Economic Competitiveness	Vocational Education Training	ICT Infrastructure		



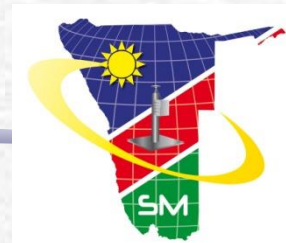
ONE NAMIBIA, ONE NATION
PEACE, RECONCILIATION, SECURITY & STABILITY





Spatially Enabled Governance

- Infrastructure providing place or where or location to all human activities, government actions, decisions & policies (Williamson, 2007)
- Promotes
 - Improved decision making
 - Whole of government outcomes
 - Effective & more transparent coordination- voters able to use spatial info to evaluate choices made by elected officials
 - Creation of sustainable economic wealth
 - Maintenance of environmental sustainability
 - Effectiveness in meeting performance targets





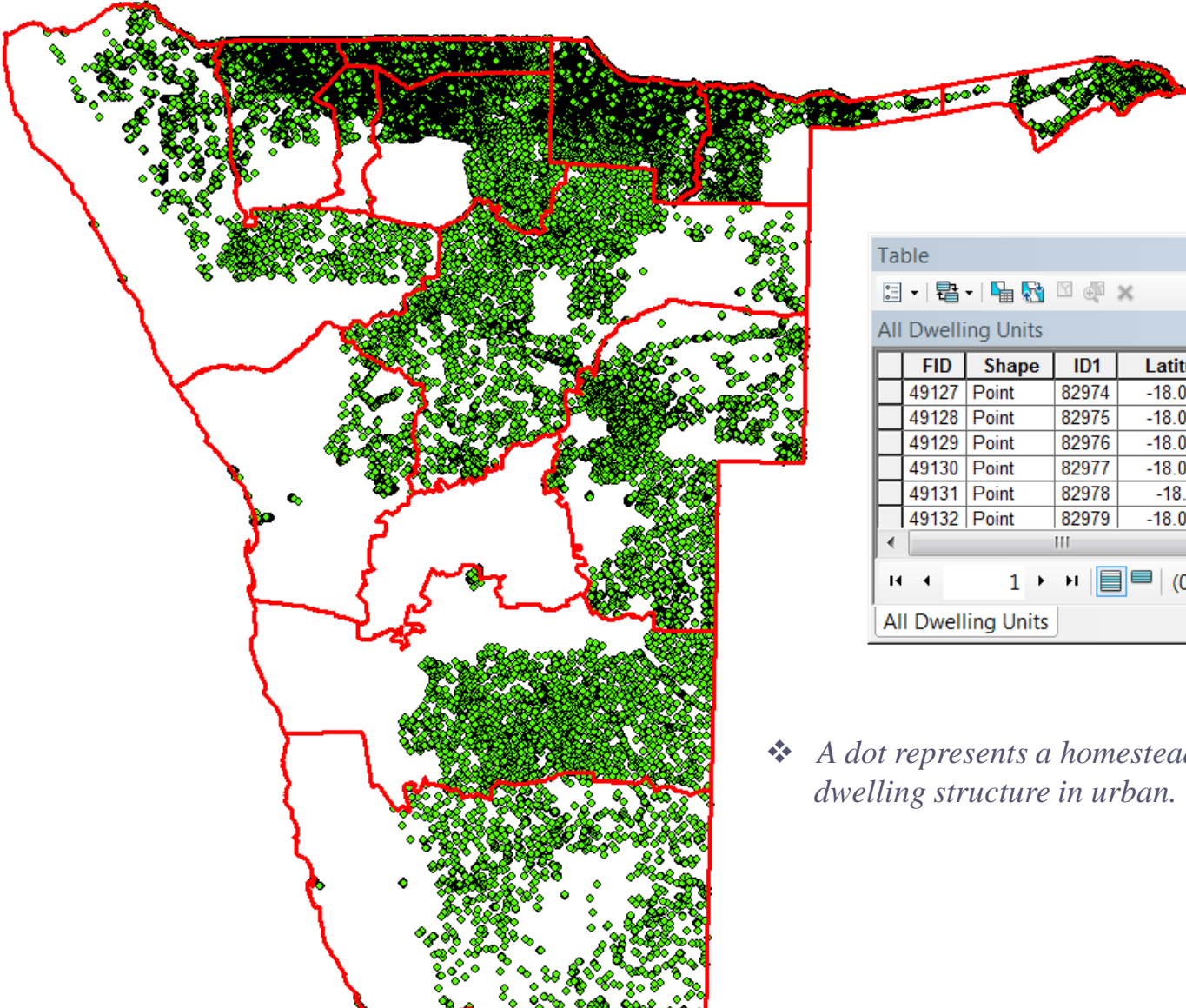
Spatial Information in support of Government Objectives and Outcomes

- While IT bridges distance gap, SDI defines locations and environmental characteristics
- SEG links people, things, phenomena to government's policy responses
- Good Governance – achievement of most appropriate developmental policy objectives sustainably
- Geospatial Information provides evidence to support rationale allocation of resources, impact assessment and equitable distribution of amenities and infrastructure.





NAMIBIAN EXAMPLE 1: "WHERE" exactly is the concentration of households affected by drought in Namibia?



Table

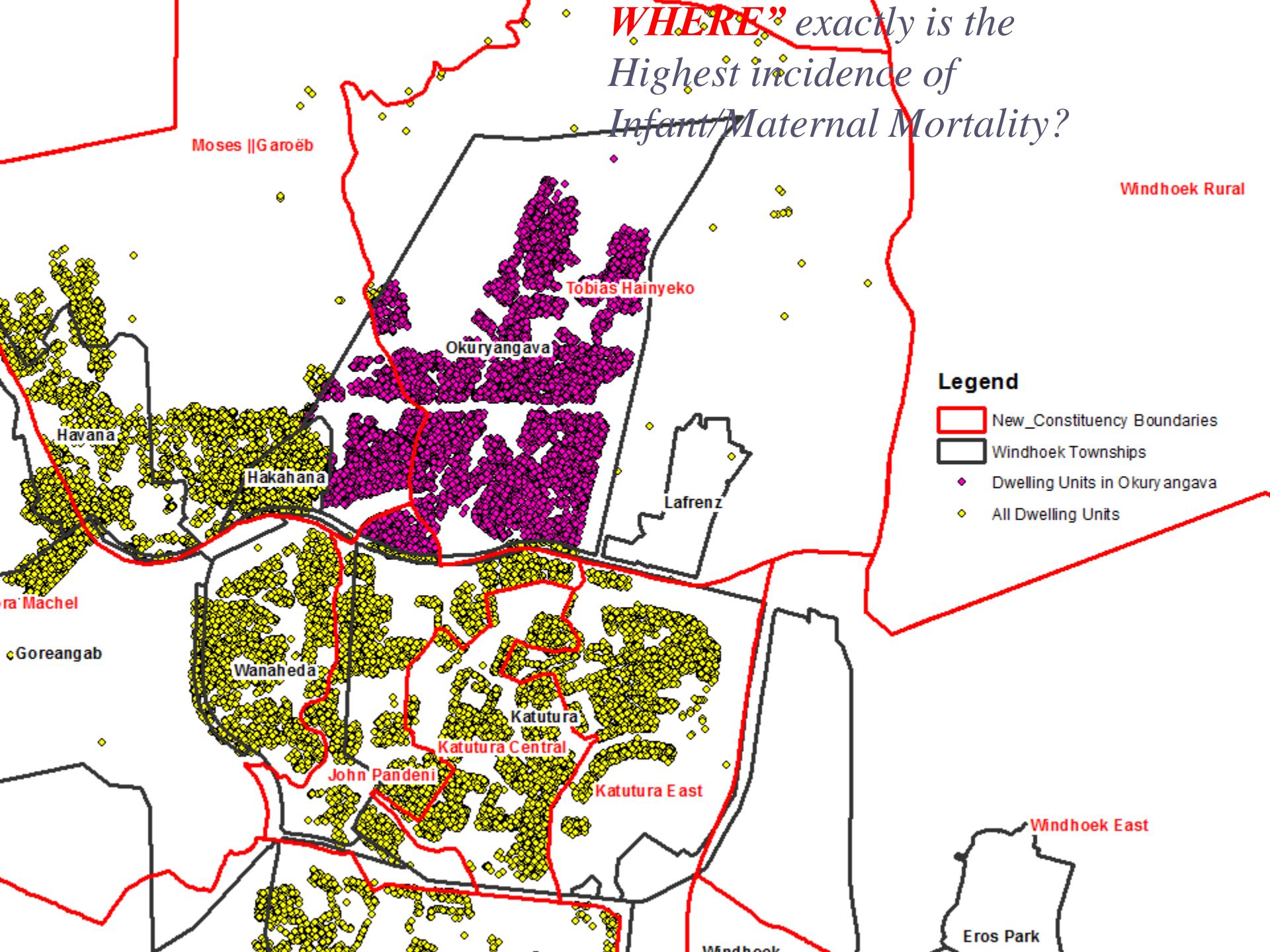
All Dwelling Units

FID	Shape	ID1	Latitude	Longitude	Disabled	EA_numbe
49127	Point	82974	-18.025653	22.230616		50599034
49128	Point	82975	-18.028769	22.232226		50599034
49129	Point	82976	-18.029066	22.233871		50599034
49130	Point	82977	-18.026354	22.234148		50599034
49131	Point	82978	-18.02634	22.236767		50599034
49132	Point	82979	-18.026304	22.238105		50599034

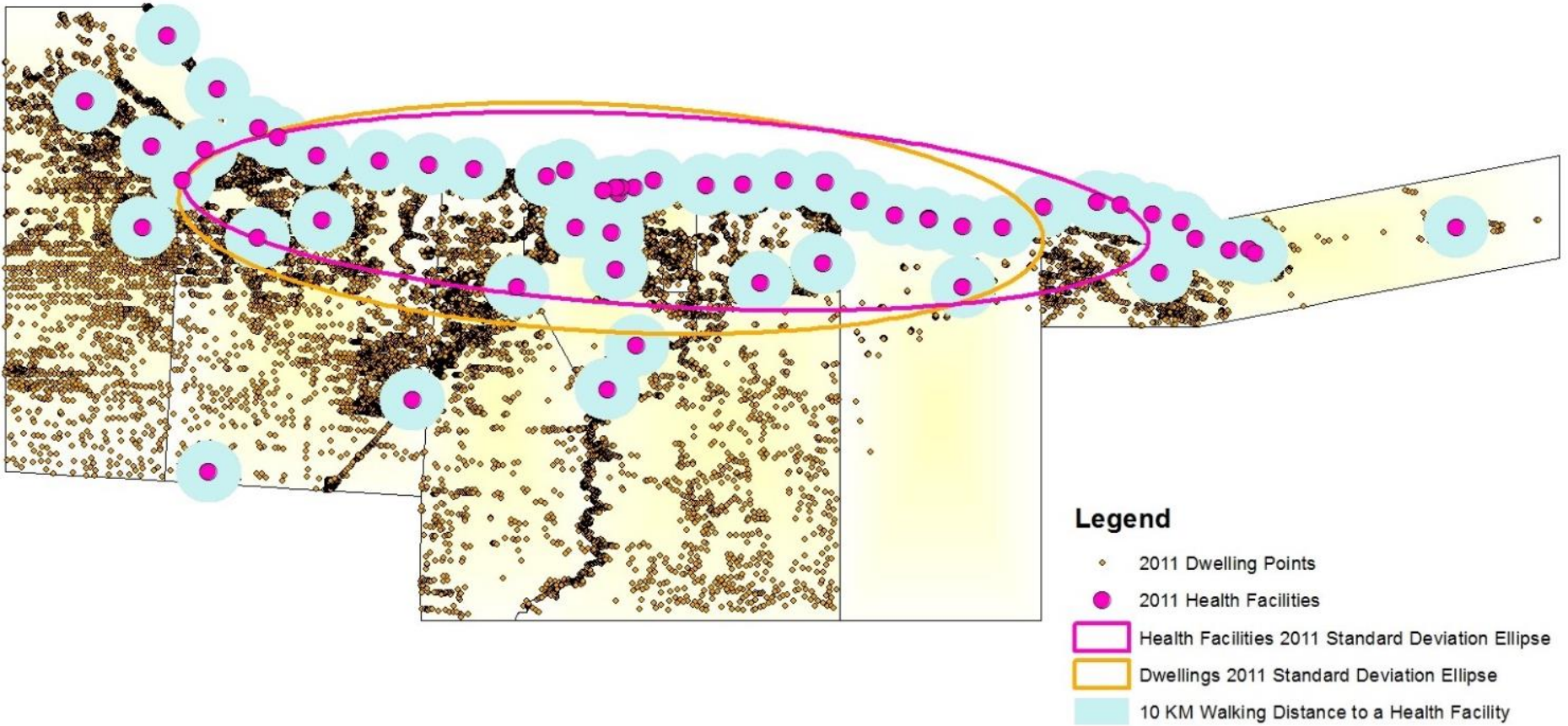
(0 out of 375773 Selected)

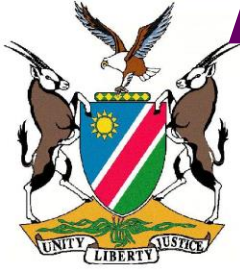
❖ A dot represents a homestead in rural areas and dwelling structure in urban.

WHERE exactly is the
Highest incidence of
Infant/Maternal Mortality?



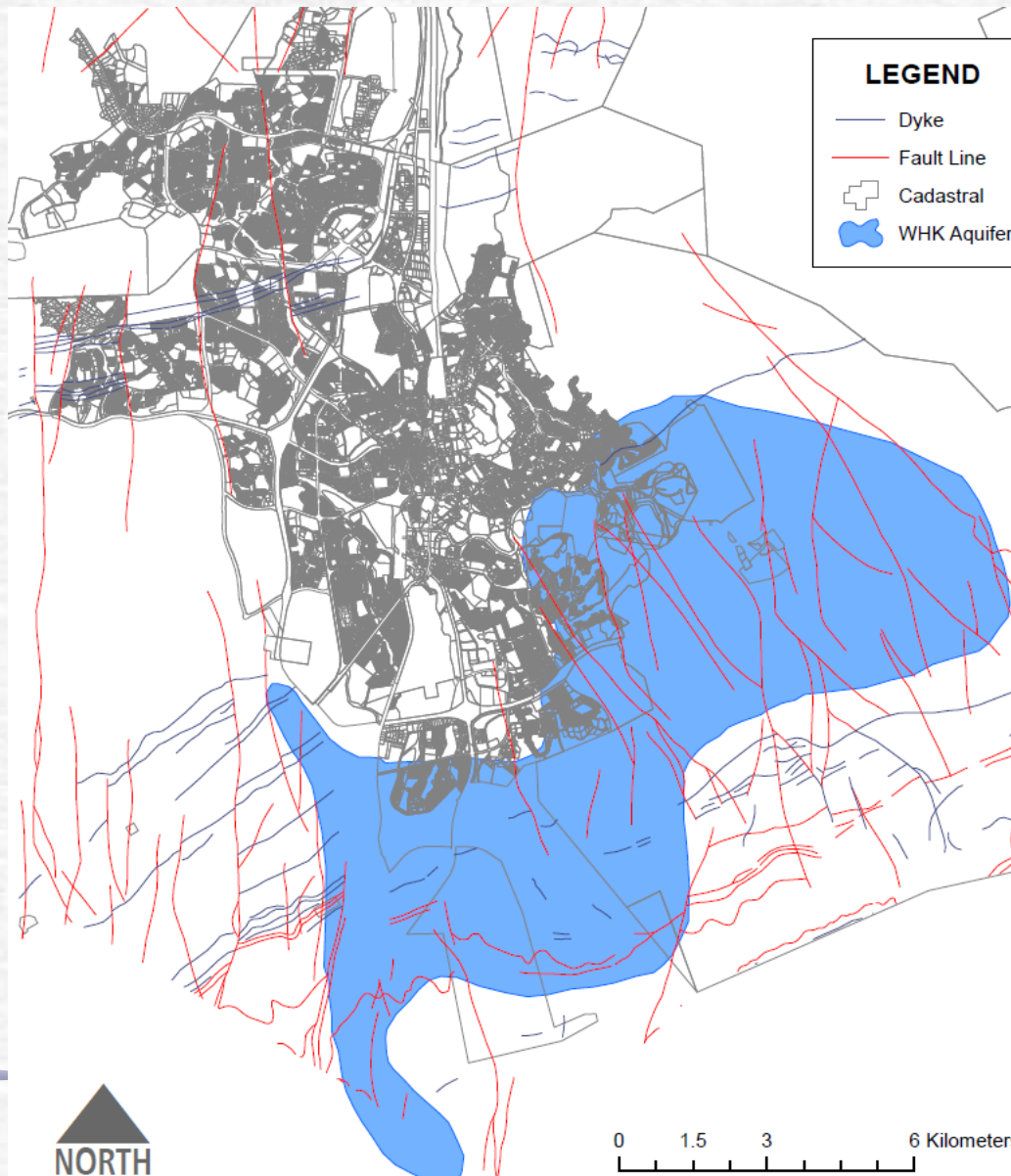
*NAMIBIAN EXAMPLE 2: **WHERE** exactly is the next clinic needed?*



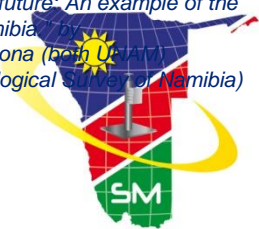


Example 3: THE POWER OF KNOWING THE "WHERE" ...

Case study of Windhoek Aquifer



The position of the aquifer is based on an image from an article titled "Management of City aquifers from anthropogenic activities, soil dynamics and challenges for the future: An example of the Windhoek aquifer, Namibia" by B.S. Mapani, A.F. Kamona (both U.Namibia) and U. Schreiber (Geological Survey of Namibia)

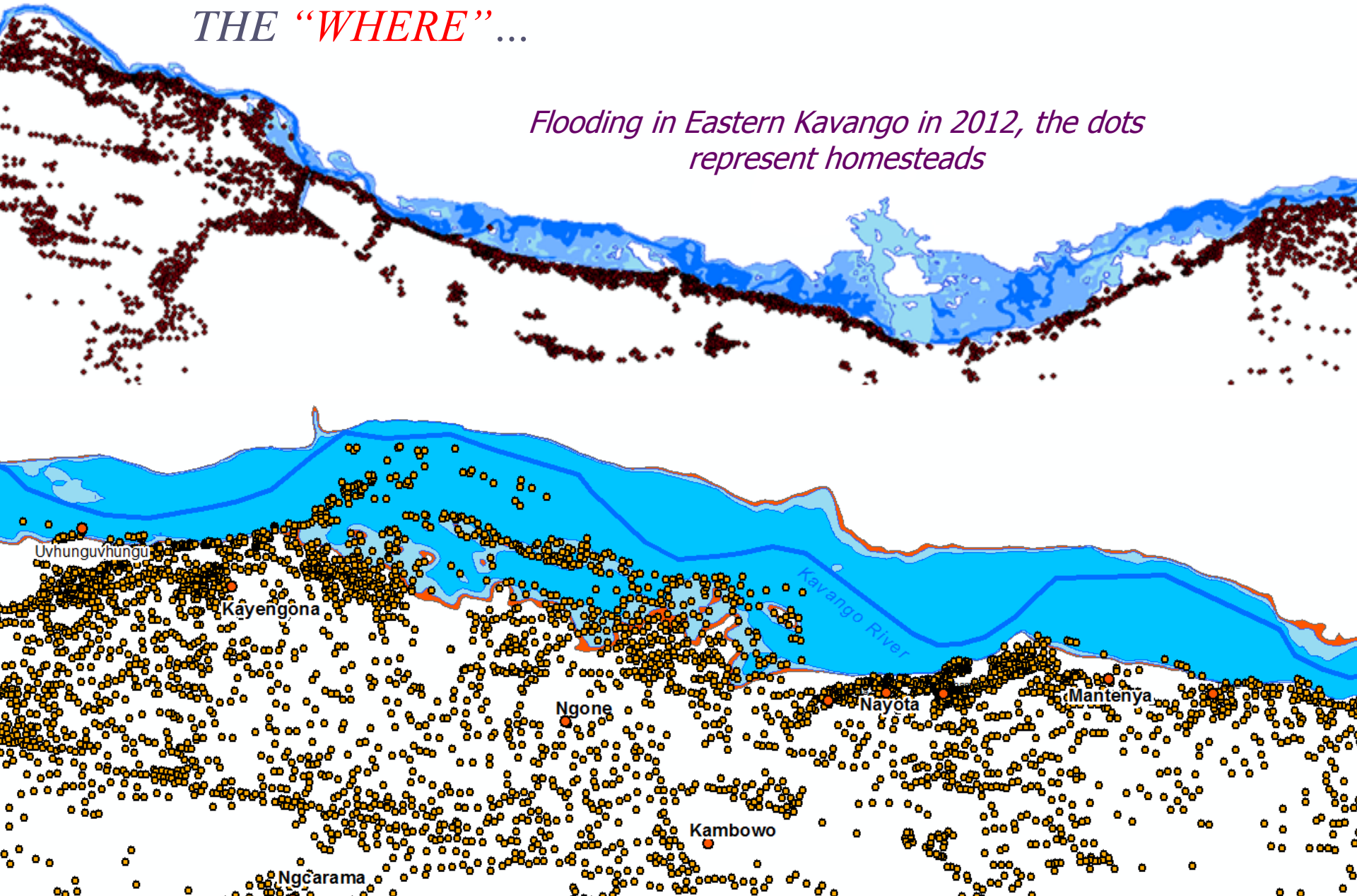




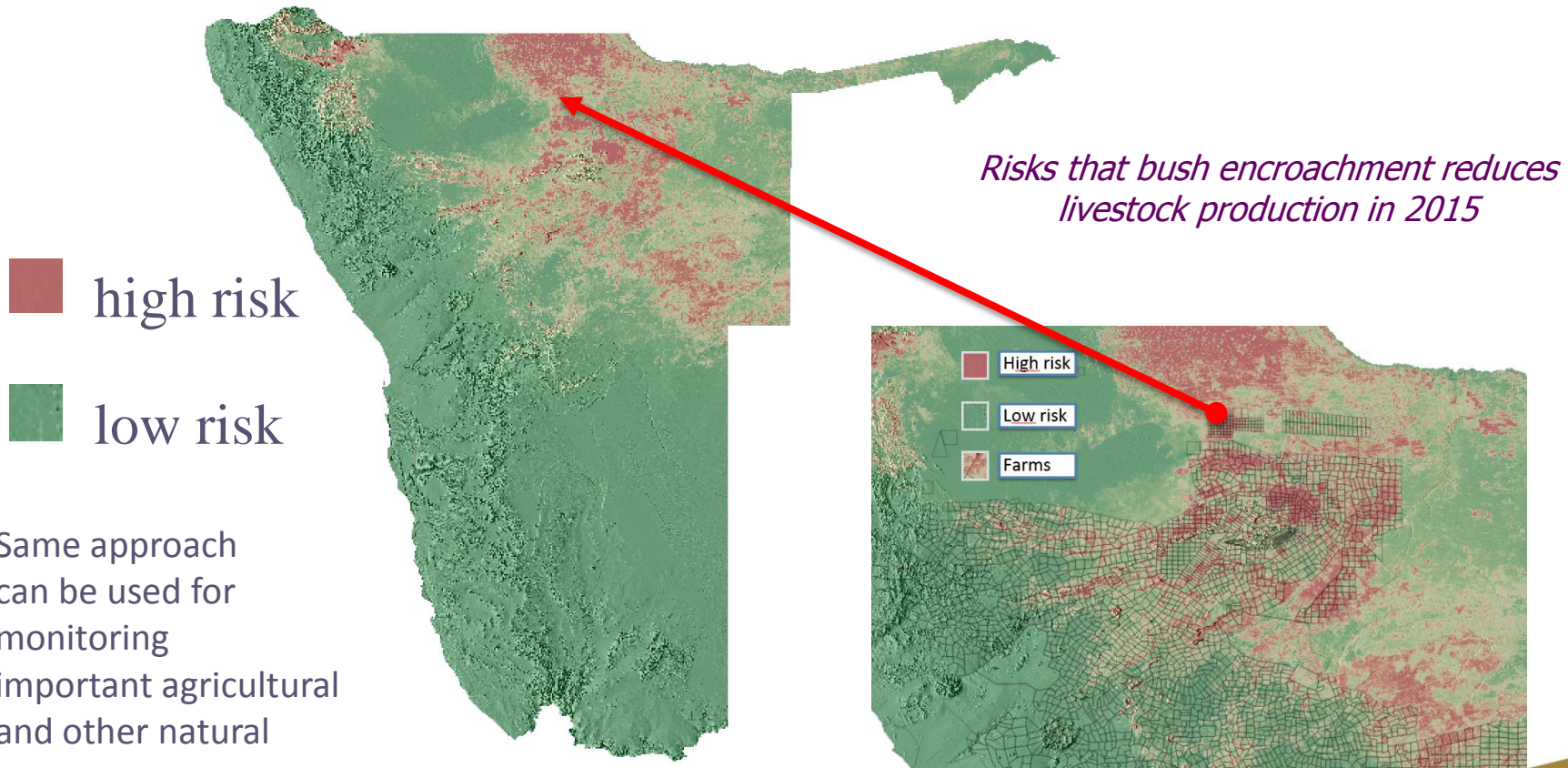
NAMIBIAN EXAMPLE 4: THE POWER OF KNOWING

THE “WHERE” ...

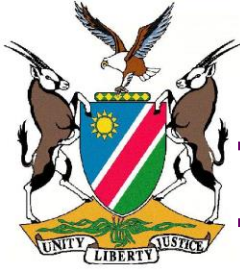
Flooding in Eastern Kavango in 2012, the dots represent homesteads



NAMIBIAN EXAMPLE 5: *WHERE* is Bush Encroachment most severe?



Same approach can be used for monitoring important agricultural and other natural resources



Implementation Challenges-

Digital data

- ☞ Safeguarding, trust and confidence of online transactions
- ☞ confidentiality and security of data
- ☞ Currency of data, frequency of update, online vs batch processing
- ☞ Data maintenance vs public good concept
- ☞ Data integrity – credibility of database, quality, relevance and completeness.
- ☞ Digital data – **no scale**





Conclusion

- “A map in the hands of pilot is a testimony of a man’s faith in other men.....
- A map says to you I am the earth in the palm of your hand. Without me you are alone and lost.” – Beryl Markham





Conclusion...

- Geospatial Information provides intelligence on where we have been, where we are, and where we are likely to be. It is the barometer for measuring Good land governance anchored on sustainable development, **without it we are alone and lost.**

