



# PRESENTATION TIMOR LESTE COUNTRY REPORT

Ministry of Justice  
The Directorate Geral of Land And Property  
National Gespatial Information  
For Second UN-WGIC 10-14 October 2022

# CONTENT

## *1. Country Profile*

- ❖ *Geographiclly*

- ❖ *History*

## *2. GIS Infrastructure*

## *3. Major Activities*

## *4. GIS Issue*

## *5. The Concep of National Gespacial Data Infrastructure (NGDI)*

## *7. Conclusion*



# Geographically

- Timor Leste is an island Country located in Southeast Asia, the north of Australia and the eastern part of the island of Timor
- Mainly mountainous, with small plains
- Tropical monsoon climate
- Economy: Agriculture (Coffee, sandalwood), Offshore oil and gas
- 14 Districts, 68 Sub-districts and 456 Sucos (Villages)

# History

- **1611-1975:** Portuguese colonization
- **1611-1975:** Indonesia Occupation and Administration
- **1999:** Referendum on independence
- **2002:** Independence (20 May)
- **2009:** twenty years from independence
- **Currency :** US Dollar (USD)
- **Population :** 1,293,119 million
- **Official Language :** Portuguese, Tetun
- **Capital city:** Dili
- **Government:** Democracy, Republic, Unitary State, Parliamentary system, Semi-presidential system





# Where is Timor-Leste?



# History

- 1600: Small kingdoms recorded
- 1611-1975: Portuguese colonization
- 1975: Indonesian occupation and administration
- 1999: Referendum on independence
- 2002: Independence (20 May)
- 2009: twenty years from independence



# GIS development Chronology

- 1990s, Second Land Resource Evaluation and Planning Project (LREP-II), ADB funded
- 2000- Various supports from UN, Int'l Organizations and bilateral donors,
  - Transitional period and independence period
  - Support Resolution at 17<sup>th</sup> UNRCC-AP
- 2007-: Resume of GIS development with international supports.
- 2007 -2013, Ita Nia Rai Project
- 2015 – 2020, The National Cadastral Surveying (SNC)



# Legal framework and Policy

## Overview

- Regulation no 10/2019 concerning the ministry of justice
- Regulation No 40/2019, concerning responsible for National Geospatial Information.
- Law no 13/2017 , Land title and register system was stablisht for Timor Leste.
- Decree law no. 65/2022. Cadastral Surveying System
- There no official body such as committee to coordinate development of Geospatial Information at government level.
- No standardization for data production

# DNTPSC, Ministry of Justice

- Cadastral surveys for determination of location and size of parcels for development and use.





# DNTPSC, Ministry of Justice

Maintain framework geographic database



1. Topographic Map scale : 1 : 50.000





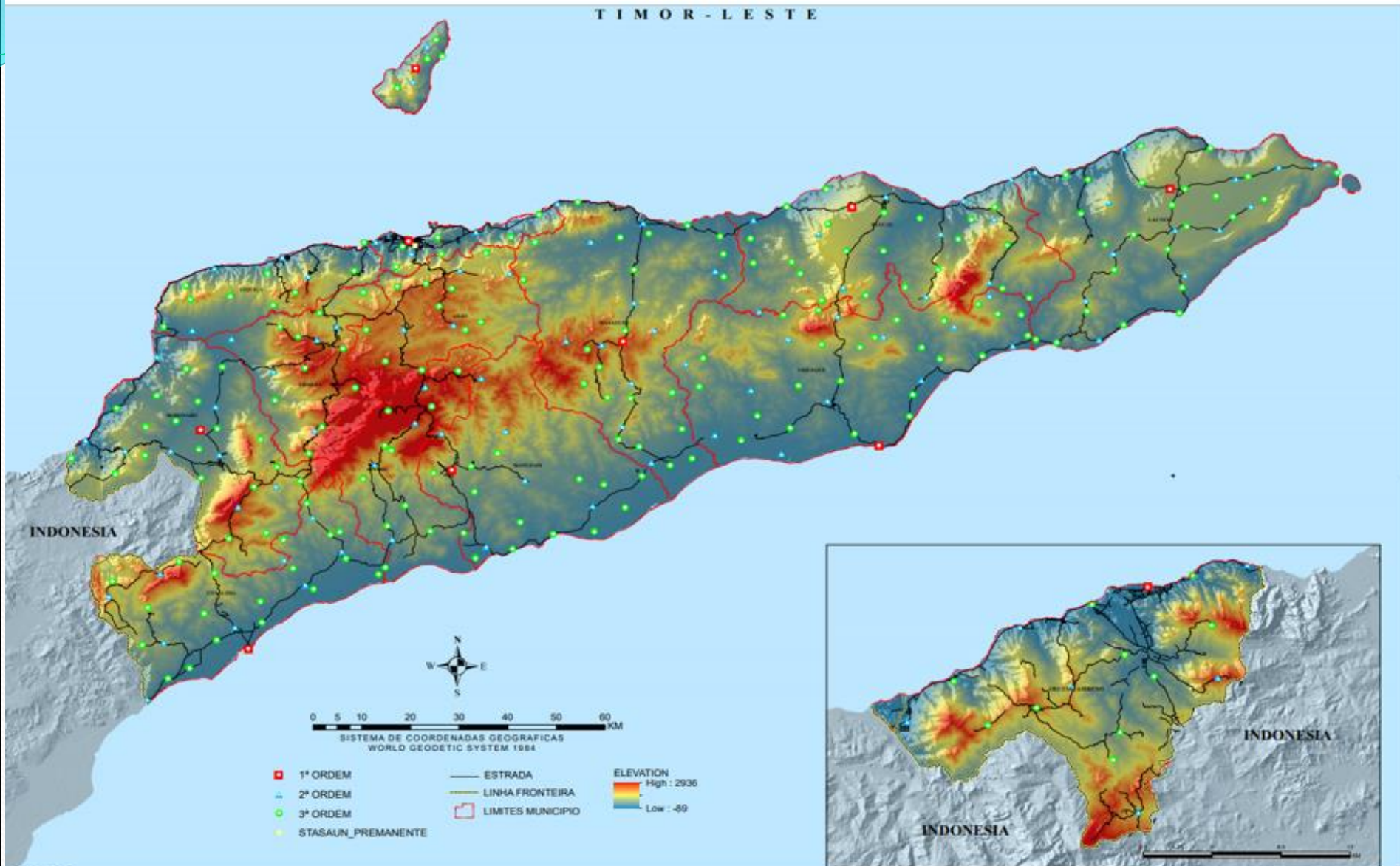
## 2. Aerial Photograph scale 1: 1000



**Cadastral map**



### 3. Geodetic networks





### 3. Geodetic networks





# Ministry of Territorial Planning

3. Major activities

- Establish Eighth Cors Cover Country





# DGTP, Ministry of Justice

## ➤ Contribution to National Development Strategy

- Ministry of State Administration
- Providing thematic maps for Election
- Ministry of Agriculture Conducting surveying for establishment of National park

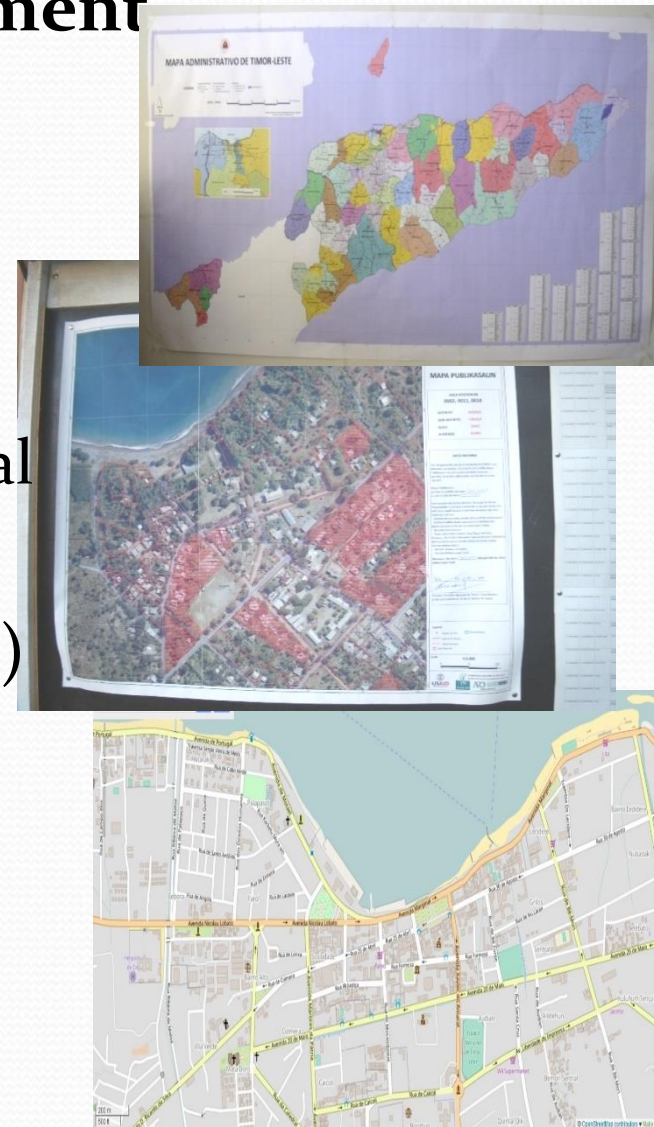
## ➤ The National Cadastral System (SNC)

- Establish land registration system
- Legal and technical (cadastral base map )

## ➤ Boundary Demarcation survey

- Joint survey with Indonesian side

## ➤ Toponymy surveying :





# DGTP, Ministry of Justice

- External support made so far
  - Australia: Air photograph, 1:50,000 topographic map
  - Japan: 1:2,000 topographic map for Dili City and provide training, program and equipment
  - USAID Project: *Strengthening Property Rights in Timor-Leste* (SPRTL) managed by the company Tetra Tech ARD (ITA NIA RAI )
  - Portugal (GMN- ARM APPRIZE) : National Geodetic framework, Survey to Stablish National Cadastral System

# Other institutions

## 1. Ministry of Agriculture

- ALGIS: Agricultural and Land Use GIS

## 2. Ministry of Finance :

- Census Map
- Survey to stablist 2000 housing for affected people

## 3. Infrastructure: Road database

## 4. Ministry of Transport and telecommunication

- Survey to establish National Port on Tibar Village
- Survey to establish National height way



# NEW TIMOR PORT

3. Major activities



**YOUR FULLY  
INTEGRATED  
MARITIME  
PARTNER**





# NATIONAL HIGHWAY RING ROAD

Suai Highway Phase I, East Timor  
Total length: 30.355 kilometers

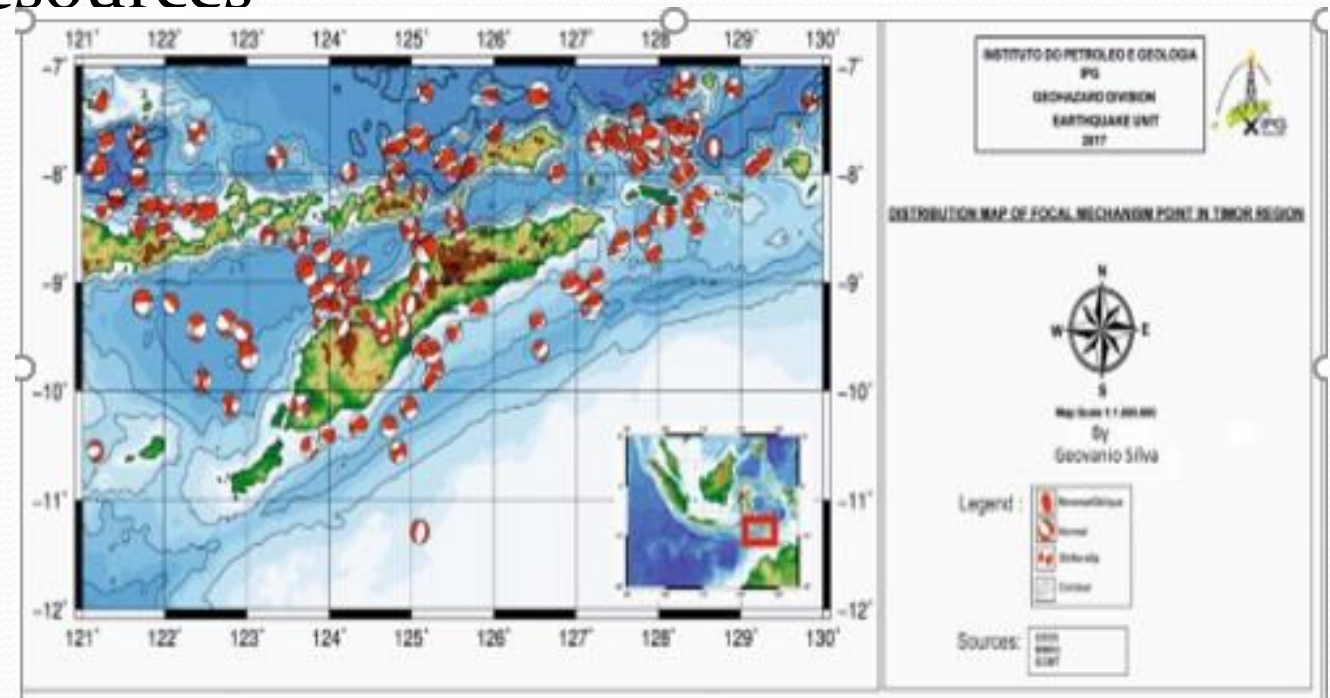
This two-way four-lane highway is located on the south coast of Timor-Leste. The highway is projected for speeds up to 100 km/h in flat areas and 60 km/h in mountain areas. Commenced in Jan. 2016, this 30.355-kilometer-long highway has been completed in Nov, 2018





# Other institutions

- Institute of Petrology and Geology , Mapping for National Resources



- Timor Gap , Mapping on “Timor Supaly base Project
- Ministry of Natural Resources , Conducting Mapping and Survey for LNG project at Beasu Area

### 3. Major activities





# *CAPACITY BUILDING*

- Generous supports from donors and international community
  - Development of land registration Regulation
- Lack of human resource and institutional capacity
  - develop, store, revise, distribute GIS data.
- Training (External and internal) still required
  - Possibility of using existing resources

# *TOWARDS A NSDI*

- Achievements so far
  - UTM 51 S, WGS84, GI portal
- Still required for effective and efficient GIS infrastructure
  - Standardization
  - Centralizing metadata and feature catalogues
  - Facilitate data exchange and dissemination, revision of GIS portal
  - Formalized national coordination body



# GEOSPACIAL INFRASTRUTURE DATASET :

- Centralizing metadata and feature catalogues such as ;
  - Raster Data
  - Vector Data
  - Numeric Data
- Facilitate data exchange and dissemination, revision of GIS portal
  - Standardization
  - Formalized national coordination body with establishment of National Committee on Geospatial Information (NCGI)



## *HYDROLOGY DATA MODEL*

- Streams
- Hydrology Point
- Drainage Area
- Hydrography
- Surface Terrain
- Rainfall response
- Digital Ortho photography
- Satellite Image

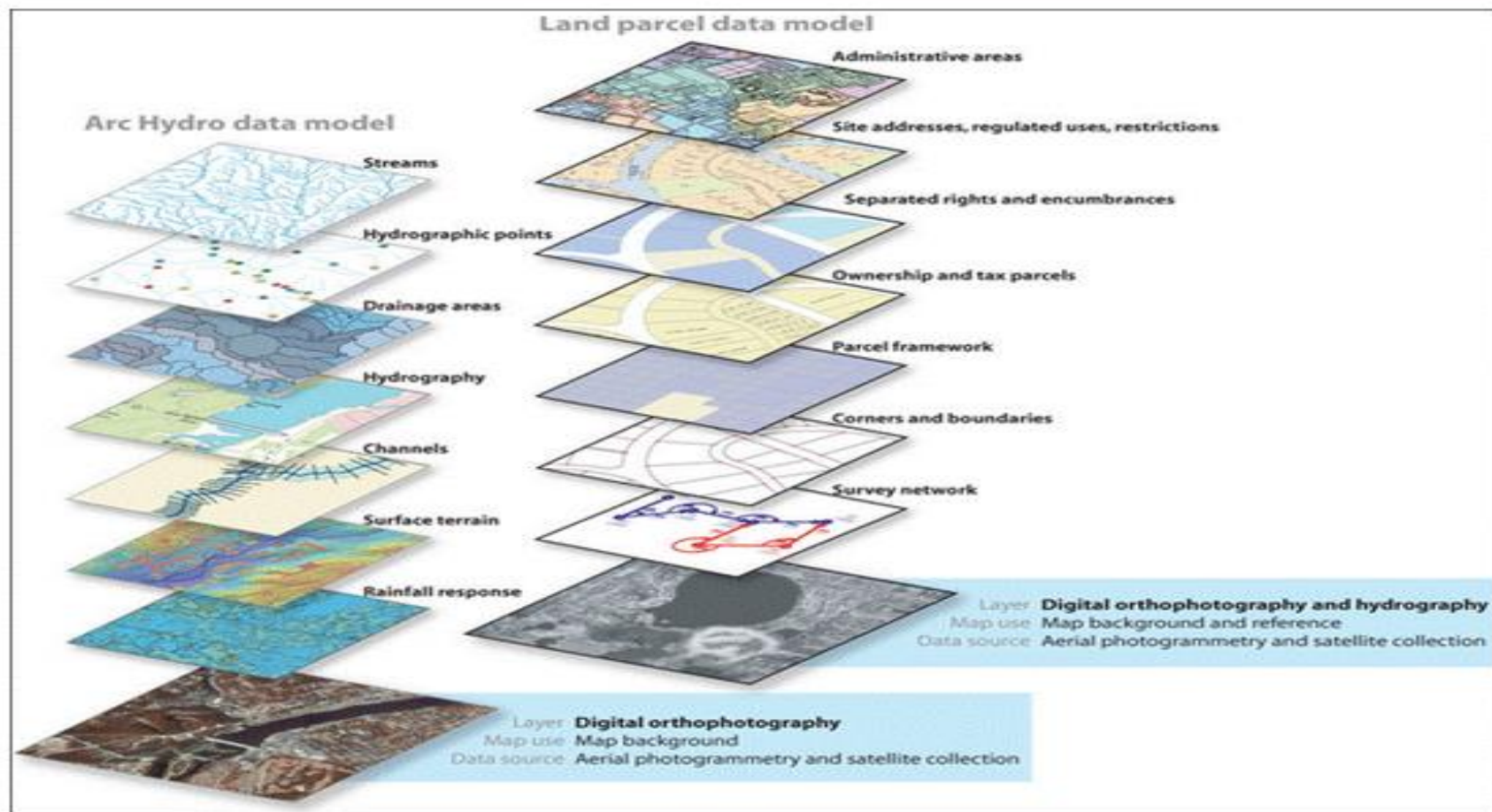


# *LAND PARCEL DATA MODEL*

- Administration boundary
- Sistema de Rodaviariu
- Parkin area
- Private land parcelas
- Private Abandoned land
- Government land
- Area for Investment
- Protection area
- Public land
- National Park

# *GIS DATA MODEL (LAYER GIS)*

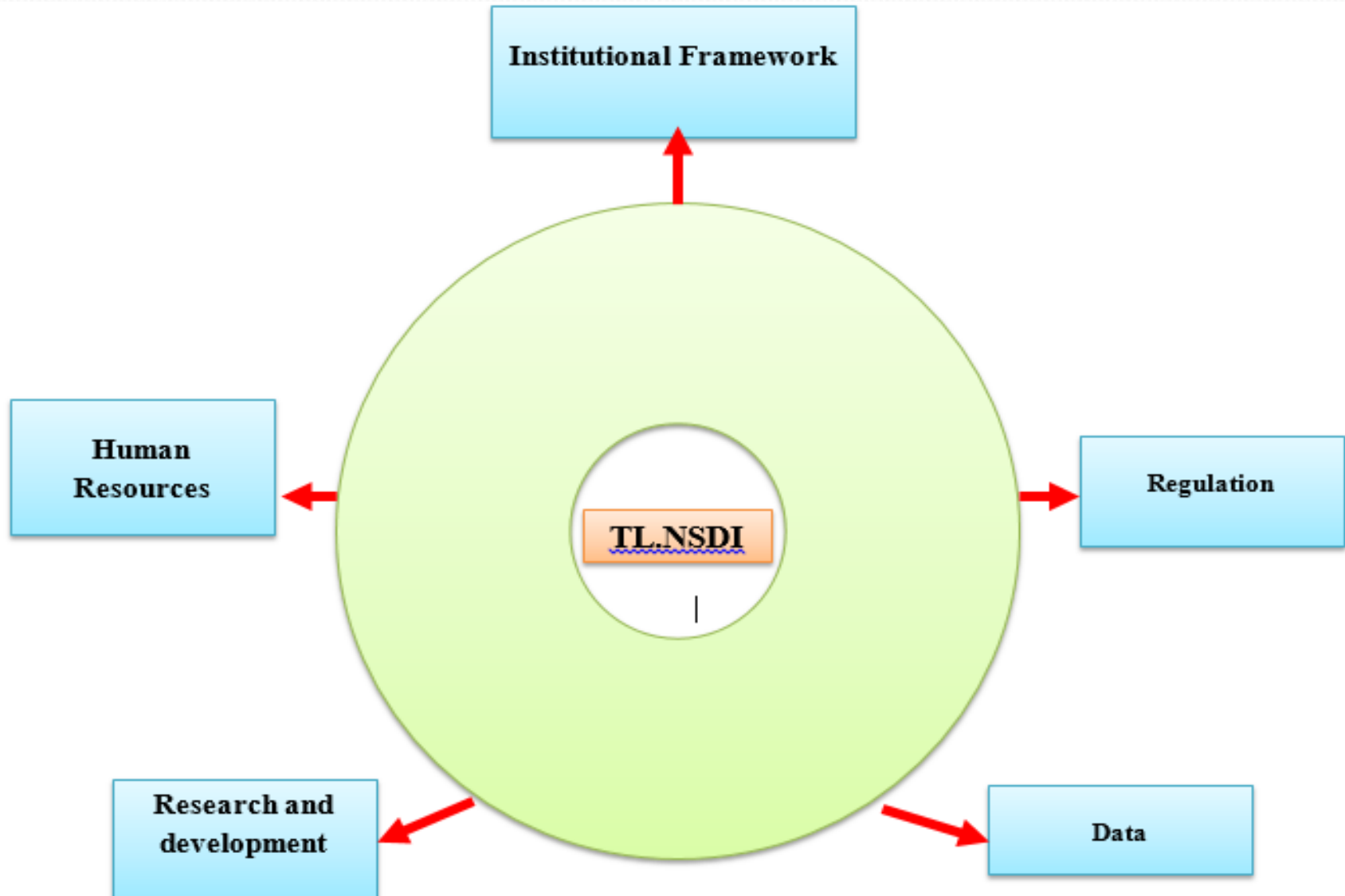
## Layers in a GIS



This is a schematic of the various types of layers that can be used in a GIS.



# 5 COMPONENT OF TIMOR LESTE NATIONAL DATA INFRASTRUCTURE

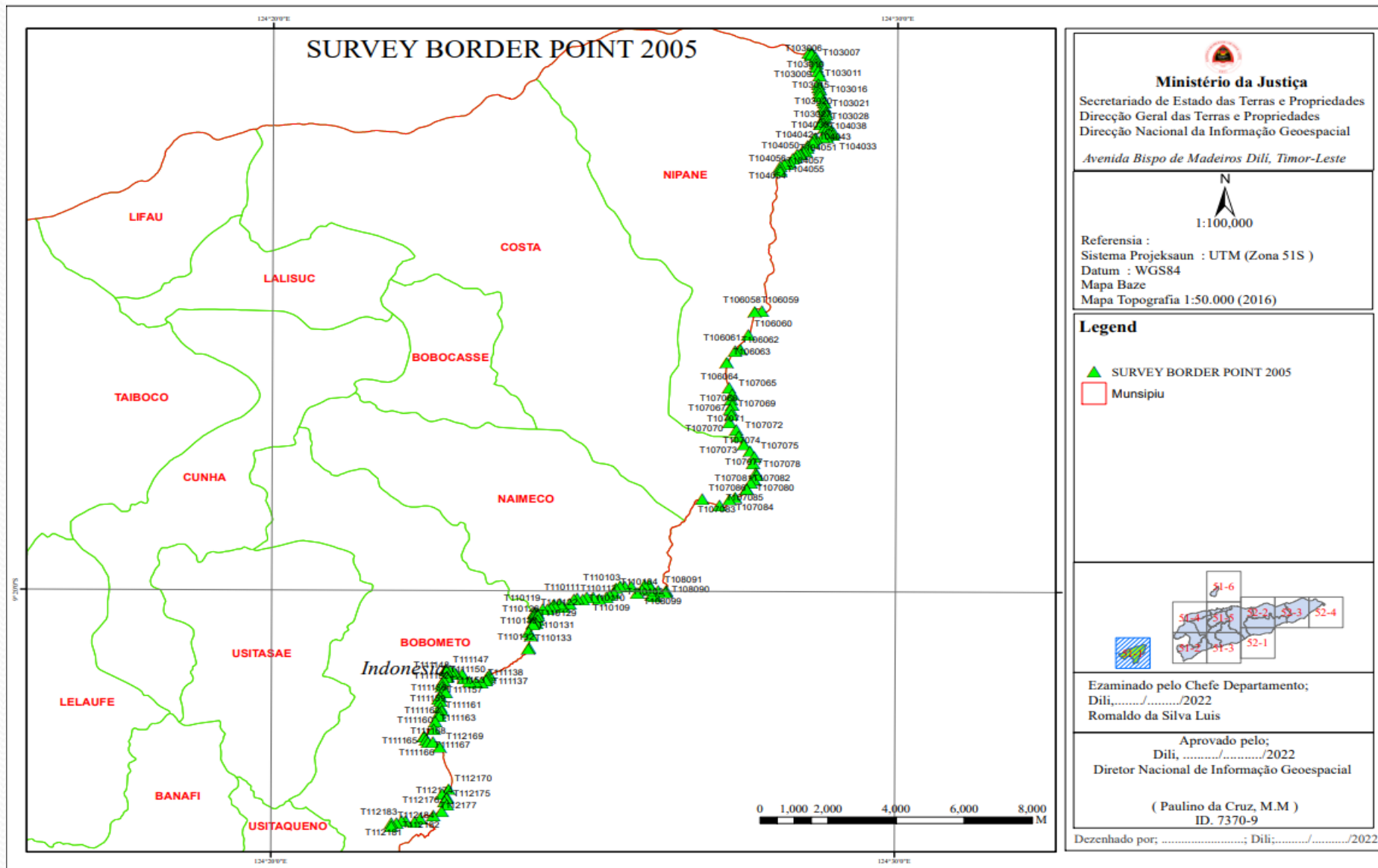


# Administrative boundary

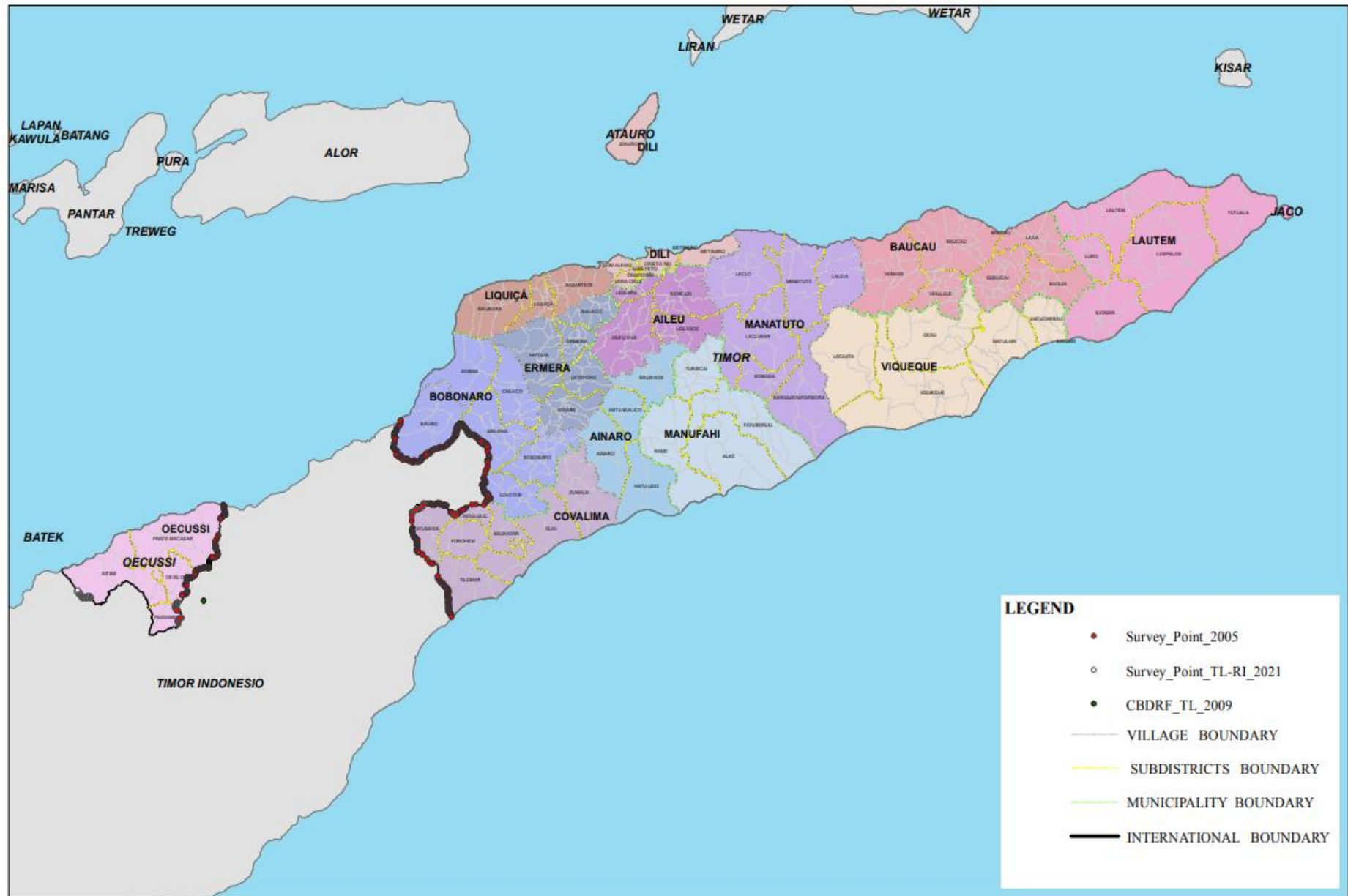
- **No legitimated administrative boundary data**
  - Various versions lead confusion
  - Potential cause of land disputes
  - Misconduct of administration works (census, election)
- **Approaches for solving the problems**
  - Lobbying, information sharing
  - Cooperation with Ministry of State Administration
  - Project configuration, seeking funds



# BORDER DEMARCATATION



# MAP JOIN SURVEY BOUDARY TL- RI





# ***BORDER DEMARCATION***

- Clear national border demarcation between Timor-Leste and Indonesia for
  - Maintaining security
  - Facilitate the movement of people and goods
  - Effective natural resources management
- Continuing joint efforts are
  - Resolve contested sections
  - Border marker installation, survey and maintainance
  - 1:25,000 mapping in the border area
  - Establishment of gazetteers

# Conclusions

- Efforts have been made, but national capacity is still low.
- Priorities are
  - Sufficient technical capacity development
  - Overall coordination of GIS infrastructures
- Timor-Leste thanks to all the members UN-GGIM AP and International communities
- Expect the better future than today





# Acknowledgements

On behalf of the Government of Timor-Leste, I would like to express my gratitude for this kind cooperation and support from UN-WGIC, UN-GGIM, UNRCC\_AP, ISCGM, PCGIAP and all the members. In regards to that, I wish this good cooperation could be well maintained in the future.



THANK YOU